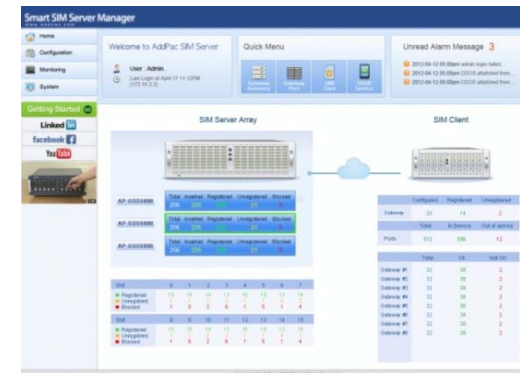


# GSM SIM Server Interworking with 4,8 Port SOHO GSM Gateways



**AddPac**

**AddPac Technology**

2013, Sales and Marketing

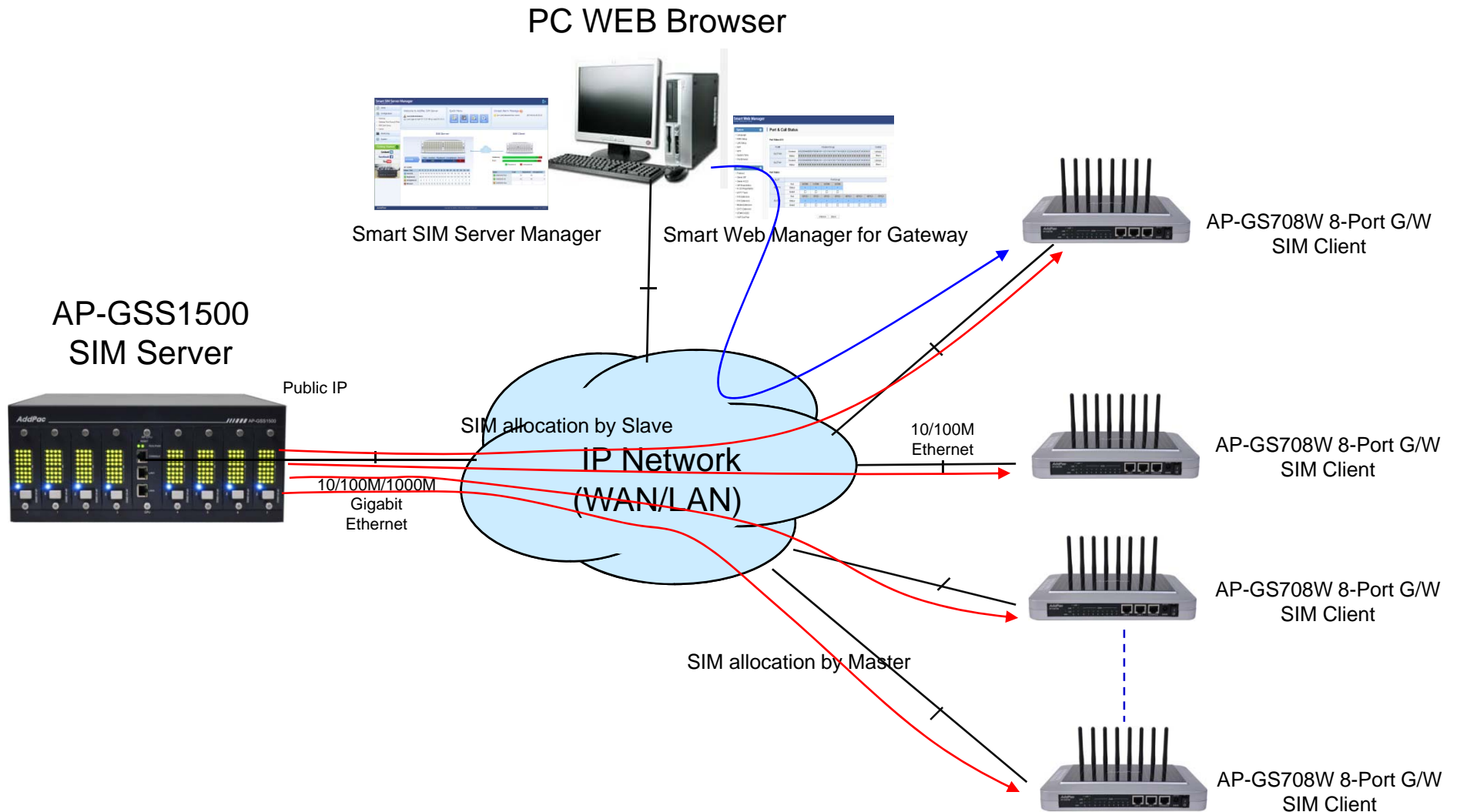
# Contents

- AP-GSS1500 Interworking Service Diagram (example)
  - Phase 1 : 8-Port GSM Gateway 8 EA + 256SIM SIM Server 1EA
  - Phase 2 : 8-Port GSM Gateway 8 EA + 256SIM SIM Server 2EA
- GSM SIM Server Comparison Table
- AddPac 8-Port GSM Gateway for SIM Client
- AddPac 4-Port GSM Gateway for SIM Client



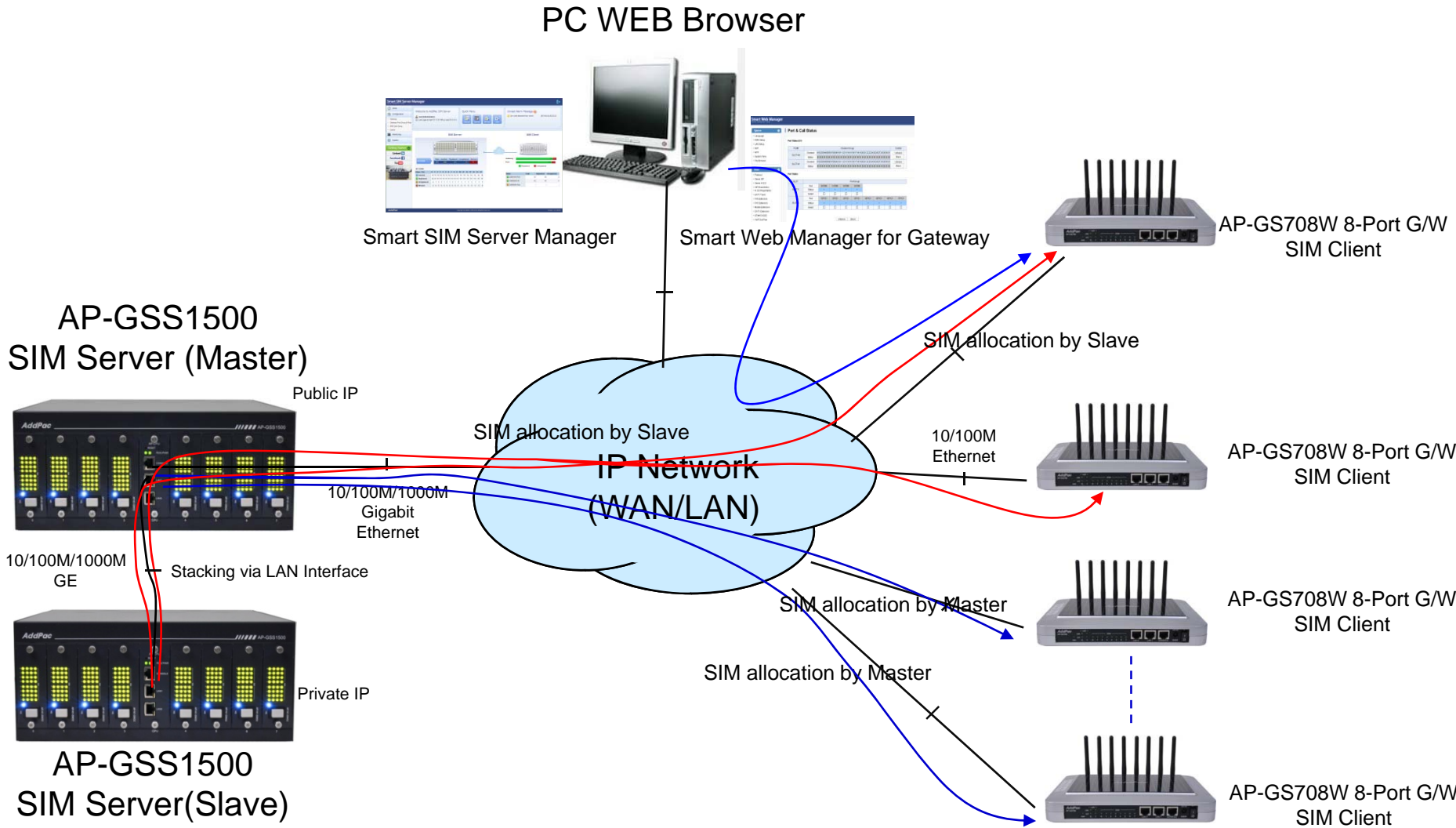
# AP-GSS1500 Interworking Service Diagram

Phase 1 : 256 SIM + 64Port GSM : Quad(4) SIM / a GSM Port



# AP-GSS1500 Interworking Service Diagram

Phase 2 : 512SIM + 64Port GSM : Octal(8) SIM / a GSM Port







**AddPac**

[www.addpac.com](http://www.addpac.com)



# GSM SIM Server Series

# GSM SIM Server Comparison Table

Model	AP-GSS5000	AP-GSS3000	AP-GSS2000	AP-GSS1500
				
Available Modules	AP-GSC32F AP-CPU AP-POWER	AP-GSC32 AP-CPU AP-POWER	AP-GSC32 AP-CPU	AP-N1-SIM32 AP-CPU
SIM Bank Module	AP-GSC32F : 32 SIM, Front Insertion Type, Single SIM base exchange, Hot-Swap	AP-GSC32 : 32 SIM, Hot-Swap AP-GSC64 : 64 SIM, Hot-Swap	AP-GSC32 : 32 SIM, Hot-Swap	AP-N1-SIM32: 32 SIM, Hot-Swap
Total SIM Cards	Up to 512 SIM	Up to 1024SIM	Up to 256 SIM	Up to 256 SIM
SIM Bank Module Slot	Sixteen(16) Module Slots for AP-GSC32F	Sixteen(16) Module Slots for AP-GSC32, AP- GSC64	Octal(8) Module Slots for AP-GSC32	Octal(8) Module Slots for AP-N1-SIM32
LAN Port	2	2	2	2
Console	1	1	1	1
Power	Module Type Single PSU	Module Type Dual PSU	Single PSU	Single PSU



# AP-GS708W 8-Port GSM Gateway for SIM Client

# Product Overview

## AP-GS708W 8-Port GSM VoIP Gateway

- 8-Port GSM VoIP Gateway Solution
- 8-Port GSM SIM Slot, 8-Port Antenna Interface
- GSM VoIP Interface(LAN) Support
- H.323/SIP Dual Concurrent Stack Embedded
- SIM Client Service for Remote SIM Application
- Auto IMEI change / Auto BTS Change
- High Performance RISC & Programmable DSP Architecture
- Voice Codec G.711/G.726/G.723/G.729, T.38 Fax , VAD, etc
- Powerful Network Protocols (PPPoE, DHCP, Static Routing, etc)
- Two(2) 10/100Mbps Fast Ethernet (IP Share ,etc)
- One(1) RS-232C Port for Command Line Interface
- Firmware Upgradeable Architecture
- Smart NMS for Large Scale Deployment
- Advanced Voice QoS Mechanism
- Light and Compact Design with External Power Supply



# Hardware Specification

AP-GS708W 8-Port GSM VoIP Gateway

RISC  
CPU

High-end  
DSP

- RISC Microprocessor Computing Power
- Powerful High-End DSP for VoIP Interface
- 8-Port GSM VoIP Gateway
- 8-Port SIM Card Slots
- 8-Port GSM Antenna Interface
- Network Interface for VoIP Direct Interface
  - Two(2) 10/100Mbps Fast Ethernet (RJ45)
- RS232C Console Interface for CLI
- Run LED, LAN LED, Port LEDs at Front Side
- Compact and Light Design with External Power Supply

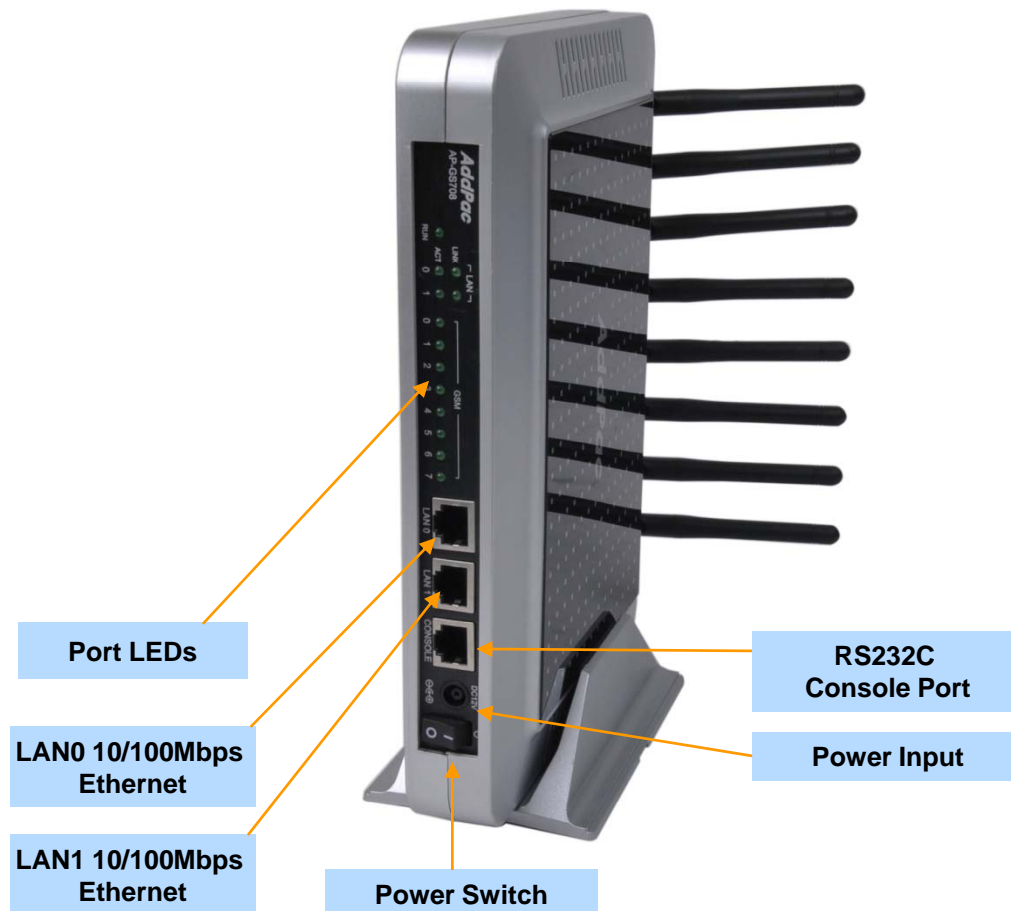
# Hardware Specification

AP-GS708W 8-Port GSM VoIP Gateway

RISC  
CPU

High-end  
DSP

## Front Side View



**AddPac**

[www.addpac.com](http://www.addpac.com)

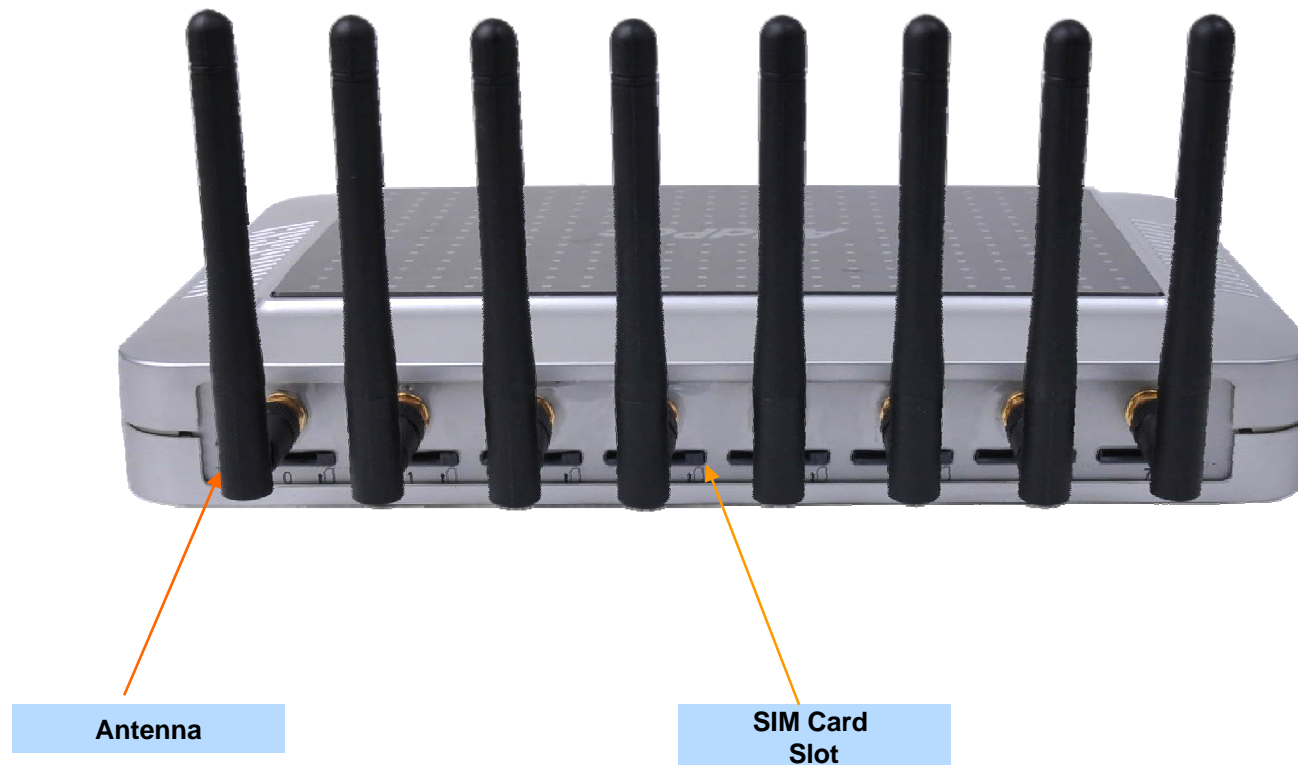
# Hardware Specification

AP-GS708W 8-Port GSM VoIP Gateway

RISC  
CPU

High-end  
DSP

## Back Side View





# AP-GS1004I 4-Port GSM Gateway for SIM Client

# Product Overview

## AP-GS1004I 4-Port GSM Gateway

- Analog Interface (FXS)/VoIP Interface(LAN) Both Support
- 4-Port GSM VoIP Interface (Model A)
- 4-Port GSM VoIP + 4-Port FXS Interface (Model B)
- 4-Port GSM VoIP + 4-Port FXO Interface (Model C)
- H.323/SIP Dual Concurrent Stack Embedded
- SIM Client Service for Remote SIM Application
- Auto IMEI change / Auto BTS Change
- Voice Codec G.711/G.726/G.723/G.729, T.38 Fax , VAD, etc
- Powerful Network Protocols (PPPoE, DHCP, Static Routing, etc)
- One(1) 10/100Mbps Fast Ethernet (IP Share ,etc)
- One(1) RS-232C Port for Command Line Interface
- Firmware Upgradeable Architecture
- Web based Smart Manager
- Advanced Voice QoS Mechanism
- Light and Compact Design with External Power Supply

# Hardware Specification

AP-GS1004I 4-Port GSM Gateway

RISC  
CPU

High-end  
DSP

- RISC Microprocessor Computing Power
- 4-Port GSM VoIP Gateway
- 4-Port SIM Card Slot
- Four(4) GSM Antenna Interface
- Analog Interface
  - 4-Port GSM VoIP : Model A
  - 4-Port GSM VoIP + 4-Port FXS Interface : Model B
  - 4-Port GSM VoIP + 4-Port FXO Interface : Model C
- Network Interface for VoIP Direct Interface
  - One(1) 10/100Mbps Fast Ethernet (RJ45)
- RS232C Console Interface for CLI
- Run LED, LAN LED, Port LEDs
- External Power Supply

# Hardware Specification

AP-GS1004I 4-Port GSM Gateway

RISC  
CPU

High-end  
DSP



**AddPac**

[www.addpac.com](http://www.addpac.com)

15

# Hardware Specification

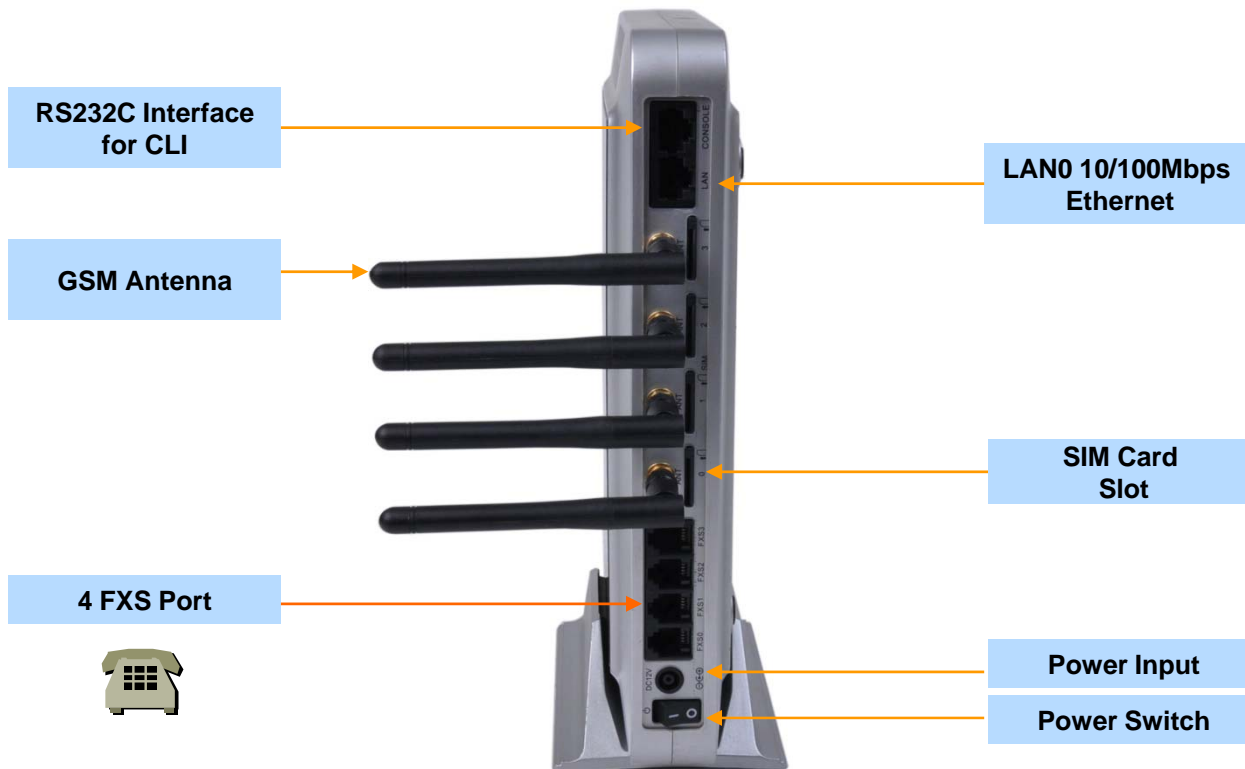
AP-GS1004I 4-Port GSM Gateway

RISC  
CPU

High-end  
DSP

Back Side View

AP-GS1004I Model B







# Thank you!

**AddPac Technology Co., Ltd.**  
Sales and Marketing

Phone +82.2.568.3848 (KOREA)

FAX +82.2.568.3847 (KOREA)

E-mail [sales@addpac.com](mailto:sales@addpac.com)