

AP-RAC1000

Remote Access Controller

Next Generation Remote Access Controller for GSM Gateways

Preliminary Product Overview



AddPac

AddPac Technology

2013, Sales and Marketing

www.addpac.com

Contents

- Product Overview
- Hardware Specification
- Software Service
- Network Diagram
- Network Service and Features
- Ordering Information



Product Overview

AP-RAC1000 Remote Access Controller

- Remote Access Controller for Multiple GSM Gateways
- Embedded H/W Platform with Dual CPU Module Slots
- Fault Tolerant and Reliability Service
- Up to 256 GSM Gateway Support
- Telnet Server, FTP Server, SNMP Agent
- AddPac Specific Remote Access Control Functions
 - Automatic Gateway Registration
 - Remote monitoring via HTTP interface

Hardware Specification

AP-RAC1000 Remote Access Controller

High-end
RISC

- High-end Programmable RISC Hardware Architecture
- Two(2) Module Slots for Remote Access Control Service
- Smart Remote Access Control System Board
 - Network Interface
 - Two(2) 10/100/1000Mbps Gigabit Ethernet
 - One(1) Console Port



Hardware Specification

AP-RAC1000 Remote Access Controller

High-end
RISC

AP-RAC1000 Front View



RAC System Board



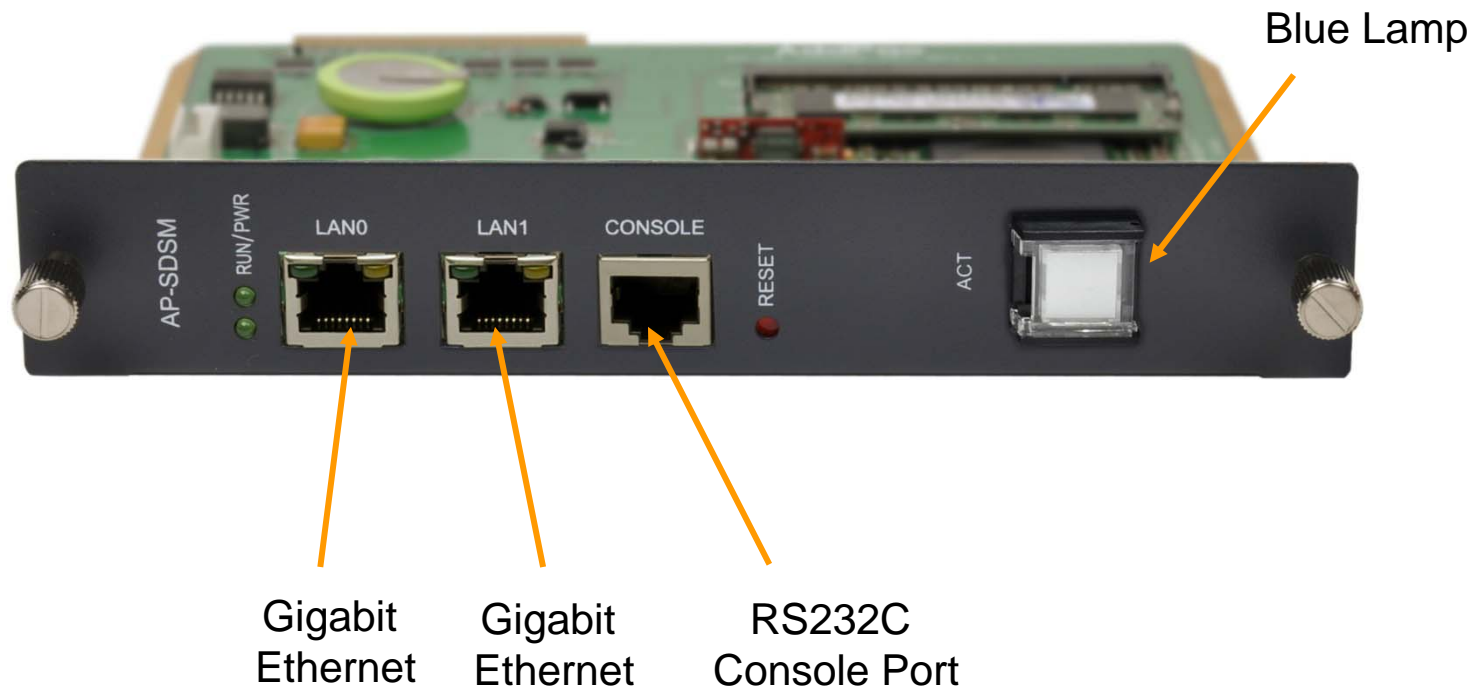
Hardware Specification

AP-RAC1000 Remote Access Controller

64bit
CPU

DSP

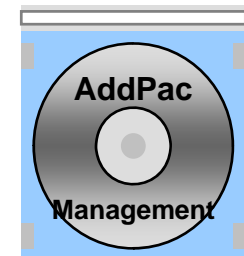
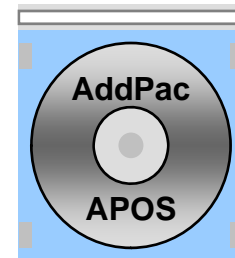
RAC System Board



Software Service

AP-RAC1000 Remote Access Controller

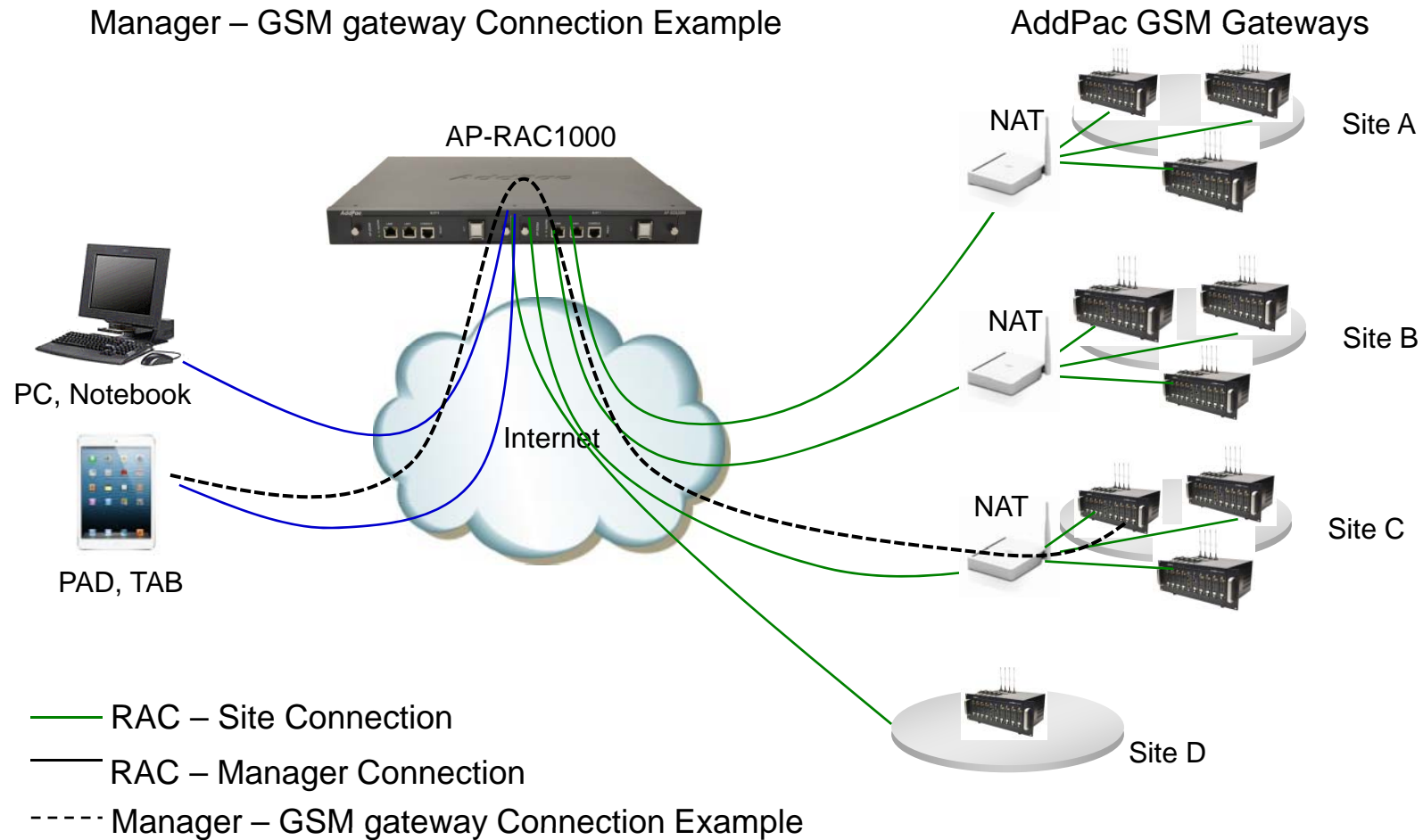
- GSM gateway Status Monitoring
 - Display summary Information
 - Display basic gateway status
- GSM gateway HTTP Access
 - Direct Access the gateway via RAC
- GSM gateway Telnet Access via RAC
 - Direct Access the gateway via RAC
- Support Dynamic Address
 - Static/DHCP/PPP Environment
- Support NAT/PAT Environment
 - Support Private IP address behind of NAT router



Remote Access Control Network Diagram

AP-RAC1000 Remote Access Controller

Manager – GSM gateway Connection Example



Network Service and Features

AP-RAC1000 Remote Access Controller

- Network Managements
 - Standard SNMP Agent (MIB v2) Support
 - Remote Management using Console, Telnet
 - Web based Management using HTTP Server Interface
- Security Functions
 - Standard & Extended IP Access List
 - Enable/Disable for Specific Network Protocols
 - Multi-level User Account Management
 - Auto-disconnect for Telnet/Console Sessions
 - PPP User Authentication Supports (PAP & CHAP)
- Operation & Managements
 - System Performance Analysis for Process, CPU, Connection Interface
 - Debugging, System Auditing, and Diagnostics Support
 - System Booting and Auto-rebooting with Watchdog Feature
 - System Managements with Data Logging
 - IP Traffic Statistics with Accounting

Network Service and Features

AP-RAC1000 Remote Access Controller

- Other Scalability Features
 - DHCP Server & Relay Functions
 - Network Address Translation (NAT) Function
 - Port Address Translation (PAT) Function
 - Transparent Bridging (IEEE Standard) Function
 - Spanning Tree Bridging Protocol Support
 - Remote Bridging Support
 - Concurrent Routing and Bridging Support
 - Cisco Style Command Line Interface (CLI)
 - Network time Protocol (NTP) Support

Ordering Information

AP-RAC1000 Remote Access Controller

- **AP-RAC1000 Hardware Platform**
 - Embedded H/W Platform
 - Programmable RISC Architecture
 - Two(2) RAC System Board Module Slots
- **Built-in APOS Internetworking Software for AP-RAC1000**
- **Including 1 Year Hardware Warranty**
- **Product Documents**
 - Install and Operation Guide (PDF)
- **Pricing**
 - AddPac Technology Regional Sales Manager
 - Authorized Sales and Marketing Representatives
 - Please Contact www.addpac.com



Thank you!

AddPac Technology Co., Ltd.
Sales and Marketing

Phone +82.2.568.3848 (KOREA)

FAX +82.2.568.3847 (KOREA)

E-mail sales@addpac.com