



Asterisk Free-PBX

AP-GS1002™

2-Port FXS GSM Gateway

High Performance GSM Gateway Solution

Asterisk Free-PBX interworking GSM Gateway



AddPac

AddPac Technology

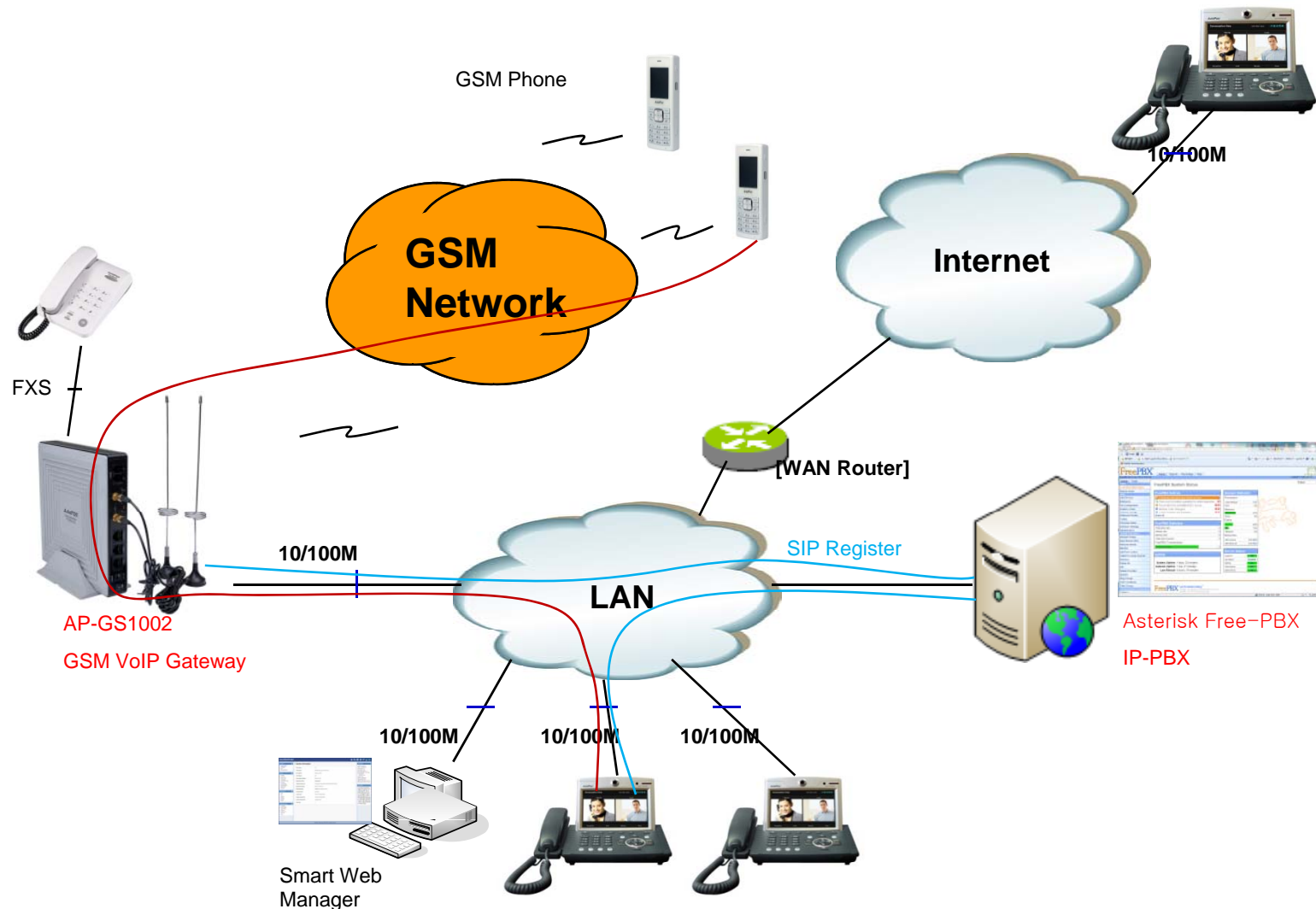
2012, Sales and Marketing

www.addpac.com

Contents

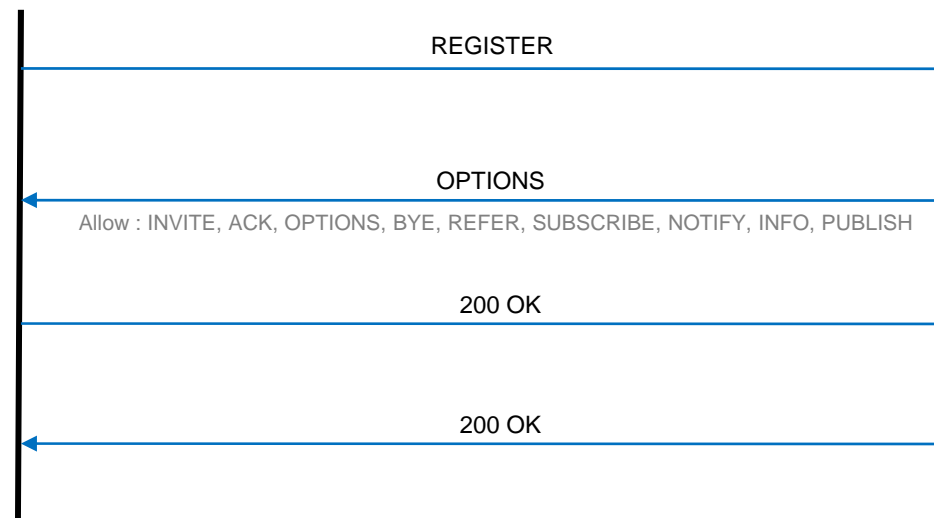
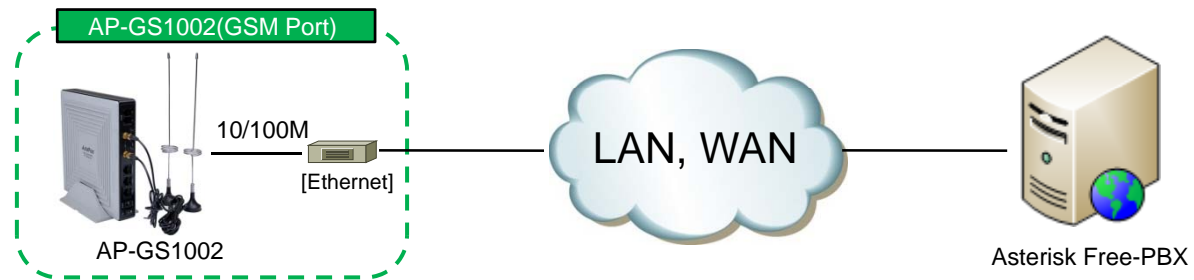
- Asterisk Free-PBX Interworking Network Diagram
- Register to Asterisk Free-PBX
 - SIP Message Flow
 - Asterisk Free-PBX Add Extension
 - GSM Port Register
- Call Flow

Network Diagram



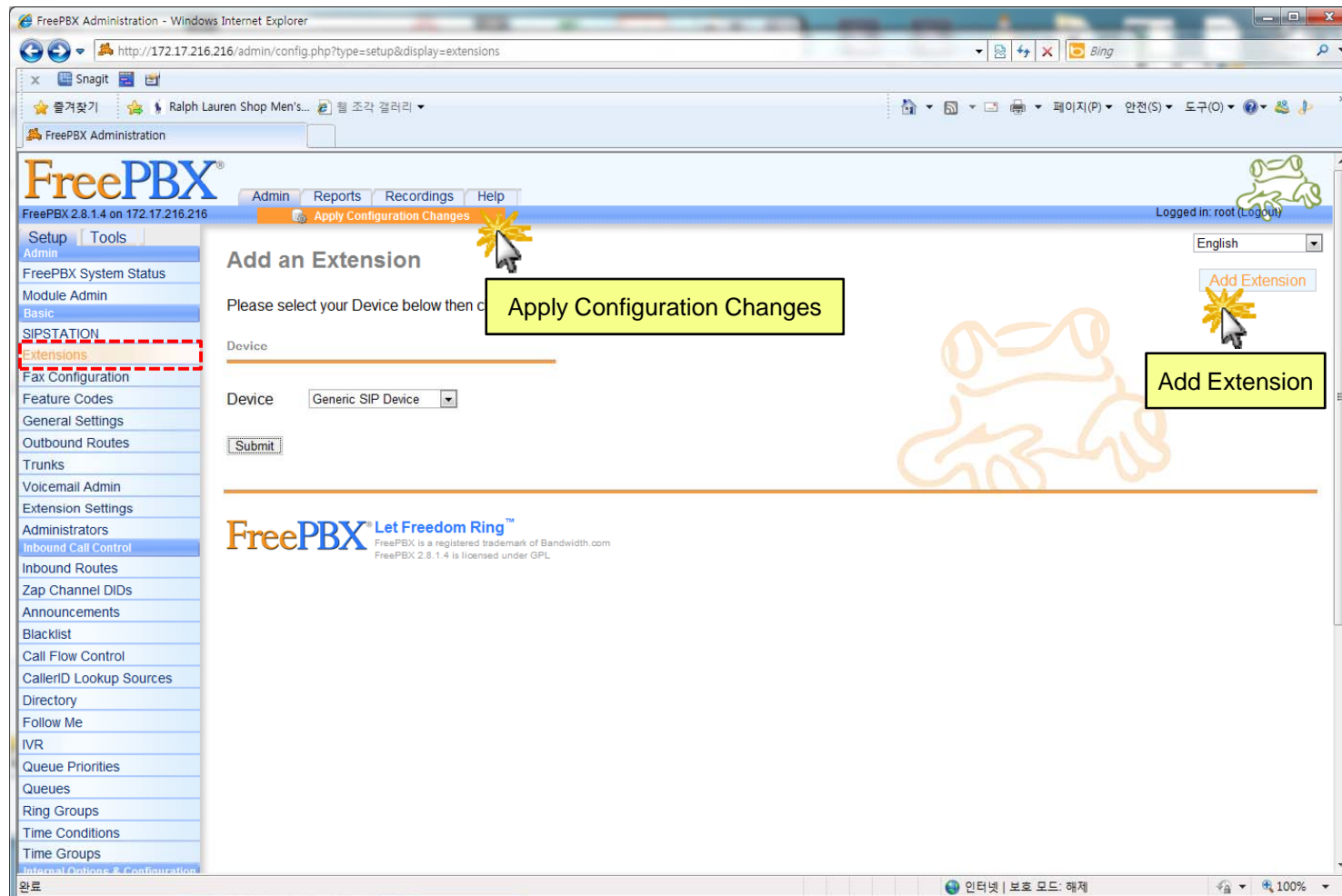
SIP Register

SIP Message Flow



SIP Register

Asterisk Free-PBX Add Extension



SIP Register

GSM Port Register to Asterisk Free-PBX

The screenshot shows the 'SIP (Session Initiation Protocol)' configuration page in the Smart Web Manager. The page is titled 'SIP (Session Initiation Protocol)' and contains several configuration fields. A red dashed box highlights the 'SIP Registration' section, which includes the following fields: 'Use SIP Server' (set to Yes), 'Primary SIP Server' (10.1.1.1, 5060), 'Secondary SIP Server' (5060), 'Local Domain Name' (empty), 'SIP Signaling Port' (5060), 'Register Expiration' (60), 'Session Re-Fresh' (set to INVITE), and 'Session Expire Time' (1800). A yellow callout box on the left points to the 'SIP Registration' section and contains the text: 'SIP Server Primary & Secondary server, Local domain name, SIP Signaling Port (reboot necessary) Timer * register expire * session refresh'. Another yellow callout box on the left points to the 'Primary SIP Server' field and contains the text: 'Connect to GSM Gateway's IP Address'. The right side of the page shows 'Information' and 'Description' sections.

Connect to GSM Gateway's IP Address

SIP Server
Primary & Secondary server,
Local domain name,
SIP Signaling Port (reboot necessary)
Timer
* register expire
* session refresh

SIP Register

GSM Port Register to Asterisk Free-PBX

Connect to GSM Gateway's IP Address

Mobile Extension

Configure GSM phone-number for receiving a call

Port Information

Port	P0	P1	P2	P3
SLOT 0	GSM	CSM	FXS	FXS
	FXS	FXO/EEM	E1/T1	Mobile

Mobile Extension Configuration

Pots Num	Port	Numbers	Preference	HuntStop	Control
	P0.0	1000	0	<input type="checkbox"/>	Delete Apply

* Mobile Extension - Assigned Pots Tag Number : 3048 - 3559

Mobile Extension with Translation

Rule Num	Port	Destination Pattern	Digits to Insert	Digits to delete
900	P0.0			
901	P0.1			

* Mobile Extension - Assigned Transtation-Rule Tag Number : 900 - 907

Information

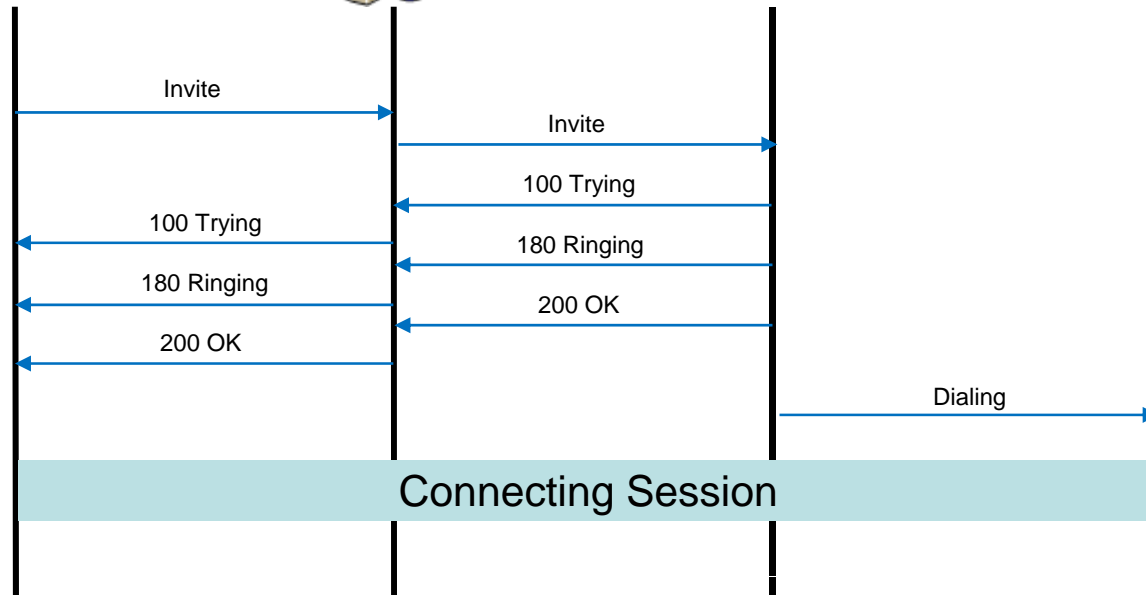
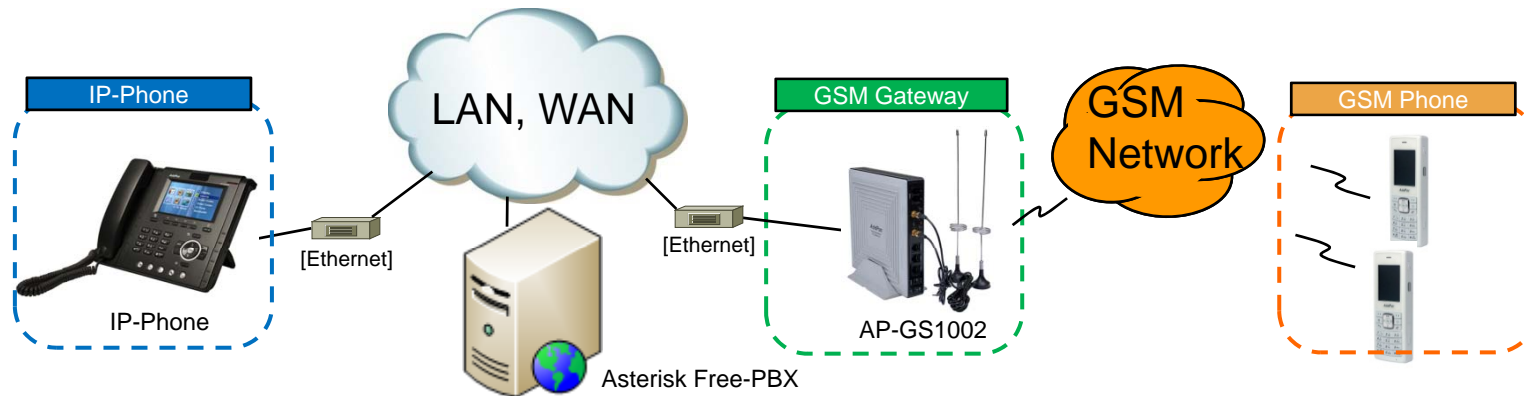
AddPac Technology
Model : GS1002_G2
HW Version : 2.0
SW Version : 8.51.008
Smart Web Version : 0.4
Smart Web Build : Apr 12 2012
Voice Interface : G2/S2
Protocol : SIP
Status : Unregistered
Current Calls : 0
CallNetwork : DHCP
172.17.1.82
Mac Address : 0002.a402.b97a
Unread Message : P0.0() P0.1()

Description

Set up for using Mobile port to extension number (forwarding No)

Call Flow

Asterisk Free-PBX Interworking GSM Gateway





Thank you!

AddPac Technology Co., Ltd.
Sales and Marketing

Phone +82.2.568.3848 (KOREA)

FAX +82.2.568.3847 (KOREA)

E-mail sales@addpac.com