



# AP-GSS5000™ 512Ch GSM SIM Server (Tower Type)

High Performance GSM SIM Server Solution



## Preliminary Product Overview

(Without notice, following described technical spec. can be changed)

***AddPac***

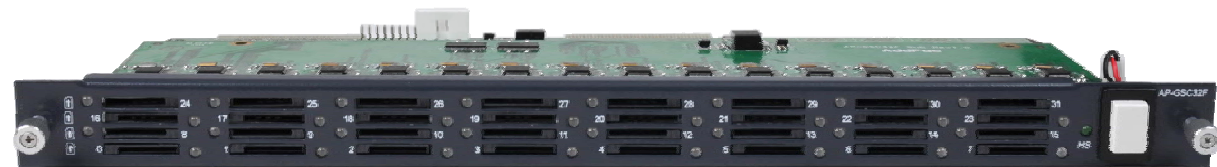
**AddPac Technology**

2013, Sales and Marketing

[www.addpac.com](http://www.addpac.com)

# Contents

- Product Overview
- Hardware Specification
- SIM Bank Module Specification
- APOS Technology
- Network Protocols
- Network Management
- Security Management
- Application Service
- Ordering Information



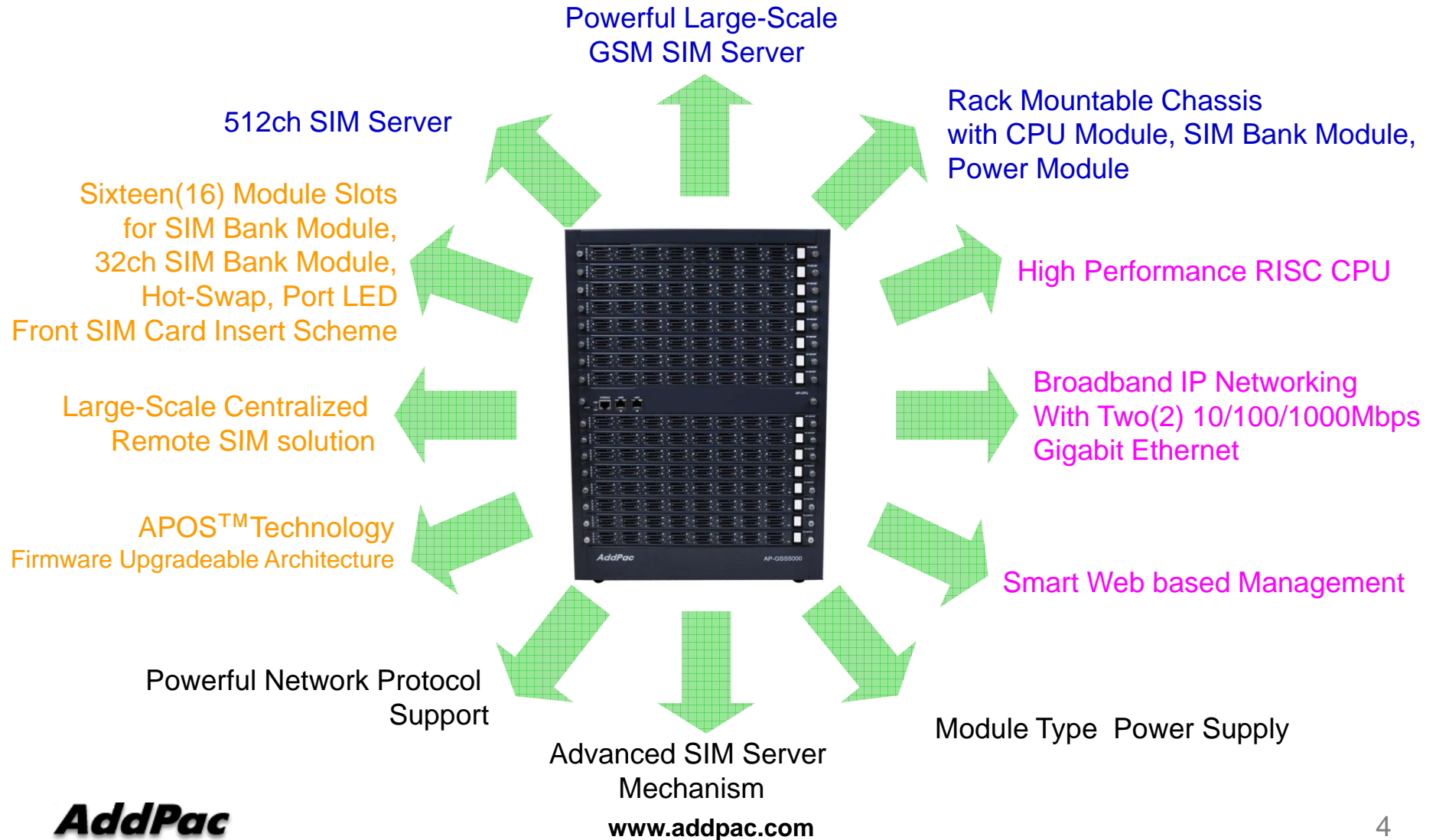
# Product Overview

## AP-GSS5000 GSM SIM Server

- Sixteen(16) Module Slots for 32ch SIM Bank Module (Up to 32x16=512ch SIM Slot, CPU Module)
  - Front SIM Card Insert Scheme
- High Performance RISC Microprocessor Architecture
- Remote SIM solution for Centralized Management
- Hot-Swap Service for SIM Bank Module
- Powerful Real-time Response Service using Embedded RTOS
- Powerful Network Protocols (PPPoE, DHCP, Static Routing, etc)
- Two(2)10/100/1000Mbps Gigabit Ethernet
- One(1) RS-232C Port for Command Line Interface
- Firmware Upgradeable Architecture
- Smart Web Manager for SIM Server
- Module Type Power Supply

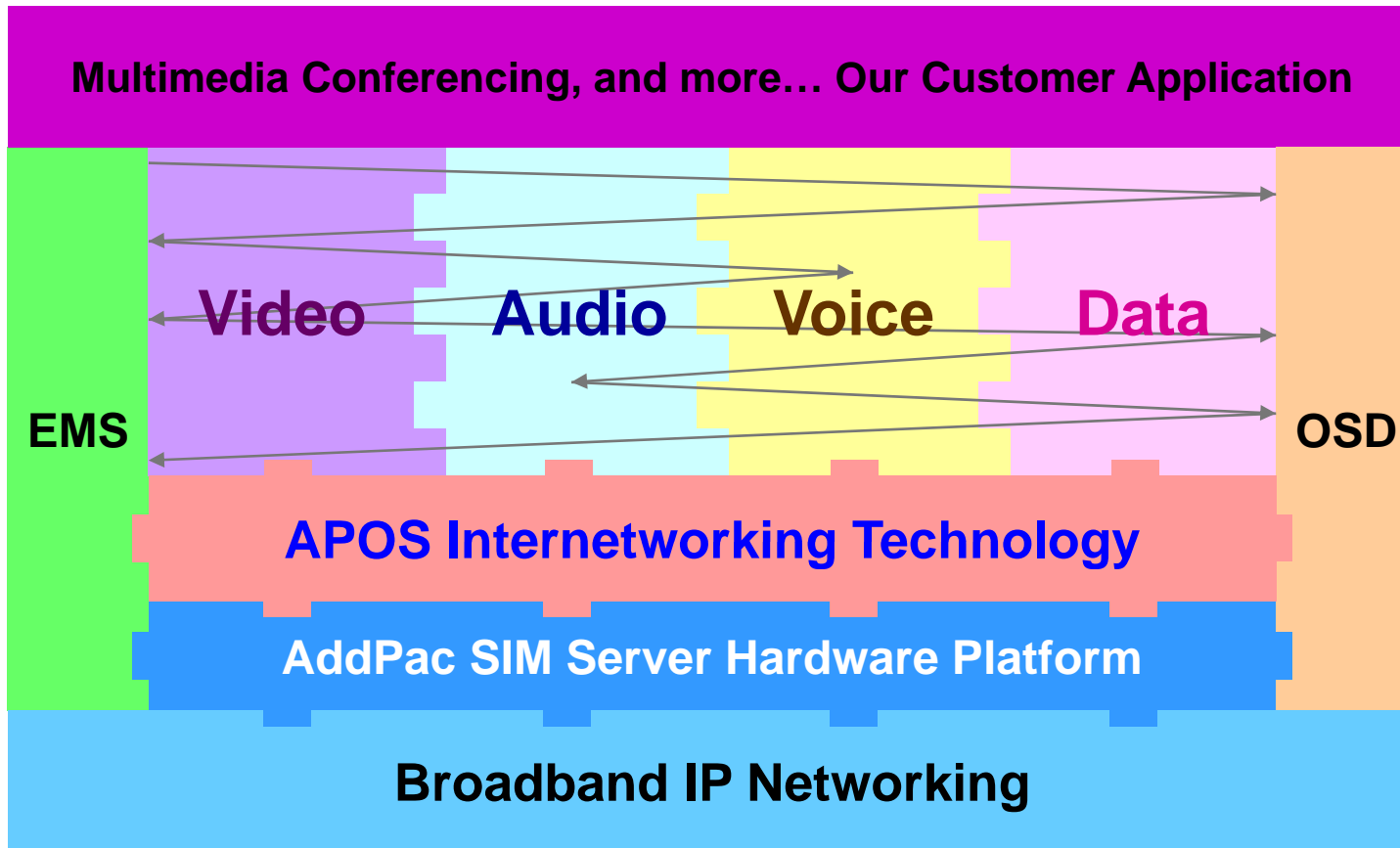
# Product Highlights

## AP-GSS5000 GSM SIM Server



# APOS Technology

AP-GSS5000 GSM SIM Server



- APOS : AddPac Internetworking Operating System
- OSD : On- Screen Display
- EMS : Element Management System

# Hardware Specification

AP-GSS5000 GSM SIM Server

RISC  
CPU

- RISC Microprocessor Computing Power
- High Performance CPU Module
- Sixteen(16) SIM Bank Module Slots
- 32ch GSM SIM Slot Module(AP-GSC32F)
  - 32ch SIM Card Slot
  - SIM Slot Status Port LED
  - Hot-Swap Button
  - Front SIM card insert scheme
- Network Interface
  - Two(2) 10/100/1000Mbps Gigabit Ethernet (RJ45)
- RS232C Console Interface for CLI
- Run LED, LAN LED, Port LEDs
- Module Type Power Supply



# Hardware Specification

AP-GSS5000 GSM SIM Server

RISC  
CPU

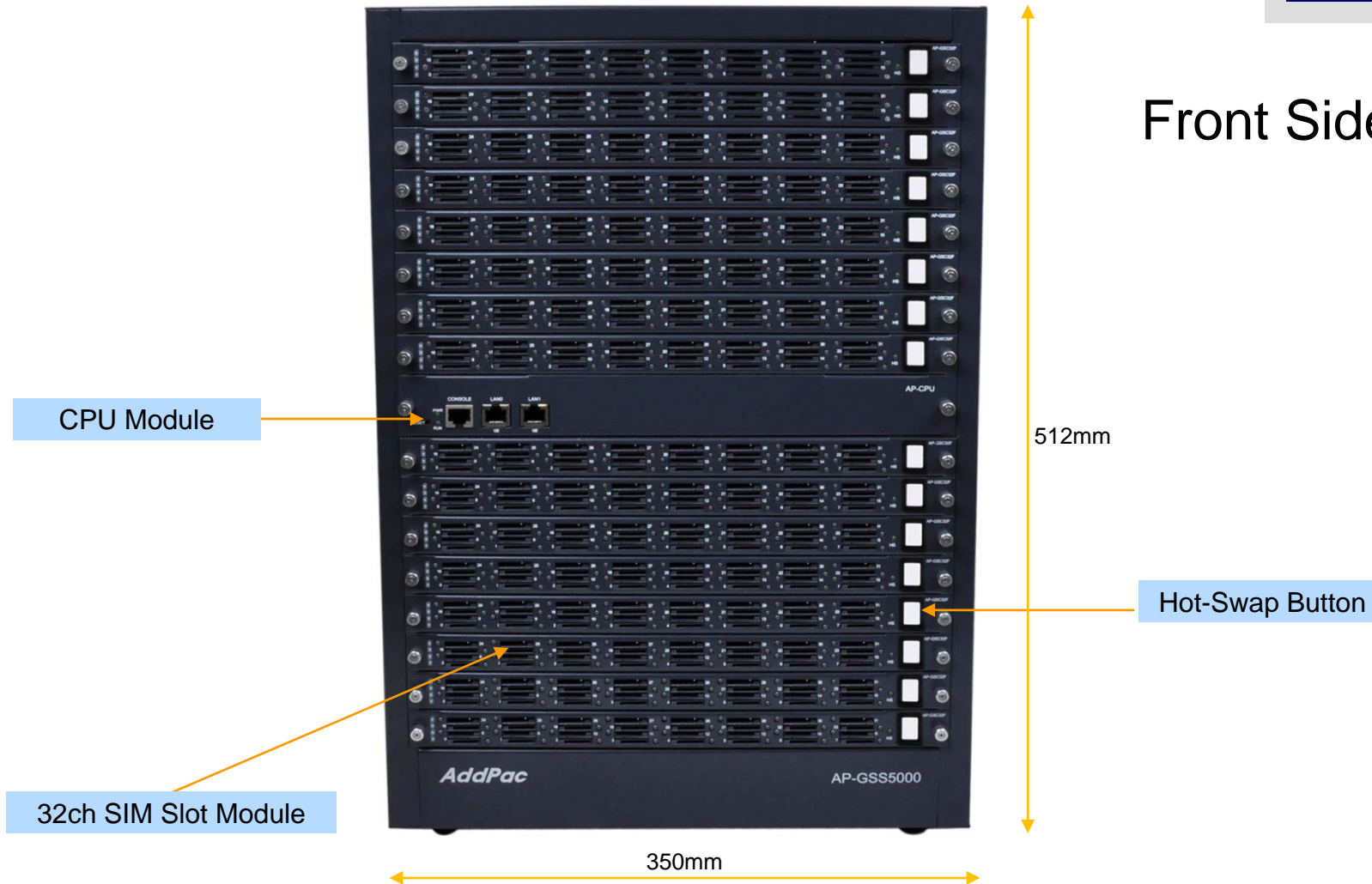
AP-GSS5000 GSM SIM Server	Basic Specifications
Voice Interface	Sixteen(16) Module Slots excluding CPU Module
	AP-GSC32F : 32channel GSM SIM Slot Module, Hot-Swap, Port Status LED
Ethernet Interface	2-Ports 10/100/1000Mbps Gigabit Ethernet Interface(RJ-45)
Flash Memory	512Mbyte NAND Flash Memory
Base Memory	128Mbyte High-speed DDR2
Power Requirement	Power Supply / VAC 110~220V, 50/60Hz, 5V 30A, Module Type Power Supply
Operating Temperature	0°C ~ 45°C (32 °F ~ 122°F)
Storage Temperature	-40°C ~ 85°C (-40°C ~ 185°F)
Relative Humidity	5% ~ 95% (Non-condensing)
Dimensions	H x W x D (512mm x 350mm x 250mm)
Weight(kg)	16.5Kg

# Hardware Specification

AP-GSS5000 GSM SIM Server

RISC  
CPU

Front Side View



**AddPac**

[www.addpac.com](http://www.addpac.com)



# Hardware Specification

AP-GSS5000 GSM SIM Server

RISC  
CPU

Back Side View



Cooling FAN

Power Module

Power Inlet (110~220V)

Power Switch

**AddPac**

[www.addpac.com](http://www.addpac.com)

# Hardware Specification

AP-GSS5000 GSM SIM Server

## SIM Bank Module

**AP-GSC32F** 32ch GSM SIM Slot Module



SIM Card Slot

SIM Status LED :  
Dual Color LED

Hot-Swap Button

**AddPac**

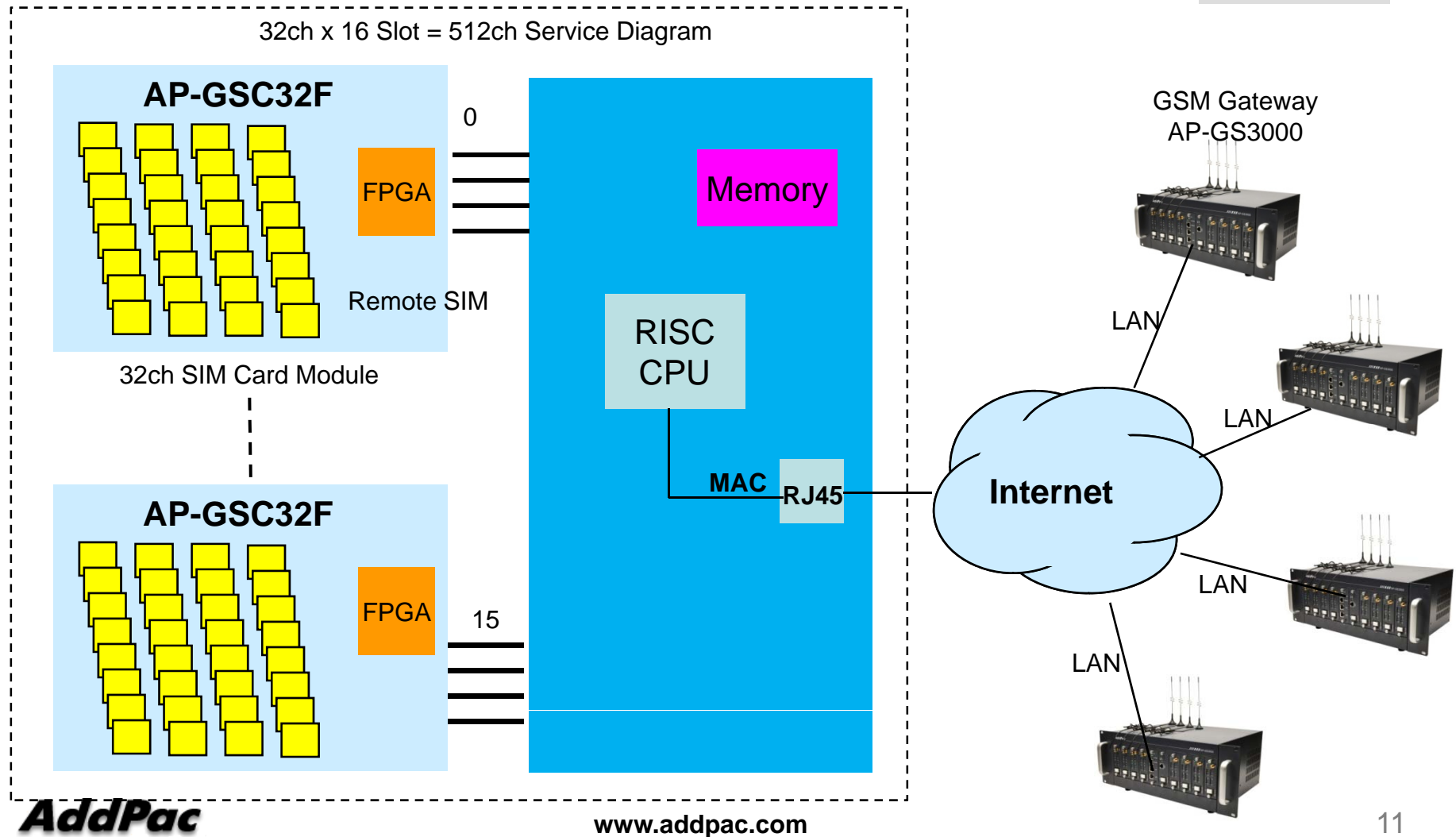
[www.addpac.com](http://www.addpac.com)

# Hardware Specification

AP-GSS5000 GSM SIM Server

RISC  
CPU

## GSM SIM Server Service Diagram



# Network Protocols

AP-GSS5000 GSM SIM Server

## Basic Network Protocols

- ARP, IPv4, TCP, UDP, ICMP, SCTP, IGMP, MLD

## Routing Protocol

- IPv4 : Static

## Service Protocol

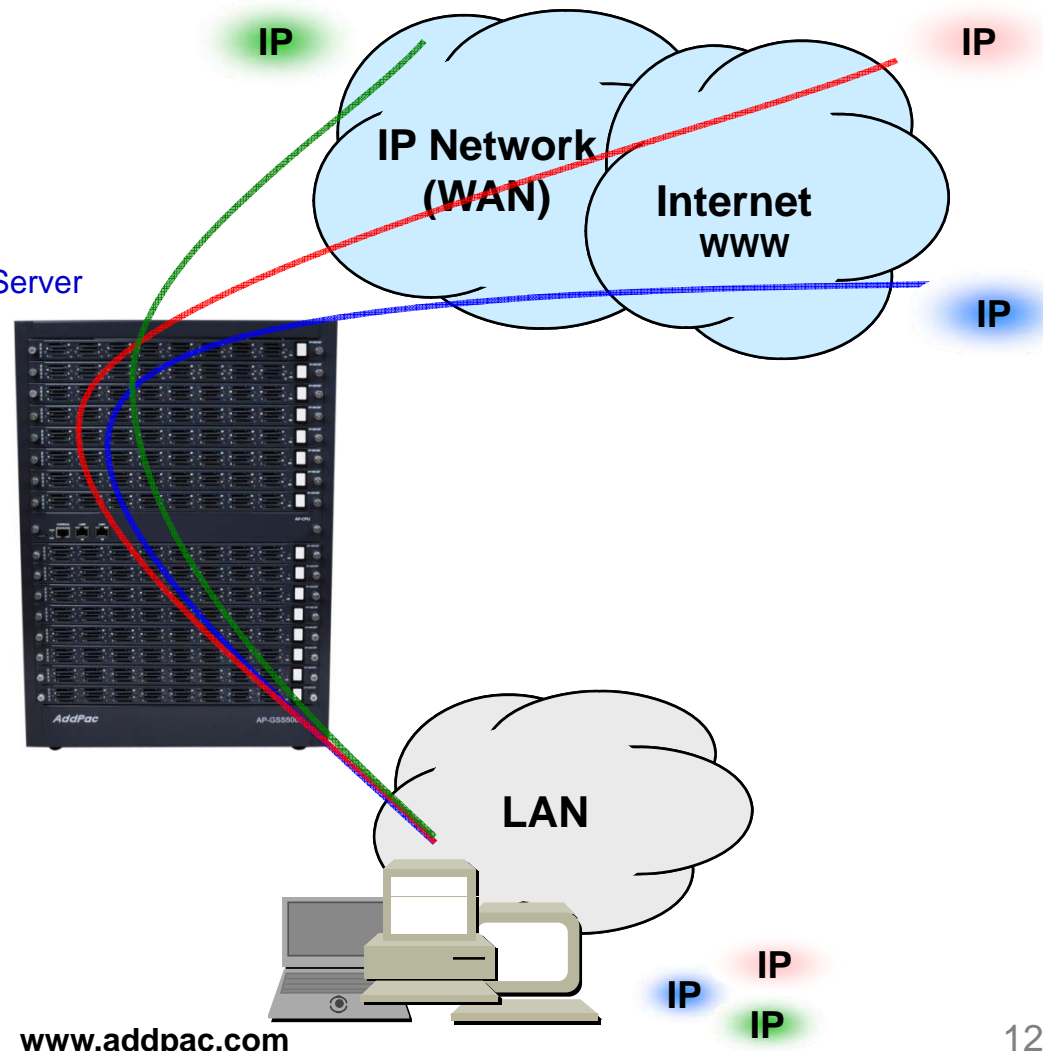
- FTP, Telnet, TFTP, DHCP Server/Relay, SNMP Server
- CDP (Cisco Discovery Protocol)
- DNS Resolver , DDNS(nsupdate)
- Bridge
- Syslog

## IPv4 Address Configuration

- Fixed (Static)
- DHCP
- PPPoE

## Miscellaneous

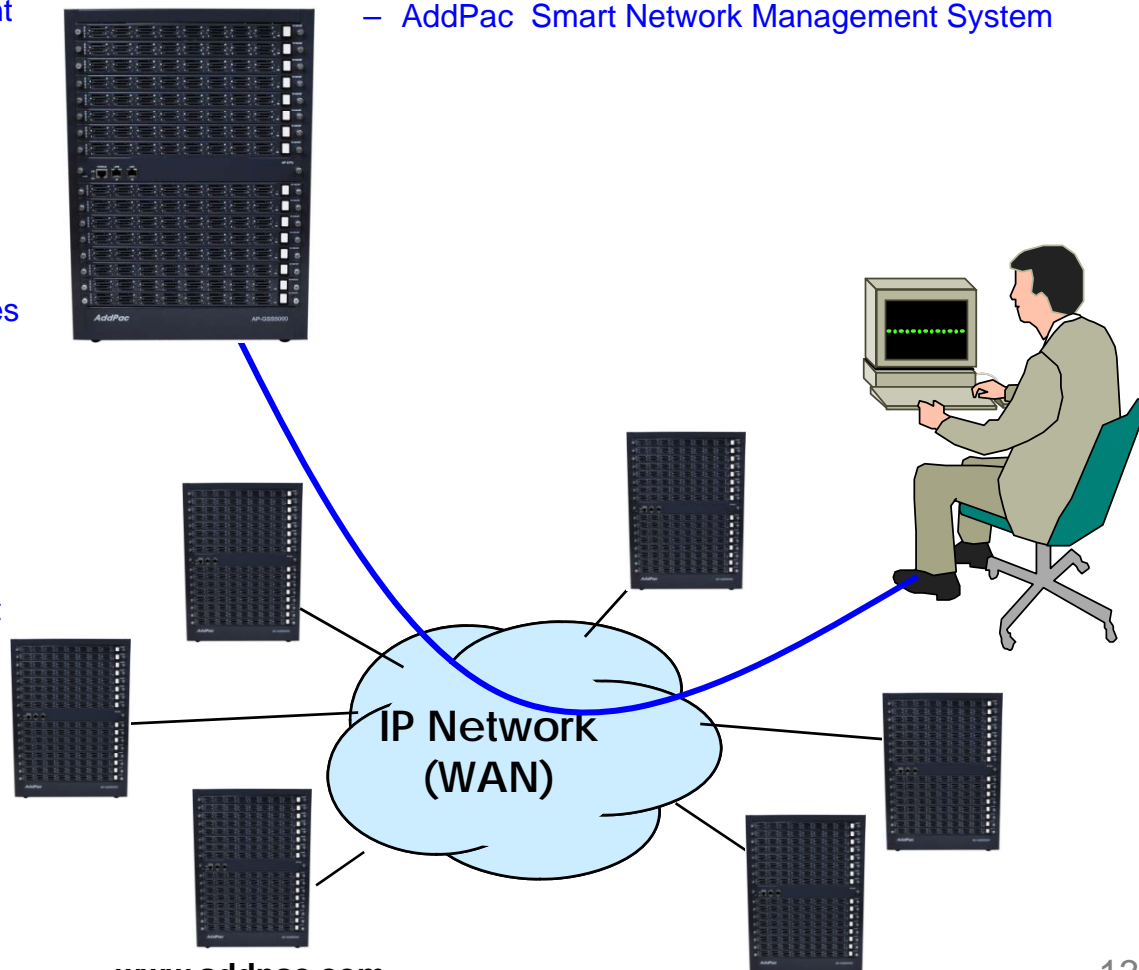
- Cisco Style CLI
- Standard & Extended IPv4 Access List
- Multi-level User Account Management
- IP accounting
- STUN Client



# Network Management

## AP-GSS5000 GSM SIM Server

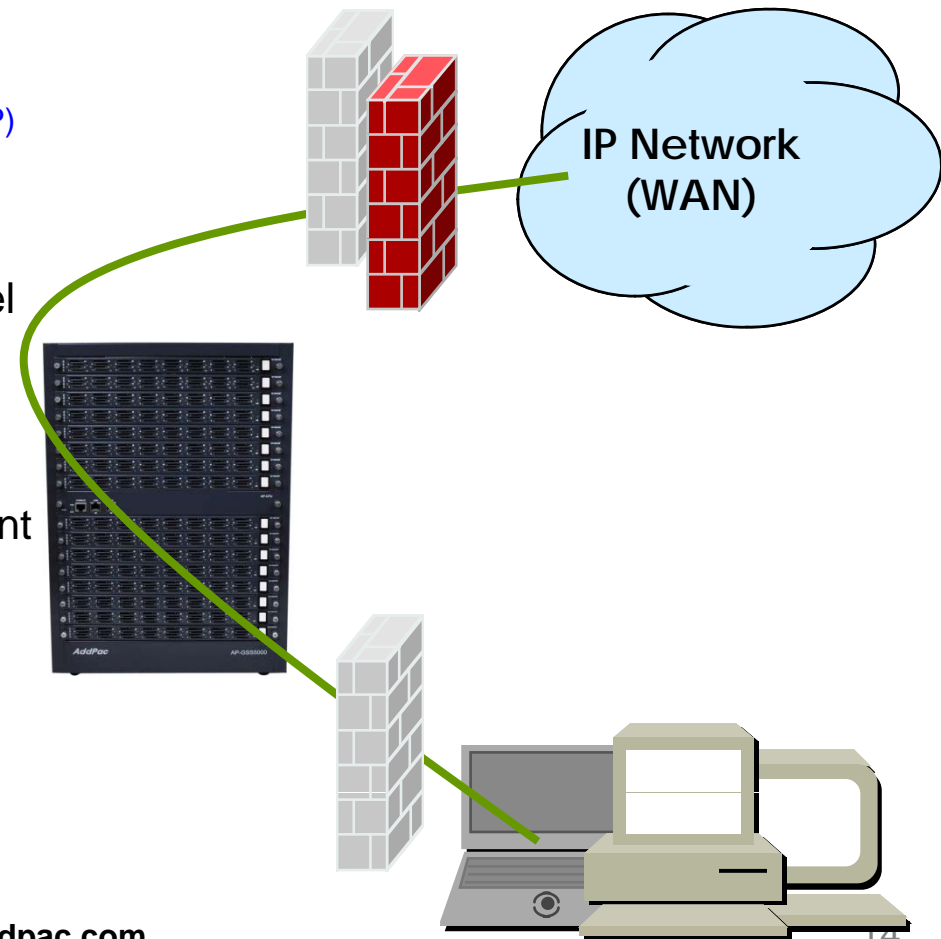
- SNMP
  - Standard Simple Network Management Protocol( SNMP) Agent support
  - MIB v1 and v2 Support
- Web-based Management
  - Smart Web Manager
- Watch-dog Function
  - Hardware, Software watch-dog services
- Remote Management
  - Telnet
  - Rlogin
- Auto Upgrade Service
  - HTTP server based APOS image and configuration file auto-upgrade support
- Batch Job Function
  - Text based script downloading
- Interoperable with Smart NMS Service
  - AddPac Smart Network Management System



# Security Management

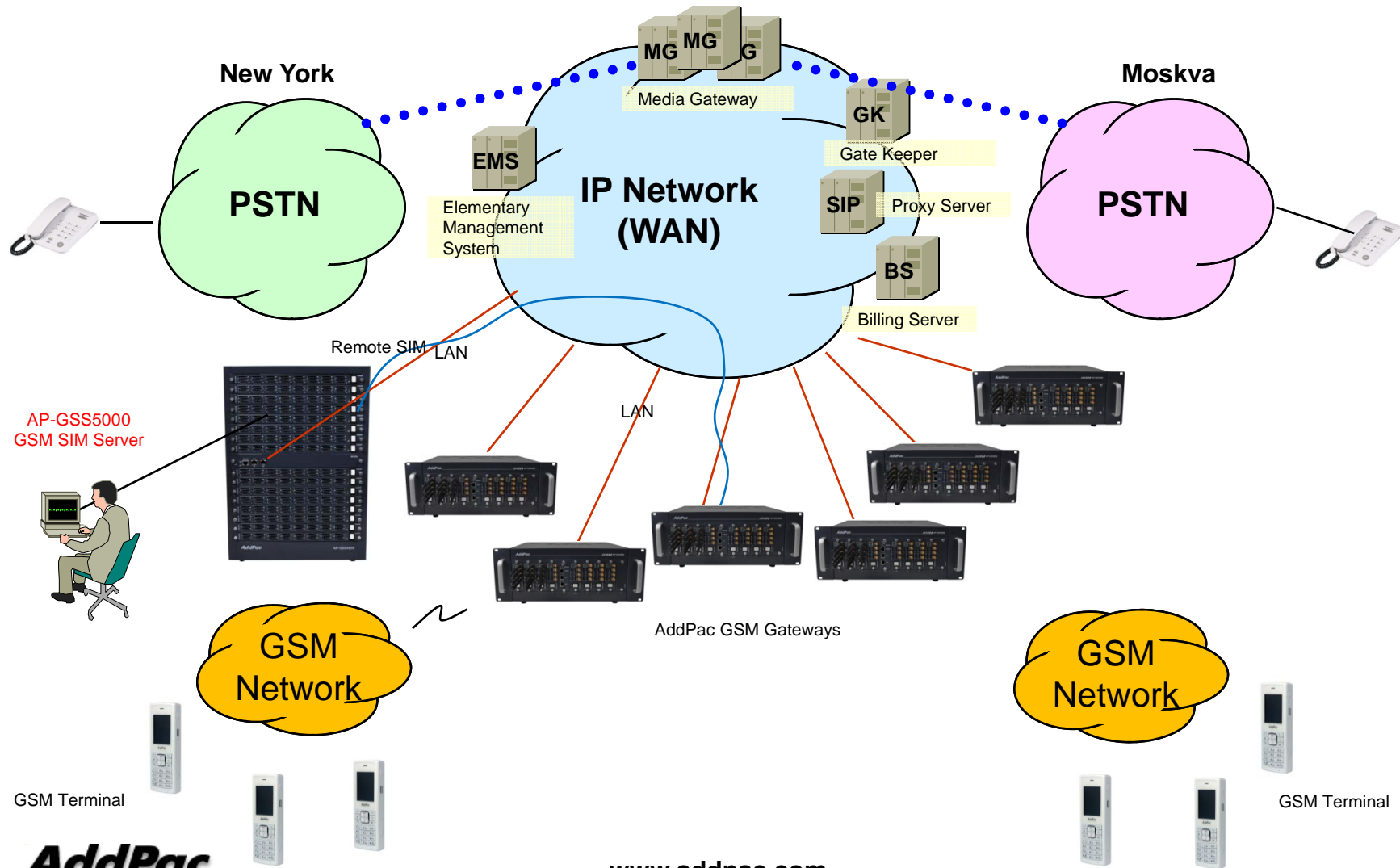
## AP-GSS5000 GSM SIM Server

- IP packet filtering
- IP access list
- User authentication function
  - Password Authentication Protocol (PAP)
  - Challenge Handshake Authentication Protocol (CHAP)
- Enable/Disable specific protocols
- Auto-square connect of Telnet session
- Account Management function for multi-level user
- SNMP/TELNET/FTP/HTTP/TFTP port assignment function
- SNMP/TELNET/FTP access list management
- Boot mode security checking function



# Standard Application

## AP-GSS5000 GSM SIM Server



**AddPac**

[www.addpac.com](http://www.addpac.com)

# Ordering Information

- AP-GSS5000 GSM SIM Server Hardware
  - AP-GSS5000 GSM Gateway Main Body
  - Sixteen(16) Module Slots excluding CPU Module
  - High-end Programmable RISC Microprocessor
  - 2-port 10/100/1000Mbps Gigabit Ethernet(RJ45)
  - 1-Port RS232C Console Interface(RJ45)
  - Option Module : AP-GSC32F GSM SIM Bank Module
  - Including Network Cable, Antenna, etc.
- Built-in APOS Internetworking Software for AP-GSS5000
- Including 1 Year Hardware Warranty
- Product Documents
  - Install and Operation Guide (PDF)
- Pricing
  - AddPac Technology Regional Sales Manager
  - Authorized Sales and Marketing Representatives
  - Please Contact [www.addpac.com](http://www.addpac.com)



# GSM SIM Server Series

# Thank you!

**AddPac Technology Co., Ltd.**  
Sales and Marketing

Phone +82.2.568.3848 (KOREA)

FAX +82.2.568.3847 (KOREA)

E-mail [sales@addpac.com](mailto:sales@addpac.com)