



# AP-VP250™

## BcN IP Video Phone

High Performance Broadband Convergence Network IP  
Video Phone Solution



## User Presence Features



IPNext2000 IP-PBX

# **AddPac**

**AddPac Technology**

2012, Sales and Marketing

[www.addpac.com](http://www.addpac.com)

# Contents

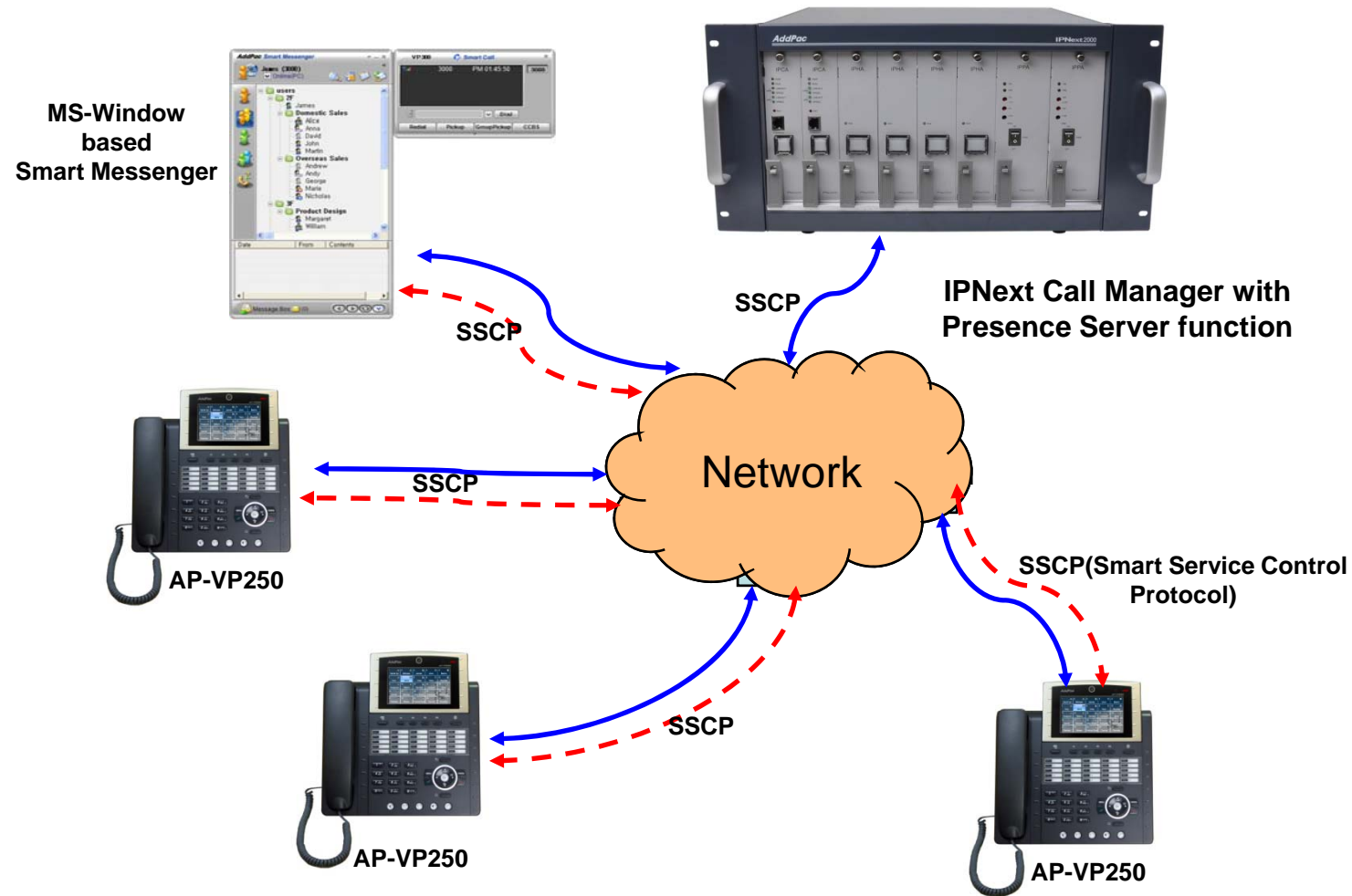
- Overview
- IP Telephony Network Diagram for User Presence Service
- AP-VP250 User Presence Feature
- AP-VP250 User Presence UI
  - Presence Server Input
  - Presence Service Enable
    - Presence Server Login Success
  - Speed Button Profile Select
    - Speed Button Profile Update Notification
  - Speed Button Map View
    - Indicate User Presence Information on LED Lamp
  - Speed Button List View
  - Speed Button Modify



# Overview

- Used to support User Presence Service and Speed Dial
- Inter-operate Presence Server and Call Manager
  - Support User Presence Information
  - Support two or more Speed Button Profile List
- Support Speed Button Interface
  - Speed dialing service
  - Support User(Phone Number) Presence Information on LCD Screen and LED
  - Editable global speed button profile, and Save in Phone

# IP Telephony Network Diagram for User Presence Service



# AP-VP250 User Presence Feature

- **AP-VP250 Supports**
  - User Login and Logout Feature
  - Presence Server Setup
    - Maximum 5 Presence Server Setup
    - Enable/Disable Connection to Presence Server
  - Select Profile
    - Get Speed Button Profile (Global Profile) from Presence Server
    - Select Speed Button Profile in profile list received from Presence Server
    - With Speed Button Profile, user can edit as you want (change to Private Profile)

# AP-VP250 User Presence Feature (cont.)

- Phone Book Feature
  - Speed Button view in Map type and List type
  - Speed Button Delete, Modify
  - Represent User Presence Information on OSD in real-time
  - AP-VP250 Phone Book itself Supports
    - Group Create, Modify, Delete
    - Contact Add, Delete, Modify
    - Search Contact by number, name, speed dial number
  
- Speed Button LED
  - Get User Presence Information in real-time
  - Connect Call using one Button (no need to press all dial digits)

# AP-VP250 User Presence UI



# Presence Server Input

Server Name	IP Address	Port
Presence Server 1	172.17.	5051
Server1 Port		5051
Presence Server 2	172.17.252.2	
Server 2 Port		5051
Presence Server 3		
Server 3 Port		

NUM1 1 2 3 4 5 6 7 8 9 \*./ 0 #

BackSpace OK Save All Input Mode

- Presence Server
  - Input Presence Server IP address and Port number to Connect, maximum 5 server info enable
  - Support IPv4, IPv6 address
  - Terminal try to connect to the first server, if it fails, terminal try to connect to next Presence Server



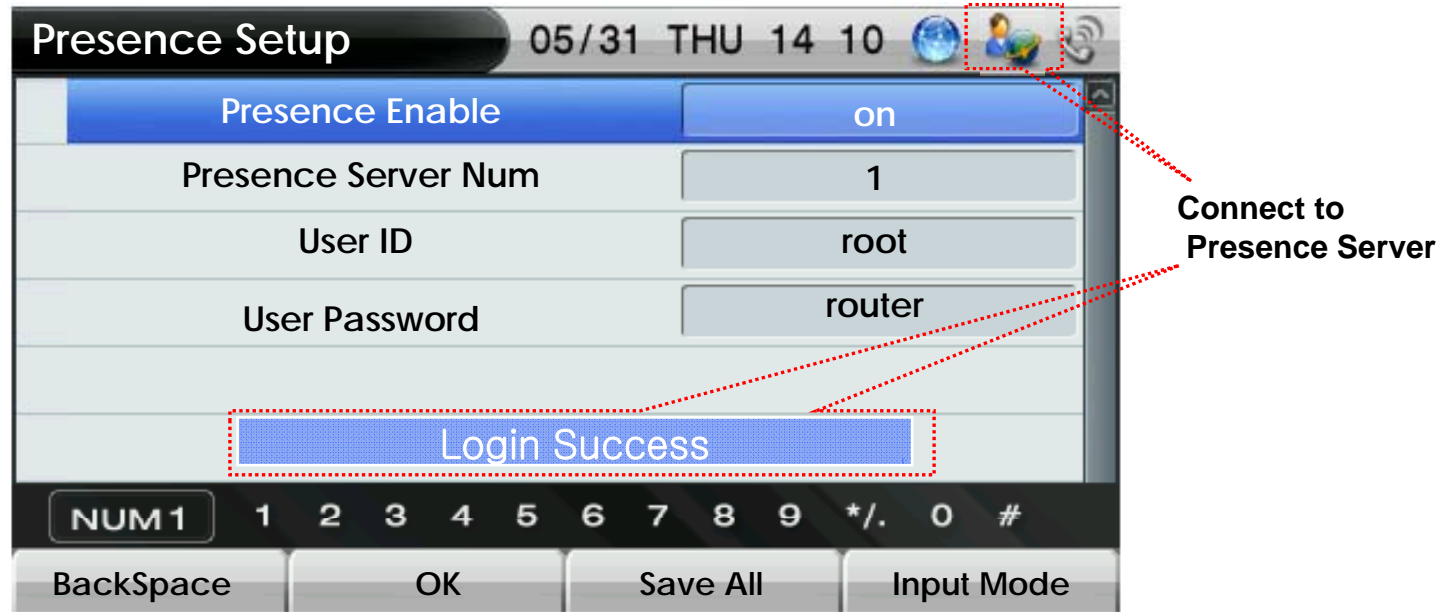
# Presence Service Enable

Field	Value
Presence Enable	on
Presence Server Num	1
User ID	root
User Password	router

Toggle using left/right arrow key

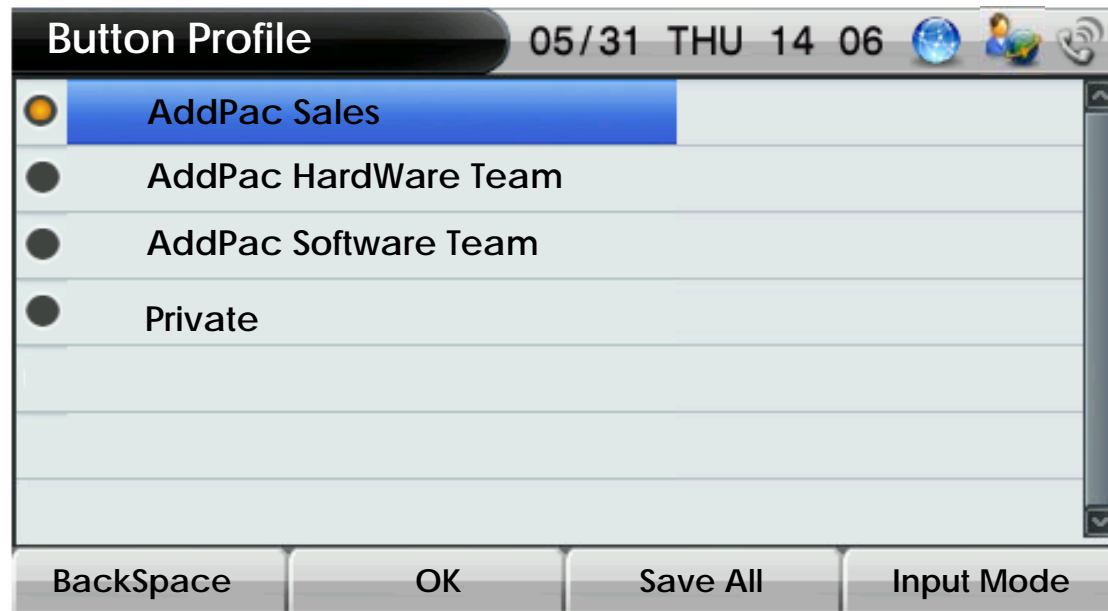
- Presence Setup
  - Presence Function enable/disable
  - Presence Server Num : the number of Presence Server in Presence Server List (This Can't be editable by user)
  - User Id, Password for Presence Server Login

# Presence Server Login Success



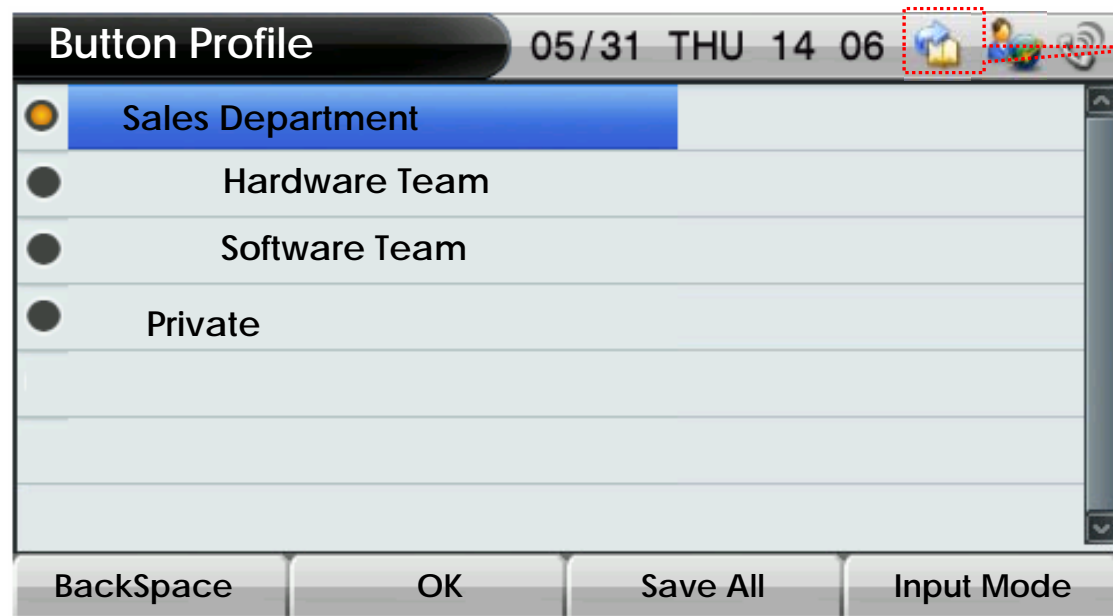
- After input Login Information, Press OK
  - Login result popup on the bottom
  - Icon Change on right side of the top
  - If Login is success ,“Login Success” Message will appear on the bottom of the screen

# Speed Button Profile Select





- After connect to Presence Server, Terminal get Speed Button Profile List from Presence Server
  - User can Get Speed Button Profile which you select in list
  - If user don't want to get Speed Button Profile, select 'Private'. User can register or modify Speed Button Profile as user want.

# Speed Button Profile Update Notification



Speed Button Profile  
Update Notify

- When Speed Button Profile Update Notify comes
  - Icon Change to 
  - After select Speed Button Profile, user get Updated Speed Button Profile from Presence Server and Icon Change back to 

# Speed Button Map View

Phone number      State

Name

1000 Jim	1001 Eujin	1002 Cindy	1003 Carry	1004 Olson
1005 Matthew	1006 Anji	1007 Jeorge	1008 Pitt	

Idle Status Icons

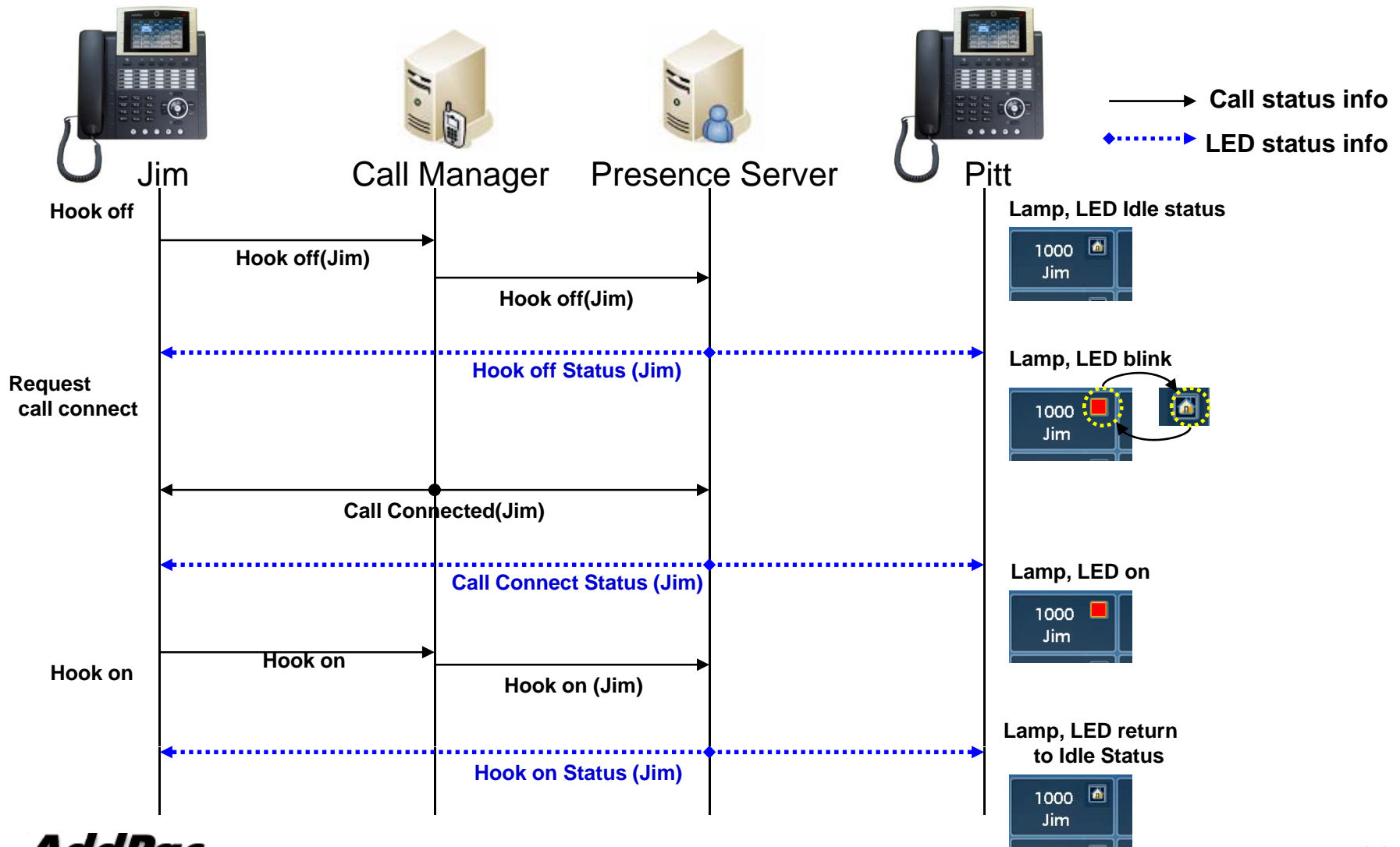
- Home
- Office
- CellPhone
- Etc

Call Status Icon

- Icon, LED on : hook off, calling status
- Icon, LED Blink : ringing status

- Show Button Profile in Map Type. The layout is same as Speed Button Keys on the KeyPad
- Icon means
  - In Idle Status : place of phone number
  - In Call Status : Lamp and LED turn on or blink. Each means difference status.

# Indicate User Presence Information on LED Lamp



# Speed Button List View



Number	Icon	Name	Number
1	House	Jim	1000
2	Building	Eujin	1001
3	House	Cindy	1002
4	House	Carry	1003
5	Building	Olson	1004
6	Building	Matthew	1005
7	Phone	Anji	1006

Buttons: Delete, Modify, View Map

- Show Button Profile in List Type.
  - If you want to call to Cindy, move to number 3(Cindy), press *OK* or *Send key*
  - Enable delete or modify speed button (Button Profile will change to 'Private')
  - Icon represents the place of a phone number

# Speed Button Modify

Modify Button

Name	Jim
Number	2000
Type	Home

ENG A 2 ABC 3 DEF 4 GHI 5 JKL 6 MNO 7 PQRS 8 TUV 9 WXYZ

BackSpace OK Save All Input Mode

- Modified Button Information Save in Local.
- After change Phone Number, user can get presence information for new number.





# Thank you!

**AddPac Technology Co., Ltd.**  
Sales and Marketing

Phone +82.2.568.3848 (KOREA)

FAX +82.2.568.3847 (KOREA)

E-mail [sales@addpac.com](mailto:sales@addpac.com)