



Asterisk Free-PBX

Multi-Port GSM Gateway

High Performance GSM Gateway Solution

Asterisk Free-PBX interworking



AddPac

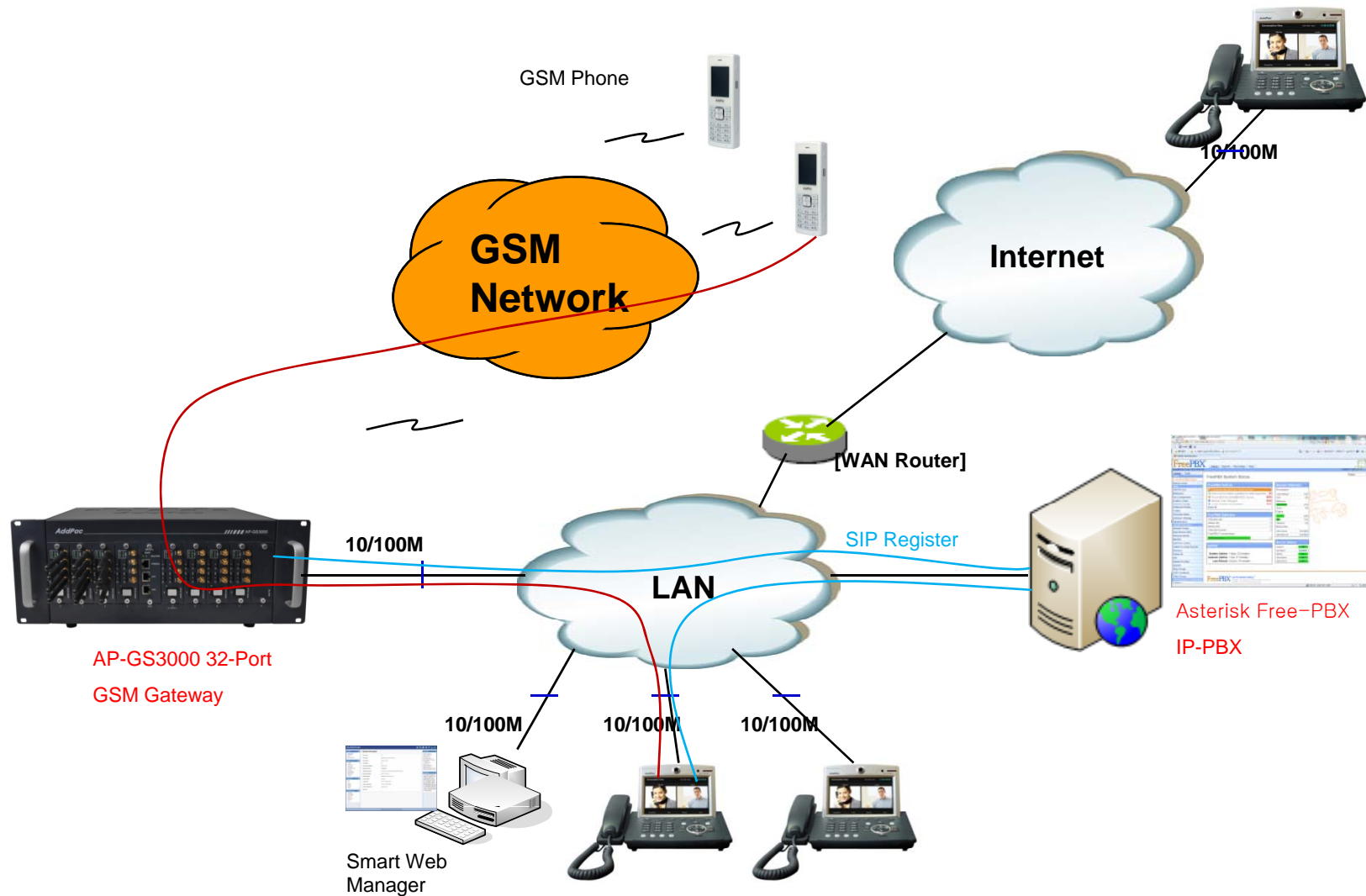
AddPac Technology

2012, Sales and Marketing

Contents

- Asterisk Free-PBX Interworking Network Diagram
- Register to Asterisk Free-PBX
 - SIP Message Flow
 - Asterisk Free-PBX Add Extension
 - GSM Port Register
- Call Flow

Network Diagram

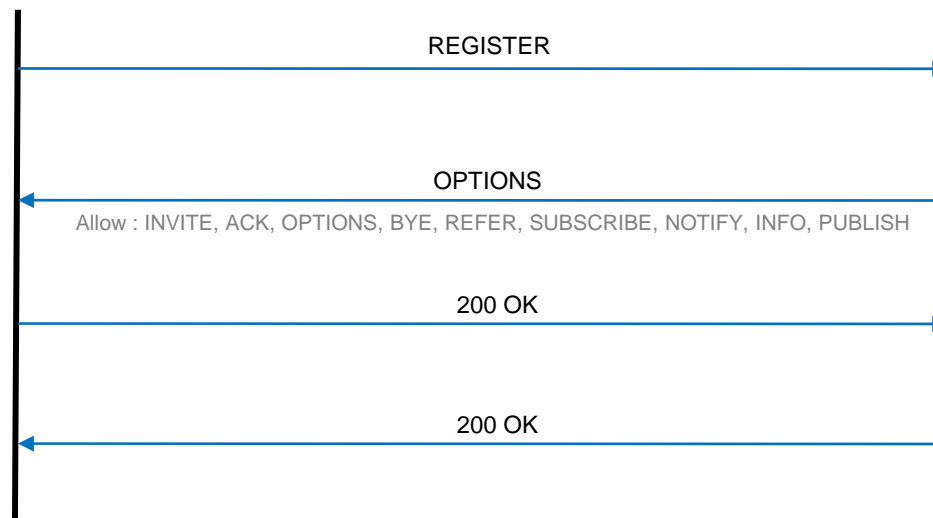
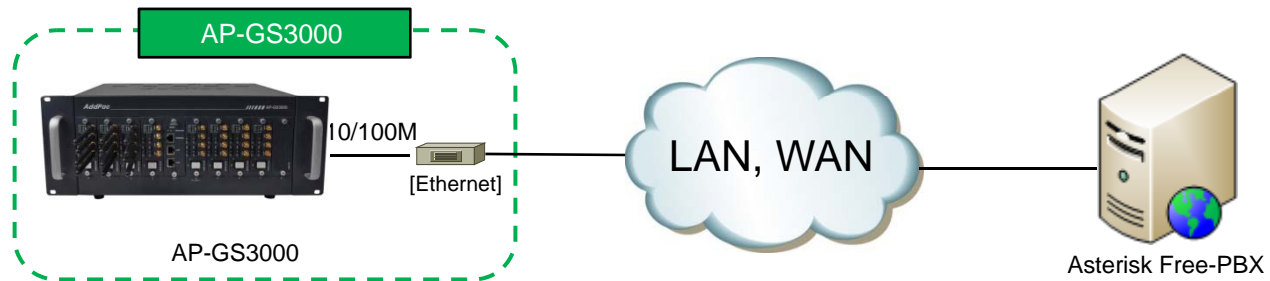


AddPac

www.addpac.com

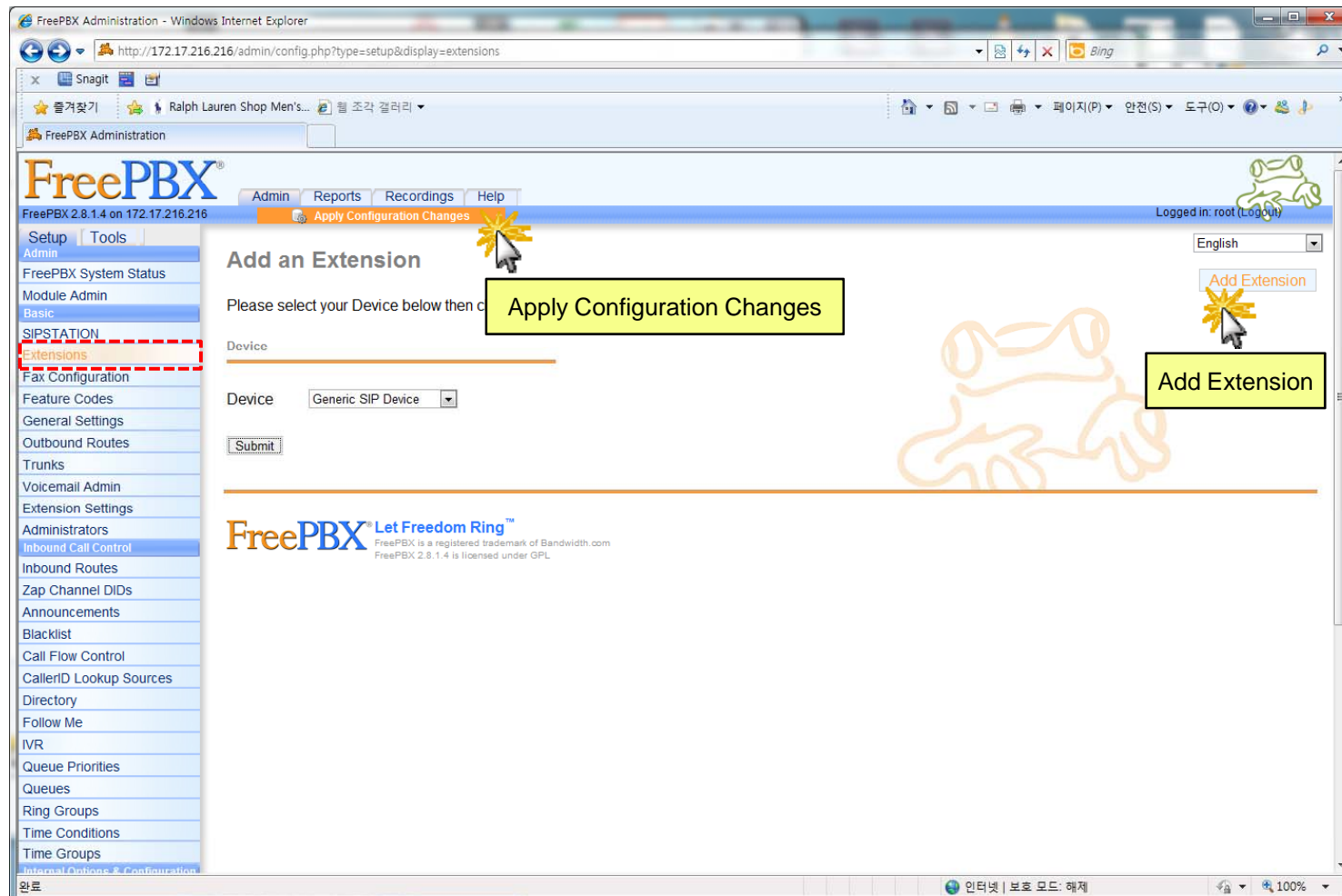
SIP Register

SIP Message Flow



SIP Register

Asterisk Free-PBX Add Extension



SIP Register

GSM Port Register to Asterisk Free-PBX

Connect to GSM Gateway's IP Address

SIP (Session Initiation Protocol)

Use SIP Server Yes No

Primary SIP Server Server address and Port (default 5060)

Secondary SIP Server Server address and Port (default 5060)

Local Domain Name (SIP userpart of authentication)

SIP Signaling Port (default 5060, between 1 to 65535)

Register Expiration (in seconds, default 60, between 10 to 86400)

Session Re-Fresh INVITE UPDATE

Session Expire Time (in seconds, default 1800, between 30 to 86400, 0 = disable)

1800 (in seconds, default 1800, between 30 to 86400)

SIP Server
Primary & Secondary server,
Local domain name,
SIP Signaling Port (reboot necessary)
Timer
* register expire
* session refresh

Information

AddPac Technology
Model : GS1002_G2
HW Version : 2.0
SW Version : 0.51.008
Smart Web Version : 0.4
Smart Web Build : Apr 12 2012
Voice Interface
G2(S/G2)
Protocol : SIP
Status : Unregistered
Current Calls : 0
CallNetwork : DHCP
172.17.1.82
Mac Address : 0002.a402.b97a
Unread Message:
P0: 0(0)
P0: 1(0)

Description

Configure the settings for SIP.
Contact your service provider
for the settings

SIP Register

GSM Port Register to Asterisk Free-PBX

Connect to GSM Gateway's IP Address

Mobile Extension

Configure GSM phone-number for receiving a call

Smart Web Manager

Mobile Extension

Port Information

Port	P0	P1	P2	P3
SLOT 0	GSM	CSM	FXS	FXS
	FXS	FXO/EEM	E1/T1	Mobile

Mobile Extension Configuration

Pots Num	Port	Numbers	Preference	HuntStop	Control
	P0.0	1000	0	<input type="checkbox"/>	Delete Apply

* Mobile Extension - Assigned Pots Tag Number : 3048 - 3559

Mobile Extension with Translation

Rule Num	Port	Destination Pattern	Digits to Insert	Digits to delete
900	P0.0			
901	P0.1			

* Mobile Extension - Assigned Translation-Rule Tag Number : 900 - 907

Information

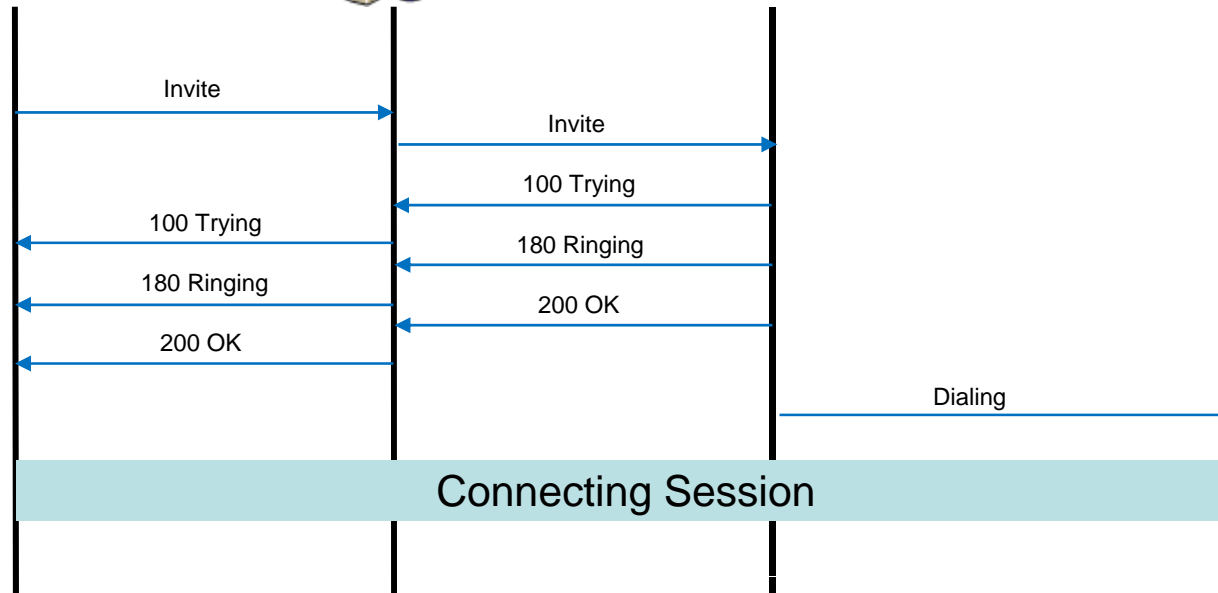
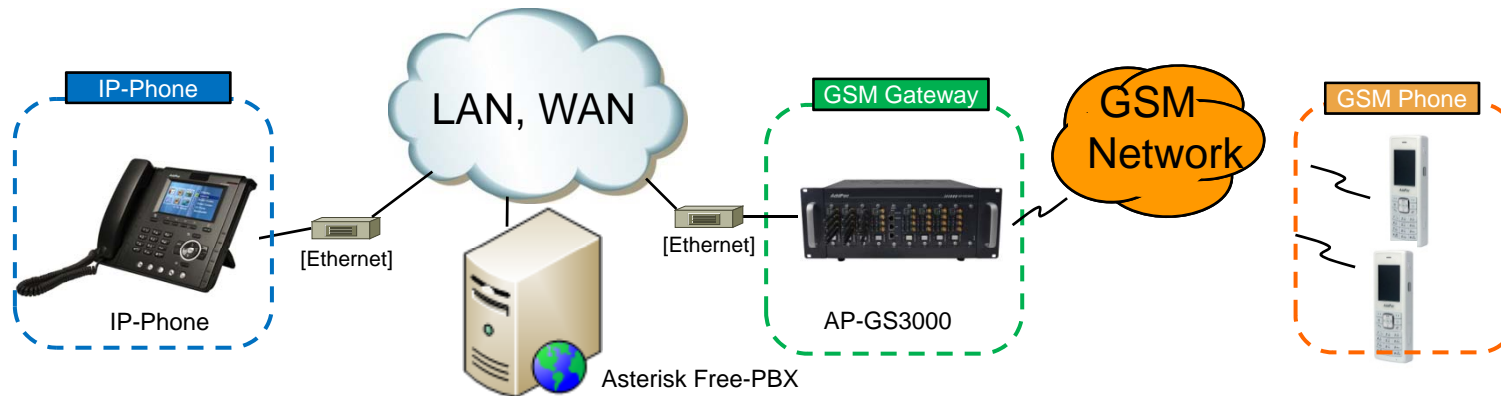
AddPac Technology
Model : GS1002_G2
HW Version : 2.0
SW Version : 8.51.008
Smart Web Version : 0.4
Smart Web Build : Apr 12 2012
Voice Interface : G2/S2
Protocol : SIP
Status : Unregistered
Current Calls : 0
CallNetwork : DHCP
172.17.1.82
Mac Address : 0002.a402.b97a
Unread Message : P0.0() P0.1()

Description

Set up for using Mobile port to extension number (forwarding No)

Call Flow

Asterisk Free-PBX Interworking GSM Gateway





Thank you!

AddPac Technology Co., Ltd.
Sales and Marketing

Phone +82.2.568.3848 (KOREA)

FAX +82.2.568.3847 (KOREA)

E-mail sales@addpac.com