



IPNext350™

Hybrid IP-PBX System

High-performance Hybrid IP-PBX Solution

IVR Scenario Editor Features



AddPac

AddPac Technology

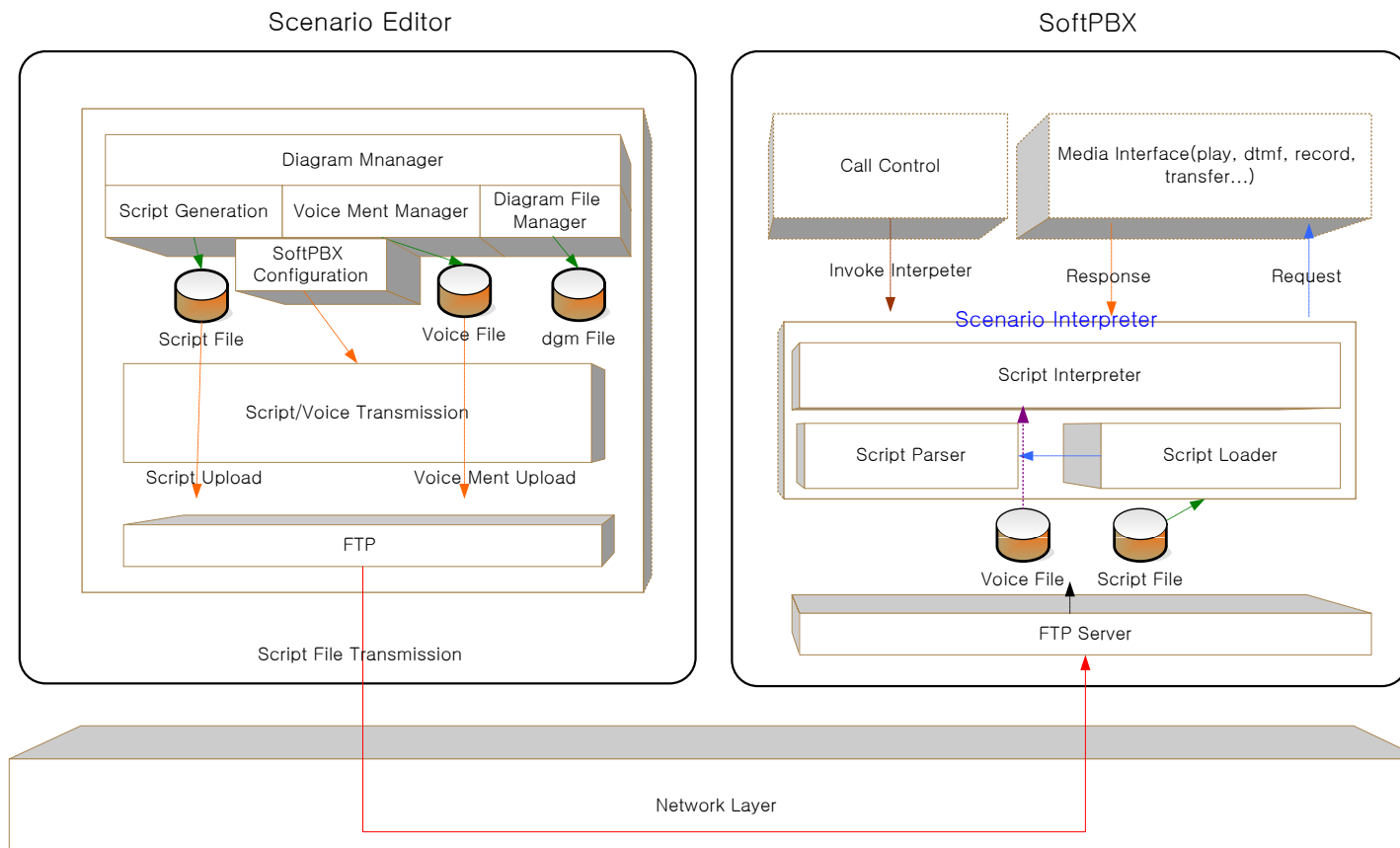
2012, Sales and Marketing

www.addpac.com

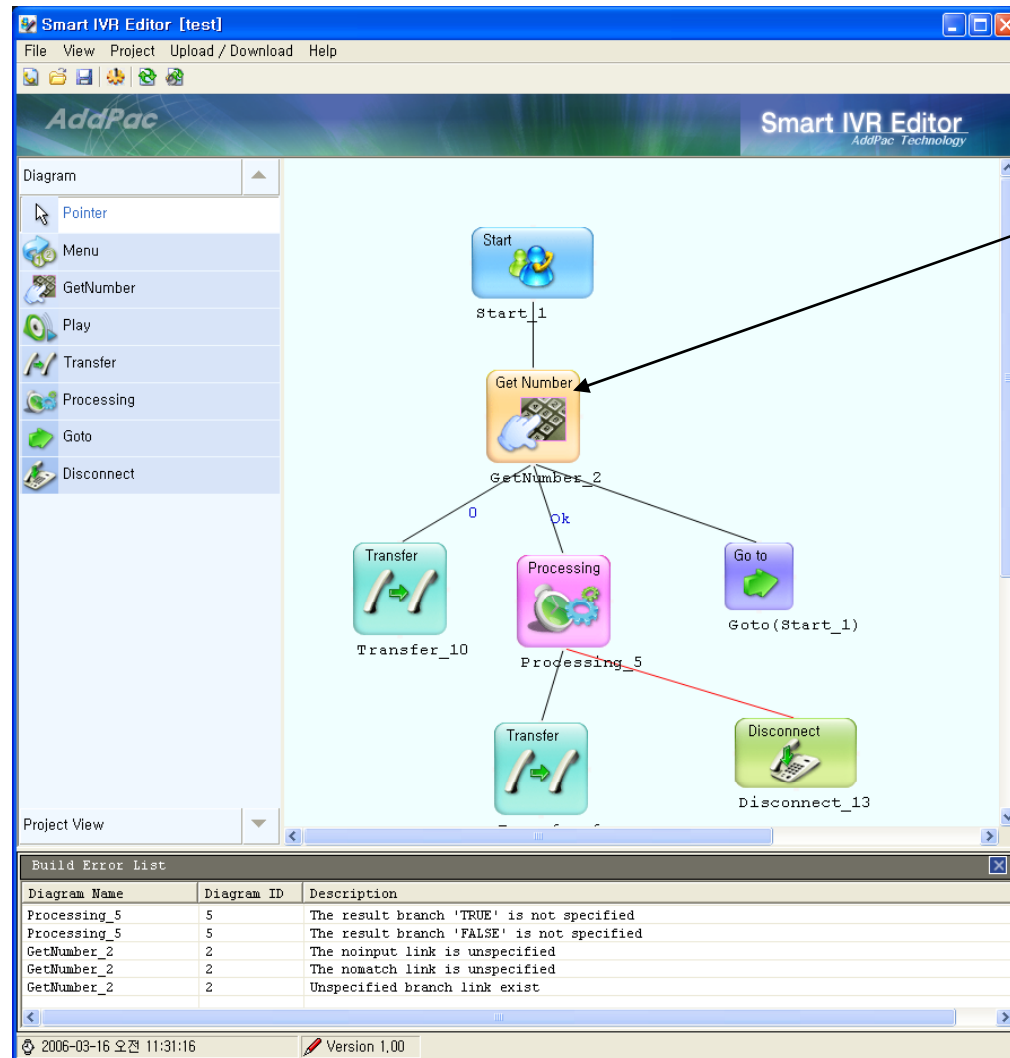
Contents

- IVR Scenario Editor Architecture
- IVR Scenario Editor Creation
- IVR Editor Component Property
- IVR Scenario Management
- Common Voice File Management

IVR Scenario Editor Architecture



IVR Scenario Editor Creation

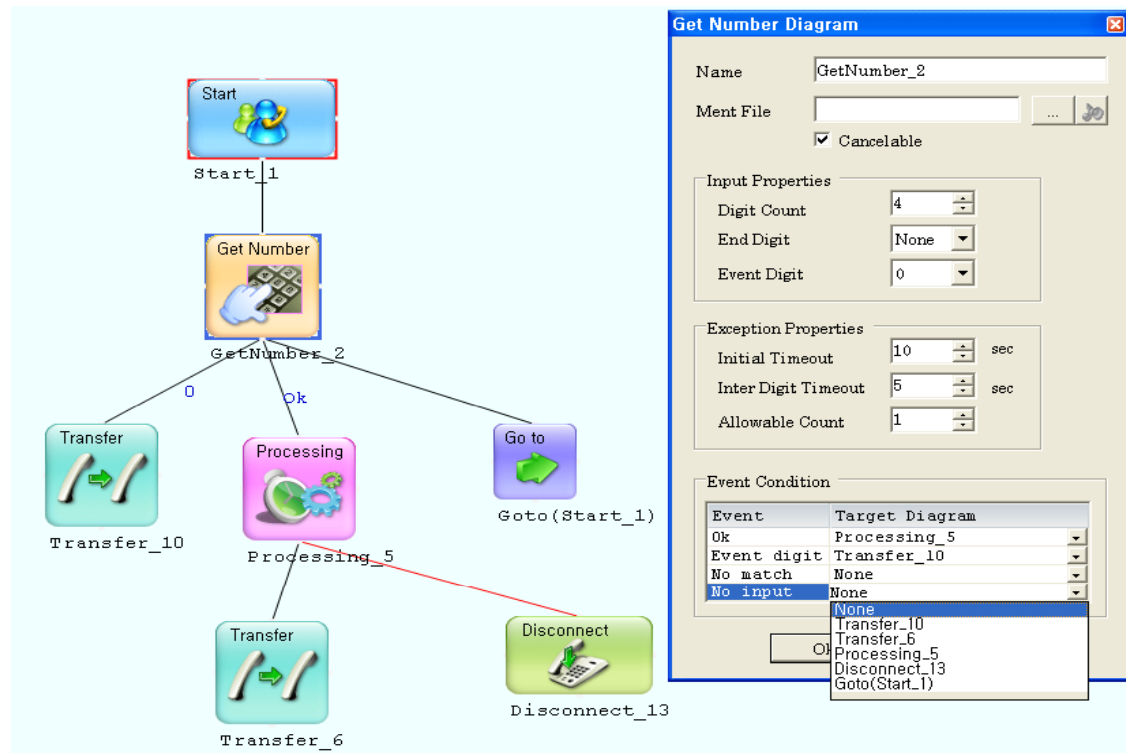


Component

IVR Scenario Editor Creation

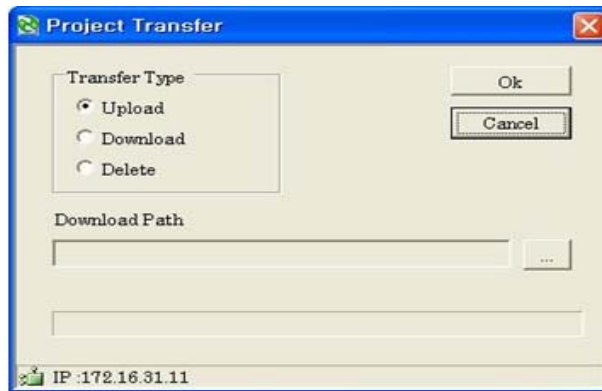
- GUI based IVR Scenario Editor
- Support Pre-defined Component (DTMF Input, Call Transfer, Voice File Play, etc)
- Support Project Template File for Easy Modification and Reference.
- Support Pre-Defined IP-PBX System API and Additional Customization API
- Support IVR Scenario Creation Error Debugging Features

IVR Editor Component Property

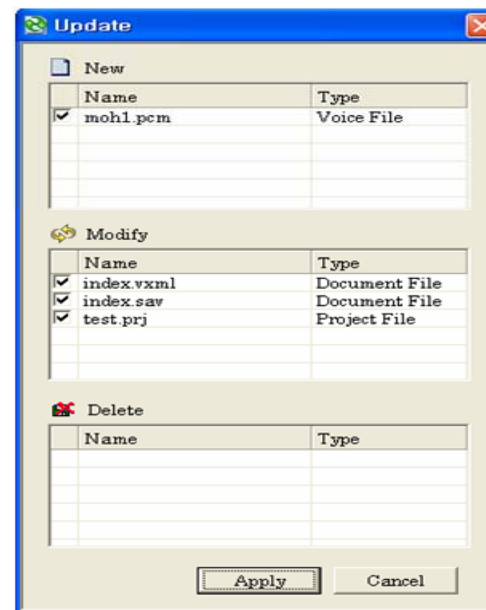


- Support the Property Setting for Component Flow Diagram (Input Event, Exception Properties, Event Condition)
- Provides the different IVR Component Flow depend on Event Condition

IVR Scenario Management



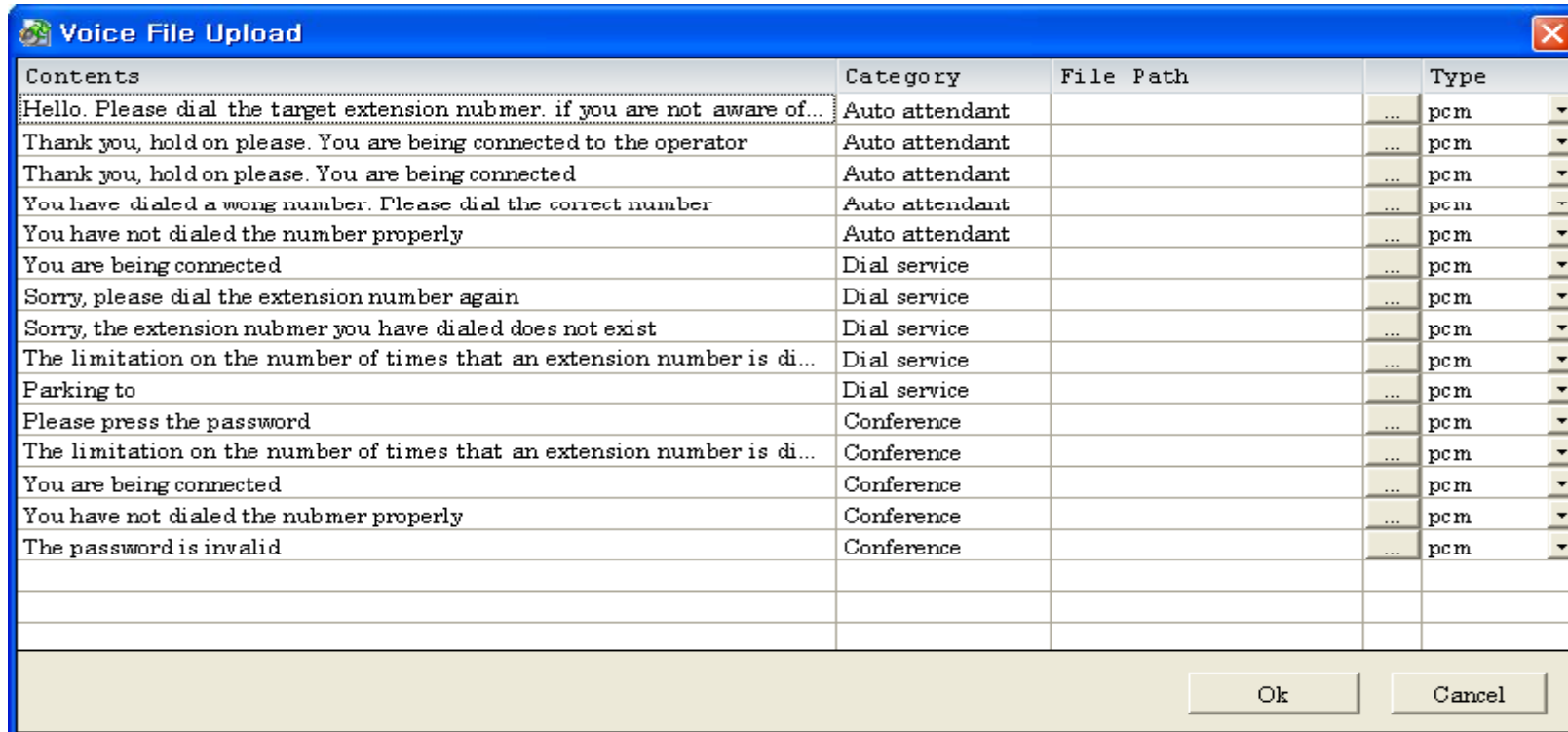
Project Transfer



Project Update

- IVR Scenario Script File can be upload or download to (from) IP-PBX.
- IVR Scenario Script File Version Control (Update, Add and Delete)
- Register Service with Smart Multimedia Manager

Voice Announcement File Management



The screenshot shows a window titled "Voice File Upload" with a close button in the top right corner. The window contains a table with four columns: "Contents", "Category", "File Path", and "Type". The "Contents" column lists various voice messages, the "Category" column lists their respective categories, and the "Type" column lists the file format as "pcm". The "File Path" column is currently empty. At the bottom of the window, there are "Ok" and "Cancel" buttons.

| Contents | Category | File Path | Type |
|--|----------------|-----------|------|
| Hello. Please dial the target extension nubmer. if you are not aware of... | Auto attendant | | pcm |
| Thank you, hold on please. You are being connected to the operator | Auto attendant | | pcm |
| Thank you, hold on please. You are being connected | Auto attendant | | pcm |
| You have dialed a wong number. Please dial the correct number | Auto attendant | | pcm |
| You have not dialed the number properly | Auto attendant | | pcm |
| You are being connected | Dial service | | pcm |
| Sorry, please dial the extension number again | Dial service | | pcm |
| Sorry, the extension nubmer you have dialed does not exist | Dial service | | pcm |
| The limitation on the number of times that an extension number is di... | Dial service | | pcm |
| Parking to | Dial service | | pcm |
| Please press the password | Conference | | pcm |
| The limitation on the number of times that an extension number is di... | Conference | | pcm |
| You are being connected | Conference | | pcm |
| You have not dialed the nubmer properly | Conference | | pcm |
| The password is invalid | Conference | | pcm |
| | | | |
| | | | |
| | | | |

Voice File Upload

- Voice Announcement File Upload and Download for Backup

IPNext IP-PBX Series

Thank you!

AddPac Technology Co., Ltd.
Sales and Marketing

Phone +82.2.568.3848 (KOREA)

FAX +82.2.568.3847 (KOREA)

E-mail sales@addpac.com