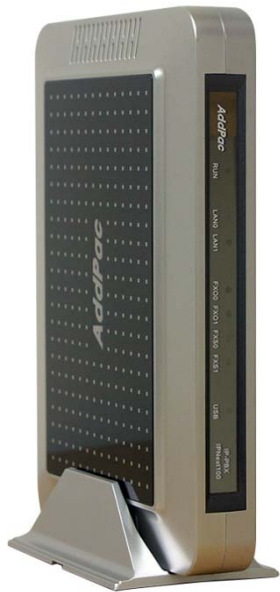


# IPNext IP-PBX Solution for SOHO



IPNext100 IP-PBX



IPNext50 IP-PBX



IPNext20 IP-PBX

**AddPac**

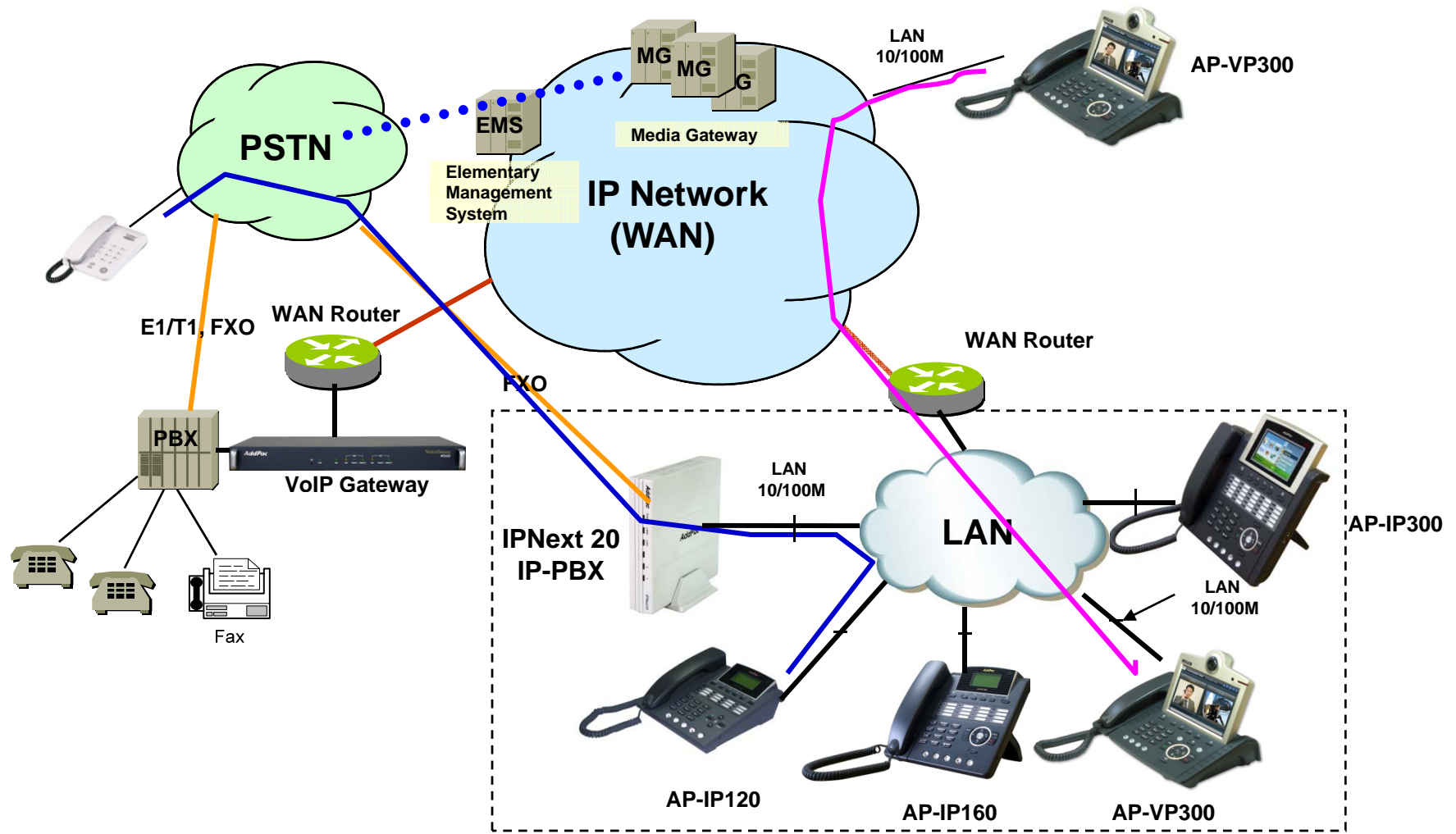
**AddPac Technology**

2010, Sales and Marketing

# Contents

- IPNext SOHO IP-PBX Service Diagram
- IPNext SOHO IP-PBX Comparison Table
- IPNext SOHO IP-PBX Series
  - IPNext150 IP-PBX
  - IPNext100 IP-PBX
  - IPNext50 IP-PBX
  - IPNext20 IP-PBX
- AddPac IP Terminals, Soft Phone, Smart Messenger
- IP Video Phones for IPNext SOHO
- IP Phones for IPNext SOHO
- SMM (Smart Multimedia Manager) for IPNext SOHO

# IPNext SOHO IP-PBX Service Diagram



# IPNext SOHO IP-PBX Comparison Table

Model		IPNext150	IPNext100	IPNext50	IPNext20
Service Features					
Registration User Number		70	50	30	10
Concurrent Call User Number		35	20	15	5
IPv4/IPv6 Dual Stack Support		Support	Support	Support	Support
VoIP Signaling	Internal	SIP	SIP	SIP	SIP
	External	H.323/SIP	H.323/SIP	H.323/SIP	H.323/SIP
Powerful IVR, UMS, Media Service, User Presence Service		Support	Support	Support	Support
RTP Proxy Service (IPv6, Private IP)		Support	Support	Support	Support
LAN Port		2	2	2	2
USB Interface		N/A	Support	Support	Option
FXO, FXS Interface		N/A	Option	Option	Option

# IPNext150 SOHO IP-PBX



# Main Features

## IPNext150 IP-PBX for SOHO

- SIP Application Server, Proxy, Registrar and Location Server
- Multiple ITSP Trunk with SIP & H.323 Accounts Support
- High Performance Programmable RISC Architecture
- Two(2) 10/100Mbps Fast Ethernet (IP Share ,etc)
- High Performance LAN-to-LAN Routing Capability
- Powerful Network Protocols (PPPoE, DHCP, Static Routing, etc)
- IPv4/IPv6 Dual Stack
- RTP Proxy Function Embedded for Private IP and IPv6 Address Interworking
- Presence Service Features for Smart Multimedia Messenger and Smart IP Phone
- IVR Scenario Editor, Voice Mail, Third Party Conference (G.711)
- Firmware Upgradeable Architecture
- Smart Multimedia Manager for IP-PBX Management
- Smart Messenger Service for UC
- VPMS (VoIP Plug&Play Management System) for Large Scale Deployment
- Advanced Voice QoS Mechanism
- Small, Light and Compact Design
- 2.5 Inch Hard Disk
- Power Switch for Stability and Status LEDs

# Hardware Specification

IPNext150 Next Generation IP-PBX

RISC  
CPU

- RISC Microprocessor Computing Power
- Main Chassis
  - Network Interface
    - Two(2) 10/100Mbps Fast Ethernet
    - One(1) RS-232C Console (RJ45)
  - One(1) 2.5 Inch Hard Disk Interface Slot



# Hardware Specification

IPNext150 Next Generation IP-PBX



## IPNext150 Front Side

Hard Disk Module



Read/Write Access LED    Hot-Swap Switch & LAMP Indication

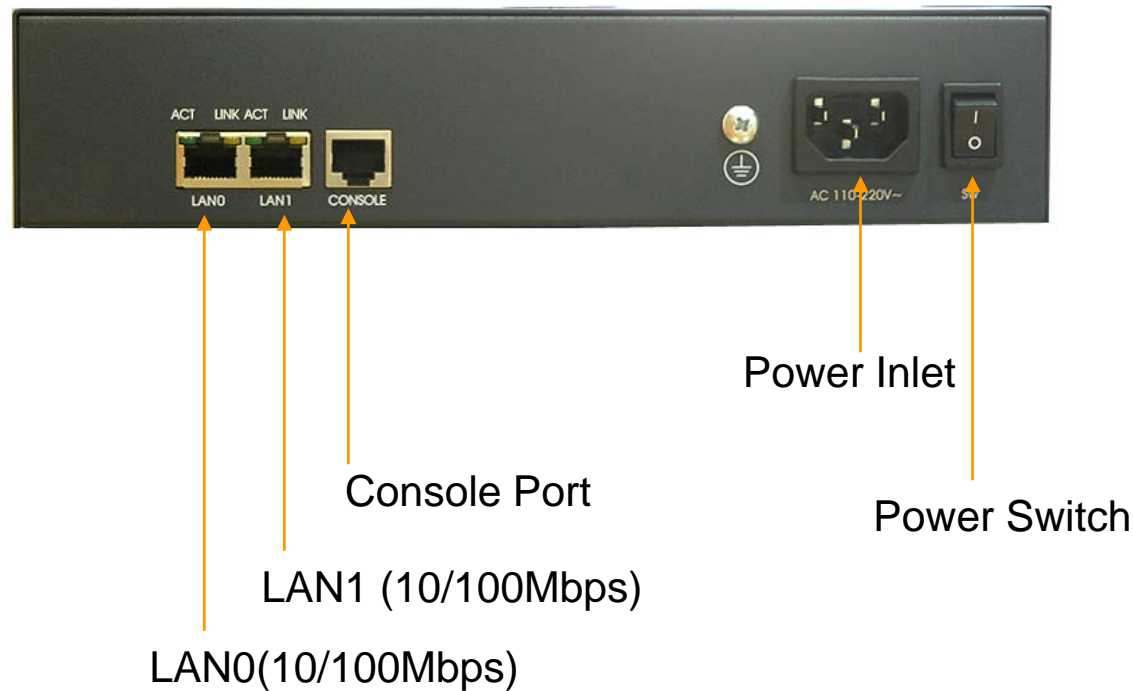


# Hardware Specification

IPNext150 Next Generation IP-PBX

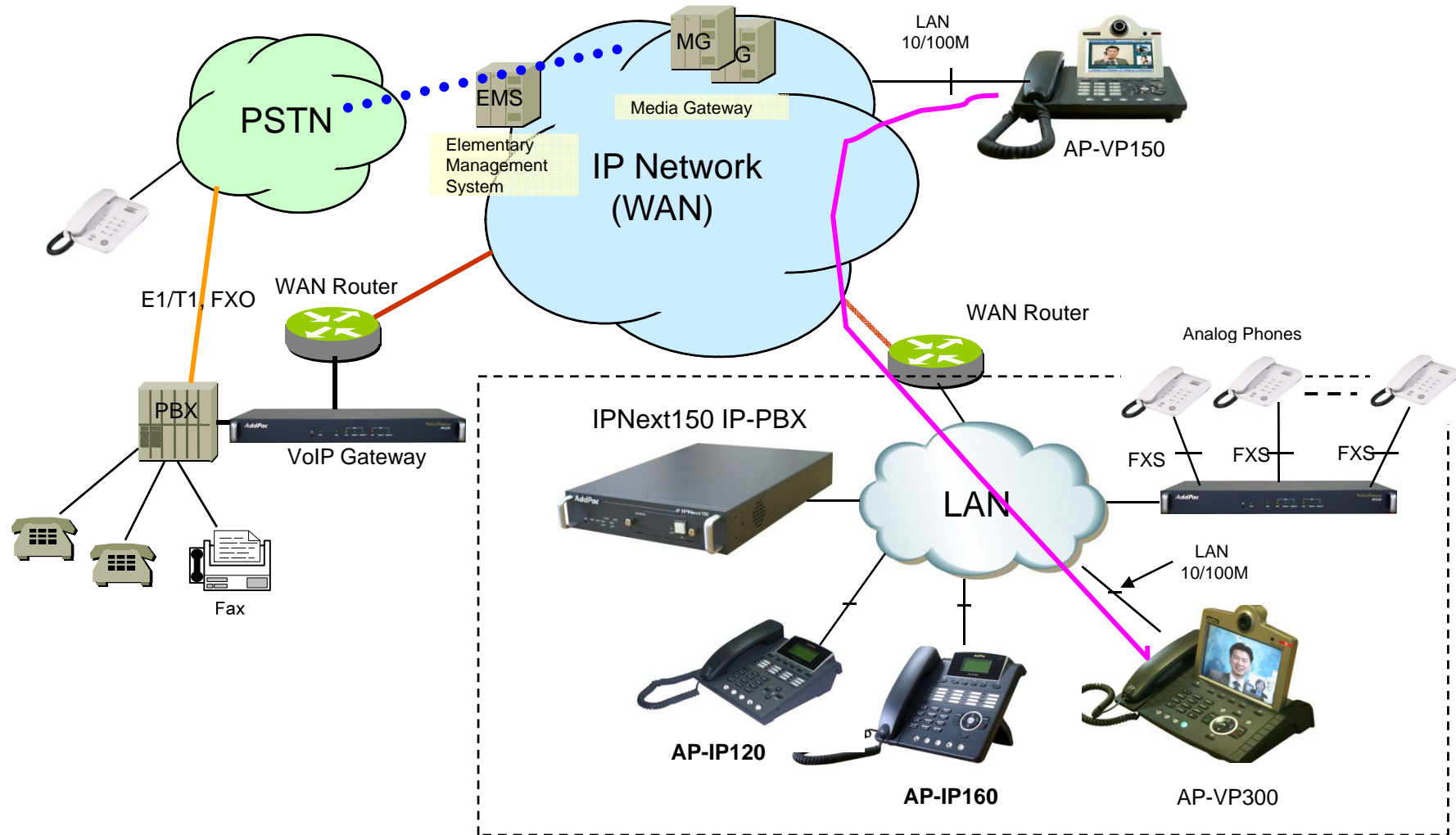


## IPNext150 Rear Side



# Network Diagram

## IPNext150 Next Generation IP-PBX



# IPNext100 SOHO IP-PBX



**AddPac**

[www.addpac.com](http://www.addpac.com)

# Main Features

## IPNext100 IP-PBX for SOHO

- SIP Application Server, Proxy, Registrar and Location Server
- Multiple ITSP Trunk with SIP & H.323 Accounts Support
- High Performance RISC & Programmable DSP Architecture
- Two(2) 10/100Mbps Fast Ethernet (IP Share ,etc)
- One(1) USB Port for USB Memory and Wireless LAN
- Analog VoIP Gateway Interface
- High Performance LAN-to-LAN Routing Capability
- VoIP Gateway : G.711/G.726/G.723/G.729, T.38 Fax , VAD, etc
- Powerful Network Protocols (PPPoE, DHCP, Static Routing, etc)
- IPv4/IPv6 Dual Stack
- RTP Proxy Function Embedded for Private IP and IPv6 Address Interworking
- User Presence Service for Smart Multimedia Messenger and Smart IP Phone
- IVR Scenario Editor, Three Party Conference (G.711)
- Unified Messaging Service (Voice Mail, etc)
- Firmware Upgradeable Architecture
- Smart Multimedia Manager for IP-PBX Management
- Smart Messenger Service for UC
- Advanced Voice QoS Mechanism
- Small, Light and Compact Design
- Power Switch for Stability and Status LEDs

# Hardware Specification

## IPNext100 IP-PBX for SOHO

RISC  
CPU

High-end  
DSP

- RISC Microprocessor Computing Power
- + High End Programmable DSP
- VoIP Gateway Interface
  - IPNext100 Model A: Two(2) FXS Port
  - IPNext100 Model B: Two(2) FXO Port
  - IPNext100 Model C: Two(2) FXS Port + Two(2) FXO Port
  - IPNext100 Model D: Four(4) FXO Port
- Network Interface
  - Two(2) 10/100Mbps Fast Ethernet (RJ45)
- USB Interface
  - One(1) USB Host Mode Interface for USB Memory and Wireless LAN
- Power Supply
  - External Power Adaptor
- Power On/Off Switch
- Power LED, LAN LEDs, Port LEDs

# Hardware Specification

## IPNext100 IP-PBX for SOHO

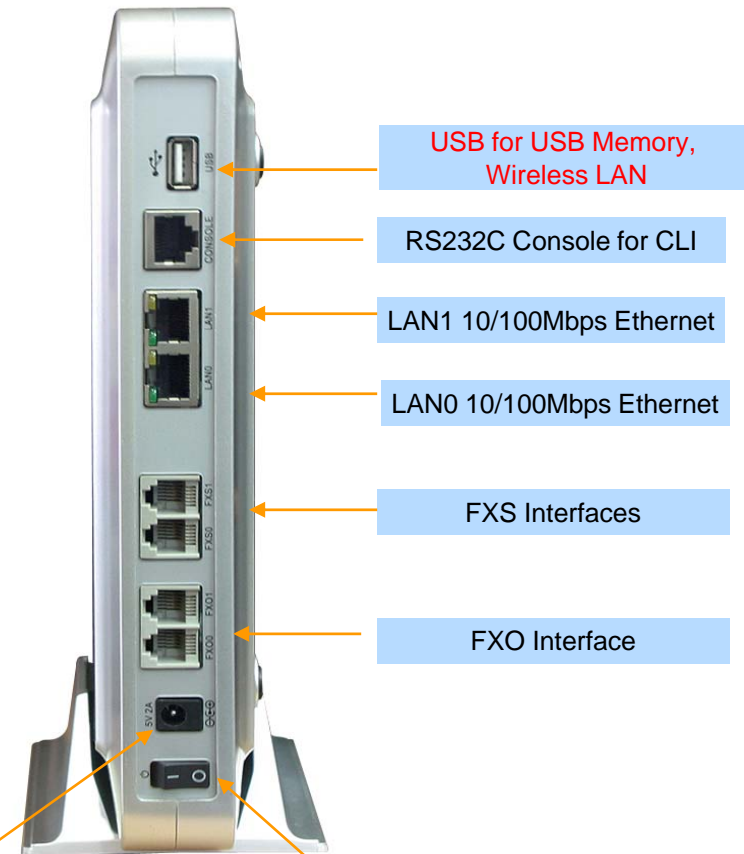
RISC  
CPU

High-end  
DSP

### Hardware Specifications

IPNext100 Series	Basic Specifications
CPU	High End RISC Microprocessor
Voice Interface (Option)	2FXS, 2 FXO, 2FXS 2FXO, 4FXO Voice Interface(RJ-11)
Ethernet Interface	2-Ports 10/100Mbps Ethernet Interface(RJ-45)
Console Interface	1-Port RS232C Interface(RJ-45)
Flash Memory	High-speed Flash Memory for System, Voice Mail, etc
System Main Memory	128Mbyte High-speed SDRAM
USB Interface	USB <b>Host Mode</b> Interface for USB Memory, Wireless LAN, USB Hub.
Power Requirement	External Power Supply Adaptor / VAC 110~220V, 50/60Hz, 5V 3A
Operating Temperature	0°C - 45°C (32 °F - 122°F)
Storage Temperature	-40°C ~ 85°C (-40°C ~ 185°F)
Relative Humidity	5% ~ 95% (Non-condensing)
Dimensions	43 x 265x 165(H x W x D)

### Network interface Configurations



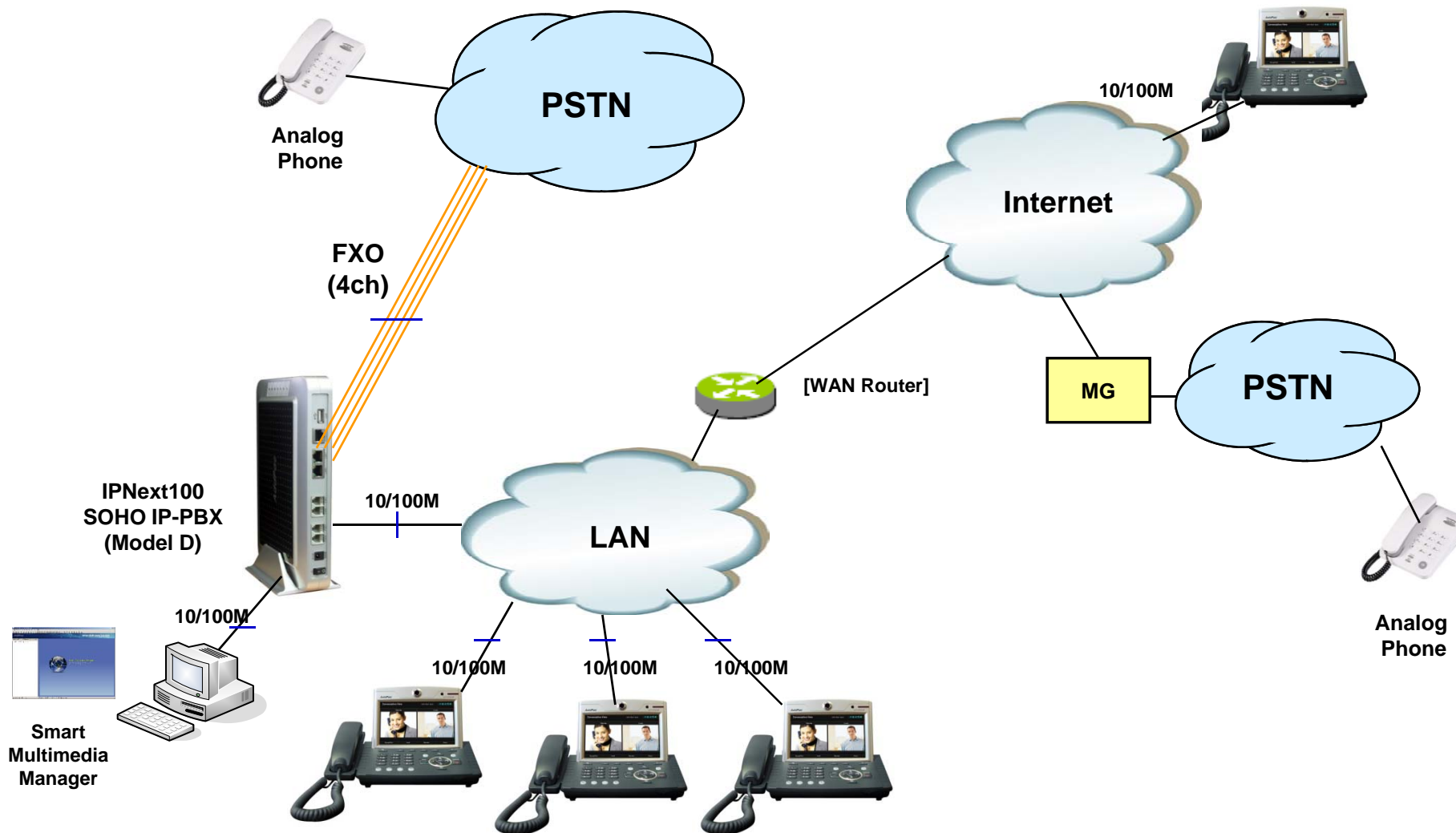
External Power Interface



Power Switch

# Network Diagram

IPNext100 IP-PBX for SOHO (Model D)



# IPNext50 SOHO IP-PBX





# Main Features

## IPNext50 IP-PBX for SOHO

- SIP Application Server, Proxy, Registrar and Location Server
- Multiple ITSP Trunk with SIP & H.323 Accounts Support
- High Performance RISC & Programmable DSP Architecture
- Two(2) 10/100Mbps Fast Ethernet (IP Share ,etc)
- One(1) USB Port for USB Memory and Wireless LAN
- Up to Four(4) PSTN FXO VoIP Interface
- High Performance LAN-to-LAN Routing Capability
- VoIP Gateway : G.711/G.726/G.723/G.729, T.38 Fax , VAD, etc
- Powerful Network Protocols (PPPoE, DHCP, Static Routing, etc)
- IPv4/IPv6 Dual Stack
- RTP Proxy Function Embedded for Private IP and IPv6 Address Interworking
- Presence Service Features for Smart Multimedia Messenger and Smart IP Phone
- IVR Scenario Editor, Voice Mail, Third Party Conference (G.711)
- Firmware Upgradeable Architecture
- Smart Multimedia Manager for IP-PBX Management
- Smart Messenger Service for UC
- VPMS (VoIP Plug&Play Management System) for Large Scale Deployment
- Advanced Voice QoS Mechanism
- Small, Light and Compact Design
- Power Switch for Stability and Status LEDs

# Hardware Specification

## IPNext50 IP-PBX for SOHO

RISC  
CPU

High-end  
DSP

- RISC Computing Power + High End Programmable DSP
- VoIP Gateway Interface
  - IPNext50 Model A: Basic Configuration
  - IPNext50 Model B: Two(2) FXO Port
  - IPNext50 Model C: Four(4) FXO Port
  - IPNext50 Model D: Two(2) FXS & Two(2) FXO Port
  - IPNext50 Model R: Voice Recording Service
- Network Interface
  - Two(2) 10/100Mbps Fast Ethernet (RJ45)
- USB Interface
  - One(1) USB Host Mode Interface for USB Memory and Wireless LAN
- Power Supply
  - External Power Adaptor
- Power On/Off Switch
- Power LED, LAN LEDs, FXO Port LEDs

# Hardware Specification

IPNext50 IP-PBX for SOHO

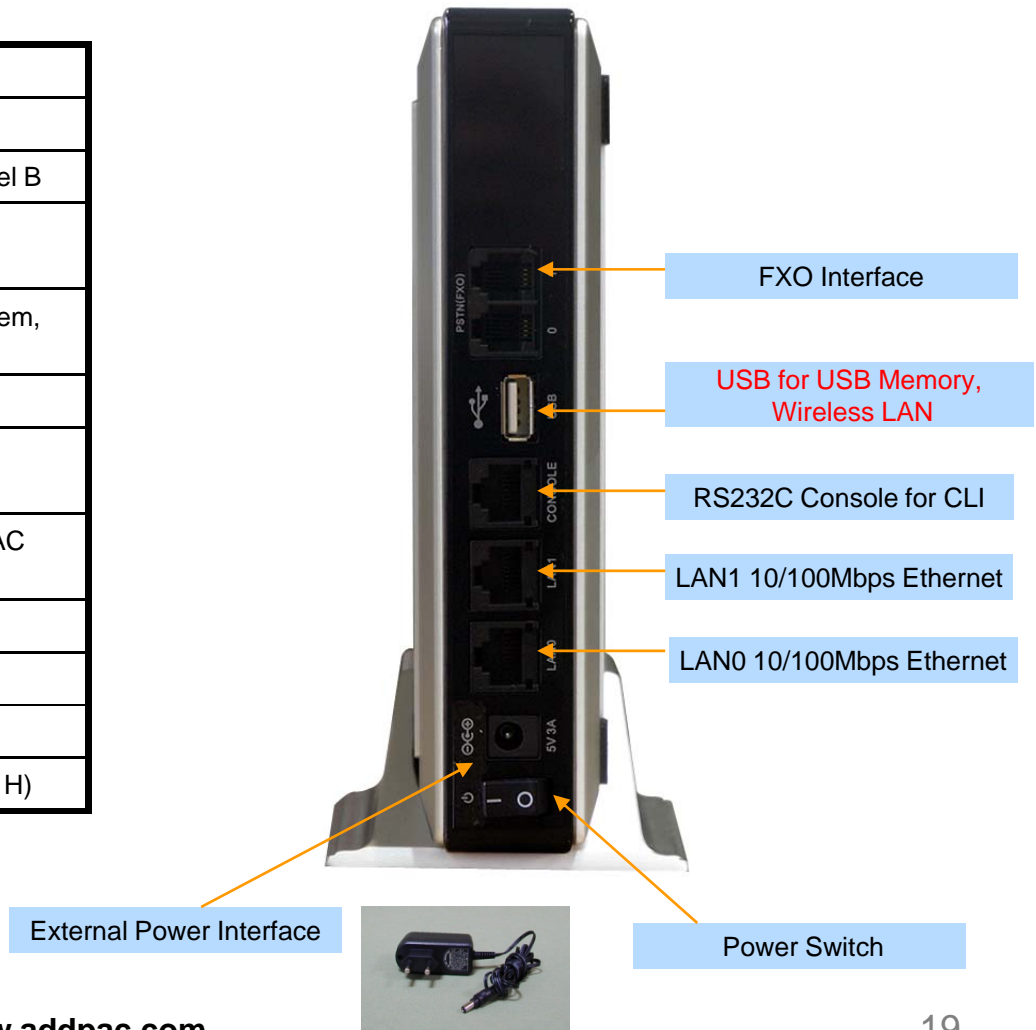
RISC  
CPU

High-end  
DSP

## Hardware Specifications

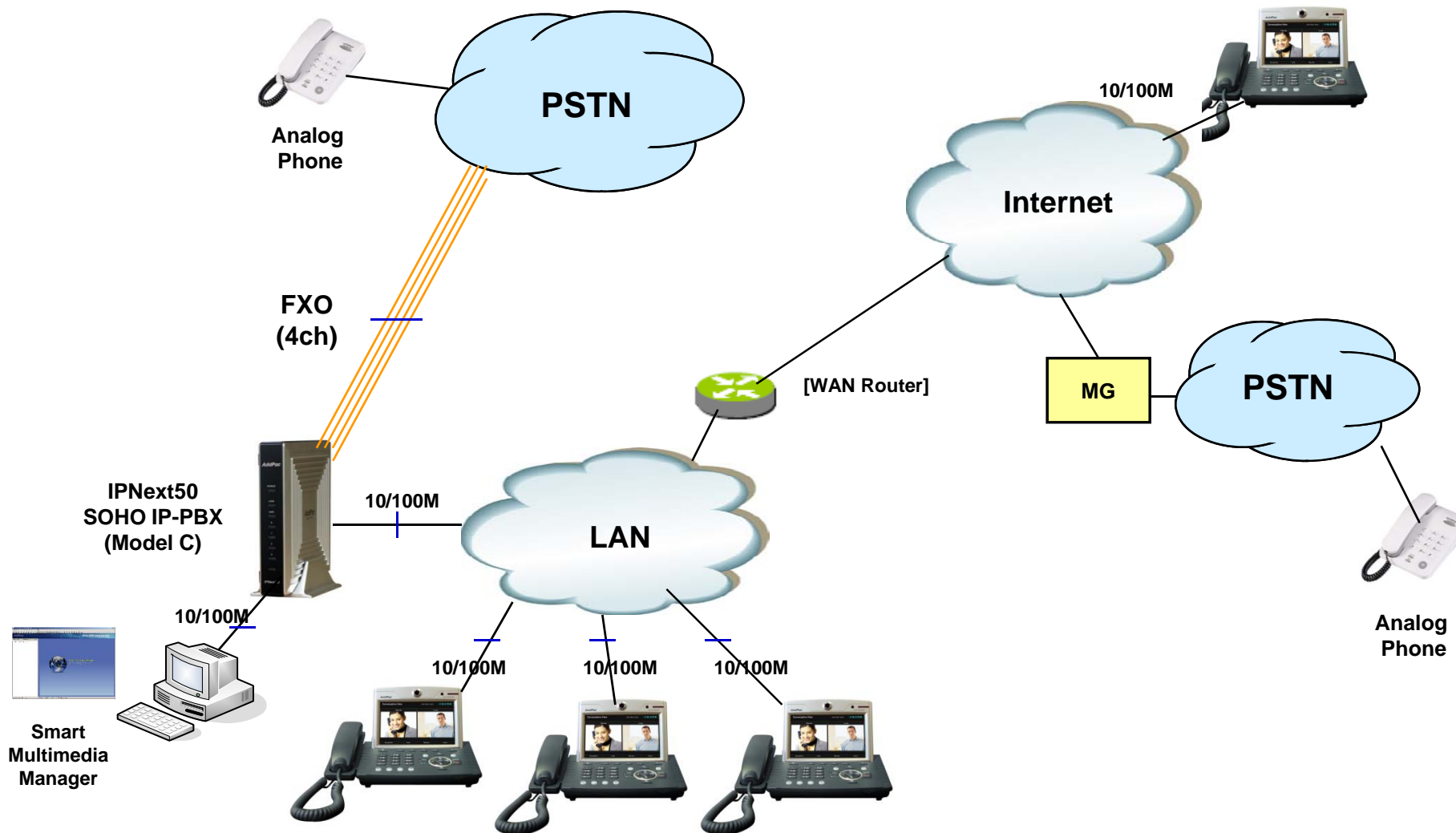
IPNext 50 Series	Basic Specifications
CPU	High End RISC Microprocessor
Voice Interface (Option)	2 FXO Voice Interface(RJ-11) :Model B
Ethernet Interface	2-Ports 10/100Mbps Ethernet Interface(RJ-45)
Flash Memory	High-speed Flash Memory for System, Voice Mail, etc
System Main Memory	128Mbyte High-speed SDRAM
USB Interface	USB Host Mode Interface for USB Memory, Wireless LAN, USB Hub.
Power Requirement	External Power Supply Adaptor / VAC 110~220V, 50/60Hz, 5V 3A
Operating Temperature	0°C ~ 45°C (32 °F ~ 122°F)
Storage Temperature	-40°C ~ 85°C (-40°C ~ 185°F)
Relative Humidity	5% ~ 95% (Non-condensing)
Dimensions	182mm x 182mm x 38mm (W x D x H)

## Network interface Configurations



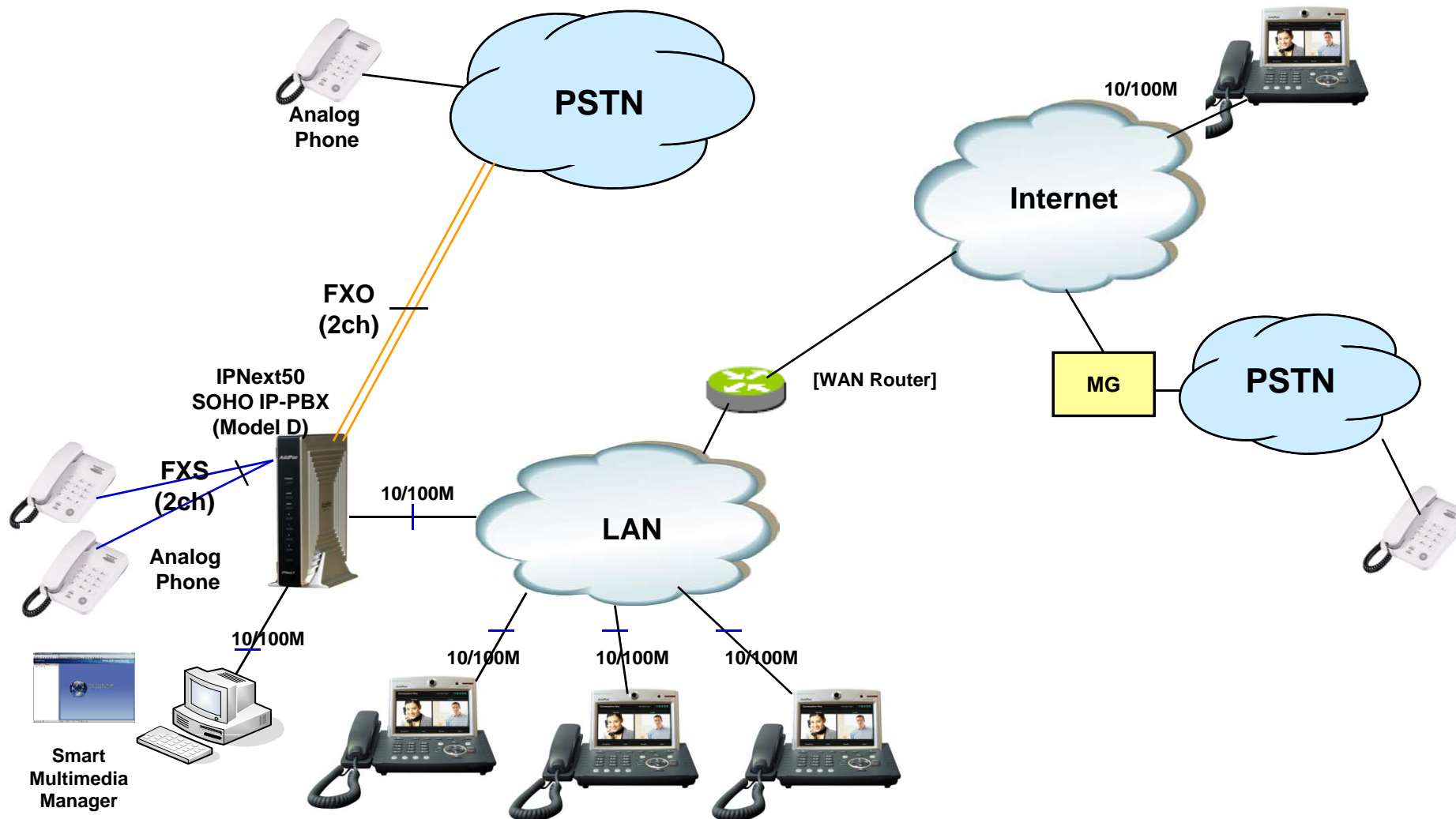
# Network Diagram

IPNext50 IP-PBX for SOHO (Model C)



# Network Diagram

IPNext50 IP-PBX for SOHO (Model D)

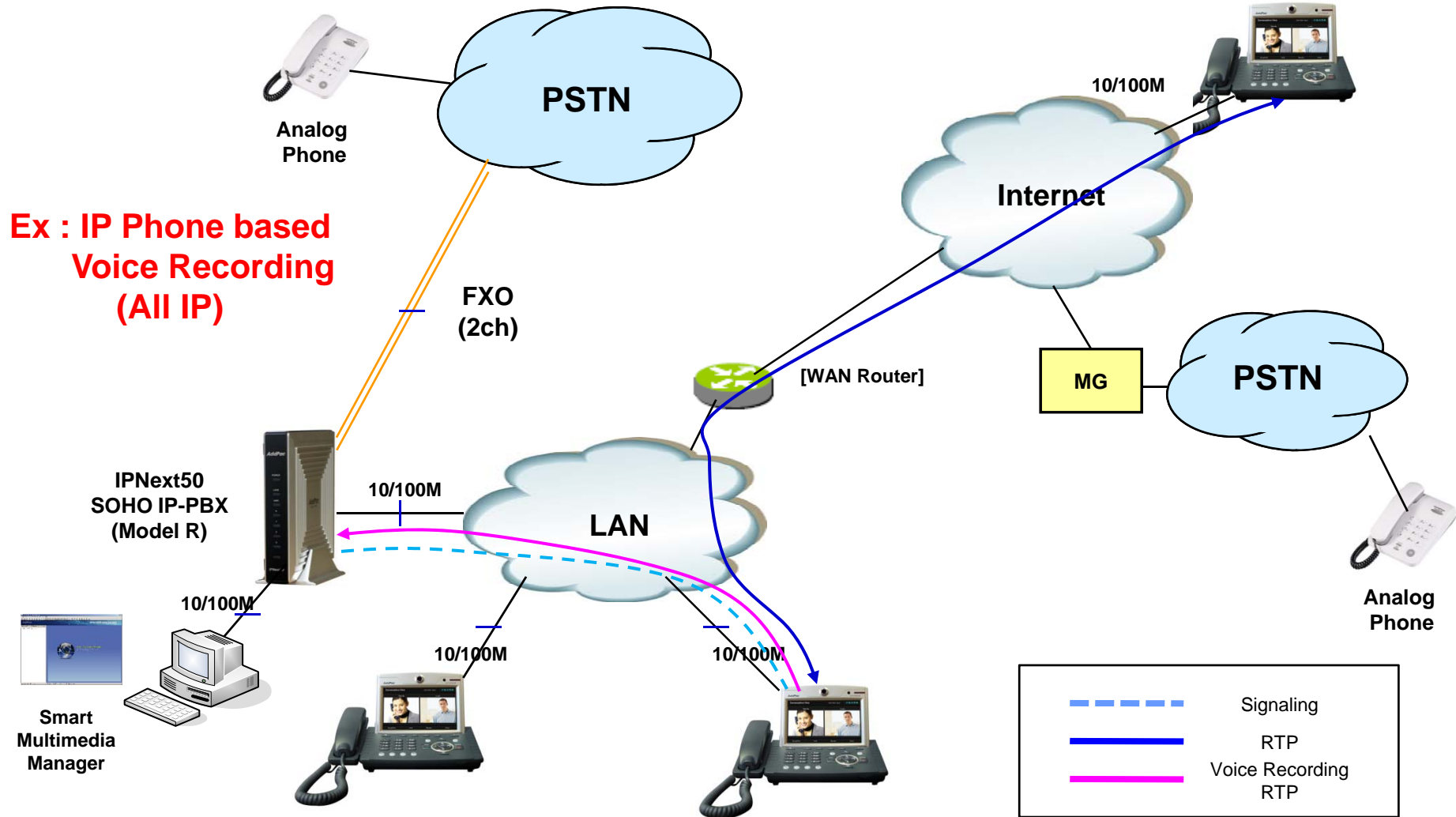


**AddPac**

[www.addpac.com](http://www.addpac.com)

# Network Diagram (ex.) : Voice Recording

IPNext50 IP-PBX for SOHO (Model R)



# IPNext20 SOHO IP-PBX



# Main Features

## IPNext20 IP-PBX for SOHO

- SIP Application Server, Proxy, Registrar and Location Server
- Multiple ITSP Trunk with SIP & H.323 Accounts Support
- High Performance RISC & Programmable DSP Architecture
- Two(2) 10/100Mbps Fast Ethernet (IP Share ,etc)
- Up to Two(2) PSTN FXO VoIP Interface
- High Performance LAN-to-LAN Routing Capability
- VoIP Gateway : G.711/G.726/G.723/G.729, T.38 Fax , VAD, etc
- Powerful Network Protocols (PPPoE, DHCP, Static Routing, etc)
- IPv4/IPv6 Dual Stack
- RTP Proxy Function Embedded for Private IP and IPv6 Address Interworking
- Presence Service Features for Smart Multimedia Messenger and Smart IP Phone
- IVR Scenario Editor, Voice Mail, Third Party Conference (G.711)
- Firmware Upgradeable Architecture
- Smart Multimedia Manager for IP-PBX Management
- Smart Messenger Service for UC
- VPMS (VoIP Plug&Play Management System) for Large Scale Deployment
- Advanced Voice QoS Mechanism
- Small, Light and Compact Design
- Power Switch for Stability and Status LEDs



# Hardware Specification

## IPNext20 IP-PBX for SOHO

RISC  
CPU

High-end  
DSP

- RISC Microprocessor Computing Power
- + High End Programmable DSP
- VoIP Gateway Interface
  - IPNext20 Model A: Basic Configuration
  - IPNext20 Model B: Two(2) FXO Port
  - IPNext20 Model U: USB Interface
  - IPNext20 Model R: Voice Recording Service
- Network Interface
  - Two(2) 10/100Mbps Fast Ethernet (RJ45)
- Power Supply
  - External Power Adaptor
- Power On/Off Switch
- Power LED, LAN LEDs, FXO, FXS Port LEDs

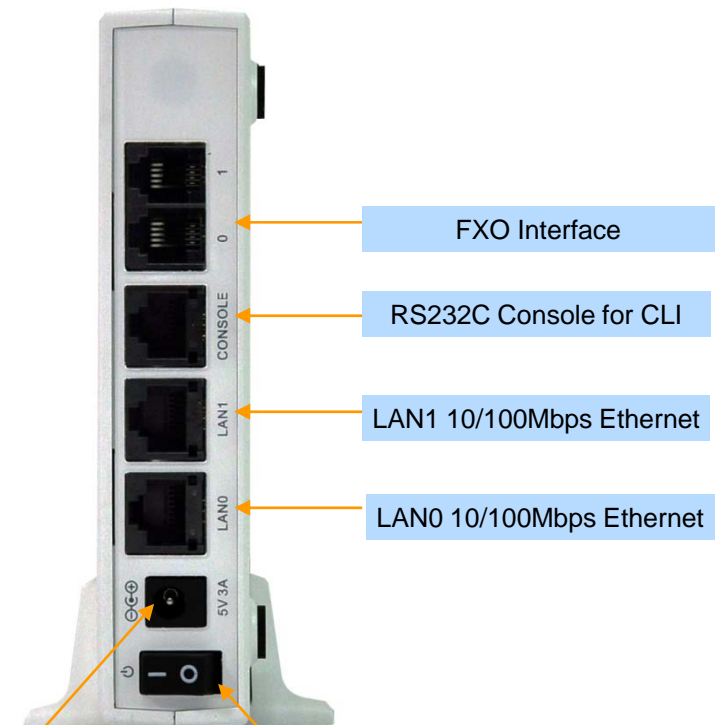
# Hardware Specification

## IPNext20 IP-PBX for SOHO

### Hardware Specifications

IPNext20 Series	Basic Specifications
<b>CPU</b>	High End RISC Microprocessor + Voice DSP Processor
<b>Voice Interface (PSTN)</b>	None :Model A
	2 FXO Voice Interface(RJ-11) :Model B
	2 FXS Voice Interface(RJ-11) :Model C
<b>Ethernet Interface</b>	2-Ports 10/100Mbps Ethernet Interface(RJ-45)
<b>Flash Memory</b>	High-speed Flash Memory for System, Voice Mail, etc
<b>System Main Memory</b>	128Mbyte High-speed SDRAM
<b>Power Requirement</b>	External Power Supply Adaptor / VAC 110~220V, 50/60Hz, 5V 2A
<b>Operating Temperature</b>	0°C ~ 45°C (32 °F ~ 122°F)
<b>Storage Temperature</b>	-40°C ~ 85°C (-40°C ~ 185°F)
<b>Relative Humidity</b>	5% ~ 95% (Non-condensing)
<b>Dimension</b>	142mm x 142mm x 28mm (H x W x D )
<b>Weight</b>	0.42kg

### Network interface Configurations



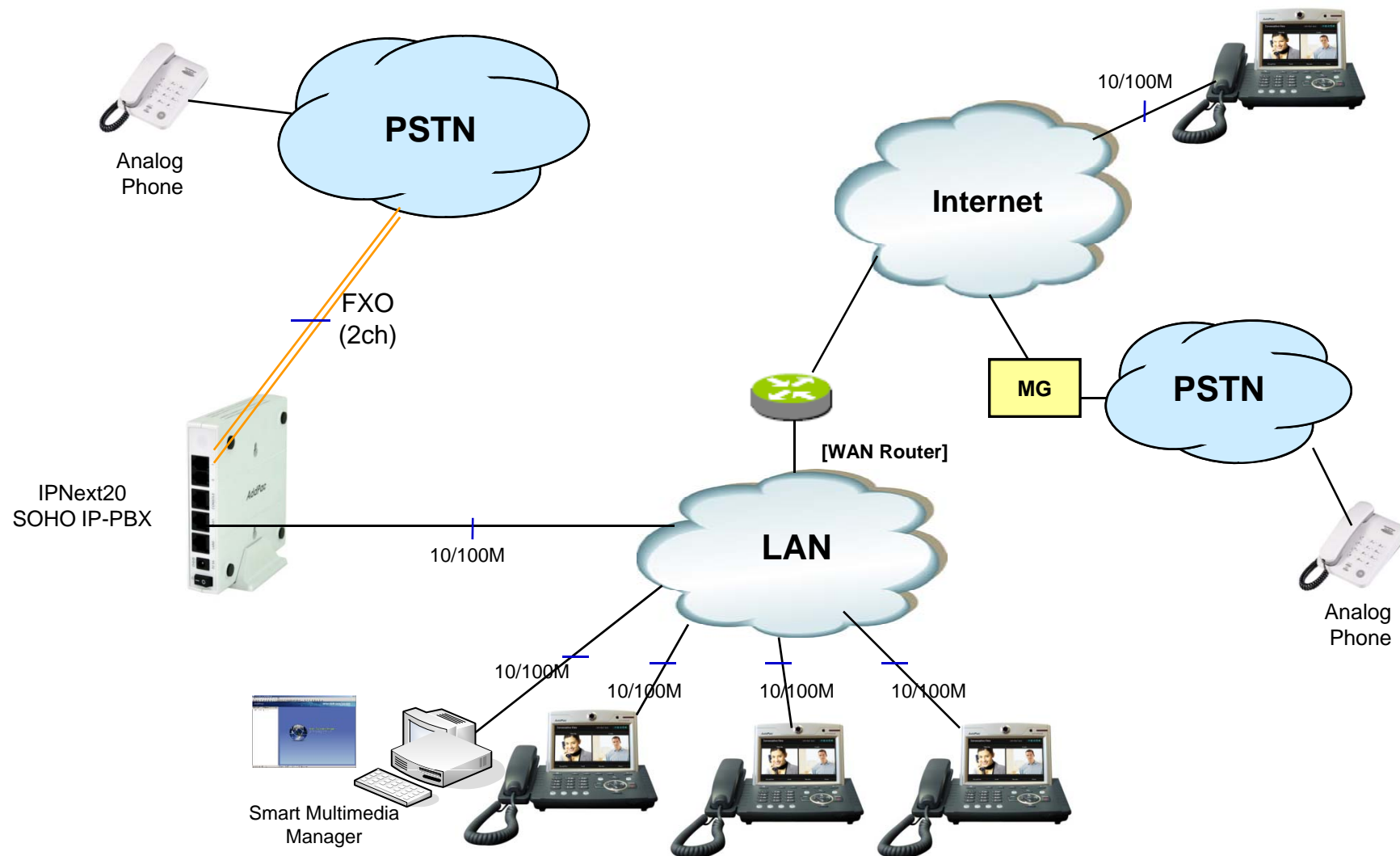
External Power Interface



Power Switch

# Network Diagram

## IPNext20 IP-PBX for SOHO





# AddPac IP Terminals

# AddPac IP Terminals

- AP-VP500 Video Phone
- AP-VP350 MCU Video Phone
- AP-VP300 Video Phone
- AP-VP280 Video Phone
- AP-VP250 Video Phone
- AP-VP230 Video Phone
- AP-VP150 Video Phone
- AP-VP120 Video Phone
- AP-IP300 IP Phone
- AP-IP250 IP Phone
- AP-IP230 IP Phone
- AP-IP160 IP Phone
- AP-IP120 IP Phone
- AP-IP90 IP Phone
- AP-WP100 Wi-Fi Phone
- AP-SMP100 Soft Phone



AP-VP500



AP-VP300



AP-VP150



AP-WP100



AP-VP120



AP-IP300



AP-IP230



AP-IP160



AP-IP120

# Smart Communicator

## AP-SMP100 Soft Phone (Video/Voice)

- MS-Window based Soft-Phone
- Smart Multimedia (Video/Voice) Soft-Phone
- IP Real-time Audio/Video Broadcasting Terminal Solution
- Built-In Smart Messenger Function
- Up to 30fps with VGA-Resolution(MPEG-4)
- Video Conference Call Support (AddPac External MCU Inter-working)
- Advanced Voice/Video Traffic QoS
- SIP, H.323\* Signaling Support
- Support Various Call Signal via AddPac IP-PBX Inter-working

# Smart Messenger

- MS-Window based Application
- Support Messenger Service
- Support Various Address Book
- Support User Presence Information
- Support User Search Feature
- Interoperation with Address Book and Smart Phone
- Support Smart Phone Control and Setup
  - Call Control and Forward Setup
- Support Unified Message Box
  - Voice Mail Box
  - Short Message Box



AP-VP300



AP-VP280



IPNext20  
IP-PBX



AddPac Smart Messenger

# Smart Window(1/2)

Smart Window is simple web based personal information management program for IP-PBX, Call Manager, etc.

## Service Features

- User Information
  - Personal information configuration
- Alarm
  - Alarm event configuration
- User Search
  - User search using search keyword
- Call Forwarding
  - Call forwarding configuration
- Speed Dial
  - Speed dial configuration
- Conference\*
  - Configuration of audio, video multiparty conference



# Smart Window (2/2)

Main Layout of Smart Window consists of Menu, Contents, Help Message, etc.

The screenshot shows the Smart Window interface in a browser window. The interface is divided into several sections:

- Main Menu:** A sidebar on the left containing two main categories: "Service" and "Personal Information". Under "Service", there are links for "Call Transfer", "User Search", "Speed Dial", and "Alarm". Under "Personal Information", there is a link for "User Information".
- Main Layout:** The central content area titled "User Search". It features a search form with "Search Type" (set to "User ID") and "Search Word" (set to "0"). Below the form is a table of user information.
- Help Message:** A "Description" box on the right side of the search results, explaining that the search function finds user information registered in the system, which can be searched by ID, name, or phone number.

[ User Name ]	[ User ID ]	[ E-mail ]	[ Phone Number ]
대연석	1001	yslee@addpac.com	1001
권익한	1000	khwon@addpac.com	123456789
서연호	1003	shseo@addpac.com	1003
홍광동	4000	dghond@addpac.com	4000
김민규	1002	mkim@addpac.com	1002
김희구	1005	ghjeog@addpac.com	1005
오한석	1004	ohsa@addpac.com	1004
권영환	1007	pkwon@addpac.com	
김성태	1006	smkim@addpac.com	1006
전혁동	1009	bdseong@addpac.com	

Main Menu









Main Layout

Help Message



# IP Video Phones for IPNext SOHO


# IP Video Phones for IPNext SOHO

	AP-VP500	AP-VP350	AP-VP300N	AP-VP280	AP-VP250	AP-VP230	AP-VP150	AP-VP120
								
LCD Size	12.1 Inch Touch Screen	7Inch Touch Screen	7Inch Touch Screen	7Inch Touch Screen	4.3Inch Touch Screen	5Inch Touch Screen	4.3Inch Touch Screen	4.3Inch
Camera	CCD	CCD	CCD	CMOS	CMOS	CMOS	CCD	CMOS
Video Codec	H.263 MPEG4 H.264	H.263 MPEG4 H.264	H.263 MPEG4 H.264	H.263 MPEG4 H.264	H.263 MPEG4 H.264	H.263 MPEG4 H.264	H.263 MPEG4 H.264	H.263 MPEG4 H.264
Signaling	H.323/SIP	H.323/SIP	H.323/SIP	H.323/SIP	H.323/SIP	H.323/SIP	H.323/SIP	H.323/SIP
Video MCU	N/A	4-Party Video MCU	N/A	N/A	N/A	N/A	N/A	N/A
Voice MCU	3-Party	3-Party	3-Party	3-Party	3-Party	3-Party	3-Party	3-Party
LAN Port	2	2	2	2	2	2	2	2
PoE	N/A	N/A	Support	Support	Support	Support	Support	Support



# IP Phones for IPNext SOHO

# IP Phones for IPNext SOHO

	AP-IP300	AP-IP250	AP-IP230	AP-IP160	AP-IP120	AP-IP90
						
LCD Size	4.3 Inch Color LCD	4.3 Inch Color LCD	5 Inch Color LCD	4 Text Line Graphic LCD	4 Text Line Graphic LCD	4 Text Line Graphic LCD
Touch Screen	N/A	Support	Support	N/A	N/A	N/A
Speed-Dial Keys	25 Key with Presence LED	Touch Screen based 25 Keys	Touch Screen based 25 Keys	16 Key with Presence LED	12 Key with Presence LED	N/A
Voice Codec	G.711/G.726/G.729/G.723	G.711/G.726/G.729/G.723	G.711/G.726/G.729/G.723	G.711/G.726/G.729/G.723	G.711/G.726/G.729/G.723	G.711/G.726/G.729/G.723
Signaling	H.323/SIP	H.323/SIP	H.323/SIP	H.323/SIP	H.323/SIP	H.323/SIP
3-Party Conversation	Support	Support	Support	Support	Support	Support
LAN Port	2	2	2	2	2	2
PoE(Optional)	Support	Support	Support	Support	Support	Support
FXO(Optional)	Support	Support	Support	Support	Support	Support



# Thank you!

**AddPac Technology Co., Ltd.**  
Sales and Marketing

Phone +82.2.568.3848 (KOREA)

FAX +82.2.568.3847 (KOREA)

E-mail : [sales@addpac.com](mailto:sales@addpac.com)