

Streaming Service Modules for AP-SDS2000, AP-SDS3000, AP-SDS5000



AddPac

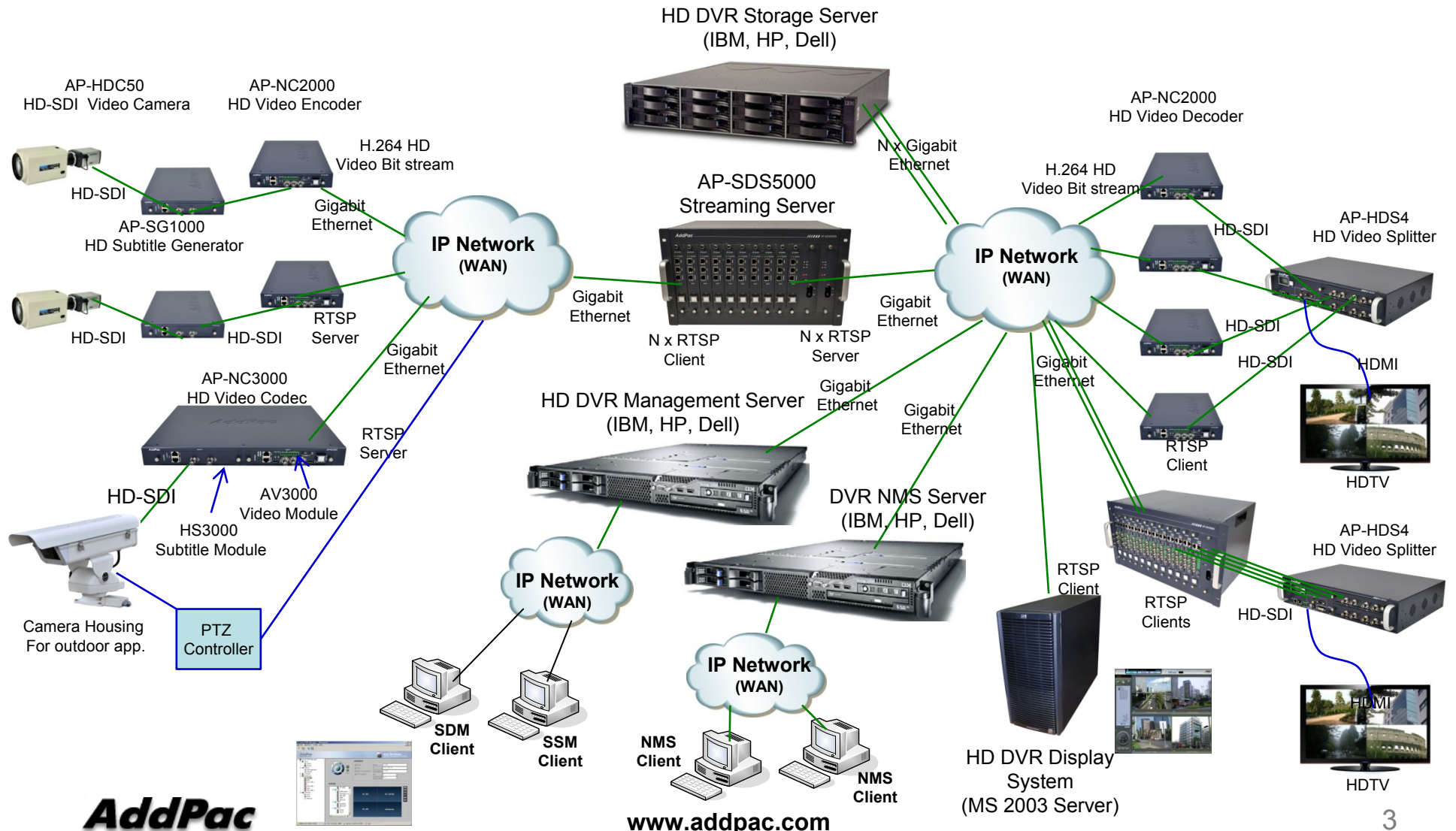
AddPac Technology

2010, Sales and Marketing

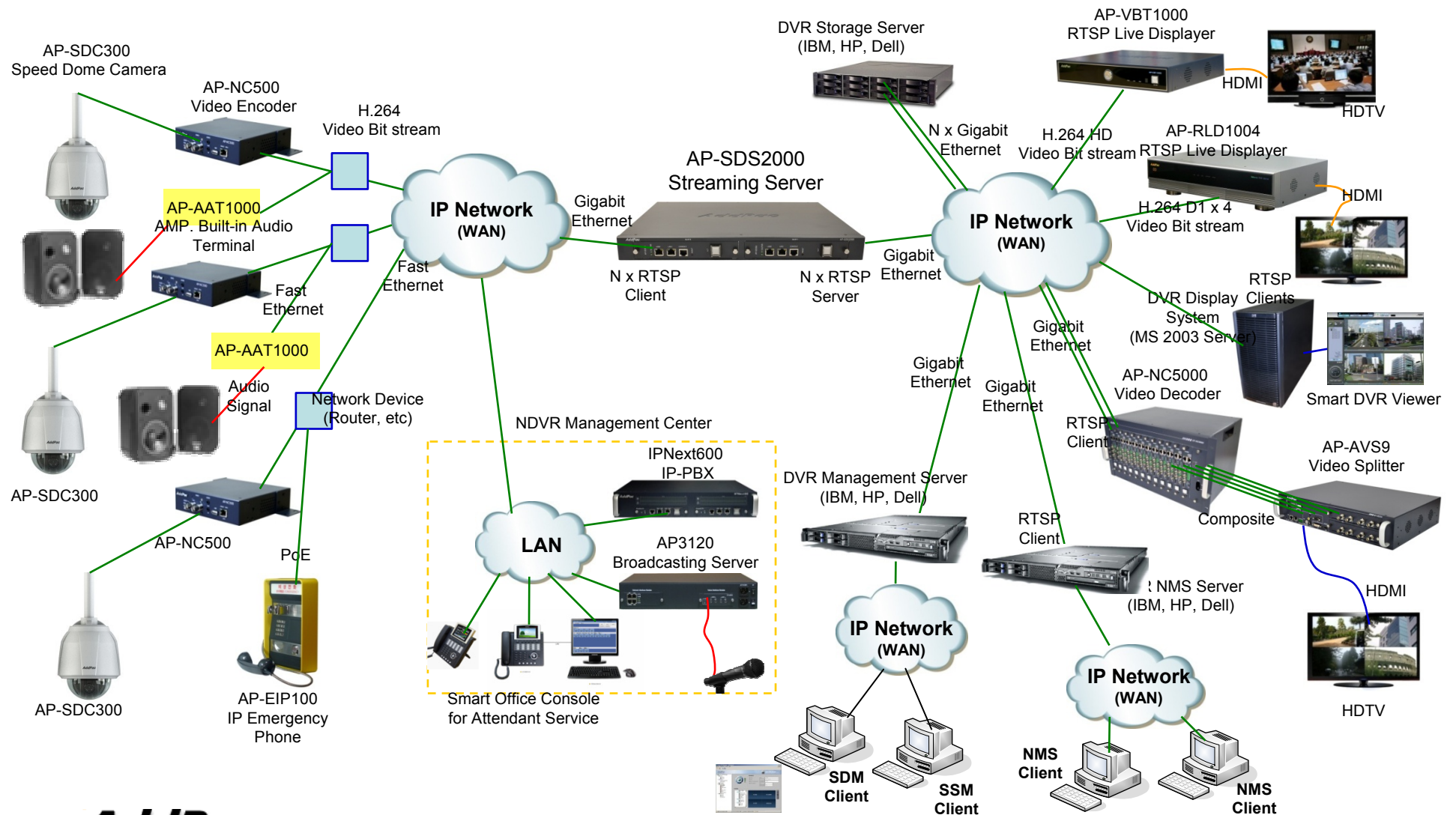
Contents


- AddPac HD Network DVR Service Diagram
- AddPac D1 Network DVR Service Diagram
- AP-SDS2000, AP-SDS3000, AP-SDS5000 H/W Platform
- Streaming Service Modules for AP-SDS2000, AP-SDS3000, AP-SDS3000
 - AP-SDSM-V1 Smart DVR Streaming Service Module
 - AP-SDSM-V2 Smart DVR Streaming Service Module*
- Smart DVR Manager for System Management

HD Network DVR Service Diagram





D1 Network DVR Service Diagram





AP-SDS2000, AP-SDS3000,
AP-SDS5000 H/W Platform

AP-SDS2000, AP-SDS3000, AP-SDS5000 H/W Platform

	AP-SDS2000	AP-SDS3000	AP-SDS5000
Model			
Module Slot	2 Module Slot	4 Module Slots	10 Module Slots
Power Supply	Internal Power Module (AC)	Internal Power Module (AC)	Module based Dual Power Supply
Power Type	Built-In	Built-In	Module Type

Streaming Service Modules

High-end
RISC

AP-SDSM-V1 Smart DVR Streaming Service
Module
(HD, D1, CIF, etc)



AP-SDSM-V1 Streaming Service Module

High-end
RISC

Main Features

- RTSP based Full HD/HD/D1 Streaming Service
- High Performance RISC Computing Power
- Embedded H/W and Real-time OS
- Fault Tolerant and Reliability Service
- RTSP Server & Client Architecture
- HD Video Encoder, HD Video Decoder, HD Storage Server, HD Display Server RTSP based Interworking
- Maximum 20 Channel HD Video Bit-Stream TCP Input(at 4Mbps)
- Maximum 40 Channel HD Video Bit-Stream TCP Output(at 4Mbps)
- VRRP, Active & Standby Redundancy Support
- Server Function for Web based Smart DVR Manager
- HD Video Solution with Outstanding Network Service Capability

AP-SDS2000 Streaming Server

High-end
RISC

Hardware Specification

- High-end Programmable RISC Hardware Architecture
- Two(2) Module Slots for HD Streaming Service
- Smart DVR Streaming Service Module (AP-N1-SDSM)
 - Network Interface
 - Two(2) 10/100/1000Mbps Gigabit Ethernet
 - One(1) Console Port



AP-SDS5000 Streaming Server

High-end
RISC

Hardware Specification

- High-end Programmable RISC Hardware Architecture
- Ten(10) Module Slots for HD Streaming Service
- Smart DVR Streaming Service Module (AP-N1-SDSM)
 - Network Interface
 - Two(2) 10/100/1000Mbps Gigabit Ethernet
 - One(1) Console Port



AddPac

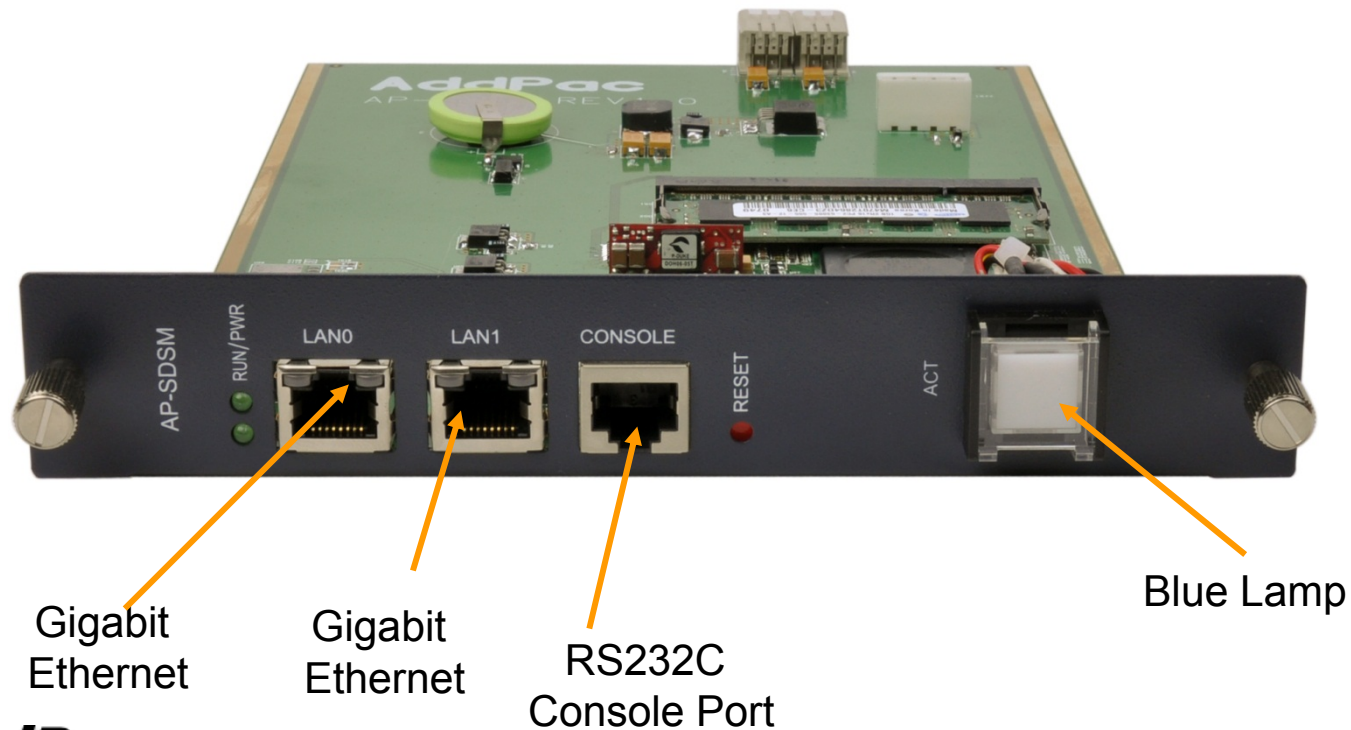
www.addpac.com

AP-SDSM-V1 Streaming Service Module

High-end
RISC

Hardware Module Specification

AP-SDSM-V1 Streaming Service Module

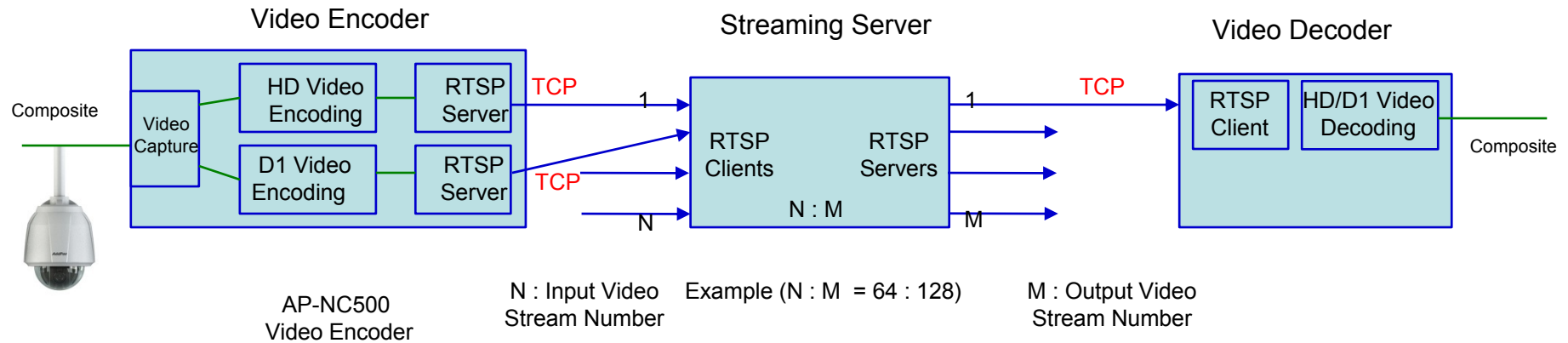


AddPac


www.addpac.com

AP-SDSM-V1 Streaming Service Module

Streaming Service Performance Matrix

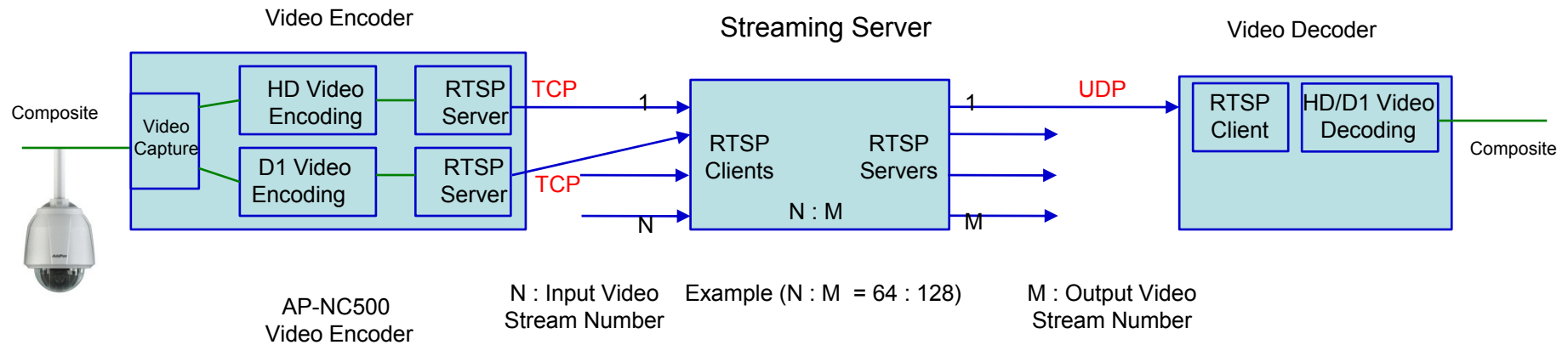


Streaming Service Performance Matrix


 Streaming Service Performance				
Image Size	D1	D1	HD	HD
Bandwidth	1M	2M	4M	8M
TCP Input Ch/ TCP Output Ch	80/160	40/80	20/40	10/20

AP-SDSM-V1 Streaming Service Module

Streaming Service Performance Matrix

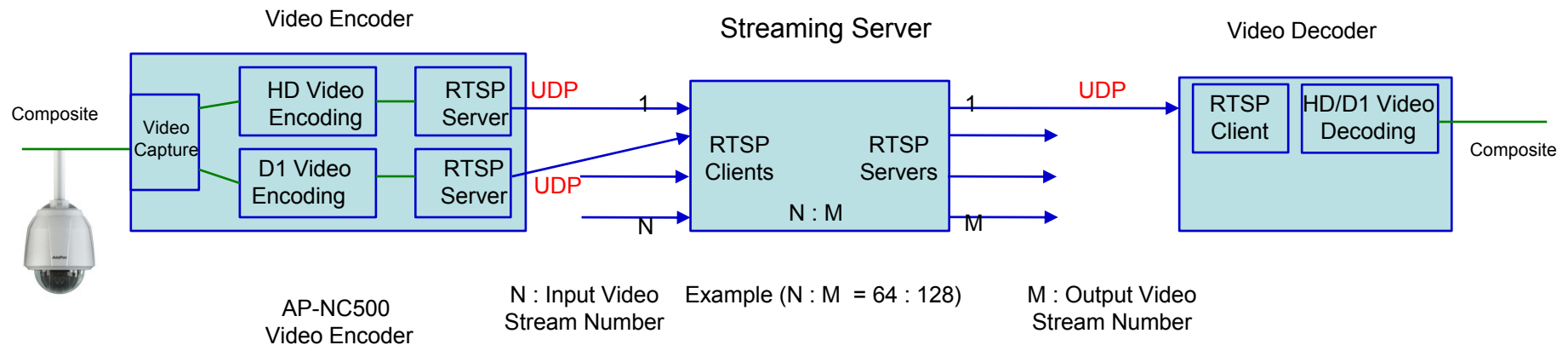


Streaming Service Performance Matrix


	Streaming Service Performance			
	D1	D1	HD	HD
Image Size	D1	D1	HD	HD
Bandwidth	1M	2M	4M	8M
TCP Input Ch/ UDP Output Ch	110/220	60/110	27/54	14/28

AP-SDSM-V1 Streaming Service Module

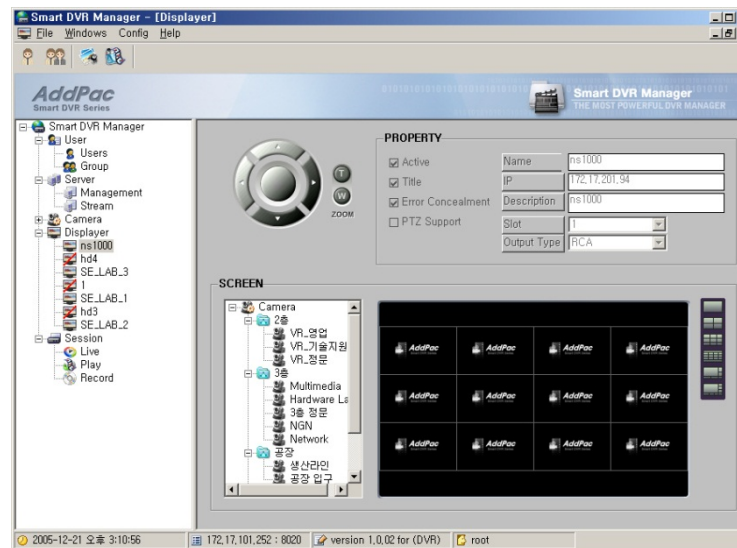
Streaming Service Performance Matrix



Streaming Service Performance Matrix

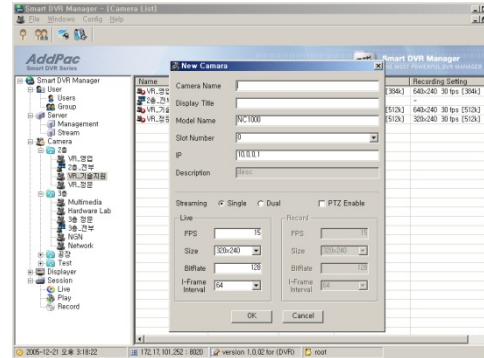
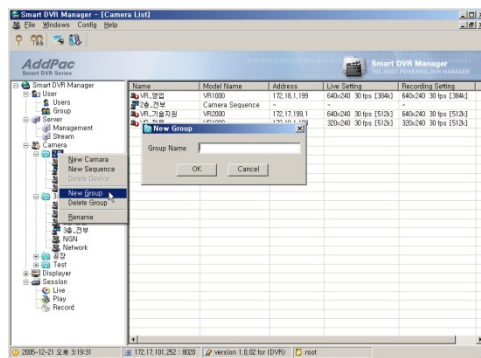
 Streaming Service Performance				
Image Size	D1	D1	HD	HD
Bandwidth	1M	2M	4M	8M
UDP Input Ch/ UDP Output Ch	125/250	62/124	32/64	16/32

Smart DVR Manager for System Management



Smart DVR Manager

- Window based Smart DVR Management Software
- RTSP based Streaming Server Management
- User & Group Management
- Recording and Management Server Management
- IP based Video Encoder (Network Camera) Management
- RTSP Client Management (Video Decoder, Live Displayer, Recording Server, etc)
- Session Management





Thank you!

AddPac Technology Co., Ltd.
Sales and Marketing

Phone +82.2.568.3848 (KOREA)

FAX +82.2.568.3847 (KOREA)

E-mail sales@addpac.com