



# AP-RS3000™

## RTP Proxy Server

High Performance RTP Proxy Server Solution

RTP Proxy Server for Private IP Problem Solving



**AddPac**

**AddPac Technology**

2009, Sales and Marketing

[www.addpac.com](http://www.addpac.com)

# Contents

- Product Overview
- Hardware Specification
- RTP Proxy Configuration
  - Public/Private RTP proxy
  - Asymmetric/Symmetric NAT
  - RTP Broadcast
  - RTP Conference
  - IPv4/IPv6 RTP Proxy
- Signal Flow Diagram
- Ordering Information

# Product Overview

## AP-RS3000 RTP Proxy Server

- Protocol Independence (H.323, SIP, MGCP)
- Support RTP Proxy without NAT
- Support Symmetric / Asymmetric NAT
- Support IPv4/IPv6 RTP Proxy
- Support RTP Broadcast
- Support RTP Conference
- High Performance
- Firmware Upgradeable Architecture

# Hardware Specification

AP-RS3000 RTP Proxy Server

64bit  
CPU

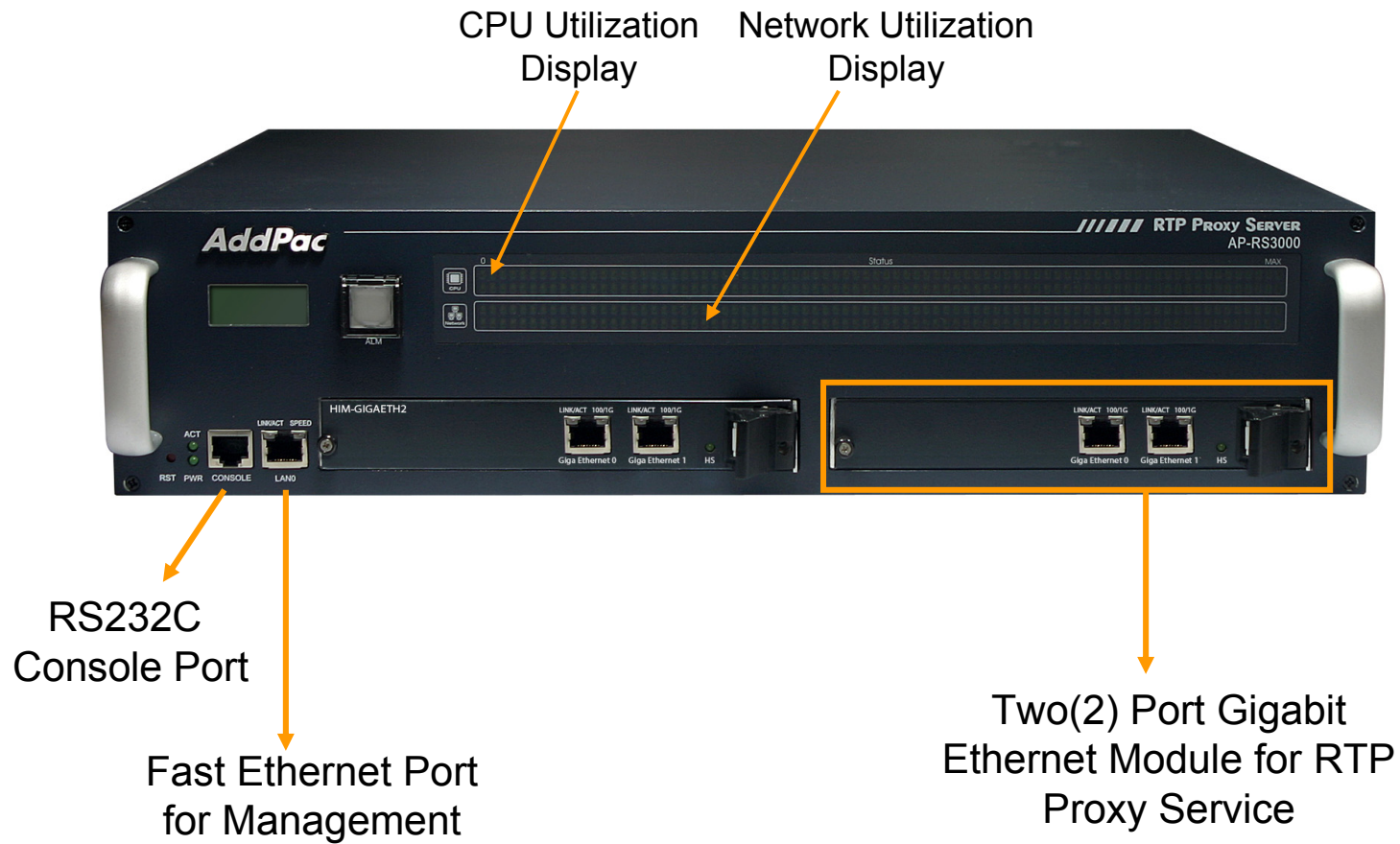
- **RISC Microprocessor Computing Power**
- **Network Interface for Management**
  - One(1)10/100Mbps Fast Ethernet
  - One(1) RS-232C Console
- **Network Interface for RTP Proxy**
  - Two(2) Gigabit Ethernet Module (Hot-Swap)
  - Two(2) Port Gigabit Ethernet Interface/Module
- **Memory Interface**
  - Flash Memory : 8Mbyte
  - Main Memory : 128Mbyte High Speed DDR
  - Boot Loader : 512K Flash Memory

# Hardware Specification

AP-RS3000 RTP Proxy Server

64bit  
CPU

## AP-RS3000 Front Side



# Hardware Specification

AP-RS3000 RTP Proxy Server

64bit  
CPU

## AP-RS3000 Back Side

Dual Power Supply  
Modules  
(Hot-Swap)



PSU Module A

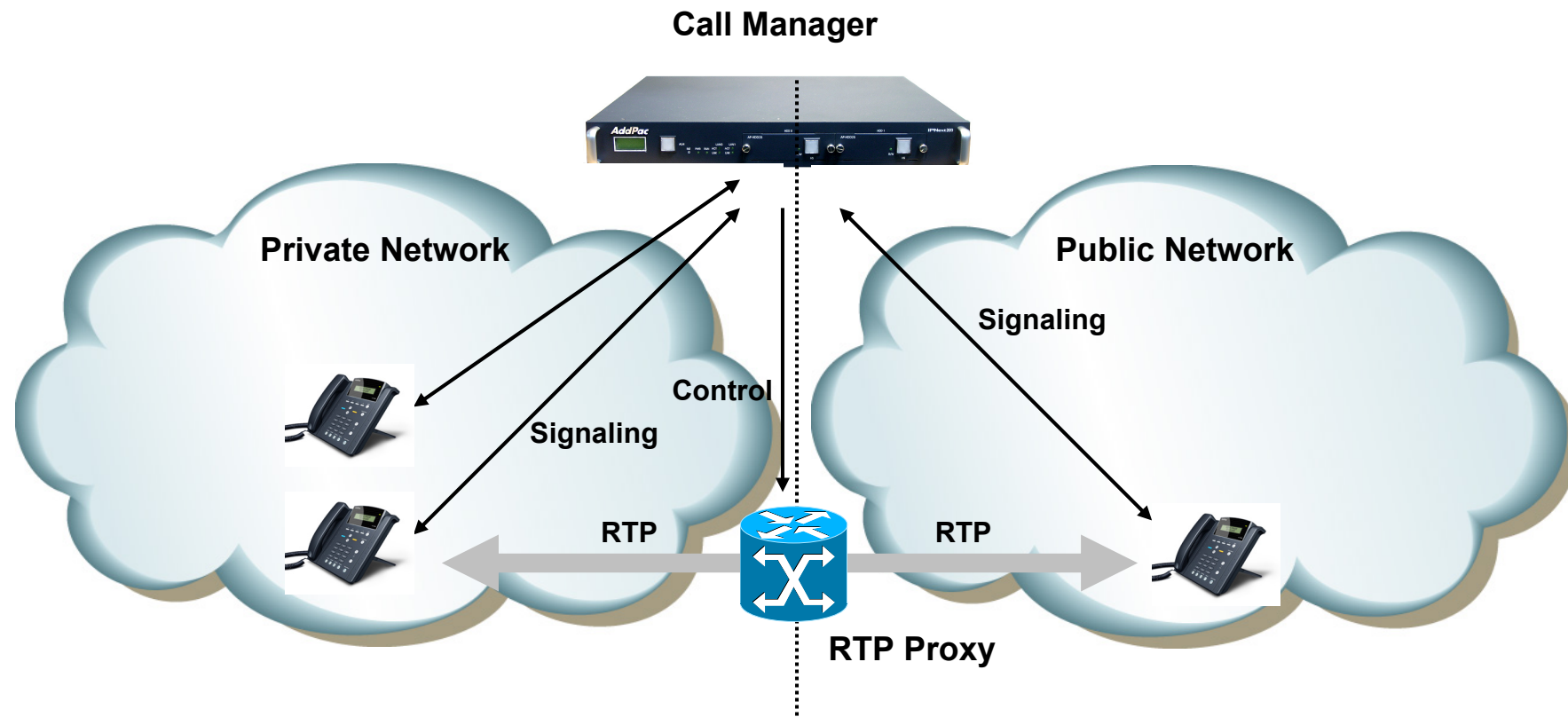
PSU Module B

Power On/Off Switch  
for System



# RTP Proxy Configuration

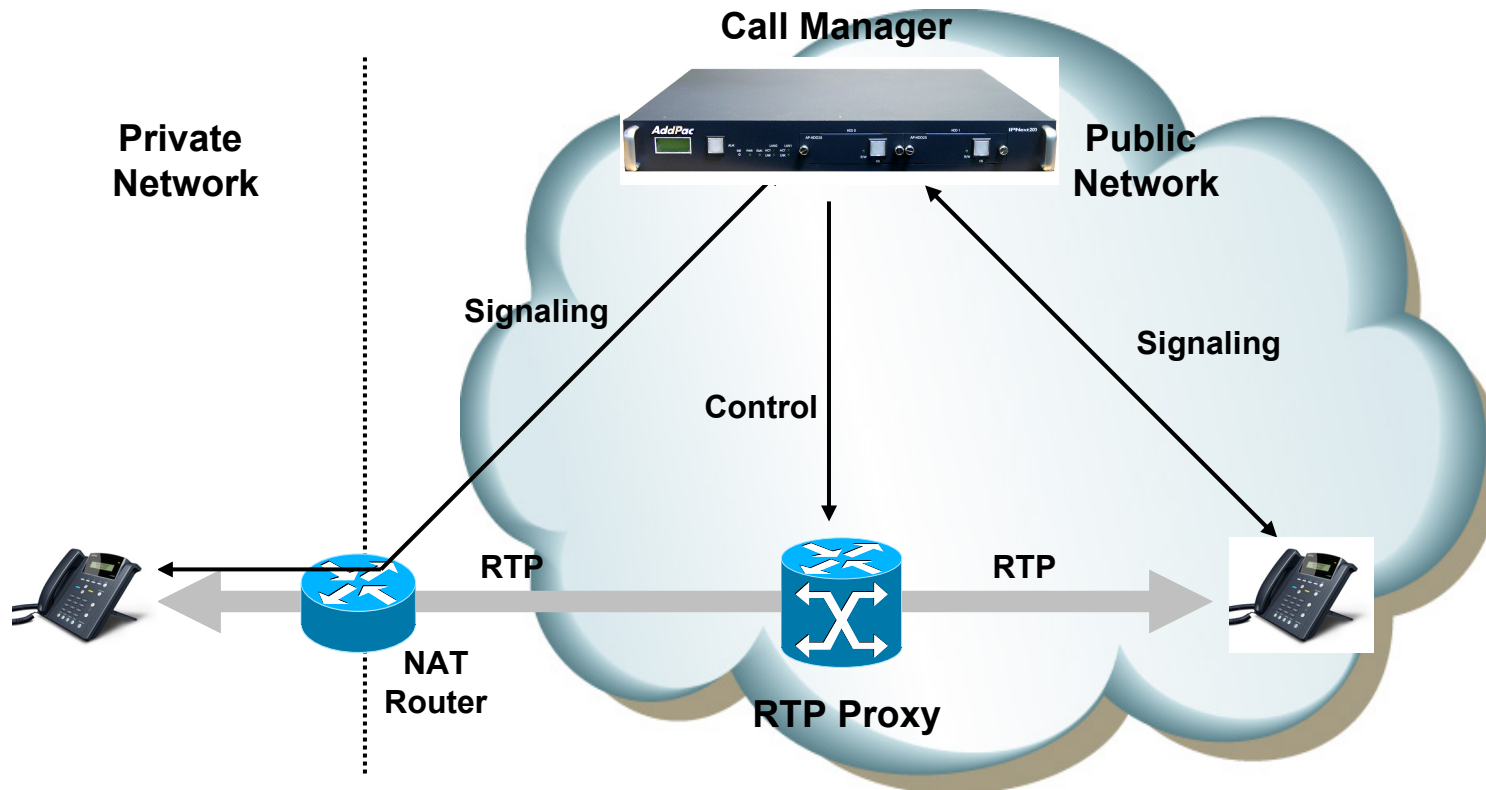
# Public/Private RTP Proxy without NAT Router



- Located between public and private network
- Call manager and RTP proxy has public and private address
- Call manager determine that the call is internal or external

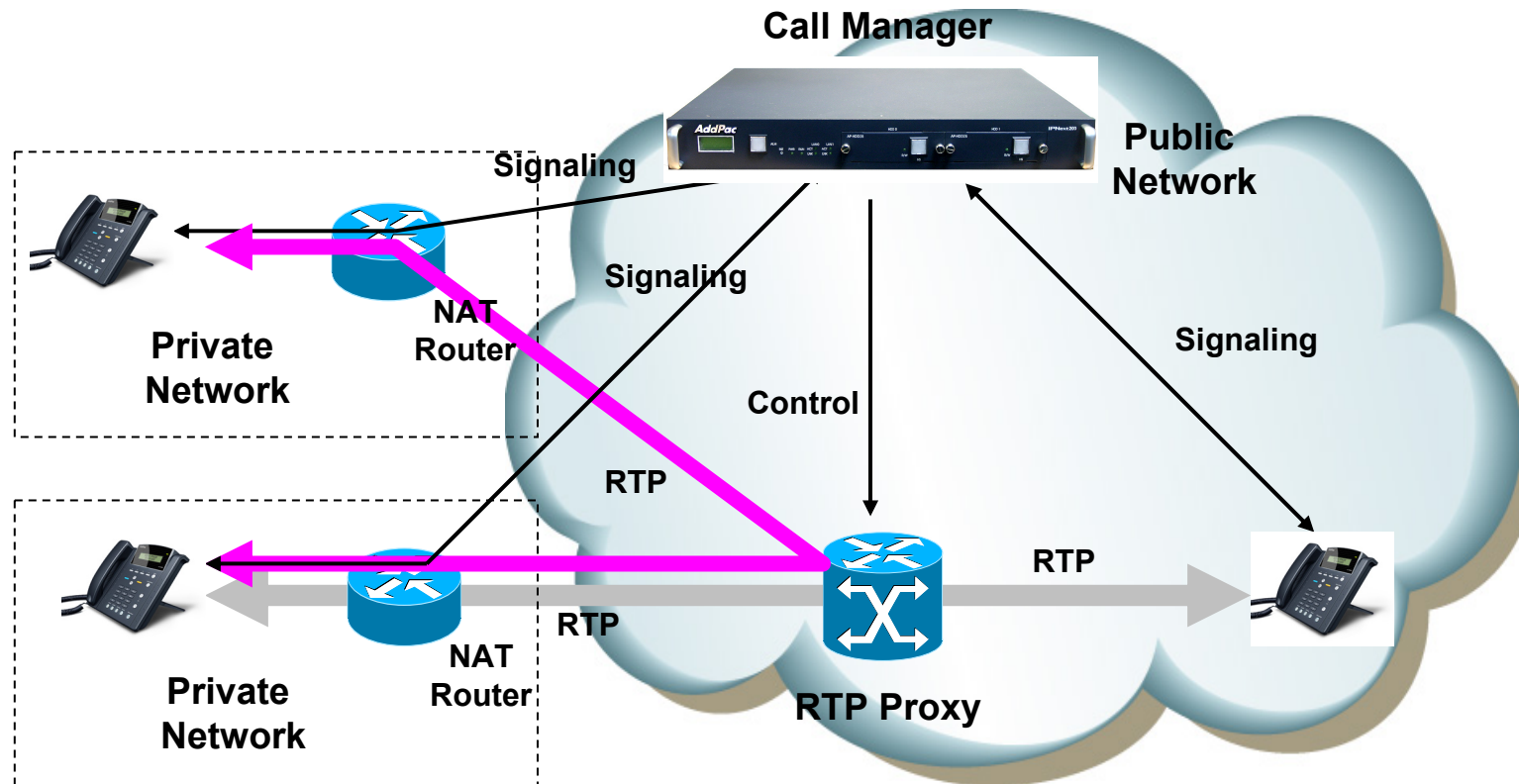


# Asymmetric/Symmetric NAT



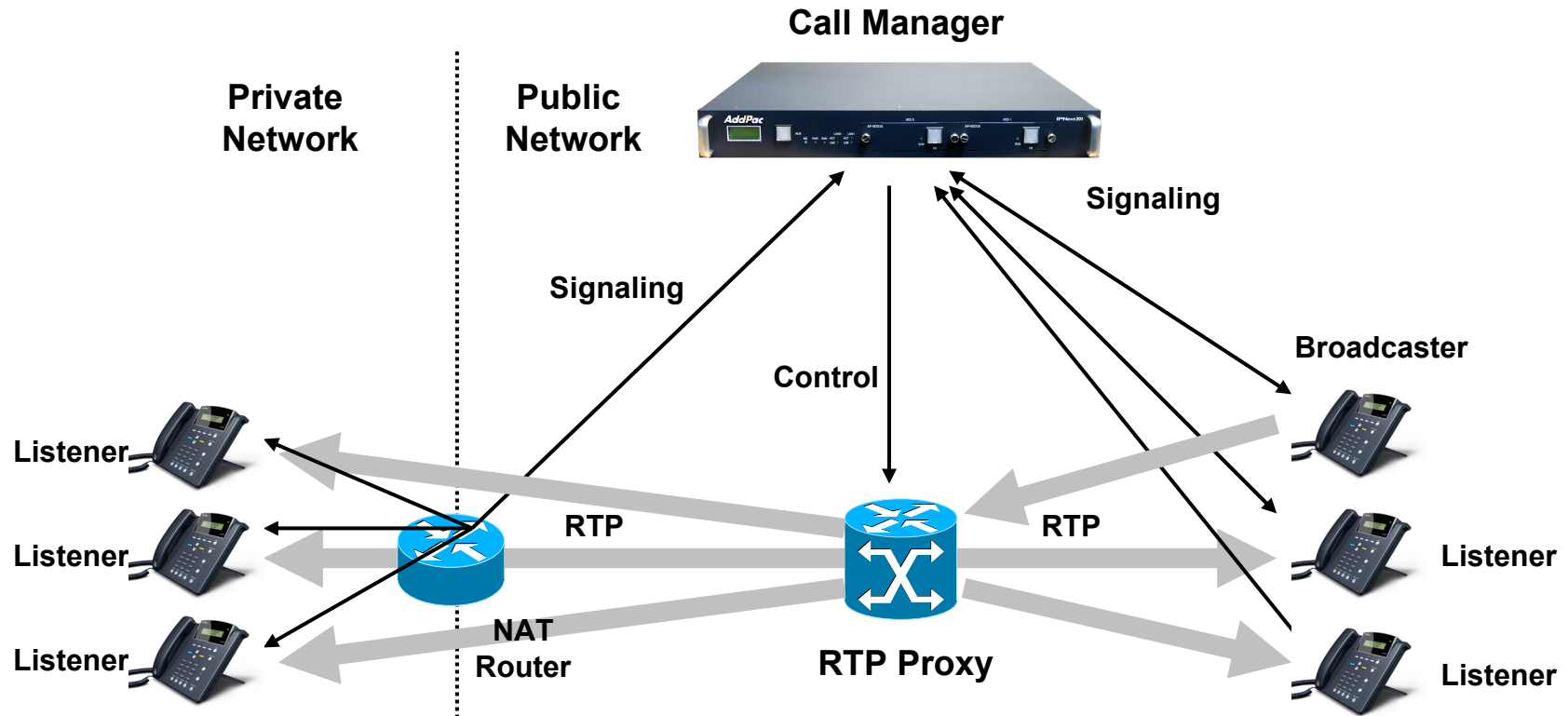
- Located in public network
- RTP Proxy has single public address
- Auto detect for asymmetric NAT via incoming RTP packet

# RTP Proxy Communication between Private IP



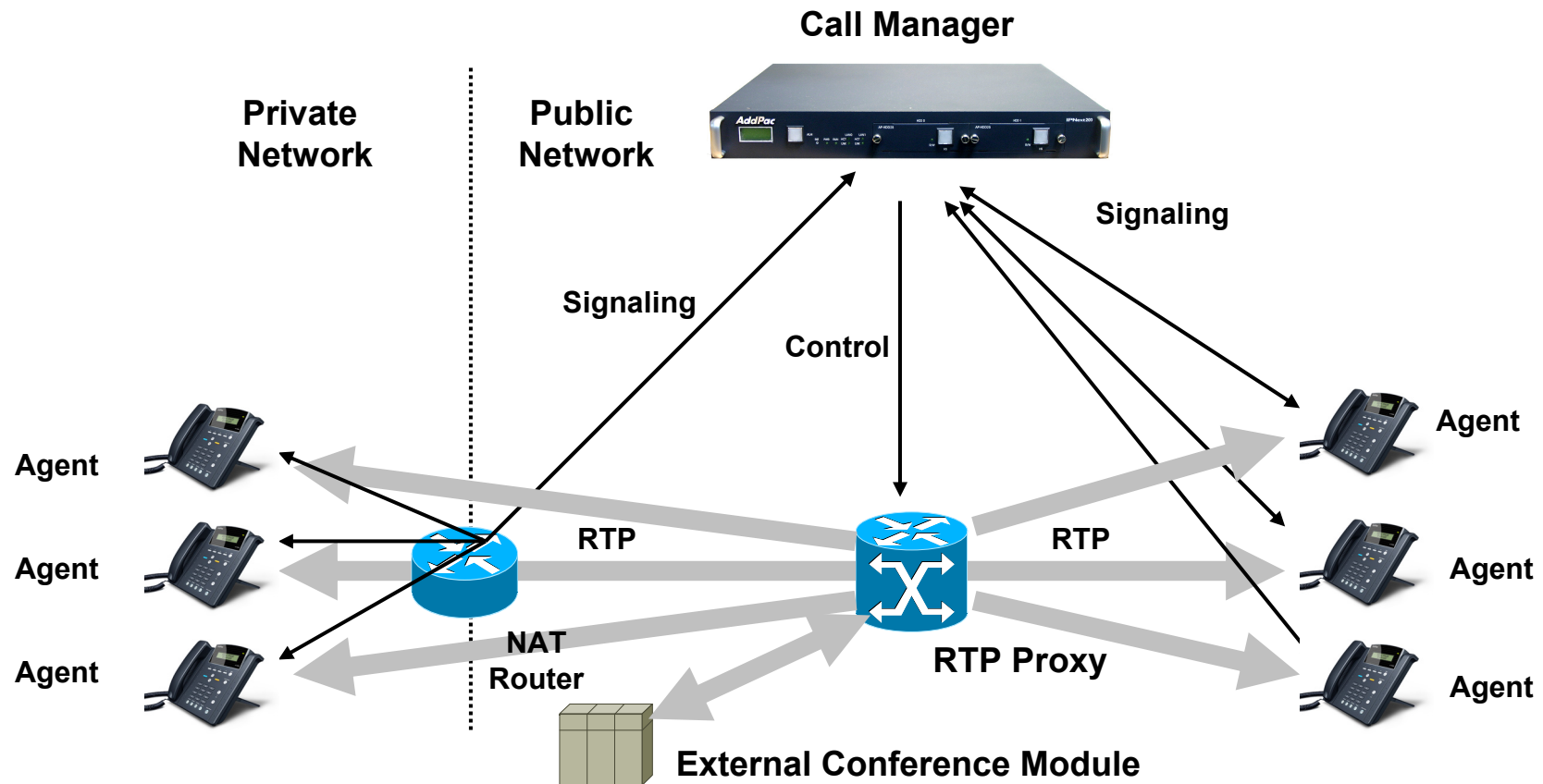
- Located in public network
- RTP Proxy has single public address
- Auto detect for asymmetric NAT via incoming RTP packet

# RTP Broadcast



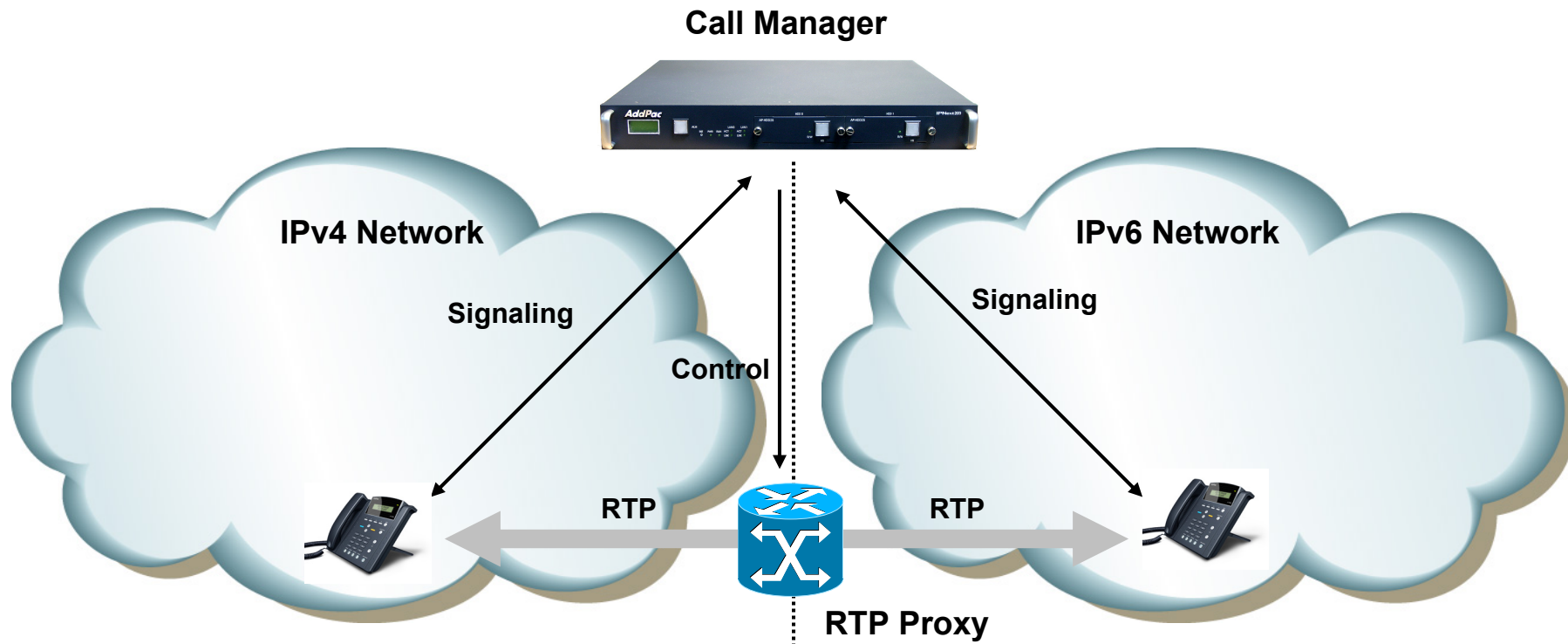
- Call Manager set the broadcaster and listener via control message
- One broadcaster and multiple listener
- RTP proxy relay for broadcaster RTP traffic
- RTP proxy never relay for listener traffic

# RTP Conference



- RTP Proxy communicate with external/internal conference module (mixer)
- Conference support for private address, asymmetric NAT

# IPv4/IPv6 RTP Proxy

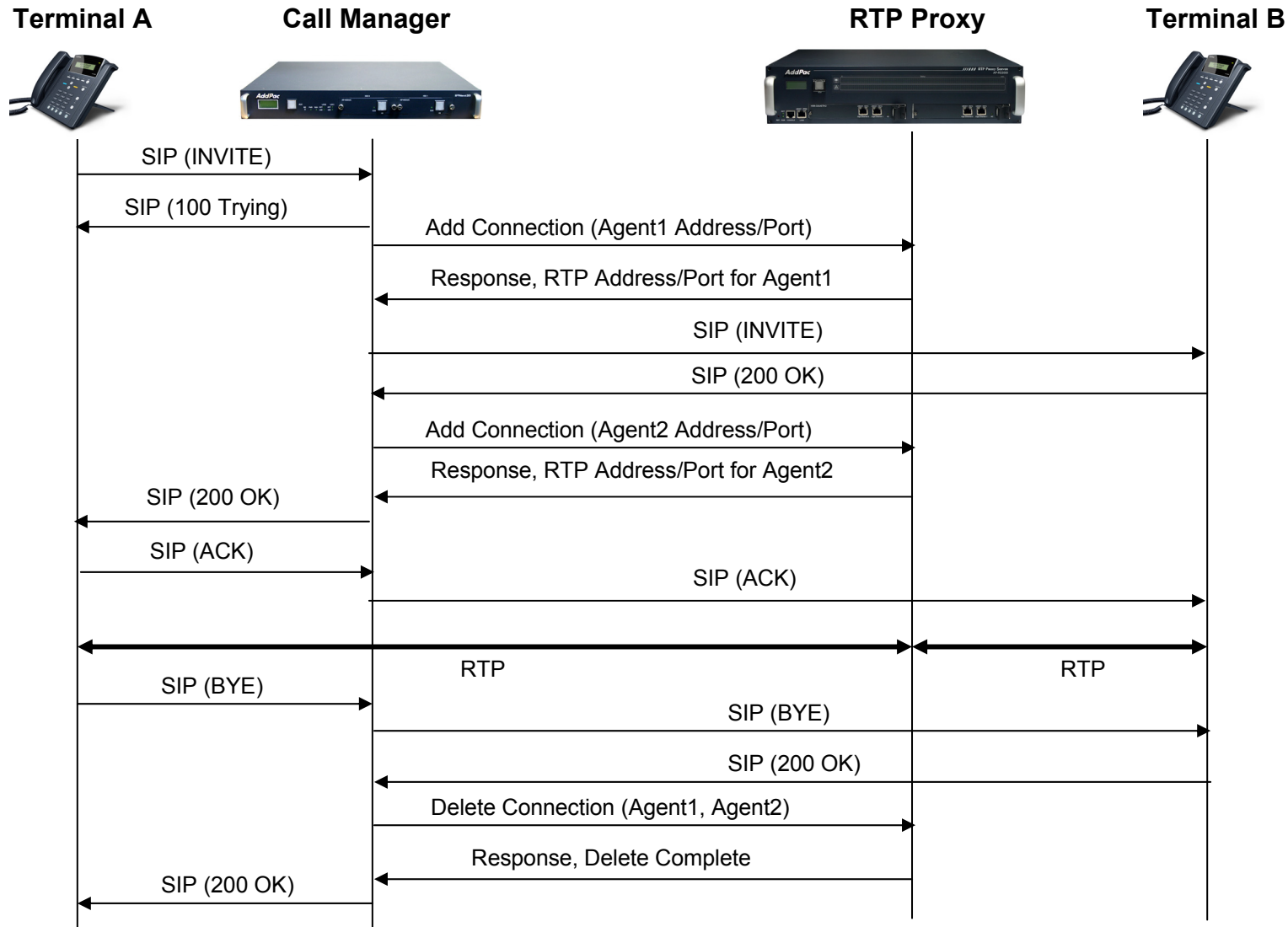


- Call manager and RTP proxy has IPv4 and IPv6 address
- Support RTP broadcasting

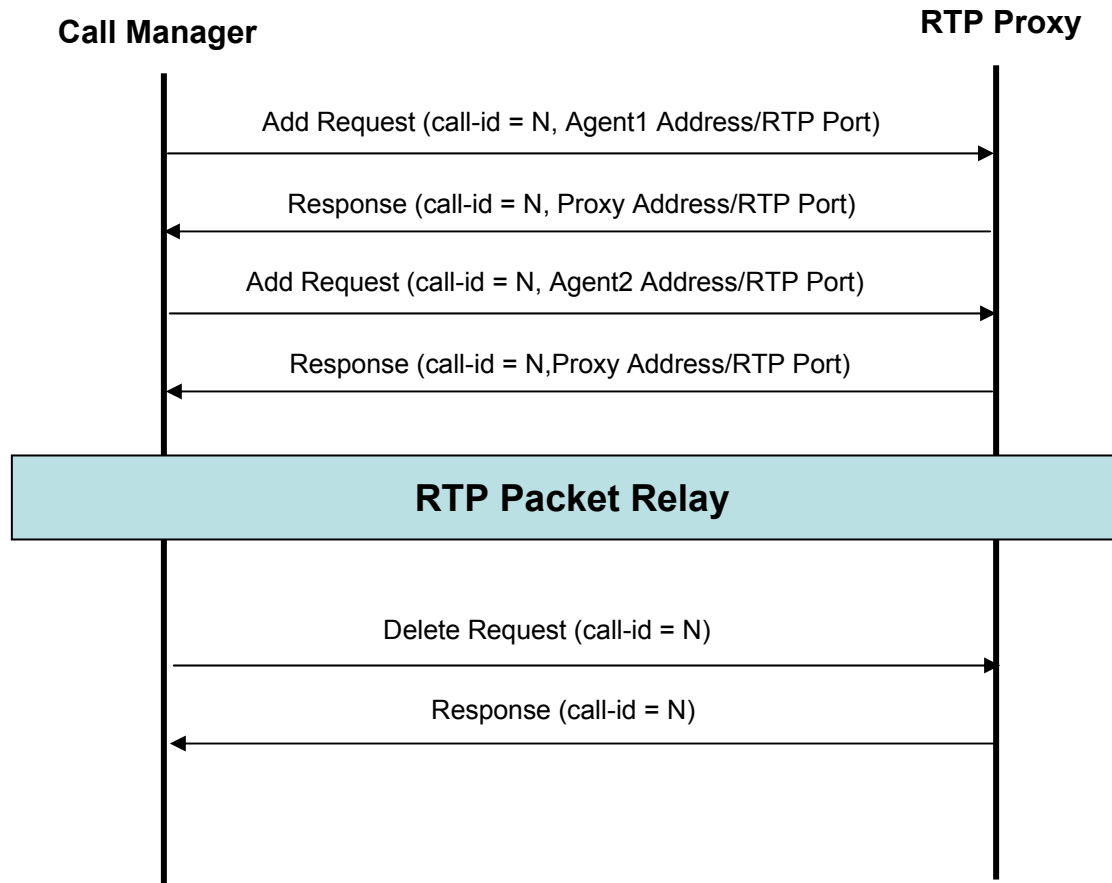


# Signal Flow Diagram

# Signal Flow Diagram (Ex: SIP)



# RTP Proxy Control Message





# Ordering Information

- **AP-RS3000 RTP Proxy Server Hardware**
  - AP-RS3000 RTP Proxy Server Main Body
  - 64bit RISC Microprocessor Architecture
  - Two(2) Gigabit Ethernet Module Slots
  - Two(2) Gigabit Ethernet Interface/Module
  - 1-port 10/100Mbps Fast Ethernet and 1-port RS-232C Console for
  - Dual Power Supply Module
  - Including Network Cable Set, etc.
- **Built-in APOS Internetworking Software for AP-RS3000**
- **Including 1 Year Hardware Warranty**
- **Product Documents**
  - Install and Operation Guide (PDF)
- **Pricing**
  - AddPac Technology Regional Sales Manager
  - Authorized Sales and Marketing Representatives
  - Please Contact [www.addpac.com](http://www.addpac.com)



# Thank you!

**AddPac Technology Co., Ltd.**  
Sales and Marketing

Phone +82.2.568.3848 (KOREA)

FAX +82.2.568.3847 (KOREA)

E-mail [sales@addpac.com](mailto:sales@addpac.com)