



# AP-IP100™

## BcN IP Phone

High Performance IP Phone Solution

Preliminary Product Overview  
(Without notice, following described technical spec. can be changed)



**AddPac**

**AddPac Technology**

2007, Sales and Marketing

[www.addpac.com](http://www.addpac.com)

# Contents

- Product Overview
- Hardware Specification
- Software Service
- Audio & Voice Service and Features
- Network Service and Features
- Application Area
- Ordering Information



# Product Overview

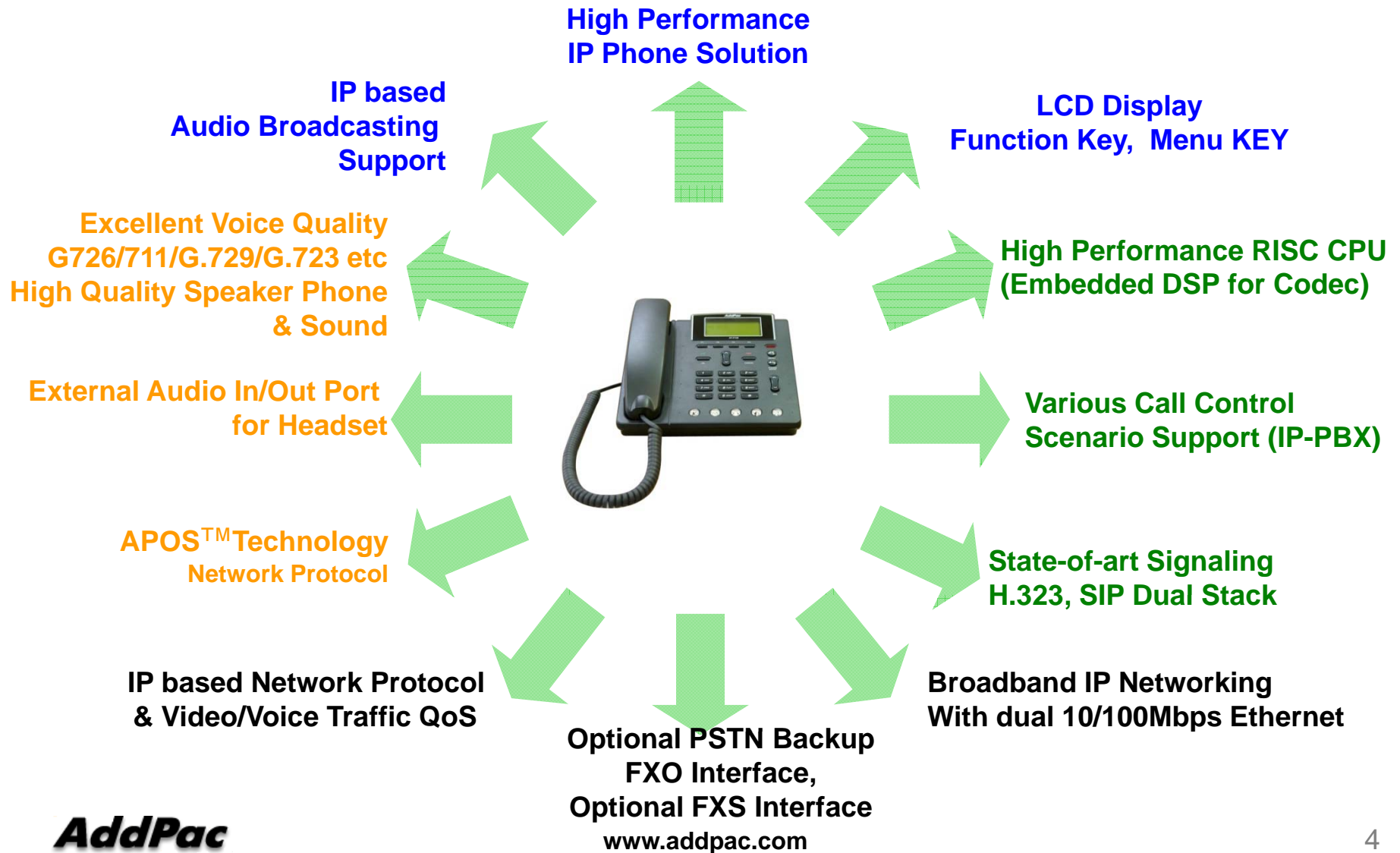
## AP-IP100 IP Phone

- IP Phone Solution
- Audio Broadcasting Solution
- High-performance Audio, and Voice Service
- Firmware Upgradeable Architecture
- VoIP Solution with Outstanding Network Service Capability
- Audio Privacy Protection



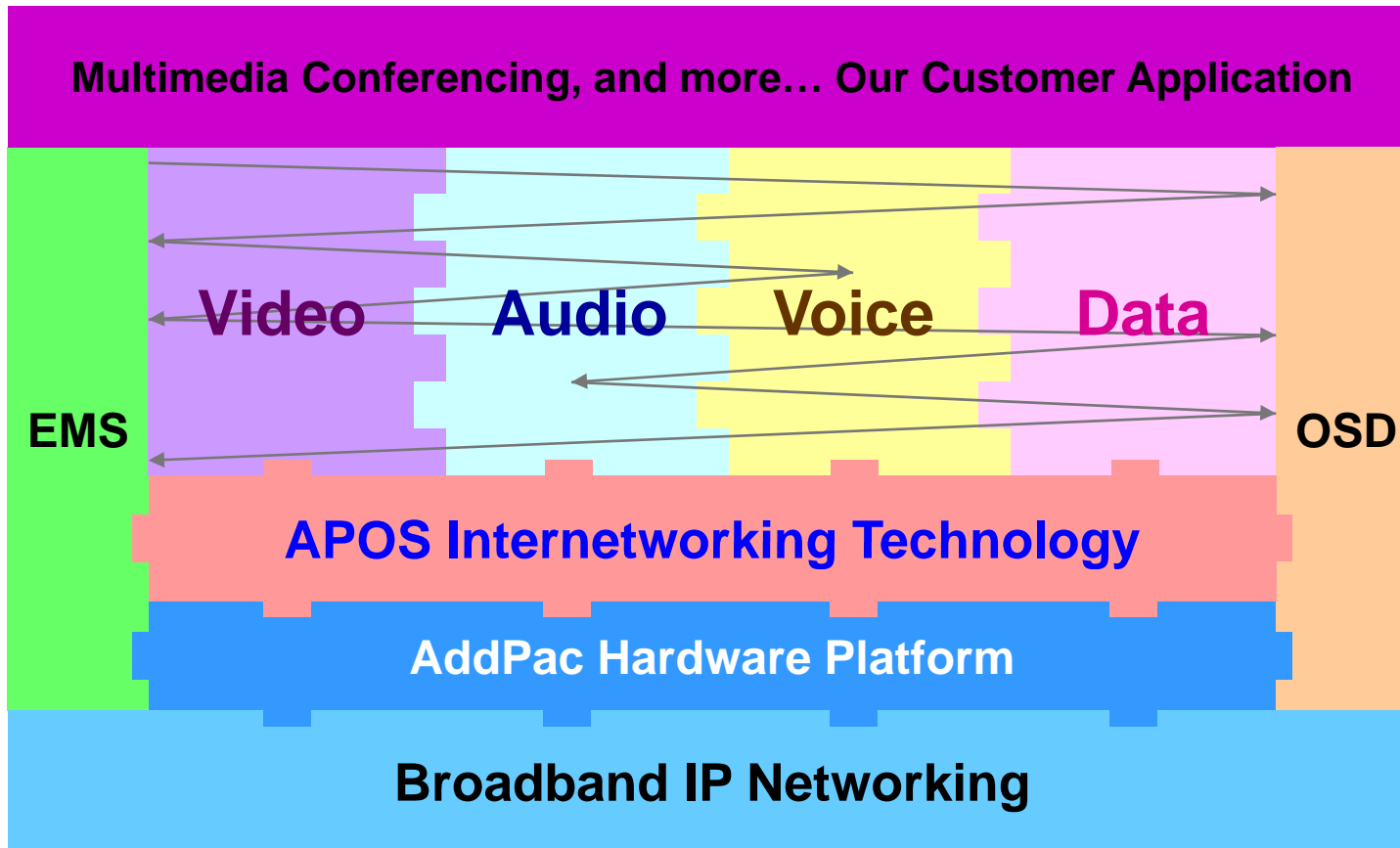
# Product Highlights

AP-IP100 IP Phone



# Multimedia Service

AP-IP100 IP Phone



- APOS : AddPac Internetworking Operating System
- OSD : On- Screen Display
- EMS : Element Management System

# Hardware Specification

## AP-IP100 IP Phone

- RISC+DSP Microprocessor Computing Power (Dual Processor Architecture)
- Optional PSTN Backup (FXO) Interface : AP-IP100E
- Optional Phone (FXS) Interface for FAX, Phone : AP-IP100B
- High quality Audio and Voice Interface
  - Stereo Audio Input Connector
  - Stereo Audio Output Connector
- Network Interface
  - Two(2) 10/100Mbps Fast Ethernet
- LCD Window : 66.54mm x 33.26mm(Active Area) Graphic LCD
- Power Supply
  - External Power Adaptor (5V, 2A)
  - Power over Ethernet(PoE) : Option

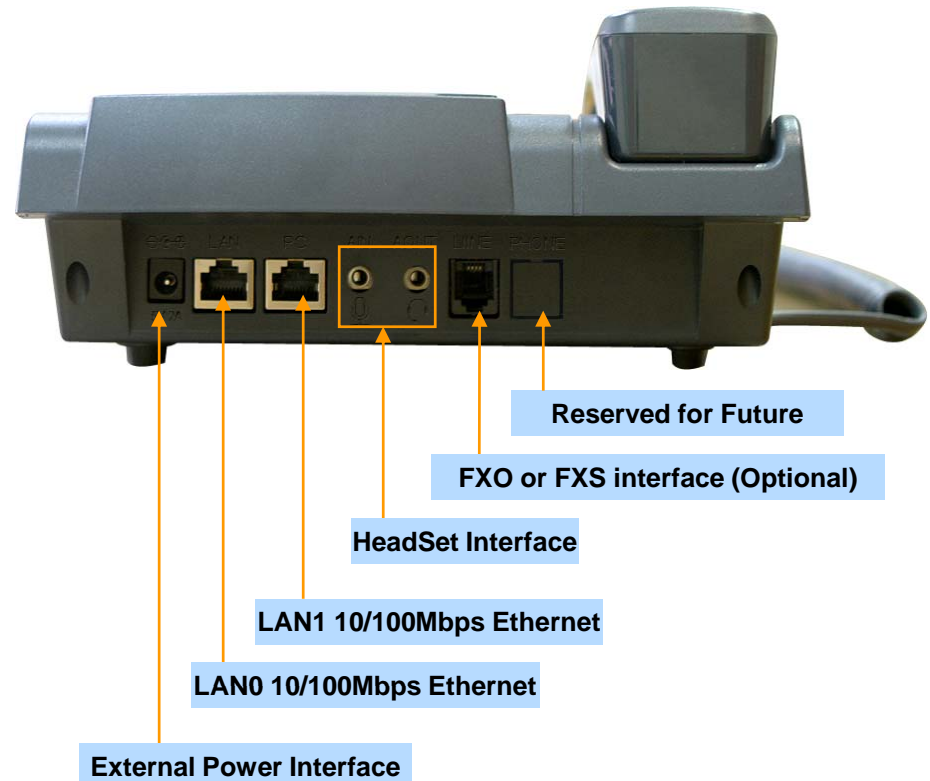
# Hardware Specification

## AP-IP100 IP Phone

### Hardware Specifications

AP-IP100 IP Phone	Basic Specifications
CPU	RISC Microprocessor
Ethernet Interface	2-Ports 10/100Mbps Ethernet Interface(RJ-45)
PSTN Backup Port (Optional)	1-Port PSTN Backup Port(RJ-11)
Additional FXS Port (Optional)	1-Ports FXS Voice Interface(RJ-11)
Flash Memory	4Mbyte High-speed Flash Memory
Base Memory	16Mbyte High-speed SDRAM
Power Requirement	External Power Supply Adaptor / VAC 110~220V, 50/60Hz, 10Watt, POE(Optional)
Operating Temperature	0°C ~ 45°C (32 °F ~ 122°F)
Storage Temperature	-40°C ~ 85°C (-40°C ~ 185°F)
Relative Humidity	5% ~ 95% (Non-condensing)
Dimensions	W x D x H (200mm x 210mm x 60mm)
Weight (g)	1Kg

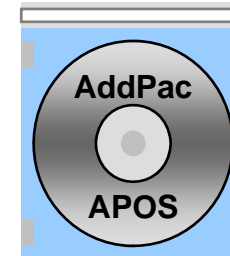
### Network interface Configurations



# Software Service

AP-IP100 IP Phone

- **Built-in AddPac APOS Internetworking Software**
  - Scalability, Functionality, and Stability Features
  - Audio Traffic QoS Control
- **Programmable Video, Audio, and Voice Services**
  - Audio, and Voice Codec
- **Firmware Upgradeable Architecture**
- **Industry Standard IP based Network Protocol Features**





# Audio & Voice Service and Features

AP-IP100 IP Phone

- **Audio & Voice Networking Interface**
  - Audio Input/Output Port (2 x 3.5mm Stereo Female Connector)
- **VoIP based Signaling Protocol Support**
  - H.323, SIP Multiple Signaling Protocol Stack
  - H.323 Gateway, Gatekeeper Support
- **High-performance Audio & Voice Codec Support**
  - Line IN/OUT : G.726, G.711 Audio Codec, etc
- **Enhanced QoS Management Features for Voice Traffics**

# Network Service and Features

## AP-IP100 IP Phone

- **Network Managements**
  - Standard SNMP Agent (MIB v2) Support
  - Remote Management using Console, Telnet
  - Web based Management using HTTP Server Interface
- **Security Functions**
  - Standard & Extended IP Access List
  - Enable/Disable for Specific Network Protocols
  - Multi-level User Account Management
  - Auto-disconnect for Telnet/Console Sessions
  - PPP User Authentication Supports (PAP & CHAP)
- **Operation & Managements**
  - System Performance Analysis for Process, CPU, Connection Interface
  - Debugging, System Auditing, and Diagnostics Support
  - System Booting and Auto-rebooting with Watchdog Feature
  - System Managements with Data Logging
  - IP Traffic Statistics with Accounting

# Network Service and Features

## AP-IP100 IP Phone

- **Network Managements**
  - DHCP Server & Relay Functions
  - Network Address Translation (NAT) Function
  - Port Address Translation (PAT) Function
  - Transparent Bridging (IEEE Standard) Function
    - Spanning Tree Bridging Protocol Support
    - Remote Bridging Support
    - Concurrent Routing and Bridging Support
  - Cisco Style Command Line Interface (CLI)
  - Network time Protocol (NTP) Support

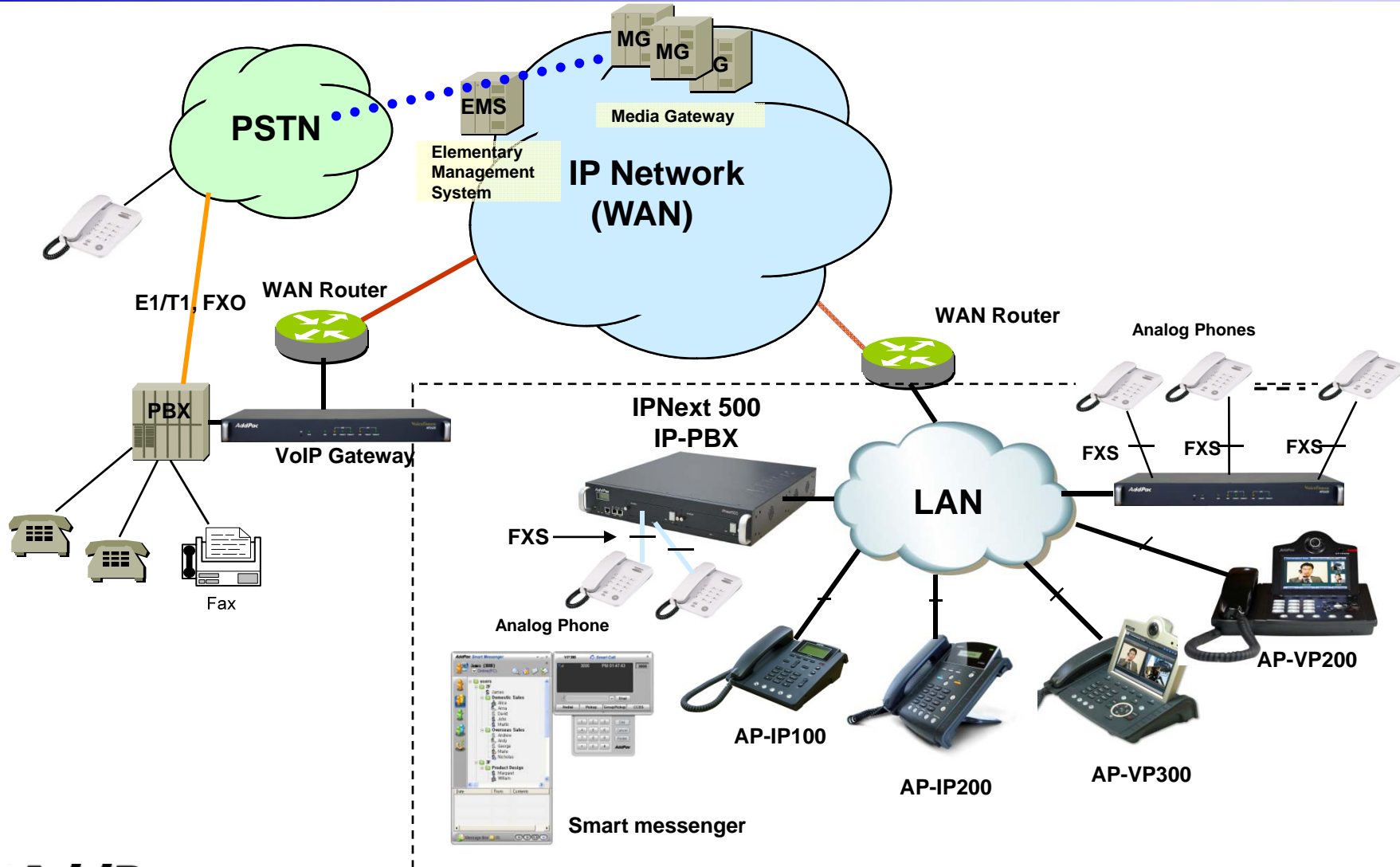
# AP-IP100 IP Phone

## Application Area

- IP-PBX IP Phone Terminal (SIP, H.323, etc)
- IP Phone + FXO VoIP Gateway : AP-IP100E
- IP Phone + FXS VoIP Gateway : AP-IP100B
- Audio/Video Real-time Broadcasting
- Audio Conference

# Standard IP-PBX Application

AP-IP100 IP Phone

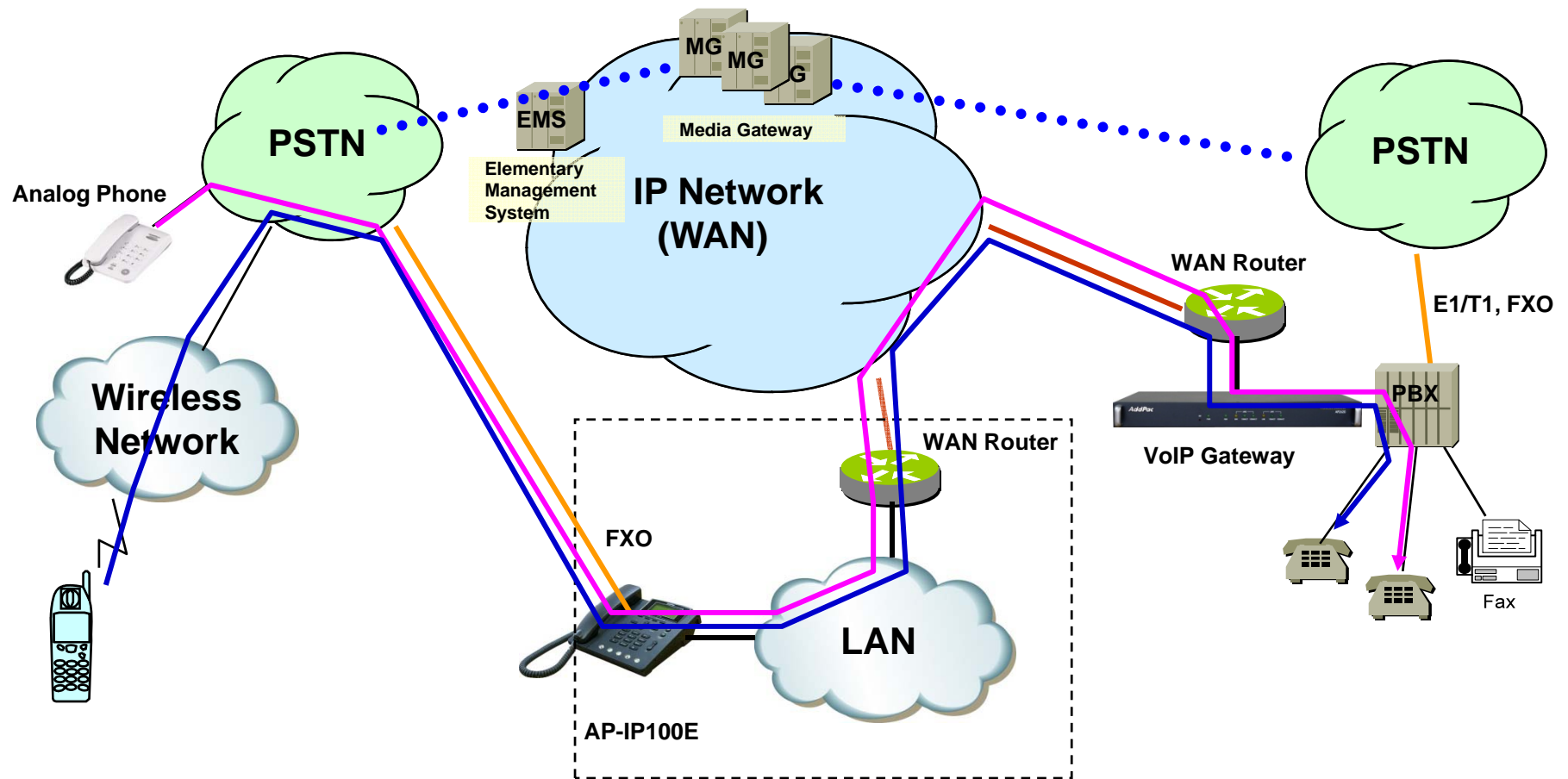


**AddPac**

[www.addpac.com](http://www.addpac.com)

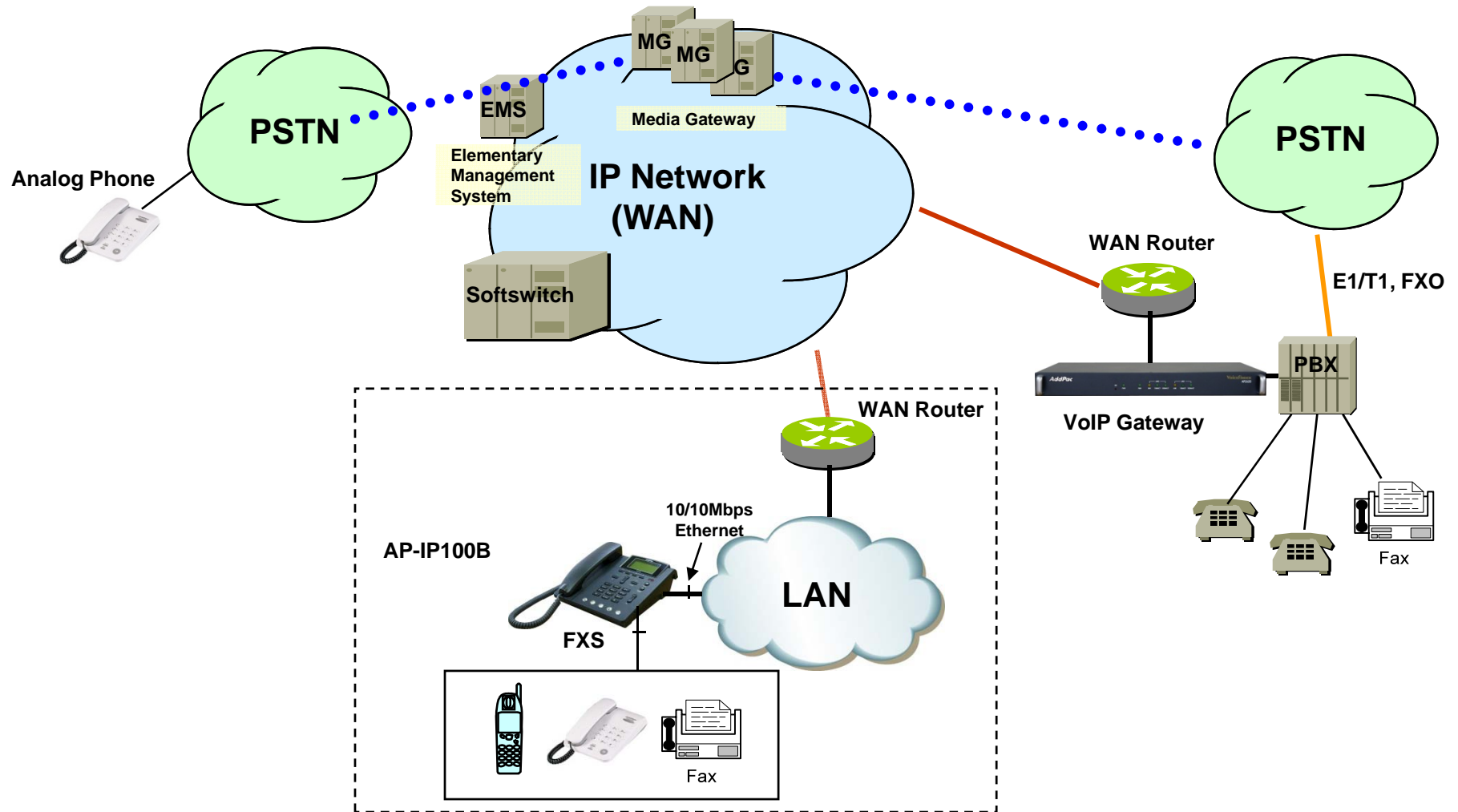
# IP Phone + FXO Gateway Application

AP-IP100 IP Phone



# IP Phone + FXS Gateway Application

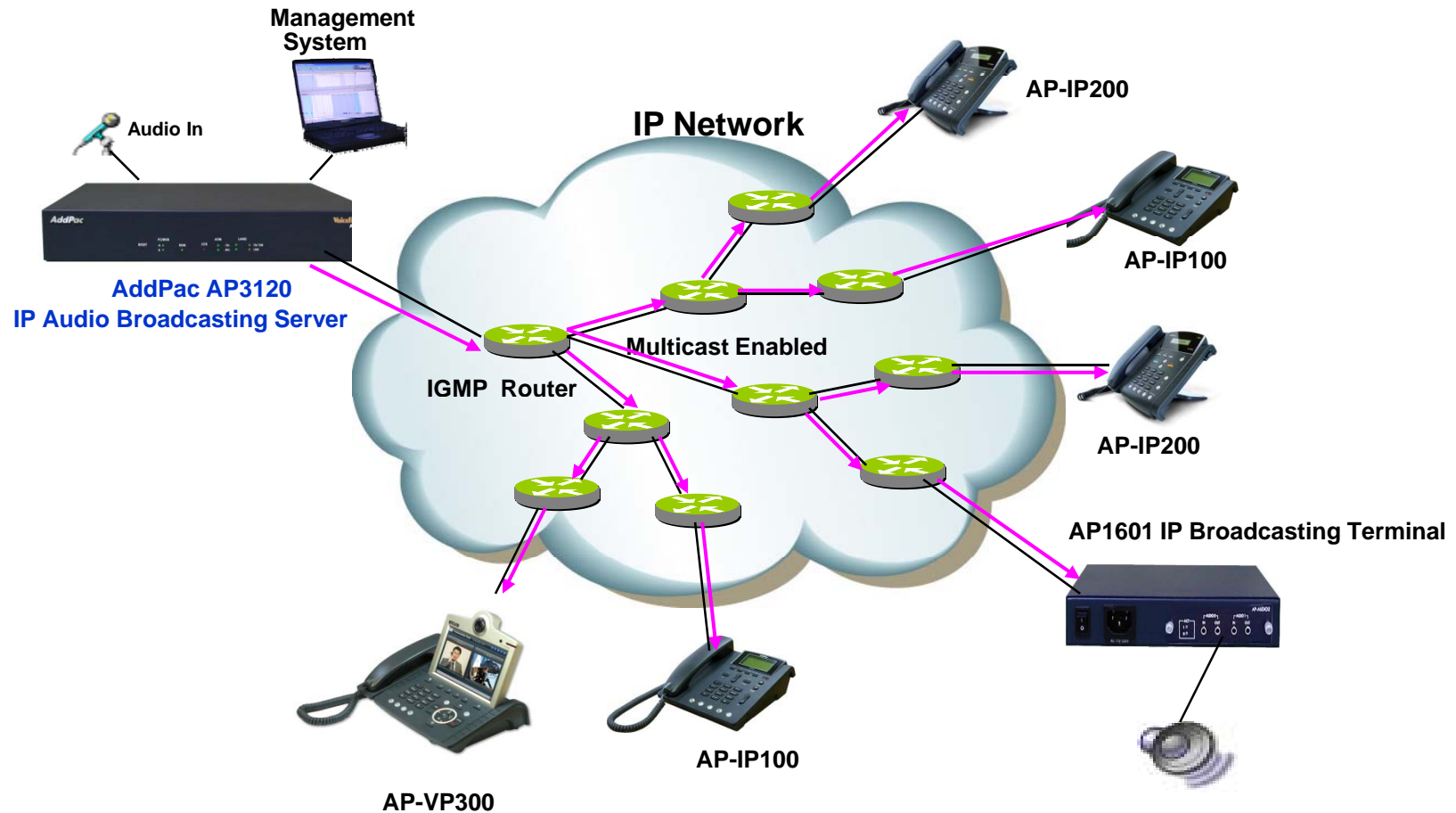
AP-IP100 IP Phone



# Audio Real-time Broadcasting

AP-IP100 IP Phone

**IP based Audio Broadcasting Service via  
Multicasting IP Network**  
(Video, Audio/Voice, and more...)



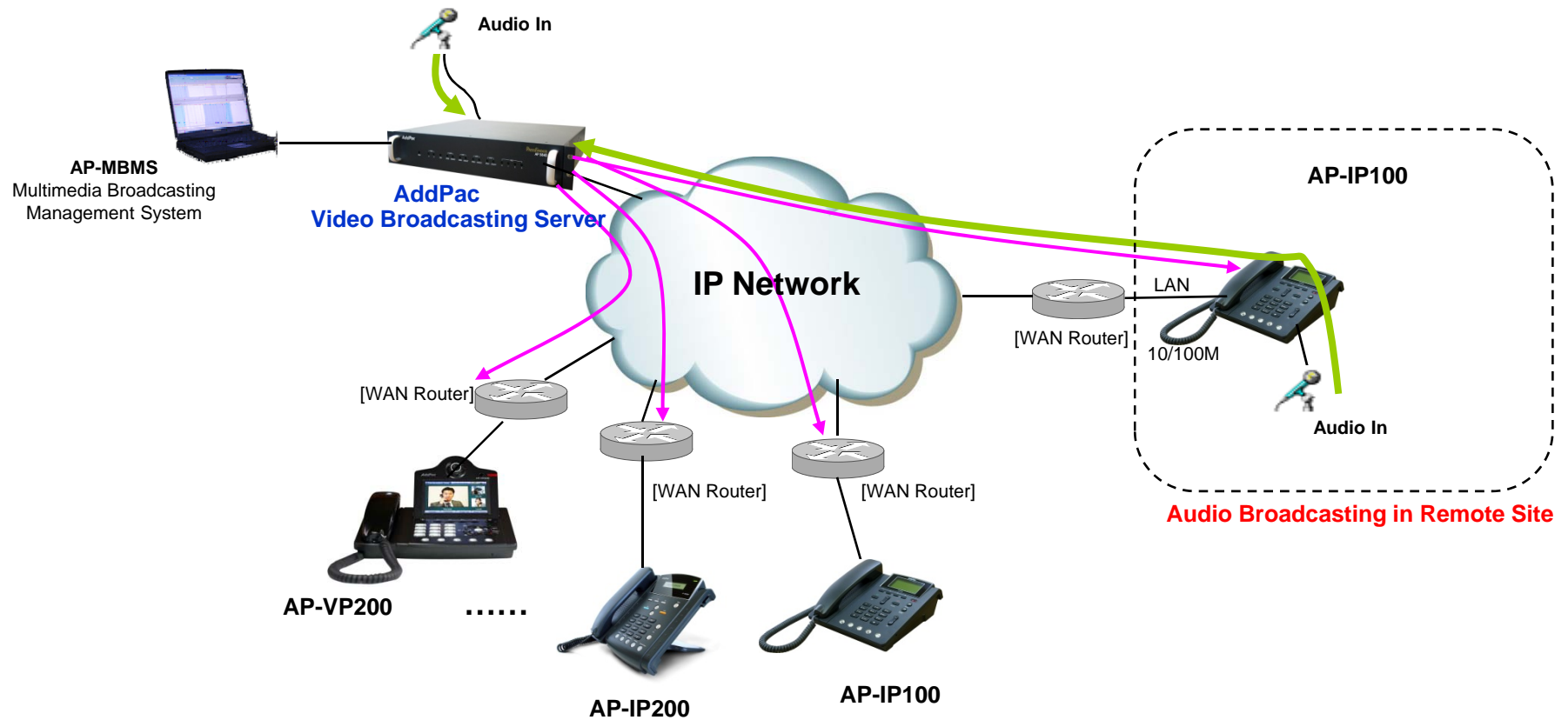


# Audio Real-time Broadcasting

AP-IP100 IP Phone

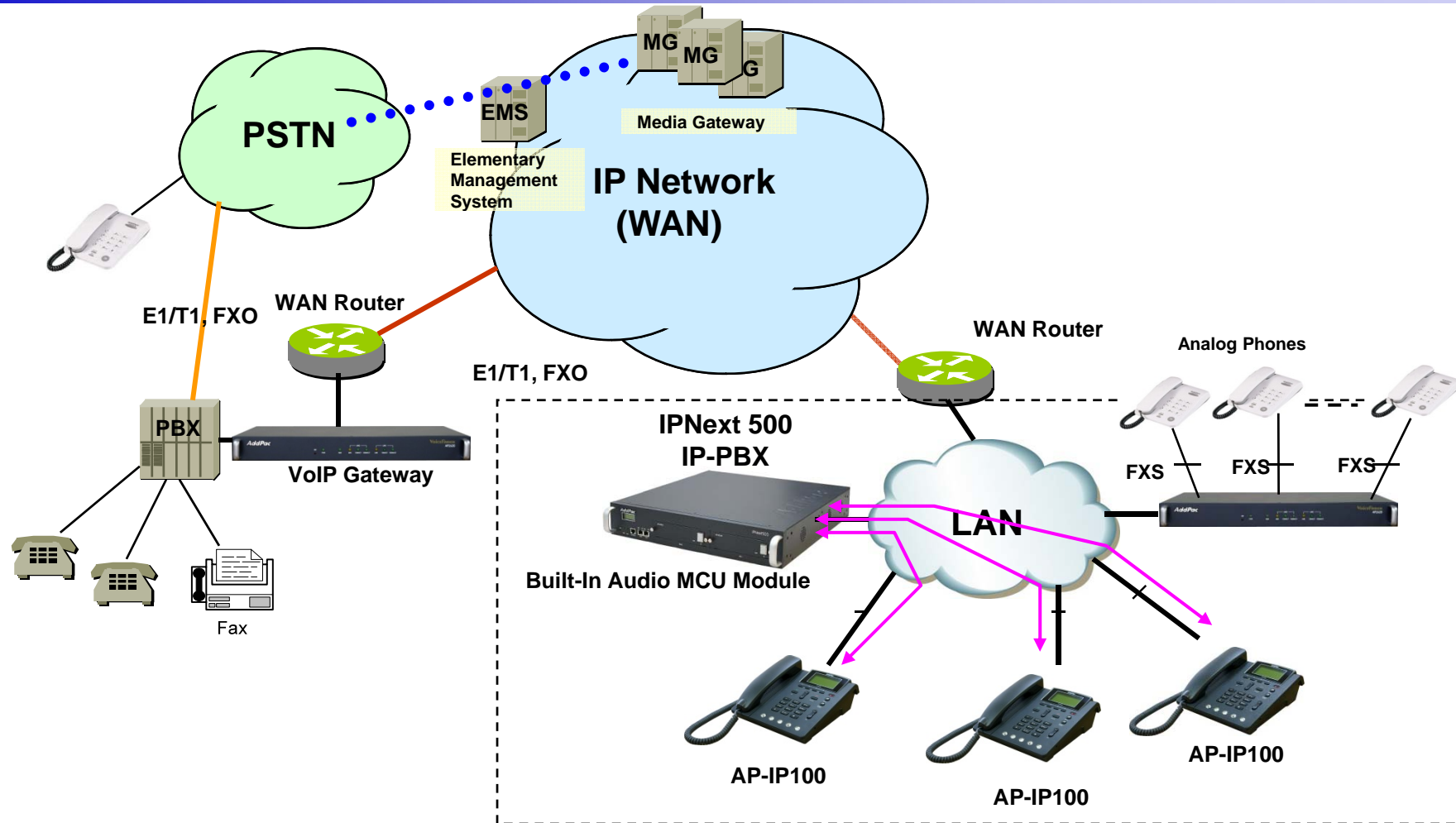
## Remote Site Audio and Video Broadcasting Service (Video, Audio/Voice, and more...)

Audio Broadcasting in HQ or Center



# Audio Conferencing (IPNext Built-In Audio MCU)

AP-IP100 IP Phone



# Ordering Information

- **AP-IP100 IP Phone Hardware**
  - AP-IP100 IP Phone Main Body
  - RISC Microprocessor with Embedded DSP Architecture
  - LCD, Function KEY, Menu KEY
  - External 3.5mm Audio Input/Output
  - 2-ports 10/100Mbps Fast Ethernet
  - Optional FXO Interface Port for PSTN Backup
  - Optional FXS Interface Port for Wireless Analog Phone, FAX, etc
  - Option : PoE
  - Including Network Cable Set & Ext. Power Supply, etc.
- **Built-in APOS Internetworking Software for AP-IP100**
- **Including 1 Year Hardware Warranty**
- **Product Documents**
  - Install and Operation Guide (PDF)
- **Pricing**
  - AddPac Technology Regional Sales Manager
  - Authorized Sales and Marketing Representatives



# Thank you!

**AddPac Technology Co., Ltd.**  
Sales and Marketing

Phone +82.2.568.3848 (KOREA)

FAX +82.2.568.3847 (KOREA)

E-mail [sales@addpac.com](mailto:sales@addpac.com)