



AP-IP150™

BcN IP Phone

High Performance Broadband Convergence Network
IP Phone Solution

Dual MAC Address Concept



AddPac

AddPac Technology

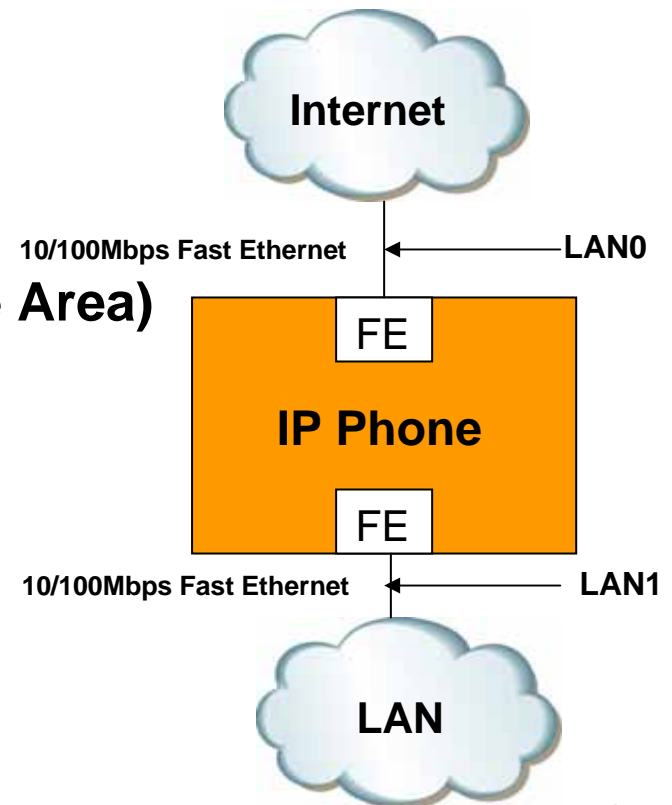
www.addpac.com

Contents

- AP-IP150 H/W Specification
- QoS Enabled VoIP Service
- Dual MAC Address Features
- Network Diagram

AP-IP150 H/W Specification

- **RISC+DSP Microprocessor Computing Power (Dual Processor Architecture)**
- **Optional FXO Interface for PSTN Backup : AP-IP150E**
- **High quality Audio and Voice Interface**
 - Stereo Audio Input Connector
 - Stereo Audio Output Connector
- **Network Interface**
 - Two(2) 10/100Mbps Fast Ethernet
- **LCD Window : 66.54mm x 24.94mm(Active Area)**
- **Graphic LCD**
- **Power Supply**
 - External Power Adaptor (5V, 2A)
- **Power Switch**
- **PoE (Power over Ethernet)**



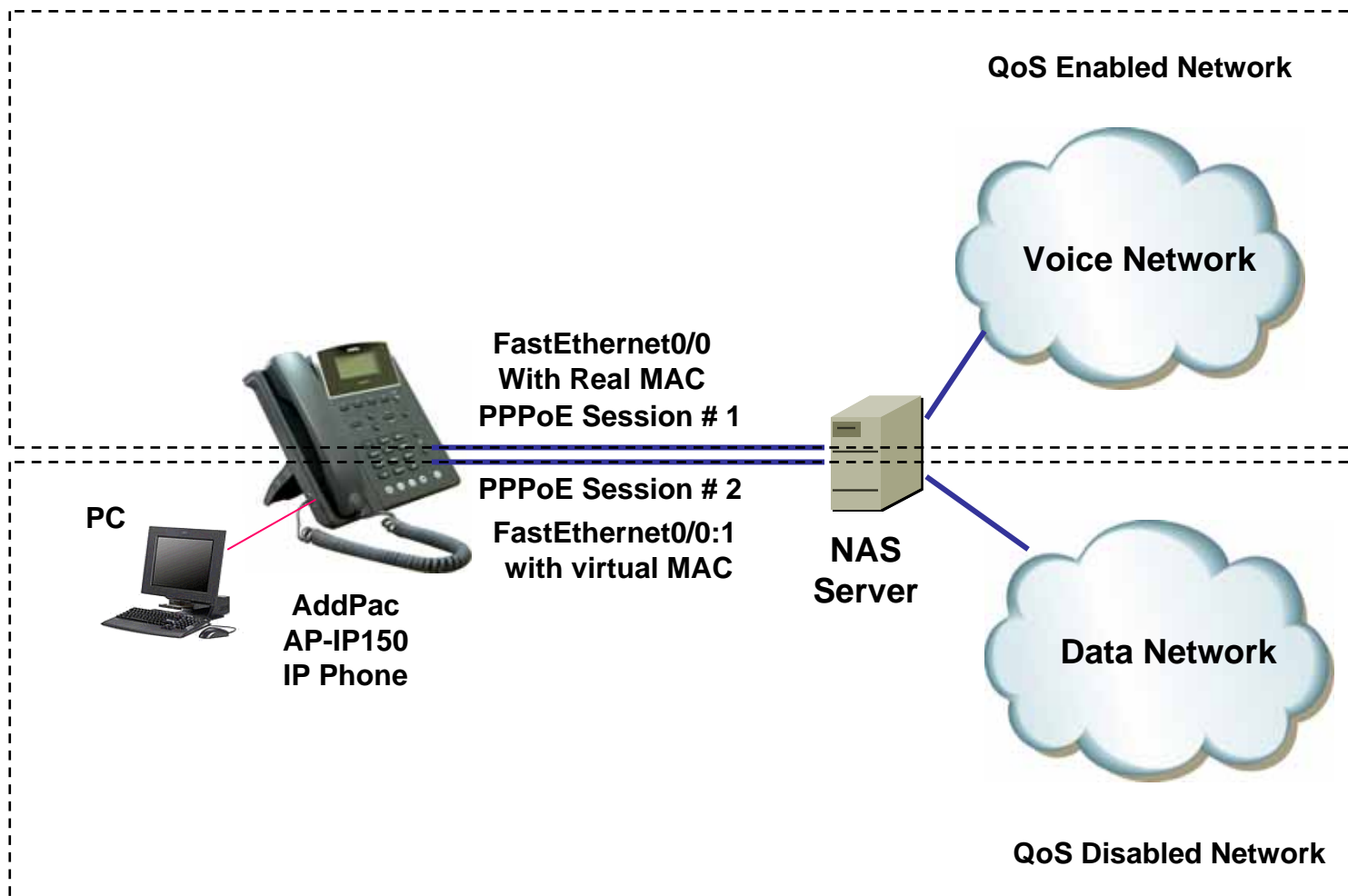
QoS Enabled VoIP Service

- AddPac VoIP Gateway supports Two(2) Ethernet Interface for LAN traffic such as Personal Computer.
- Some ISP want to provide the QoS Enable Network Service for High Quality VoIP Service.
- QoS Enabled Network Service for Real-Time Traffic such as Voice over IP traffic
- Best Effort Network Service for Normal Data Traffic such as Web, Email

Dual MAC Address Features

- Normally working at PPPoE Environment (DHCP also possible)
- PPPoE Server(NAS) has 2 service (voice & data)
- Gateway support 2 MAC Address
 - Real MAC Address
 - Virtual MAC Address
- The User set the virtual MAC address at Ethernet Sub-interface
- Gateway Get Public Address using PPPoE with different PPPoE Service Name

Network Diagram



IP Phone Series

Thank you!

AddPac Technology Co., Ltd.
Sales and Marketing

Phone +82.2.568.3848 (KOREA)

FAX +82.2.568.3847 (KOREA)

E-mail sales@addpac.com