



AP-IP160™

BcN IP Phone

High Performance IP Phone Solution

Preliminary Product Overview

(Without notice, following described technical spec. can be changed)



AddPac

AddPac Technology

2008, Sales and Marketing

www.addpac.com

Contents

AP-IP160 IP Phone

- Product Overview
- Hardware Specification
- Software Service
- Audio & Voice Service and Features
- Network Service and Features
- Application Area
- Ordering Information

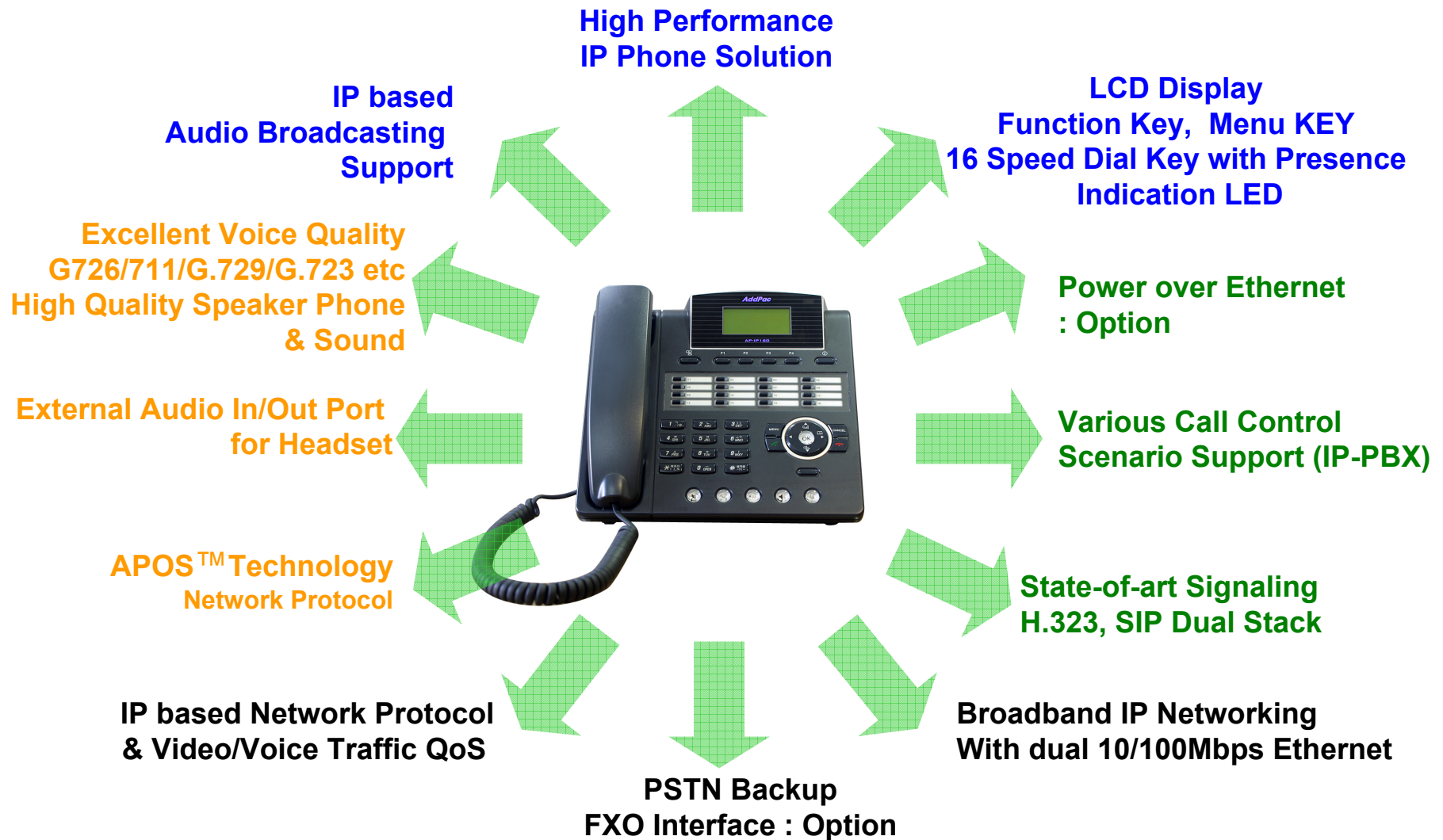
Product Overview

AP-IP160 IP Phone

- IP Phone Solution
- 16 Speed-Dial Key with Presence Indication Lamp
- Audio Broadcasting Solution
- High-performance Audio, and Voice Service
- Firmware Upgradeable Architecture
- VoIP Solution with Outstanding Network Service Capability
- Audio Privacy Protection

Product Highlights

AP-IP160 IP Phone

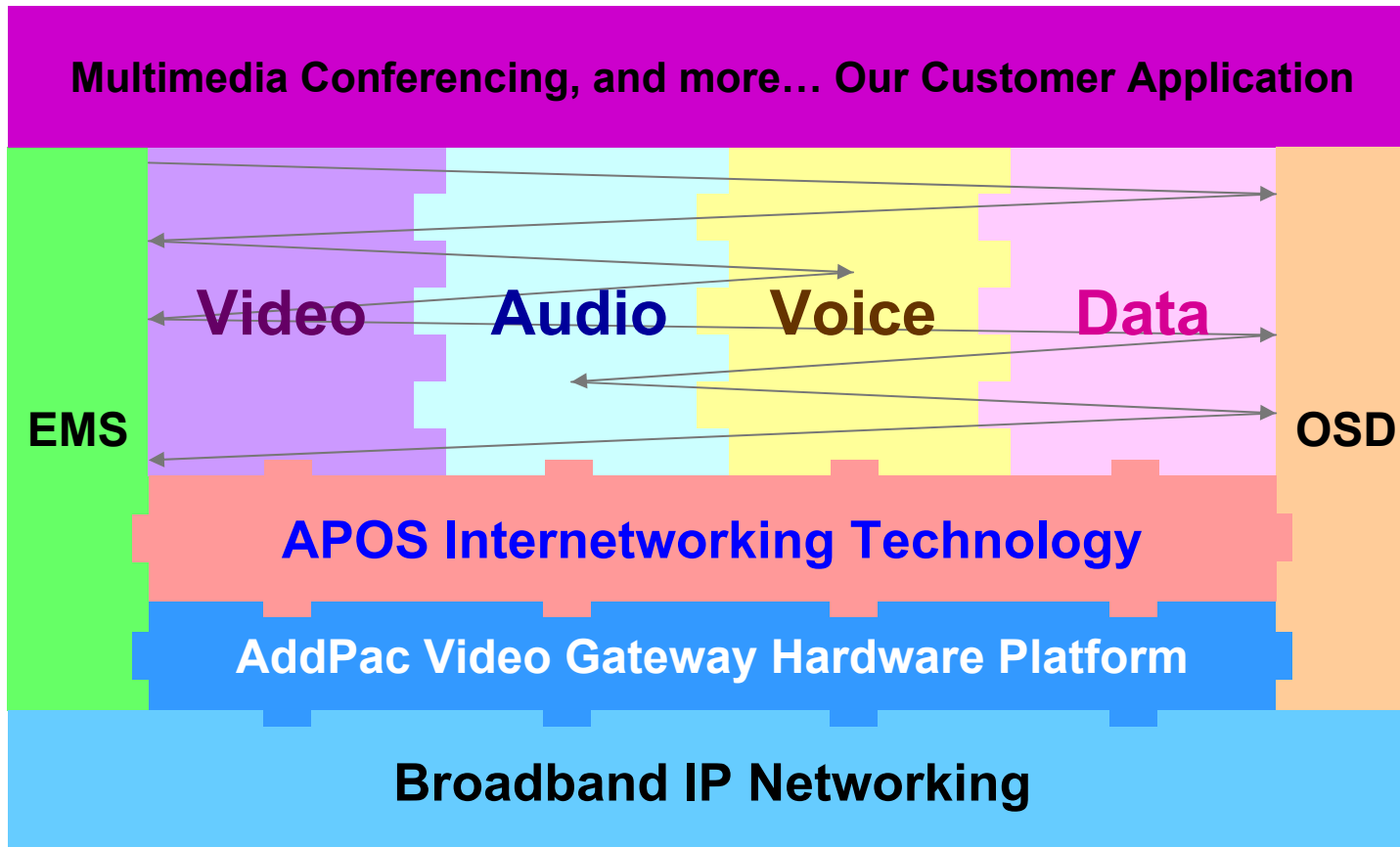


AddPac

www.addpac.com

Multimedia Service

AP-IP160 IP Phone



- APOS : AddPac Internetworking Operating System
- OSD : On- Screen Display
- EMS : Element Management System

Hardware Specification

AP-IP160 IP Phone

- **RISC+DSP Microprocessor Computing Power (Dual Processor Architecture)**
- **Optional PSTN Backup (FXO) Interface**
- **Optional PoE (Power over Ethernet)**
- **High quality Audio and Voice Interface**
 - Stereo Audio Input Connector
 - Stereo Audio Output Connector
- **Network Interface**
 - Two(2) 10/100Mbps Fast Ethernet
- **LCD Window : Graphic LCD (4 Line Text)**
- **16 Speed-Dial Key with Presence Indication LAMP**
- **Navigation Key for Menu Search, etc**
- **Power Supply**
 - External Power Adaptor (5V, 2A)

Hardware Specification

AP-IP160 IP Phone

Hardware Specifications

AP-IP160 IP Phone	Basic Specifications
CPU	RISC Microprocessor
Ethernet Interface	2-Ports 10/100Mbps Ethernet Interface(RJ-45)
PSTN Backup Port (Optional)	1-Port PSTN Backup Port(RJ-11)
Flash Memory	4Mbyte High-speed Flash Memory
Base Memory	16Mbyte High-speed SDRAM
Power Requirement	External Power Supply Adaptor / VAC 110~220V, 50/60Hz, 10Watt(5V,2A)
	Power over Ethernet (option)
Operating Temperature	0°C ~ 45°C (32 °F ~ 122°F)
Storage Temperature	-40°C ~ 85°C (-40°C ~ 185°F)
Relative Humidity	5% ~ 95% (Non-condensing)
Dimensions	D x W x H : (179 x 219 x 173 mm, 45 degree)
Weight (g)	1.2Kg

Network interface Configurations

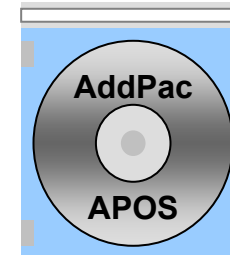
Back Side



Software Service

AP-IP160 IP Phone

- **Built-in AddPac APOS Internetworking Software**
 - Scalability, Functionality, and Stability Features
 - Audio Traffic QoS Control
- **Programmable Video, Audio, and Voice Services**
 - Audio, and Voice Codec
- **Firmware Upgradeable Architecture**
- **Industry Standard IP based Network Protocol Features**



Audio & Voice Service and Features

AP-IP160 IP Phone

- **Audio & Voice Networking Interface**
 - Audio Input/Output Port (2 x 3.5mm Stereo Female Connector)
- **VoIP based Signaling Protocol Support**
 - H.323, SIP Multiple Signaling Protocol Stack
 - H.323 Gateway, Gatekeeper Support
- **High-performance Audio & Voice Codec Support**
 - Line IN/OUT : G.726, G.711 Audio Codec, etc
- **Enhanced QoS Management Features for Voice Traffics**

Network Service and Features

AP-IP160 IP Phone

- **Network Managements**
 - Standard SNMP Agent (MIB v2) Support
 - Remote Management using Console, Telnet
 - Web based Management using HTTP Server Interface
- **Security Functions**
 - Standard & Extended IP Access List
 - Enable/Disable for Specific Network Protocols
 - Multi-level User Account Management
 - Auto-disconnect for Telnet/Console Sessions
 - PPP User Authentication Supports (PAP & CHAP)
- **Operation & Managements**
 - System Performance Analysis for Process, CPU, Connection Interface
 - Debugging, System Auditing, and Diagnostics Support
 - System Booting and Auto-rebooting with Watchdog Feature
 - System Managements with Data Logging
 - IP Traffic Statistics with Accounting

Network Service and Features

AP-IP160 IP Phone

- **Network Managements**
 - DHCP Server & Relay Functions
 - Network Address Translation (NAT) Function
 - Port Address Translation (PAT) Function
 - Transparent Bridging (IEEE Standard) Function
 - Spanning Tree Bridging Protocol Support
 - Remote Bridging Support
 - Concurrent Routing and Bridging Support
 - Cisco Style Command Line Interface (CLI)
 - Network time Protocol (NTP) Support

Application Area

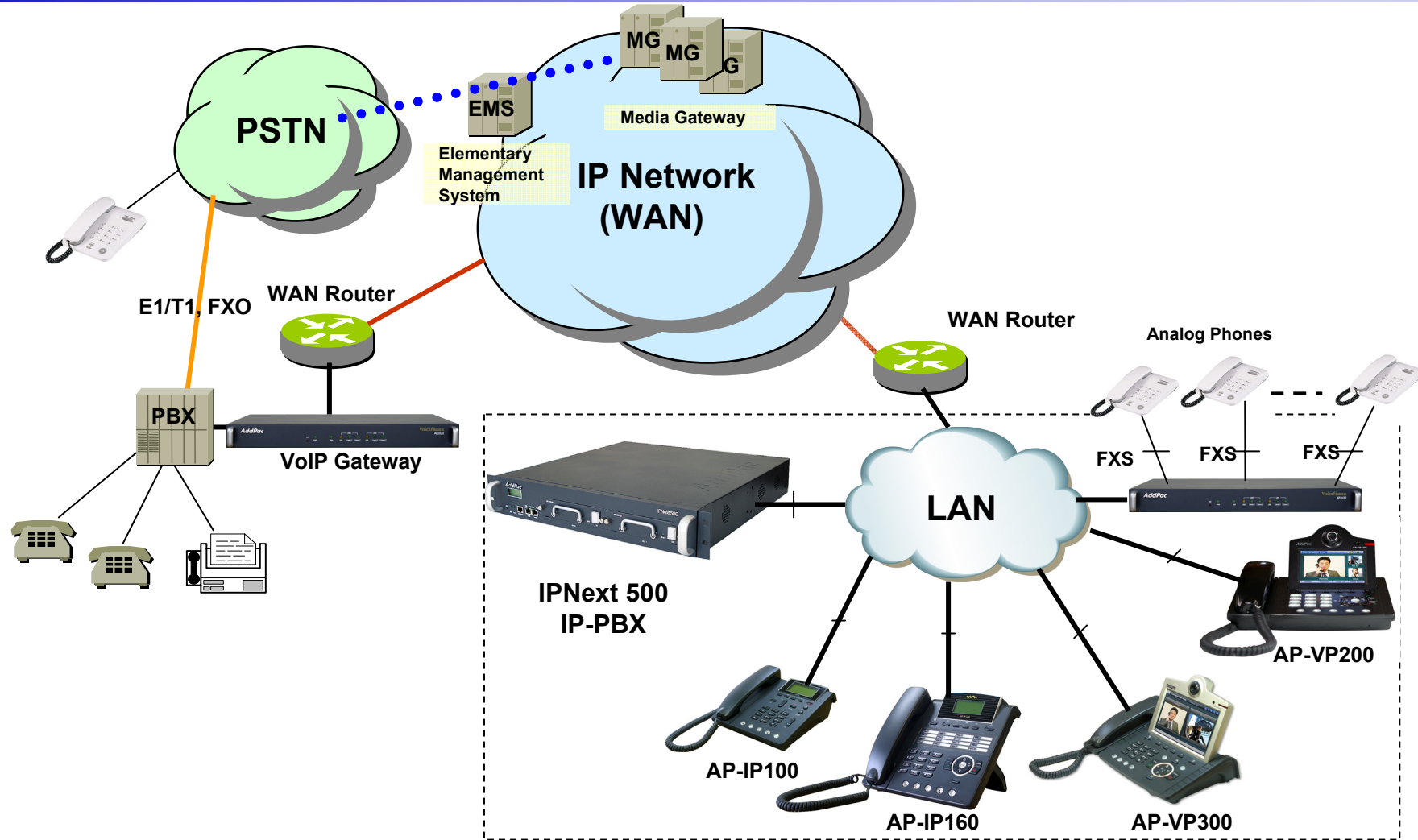
AP-IP160 IP Phone

- IP-PBX IP Phone Terminal (SIP, H.323, etc)
- Audio Real-time Broadcasting
- Audio Conference (via IP-PBX)
- 3-party Audio Conference



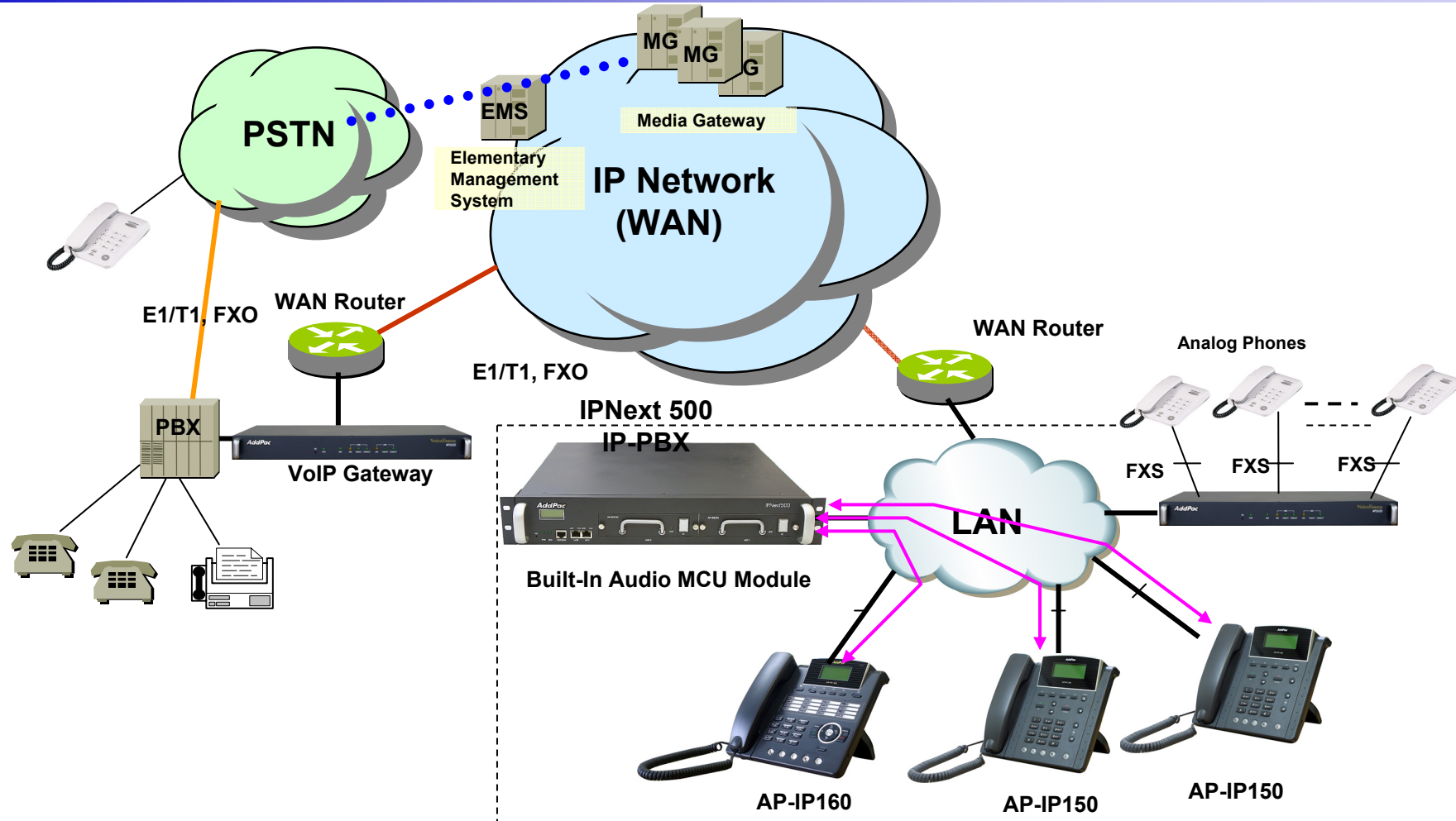
Standard IP-PBX Application

AP-IP160 IP Phone



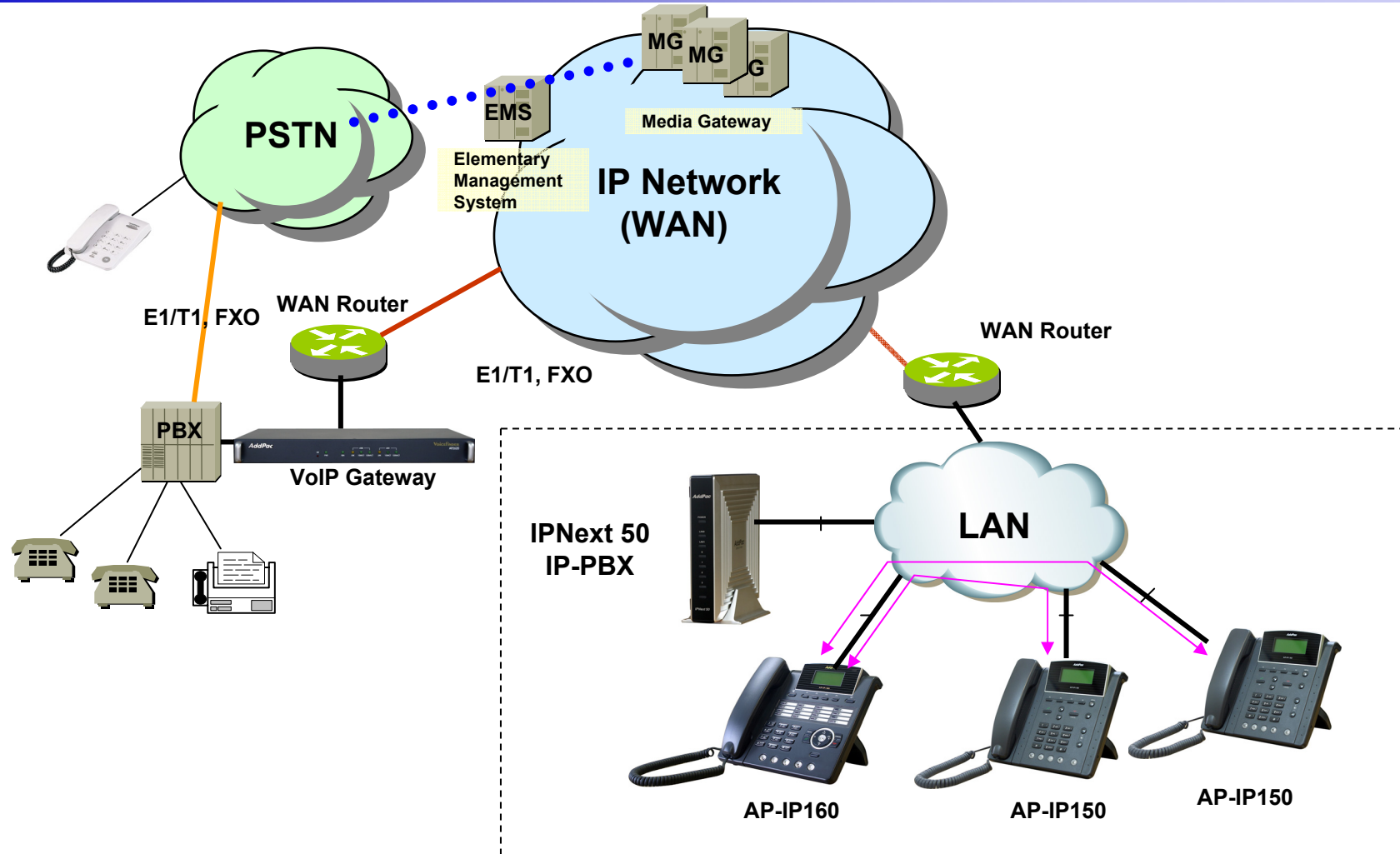
Audio Conferencing (IPNext Built-In Audio MCU)

AP-IP160 IP Phone



3-Party Audio Conferencing

AP-IP160 IP Phone



Ordering Information

- **AP-IP160 IP Phone Hardware**
 - AP-IP160 IP Phone Main Body
 - RISC Microprocessor with Embedded DSP Architecture
 - LCD, Function KEY, Menu KEY
 - 16 Speed-Dial Key with Presence Indication LAMP
 - External 3.5mm Audio Input/Output
 - 2-ports 10/100Mbps Fast Ethernet
 - Optional FXO Interface Port for PSTN Backup
 - Optional PoE (Power over Ethernet)
 - Including Network Cable Set & Ext. Power Supply, etc.
- **Built-in APOS Internetworking Software for AP-IP160**
- **Including 1 Year Hardware Warranty**
- **Product Documents**
 - Install and Operation Guide (PDF)
- **Pricing**
 - AddPac Technology Regional Sales Manager
 - Authorized Sales and Marketing Representatives
 - Please Contact www.addpac.com



Thank you!

AddPac Technology Co., Ltd.
Sales and Marketing

Phone +82.2.568.3848 (KOREA)

FAX +82.2.568.3847 (KOREA)

E-mail sales@addpac.com