

# AP-HC3000™

## HD Video Signal Converter Module

High-performance Network HD DVR Solution

### Preliminary Product Overview

(Without notice, following described technical spec. can be changed)



**AddPac**

**AddPac Technology**

2010, Sales and Marketing

# Contents

- Product Overview
- Product Highlight
- Hardware Specification
- Software Service
- Video Signal Converting Matrix
- Network Service and Features
- Network Application Service
- Ordering Information

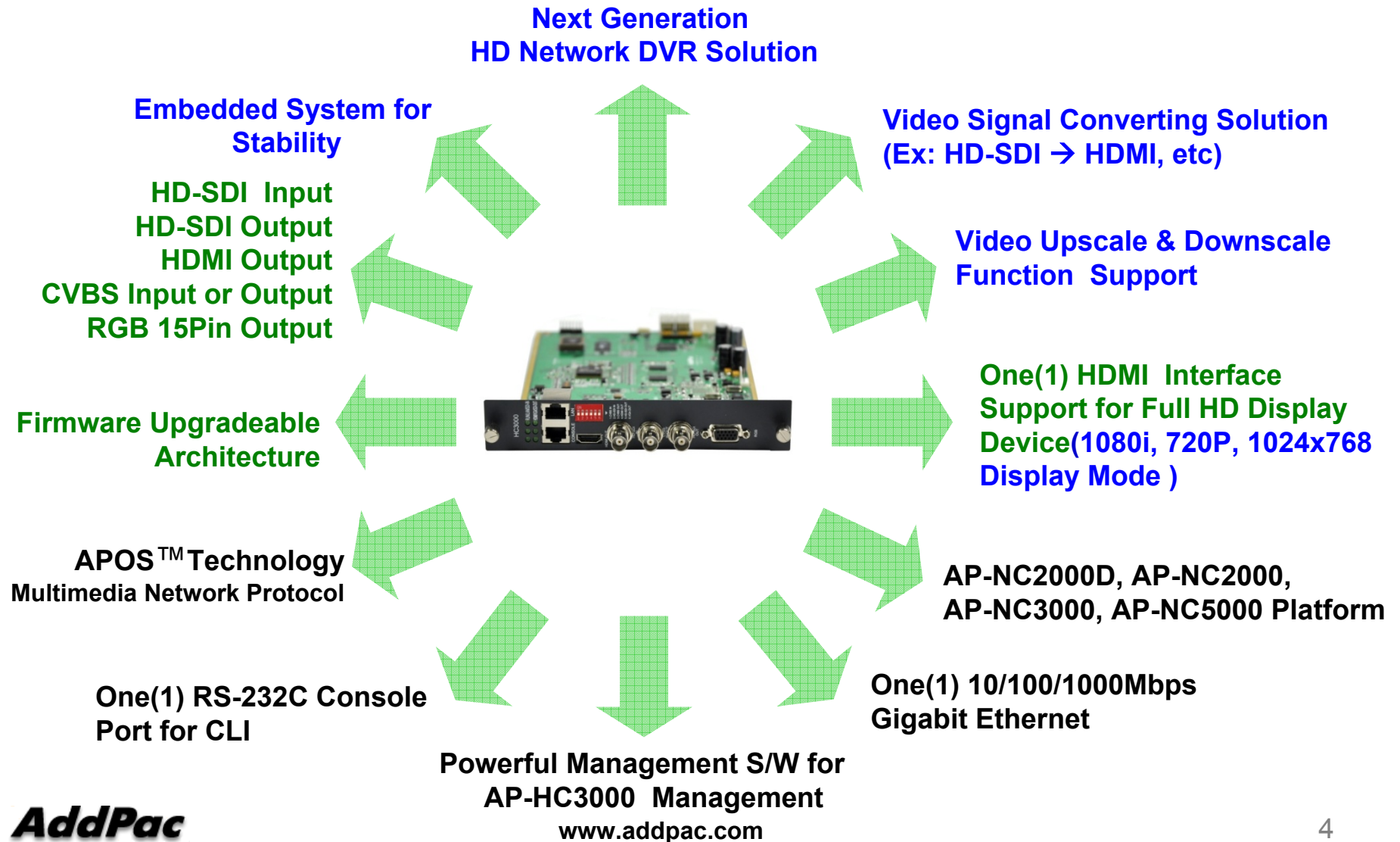
# Product Overview

## AP-HC3000 HD Video Signal Converter Module

- Video Signal Converting Service Features
- CVBS Analog Video Signal Input or Output Port
- RGB 15 Pin VGA Signal Output Port
- HD-SDI Input Port
- HD-SDI Output Port
- One(1) Channel HDMI Output for HDTV Display (Full HD, Upscaling)
- IP based Network Surveillance Solution
- High-performance Video, Audio, and Voice Service
- Firmware Upgradeable Architecture
- Video Solution with Outstanding Network Service Capability
- AP-NC2000D, AP-NC2000, AP-NC3000, AP-NC5000 Platform Available

# Product Highlights

## AP-HC3000 HD Video Signal Converter Module



# Hardware Specification

## AP-HC3000 HD Video Signal Converter Module

RISC  
CPU

High-End  
VP

- **RISC + Video Processor Computing Power**
- **AP-HC3000 Video Module**
  - Network Interface
    - One(1) 10/100/1000Mbps Gigabit Ethernet
  - Video Interface
    - One(1) Channel HD-SDI Input
    - One(1) Channel HD-SDI Output
    - One(1) Channel CVBS Input or Output (selected by DIP Switch)
    - One(1) RGB 15 Pin Video Output
    - One(1) HDMI Video Output for External HD Display Device
  - One(1) RS-232 Console Interface (RJ45)

# Hardware Specification

## AP-HC3000 HD Video Signal Converter Module

RISC  
CPU

High-End  
VP

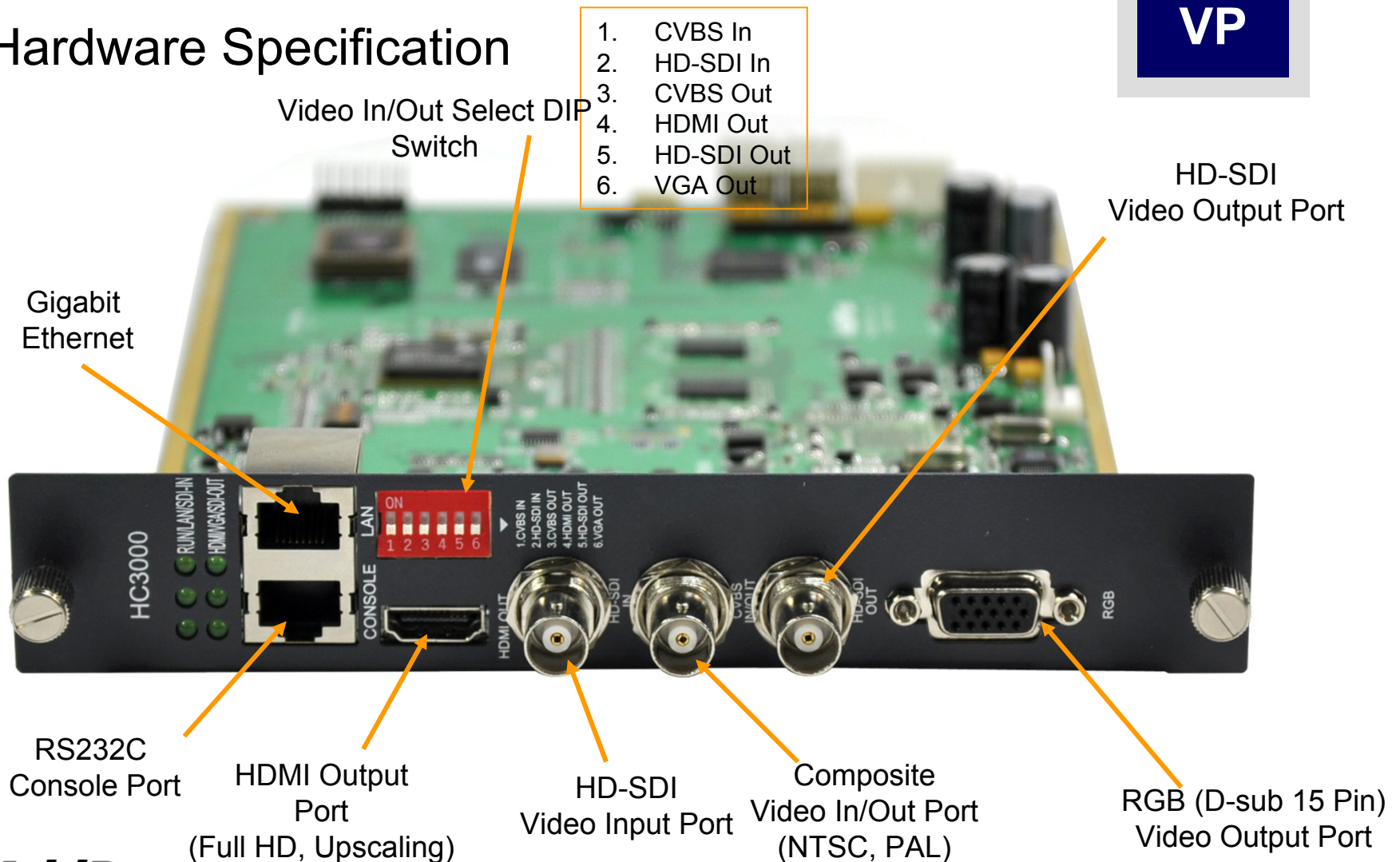
### Hardware Specification

1. CVBS In
2. HD-SDI In
3. CVBS Out
4. HDMI Out
5. HD-SDI Out
6. VGA Out

Video In/Out Select DIP  
Switch

HD-SDI  
Video Output Port

Gigabit  
Ethernet



RS232C  
Console Port

HDMI Output  
Port  
(Full HD, Upscaling)

HD-SDI  
Video Input Port

Composite  
Video In/Out Port  
(NTSC, PAL)

RGB (D-sub 15 Pin)  
Video Output Port

**AddPac**

[www.addpac.com](http://www.addpac.com)

# Hardware Specification

## AP-HC3000 HD Video Signal Converter Module

### Hardware Specification



AP-HC3000 HD VSC Module

AP-NC2000 Front View





# Hardware Specification

## AP-HC3000 HD Video Signal Converter Module

### Hardware Specification



AP-HC3000 HD VSC Module

### AP-NC5000 Front View

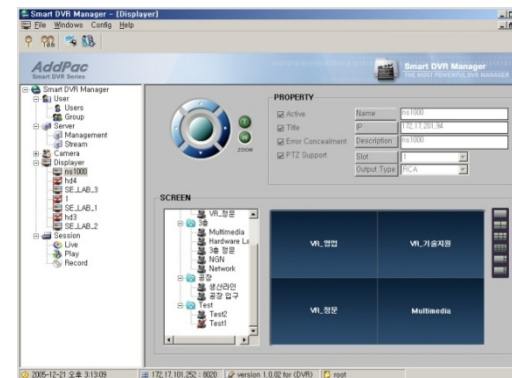
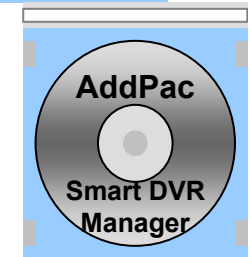
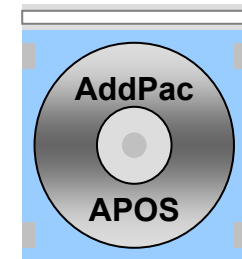




# Software Service

## AP-HC3000 HD Video Signal Converter Module

- **Built-in AddPac APOS Internetworking Software**
  - Scalability, Functionality, and Stability Features
  - Video Signal Converting Service Features
  - Video Upscale and Downscaling Service
- **Firmware Upgradeable Architecture**
- **Industry Standard Network Protocol Features**
- **Highly User Friendly Management Features**
  - Smart DVR Manager
  - Telnet or RS-232C based Command Line Interface



# Video Signal Converting Matrix

## AP-HC3000 HD Video Signal Converter Module

### Video In/Out Signal Converting Matrix

Video Input	Video Output		
Analog Composite Video Input (BNC Connector, NSTC/PAL)	Upscaling	Upscaling	-
	HD-SDI Output (720P,1080i)	HDMI Output (720P, 1080i) 1024x768 for DVI Monitor	RGB Output (VGA)
HD-SDI Video Input (720P, 1080i)	Downscaling	Upscaling	Downscaling
	Analog Video Output (NTSC,PAL)	HDMI Output (720P, 1080i) 1024x768 for DVI Monitor	RGB Output (VGA)

# Network Service and Features

## AP-HC3000 HD Video Signal Converter Module

### Basic Network Protocols

- ARP, IPv4, TCP, UDP, ICMP, SCTP, IGMP, MLD

### Routing Protocol

- IPv4 : Static

### Service Protocol

- FTP, Telnet, TFTP, DHCP Server/Relay, SNMP Server
- CDP (Cisco Discovery Protocol)
- DNS Resolver , DDNS(nsupdate)
- Bridge
- Syslog

### IPv4 Address Configuration

- Fixed (Static)
- DHCP
- PPPoE

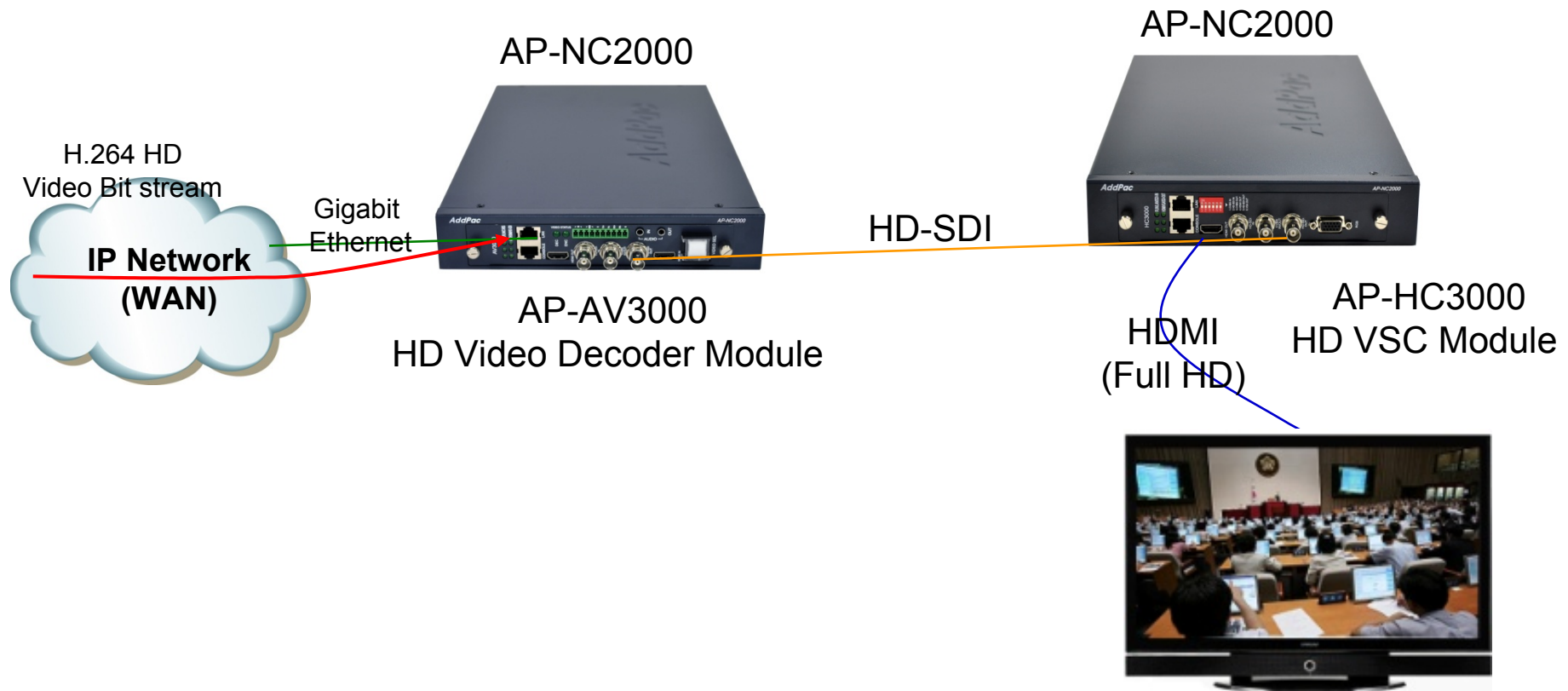
### Miscellaneous

- Standard & Extended IPv4 Access List
- Multi-level User Account Management
- IP accounting

# Network Application Diagram (example)

## AP-HC3000 HD Video Signal Converter Module

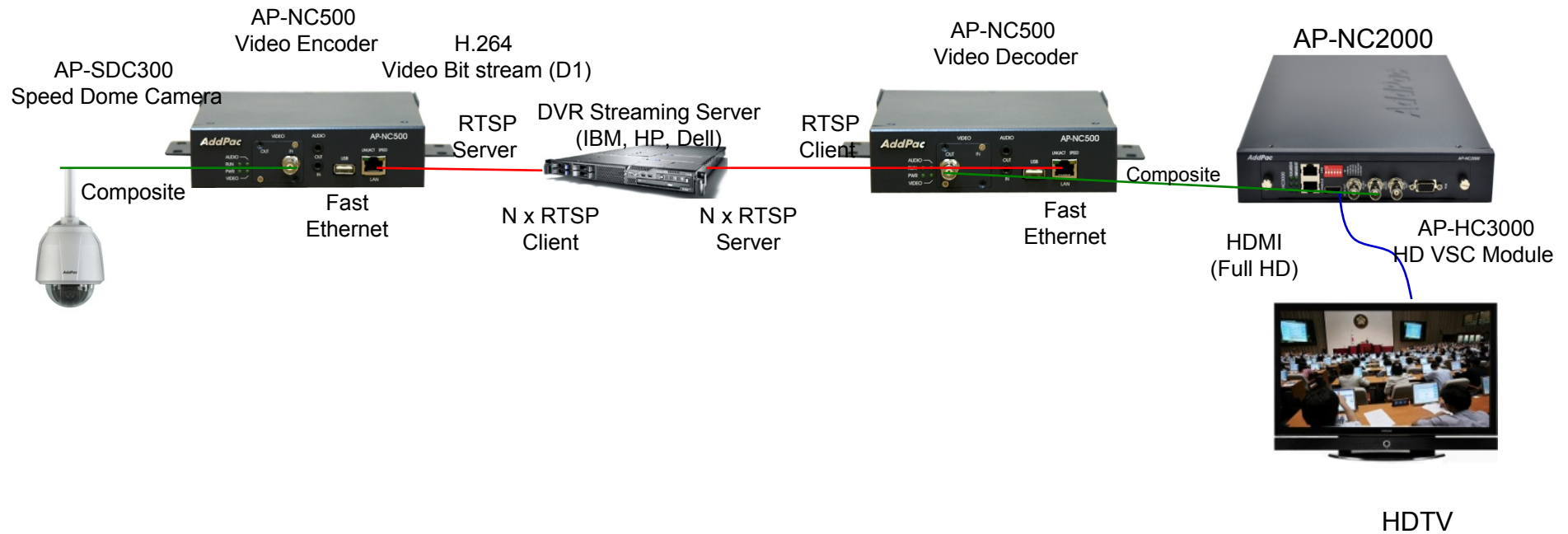
HD Video Signal Converting Service Diagram  
: HD-SDI(720P) Input → HDMI(1080i Full HD) Output



# Network Application Diagram (example)

## AP-HC3000 HD Video Signal Converter Module

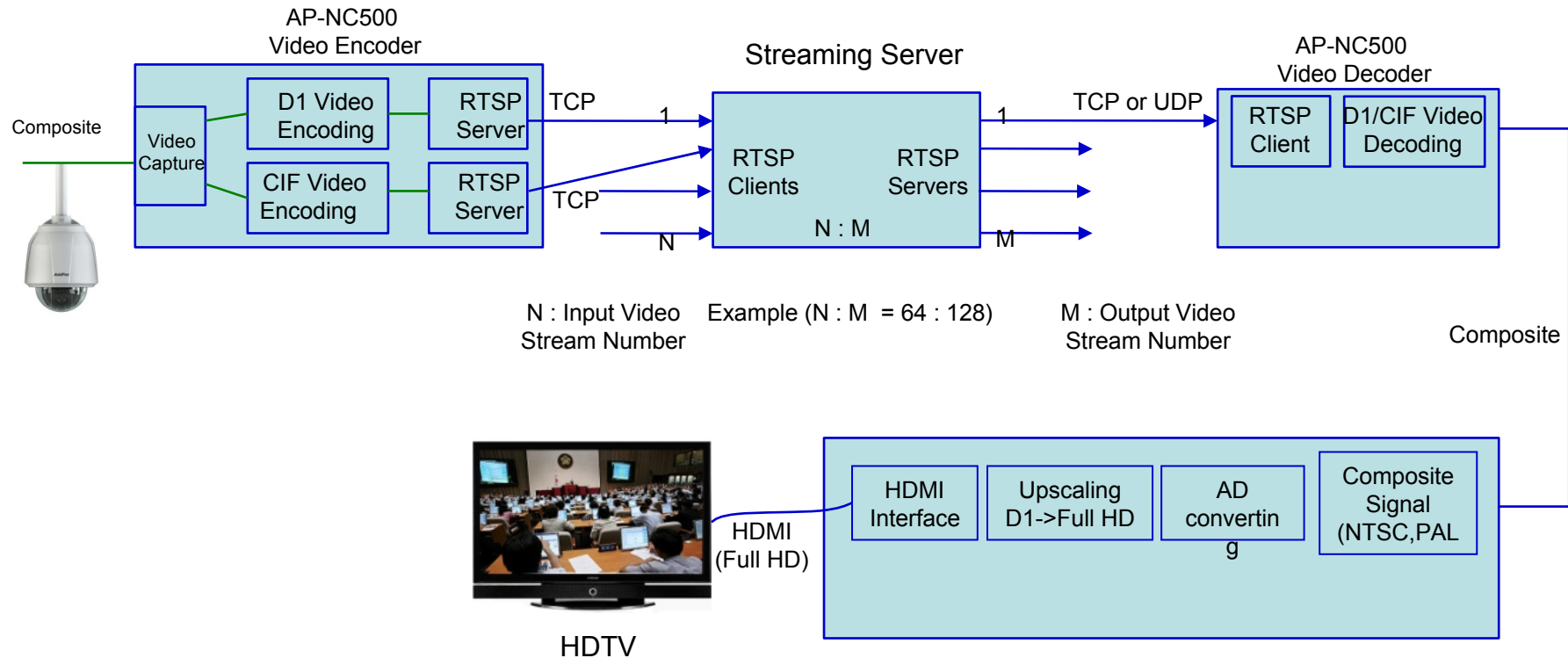
### Video Signal Converting Service Diagram : Composite(D1) Input-→HDMI(1080i Full HD) Output



# Network Application Diagram (example)

## AP-HC3000 HD Video Signal Converter Module

### Video Signal Converting Service Diagram : Composite(D1) Input -> HDMI(1080i Full HD) Output



# Ordering Information

- **AP-HC3000 HD Video Signal Converter Module Hardware**
  - Main Chassis (Option) : AP-NC2000D, AP-NC2000, AP-NC3000, AP-NC5000
  - AP-HC3000 HD VSC Module
  - Including Network Cable Set & Power Supply Cable, etc
- **Built-in APOS Internetworking Software for AP-HC3000 Module**
- **Including 1 Year Hardware Warranty**
- **Product Documents**
  - Install and Operation Guide (PDF)
- **Pricing**
  - AddPac Technology Regional Sales Manager
  - Authorized Sales and Marketing Representatives
  - Please Contact [www.addpac.com](http://www.addpac.com)





# Thank you!

**AddPac Technology Co., Ltd.**  
Sales and Marketing

Phone +82.2.568.3848 (KOREA)

FAX +82.2.568.3847 (KOREA)

E-mail [sales@addpac.com](mailto:sales@addpac.com)