

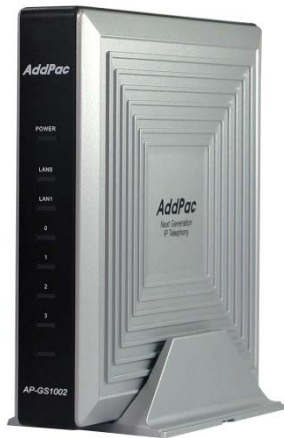


# AP-GS1002™

## 2-Port GSM Gateway

High-performance GSM Gateway Solution

New Models for VoIP  
Interface Extension



# **AddPac**

**AddPac Technology**

2011, Sales and Marketing

[www.addpac.com](http://www.addpac.com)

# Contents

- AP-GS1002 Product Overview
- AP-GS1002 Model B,C H/W Specification
- AP-GS1002 Model B,C Network Diagram



AP-GS1002

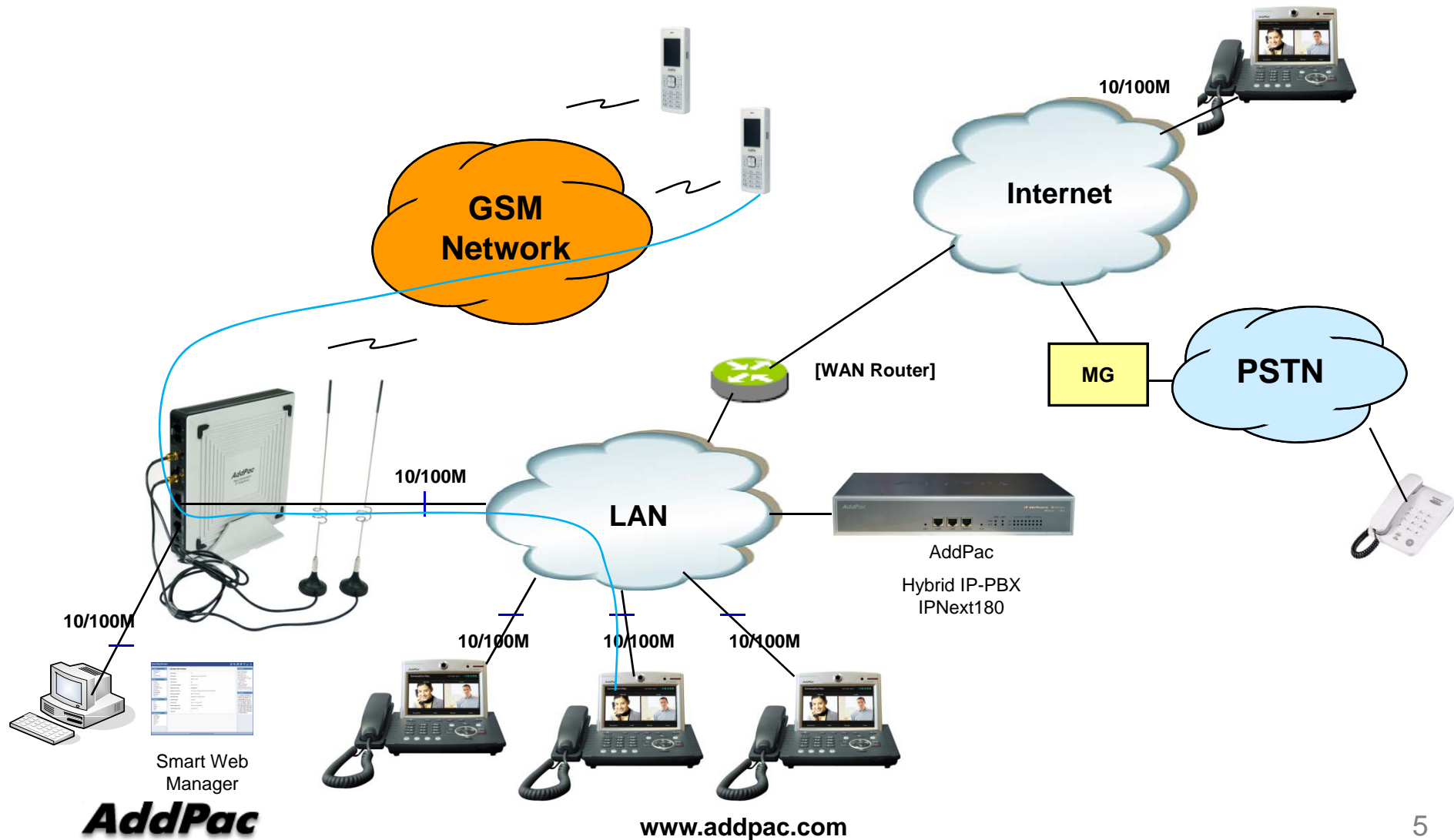
# Product Overview

- 2-Port GSM Interface (Antenna, Slots for SIM card)
- PSTN Interface/VoIP Interface(LAN) Both Support
- FXS, FXO Analog Interface Support
- H.323/SIP/MGCP Triple Concurrent Stack Embedded
- High Performance RISC & Programmable DSP Architecture
- Two(2) 10/100Mbps Fast Ethernet (IP Share ,etc)
- High Performance LAN-to-LAN Routing Capability
- G.711/G.726/G.723/G.729, T.38 Fax , VAD, etc
- Powerful Network Protocols (PPPoE, DHCP, Static Routing, etc)
- Firmware Upgradeable Architecture
- VPMS (VoIP Plug&Play Management System) for Large Scale Deployment
- Advanced Voice QoS Mechanism
- Light and Compact Design with External Power Supply

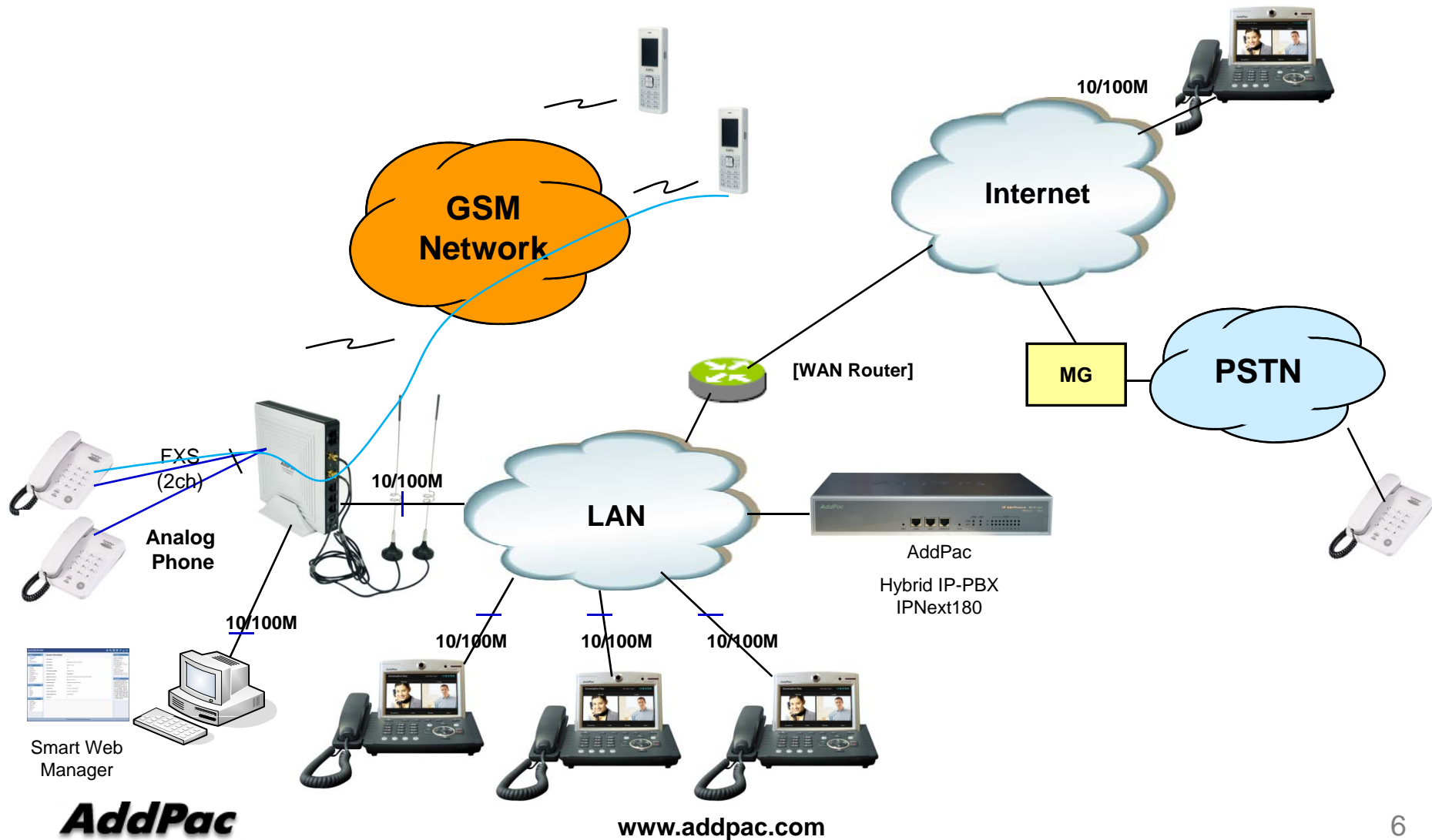
# AP-GS1002 New Model

- AP-GS1002 Embedded Platform
- Voice Interface
  - No Analog Interface (Model A)
  - FXS 2ch Model (Model B)
  - FXO 2ch Model (**Model C**) : New Model
- RISC Microprocessor Computing Power
- Audio Codec
  - G.711, G.726, G.729, G.723.1
- Main Chassis
  - One(1) RS-232C Console (RJ45) for CLI
  - 2-Port SIM Card Slots
  - 2-Port GSM Antenna Interface
  - Two(2) Fast Ethernet Port
  - External Power Adaptor

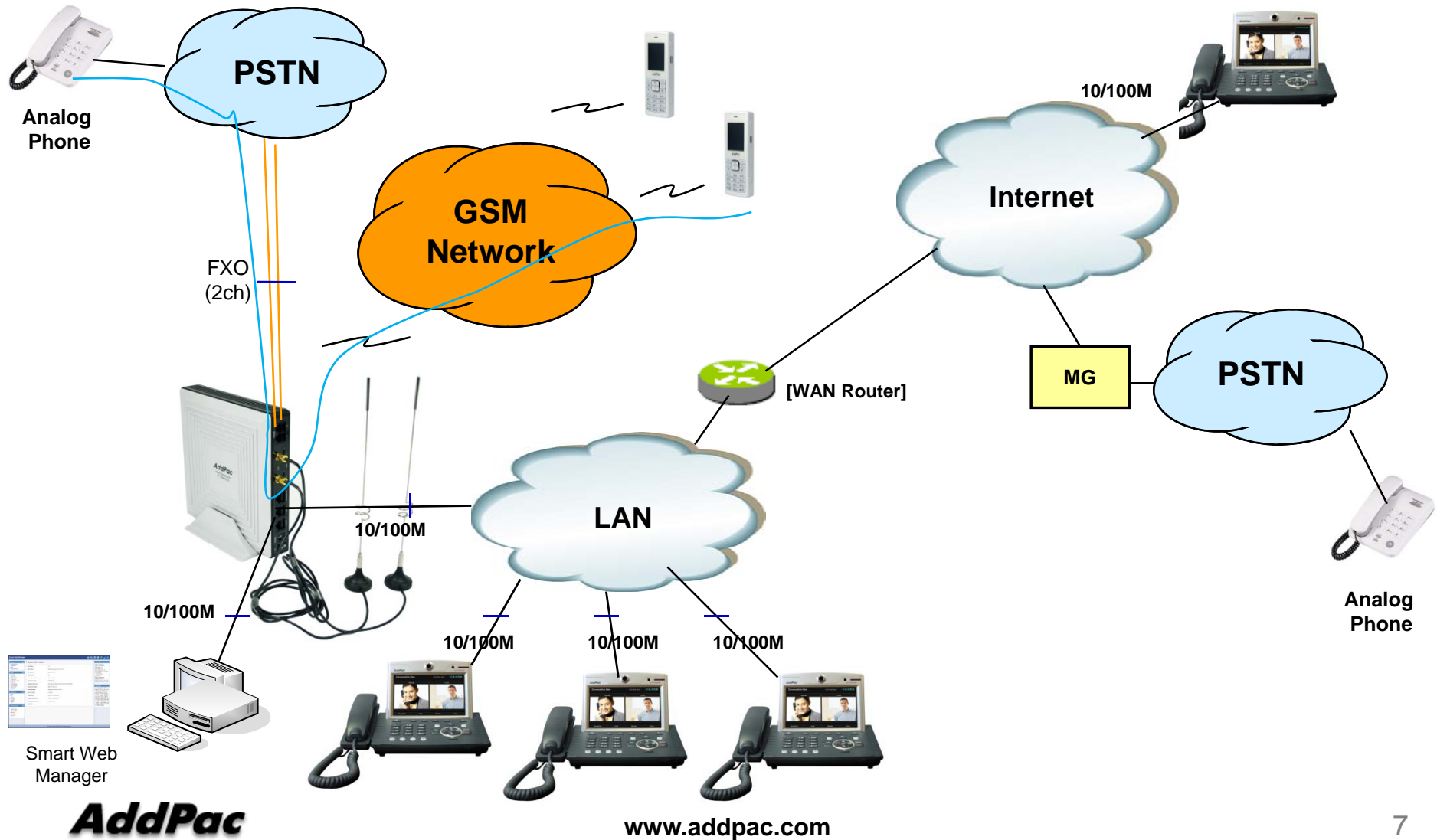
# AP-GS1002(Model A) Network Diagram



# AP-GS1002(Model B) Network Diagram



# AP-GS1002(Model C) Network Diagram





# Thank you!

**AddPac Technology Co., Ltd.**  
Sales and Marketing

Phone +82.2.568.3848 (KOREA)

FAX +82.2.568.3847 (KOREA)

E-mail [sales@addpac.com](mailto:sales@addpac.com)