

# Emergency Call IP Phone Solution



AP-EIP100



AP-EIP80



AP-EIP50

**AddPac**

**AddPac Technology**

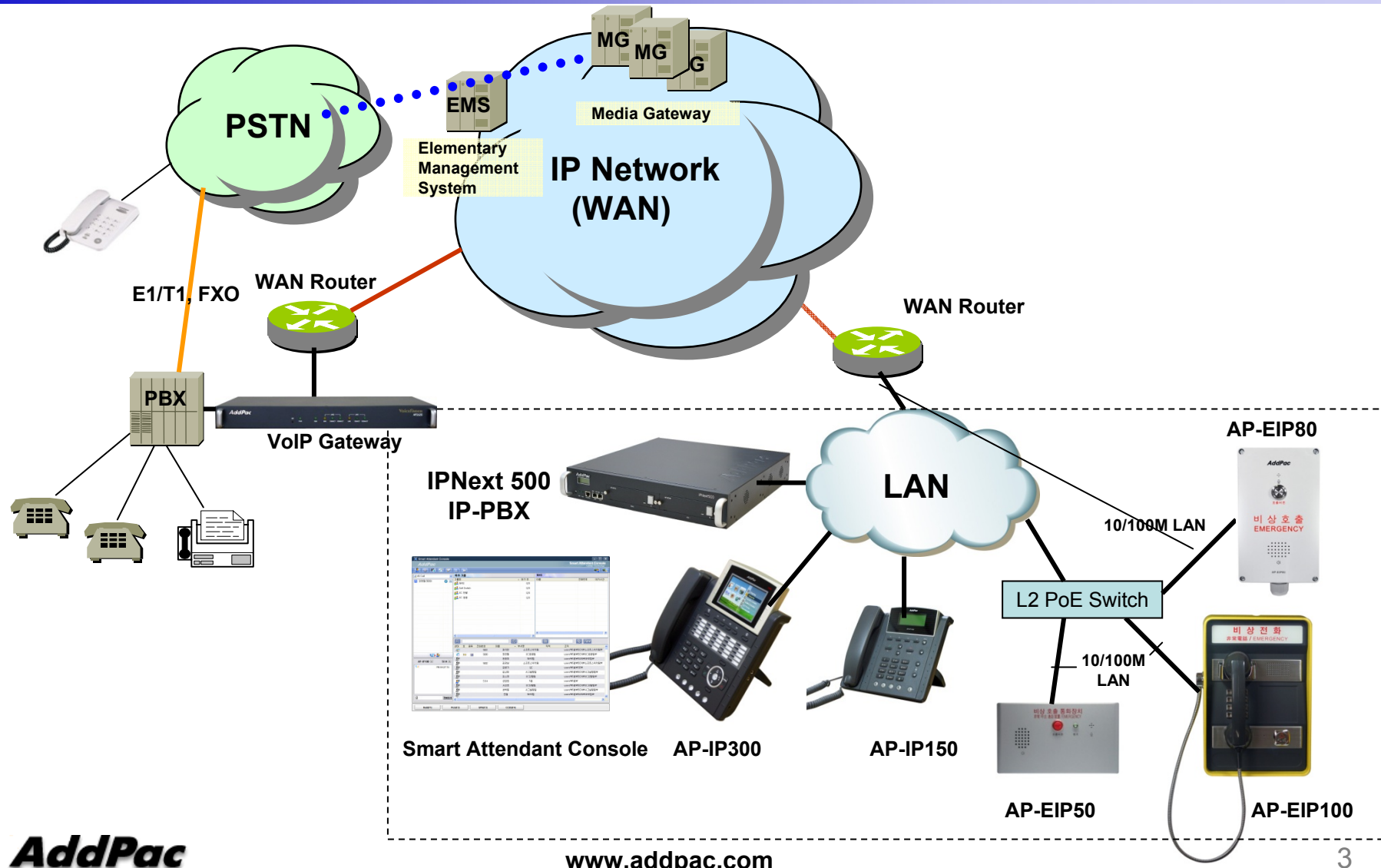
2010, Sales and Marketing

[www.addpac.com](http://www.addpac.com)




# Contents

- Emergency Call IP Phone Service Diagram
- Emergency Call IP Phone Comparison Table
- Emergency Call IP Phone Series
  - AP-EIP100
  - AP-EIP80
  - AP-EIP50
- NMS (Network Management System) for Emergency Call IP Phone

# Emergency Call IP Phone Service Diagram



# Emergency Call IP Phone Comparison Table

Model	AP-EIP100	AP-EIP80	AP-EIP50
Service Features			
Duplex	Full Duplex	Full Duplex	Full Duplex
Key Pad	3x4 Key Support	N/A	N/A
Handset	Support	N/A	N/A
Voice Codec	G.711/G.726/ G.729/G.723	G.711/G.726/ G.729/G.723	G.711/G.726/ G.729/G.723
Signaling	H.323/SIP	H.323/SIP	H.323/SIP
Speaker Phone	Support	Support	Support
LAN Port	1	1	1
PoE(Optional)	Support	Support	Support
Application	Indoor	Outdoor(water proof)	Indoor



# AP-EIP100 Emergency Call IP Phone

# Main Features

## AP-EIP100 Emergency Call IP Phone

### Main Features

- High Performance Emergency Call IP Phone Solution
- Emergency Call Button & Speaker Phone
- 3x4 Key, Handset, Internal MIC & Speaker
- H.323/SIP Concurrent VoIP Signaling Stack Embedded
- High-performance Voice Codec Support
  - G.711/G.726/G.729/G.723, etc
- One(1) 10/100Mbps Fast Ethernet
- PoE(Power over Ethernet) Support
- High Quality Speaker Phone Features
- Powerful Acoustic Echo Canceller
- Powerful Network Protocols (PPPoE, DHCP, Static Routing, etc)
- Firmware Upgradeable Architecture
- NMS (Network Management System) for Large Scale Deployment
- Advanced Voice QoS Mechanism

# Hardware Specification

AP-EIP100 Emergency Call IP Phone

RISC  
CPU

High-end  
DSP

- **RISC+DSP Microprocessor Computing Power (Dual Processor Architecture)**
- **Audio and Voice Interface**
  - Internal MIC
  - Internal Speaker
  - Hand Set, On/Off Hook
  - 3 x 4 keyPAD
- **Emergency Call Button**
- **Network Interface**
  - One(1) 10/100Mbps Fast Ethernet
- **Power Supply**
  - Power over Ethernet

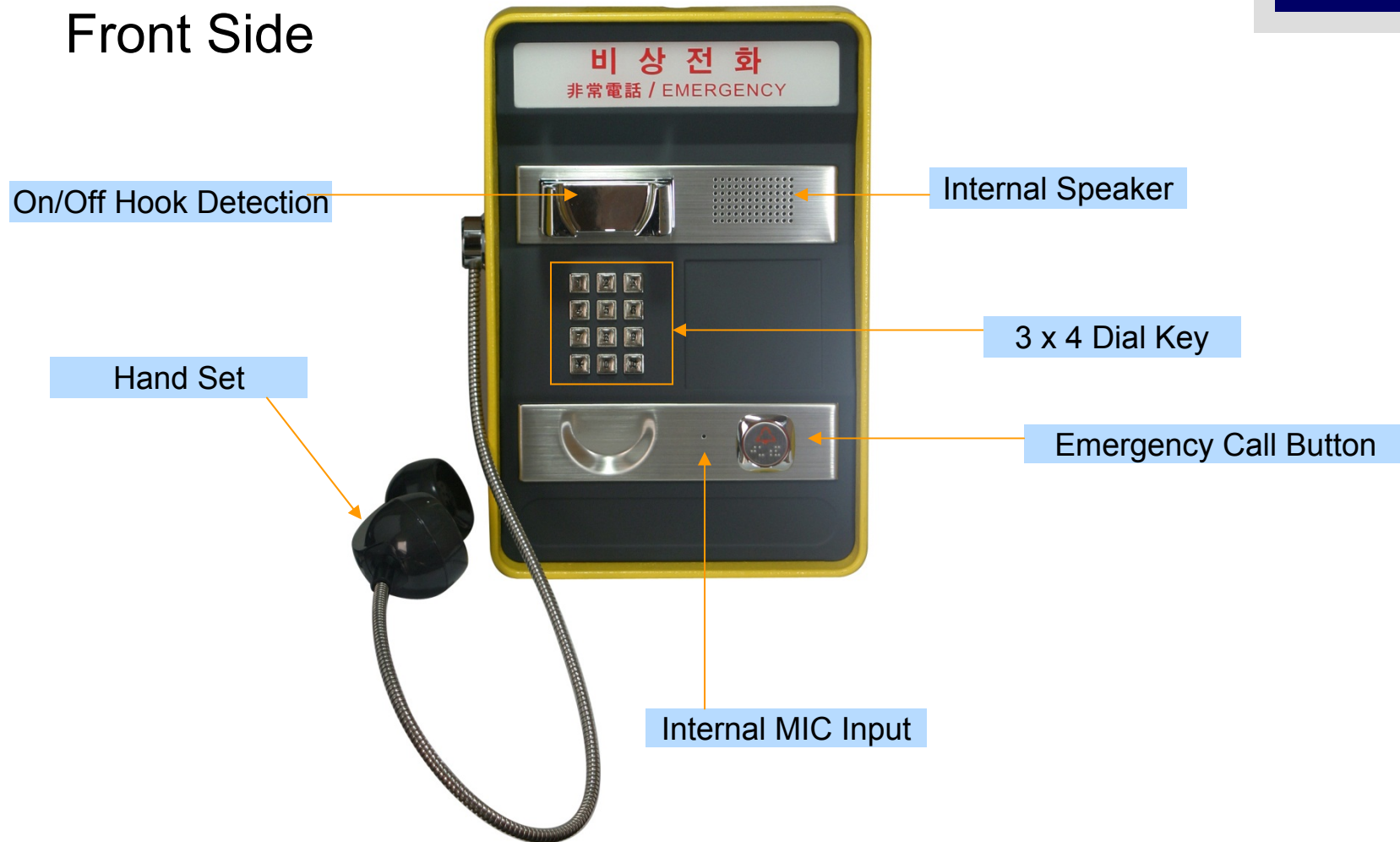
# Hardware Specification

AP-EIP100 Emergency Call IP Phone

RISC  
CPU

High-end  
DSP

## Front Side





# Hardware Specification

AP-EIP100 Emergency Call IP Phone

RISC  
CPU

High-end  
DSP

Bottom Side



Outlet for LAN cable





# AP-EIP80 Emergency Call IP Phone

# Main Features

## AP-EIP80 Emergency Call IP Phone

### Main Features

- Emergency IP Phone Solution for Outdoor Application
- Emergency Call Button & Speaker Phone
- Water Proof Function Support
- H.323/SIP Concurrent VoIP Signaling Stack Embedded
- High-performance Voice Codec Support
  - G.711/G.726/G.729/G.723, etc
- One(1) 10/100Mbps Fast Ethernet
- PoE(Power over Ethernet) Support
- High Quality Speaker Phone Features
- Powerful Acoustic Echo Canceller
- Powerful Network Protocols (PPPoE, DHCP, Static Routing, etc)
- Firmware Upgradeable Architecture
- NMS (Network Management System) for Large Scale Deployment
- Advanced Voice QoS Mechanism

# Hardware Specification

AP-EIP80 Emergency Call IP Phone

RISC  
CPU

High-end  
DSP

- **RISC+DSP Microprocessor Computing Power (Dual Processor Architecture)**
- **Audio and Voice Interface**
  - Internal MIC
  - Internal Speaker
- **Emergency Call Button & LAMP**
- **Network Interface**
  - One(1) 10/100Mbps Fast Ethernet
- **Power Supply**
  - Power over Ethernet

# Hardware Specification

AP-EIP80 Emergency Call IP Phone

RISC  
CPU

High-end  
DSP

## Front Side



Internal MIC Input

Emergency Call Button with LED

Internal Speaker

Stainless Steel Cover for Water Protect



LAN Cable Inlet for water Proof



# AP-EIP50 Emergency Call IP Phone

# Main Features

## AP-EIP50 Emergency Call IP Phone

### Main Features

- Emergency IP Phone Solution
- Emergency Call Button & Speaker Phone
- H.323/SIP Concurrent VoIP Signaling Stack Embedded
- High-performance Voice Codec Support
  - G.711/G.726/G.729/G.723, etc
- One(1) 10/100Mbps Fast Ethernet
- PoE(Power over Ethernet) Support
- High Quality Speaker Phone Features
- Powerful Acoustic Echo Canceller
- Powerful Network Protocols (PPPoE, DHCP, Static Routing, etc)
- Firmware Upgradeable Architecture
- NMS (Network Management System) for Large Scale Deployment
- Advanced Voice QoS Mechanism

# Hardware Specification

AP-EIP50 Emergency Call IP Phone

RISC  
CPU

High-end  
DSP

- **RISC+DSP Microprocessor Computing Power (Dual Processor Architecture)**
- **Audio and Voice Interface**
  - Internal MIC
  - Internal Speaker
- **Emergency Call Button & LAMP**
- **Network Interface**
  - One(1) 10/100Mbps Fast Ethernet
- **Power Supply**
  - Power over Ethernet



# Hardware Specification

## AP-EIP50 Emergency Call IP Phone

RISC  
CPU

High-end  
DSP

### Hardware Specifications

AP-EIP50 IP Phone	Basic Specifications
<b>CPU</b>	RISC+ DSP Microprocessor
<b>Ethernet Interface</b>	1-Ports 10/100Mbps Ethernet Interface(RJ-45)
<b>Flash Memory</b>	4Mbyte High-speed Flash Memory
<b>Base Memory</b>	16Mbyte High-speed SDRAM
<b>Power Requirement</b>	Power over Ethernet
<b>Operating Temperature</b>	0°C ~ 45°C (32 °F ~ 122°F)
<b>Storage Temperature</b>	-40°C ~ 85°C (-40°C ~ 185°F)
<b>Relative Humidity</b>	5% ~ 95% (Non-condensing)
<b>Dimensions</b>	200mm x 115mm x 34mm (W x H x D)
<b>Weight (g)</b>	0.85Kg



Front Side

Internal MIC Input

Emergency Call Button

Internal Speaker

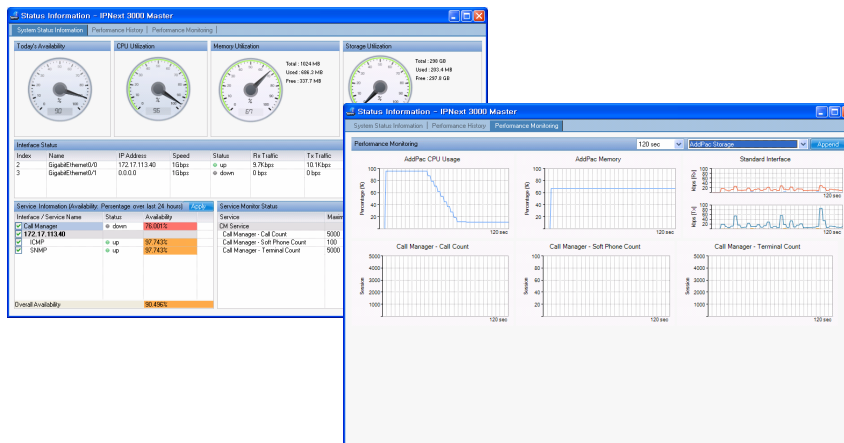
Bottom Side



Outlet for LAN cable

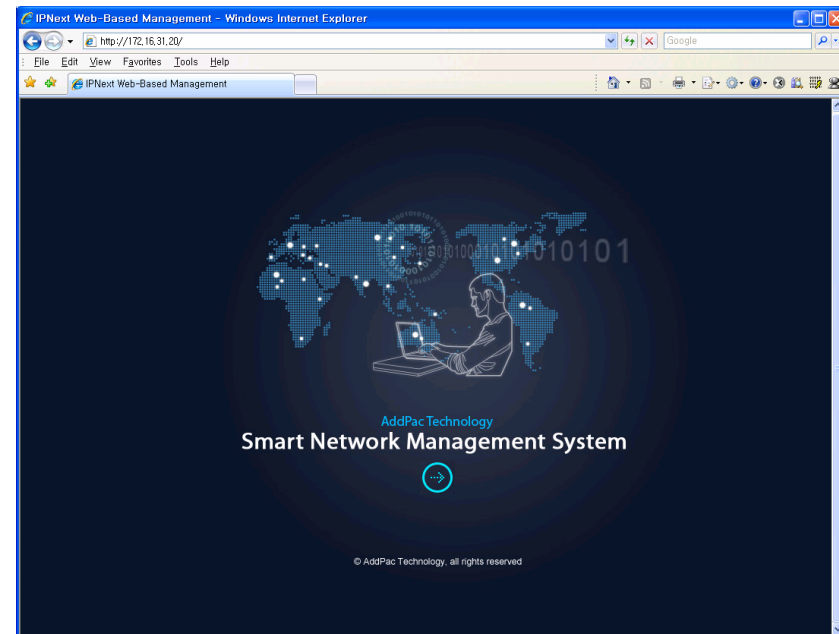
# Smart NMS

## Smart Network Management System for Video Phone



# Contents

- System Requirement
- Smart NMS Networking Diagram
- Web-based Management
- Network Resource Management
- Device Fault Management
- Device Fault History Management
- Device Status Information
- Notification Management
- Fault Statistics
- Model & Service Management



# System Requirement

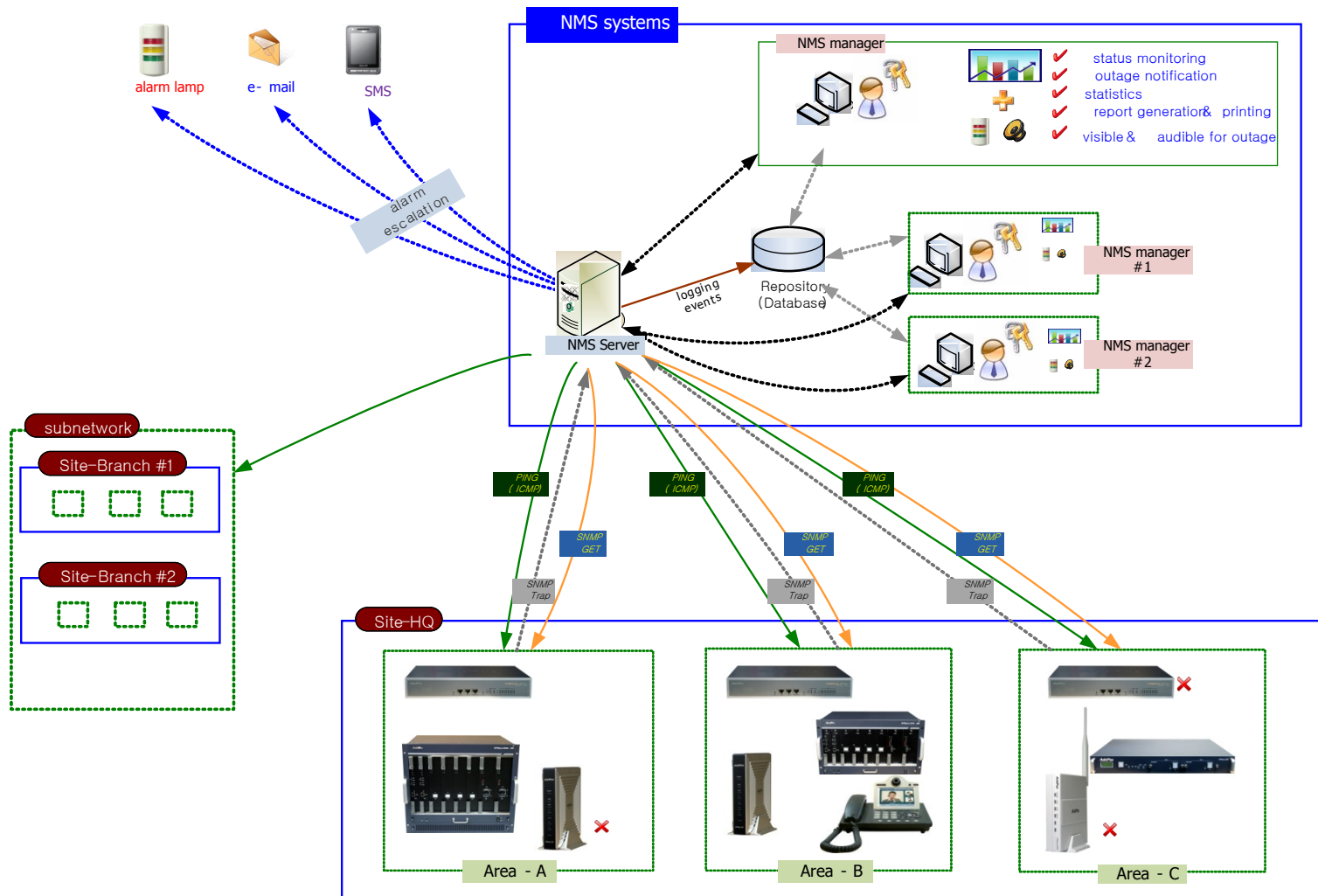
## NMS Server

- OS : RHEL (Redhat Enterprise Linux) 5.0 or higher
- CPU : Quad-Core 2.0 GHz / 1333MHz FSB 2x4 MB cache
- Physical Memory : 4 GB
- HDD : 300 G
- JRE (Java Runtime Environment) 1.5.1 or Higher
- Database : PostgreSQL 8.1.11

## NMS Client

- Windows XP, Vista, Windows Server 2000/2003
- Microsoft Internet Explorer 6.0 or higher

# NMS Networking Diagram



# Ex: Device Fault Management

Smart Network Management System - Windows Internet Explorer

http://172.16.31.20/smartnms.htm

NMS Account Configuration Monitoring Notification Fault Statistics View Help

Current Outage Devices (12) Site

Service Outages Device Monitoring - <All>

View Mode Large Small Refresh Import

display message icon when the device have a notification for event

device status matrix with several severity such as critical, major, minor

\* severity color  
 1) red : critical  
 2) orange : major  
 3) light blue : normal

Total Monitoring Devices : 34

PK	ID	Send Time	Site	Device Name	IP Address	Service	Message
9525		4/10/2009 5:21:06 PM	/AddPac/Branch GX	00_NR_server	172.17.111.21	SNMP	인터페이스 172.17.111.21 (172.17.111.21)의 장비명(00_NR_server)의 서비스 SNMP가 2009년 4월 10일 금요일 오후 5시 21분 06초에 실패함.
9502		4/10/2009 3:34:29 PM	/Subnetwork.#2/Center	NMS_SOHO_PBX			device NMS_SOHO_PBX, all services are down
9495		4/10/2009 11:37:12 AM	/AddPac/Branch GX	IPNext 3000 Slave	172.17.113.41	Call Manager	interface 172.17.113.41 (172.17.113.41) device (IPNext 3000 Slave) service Call Manager 2009-4-10 11:37:12 failed.
9494		4/10/2009 11:37:12 AM	/AddPac/Branch GX	IPNext 3000 Master	172.17.113.40	Call Manager	interface 172.17.113.40 (172.17.113.40) device (IPNext 3000 Master) service Call Manager 2009-4-10 11:37:12 failed.
9418		4/9/2009 2:20:01 PM	/AddPac/Branch GX	00_IVR_server			device 00_IVR_server all services are down

4/10/2009 5:16:30 PM 172.16.31.20:5101 admin Version 1.2.3384

# Emergency Call IP Phone Series

# Thank you!

**AddPac Technology Co., Ltd.**  
Sales and Marketing

Phone +82.2.568.3848 (KOREA)

FAX +82.2.568.3847 (KOREA)

E-mail : [sales@addpac.com](mailto:sales@addpac.com)