

# AP-EIP100™

## Emergency IP Phone

High Performance Emergency IP Phone Solution

### Preliminary Product Overview

(Without notice, following described technical spec. can be changed)



# **AddPac**

**AddPac Technology**

2009, Sales and Marketing

[www.addpac.com](http://www.addpac.com)

# Contents

## AP-EIP100 Emergency IP Phone

- Product Overview
- Hardware Specification
- Software Service
- Audio & Voice Service and Features
- Network Service and Features
- Application Area
- Ordering Information



# Product Overview

AP-EIP100 Emergency IP Phone

- Emergency IP Phone Solution
- High-performance Audio, and Voice Service
- Firmware Upgradeable Architecture
- VoIP Solution with Outstanding Network Service Capability
- Audio Privacy Protection

# Product Highlights

AP-EIP100 Emergency IP Phone

## High Performance Emergency IP Phone Solution

Emergency Button & Speaker Phone

Internal MIC & SPEAKER  
3x4 Key PAD, Hand Set

Excellent Voice Quality  
G726/711/G.729/G.723 etc  
High Quality Speaker Phone  
& Sound

High Performance RISC CPU  
(Embedded DSP for Codec)

Full Duplex,  
Acoustic Echo Canceller

Various Call Control  
Scenario Support (IP-PBX)

APOS™ Technology  
Network Protocol

State-of-art Signaling  
SIP Stack

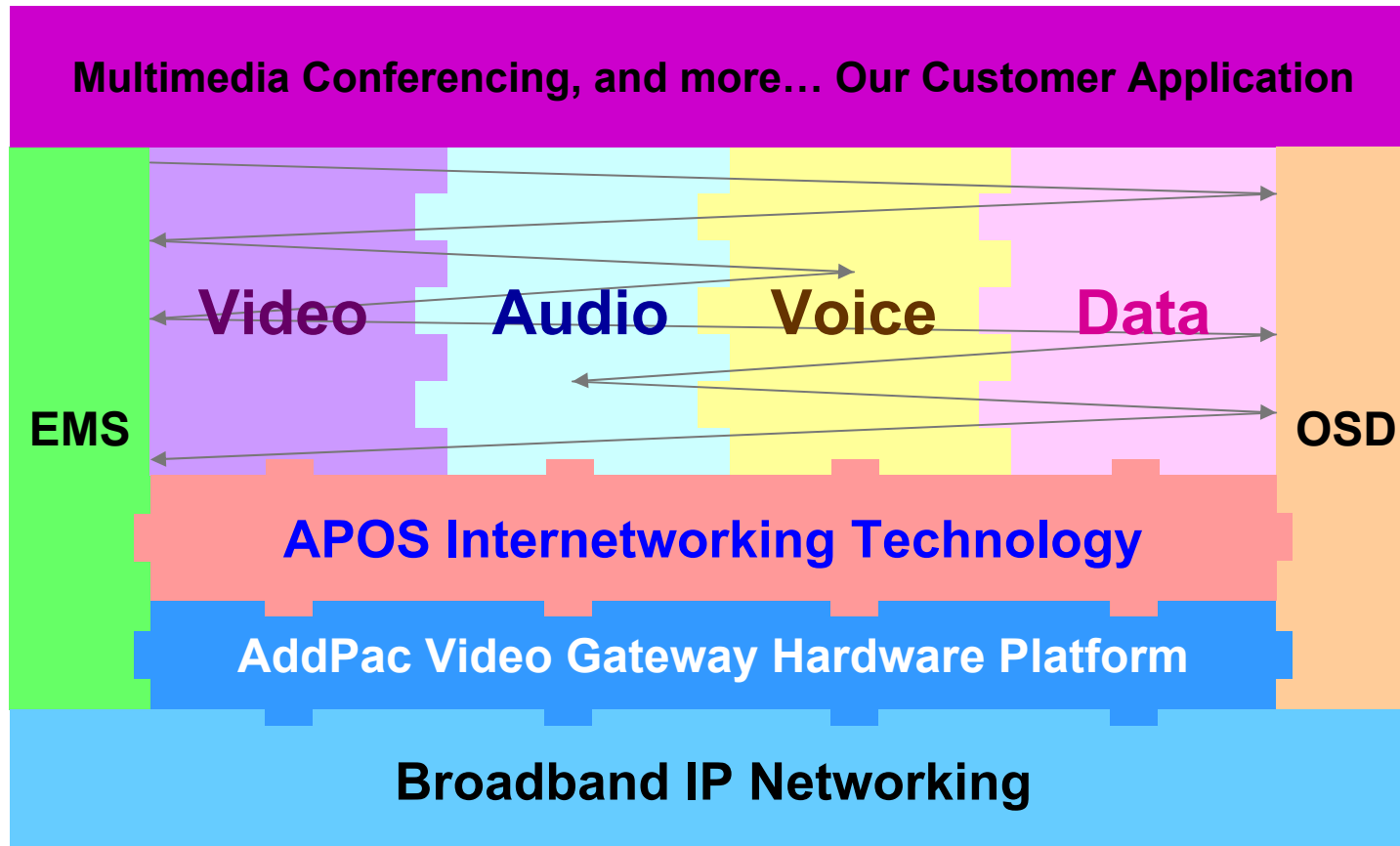
IP based Network Protocol  
& Video/Voice Traffic QoS

Broadband IP Networking  
With a 10/100Mbps Ethernet

Power over Ethernet Support

# Multimedia Service

AP-EIP100 Emergency IP Phone



- APOS : AddPac Internetworking Operating System
- OSD : On- Screen Display
- EMS : Element Management System

# Hardware Specification

## AP-EIP100 Emergency IP Phone

- **RISC+DSP Microprocessor Computing Power (Dual Processor Architecture)**
- **Audio and Voice Interface**
  - Internal MIC
  - Internal Speaker
  - Hand Set, On/Off Hook
  - 3 x 4 keyPAD
- **Emergency Call Button**
- **Network Interface**
  - One(1) 10/100Mbps Fast Ethernet
- **Power Supply**
  - Power over Ethernet

# Hardware Specification

## AP-EIP100 Emergency IP Phone

### Hardware Specifications

| AP-EIP50 IP Phone     | Basic Specifications                         |
|-----------------------|--|
| CPU                   | RISC+ DSP Microprocessor                     |
| Ethernet Interface    | 1-Ports 10/100Mbps Ethernet Interface(RJ-45) |
| Flash Memory          | 4Mbyte High-speed Flash Memory               |
| Base Memory           | 16Mbyte High-speed SDRAM                     |
| Power Requirement     | Power over Ethernet, 10Watt (5V 2A)          |
| Operating Temperature | 0°C ~ 45°C (32 °F ~ 122°F)                   |
| Storage Temperature   | -40°C ~ 85°C (-40°C ~ 185°F)                 |
| Relative Humidity     | 5% ~ 95% (Non-condensing)                    |
| Dimensions            | 235mm x 350mm x 80mm (W x H x D)             |
| Weight (g)            | 4.3 Kg                                       |



# Hardware Specification

AP-EIP100 Emergency IP Phone

Front Side

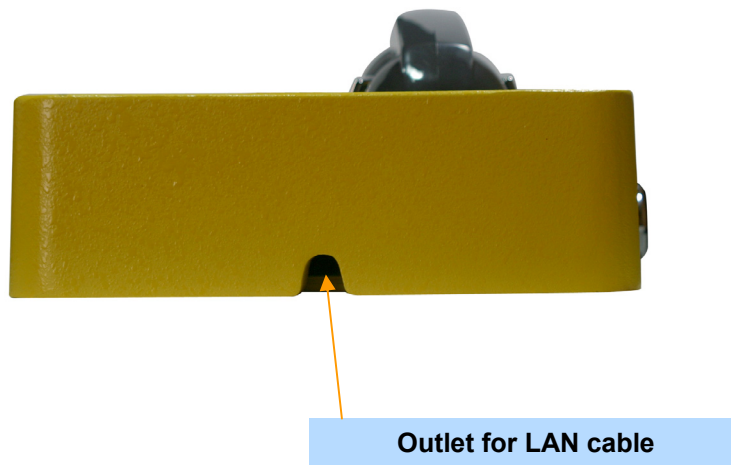




# Hardware Specification

AP-EIP100 Emergency IP Phone

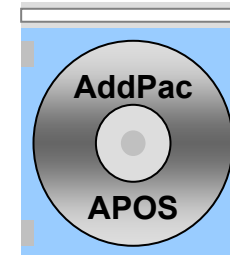
Bottom Side



# Software Service

AP-EIP100 Emergency IP Phone

- **Built-in AddPac APOS Internetworking Software**
  - Scalability, Functionality, and Stability Features
  - Audio Traffic QoS Control
- **Programmable Video, Audio, and Voice Services**
  - Audio, and Voice Codec
- **Firmware Upgradeable Architecture**
- **Industry Standard IP based Network Protocol Features**



# Network Service and Features

## AP-EIP100 Emergency IP Phone

- **Network Managements**
  - Standard SNMP Agent (MIB v2) Support
  - Remote Management using Console, Telnet
  - Web based Management using HTTP Server Interface
- **Security Functions**
  - Standard & Extended IP Access List
  - Enable/Disable for Specific Network Protocols
  - Multi-level User Account Management
  - Auto-disconnect for Telnet/Console Sessions
  - PPP User Authentication Supports (PAP & CHAP)
- **Operation & Managements**
  - System Performance Analysis for Process, CPU, Connection Interface
  - Debugging, System Auditing, and Diagnostics Support
  - System Booting and Auto-rebooting with Watchdog Feature
  - System Managements with Data Logging
  - IP Traffic Statistics with Accounting

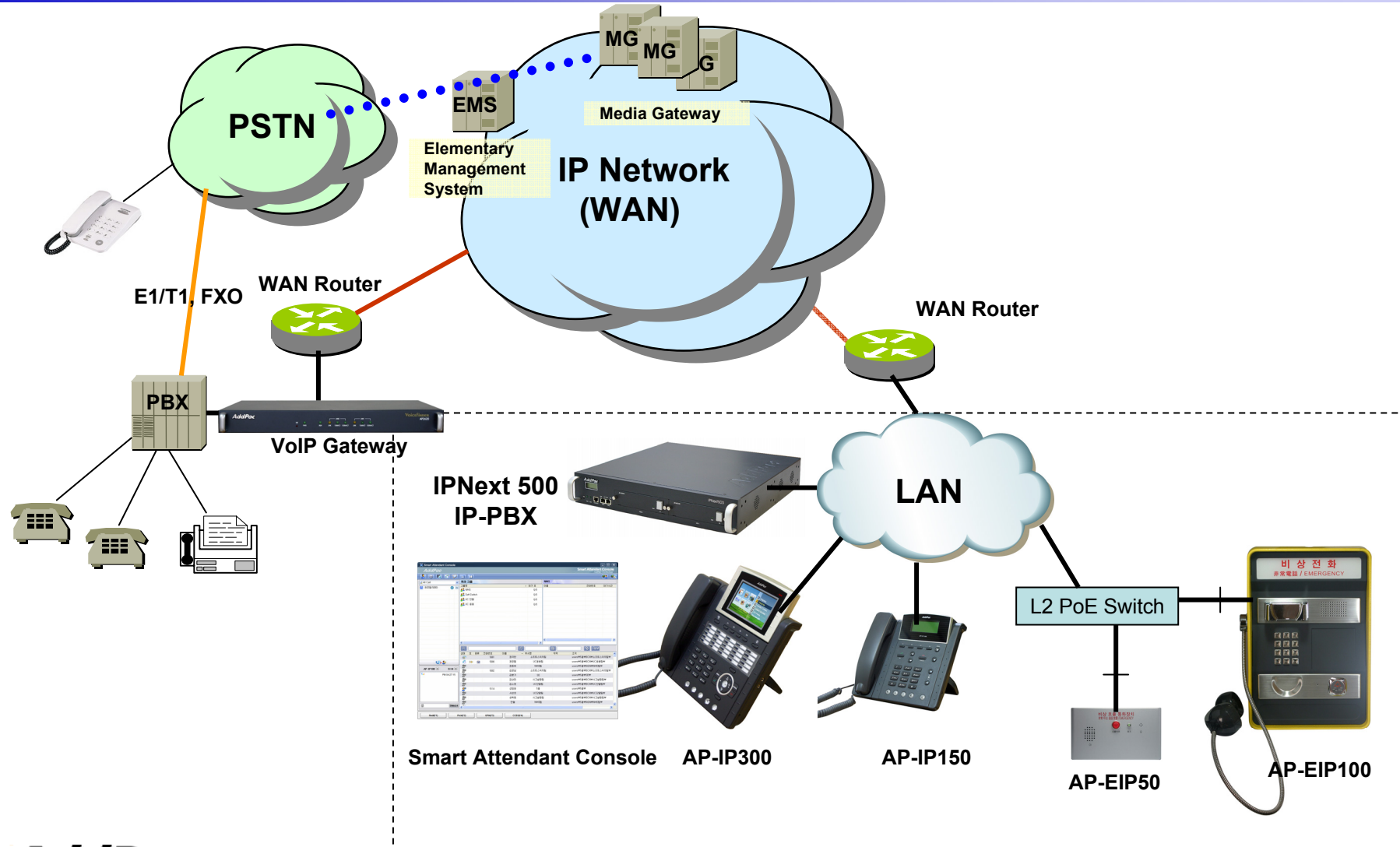
# Network Service and Features

## AP-EIP100 Emergency IP Phone

- **Network Managements**
  - DHCP Server & Relay Functions
  - Network Address Translation (NAT) Function
  - Port Address Translation (PAT) Function
  - Transparent Bridging (IEEE Standard) Function
    - Spanning Tree Bridging Protocol Support
    - Remote Bridging Support
    - Concurrent Routing and Bridging Support
  - Cisco Style Command Line Interface (CLI)
  - Network time Protocol (NTP) Support

# Standard IP-PBX Application

## AP-EIP100 Emergency IP Phone



# Ordering Information

- **AP-EIP100 Emergency IP Phone Hardware**
  - AP-EIP100 Emergency IP Phone Main Body
  - RISC Microprocessor with Embedded DSP Architecture
  - Internal Speaker, MIC, 3x4 KeyPAD, Hand Set
  - Emergency Call Button
  - One(1) 10/100Mbps Fast Ethernet
- **Built-in APOS Internetworking Software for AP-EIP100**
- **Including 1 Year Hardware Warranty**
- **Product Documents**
  - Install and Operation Guide (PDF)
- **Pricing**
  - AddPac Technology Regional Sales Manager
  - Authorized Sales and Marketing Representatives
  - Please Contact [www.addpac.com](http://www.addpac.com)



# Thank you!

**AddPac Technology Co., Ltd.**  
Sales and Marketing

Phone +82.2.568.3848 (KOREA)

FAX +82.2.568.3847 (KOREA)

E-mail [sales@addpac.com](mailto:sales@addpac.com)