

# AP-IPC300M™ IP Camera

**High-performance Network DVR Solution**



## **Preliminary Product Overview**

(Without notice, following described technical spec. can be changed)

***AddPac***

**AddPac Technology**

2009, Sales and Marketing

[www.addpac.com](http://www.addpac.com)

# AP-IPC300M IP Camera

- Product Overview
- Product Highlight
- Hardware Specification
- Software Service
- Network Service and Features
- Network DVR Components
- Application Service
- Ordering Information



# Product Overview

## AP-IPC300M IP Camera

- High-End Programmable DSP Hardware Architecture
- High-Performance IP Camera Features
- High Quality MPEG4 Video Encoder Support
- Speed PAN/TILT Dome Camera Features
- Optical 30 x Zoom Camera
- Up to 640 x 480 Resolution
- Powerful Management and User Friendly Features
- Fault Tolerant and Scalability Architecture
- Firmware Upgradeable Architecture
- Network Interface
  - One(1) 10/100M Fast Ethernet Interface
- MIC In Interface for Audio Recording
- Audio Out Interface for Broadcasting, Announcement
- I/O Interface
  - 2 Alarm Input, 1 Relay

# Product Highlights

AP-IPC300M IP Camera

**Next Generation  
IP Camera**

**Embedded System for  
Stability**

**High-End Programmable DSP  
Hardware Architecture**

**Up to D1 or VGA Video  
Resolution**

**High Quality MPEG4 Video  
Encoder Features**

**Firmware Upgradeable  
Architecture**

**Speed PAN/TILT Dome Camera  
Features**

**APOS™ Technology  
Multimedia Network Protocol**

**Optical 30x Zoom Video Camera**

**MIC In, Audio Out Interface for  
Audio Recording ,Broadcasting Service**

**One(1) 10/100Mbps  
Fast Ethernet Interface,  
IO Interface ( 2 Alarm, 1 Relay)**

**Aluminum Chassis for  
Vandal Proof, Outdoor Application**

[www.addpac.com](http://www.addpac.com)

**AddPac**

# Hardware Specification

AP-IPC300M IP Camera

High-End  
**RISC+**  
**VP**

- **RISC + Video Processor Computing Power**
- **Main Chassis**
  - Network Interface
    - One(1) 10/100Mbps Fast Ethernet
  - Audio Interface
    - One(1) Audio 3.5mm Stereo Input Channel
    - Two(2) Audio RCA Output Channel (Left, Right)
    - Two-Way
  - Camera Features (Next Slide)
  - I/O Interface
    - 2 Alarm Input, 1 Relay
  - Speed PAN/TILT Features
    - **PAN : 360 Degree Endless**
    - **TILT : 180 Degree**
  - **Heater & Cooling PAN**

# Hardware Specification (Camera Features)

AP-IPC300M IP Camera

High-End  
RISC+  
VP

- **Image Sensor**
  - 1/4 Inch, Interline Transfer CDD
- **Day and Night**
  - Automatic
- **Lens**
  - Auto Iris and Auto Focus 30 x Optical Zoom, 10 x Digital Zoom
- **Min illumination/Light Sensitivity**
  - 0.6 Lux (Color), 0.1 Lux (B/W)
- **Max Video Resolution**
  - 720 x 480 NTSC, 720 x 576 PAL
- **Frames per Second**
  - 30 Frame

# Hardware Specification

AP-IPC300M IP Camera



Aluminum Chassis

Indoor Application



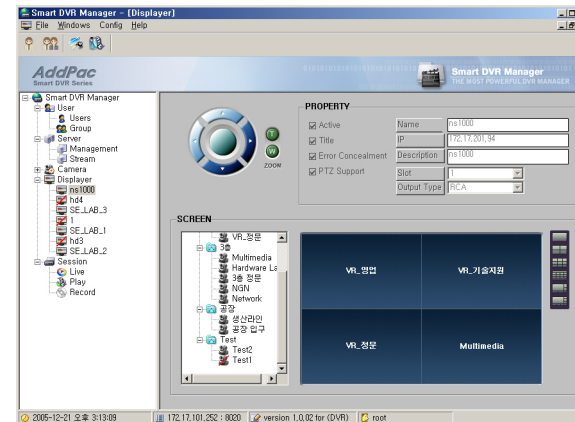
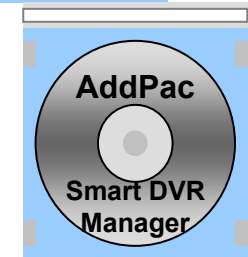
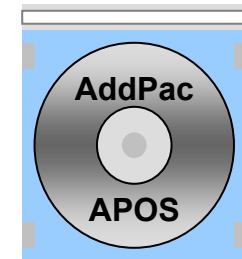
External Cover Chassis  
for Outdoor Application

Outdoor Application  
(Internal Heater, FAN)

# Software Service

AP-IPC300M IP Camera

- **Built-in AddPac APOS Internetworking Software**
  - Scalability, Functionality, and Stability Features
  - Advanced Standalone DVR Recording & Streaming Features
  - QoS Control Features
- **Firmware Upgradeable Architecture**
- **Industry Standard Network Protocol Features**
- **Highly User Friendly Management Features**
  - Smart DVR Manager





# Network Service and Features

## AP-IPC300M IP Camera

### Basic Network Protocols

- ARP, IPv4, TCP, UDP, ICMP, SCTP, IGMP, MLD

### Routing Protocol

- IPv4 : Static

### Service Protocol

- FTP, Telnet, TFTP, DHCP Server/Relay, SNMP Server
- CDP (Cisco Discovery Protocol)
- DNS Resolver , DDNS(nsupdate)
- Bridge
- Syslog

### IPv4 Address Configuration

- Fixed (Static)
- DHCP
- PPPoE

### Miscellaneous

- Standard & Extended IPv4 Access List
- Multi-level User Account Management
- IP accounting



# Network DVR Components

## AP-IPC300M IP Camera

- **DVR Viewer : Option**
  - Smart DVR Viewer (Client, MS-Window)
  - Smart DVR Manager (Client, MS-Window)
- **IP Built-In Camera : AP-IPC series**
- **Network Camera : AP-NC series**
- **Standalone Network DVR**
  - AP-SNR1004 (4 Channel)
  - AP-SNR1009 (9 Channel)
  - AP-SNR1016 (16 Channel)
- **Network DVR**
  - AP-NR800
  - AP-NR1000
  - AP-NR2000
  - AP-NR5000



# Smart DVR Viewer

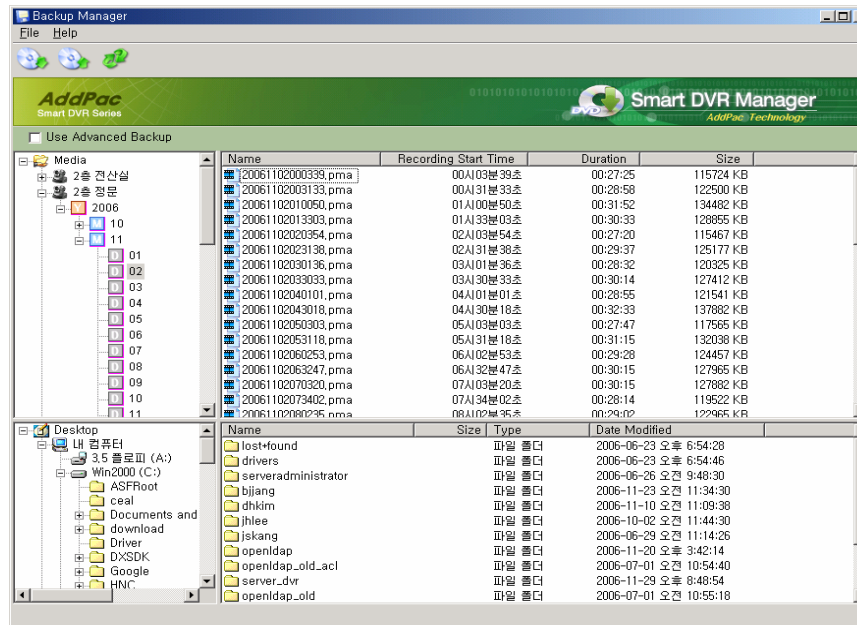
AP-IPC300M IP Camera



- Multi-Standalone DVR Server Support
- PAN/TILT/ZOOM Control, Layout & Screen Mode Change
- Error Concealment Support
- Motion Detection & Tracking
- Multi-Live View, Multi-Recording View, Time Synchronization View
- Fast Search, Jog Shuttle Slow Motion & Rewind
- Intelligent Search using Motion Detection
- Recording ZOOM View
- Audio/Video(MPEG4) Support.

# Smart DVR Backup Manager

AP-IPC300M IP Camera



- PC based DVR Backup Software for AddPac DVR Solution
- User can backup DVR data in DVR to Local PC by using DVR Backup Manager.
- Support the Advanced Backup Function
- Support the Backup Data Restore Function
- DVR Burning Support

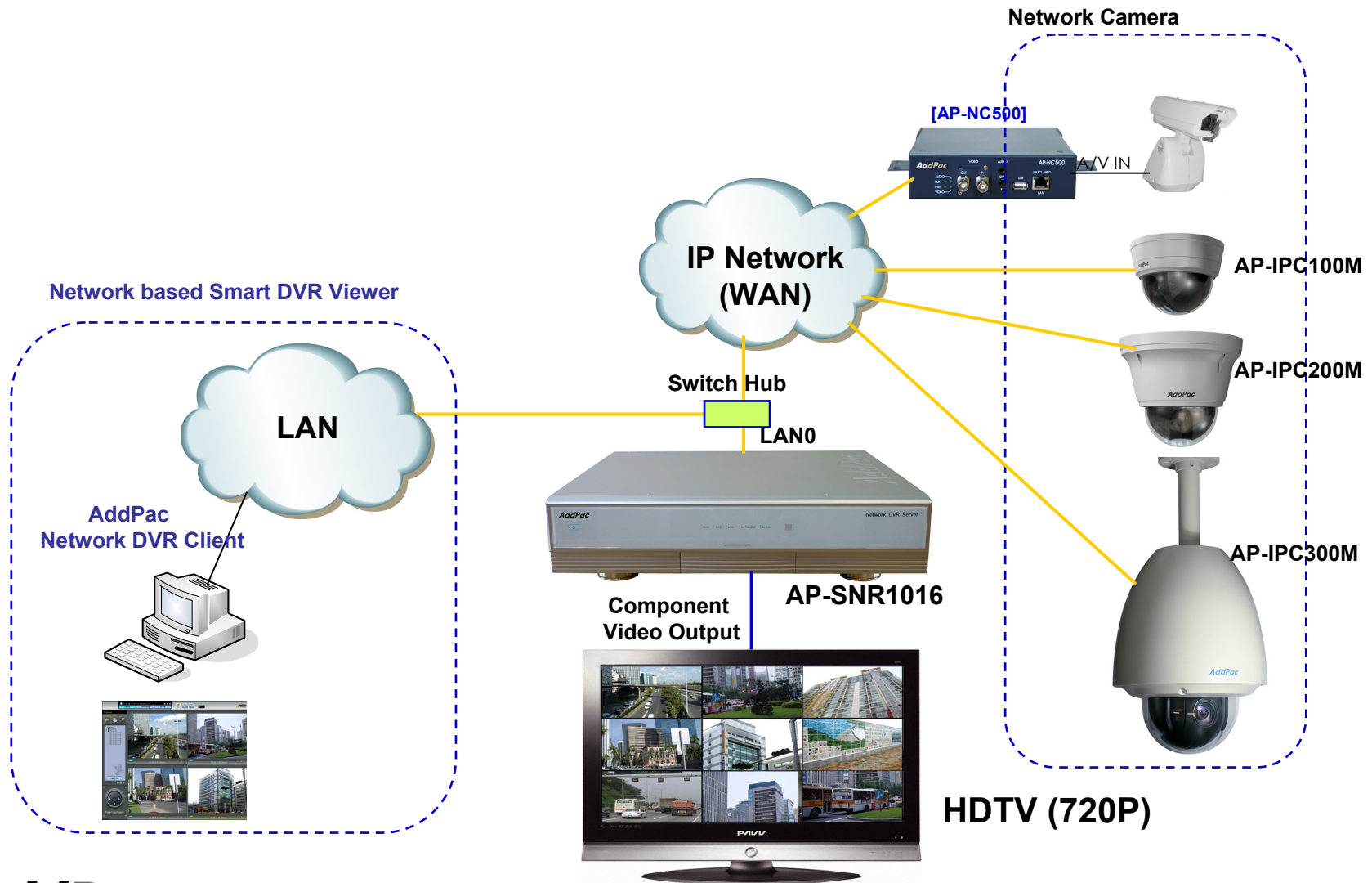
# Application Service

- Network DVR Standard Application
- Remote DVR broadcasting Application
- Multiple Standalone DVR Application

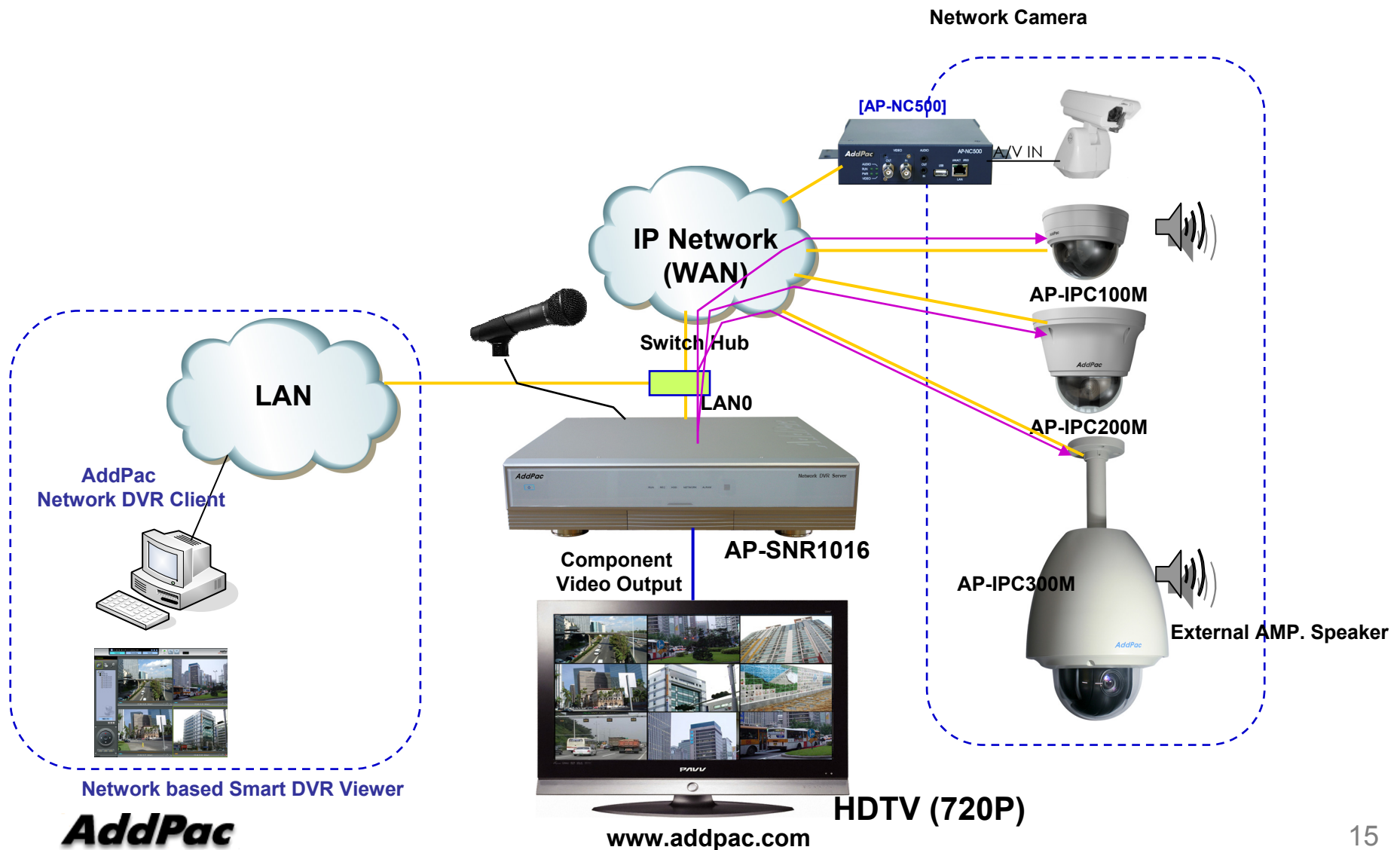




# Network DVR Standard App.

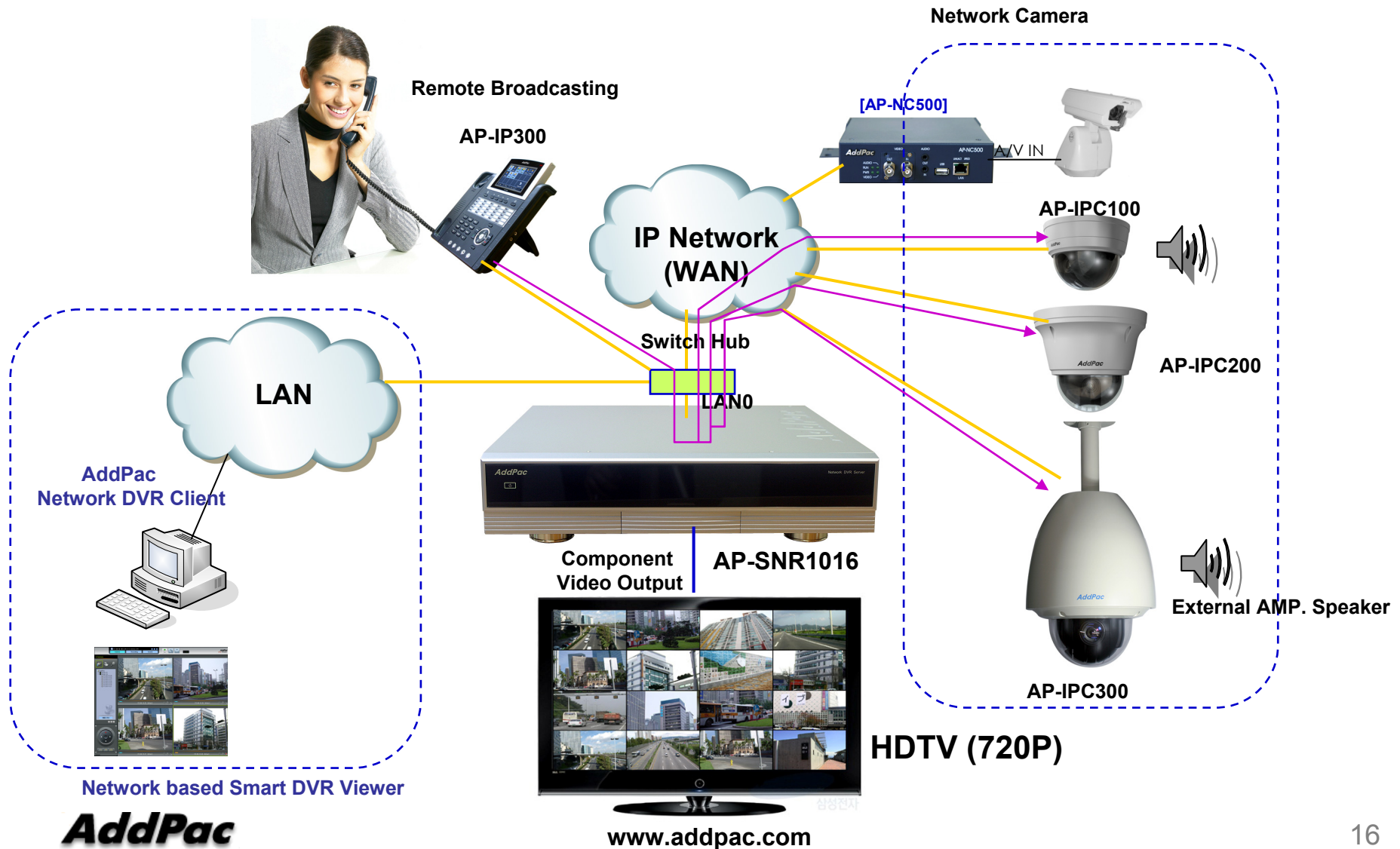


# Remote Broadcasting App. (CASE1)



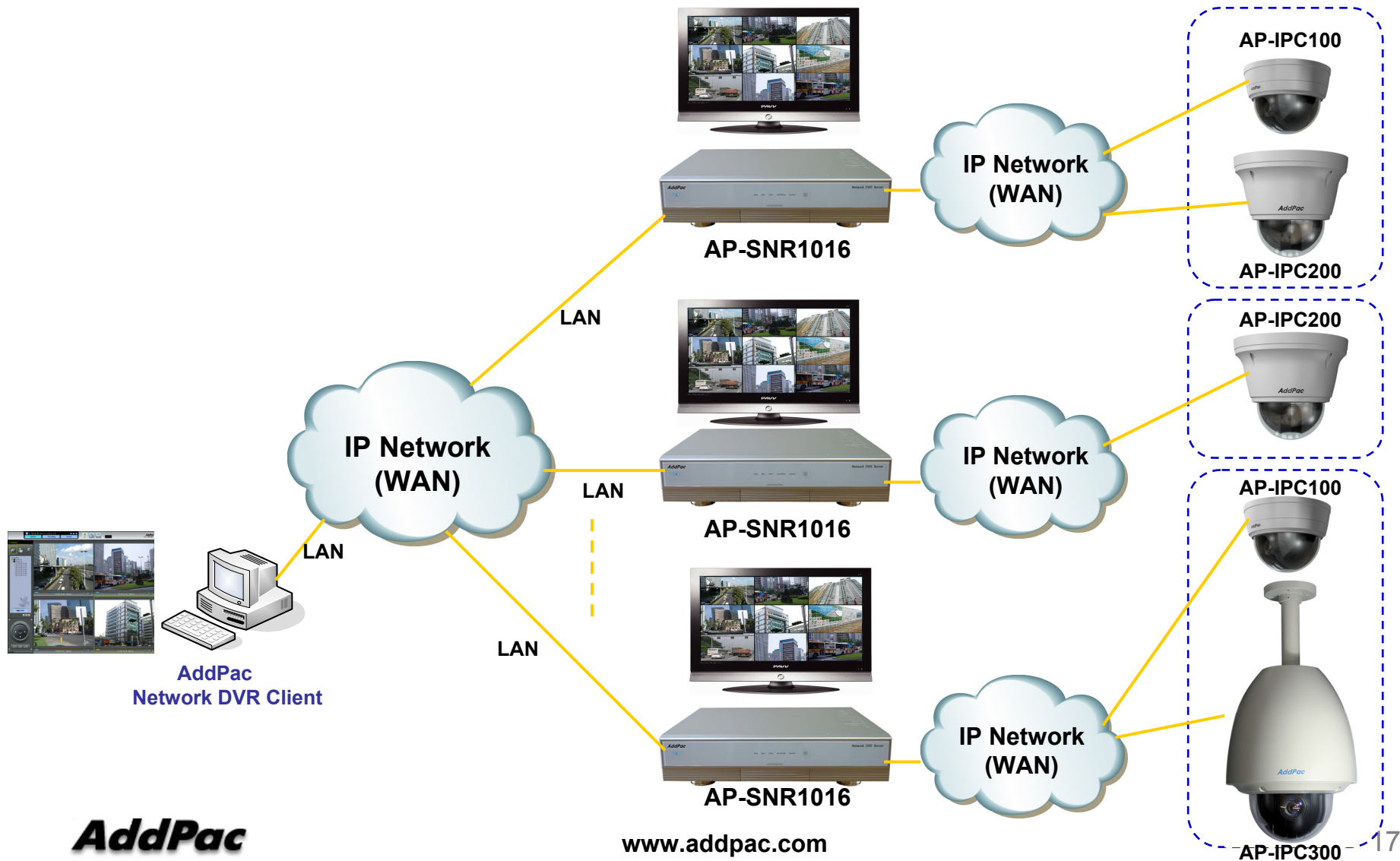
**AddPac**

# Remote Broadcasting App. (CASE2)





# Multiple Network DVR App.



**AddPac**

[www.addpac.com](http://www.addpac.com)

# Ordering Information

- **AP-IPC300M IP Camera Hardware**
  - AP-IPC300M Main Body
  - Including Network Cable Set & Power Supply Cable, etc.
- **Built-in APOS Internetworking Software for AP-IPC300M**
- **Including 1 Year Hardware Warranty**
- **Product Documents**
  - Install and Operation Guide (PDF)
- **Pricing**
  - AddPac Technology Regional Sales Manager
  - Authorized Sales and Marketing Representatives
  - Please Contact [www.addpac.com](http://www.addpac.com)



# Thank you!

**AddPac Technology Co., Ltd.**  
Sales and Marketing

Phone +82.2.568.3848 (KOREA)

FAX +82.2.568.3847 (KOREA)

E-mail [sales@addpac.com](mailto:sales@addpac.com)