

AP-IPC250M™

IP Camera

High-performance Network DVR Solution

Preliminary Product Overview

(Without notice, following described technical spec. can be changed)



AddPac

AddPac Technology

2009, Sales and Marketing

www.addpac.com

AP-IPC250M IP Camera

- Product Overview
- Product Highlight
- Hardware Specification
- Software Service
- Network Service and Features
- Network DVR Components
- Application Service
- Ordering Information



AP-IPC50M



AP-IPC100M



AP-IPC200M



AP-IPC250M



AddPac

www.addpac.com

Product Overview

AP-IPC250M IP Camera

- High-End Programmable DSP Hardware Architecture
- High-Performance IP Camera Features
- High Quality MPEG4 Video Encoder Support
- Speed PAN/TILT Dome Camera Features
- Optical 10x Zoom Camera
- Up to 640 x 480 Resolution
- Powerful Management and User Friendly Features
- Fault Tolerant and Scalability Architecture
- Firmware Upgradeable Architecture
- Network Interface
 - One(1) 10/100M Fast Ethernet Interface
- MIC In Interface for Audio Recording
- Audio Out Interface for Broadcasting, Announcement
- I/O Interface
 - 2 Alarm Input, 1 Relay

Product Highlights

AP-IPC250M IP Camera

Next Generation IP Camera

Embedded System for
Stability, Cooling & Heater
for Outdoor Application

High-End Programmable DSP
Hardware Architecture

Up to 640x480 Video
Resolution

High Quality MPEG4 Video
Encoder Features

Firmware Upgradeable
Architecture

Speed PAN/TILT Dome Camera
Features

APOS™ Technology
Multimedia Network Protocol

Optical 10x Zoom Video Camera

MIC In, Audio Out Interface for
Audio Recording ,Broadcasting Service

One(1) 10/100Mbps
Fast Ethernet Interface,
IO Interface (2 Alarm, 1 Relay)

Aluminum Chassis for
Vandal Proof

AddPac

www.addpac.com

Hardware Specification

AP-IPC250M IP Camera

High-End
RISC+
VP

- **RISC + Video Processor Computing Power**
- **Main Chassis**
 - Network Interface
 - One(1) 10/100Mbps Fast Ethernet
 - Audio Interface
 - One(1) Audio 3.5mm Stereo Input Channel
 - Two(2) Audio RCA Output Channel (Left, Right)
 - Two-Way
 - Camera Features (Next Slide)
 - I/O Interface
 - 2 Alarm Input, 1 Relay
 - Speed PAN/TILT Features
 - **PAN : 360 Degree Endless**
 - **TILT : 180 Degree**



Hardware Specification (Camera Features)

AP-IPC250M IP Camera

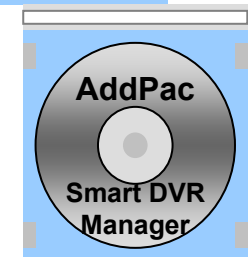
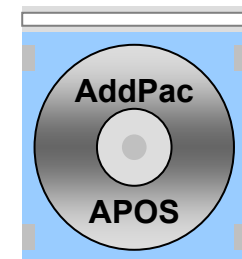
High-End
RISC+
VP

- **Image Sensor**
 - 1/4 Inch, Interline Transfer CCD
- **Day and Night**
 - Automatic
- **Lens**
 - Auto Iris and Auto Focus 10x Optical Zoom, 10x Digital Zoom
- **Min illumination/Light Sensitivity**
 - 0.7 Lux (color) 0.02 Lux (B/W)
- **Max Video Resolution**
 - 720 x 480 NTSC, 720 x 576 PAL
- **Frames per Second**
 - 30 (D1)

Software Service

AP-IPC250M IP Camera

- **Built-in AddPac APOS Internetworking Software**
 - Scalability, Functionality, and Stability Features
 - Advanced Standalone DVR Recording & Streaming Features
 - QoS Control Features
- **Firmware Upgradeable Architecture**
- **Industry Standard Network Protocol Features**
- **Highly User Friendly Management Features**
 - Smart DVR Manager



Network Service and Features

AP-IPC250M IP Camera

Basic Network Protocols

- ARP, IPv4, TCP, UDP, ICMP, SCTP, IGMP, MLD

Routing Protocol

- IPv4 : Static

Service Protocol

- FTP, Telnet, TFTP, DHCP Server/Relay, SNMP Server
- CDP (Cisco Discovery Protocol)
- DNS Resolver , DDNS(nsupdate)
- Bridge
- Syslog

IPv4 Address Configuration

- Fixed (Static)
- DHCP
- PPPoE

Miscellaneous

- Standard & Extended IPv4 Access List
- Multi-level User Account Management
- IP accounting



Network DVR Components

AP-IPC250M IP Camera

- **DVR Viewer : Option**
 - Smart DVR Viewer (Client, MS-Window)
 - Smart DVR Manager (Client, MS-Window)
- **IP Built-In Camera : AP-IPC series**
- **Network Camera : AP-NC series**
- **Standalone Network DVR**
 - AP-SNR1004 (4 Channel)
 - AP-SNR1009 (9 Channel)
 - AP-SNR1016 (16 Channel)
- **Network DVR**
 - AP-NR800
 - AP-NR1000
 - AP-NR2000
 - AP-NR5000



Smart DVR Viewer

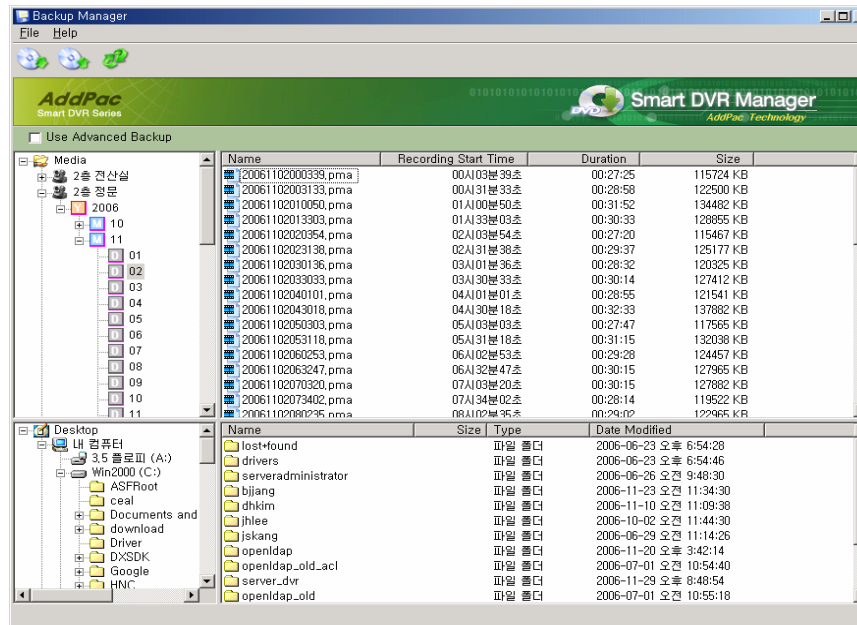
AP-IPC250M IP Camera



- Multi-Standalone DVR Server Support
- PAN/TILT/ZOOM Control, Layout & Screen Mode Change
- Error Concealment Support
- Motion Detection & Tracking
- Multi-Live View, Multi-Recording View, Time Synchronization View
- Fast Search, Jog Shuttle Slow Motion & Rewind
- Intelligent Search using Motion Detection
- Recording ZOOM View
- Audio/Video(MPEG4) Support.

Smart DVR Backup Manager

AP-IPC250M IP Camera



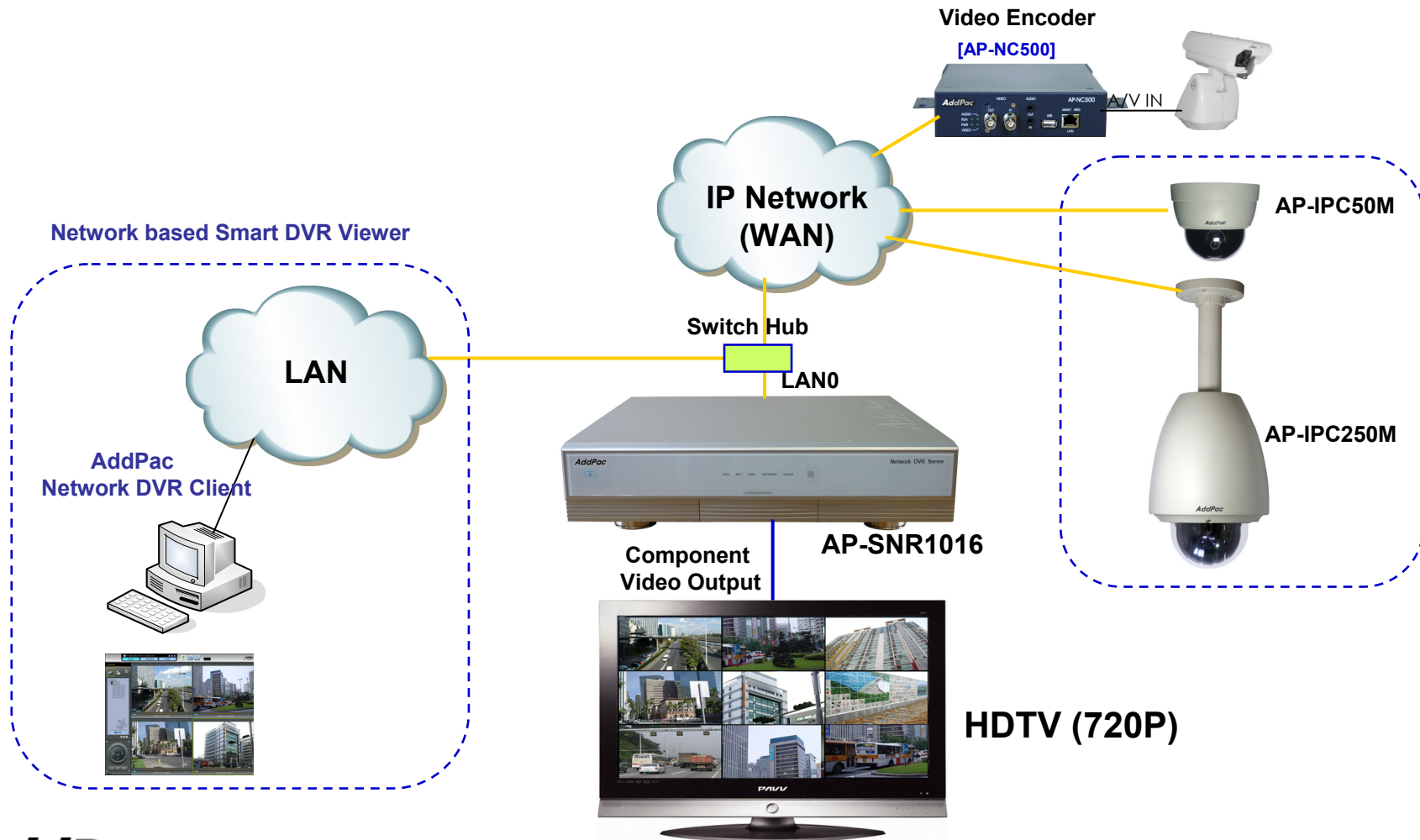
- PC based DVR Backup Software for AddPac DVR Solution
- User can backup DVR data in DVR to Local PC by using DVR Backup Manager.
- Support the Advanced Backup Function
- Support the Backup Data Restore Function
- DVR Burning Support

Application Service

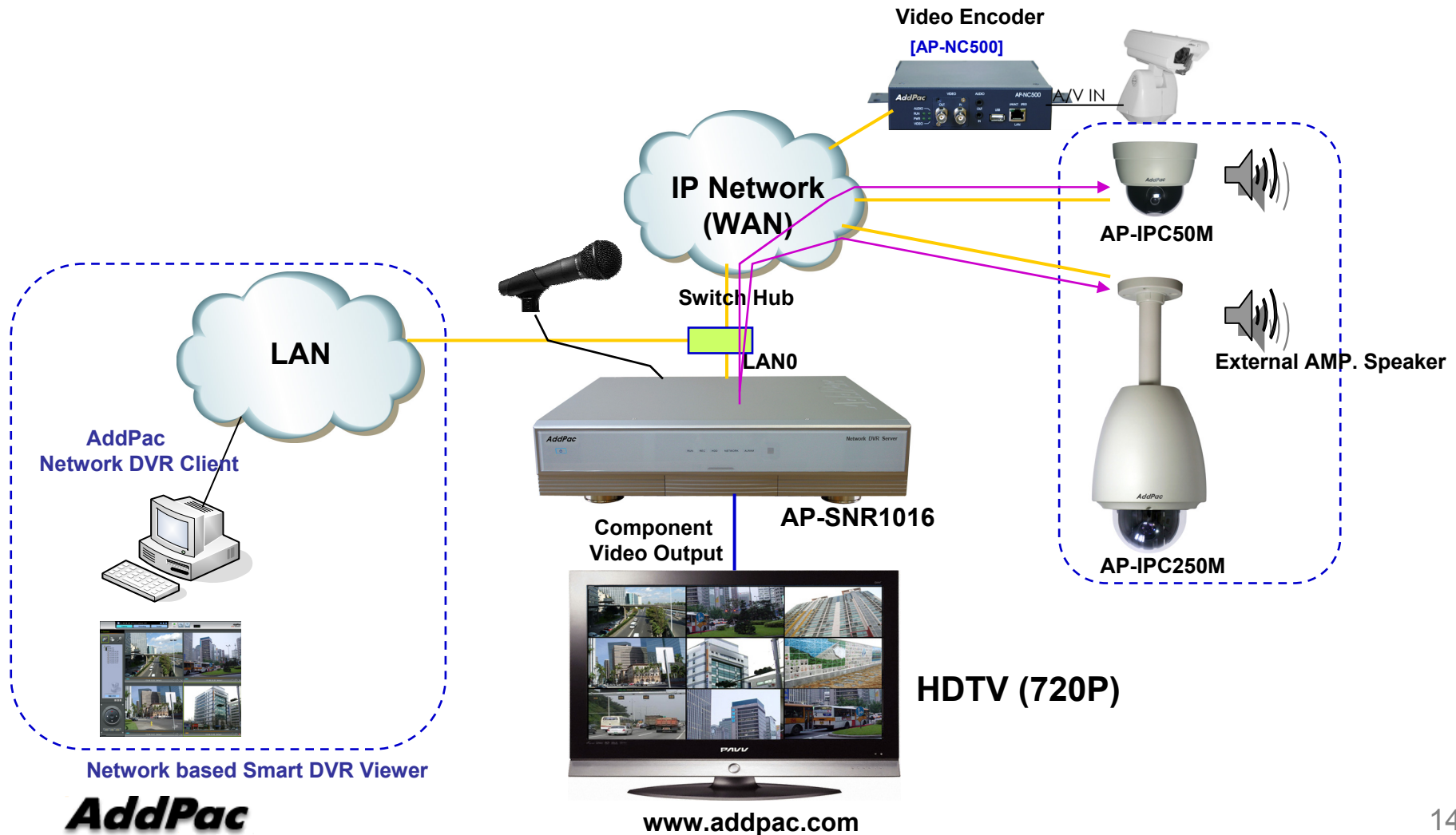
- **Network DVR Standard Application**
- **Remote DVR broadcasting Application**
- **Multiple Standalone DVR Application**



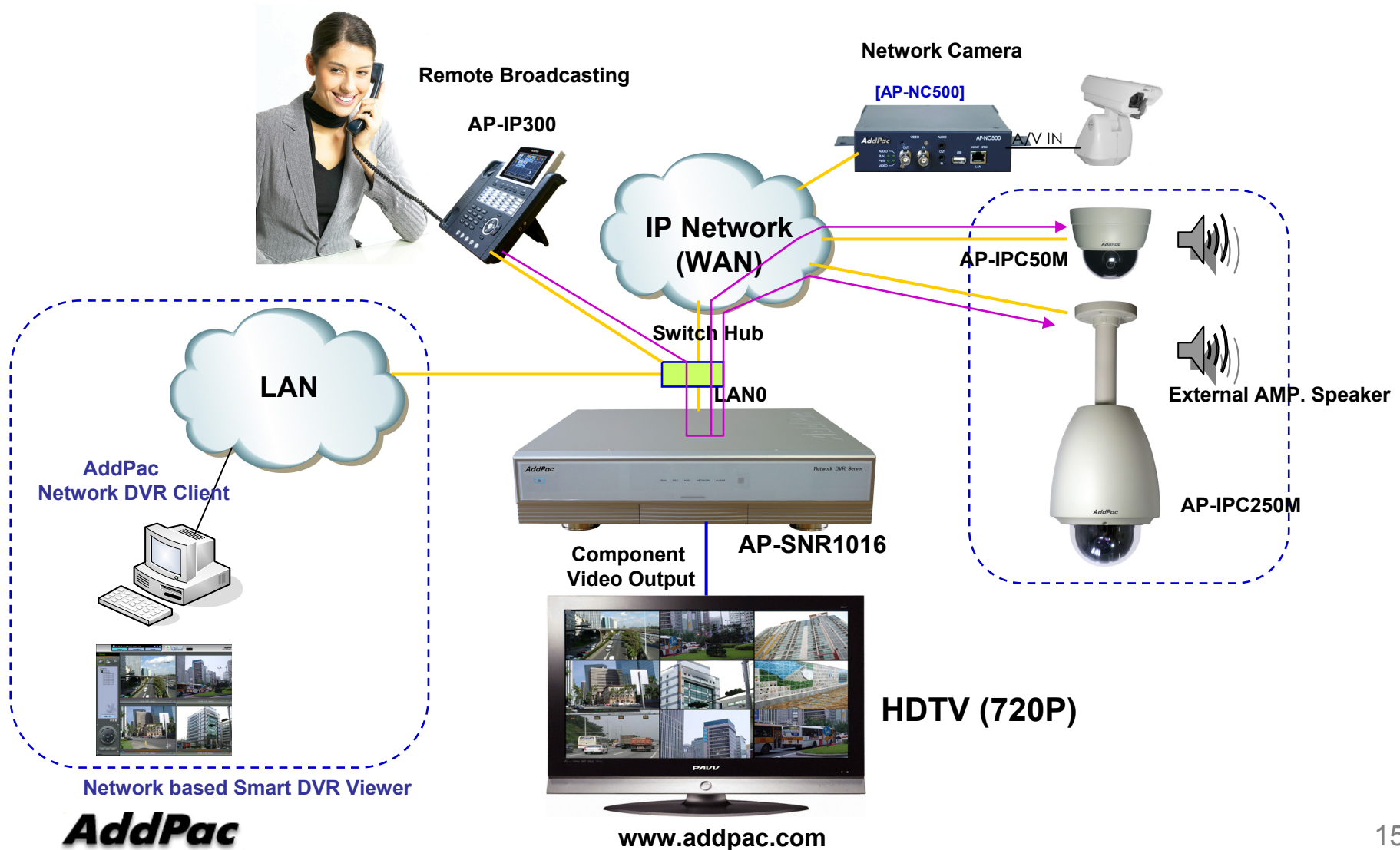
Network DVR Standard App.



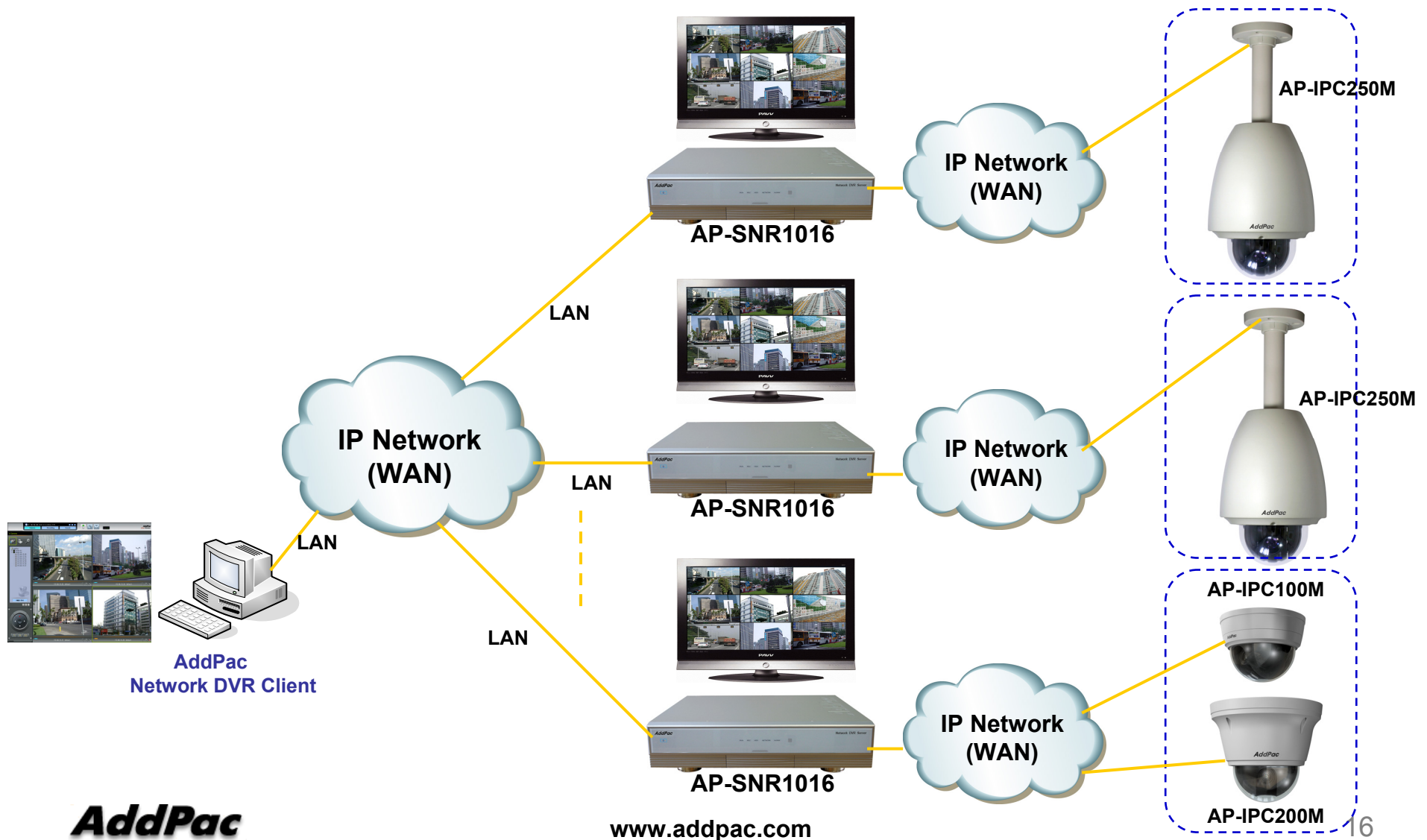
Remote Broadcasting App. (CASE1)



Remote Broadcasting App. (CASE2)



Multiple Network DVR App.



AddPac

www.addpac.com

Ordering Information

- **AP-IPC250M IP Camera Hardware**
 - AP-IPC250M Main Body
 - Including Network Cable Set & Power Supply Cable, etc.
- **Built-in APOS Internetworking Software for AP-IPC250M**
- **Including 1 Year Hardware Warranty**
- **Product Documents**
 - Install and Operation Guide (PDF)
- **Pricing**
 - AddPac Technology Regional Sales Manager
 - Authorized Sales and Marketing Representatives
 - Please Contact www.addpac.com



Thank you!

AddPac Technology Co., Ltd.
Sales and Marketing

Phone +82.2.568.3848 (KOREA)

FAX +82.2.568.3847 (KOREA)

E-mail sales@addpac.com