

# AP-PT50 IP Speed Dial Extension Terminal

High Performance Broadband Convergence Network  
IP Speed Dial Extension Terminal Solution

## Product Overview

(Without notice, following described technical spec. can be changed)



***AddPac***

**AddPac Technology**

Sales and Marketing

[www.addpac.com](http://www.addpac.com)

# Contents

- Product Overview
- Hardware Specification
- Software Service
- Network Service and Features
- Application Area
- Ordering Information



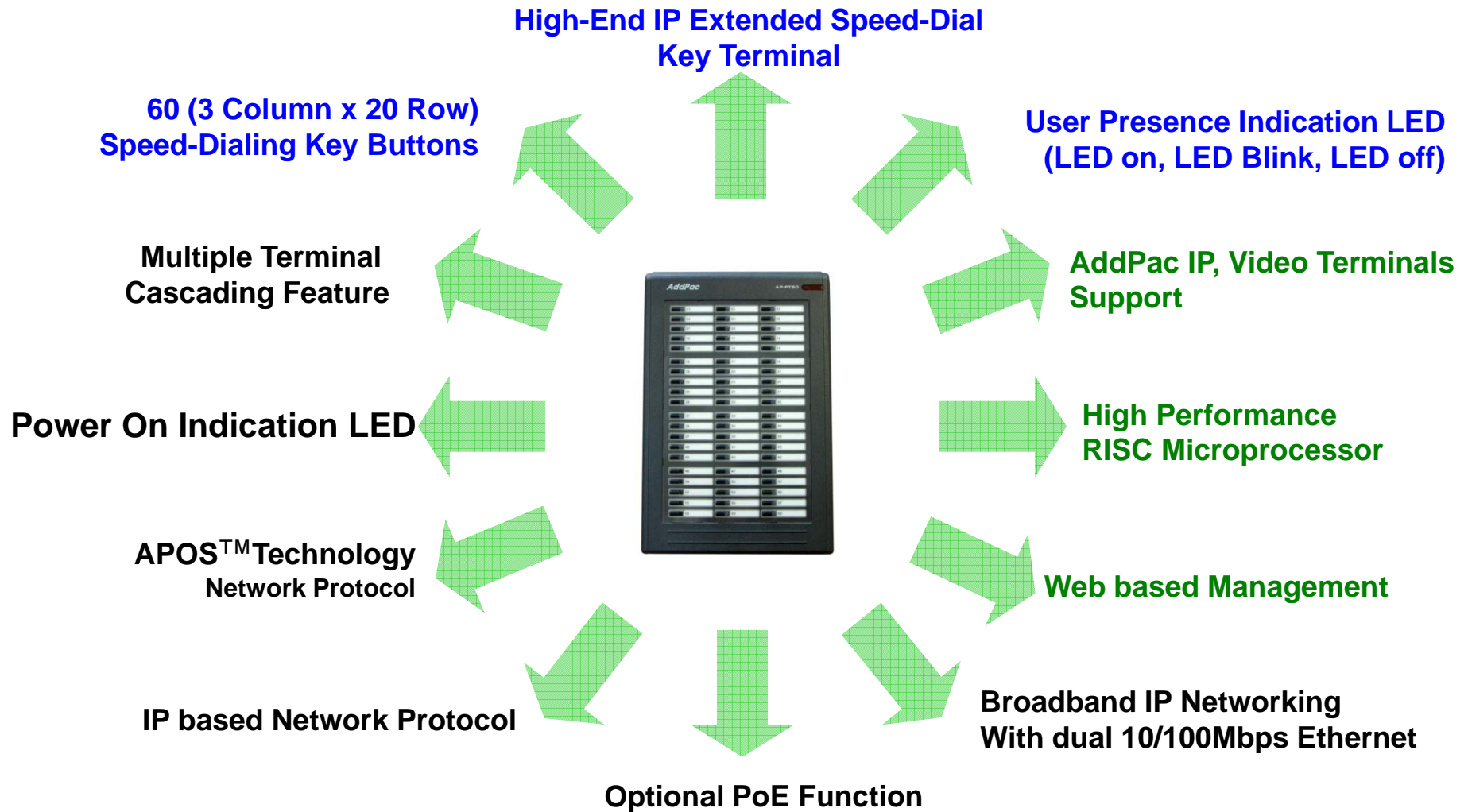
# Product Overview

## AP-PT50 IP Speed Dial Extension Terminal

- Speed Dialing Terminal with User Presence Indication LAMP
- Inter-working with IP Terminal, Presence Server, Call Manager
- Multiple Terminal Cascading Feature
- User Presence Group Feature
- Firmware Upgradeable Architecture
- PoE (Power over Ethernet) Function

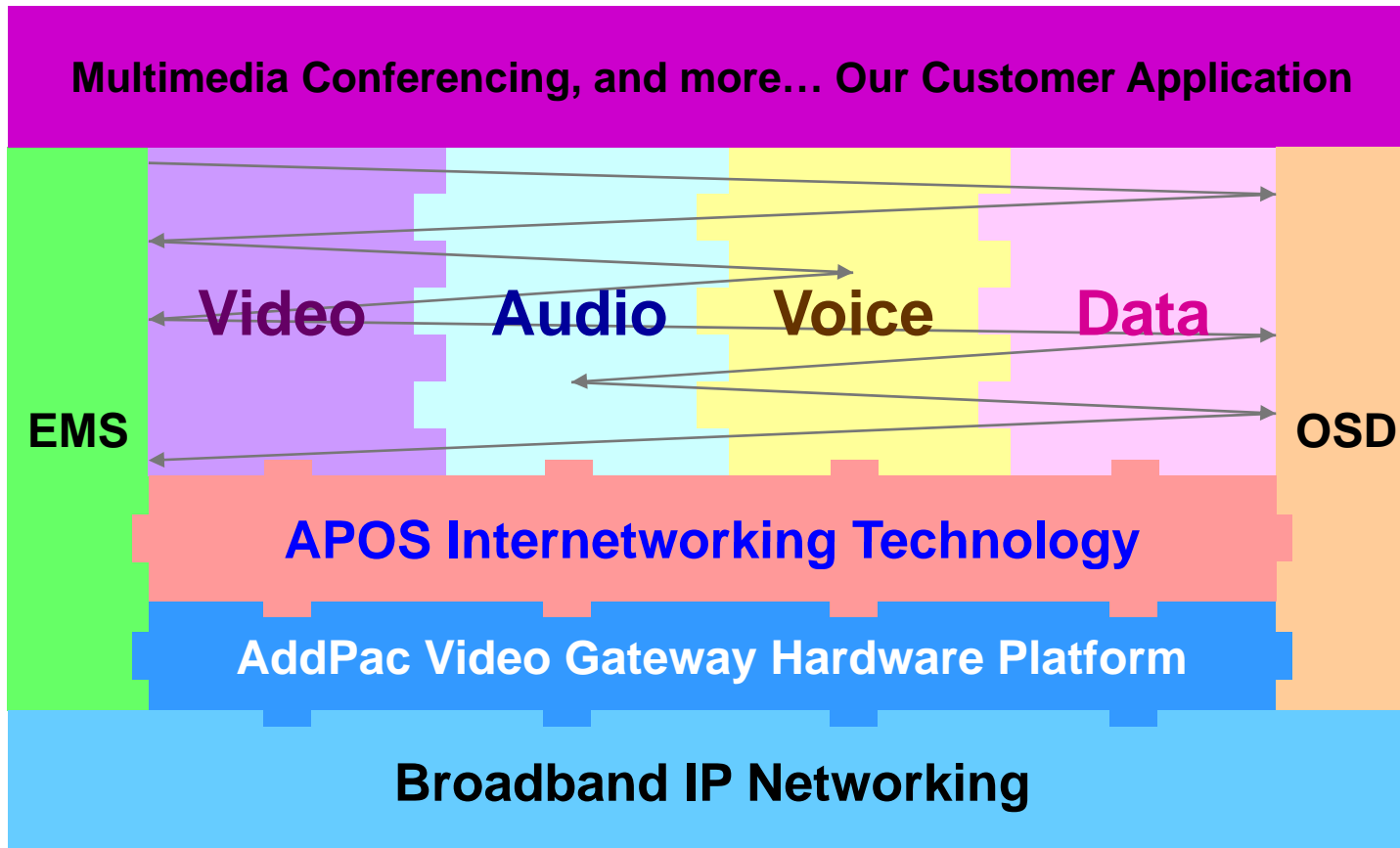
# Product Highlights

AP-PT50 IP Speed Dial Extension Terminal



# Multimedia Service

AP-PT50 IP Speed Dial Extension Terminal



- APOS : AddPac Internetworking Operating System
- OSD : On- Screen Display
- EMS : Element Management System

# Hardware Specification

## AP-PT50 IP Speed Dial Extension Terminal

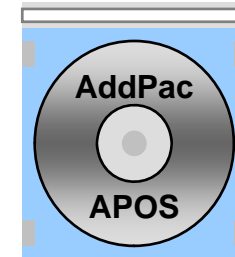
- **RISC+DSP Microprocessor Computing Power**
- **60 Speed Dial Key with User Presence LAMP**
- **Optional PoE (Power over Ethernet) Interface**
- **Network Interface**
  - Two(2) 10/100Mbps Fast Ethernet
- **Power Supply**
  - Power over Ethernet (Option)
  - External Power Adaptor (5V, 2A)
  - Power Switch
- **Connector for Cascading**



# Software Service

AP-PT50 IP Speed Dial Extension Terminal

- **Built-in AddPac APOS Internetworking Software**
  - Scalability, Functionality, and Stability Features
- **Programmable User Presence Services**
- **Firmware Upgradeable Architecture**
- **Industry Standard IP based Network Protocol Features**



# Network Service and Features

## AP-PT50 IP Speed Dial Extension Terminal

- **Network Managements**
  - Standard SNMP Agent (MIB v2) Support
  - Remote Management using Console, Telnet
  - Web based Management using HTTP Server Interface
- **Security Functions**
  - Standard & Extended IP Access List
  - Enable/Disable for Specific Network Protocols
  - Multi-level User Account Management
  - Auto-disconnect for Telnet/Console Sessions
  - PPP User Authentication Supports (PAP & CHAP)
- **Operation & Managements**
  - System Performance Analysis for Process, CPU, Connection Interface
  - Debugging, System Auditing, and Diagnostics Support
  - System Booting and Auto-rebooting with Watchdog Feature
  - System Managements with Data Logging
  - IP Traffic Statistics with Accounting



# Network Service and Features

## AP-PT50 IP Speed Dial Extension Terminal

- **Network Managements**
  - DHCP Server & Relay Functions
  - Network Address Translation (NAT) Function
  - Port Address Translation (PAT) Function
  - Transparent Bridging (IEEE Standard) Function
    - Spanning Tree Bridging Protocol Support
    - Remote Bridging Support
    - Concurrent Routing and Bridging Support
  - Cisco Style Command Line Interface (CLI)
  - Network time Protocol (NTP) Support

# AP-PT50 IP Speed Dial Extension Terminal

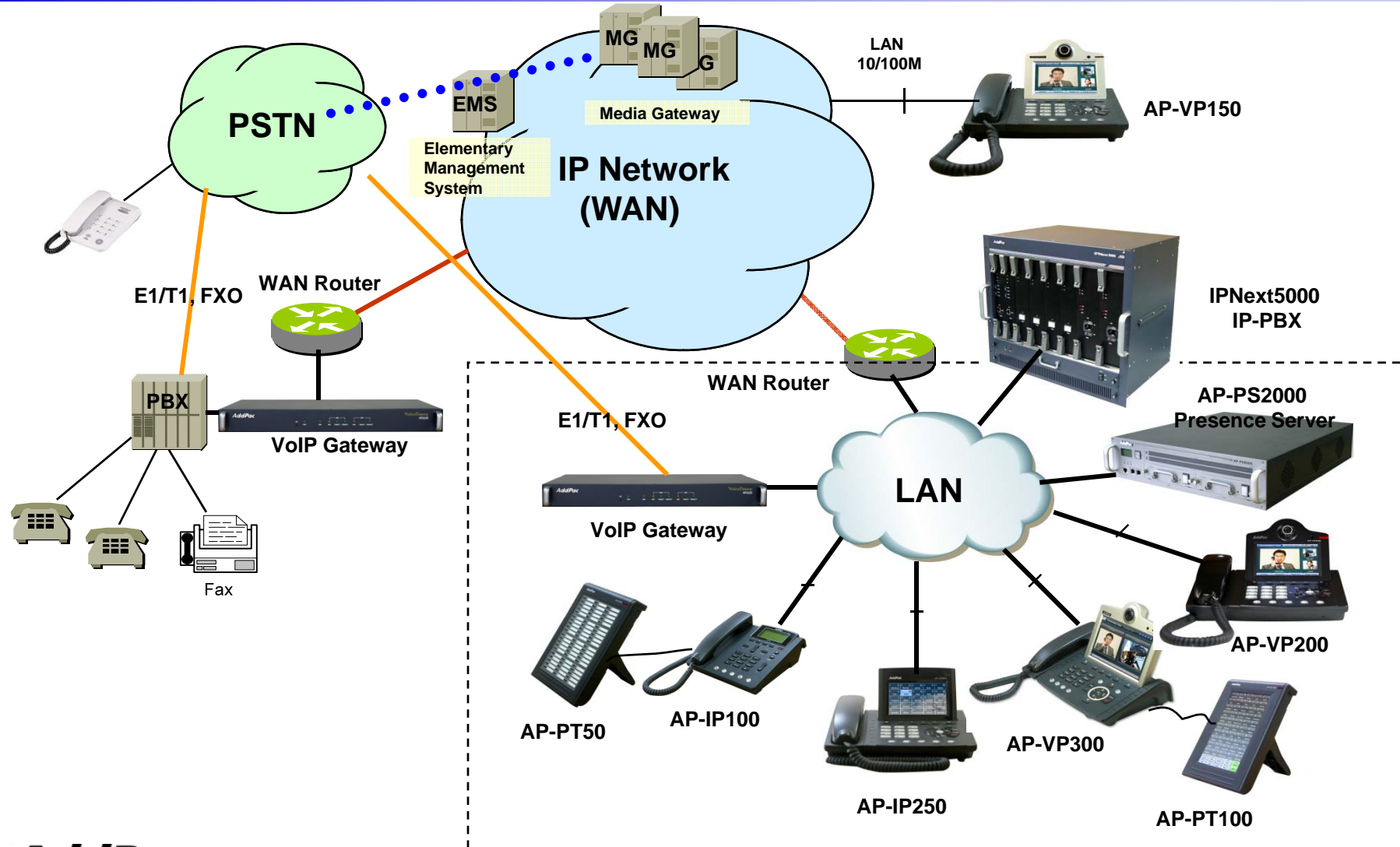
Application Area

- IP-PBX IP Speed Dial Extension Terminal



# Standard IP-PBX Application

## AP-PT50 IP Speed Dial Extension Terminal



# Ordering Information

- **AP-PT50 IP Speed Dial Extension Terminal Hardware**
  - RISC Microprocessor with DSP Architecture
  - 60 Speed-dial key button with Presence Indication LAMP
  - Internal Speaker
  - 2-ports 10/100Mbps Fast Ethernet
  - Optional PoE Interface
  - Including Network Cable Set & Ext. Power Supply, etc.
- **Built-in APOS Internetworking Software for AP-PT50**
- **Including 1 Year Hardware Warranty**
- **Product Documents**
  - Install and Operation Guide (PDF)
- **Pricing**
  - AddPac Technology Regional Sales Manager
  - Authorized Sales and Marketing Representatives
  - Please Contact [www.addpac.com](http://www.addpac.com)



# Thank you!

**AddPac Technology Co., Ltd.**  
Sales and Marketing

Phone +82.2.568.3848 (KOREA)

FAX +82.2.568.3847 (KOREA)

E-mail [sales@addpac.com](mailto:sales@addpac.com)