

### Hardware Specifications

<b>Main Chassis</b>	High Solidity ABS Chassis
<b>CPU</b>	High Performance RISC Processor
<b>Memory</b>	4MB Flash Memory 16MB SDRAM Main Memory
<b>Network Interface</b>	1-port 10/100Mbps Ethernet (LAN 0) for WAN Interface 1-port 10/100Mbps Ethernet (LAN 1) for LAN Interface
Speed-Dialing Key	40 Key Button (2 Column x 20 Row)
User Presence LAMP	Button with User Presence Indication LED
<b>Operation Environment</b>	Temperature 0°C ~ +45°C (operating), -40°C ~ +85°C (storage), Humidity 5% ~ 95%
<b>Power Supply</b>	AC110~220VAC 50/60Hz Free Voltage, 5V 2Amp.
Power Switch	Power ON/OFF Switch
PoE	Power over Ethernet : Option
<b>Demension</b>	143mm x 220mm x 38mm (W x D x H)
Weight	0.8 Kg

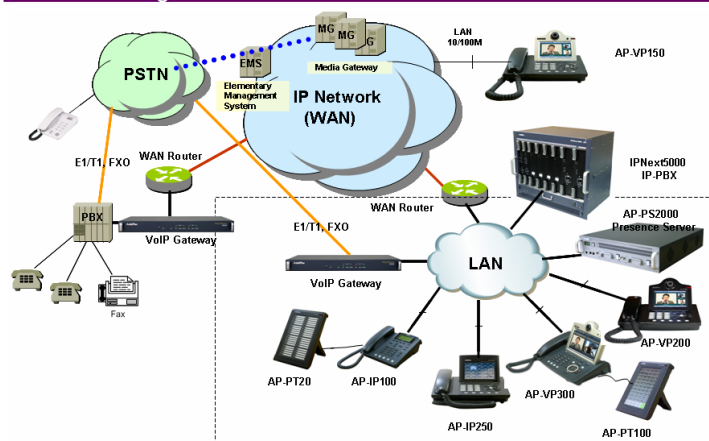
### WAN, IP Routing and Other Features

<b>WAN Protocol</b>	Point-to-Point Protocol (PPPoE) for ADSL
<b>IP Routing</b>	IPv4 Static and IEEE 802.1Q VLAN Routing
<b>Network Management</b>	Standard SNMP Agent (MIB v2) Support, Telnet, Web Based Management, Remote Firmware (APOS) Upgrade via FTP/TFTP Support
<b>Security Features</b>	IP Packet Filtering, Access List, Access Control and Data Protections, Enable/Disable for Specific Protocols
<b>Operation &amp; Management</b>	Multi-level User Account Management, Auto-disconnect for Telnet/Console Sessions, PPP User Authentication Support (PAP/CHAP)
<b>Other Features</b>	Performance Analyzing (Process, CPU, Interface), Configuration Backup and Restore for APOS Management, Debugging and Diagnosis Features, System Booting/Rebooting through Watch-Dog, Data Logging Features, IP Traffic Statistics through Accounting Support
<b>Other Features</b>	DHCP Server and Relay, Network Address Translation (NAT), Port Address Translation (PAT), IEEE Standard Transparent Bridging (Spanning Tree Bridging and Concurrent Routing Bridging Protocol), Network Time Protocol (NTP), Cisco Style Command Line Interface (CLI), DNS Proxy, UPnP, MAC Address Filter Service etc.

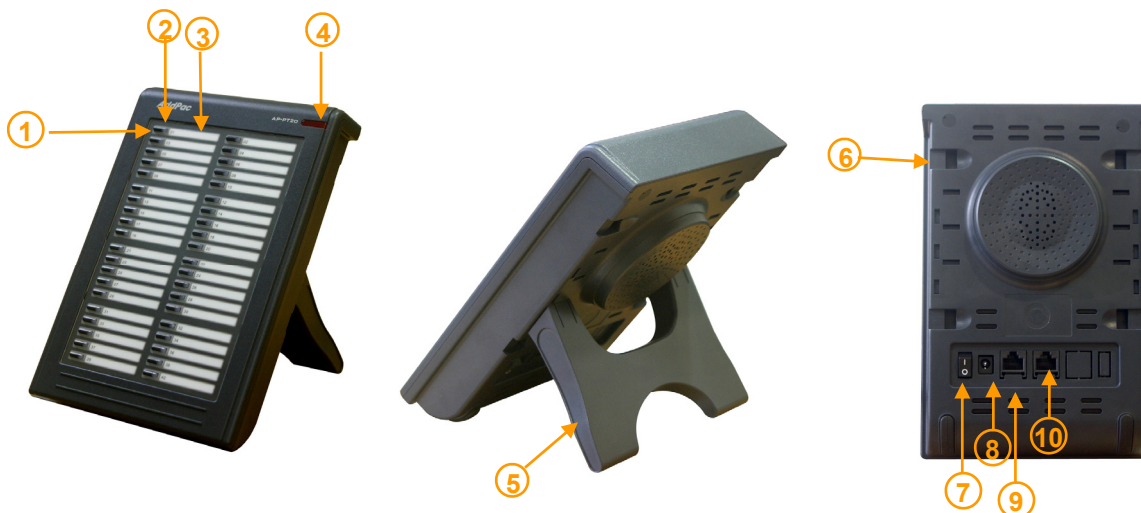
### IP Telephony Services (Extended Speed Dialing Box)

<b>Speed Dialing Service</b>	Extended Speed Dialing Service Box for AddPac IP Phones, Video Phones
<b>Speed Dialing Key Button</b>	40 Key Buttons with User Presence LAMP
<b>User Presence Service</b>	User Busy, User Ringing, Idle
<b>User Presence Servers</b>	IP-PBX built-in Presence Server, Independent Large Capacity Presence Server
<b>IP-PBX Interworking</b>	SSCP AddPac Proprietary Protocol
<b>Presence Server Interworking</b>	SSCP AddPac Proprietary Protocol
<b>IP Terminal Interworking</b>	SSCP AddPac Proprietary Protocol
<b>User Registration</b>	System Manager build User Profiles
<b>User Registration Profile</b>	Multiple AP-PT20 Terminal Cascading
<b>Cascading</b>	Service Feature
	Ex: Single Terminal : 40 Speed-Dialing Service Two Terminals : 80 Speed-Dialing Service

### Network Diagram



### Speed Dialing Key, Network Interface of AP-PT20



1. Speed-Dial Key
2. User Presence LAMP
3. Name Plate
4. Power Indication LAMP
5. Stand
6. Connector Hole for Cascading

7. External Power Input (DC5V)
8. Power ON/OFF Switch
9. LAN0 (Fast Ethernet)
10. LAN1 (Fast Ethernet)