

Hardware Specifications

Main Chassis	High Solidity ABS Chassis
CPU	High Performance RISC Processor
Memory	4MB Flash Memory 32MB SDRAM Main Memory
Network Interface	1-port 10/100Mbps Ethernet (LAN 0) for WAN Interface 1-port 10/100Mbps Ethernet (LAN 1) for LAN Interface
LCD	7 Inch LCD Panel with Touch Screen Interface
Speed-Dialing Button Map	Touch Screen based 50 Button (5 column x 10 row)
Head Set Interface	Audio Input, Output Interface for Head Set
Internal Speaker	High Quality Speaker for Effective Sound
Operation Environment	Temperature 0℃ ~ +45℃(operating), -40℃ ~ +85℃ (storage), Humidity 5% ~ 95%
Power Supply	AC110~220VAC 50/60Hz Free Voltage, 5V 3Amp.
Power Switch	Power ON/OFF Switch
PoE	Power over Ethernet : Option
Demension	143mm x 220mm x 38mm (W x D x H)
Weight	1.0 Kg

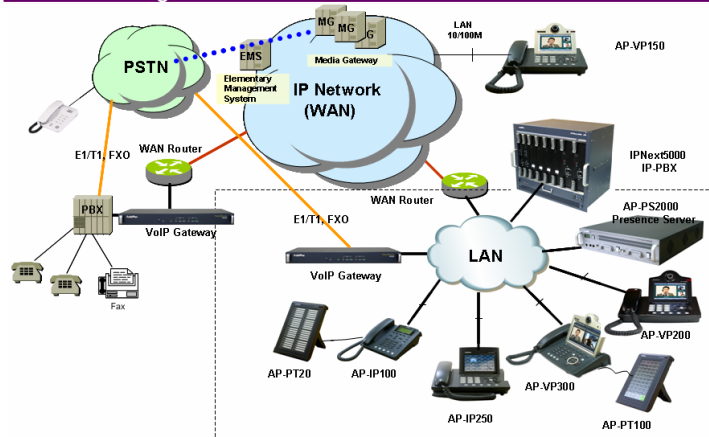
IP Telephony Services (Extended Speed Dialing Box)

Speed Dialing Service	Extended Speed Dialing Service Box for AddPac IP Phones, Video Phones
Speed Dialing Button	50 Buttons with User Presence Feature
User Presence Service	User Busy, User Ringing, Idle
User Presence Servers	IP-PBX built-in Presence Server, Independent Large Capacity Presence Server
IP-PBX Interworking	SSCP AddPac Proprietary Protocol
Presence Server Interworking	SSCP AddPac Proprietary Protocol
IP Terminal Interworking	SSCP AddPac Proprietary Protocol
User Registration	OSD, Web based Management
User Registration Profile	System Manager build User Profiles
Cascading	Multiple AP-PT100 Terminal Cascading Service Feature
	Ex: Single Terminal : 50 Speed-Dialing Service
	Two Terminals : 100 Speed-Dialing Service
Interphone Service	Point-to-Point Interphone Feature Support (Internal MIC and Speaker)
Headset Interface	Reserved for Future

WAN, IP Routing and Other Features

WAN Protocol	Point-to-Point Protocol (PPPoE) for AD
IP Routing	IPv4 Static and IEEE 802.1Q VLAN Routing
Network Management	Standard SNMP Agent (MIB v2) Support, Telnet, Web Based Management, Remote Firmware (APOS) Upgrade via FTP/TFTP Support
Security Features	IP Packet Filtering, Access List, Access Control and Data Protections, Enable/Disable for Specific Protocols
Operation & Management	Multi-level User Account Management, Auto-disconnect for Telnet/Console Sessions, PPP User Authentication Support (PAP/CHAP)
Other Features	Performance Analyzing (Process, CPU, Interface), Configuration Backup and Restore for APOS Management, Debugging and Diagnosis Features, System Booting/Rebooting through Watch-Dog, Data Logging Features, IP Traffic Statistics through Accounting Support
	DHCP Server and Relay, Network Address Translation (NAT), Port Address Translation (PAT), IEEE Standard Transparent Bridging (Spanning Tree Bridging and Concurrent Routing Bridging Protocol), Network Time Protocol (NTP), Cisco Style Command Line Interface (CLI), DNS Proxy, UPnP, MAC Address Filter Service etc.

Network Diagram



LCD, Network Interface of AP-PT100

