

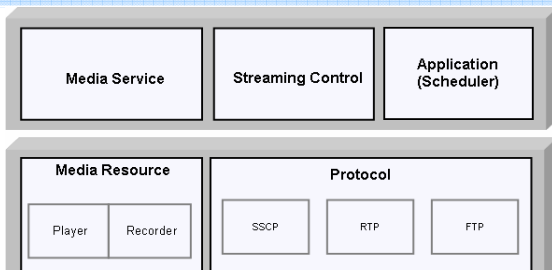


AP-RBT1000 Network IP Media Server

AP-RBT1000 of AddPac Technology is a network media server and video/voice media processing equipment based on the advanced next-generation all IP networks. This product together with IP-PBX, IP end-point terminals (VoIP gateways, Video phones, IP phones, etc) can be used for network based media Service like as Announcement, Multimedia Ring Back Tone Service including basic Voice Only Service, and Music on Hold. Under Next Generation IP Telephony Network Environment, AP-RBT1000 Network Media Server is applicable to government offices, medium-to-large enterprise, public enterprise, military, local government that want to dedicated powerful media service more than basic IP-PBX internal media service. AP-RBT1000 is configured with 2-port 10/100/1000 Mbps Gigabit interfaces, two (2) IDE-type 3.5-inch HDD module slots, and enables RAID1 configuration.

AP-RBT1000 media server together with AddPac IP Telephony Solution can be used for network based media service like as Announcement, Ring Back Tone Service, and Music on Hold. For providing remote media service with AddPac IP-PBX, AP-RBT1000 use SSCP (Smart Service Control Protocol) protocol that is AddPac Proprietary Protocol. AP-RBT1000 supports the G.711PCM, G.729 voice codec and H.263, MPEG4 video codec basically. New coming and end enhanced voice and video codec (for example, H.264 video codec, etc) will be added to service profile list according to user requirement and service environment. AP-RBT1000 provide the two(2) scheme to enroll personal or group media service file, for example, ring back tone service, to AP-RBT1000 server. In first case use pre-existed file such MP3, WMV for media service file. For this case, AP-RBT1000 provides the conversion software (MP3->PMA file, etc). MP3 and WMV file can be changed to AddPac PMA file format (G.711 based voice codec) to upload in AP-RBT1000 media server using AP-RBT1000 MS-Window based manager program. Second one is live encoding method using external media encoder (AddPac AP-VR1000, etc) which convert analog A/V signal to compressed digital signal.

As 'All IP' multimedia telephony environment is becoming a reality with advanced next generation networking technology, there is now critical demand of optimal integration of the solutions. AddPac Technology offers a range of solution covering VoIP and Media gateway, audio/video terminal equipments, external audio/video MCU, IP audio/video broadcasting and VoD solution, Network DVR, audio/video record&archive solution, Traffic controller, QoS equipment to meet customers' various communication requirements, so you can best optimize your network environment to maximize benefit from convergence of multimedia communication.



AP-RBT1000 Software Architecture

Product Highlights

- Embedded system based on high performance RISC CPU and Real-time OS
- Network multimedia server for IP multimedia telephony solution
- Support MoH (Music on Hold), Ringback Tone, Announcement, MMCID (Multimedia CID)
- Supports two(2) Gigabit Ethernet Interfaces
- Supports 3.5 inch IDE Hard Disk (RAID1 Configuration)
- Two(2) IDE-type Hard Disk Interface Slots
- LCD Panel and Blue Lamp for device status monitoring
- Supports the USB 2.0 Host Mode interface
- Supports SIP VoIP Signaling
- Smart Multimedia Manager S/W Program (Server/Client) (MS-Window)
- Inter-working with AddPac IP Telephony solution (IP-PBX, IP/Video Phones, VoIP gateway)
- Audio Codec Support : G.711, G.729
- Video Codec Support : H.263, MPEG
- Media file recording service using Media Encoder
- Schedule based Ringback Tone and Music on Hold Service
- Personal/Group Ringback Tone and Music on Hold Service

AP-RBT1000 Application

- IP Telephony System Integration
- IP based Call Center System
- Medium and Large Scale Enterprise IP-PBX Solution

Hardware Specification

- RISC Microprocessor (CPU)
- Memory
 - Boot memory 512Kbyte Flash Memory
 - Flash memory 16Mbyte Flash Memory
 - Main Memory 512Mbyte DDR1 SDRAM
 - HDD(RAID1) 3.5 Inch IDE HDD x 2
Hot-Swap Module Type
- Ethernet Interface
 - Two(2) x 10/100/1000Mbps Gigabit Ethernet (RJ-45)
- Console Port
 - RS-232C 1-Port Console (RJ-45)
- System Status Display LCD
- DSP Interface (Option)
 - DSP Module for Transcoding
 - Up to 64 Channel
 - Voice Codec : G.711, G.729, etc
- USB Interface
 - USB 2.0 Interface

Power & Operational environment

- Power Internal AC Power Supply
- Power Consumption 5V/10A, 12V/4A
- Operation Temperature 0°C ~ +45°C
- Storage Temperature -40°C ~ +85°C
- Humidity 5%~95%

Dimensions

- Dimension (H x D x H) : 440x445x80(mm)
- Weight : 9.5Kg

Media Service Features

- Media Server System Management
- Media Server Cluster Management
- Address Pool Management (search/modify/delete/save)
- Service Address Search, Media File Setup (RBT/MoH/CID)
- Media File Management and Replay Function
- RBT, MoH, CID Schedule Management
- Holiday Management (set holiday, repeat holiday)
- Announcement Package Management (search/modify/delete/save)
- Announcement Media File Setup
- Announcement Schedule Management
- Real-time Media Service List Search (RBT/MoH/CID/Announcement)
- Media Server System Performance and Status Monitoring (CPU/Memory/HDD/Traffic)

Multimedia Service

- Audio Codec : G.711, G.279
- Video Codec : H.263, MPEG4

Network Protocol & Service

- Data, Voice, Video and Security Support
- Standard Compliant IP Network Protocol

Network Management

- Standard SNMP Agent ((MIB v2) Support
- Console, Telnet, Web Based Management
- Remote Download via FTP/TFTP

Traffic QoS Control

- Traffic QoS Control Feature for Services
- Voice, Data, Video Prioritizing Control
- Various QoS Algorithm Support

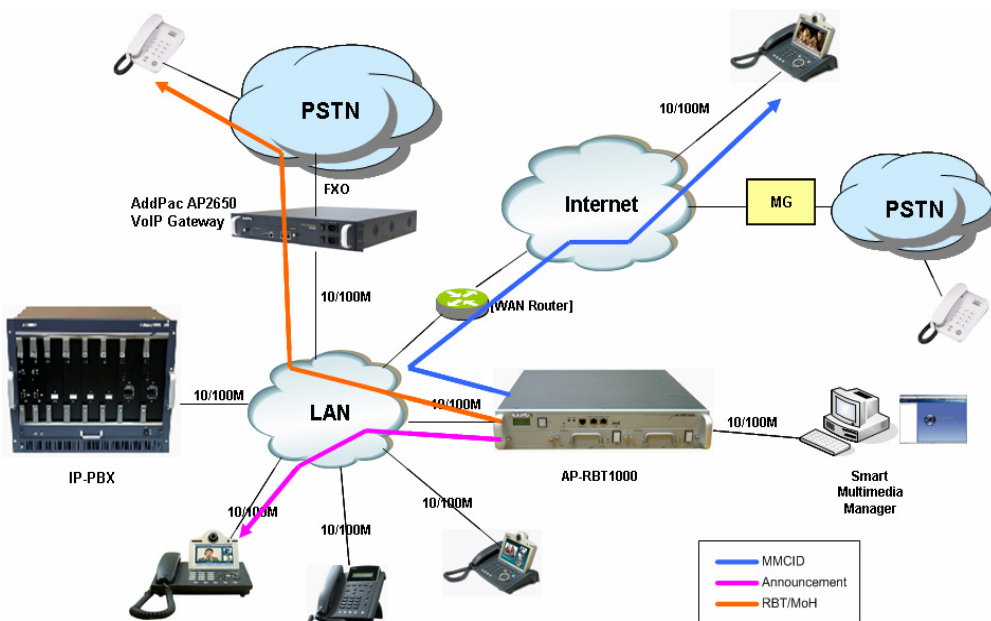
Security Feature

- IP Packet Filtering / Access List
- Access Control and Data Protections
- Enable/Disable for Specific Protocols
- Multi-level User Account Management
- Auto-disconnect for Telnet/Console Sessions
- PPP User Authentication Support
- Password Authentication Protocol (PAP)
- Challenge Handshake Authentication Protocol (CHAP)

Operation & Management

- Configuration Backup & Restore for APOS Managements
- Auto Upgrade via HTTP/HTTPS
- Debugging, System Auditing, and Diagnostics Support
- FTP/TFTP/Telnet/SSH Server and Client

AP-RBT1000 Network Diagram



Ordering Information

- AP-RBT1000 Network IP Media Server
 - Two(2) Gigabit Ethernet Port
 - One(1) Console Port
 - RISC CPU,
 - 16MB Flash,
 - 512MB DDR Memory
 - USB 2.0 Host Mode Interface
 - Two(2) HDD Module
- CAB-LAN Ethernet Cable
- CAB-CON RS-232C Console Cable