



AP-NR1000™

Network DVR Server

High-performance Network DVR Server Solution

Multi-Domain Network DVR Architecture



AddPac

AddPac Technology

2006, Sales and Marketing

Hardware Specification

AP-NR1000 Network DVR Server

64bit
CPU

- **RISC Microprocessor Computing Power**
- **Main Chassis**
 - **Network Interface**
 - Two(2) 10/100/1000Mbps Gigabit Ethernet
 - One(1) RS-232C Console (RJ45)
 - **USB Host Mode Interface for DVD Backup, etc**
 - **Two(4) Hard Disk Interface Slot for RAID1 Configuration**



Smart DVR Viewer

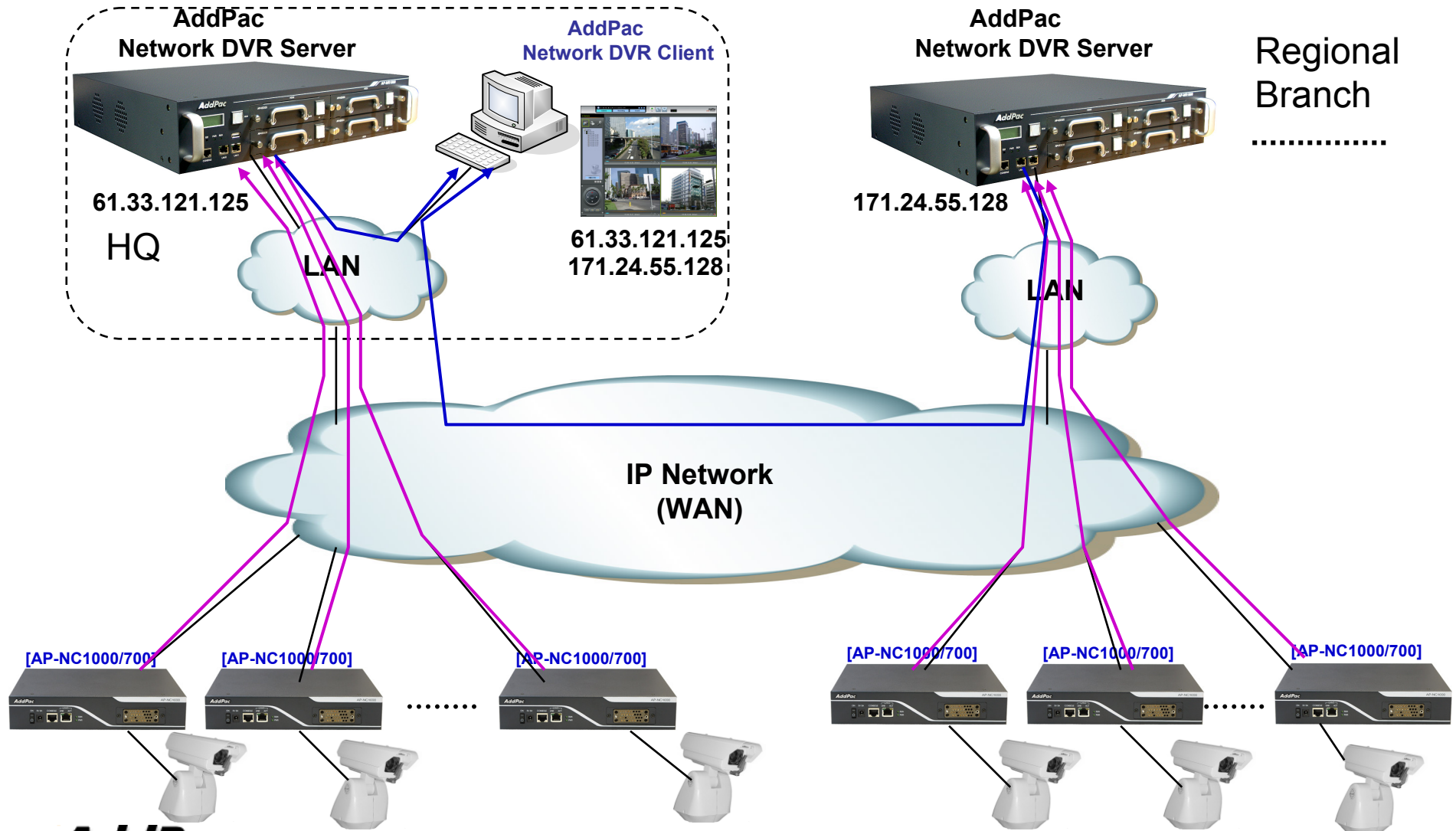
AP-NR1000 Network DVR Server



- Multi-Network DVR Server Support
- PAN/TILT/ZOOM Control, Layout & Screen Mode Change
- Error Concealment Support
- Motion Detection & Tracking
- Multi-Live View, Multi-Recording View, Time Synchronization View
- Fast Search (up to 16 time), Jog Shuttle Slow Motion & Rewind
- Intelligent Search using Motion Detection
- Recording ZOOM View
- Audio/Video(MPEG4) Support.

Multi-Domain Network DVR Arch.

AP-NR1000 Network DVR Server



AddPac

www.addpac.com

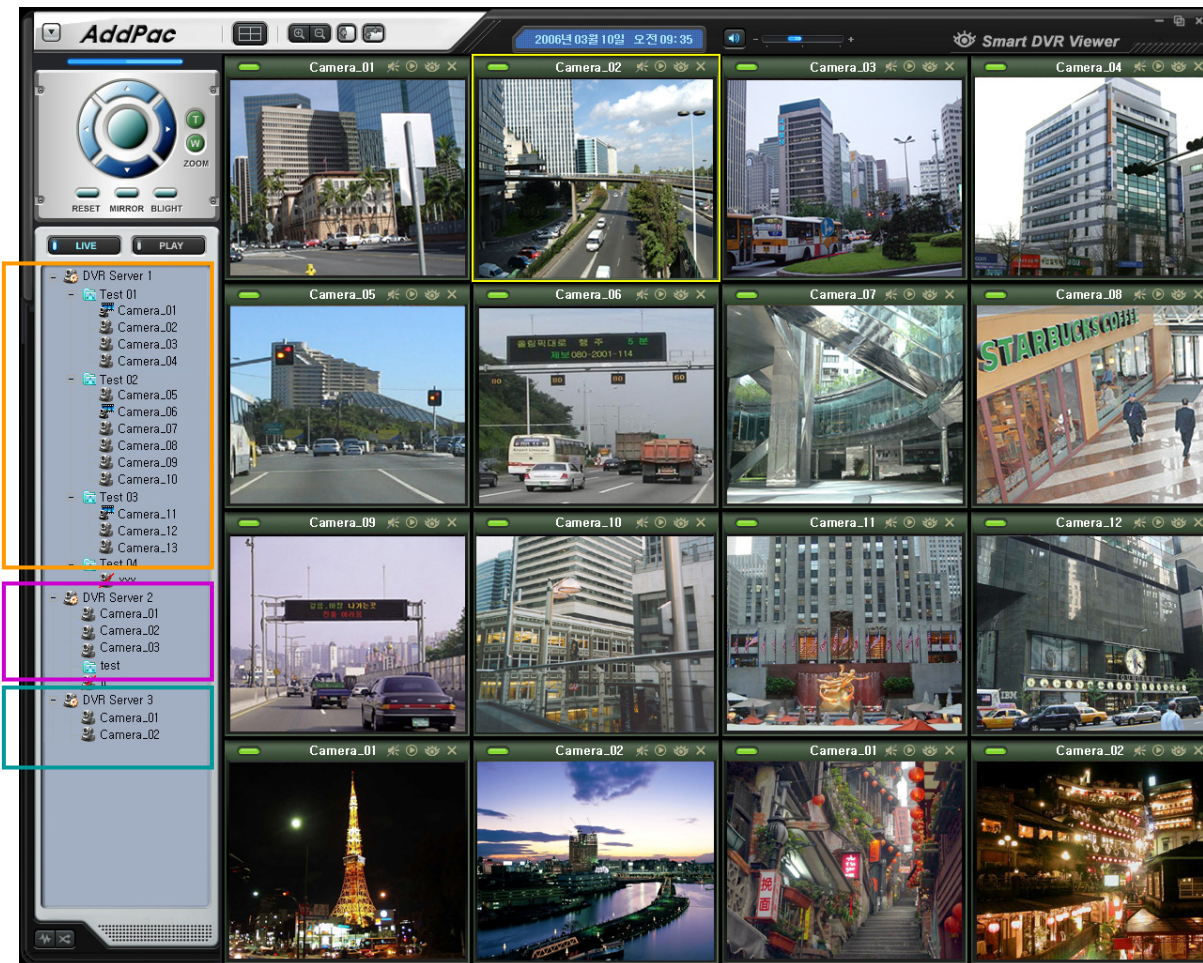
Multi-Domain Network DVR Arch.

AP-NR1000 Network DVR Server

Network
DVR Server 1

Network
DVR Server 2

Network
DVR Server 3



AP-NR1000™ Network DVR Server

Thank you!

AddPac Technology Co., Ltd.
Sales and Marketing

Phone +82.2.568.3848 (KOREA)

FAX +82.2.568.3847 (KOREA)

E-mail sales@addpac.com