



AP-RS2000 RTP Proxy Server

AP-RS2000 RTP Proxy Server is an advanced application-aware network device that allows you to resolve private IP address problems when private IP terminals are used along with public IP terminals in a call manager (e.g. SIP proxy server) environment. An individual 4-Port 10/100Mbps Fast Ethernet interface and a RS-232C console interface for Command Line Interface (CLI) are installed into AP-RS2000, which is available in various IP telephony network environment.

Since the enterprise IP telephony network environment configured with an SIP proxy server and IP terminals such as IP phone, Video Phone require large number of IP address, either a private IP address in NAT or IPv6 address must be supported to the enterprise networks due to the deficient resources of a public IP address. In such a private IP address environment, an RTP proxy server is required for reliable multimedia communication between IP endpoint terminals.

AP-RS2000 RTP Proxy Server of AddPac Technology is used to make a communication between a private IP terminal and a public IP terminal, make a communication between a private IP terminal and a public IP terminal in NAT environment, make a communication between private IP terminals, make audio/video broadcasting in private IP and public IP environments, and to enable audio/video conference calls in private IP and public IP environment. AP-RS2000 can be operated regardless of whether VoIP signaling protocol is H.323, SIP or MGCP, and supports dual address system of IP version 4 and IP version 6 address.

AP-RS2000 supports the latest features and advanced service features ranging from the ones(e.g. a variety of network protocols, better Quality of Service (QoS), and the error concealment technology) specialized for an environment for video communications to the Virtual Router Redundancy Protocol (VRRP) service for preventing a failure and load balancing. AP-RS2000 is an integrated, feature-rich network equipment delivering routing, NAT/PAT, DHCP Server/Relay, Public IP sharing, VRRP and QoS. In today's mixed network of xDSL, Cable, FTTH, Metro Ethernet, Metro ATM, Leased line and dynamic IP environment, not only the ample network service features, but also high-end QoS(Quality of Service) and security features are requested. Based on Four(4) 10/100Mbps Fast Ethernet ports, AP-RS2000 offers integrated network and security service of LAN-to-LAN routing, bridge and NAT/PAT in addition to RTP Proxy service.

As 'All IP' multimedia telephony environment is becoming a reality with advanced next generation networking technology, there is now critical demand of optimal integration of the solutions. AddPac Technology offers a range of solution covering VoIP and Media gateway, audio/video terminal equipments, external audio/video MCU, IP audio/video broadcasting and audio/video recording&archive solution, Traffic controller, QoS equipment to meet customers' various communication requirements, so you can best optimize your network environment to maximize benefit from convergence of multimedia communication.

Product Highlights

- RTP Proxy Service for Private IP Address, IPv6 Address
 - communication between Private IP terminal and Public IP address terminal
 - communication between Private IP terminal and Public IP address terminal in NAT environment
 - communication between Private IP terminals in NAT environment
 - communication between IPv6 terminal and IPv4 terminal
 - RTP broadcasting of Private IP and Public IP terminals
- Embedded system based on high performance RISC CPU
- Supports Four (4) Fast Ethernet Interfaces
- RS-232C Console Interface for CLI (Command Line Interface)
- Inter-working with AddPac IP Telephony solution (IP-PBX, IP/Video Phones, Smart Communicator)
- Voice Recording Server Inter-working Service (AP-NR700, AP-NR500, etc)
- VRRP Service for Load Balancing and Auto Recovery
- Remote Management using Console, Rlogin, Telnet
- Smart Multimedia Manager Program (MS-Window)

AP-RS2000 Application

- IP Telephony System Integration
- Medium and Large Scale Enterprise IP-PBX Solution

Hardware Specifications

CPU	High Performance RISC Processor
Memory	512KB Boot Memory 8MB Flash Memory 64MB SDRAM Main Memory
Network Interface	1-port 10/100/1000Mbps Gigabit Ethernet (LAN 0) 1-port 10/100/1000Mbps Gigabit Ethernet (LAN 1)
Console Port	1-Port RS-232C Console Interface (RJ45)
Operation Environment	Temperature 0°C ~ +45°C (operating), -40°C ~ +85°C (storage), Humidity 5% ~ 95%
Power Supply	AC110~220VAC 50/60Hz Free Voltage, 25Watt
Dimension	65mm x 440mm x 300mm (H x W x D)
Weight	3.92 Kg

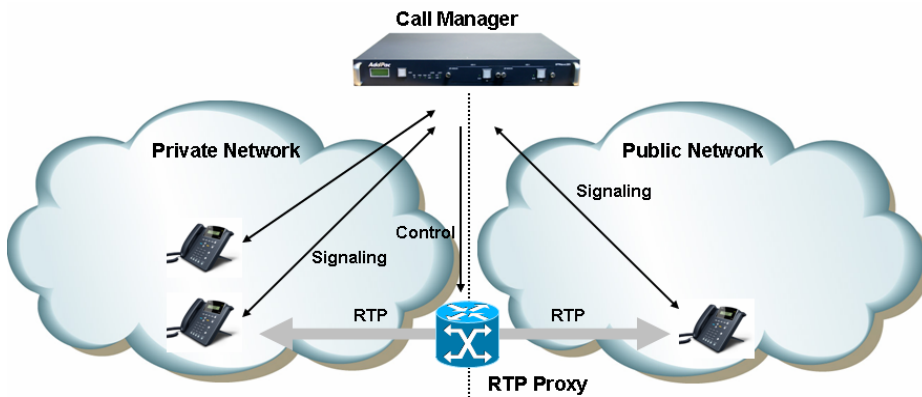
RTP Proxy Service

RTP Proxy Service	between Private IP terminal and Public IP address terminal between Private IP terminal and Public IP address terminal in NAT environment between Private IP terminals in NAT environment between IPv6 terminal and IPv4 terminal RTP broadcasting of Private IP and Public IP terminals
-------------------	---

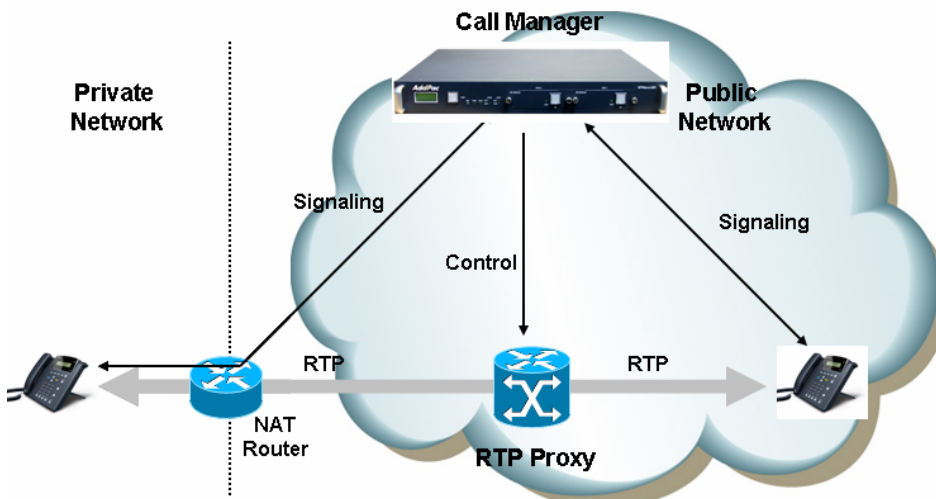
WAN, IP Routing and Other Features

WAN Protocol	Point-to-Point Protocol (PPPoE) for ADSL
IP Routing	IPv4 Static and IEEE 802.1Q VLAN Routing
Network Management	Standard SNMP Agent (MIB v2) Support, Telnet, Web Based Management, Remote Firmware (APOS) Upgrade via FTP/TFTP Support
Security Features	IP Packet Filtering, Access List, Access Control and Data Protections, Enable/Disable for Specific Protocols
Operation & Management	Multi-level User Account Management, Auto-disconnect for Telnet/Console Sessions, PPP User Authentication Support (PAP/CHAP)
Other Features	Performance Analyzing (Process, CPU, Interface), Configuration Backup and Restore for APOS Management, Debugging and Diagnosis Features, System Booting/Rebooting through Watch-Dog, Data Logging Features, IP Traffic Statistics through Accounting Support
	DHCP Server and Relay, Network Address Translation (NAT), Port Address Translation (PAT), IEEE Standard Transparent Bridging (Spanning Tree Bridging and Concurrent Routing Bridging Protocol), Network Time Protocol (NTP), Cisco Style Command Line Interface (CLI), DNS Proxy, UPnP, MAC Address Filter Service etc.

AP-RS2000 Network Diagram



Public/Private RTP Proxy Service without NAT



Asymmetric/Symmetric NAT

Ordering Information

- AP-RS2000 RTP Proxy Server
 - High Performance RISC CPU
 - Four(4) Fast Ethernet Port
 - One(1) RS232C Console Port
 - 8MB Flash Memory
 - 64MB SDRAM Memory
- CAB-LAN Ethernet Cable
- CAB-CON RS-232C Console Cable