



# AP-RS2000™

## RTP Proxy Server

High Performance RTP Proxy Server Solution

RTP Proxy Server for Private IP Problem Solving



# **AddPac**

**AddPac Technology**

2005, Sales and Marketing

[www.addpac.com](http://www.addpac.com)

# Contents

## AP-RS2000 RTP Proxy Server

- Product Overview
- Hardware Specification
- RTP Proxy Configuration
  - Public/Private RTP proxy
  - Asymmetric/Symmetric NAT
  - RTP Broadcast
  - RTP Conference
  - IPv4/IPv6 RTP Proxy
- Signal Flow Diagram
- Ordering Information

# Product Overview

## AP-RS2000 RTP Proxy Server

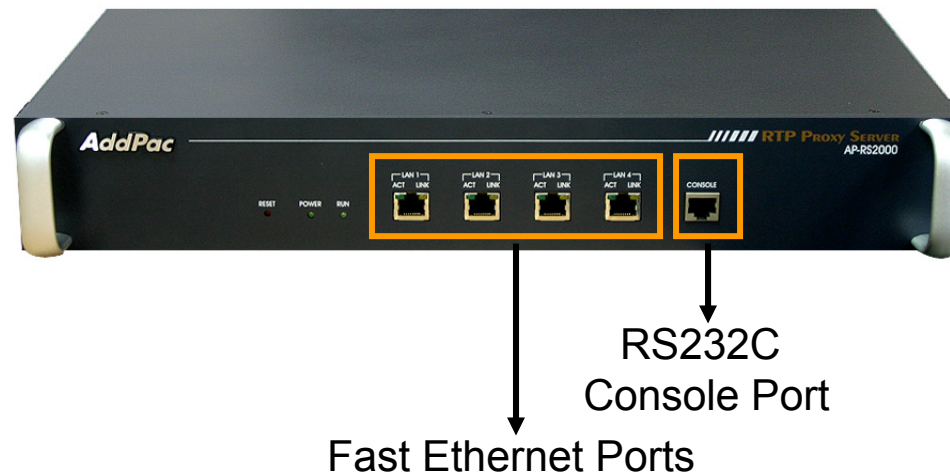
- Protocol Independence (H.323, SIP, MGCP)
- Support RTP Proxy without NAT
- Support Symmetric / Asymmetric NAT
- Support IPv4/IPv6 RTP Proxy
- Support RTP Broadcast
- Support RTP Conference
- High Performance
- Firmware Upgradeable Architecture

# Hardware Specification

## AP-RS2000 RTP Proxy Server

64bit  
CPU

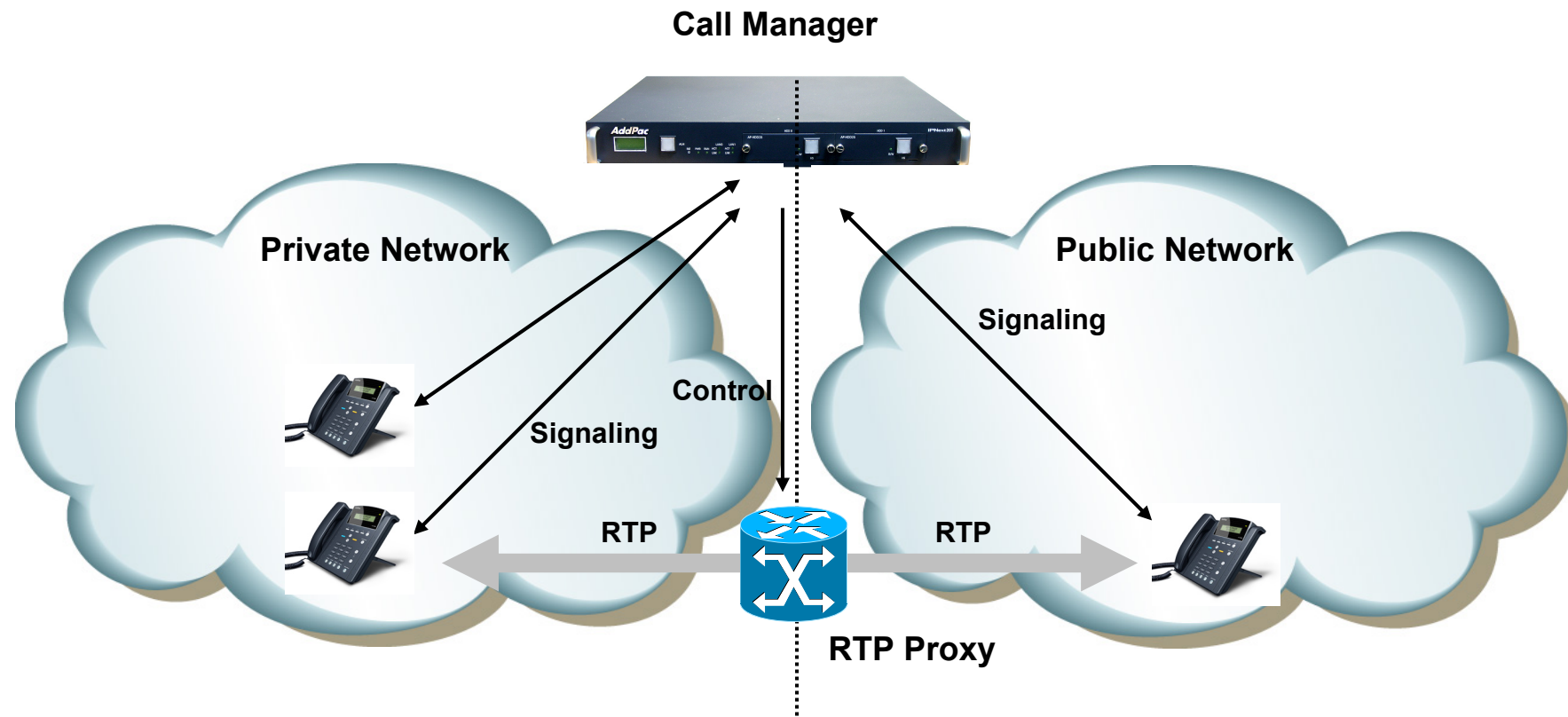
- **RISC Microprocessor Computing Power**
- **Network Interface**
  - Four(4) 10/100Mbps Fast Ethernet
  - One(1) RS-232C Console
- **Memory Interface**
  - Flash Memory : 8Mbyte
  - Main Memory : 128Mbyte High Speed SRAM
  - Boot Loader : 512K Flash Memory



# RTP Proxy Configuration

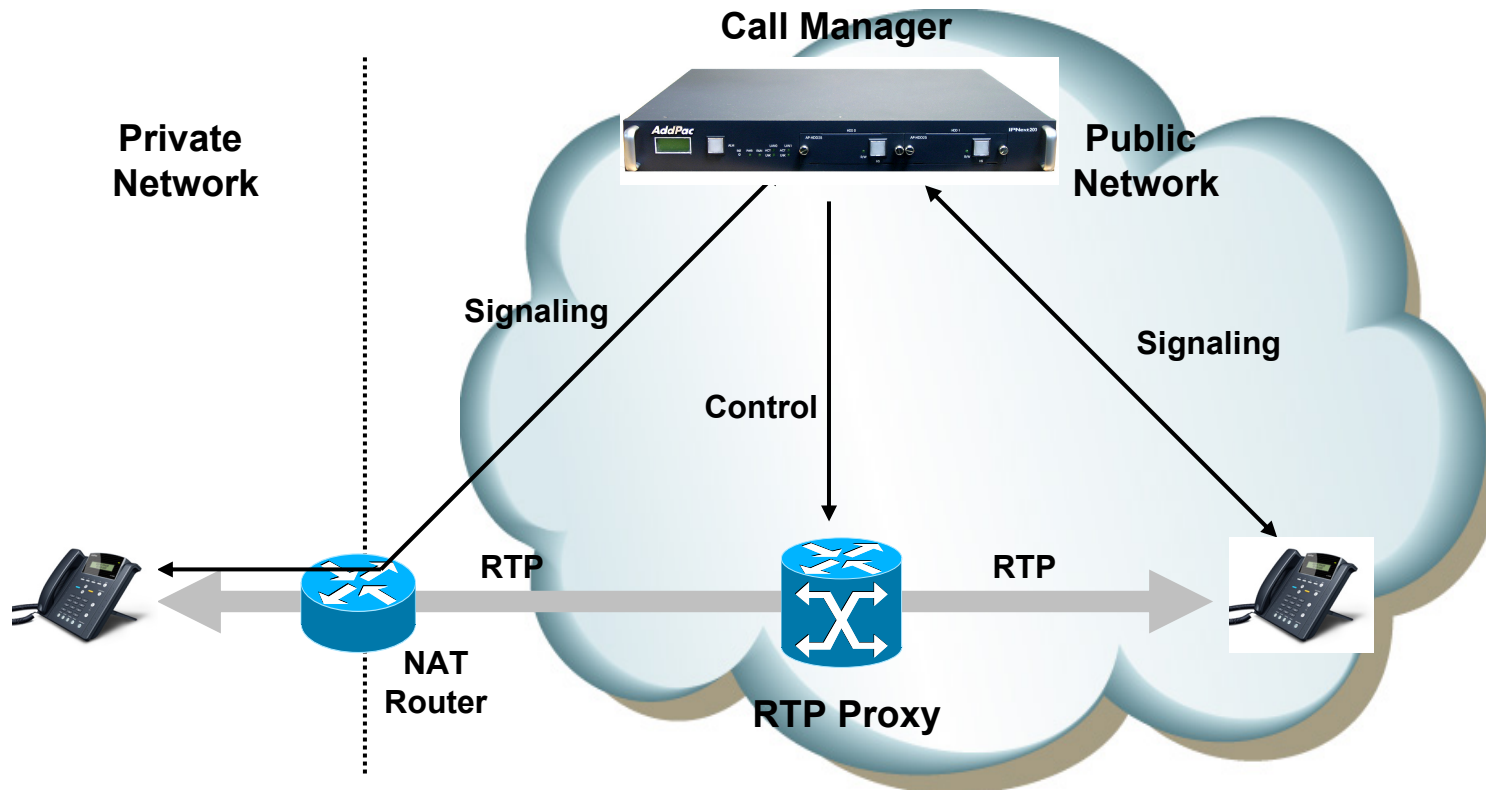


# Public/Private RTP Proxy without NAT Router



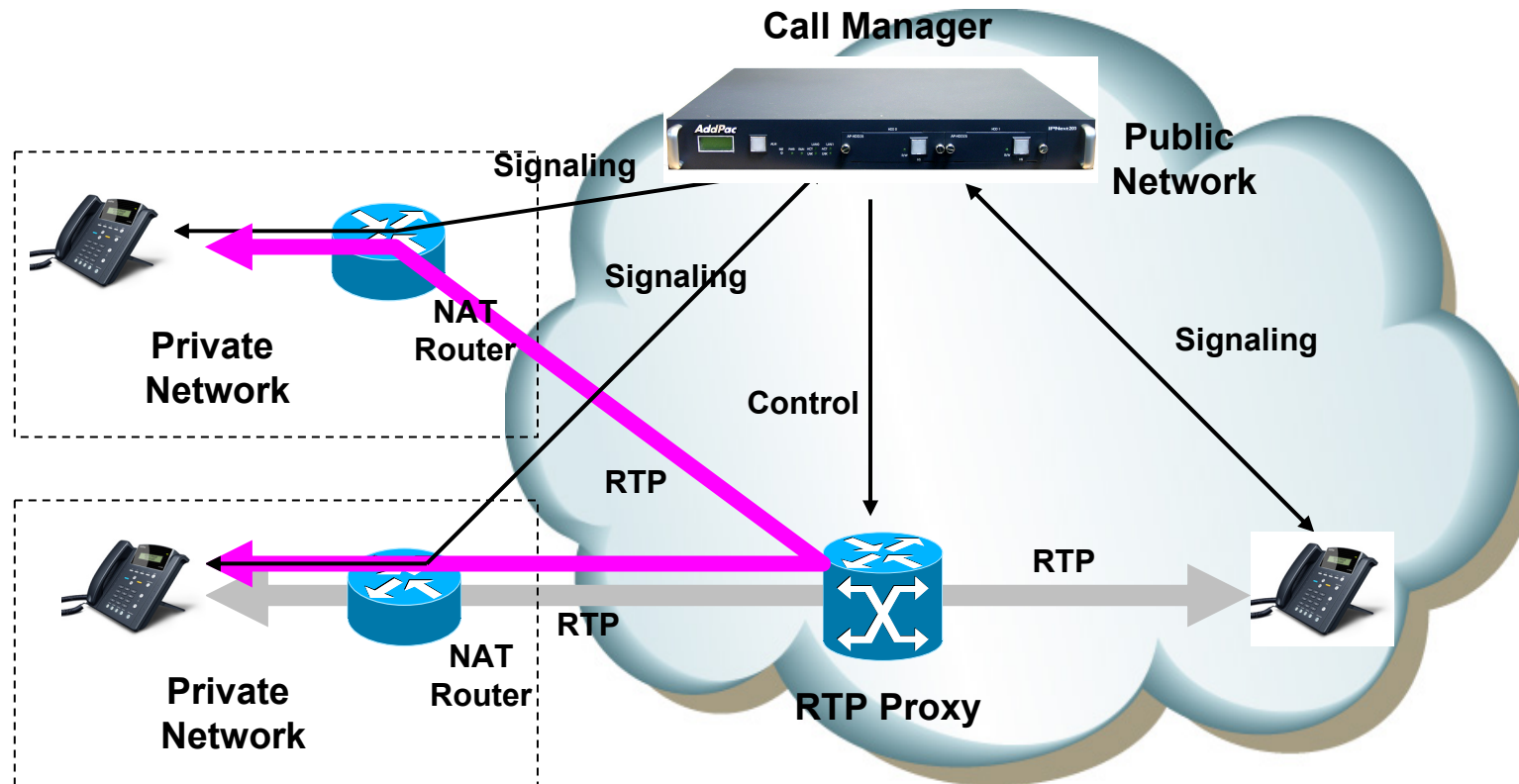
- Located between public and private network
- Call manager and RTP proxy has public and private address
- Call manager determine that the call is internal or external

# Asymmetric/Symmetric NAT



- Located in public network
- RTP Proxy has single public address
- Auto detect for asymmetric NAT via incoming RTP packet

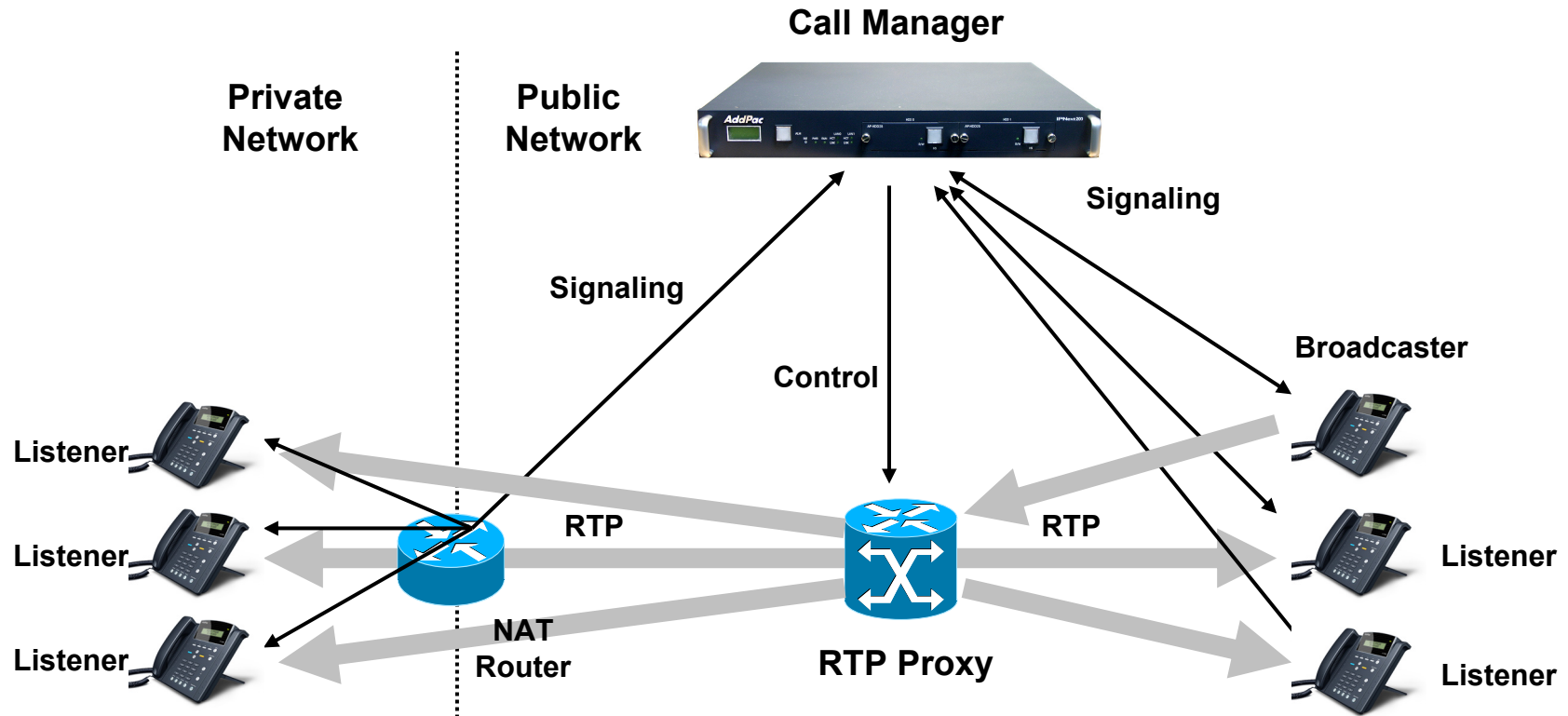
# RTP Proxy Communication between Private IP



- Located in public network
- RTP Proxy has single public address
- Auto detect for asymmetric NAT via incoming RTP packet

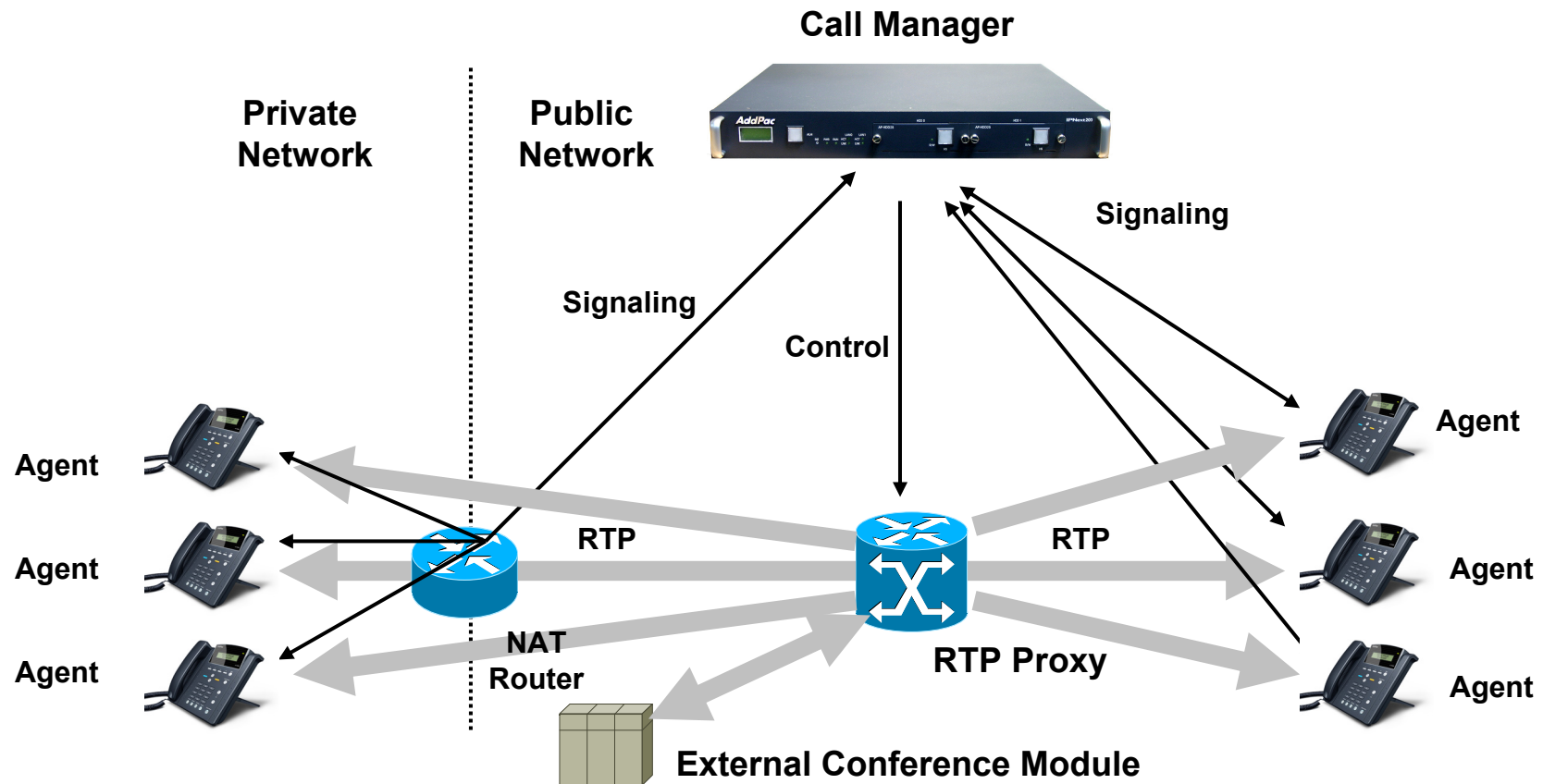


# RTP Broadcast



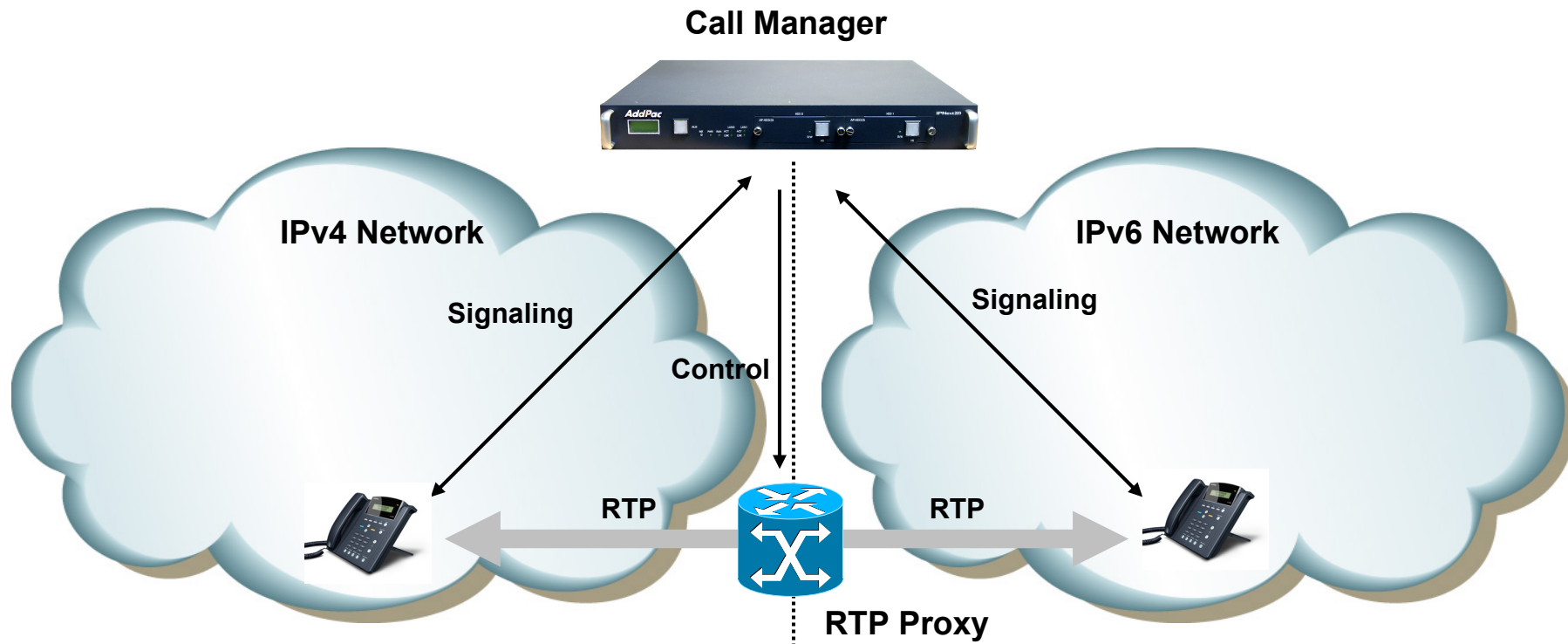
- Call Manager set the broadcaster and listener via control message
- One broadcaster and multiple listener
- RTP proxy relay for broadcaster RTP traffic
- RTP proxy never relay for listener traffic

# RTP Conference



- RTP Proxy communicate with external/internal conference module (mixer)
- Conference support for private address, asymmetric NAT

# IPv4/IPv6 RTP Proxy

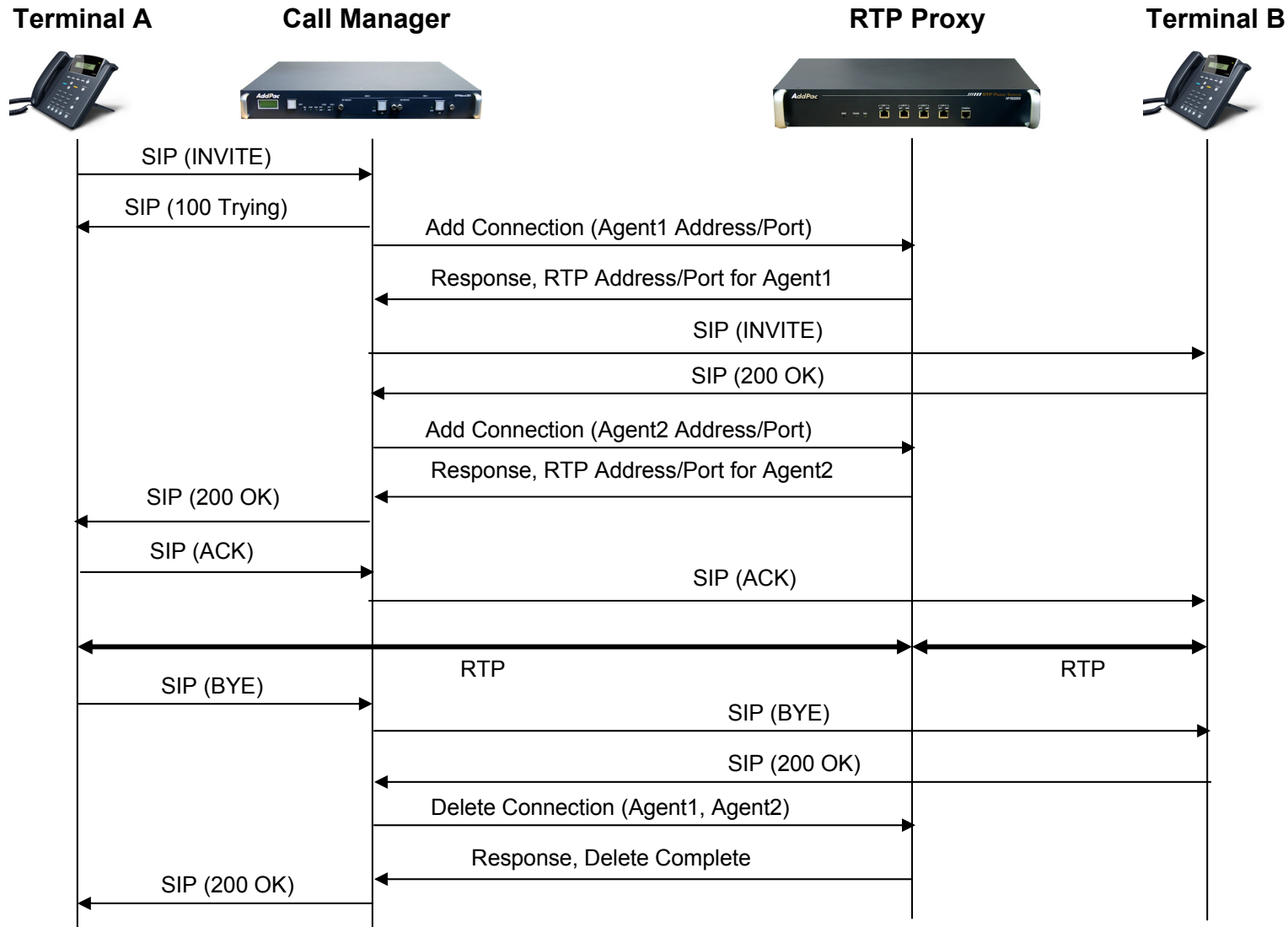


- Call manager and RTP proxy has IPv4 and IPv6 address
- Support RTP broadcasting

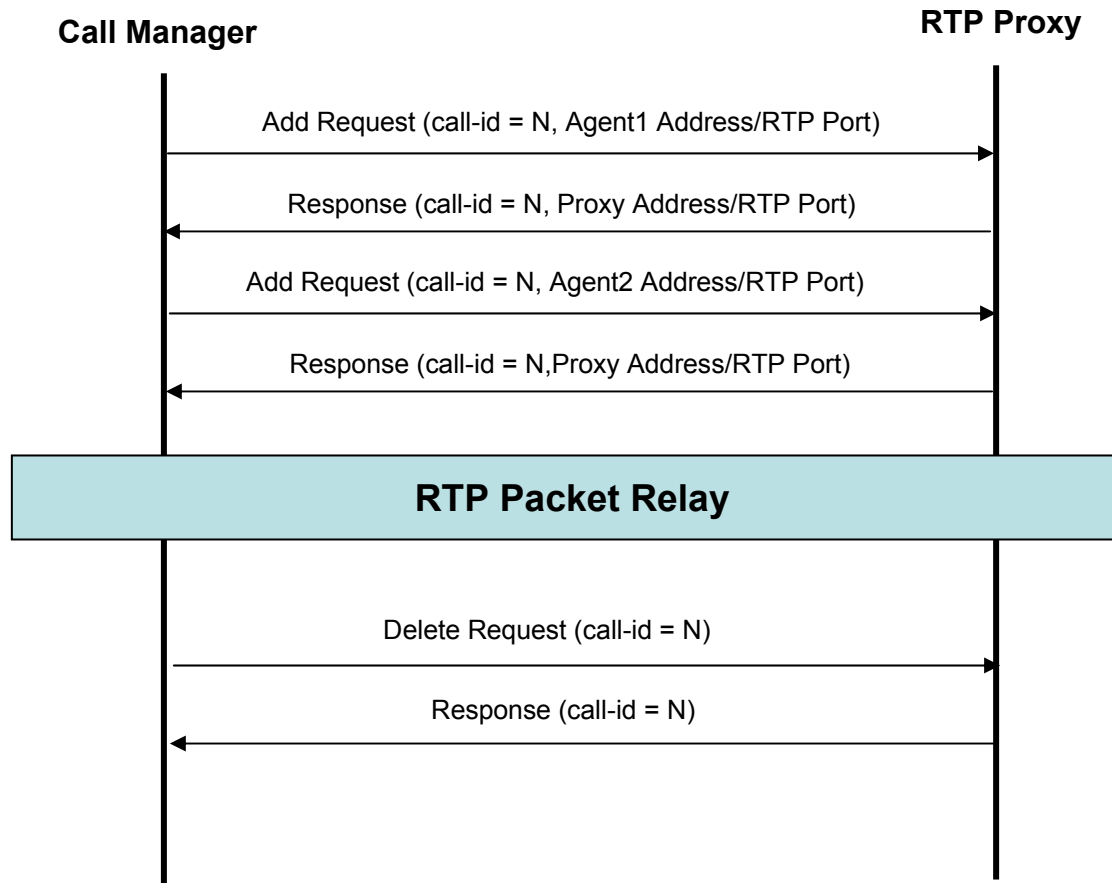


# Signal Flow Diagram

# Signal Flow Diagram (Ex: SIP)



# RTP Proxy Control Message



# Ordering Information

- **AP-RS2000 RTP Proxy Server Hardware**
  - AP-RS2000 RTP Proxy Server Main Body
  - 64bit RISC Microprocessor Architecture
  - 4-ports 10/100Mbps Fast Ethernet and 1-port RS-232C Console
  - Built-In Free Voltage Power Supply
  - Including Network Cable Set, etc.
- **Built-in APOS Internetworking Software for AP-RS2000**
- **Including 1 Year Hardware Warranty**
- **Product Documents**
  - Install and Operation Guide (PDF)
- **Pricing**
  - AddPac Technology Regional Sales Manager
  - Authorized Sales and Marketing Representatives
  - Please Contact [www.addpac.com](http://www.addpac.com)



# Thank you!

**AddPac Technology Co., Ltd.**  
Sales and Marketing

Phone +82.2.568.3848 (KOREA)

FAX +82.2.568.3847 (KOREA)

E-mail [sales@addpac.com](mailto:sales@addpac.com)