



# AP-VP350™

## MCU Video Phone

High Performance Broadband Convergence Network  
MCU Video Phone Solution

## Wireless LAN Features



**USB WiFi LAN**

# **AddPac**

**AddPac Technology**

2006, Sales and Marketing

[www.addpac.com](http://www.addpac.com)

# Contents

- AP-VP350 H/W Specification
- Wireless LAN Specification
- BSS/IBSS Network Diagram
- Performance Estimation

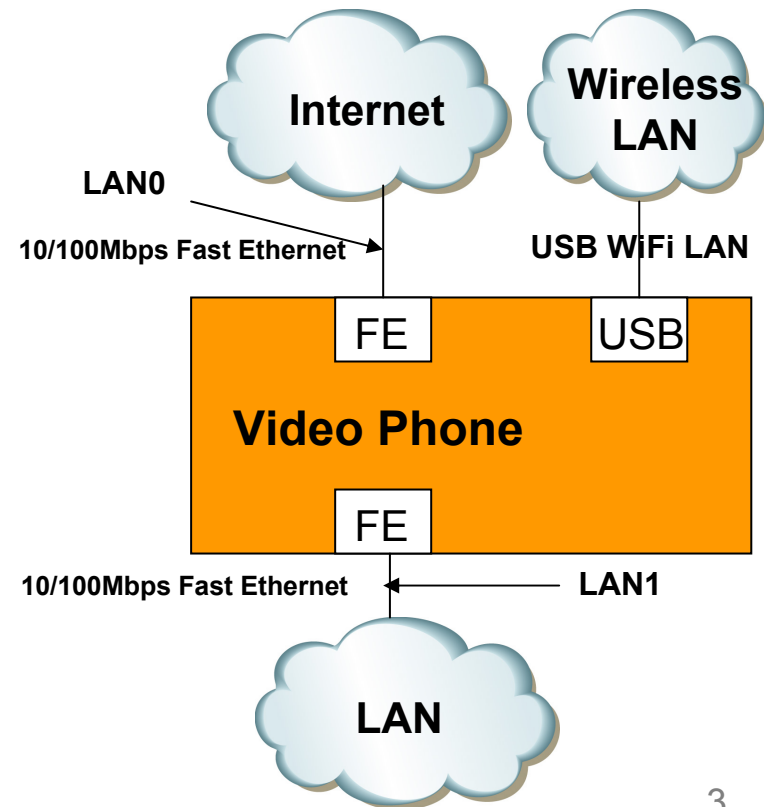


# AP-VP350 H/W Specification

- **RISC+DSP (Audio Codec) Microprocessor Computing Power(Dual Processor Architecture)**
- **Powerful DSP for Video Signal Processing**
- **“7Inch LCD Monitor Display**
- **Dual Monitor Emulation for Document Share, Broadcasting, VoD Application, etc.**
- **PSTN Interface**
  - FXO Interface
- **High quality Audio and Video Interface**
  - RCA, S-Video Video Out, RCA Video In
  - 3.5mm Audio In/Out
- **USB 1.1 Host Mode Interface**
- **Network Interface**
  - Two(2) 10/100Mbps Fast Ethernet
  - One(1) RS-232C Console(RJ45)
- **Power Supply**
  - External Power Adaptor (5V, 5A)

**AddPac**

[www.addpac.com](http://www.addpac.com)



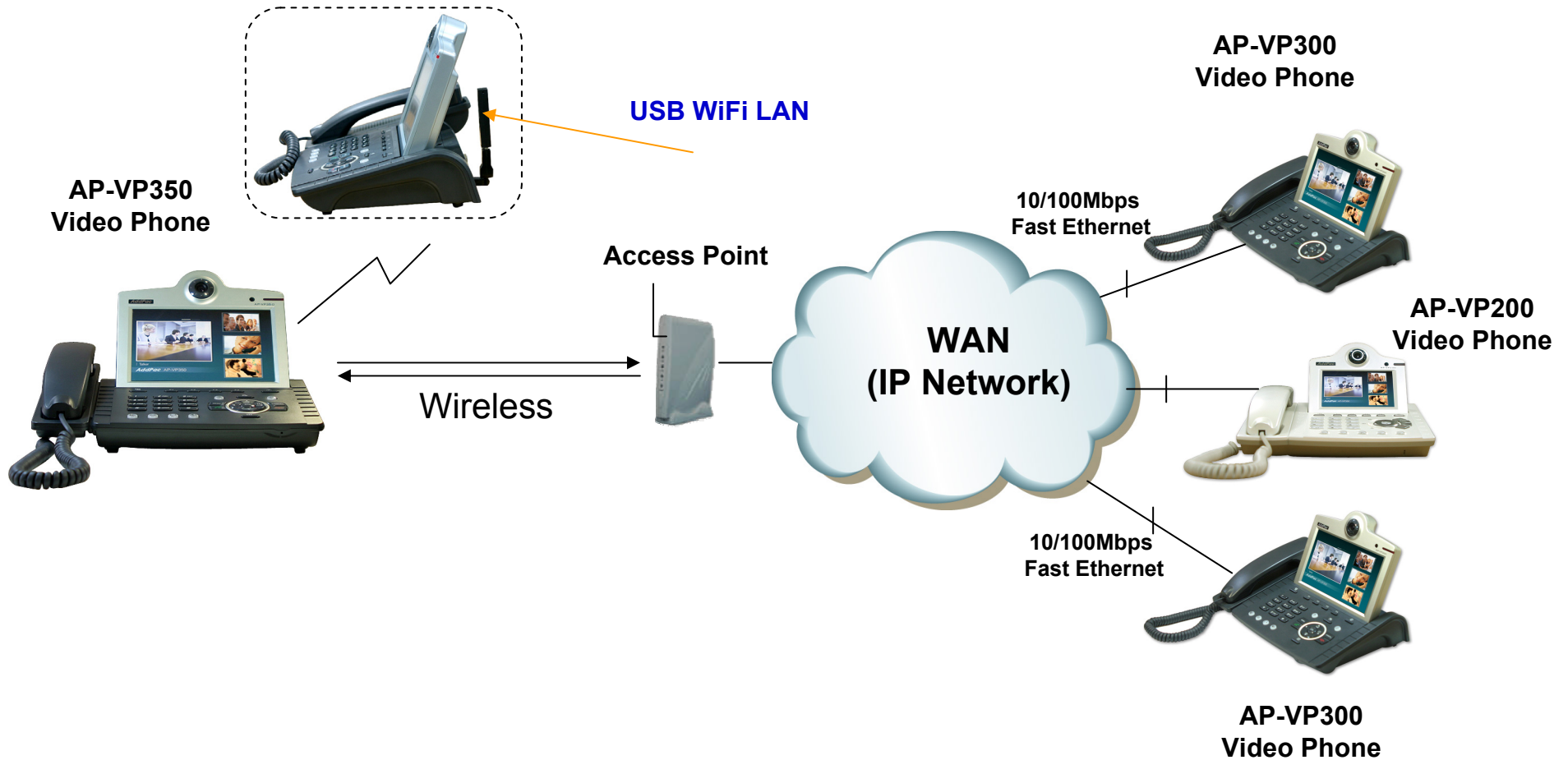
# Wireless LAN Specification

## AP-VP350 Premium IP Video Phone

- IEEE 802.11b/g Support
  - BSS(Base Service Set. Infra-structure)
  - IBSS(Independent BSS. ad-hoc)
  - Authentication/Security Mode
    - Current : Open/None, Open/WEP(40B/104B)
    - Developing : WPAPSK/AES
- Chipset Support
  - Chipset : ralinktech RT2570 USB
  - USB Devices : ASUS WL-167g, D-Link DWL-G122

# BSS Network Diagram

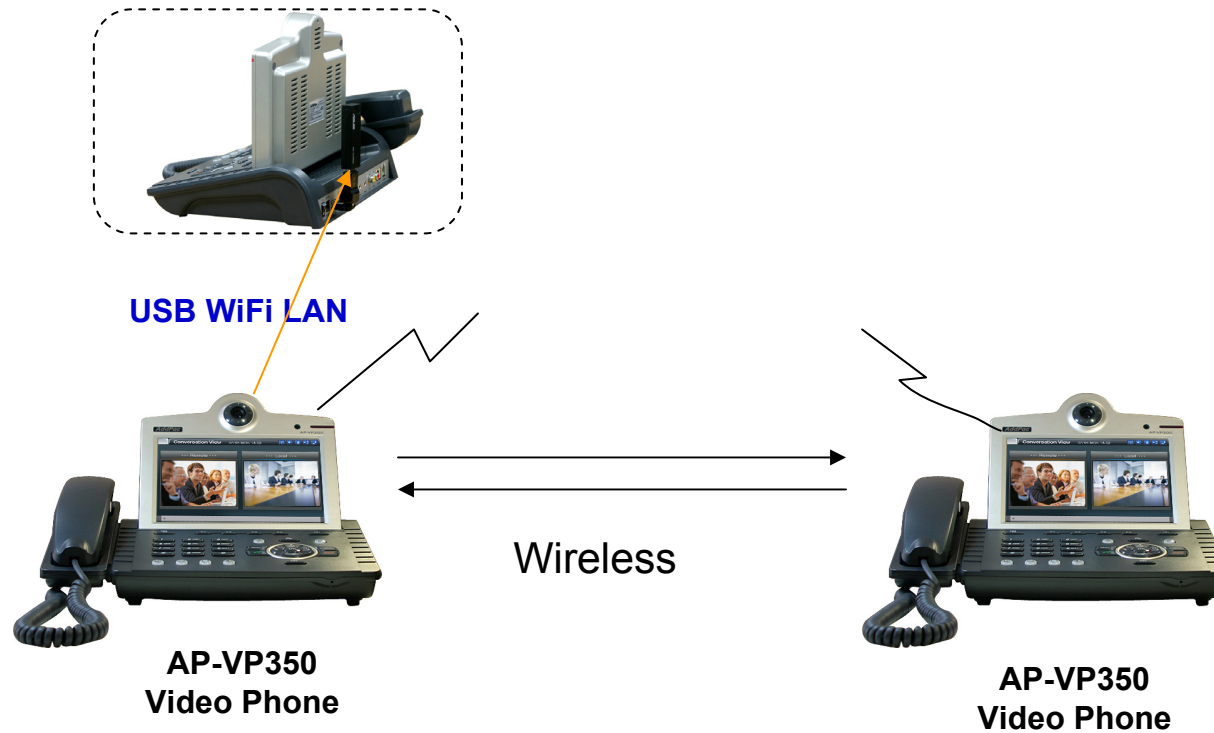
## AP-VP350 Premium IP Video Phone



**BSS (Base Station Set) Configuration**

# IBSS Network Diagram

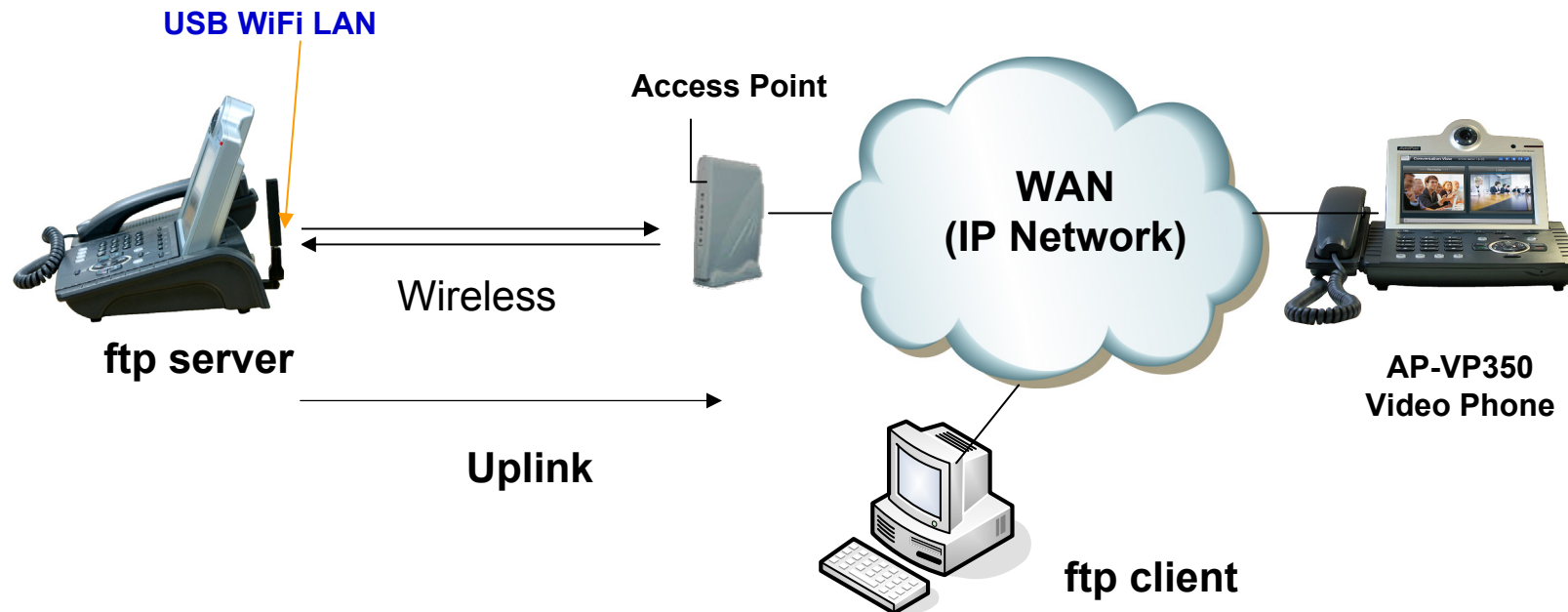
## AP-VP350 Premium IP Video Phone



**IBSS (Independent Base Station Set) Configuration**

# Performance Estimation

## AP-VP350 Premium IP Video Phone



Video Communication : bidirectional 2Mbps

Data throughput : ftp get 330 ~ 450kB/s, put 330kB/s

# Video Phone Series

# Thank you!

**AddPac Technology Co., Ltd.**  
Sales and Marketing

Phone +82.2.568.3848 (KOREA)

FAX +82.2.568.3847 (KOREA)

E-mail [sales@addpac.com](mailto:sales@addpac.com)