



IPNext 200 IP-PBX

With the growth of business customers' needs for IP telephony and broadband converged network applications, the trends towards 'All IP' communication environment are becoming a reality keeping pace with the technological advance of next generation networking. IPNext 200 IP-PBX delivers a new cost effective IP communication solution for 'All IP' environment as a core system of AddPac's comprehensive IP solution which features various end user terminal equipments such as AP-VP300 IP video phone and AP-IP300, AP-IP200 IP phone etc.

The IPNext 200 centralized total solution brings not only conventional PBX features but also an extended functionality of collaborative IP communication delivering audio broadcasting service. Designed on the foundation of high performance embedded RISC CPU, IPNext200 supports various VoIP modules and adopts the dual HDD fail safe system (RAID1 configuration). It's ideal IP-PBX system for small and medium enterprise taking a full advantage of new 'all-in-one' concept with voice call handling, data networking, audio broadcasting integrated.

AddPac IPNext 200 IP-PBX comes with two(2) 2.5 inch HDD module slot (RAID 1) at front part of chassis. It also comes with two(2) VoIP interface module slots for 4-Port FXS, FXO, E&M voice Interface card, two(2) 10/100Mbps fast ethernet port and console port for CLI (command line Interface) at the rear part. It features a wide variety of **call scenarios** such as **Basic Call, Coloring Service, Music on Hold, Blind Transfer, Call Pickup, Group Call Pickup, Consult Call, Switching Call, Consult Transfer, Call Waiting, Call Waiting Notify, Call Park, Call Pickup Remote, Hunt Group**, supporting SIP, H.323 concurrently. In addition, 2.5 inch Dual IDE high capacity HDD for RAID 1 configuration is well-suited to the services which need sizable memory capacity such as Voice Mail ensuring the system consistency and the high availability. Further more, IPNext 200 supports the internal built-in Hardware MCU for multi-party voice conference call up to 8 subscribers optionally.



AP-VP300



AP-IP300



AP-IP200

Product Highlights

- New 'All-In-One' IP-PBX Concept with Voice, Audio, Data Integrated for Complete IP Telephony System
- Hot-Swap IDE type dual 2.5 Inch HDD (RAID1 Configuration Available)
- Two(2) VoIP Interface Module Slot (4-Port FXS, FXO, E&M, etc)
- Upgradeable System Architecture based on Programmable RISC & DSP
- Two(2) 10/100Mbps Fast Ethernet Interface
- RS-232C Console Interface for CLI (Command Line Interface)
- Voice Mail Function
- SIP and H.323 Signaling
- Various IP Telephony Call Scenario (Coloring, Music on Hold, Call Transfer, etc)
- Powerful IVR service via Scenario Editor
- Multi-Party Voice Conference via Internal Hardware type MCU Module (DSP, Two(2) session 3,4 party) (G.723.1, G.729, G.726, G.711,etc) : 옵션
- Remote Firmware Upgrade Through FTP & TFTP Protocol
- CISCO-style CLI (Command Line Interface)
- Essential Scalability Features such as DHCP Server & Relay, NAT/PAT, IEEE Transparent Bridging, and Debugging/Diagnostics, etc.

IPNext200 Application

- IP Telephony System Integration
- IP Audio Broadcasting Terminal
- IP based Call Center System

Hardware Specification

- RISC Microprocessor (CPU)
- Memory
 - Boot memory 512Kbyte Flash Memory
 - Flash memory 16Mbyte Flash Memory
 - Main Memory 64/128Mbyte SDRAM
 - HDD(RAID1) 2.5 Inch IDE HDD x 2
Hot-Swap Module Type
- Ethernet Interface
 - 10/100Mbps 2-Port Ethernet (RJ-45)
- Console Port
 - RS-232C 1-Port Console (RJ-45)
- System Status Display LCD
 - Orange LCD Panel
- Two(2) VoIP Interface Module Slot
 - 4-Port FXS, FXO, E&M Module
 - 2-Port FXS/2-Port FXO Module
 - Various Broadcasting Module

Power & Operational environment

- Power Internal Free Voltage Power
- Power Consumption
- Operation Temperature 0°C ~ +45°C
- Storage Temperature -40°C ~ +85°C
- Humidity 5%~95%

Dimensions

- Dimension (H x W x D) : 52 x 440 x 425(mm)
- Weight : 6Kg

Voice over IP Service

- H.323, SIP VoIP Signaling Protocol
- VAD, DTMF, CNG, G.168
- Voice Codec : G.723.1, G.729, G.726, G.711,
- Various VoIP Features
- Interoperable with Diverse VoIP Gateways
- Interoperable with Diverse VoIP Gatekeeper, SIP Proxy

IP Telephony Service

- Speed Dial, Phone Book
- Voice Mail
- Basic Call Scenario, Coloring Service Music on Hold, Blind Transfer, Call Pickup
- Consult Call, Switching Call, Consult Transfer
- Call Waiting, Call Waiting Notify
- Call Park, Call Pickup Remote
- Hunt Group
- MS-Window based User Agent

3-Party Call Conference

- H/W MCU based on programmable DSP
- Various Voice Codec Support
- Up to 8 subscriber, 2 session at 4-Party Conference

IVR Service

- IVR Scenario Editor Support
- IVR Scenario Simulation
- IVR Scenario Run-Time Debugging

Additional Application Service

- IP Voice Broadcasting Service
- Media Gateway Service

Network Protocol & Service

- Data, Voice, Video and Security Support
- Standard Compliant IP Network Protocol

WAN Protocol

- Broadband IP Network Support
- PPPoE, HDLC etc
- Standard Compliant WAN Network Protocol

Network Management

- Standard SNMP Agent ((MIB v2) Support
- Console, Telnet, Web Based Management
- Remote Download via FTP/TFTP

Traffic QoS Control

- Traffic QoS Control Feature for Services
- Voice, Data, Video Prioritizing Control
- Various QoS Algorithm Support

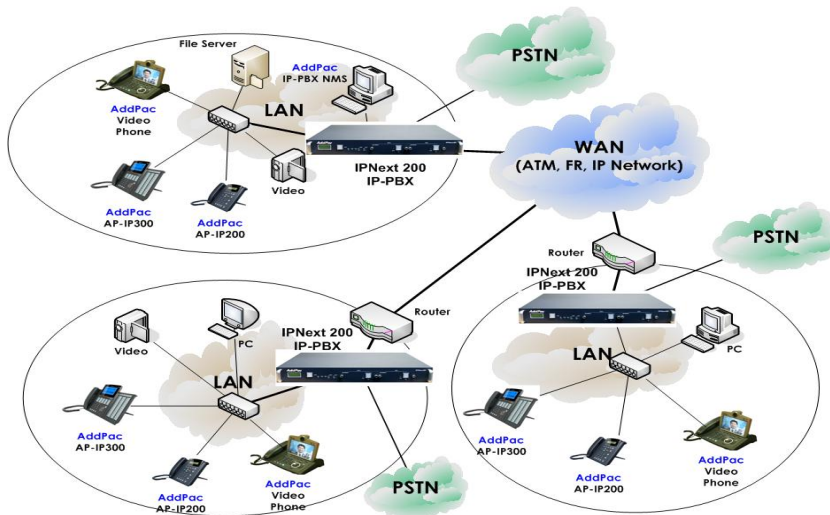
Security Feature

- IP Packet Filtering / Access List
- Access Control and Data Protections
- Enable/Disable for Specific Protocols
- Multi-level User Account Management
- Auto-disconnect for Telnet/Console Sessions
- PPP User Authentication Support
- Password Authentication Protocol (PAP)
- Challenge Handshake Authentication Protocol (CHAP)

Other Feature

- DHCP Server & Relay Functions

IPNext200 Network Diagram



Ordering Information

- IPNext200 IP-PBX
 - Two(2) Fast Ethernet Port
 - One(1) Console Port
 - RISC CPU,
 - 16MB Flash, 128 MB SDRAM
 - Two(2) 2.5 Inch HDD Module (40Giga)
 - APOS v8.xx Manual
 - CAB-LAN Ethernet Cable
 - CAB-CON RS-232C Console Cable
- Option :
- IPNext200-FXS4 4-Port FXS4 Module
 - IPNext200-FXO4 4-Port FXO4 Module
 - IPNext200-E&M4 4-Port E&M Module
 - IPNext200-FXS2/FXO2 4-Port FXS2/FXO2
 - IPNext200-MCU Voice H/W MCU Module