



## IPNext 500 IP-PBX

With the growth of business customers' needs for IP telephony and broadband converged network applications, the trends towards 'All IP' communication environment are becoming a reality keeping pace with the technological advance of next generation networking. IPNext 500 IP-PBX delivers a new IP communication solution for 'All IP' environment as a core system of AddPac's comprehensive IP solution which features various end user terminal equipments such as AP-VP300 IP video phone and AP-IP300, AP-IP200 IP phone etc.

The IPNext 500 centralized total solution brings not only conventional PBX features but also an extended functionality of collaborative IP communication delivering multimedia video/audio service solution enhanced by the broadcasting operation feature. Designed on the foundation of high performance embedded RISC CPU, IPNext 500 supports various VoIP modules and video modules and adopts the dual HDD fail safe system(RAID1 configuration). It's ideal IP-PBX system for small and medium businesses taking a full advantage of new 'all-in-one' concept with voice call handling, data networking, video/audio broadcasting integrated.

AddPac IPNext 500 IP-PBX comes with two(2) 3.5 inch HDD module slot (RAID 1), two(2) 10/100Mbps fast ethernet port and Console port at the front part of chassis. It also comes with two(2) VoIP interface module slot and one(1) PCI bus module slot for video or network modules at the rear part. It features a wide variety of **call scenarios** such as **Basic Call, Coloring Service, Music on Hold, Blind Transfer, Call Pickup, Group Call Pickup, Consult Call, Switching Call, Consult Transfer, Call Waiting, Call Waiting Notify, Call Park, Call Pickup Remote, Hunt Group**, supporting SIP, H.323 concurrently. In addition, 3.5 inch Dual IDE high capacity HDD for RAID 1 configuration is well-suited to the services which need sizable memory capacity such as Voice Mail ensuring the system consistency and the high availability



AP-VP300



AP-IP300



AP-IP200

## Product Highlights

- New 'All-In-One' IP-PBX Concept with Video, Voice, Audio, Data Integrated for Complete Multimedia IP Telephony System
- Hot-Swap IDE type dual 3.5 Inch HDD (RAID1 Configuration Available)
- Two(2) VoIP Interface Module Slot (4-Port FXS, FXO, E&M, etc)
- One(1) Multimedia Interface Slot for Video Card, Network Card such as V.35, ATM
- Upgradeable System Architecture based on Programmable RISC & DSP
- Two(2) 10/100Mbps Fast Ethernet Interface
- RS-232C Console Interface for CLI (Command Line Interface)
- Voice Mail Function Support via Embedded Large Capacity HDD
- SIP and H.323 Signalling
- Various IP Telephony Call Scenario (Coloring, Music on Hold, Call Transfer, etc)
- Powerful IVR function via IVR Scenario Editor
- Multi-Party Voice Conference via Internal Hardware type MCU Module (DSP, Two(2) session 3,4 party) (G.723.1, G.729, G.726, G.711,etc)
- Multimedia Application Service such as Video

## IPNext 500 Application

- IP Telephony System Integration
- IP Video/Audio Broadcasting Terminal
- IP Multimedia Application
- IP based Call Center System
- IP based Unattended Surveillance

## Hardware Specification

- RISC PowerPC Microprocessor (CPU)
- Memory
  - Boot memory 512Kbyte Flash Memory
  - Flash memory 16Mbyte Flash Memory
  - Main Memory 128Mbyte SDRAM
  - HDD(RAID1) 3.5 Inch IDE HDD x 2  
Hot-Swap Module Type
- Ethernet Interface
  - 10/100Mbps 2-Port Ethernet (RJ-45)
- Console Port
  - RS-232C 1-Port Console (RJ-45)
- System Status Display LCD
  - Orange LCD Panel
- Two(2) VoIP module slot , One(1) multimedia module slot
- Analog VoIP Interface
  - 4-Port FXS, FXO, E&M Module
  - 2-Port FXS/2-Port FXO Module
  - Various Broadcasting Module
- Digital E1/T1 VoIP Interface

## Power & Operational environment

- Power Internal Free Voltage Power
- Power Consumption 5V/10A, 12V/4A
- Operation Temperature 0°C ~ +45°C
- Storage Temperature -40°C ~ +85°C
- Humidity 5%~95%

## Dimensions

- Dimension (W x D x H) : 440x480x77(mm)
- Weight : 9.24 Kg

## Voice over IP Service

- H.323, SIP VoIP Signaling Protocol
- VAD, DTMF, CNG, G.168
- Voice Codec : G.723.1, G.729, G.726, G.711,
- Various VoIP Features
- Interoperable with Diverse VoIP Gateways
- Interoperable with Diverse VoIP Gatekeeper, SIP Proxy

## IP Telephony Service

- Speed Dial, Phone Book
- Voice Mail
- Basic Call Scenario, Coloring Service Music on Hold, Blind Transfer, Call Pickup
- Consult Call, Switching Call, Consult Transfer
- Call Waiting, Call Waiting Notify
- Call Park, Call Pickup Remote
- Hunt Group
- MS-Window based User Agent

## 3-Party Call Conference

- Voice H/W MCU based on programmable DSP
- Various Voice Codec Support
- Up to 8 subscriber, 2 session at 4-Party Conference

## IVR Service

- IVR Scenario Editor Support
- IVR Scenario Simulation
- IVR Scenario Run-Time Debugging

## Additional Application Service

- IP Voice Broadcasting Service
- IP Video Broadcasting Service
- Media Gateway Service
- V.35 ATM Router

## Network Protocol & Service

- Data, Voice, Video and Security Support
- Standard Compliant IP Network Protocol

## WAN Protocol

- Broadband IP Network Support
- PPPoE, HDLC etc
- Standard Compliant WAN Network Protocol

## Network Management

- Standard SNMP Agent ((MIB v2) Support
- Console, Telnet, Web Based Management
- Remote Download via FTP/TFTP

## Traffic QoS Control

- Traffic QoS Control Feature for Services
- Voice, Data, Video Prioritizing Control
- Various QoS Algorithm Support

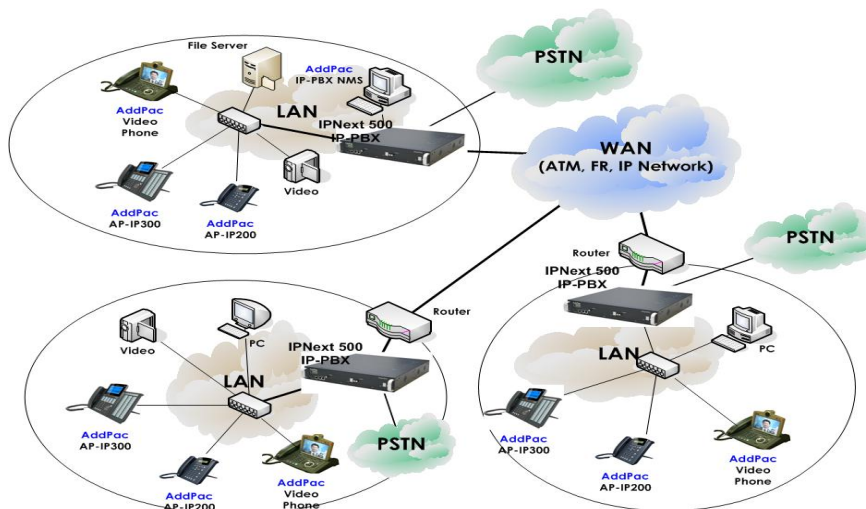
## Security Feature

- IP Packet Filtering / Access List
- Access Control and Data Protections
- Enable/Disable for Specific Protocols
- Multi-level User Account Management
- Auto-disconnect for Telnet/Console Sessions
- PPP User Authentication Support
- Password Authentication Protocol (PAP)
- Challenge Handshake Authentication Protocol (CHAP)

## Other Feature

- DHCP Server & Relay Functions

## IPNext500 Network Diagram



## Ordering Information

- IPNext 500 IP-PBX
    - Two(2) Fast Ethernet Port
    - One(1) Console Port
    - RISC CPU,
    - 16MB Flash, 128 MB SDRAM
    - Two(2) HDD Module (RAID1)
    - Voice H/W MCU Module
    - APOS v8.xx Manual
  - CAB-LAN Ethernet Cable
  - CAB-CON RS-232C Console Cable
- Option :
- IPNext500-FXS4 4-Port FXS4 Module
  - IPNext500-FXO4, E&M4, FXS2/FXO2 Module
  - IPNext500-E1,T1 1-Port E1, T1 Module
  - IPNext500-AV1000 1-Port AV Module