



## IPNext 1000 Next Generation IP-PBX

With the growth of business customers' needs for IP telephony and broadband converged network applications, the trends towards 'All IP' communication environment are becoming a reality keeping pace with the technological advance of next generation networking. IPNext 1000 IP-PBX delivers a new IP communication solution for 'All IP' environment as a core system of AddPac's comprehensive IP solution which features various end user terminal equipments such as AP-VP300 IP video phone and AP-IP300, AP-IP200 IP phone etc.

The IPNext 1000 centralized total solution brings not only conventional PBX features but also an extended functionality of collaborative IP communication delivering multimedia video/audio service solution enhanced by the broadcasting operation feature. Designed on the foundation of high performance embedded RISC CPU, IPNext 1000 supports various VoIP modules and adopts the dual HDD fail safe system(RAID1 configuration). It's ideal IP-PBX system for medium and large enterprise taking a full advantage of new 'all-in-one' concept with voice call handling, data networking, video/audio broadcasting integrated.

AddPac IPNext 1000 IP-PBX comes with two(2) 3.5 inch HDD module slot (RAID 1), two(2) 10/100/1000Mbps Gigabit ethernet port and Console port at the front part of chassis. It also comes with four(4) VoIP interface module slot for 8-port FXS, FXO, E&M and digital E1/T1 at the rear part. It features a wide variety of call scenarios such as **Basic Call, Coloring Service, Music on Hold, Blind Transfer, Call Pickup, Group Call Pickup, Consult Call, Switching Call, Consult Transfer, Call Waiting, Call Waiting Notify, Call Park, Call Pickup Remote, Hunt Group**, supporting SIP, H.323 concurrently. In addition, 3.5 inch Dual IDE high capacity HDD for RAID 1 configuration is well-suited to the services which need sizable memory capacity such as Voice Mail ensuring the system consistency and the high availability

## Product Highlights

- New 'All-In-One' IP-PBX Concept with Voice, Audio, Data Integrated for Complete IP Telephony System
- Hot-Swap IDE type dual 3.5 Inch HDD (RAID1 Configuration Available)
- Four (4) VoIP Interface Module Slot (8-Port FXS, FXO, E&M, and Digital E1/T1)
- Upgradeable System Architecture based on Programmable RISC & DSP
- Two(2) 10/100/1000Mbps Gigabit Ethernet Interface
- RS-232C Console Interface for CLI (Command Line Interface)
- Voice Mail Function Support
- SIP and H.323 Signaling for External Outbound Call
- Various IP Telephony Call Scenario (Coloring, Music on Hold, Call Transfer, etc)
- Powerful IVR function via IVR Scenario Editor
- Multi-Party Voice Conference via Internal Hardware type MCU Module (DSP, Two(2) session 3,4 party) (G.723.1, G.729, G.726, G.711,etc)
- Remote Firmware Upgrade Through FTP & TFTP Protocol
- MS-Window based Smart Multimedia Manager Software
- Essential Scalability Features such as DHCP Server & Relay, NAT/PAT, IEEE Transparent Bridging, and Debugging/Diagnostics, etc.
- Fault Tolerant and Scalability Architecture for duplication



AP-VP300



AP-IP300



AP-IP150

## IPNext1000 Application

- IP Telephony System Integration
- IP Multimedia Telephony Solution
- IP Audio Broadcasting Terminal
- IP based Call Center

## Hardware Specification

- RISC PowerPC Microprocessor (CPU)
- Memory
  - Boot memory 512Kbyte Flash Memory
  - Flash memory 16Mbyte Flash Memory
  - Main Memory 256Mbyte SDRAM
  - HDD(RAID1) 3.5 Inch IDE HDD x 2  
Hot-Swap Module Type
- Ethernet Interface
  - 10/100/1000Mbps 2-Port Gigabit Ethernet (RJ-45)
- Console Port
  - RS-232C 1-Port Console (RJ-45)
- System Status Display LCD
  - Orange LCD Panel
- Four(4) VoIP Interface Module Slot
  - 8-Port FXS, FXO, E&M Module
  - 4-Port FXS/4-Port FXO Module
  - Various Broadcasting Module
  - 1, 2-Port Digital E1/T1 Interface

## Power & Operational environment

- Power Internal Free Voltage Power
- Power Consumption 5V/30A, 12V/4A
- Operation Temperature 0°C ~ +45°C
- Storage Temperature -40°C ~ +85°C
- Humidity 5%~95%

## Dimensions

- Dimension (W x D x H) : 485 x 520 x 130 (mm)
- Weight : 15.06 Kg

## Voice over IP Service

- H.323, SIP VoIP Signaling Protocol
- VAD, DTMF, CNG, G.168
- Voice Codec : G.723.1, G.729, G.726, G.711,
- Various VoIP Features
- Interoperable with Diverse VoIP Gateways
- Interoperable with Diverse VoIP Gatekeeper, SIP Proxy

## IP Telephony Service & Call Routing

- Speed Dial, Phone Book
- Voice Mail
- Basic Call Scenario, Coloring Service Music on Hold, Blind Transfer, Call Pickup
- Consult Call, Switching Call, Consult Transfer
- Call Waiting, Call Waiting Notify
- Call Park, Call Pickup Remote
- Hunt Group
- Smart Multimedia Manager Program for System Management
- Smart Messenger Program for IP terminals

## IP-PBX Signaling

- SIP Application Server, Proxy, Registrar and Location Server (RFC3261)
- Multiple ITSP Truck with SIP & H.323 Account Support
  - IP UA Client Role for Registering to ITSP SIP Server
  - H.323 Gatekeeper Client Role for Registering to ITSP H.323 Gatekeeper Server

## 3-Party Call Conference

- Voice H/W MCU based on programmable DSP
- Up to 8 subscriber, 2 session at 4-Party Conference

## IVR Service

- IVR Scenario Editor Support
- IVR Scenario Simulation
- IVR Scenario Run-Time Debugging

## RTP Proxy Service

- Private IP Address Support
- IPv6 Address Support
- Public and Private IP Address Inter-working

## Network Management

- Standard SNMP Agent ((MIB v2) Support
- Console, Telnet, Web Based Management
- Remote Download via FTP/TFTP

## Traffic QoS Control

- Traffic QoS Control Feature for Services
- Voice, Data, Video Prioritizing Control
- Various QoS Algorithm Support

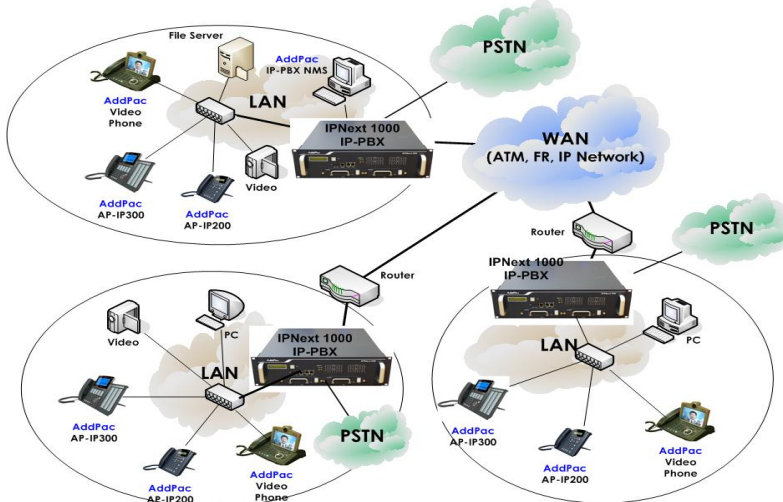
## Security Feature

- IP Packet Filtering / Access List
- Access Control and Data Protections
- Enable/Disable for Specific Protocols
- Multi-level User Account Management
- Auto-disconnect for Telnet/Console Sessions
- PPP User Authentication Support
  - Password Authentication Protocol (PAP)
  - Challenge Handshake Authentication Protocol (CHAP)

## Other Feature

- DHCP Server & Relay Functions

## IPNext 1000 Network Diagram



## Ordering Information

- IPNext1000 IP-PBX
  - Two(2) Giga Ethernet Port
  - One(1) Console Port
  - RISC CPU,
  - 16MB Flash, 256 MB SDRAM
  - Two(2) HDD Module (RAID1)
  - Voice H/W MCU Module
  - APOS v8.xx Manual
- CAB-LAN Ethernet Cable
- CAB-CON RS-232C Console Cable
- Option Modules
  - IPNext1000-FXS8 8-Port FXS Module
  - IPNext1000-FXO8,E&M8,FXS4/FXO4 Module
  - IPNext1000-E1,T1 1-Port E1, T1 Module