

IPNext 1000™

NGN IP-PBX

High-performance Next Generation IP-PBX Solution



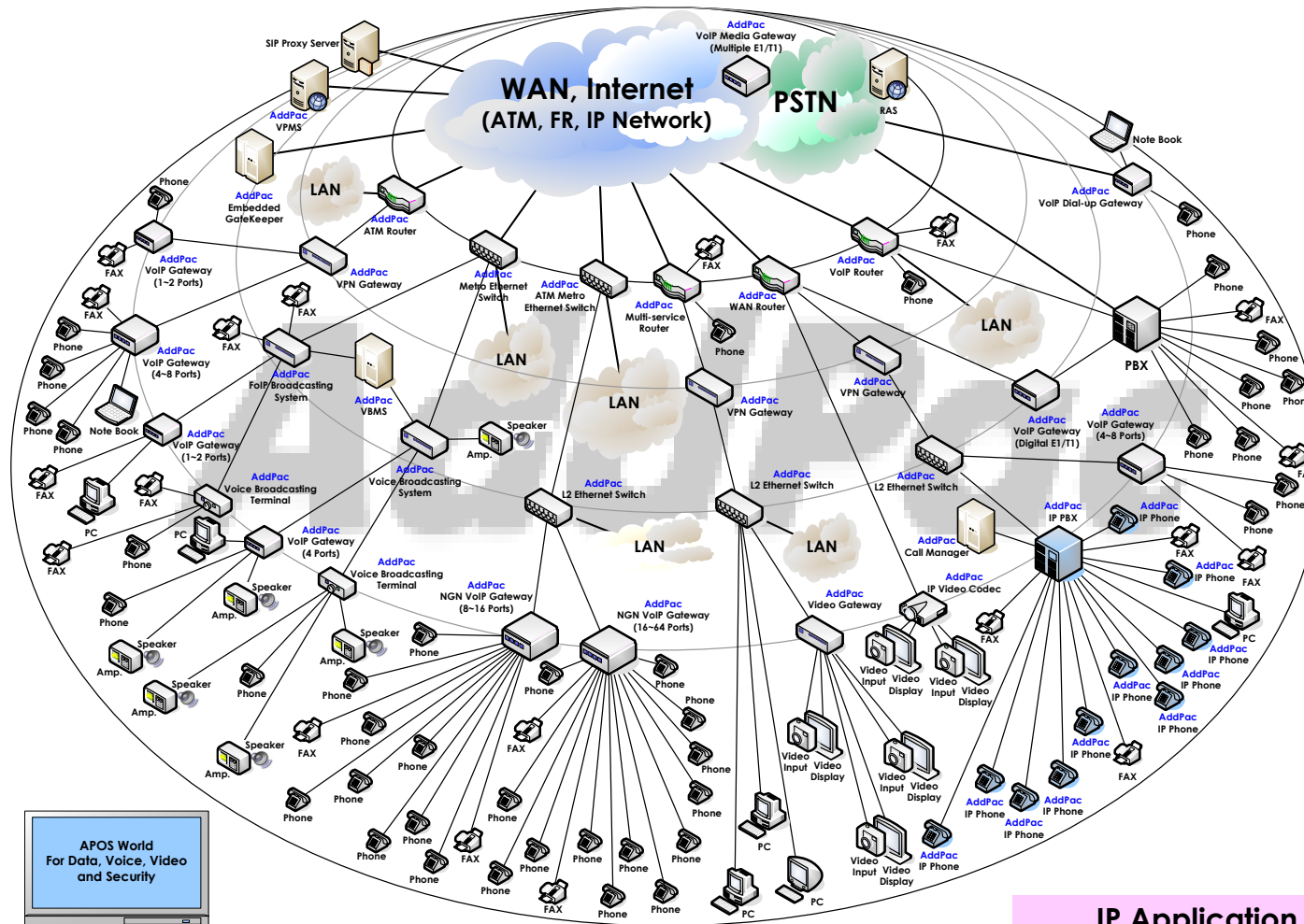
AddPac

AddPac Technology

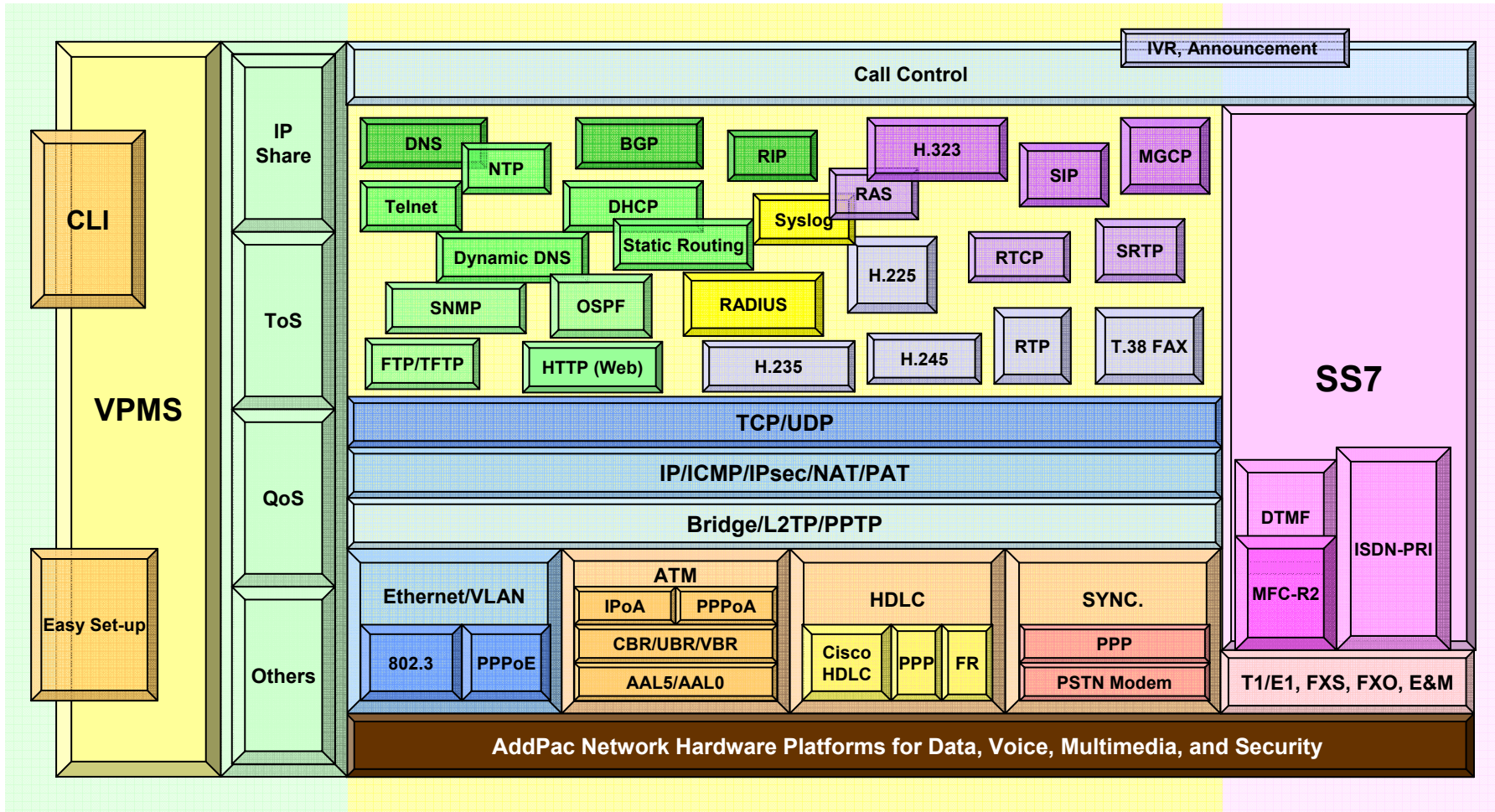
2005, Sales and Marketing

www.addpac.com

V²oIP Internetworking Solution



APOS Internetworking Protocol



IPNext 1000 NGN IP-PBX

- Product Overview
- Product Road Map
- Hardware Specification
- Multimedia Service
- Software Service
- Video Service & Features
- Audio & Voice Service and Features
- Network Service and Features
- User Terminals
- Application Area
- Ordering Information

Product Overview

IPNext 1000 Next Generation IP-PBX

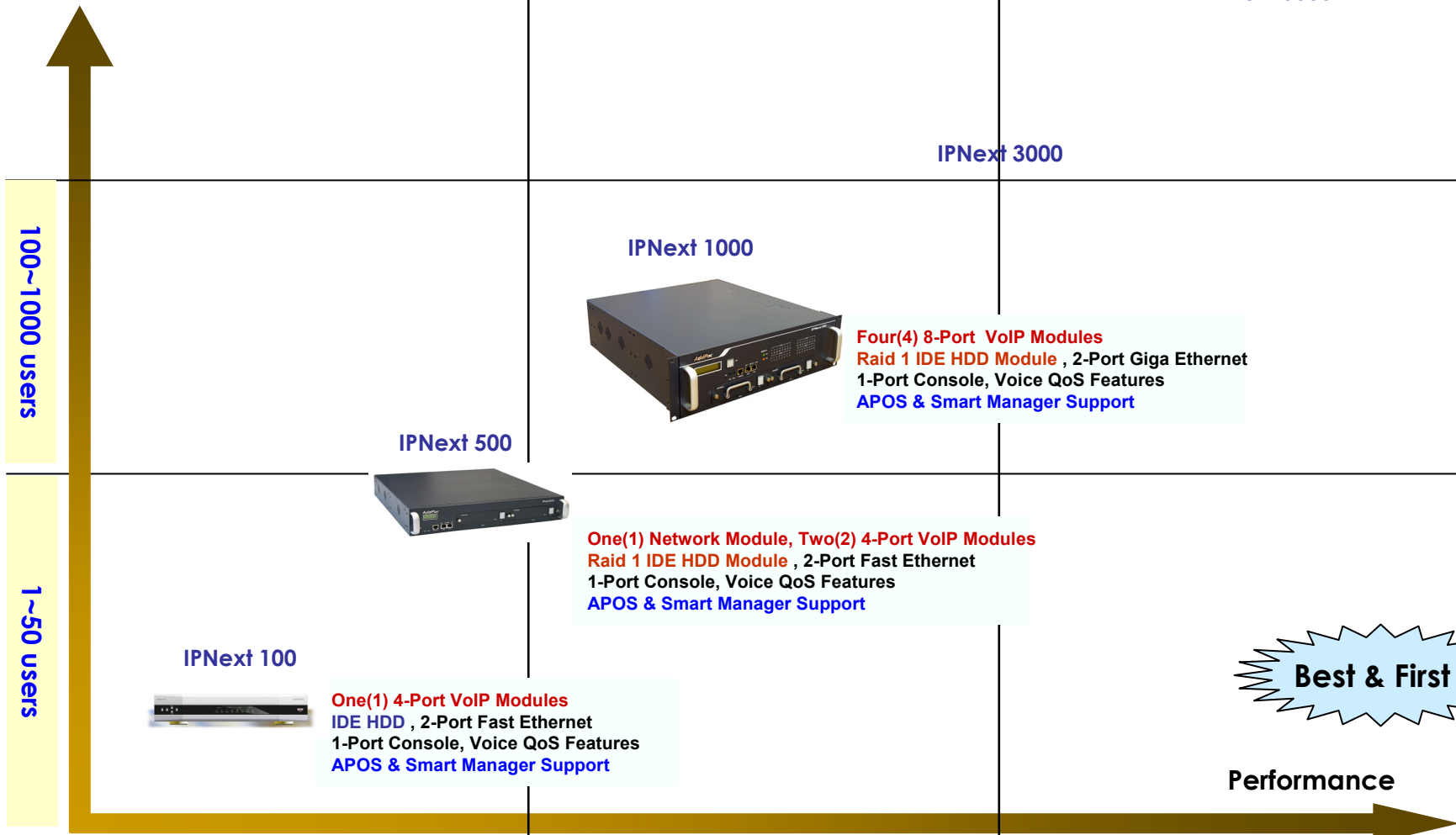
- IP based Advanced PBX Solution
- Powerful Management and User Friendly Features
- Fault Tolerant and Scalability Architecture
- High-performance Video, Audio, and Voice Service
- Firmware Upgradeable Architecture
- Voice/Audio Privacy Protection
 - Secure RTP, VPN Function
- How-Swap **RAID 1** Hard Disk Backup
- **Power Duplication**



Product Overview

IPNext 1000 Next Generation IP-PBX

Number of Concurrent Users

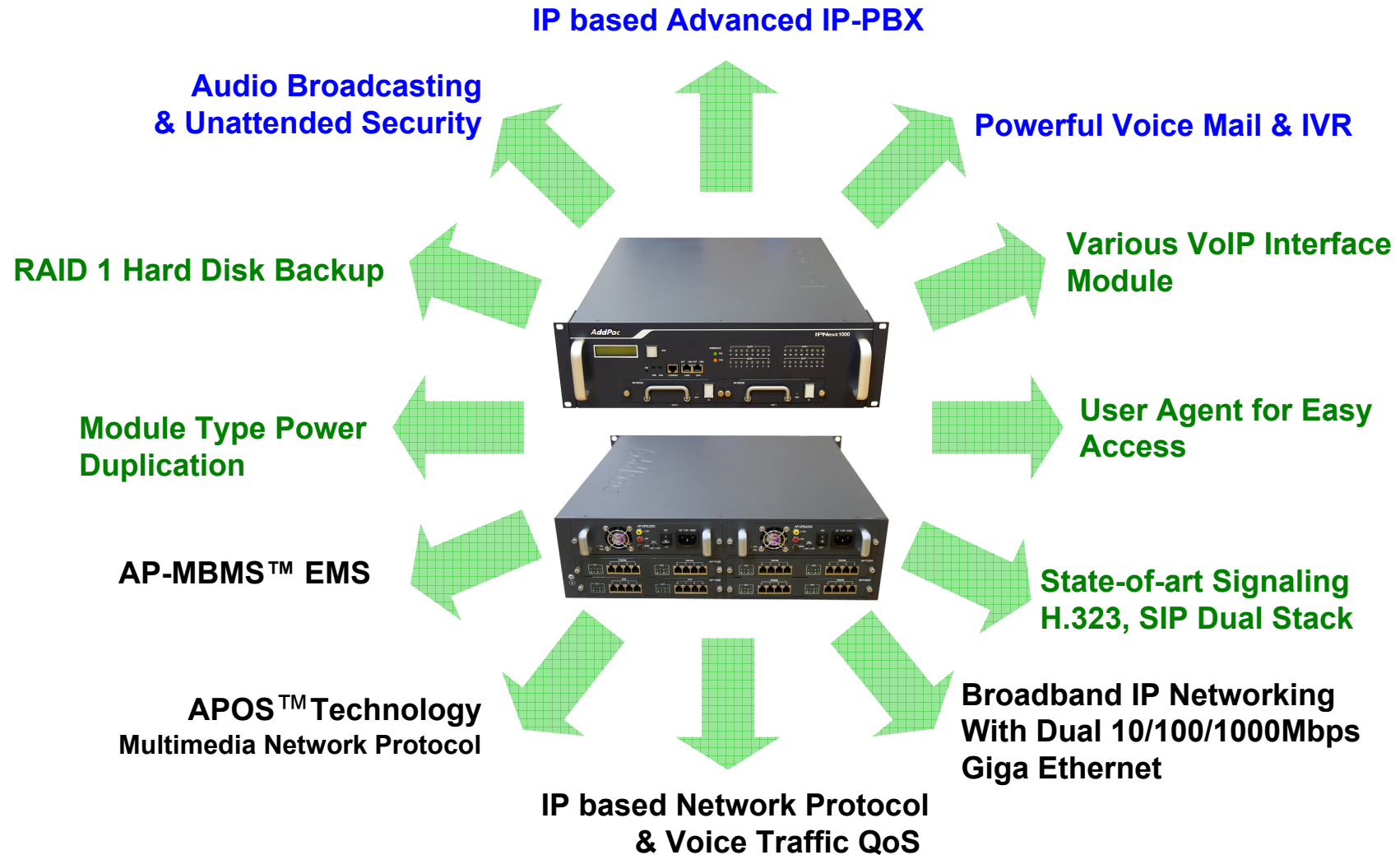


Best & First !

Performance

Product Highlights

IPNext 1000 Next Generation IP-PBX



Hardware Specification

IPNext 1000 Next Generation IP-PBX



- **64bit RISC Microprocessor Computing Power**
- **Main Chassis**
 - **Fixed Network Interface**
 - Two(2) 10/100/1000Mbps **Giga Ethernet**
 - One(1) RS-232C Console (RJ45)
 - **Status Indication LCD**
 - **Two(2) Hard Disk Interface Slot for RAID1 Configuration**
 - **Four(4) VoIP Module Slots for FXS, FXO,E&M, Digital E1/T1, Audio broadcasting, etc**
 - **VoIP Port Indication LED**
 - **Power Redundancy**







Hardware Specification

IPNext 1000 Next Generation IP-PBX

64bit
CPU

Audio
Codec

- **VoIP Interface Module**

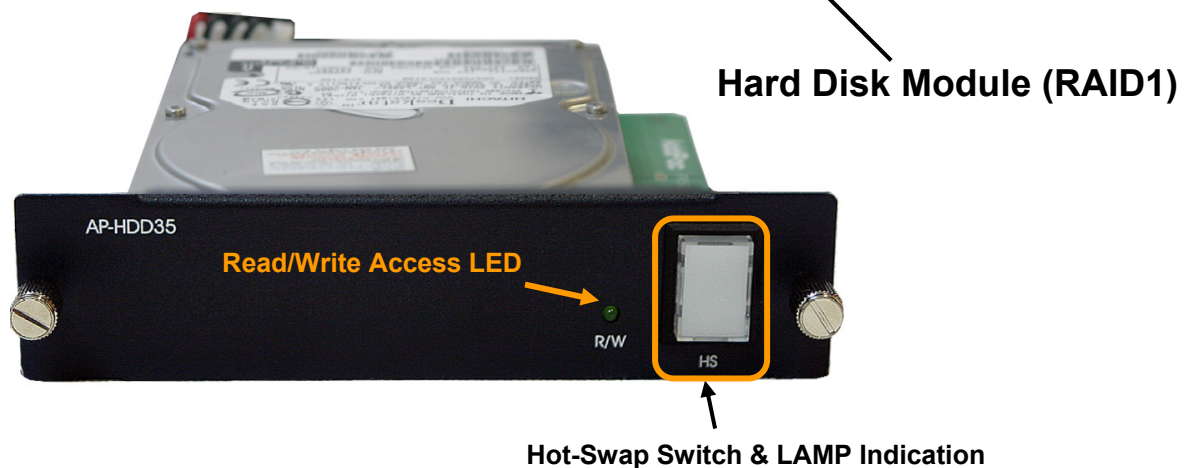
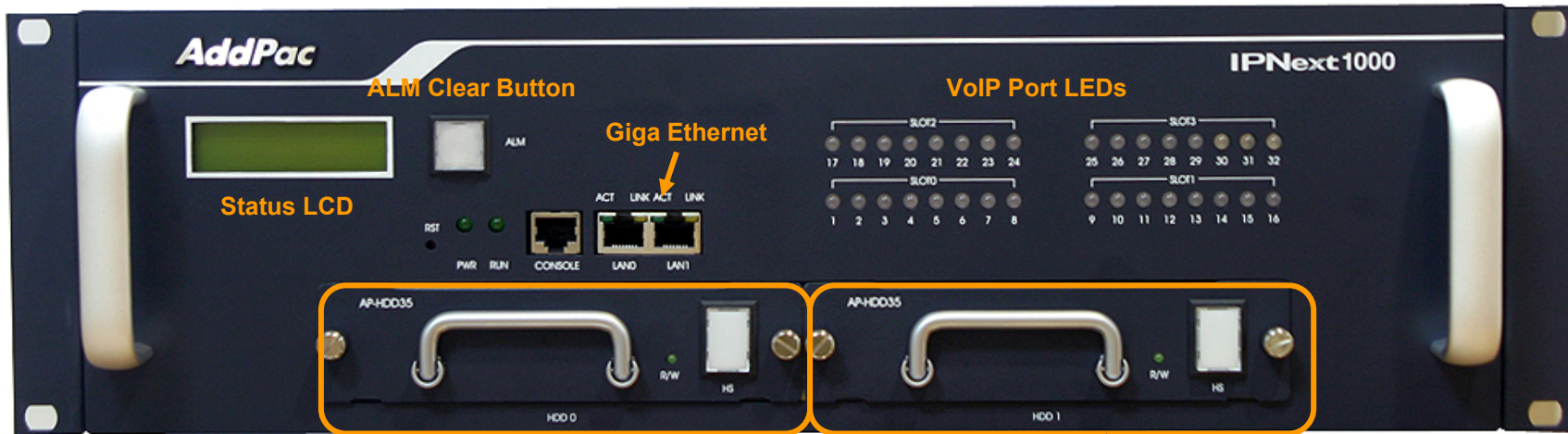
AP-FXS4		4-Port FXS Voice Processing Module (4 x RJ11)
AP-FXO4		4-Port FXO Voice Processing Module (4 x RJ11)
AP-E&M4		4-Port E&M Voice Processing Module (4 x RJ11)
AP-FXO2S2		2-Port FXO & 2-Port FXS Voice Processing Module (4 x RJ11)
APVI-1E1		1-Port PBX Digital E1 Module (1 x RJ45)
APVI-1T1		1-Port PBX Digital T1 Module (1 x RJ45)

Hardware Specification

IPNext 1000 Next Generation IP-PBX

64bit
CPU

IPNext 1000 Front Side

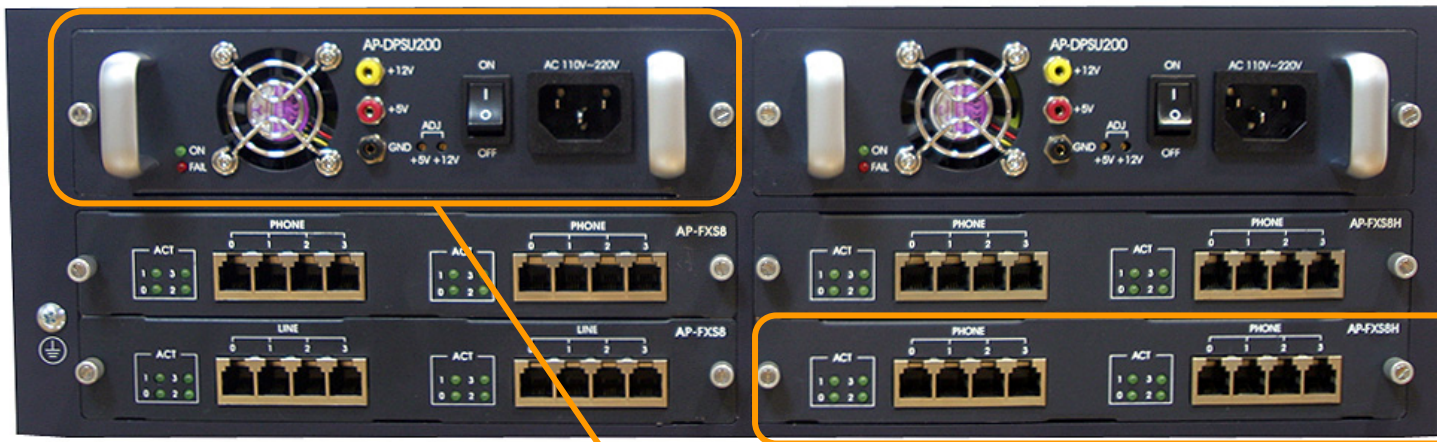


Hardware Specification

IPNext 1000 Next Generation IP-PBX

64bit
CPU

IPNext 1000 Back Side



VoIP Modules

VoIP Modules

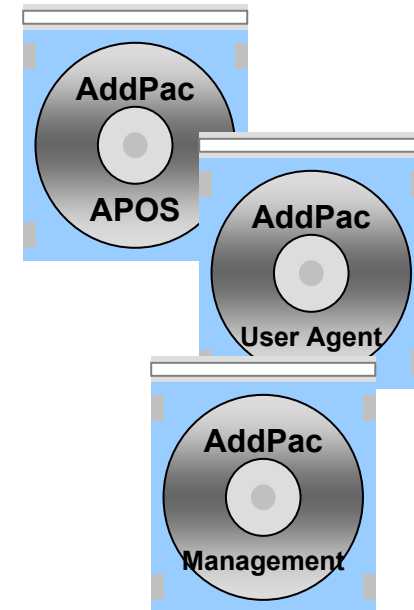


Power Supply Module

Software Service

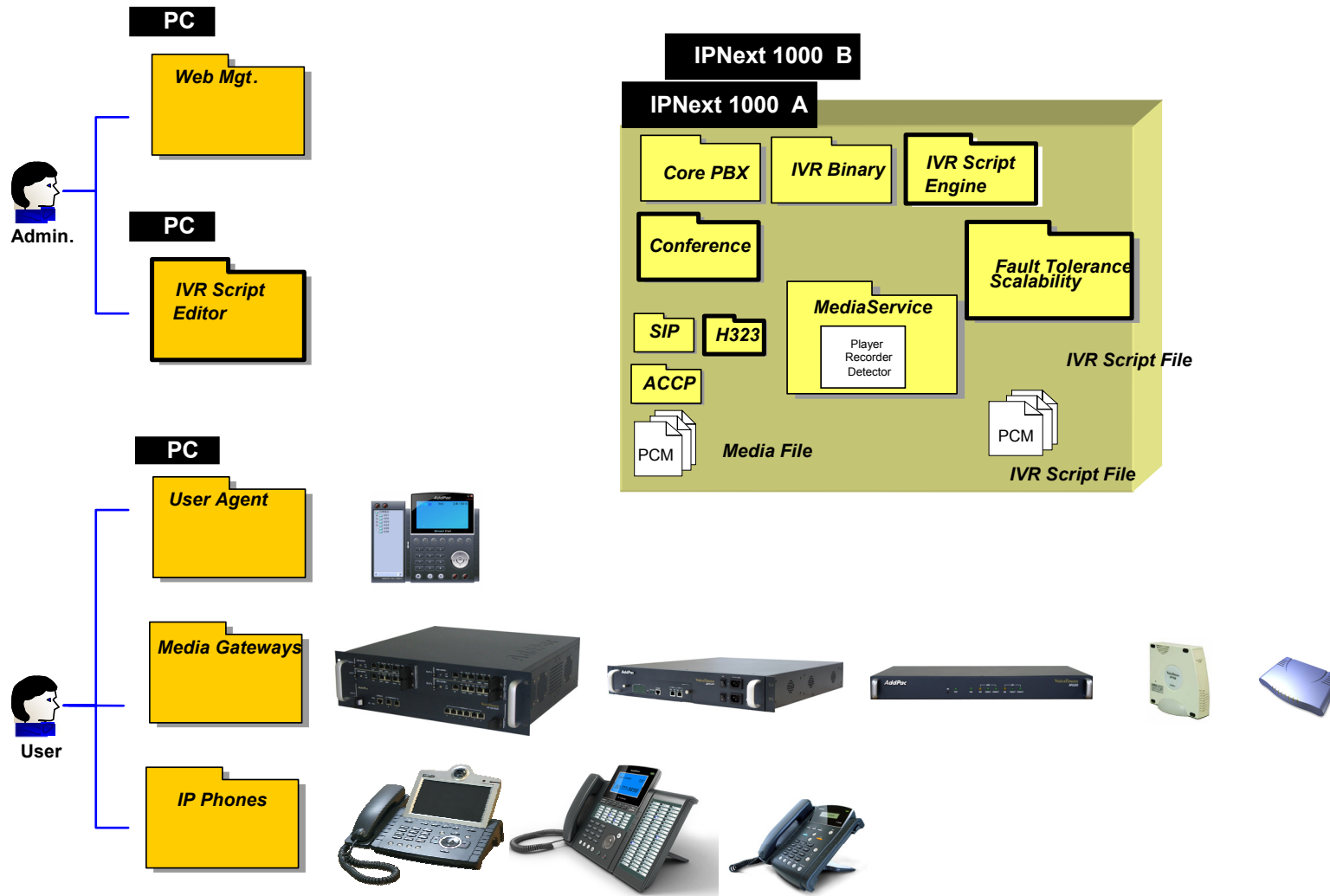
IPNext 1000 Next Generation IP-PBX

- **Built-in AddPac APOS Internetworking Software**
 - Scalability, Functionality, and Stability Features
 - Advanced IP-PBX Call Manager Features
 - Media Gateway Features
 - Network Interface Features
 - Video Traffic Features
 - QoS Control Features
- **Programmable Video, Audio, and Voice Services**
 - Video Codes, Audio, and Voice Codec
- **Firmware Upgradeable Architecture**
- **Industry Standard Network Protocol Features**
- **Highly User Friendly Management Features**
 - PC based User Agent
 - Smart Call Manager



IP-PBX Software Components

IPNext 1000 Next Generation IP-PBX



Telephony Service and Features

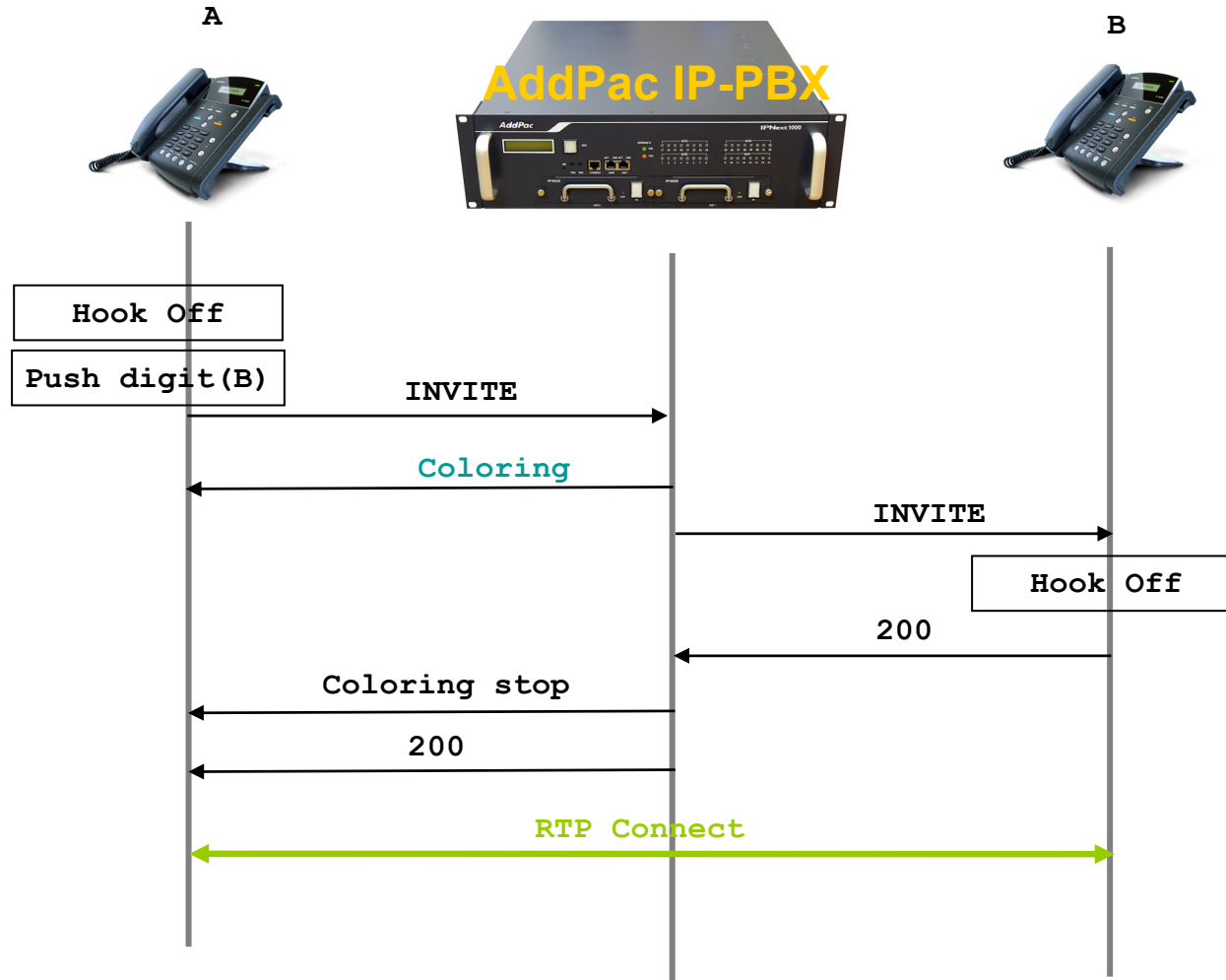
IPNext 1000 Next Generation IP-PBX

- **Basic Call**
- **Coloring Service**
- **Music On Hold**
- **Blind Transfer**
- **Call Pickup**
- **Group Call Pickup**
- **Consult Call**
- **Switching Call**
- **Consult Transfer**
- **Call Waiting**
- **Call Park**
- **Call Pickup Remote**
- **Hunt Group**



SIP based Basic Call Scenario

IPNext 1000 Next Generation IP-PBX



Audio & Voice Service and Features

IPNext 1000 Next Generation IP-PBX

- **Audio & Voice Networking Interface**
 - Audio Input/Output Port (2 x 3.5mm Stereo Female Connector)
- **VoIP based Signaling Protocol Support**
 - H.323, SIP Multiple Signaling Protocol Stack
 - H.323 Gateway, Gatekeeper Support
- **High-performance Audio & Voice Codec Support**
 - Line IN/OUT : G.726, G.711, MP-3 Audio Codec, etc
- **Enhanced QoS Management Features for Voice Traffics**

Network Service and Features

IPNext1000 Next Generation IP-PBX

- **Network Managements**
 - Standard SNMP Agent (MIB v2) Support
 - Remote Management using Console, Telnet
 - Web based Management using HTTP Server Interface
- **Security Functions**
 - Standard & Extended IP Access List
 - Enable/Disable for Specific Network Protocols
 - Multi-level User Account Management
 - Auto-disconnect for Telnet/Console Sessions
 - PPP User Authentication Supports (PAP & CHAP)
- **Operation & Managements**
 - System Performance Analysis for Process, CPU, Connection Interface
 - Debugging, System Auditing, and Diagnostics Support
 - System Booting and Auto-rebooting with Watchdog Feature
 - System Managements with Data Logging
 - IP Traffic Statistics with Accounting

Network Service and Features

IPNext1000 Next Generation IP-PBX

- **Network Managements**
 - DHCP Server & Relay Functions
 - Network Address Translation (NAT) Function
 - Port Address Translation (PAT) Function
 - Transparent Bridging (IEEE Standard) Function
 - Spanning Tree Bridging Protocol Support
 - Remote Bridging Support
 - Concurrent Routing and Bridging Support
 - Cisco Style Command Line Interface (CLI)
 - Network time Protocol (NTP) Support

User Terminals

IPNext 1000 Next Generation IP-PBX

- **AP-VP300 High Performance Video Phone**
- **AP-IP500 VoD Phone**
- **AP-IP350 Premium IP Phone**
- **AP-IP300 Premium IP Phone**
- **AP-IP200 IP Phone**
- **Future Plan : AP-WP100 WiFi IP Phone**
- **Future Plan : AP-SoundStation**
- **Window based User Agent**

User Terminal : AP-VP300 Video Phone

IPNext 1000 Next Generation IP-PBX

- **7 Inch LCD Display, Touch Screen, Remocon**
- **External Video Interface**
 - Composite (RCA) Video In/Out, S-Video Out
 - Audio (RCA) In/Out
- **High-performance Video Codec Support**
 - H.263, MPEG-4, JPEG, and H.264
- **Powerful Image Resolution Support**
 - QCIF(176x144), CIF(352x288), QVGA(320x240), and VGA(640x480)
- **Up to 30fps at 1Mbps with VGA-Resolution(MPEG-4)**
- **Video Conference Call Support (AddPac MCU Inter-working)**
- **SIP, H.323 Signaling Support**
- **Rate Control for Video Traffic QoS**
 - Ensuring Optimized Quality
 - Frame Rate with Limited Bandwidth
- **High-end Error Resilient Against Various Packet Error**



User Terminal : AP-IP500 VoD Phone

IPNext 1000 Next Generation IP-PBX

- **7 Inch LCD Display, Touch Screen, Remocon**
- **External Video Output Interface**
 - Composite (RCA) Video Out, S-Video Out
 - Audio (RCA) In/Out
- **High-performance Video Decoder Support**
 - H.263, MPEG-4, JPEG, and H.264
- **Powerful Image Resolution Support**
 - QCIF(176x144), CIF(352x288), QVGA(320x240), and VGA(640x480)
- **Up to 30fps at 1Mbps with VGA-Resolution(MPEG-4)**
- **SIP, H.323 Signaling Support**
- **Rate Control for Video Traffic QoS**
 - Ensuring Optimized Quality
 - Frame Rate with Limited Bandwidth
- **High-end Error Resilient Against Various Packet Error**



User Terminal : AP-IP350 Premium IP Phone

IPNext 1000 Next Generation IP-PBX

- **7 Inch Color LCD Display, Touch Screen, Remocon Menu Key**
- **High quality Head Set Interface**
- **Network Interface**
 - Two(2) 10/100Mbps Fast Ethernet
 - One(1) RS-232C Console
 - One(1) USB 1.1 Interface for External Memory, etc
- **SIP, H.323 Signaling Support**
- **Standalone IP Phone**
- **IP-PBX Terminal**
- **Audio/Voice Broadcasting Terminal**



User Terminal : AP-IP300 IP Phone

IPNext 1000 Next Generation IP-PBX

- **Large Blue LCD Display**
- **External I/O Interface**
 - Audio (RCA) In/Out, MIC, Headphone
 - Two(2) Fast Ethernet Interface, RS-232C Console(RJ45)
 - PSTN FXO Interface (optional)
- **Premium IP Phone Features**
- **PoE (Power over Ethernet) Support**
- **Various Voice Codec Support**
 - G.711, G.726,etc
- **SIP, H.323 Signaling Support**
- **QoS Traffic Control, IP Share**
- **IP Audio Broadcasting Support**



User Terminal : AP-IP200 IP Phone

IPNext 1000 Next Generation IP-PBX

- **LCD Display**
- **External I/O Interface**
 - Audio (RCA) In/Out, MIC, Headphone
 - Two(2) Fast Ethernet Interface, RS-232C Console(RJ45)
 - PSTN FXO Interface (optional)
- **PoE (Power over Ethernet) Support**
- **Various Voice Codec Support**
 - G.711, G.726,etc
- **SIP, H.323 Signaling Support**
- **Traffic Control, IP Share**
- **IP Audio Broadcasting Support**



User Agent (Window based)

IPNext 1000 Next Generation IP-PBX

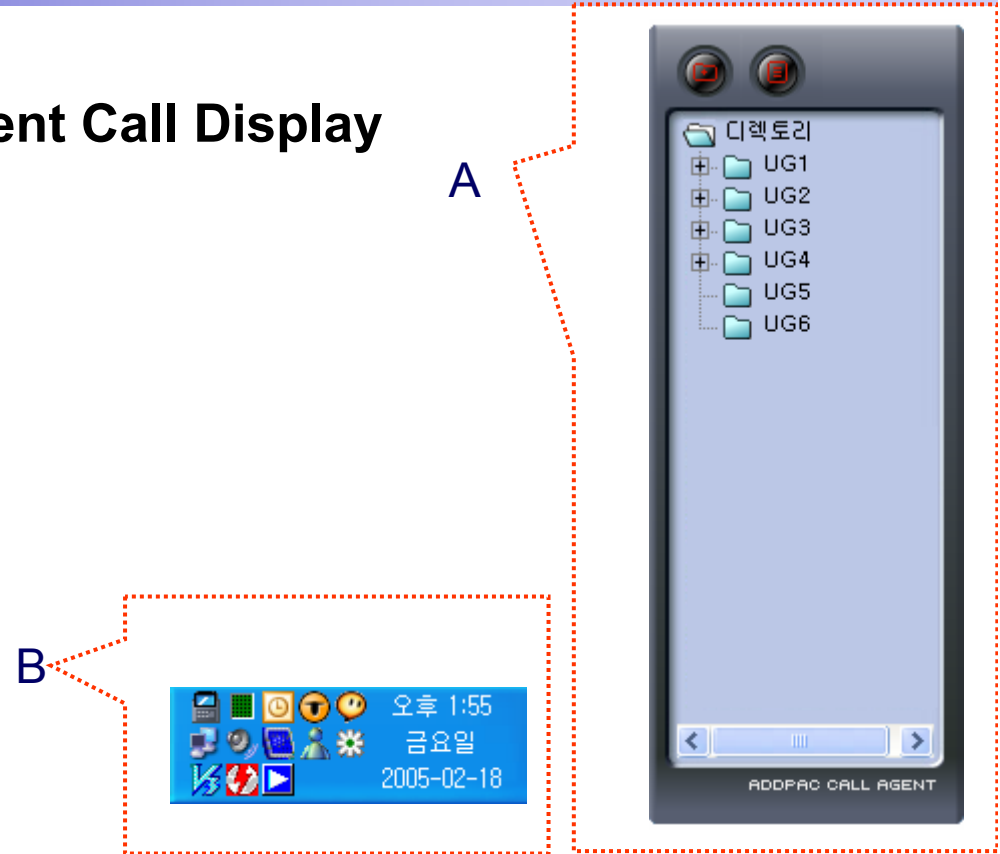
- IP Phone Emulation
- IP Phone Call Agent Role
- Region A :
 - Call Related Function (Call Pickup, Hold, Transfer, etc)
 - Environment Configuration
- Region B :
 - Provide Directory Info.
- Region C :
 - Inbound, Outbound Call Display
- Region D:
 - Telephone Feature Handling



User Agent (Window based)

IPNext 1000 Next Generation IP-PBX

- **Icon, System Tray Menu, Recent Call Display**
- **Region A :**
 - Recent Call Display
- **Region B :**
 - If program is executed, Icon is display in Tray Bar.



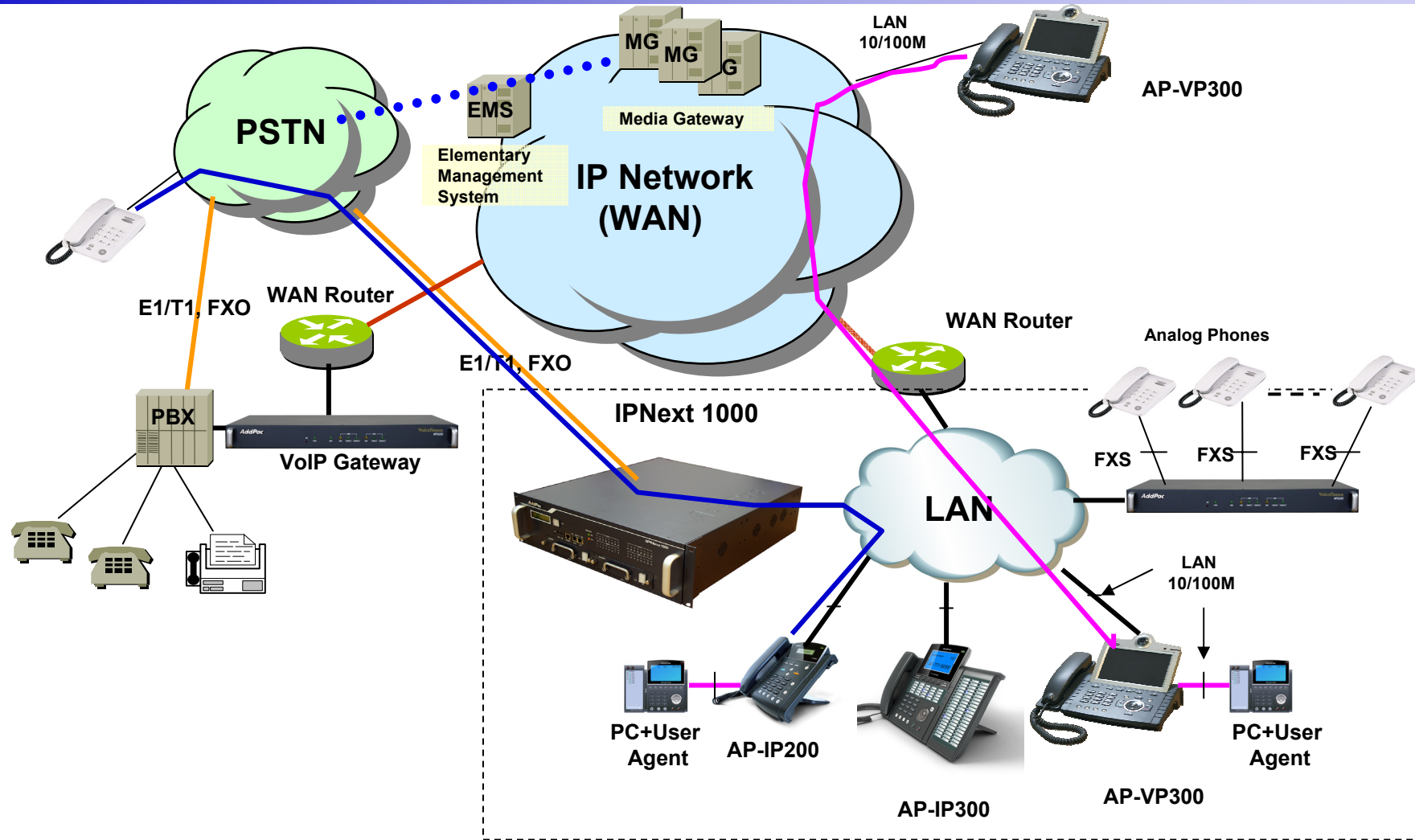
IPNext 1000 Next Generation IP-PBX

Application Area

- **Standard IP-PBX Application**
- **IP-PBX + IP Audio Broadcasting Application**
- **IP-PBX + QoS, IPS* Router Application**

Standard IP-PBX Application

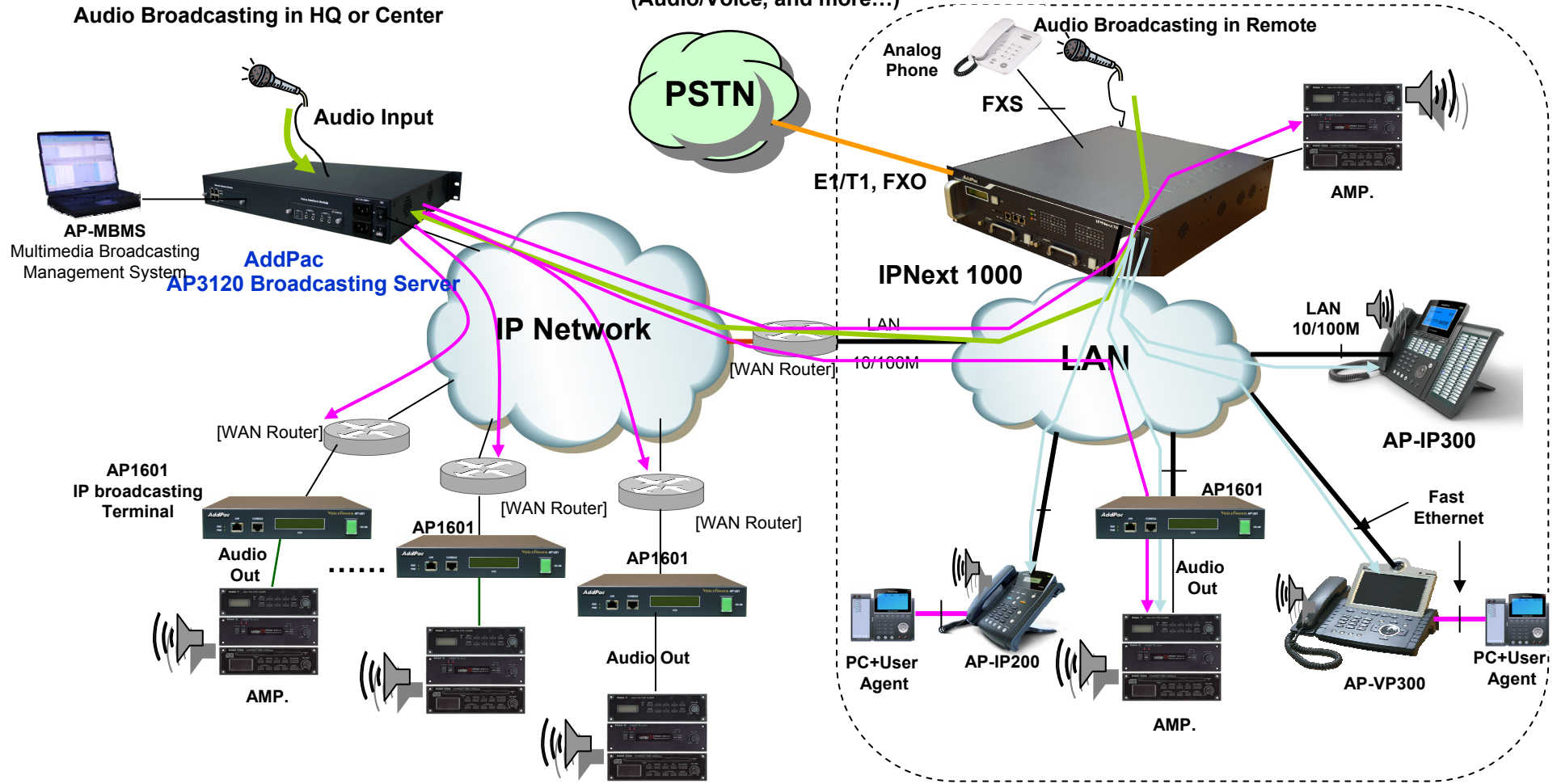
IPNext 1000 Next Generation IP-PBX



IP-PBX + IP Audio Broadcasting App.

IPNext 1000 Next Generation IP-PBX

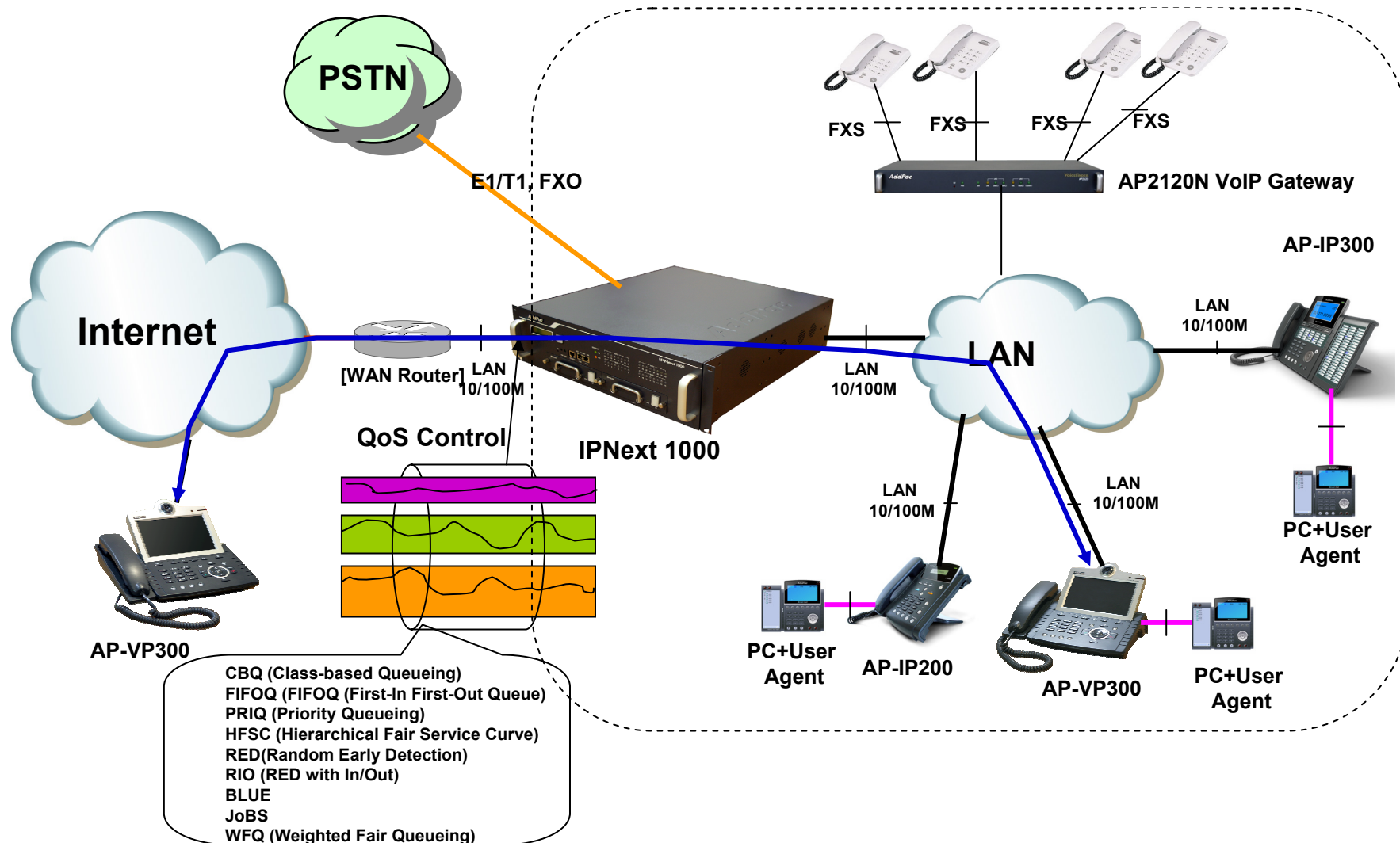
Remote Site Audio Broadcasting Service (Audio/Voice, and more...)



IP Audio Broadcasting in Remote Site

IP-PBX + QoS, IPS* Application

IPNext 1000 Next Generation IP-PBX



Ordering Information

- **IPNext 1000 Next Generation IP-PBX Hardware**
 - IPNext 1000 IP-PBX Main Body
 - High-performance 64bit RISC CPU
 - 2-ports 10/100/1000Mbps Giga Ethernet and 1-port RS-232C Console
 - Including Network Cable Set & Ext. Power Supply, etc.
 - RAID 1 Hard Disk (2x 3.5 Inch IDE 300Giga, Extendable)
 - Dual Power Supply
 - Optional VoIP Modules
- **Built-in APOS Internetworking Software for IPNext 1000**
- **Including 1 Year Hardware Warranty**
- **Product Documents**
 - Install and Operation Guide (PDF)
- **Pricing**
 - AddPac Technology Regional Sales Manager
 - Authorized Sales and Marketing Representatives
 - Please Contact www.addpac.com

IPNext1000 Next Generation IP-PBX

Thank you!

AddPac Technology Co., Ltd.
Sales and Marketing

Phone +82.2.568.3848 (KOREA)

FAX +82.2.568.3847 (KOREA)

E-mail sales@addpac.com