



AP5850™

Multiservice Router

High Performance Multiservice Router Solution



AddPac

AddPac Technology

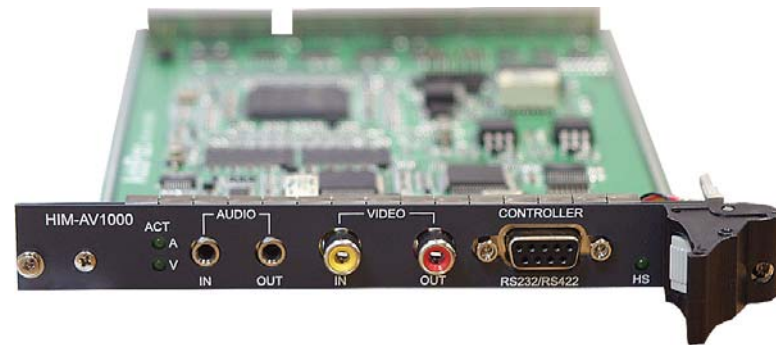
2005, Sales and Marketing

www.addpac.com

Contents

AP5850 Multiservice Router

- Product Overview
- Hardware Specification
- ATM Service Features
- WAN Service Features
- Video Service Features
- Network Service and Features
- Application Area
- Ordering Information



Product Overview

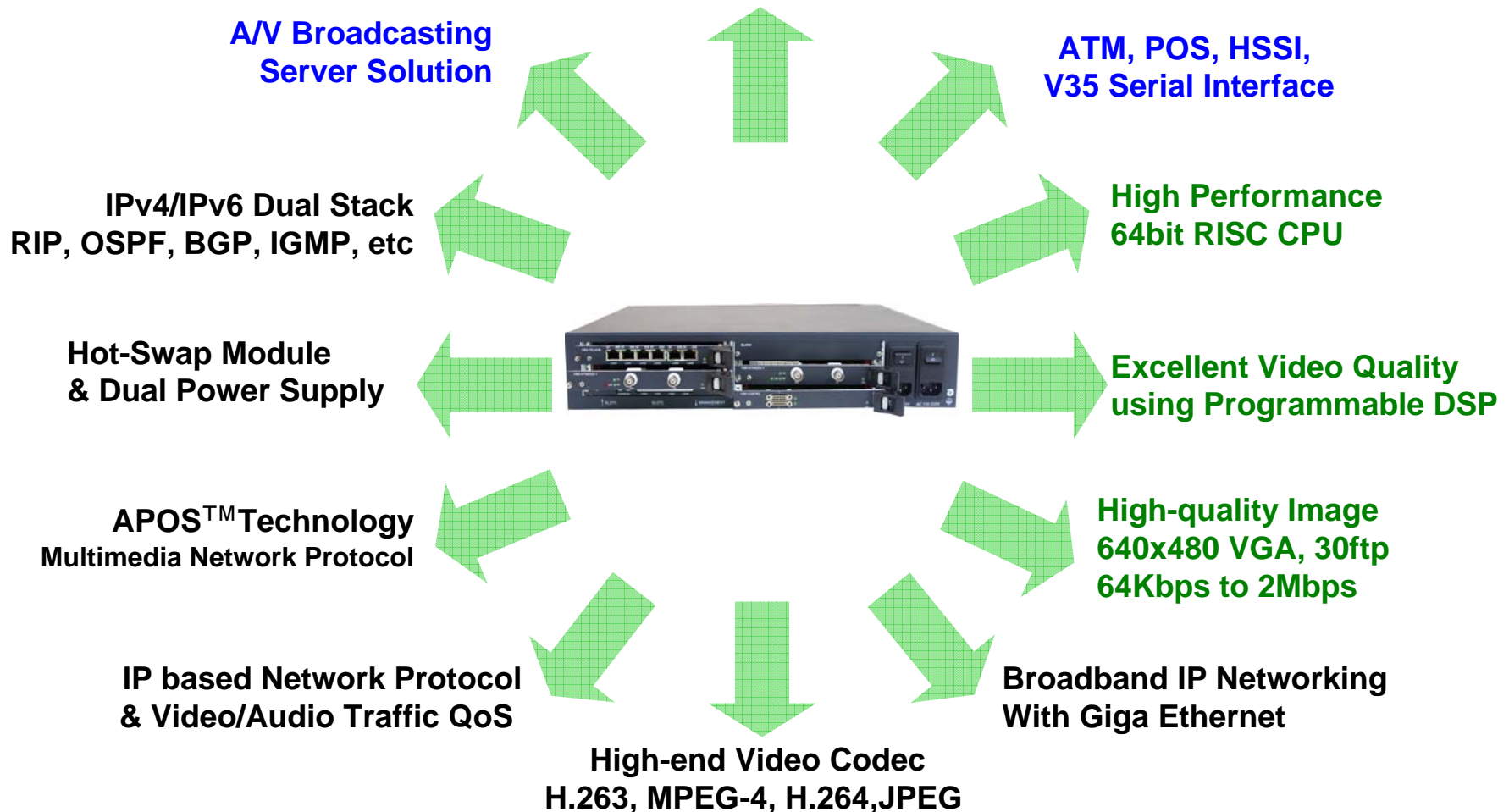
AP5850 Multiservice Router

- High Performance Multiservice Router Solution
- Support ATM, POS, LAN, Serial Interface
- Compact PCI Style Hot-Swap Module
- Scalability and Flexibility
- High-performance Video, Audio, and Data Service
- Firmware Upgradeable Architecture
- Dual Power Supply for Redundancy
- Video Solution with Outstanding Network Service Capability

Product Highlights

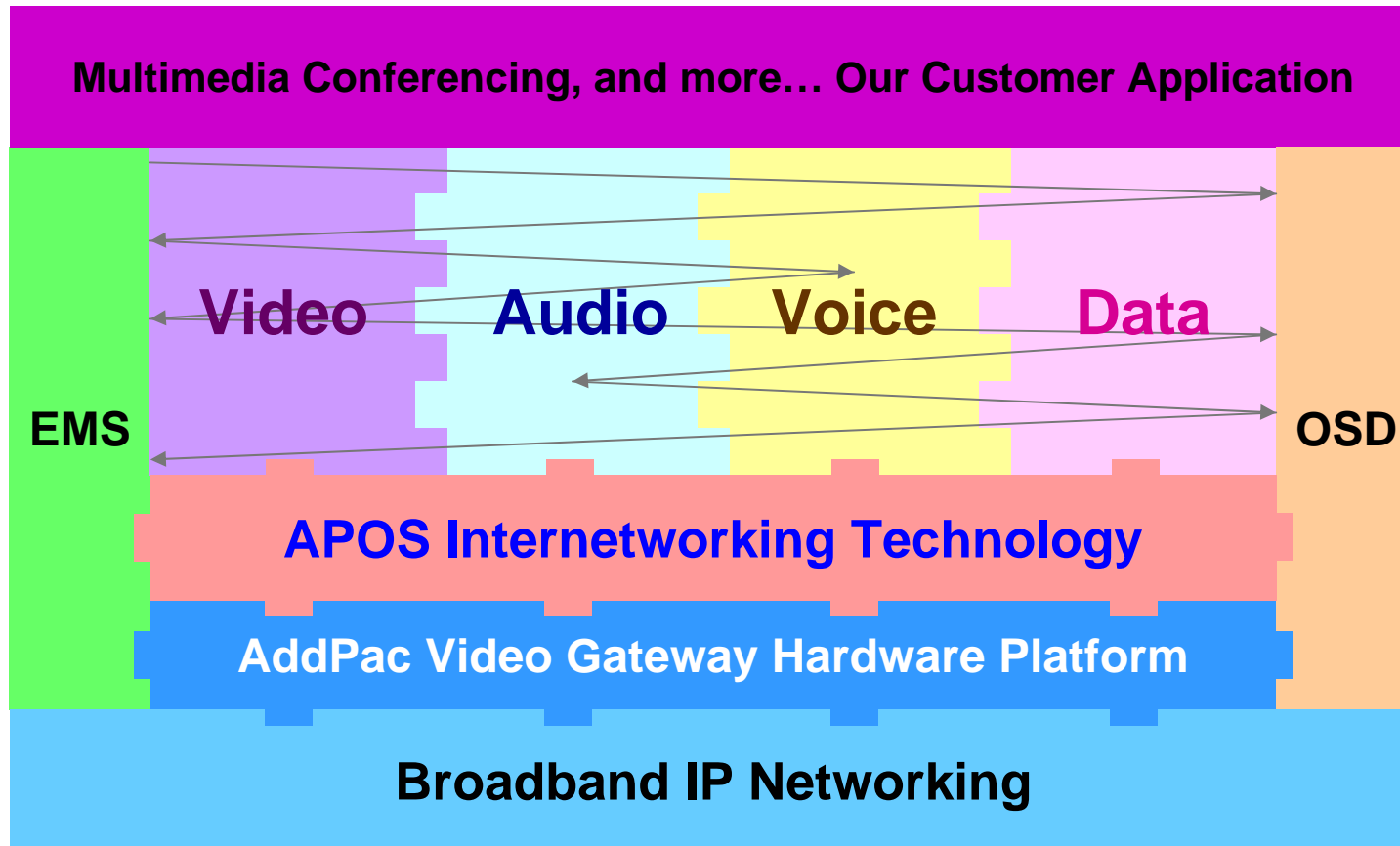
AP5850 Multiservice Router

High-End Multiservice Router Solution



Multimedia Service

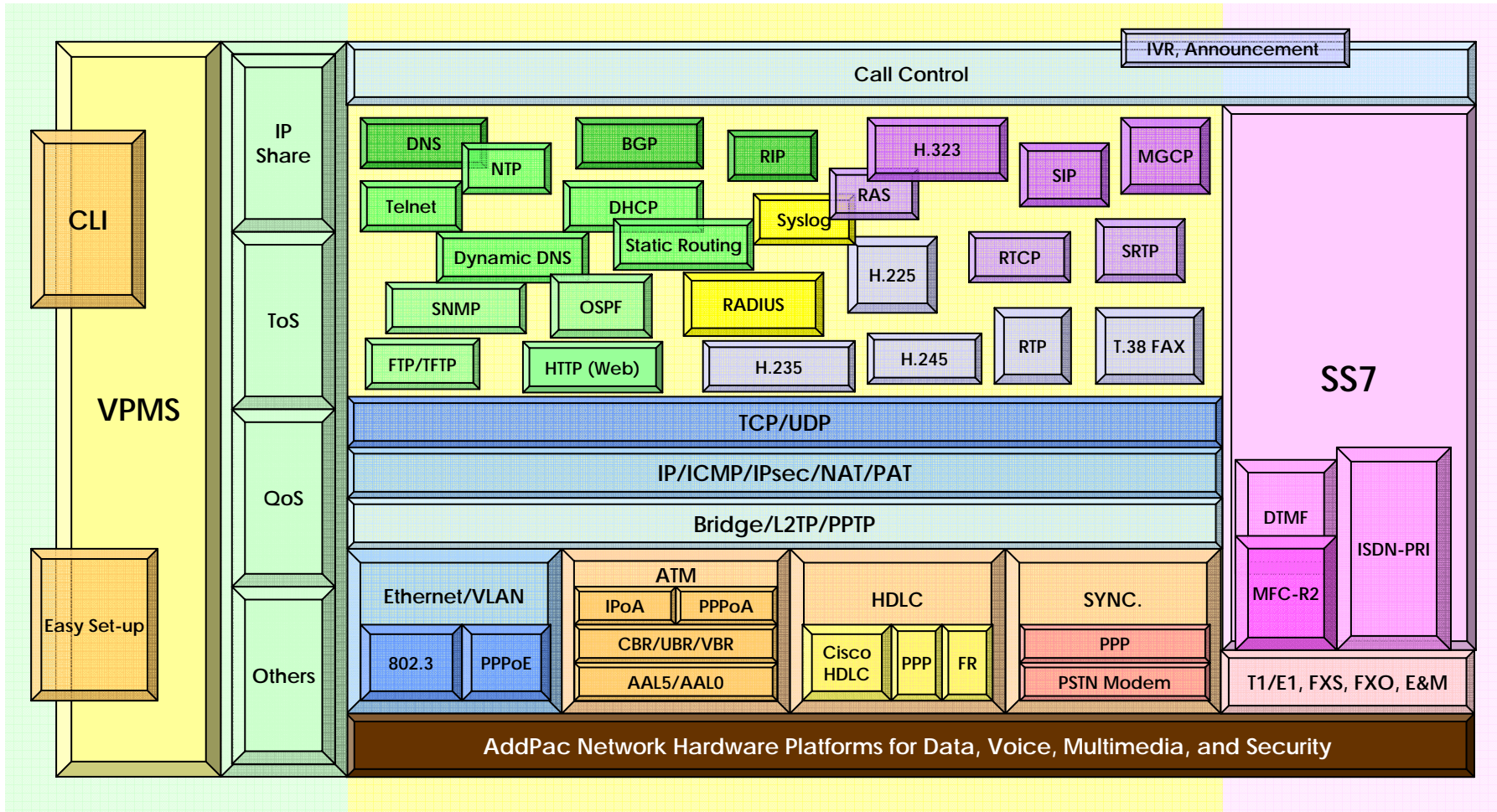
AP5850 Multiservice Router



- APOS : AddPac Internetworking Operating System
- OSD : On- Screen Display
- EMS : Element Management System

APOS Internetworking Protocol Stack

AP5850 Multiservice Router



Hardware Specification

AP5850 Multiservice Router

64bit
CPU

High-end
DSP

- **High Performance RISC Microprocessor Computing Power**
- **Main Chassis**
 - **Network Interface**
 - Four(4) 10/100Mbps Fast Ethernet
 - One(1) RS-232C Console (RJ45)
 - **Five(5) Multiservice Interface Module Slots**
 - **Dual Power Supply for Redundancy**



AddPac

www.addpac.com

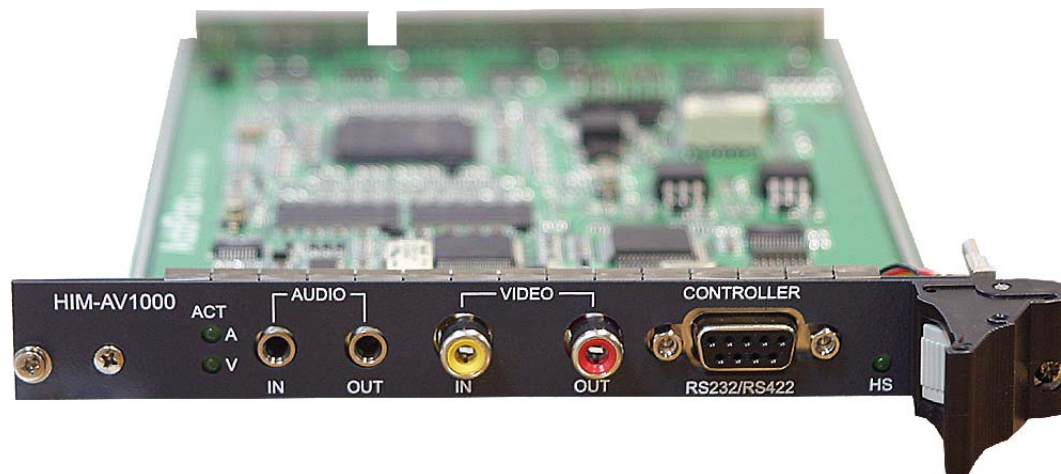
Hardware Specification

AP5850 Multiservice Router

64bit
CPU

High-end
DSP

- **HIM-AV1000 Module**
 - High quality Audio and Video Codec
 - Compact PCI Style Hot-Swap Function
 - Active LEDs
 - High-End Programmable DSPs
 - Concurrent Different Video/Audio Codec Support
 - RS232/RS422 DB-9 Interface for External Camera Control
 - H.263, MPEG4, H.264, JPEG, MP3, etc



Hardware Specification

AP5850 Multiservice Router

64bit
CPU

- **HIM-HDD1000 Module**
 - 2.5 Inch IDE HDD
 - PCI based Hard Disk Controller
 - Compact PCI Style Hot-Swap Function
 - RAID1 Configuration for Fault Management (Dual HDD)
 - USB 2.0 Interface Support
 - PC File System Support







Hardware Specification

AP5850 Multiservice Router

64bit
CPU

- **WAN Interface Module**

HIM-ATMOC3-1		1-Port OC3 155Mbps ATM Network Interface Module
HIM-ATMDS3-1		1-Port DS3 45Mbps ATM Network Interface Module
HIM-V35FR2		2-Port V.35 Interface Module
HIM-V35FR6		6-Port V.35 Interface Module
HIM-GE1		1-Port Gigabit Ethernet Module
HIM-FELAN6		6-Port Fast Ethernet Module

ATM Service and Features

AP5850 Multiservice Router

- **ATM PVC UNI3.0, 3.1, 4.0 Support**
- **RFC1483 and RFC1577 based IPoA Service**
- **PPPoA Services**
- **IPoA Service**
- **ATM Classes of Service Support**
 - **ATM PVCs and SVCs Service**
 - **CBR, rt-VBR, nrt-VBR, UBR, and UBR+ Support**
 - **AAL0 ,AAL5**
- **PCR and MCR Service**
- **ATM Traffic Management Support**
- **VBR Type 1 and Type2 Support**
- **Provide Priority Level of 8-layer with ATM Pace Control**
- **Traffic shaping on a per-VC basis**

WAN Service and Features

AP5850 Multiservice Router

- **Point-to-Point Protocol (PPP) Support**
- **PPPoE Support**
- **Frame-Relay PVC with Inverse ARP Support**
- **High-level Data Link Control (HDLC) Protocol Support**
- **HDLC Encapsulation Support (Interoperability with CISCO HDLC)**

Video Service and Features

AP5850 Multiservice Router

- **Various Video Networking Interface**
 - Composite (RCA), S-Video
- **High-performance Video Codec Support**
 - H.263, MPEG-4, JPEG, and H.264
- **Powerful Image Resolution Support**
 - QCIF(176x144), CIF(352x288), QVGA(320x240), and VGA(640x480)
- **Up to 30fps at 1Mbps with VGA-Resolution(MPEG-4)**
- **64Kbps to 4Mbps Operating Video Traffic Bandwidth**
- **High-end Error Resilient Against Various Packet Error**

Network Service and Features

AP5850 Multiservice Router

- **Network Managements**
 - Standard SNMP Agent (MIB v2) Support
 - Remote Management using Console, Telnet
 - Web based Management using HTTP Server Interface
- **Security Functions**
 - Standard & Extended IP Access List
 - Enable/Disable for Specific Network Protocols
 - Multi-level User Account Management
 - Auto-disconnect for Telnet/Console Sessions
 - PPP User Authentication Supports (PAP & CHAP)
- **Operation & Managements**
 - System Performance Analysis for Process, CPU, Connection Interface
 - Debugging, System Auditing, and Diagnostics Support
 - System Booting and Auto-rebooting with Watchdog Feature
 - System Managements with Data Logging
 - IP Traffic Statistics with Accounting

Network Service and Features

AP5850 Multiservice Router

- **Network Managements**
 - DHCP Server & Relay Functions
 - Network Address Translation (NAT) Function
 - Port Address Translation (PAT) Function
 - Transparent Bridging (IEEE Standard) Function
 - Spanning Tree Bridging Protocol Support
 - Remote Bridging Support
 - Concurrent Routing and Bridging Support
 - Cisco Style Command Line Interface (CLI)
 - Network time Protocol (NTP) Support

AP5850 Multiservice Router

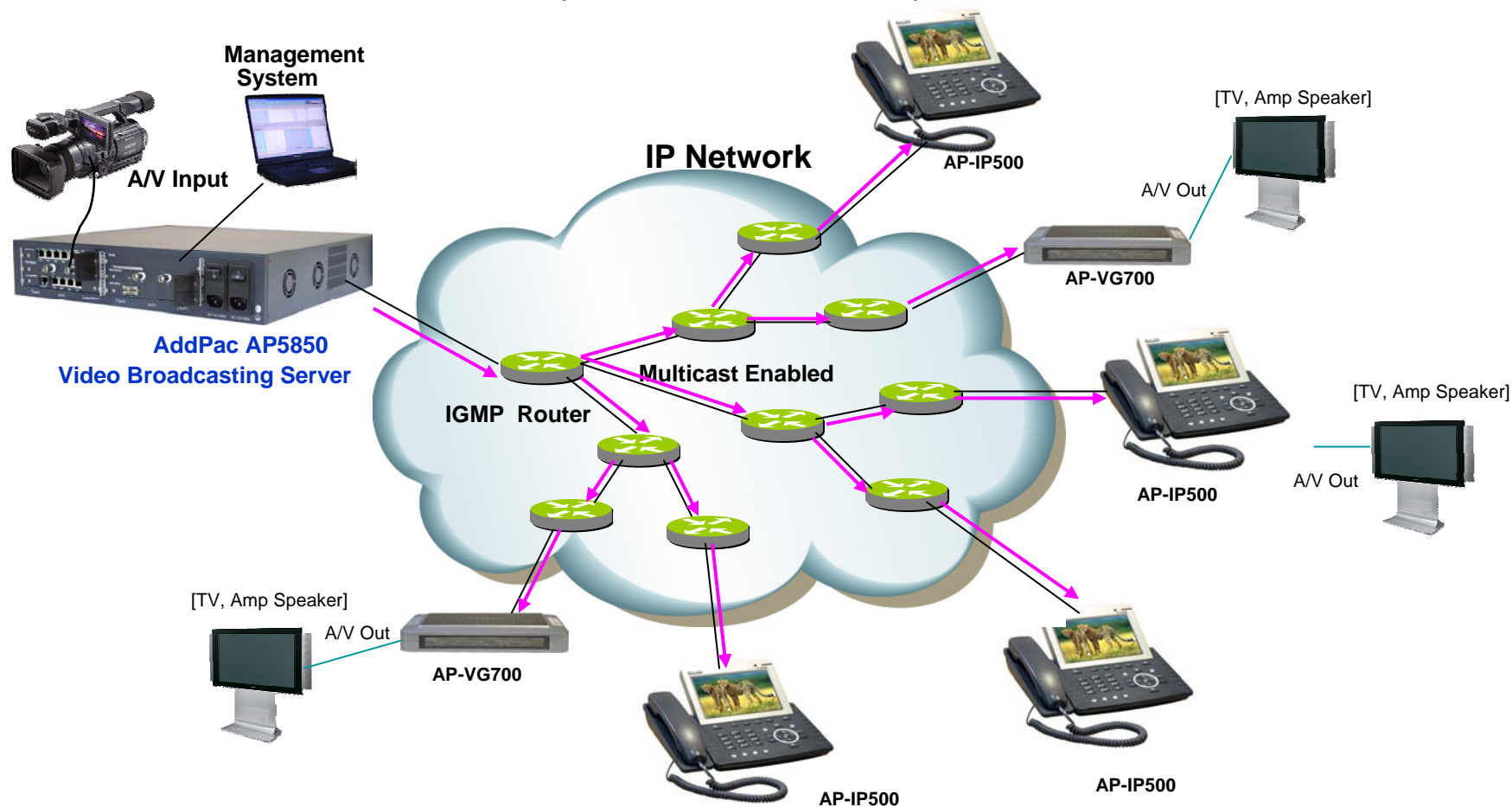
Application Area

- Audio/Video Real-time Broadcasting
- Media Encoder for VoD Application
- ATM Router Application
- Multi-Channel V.35 Serial Interface Router

Audio/Video Real-time Broadcasting

AP5850 Multiservice Router

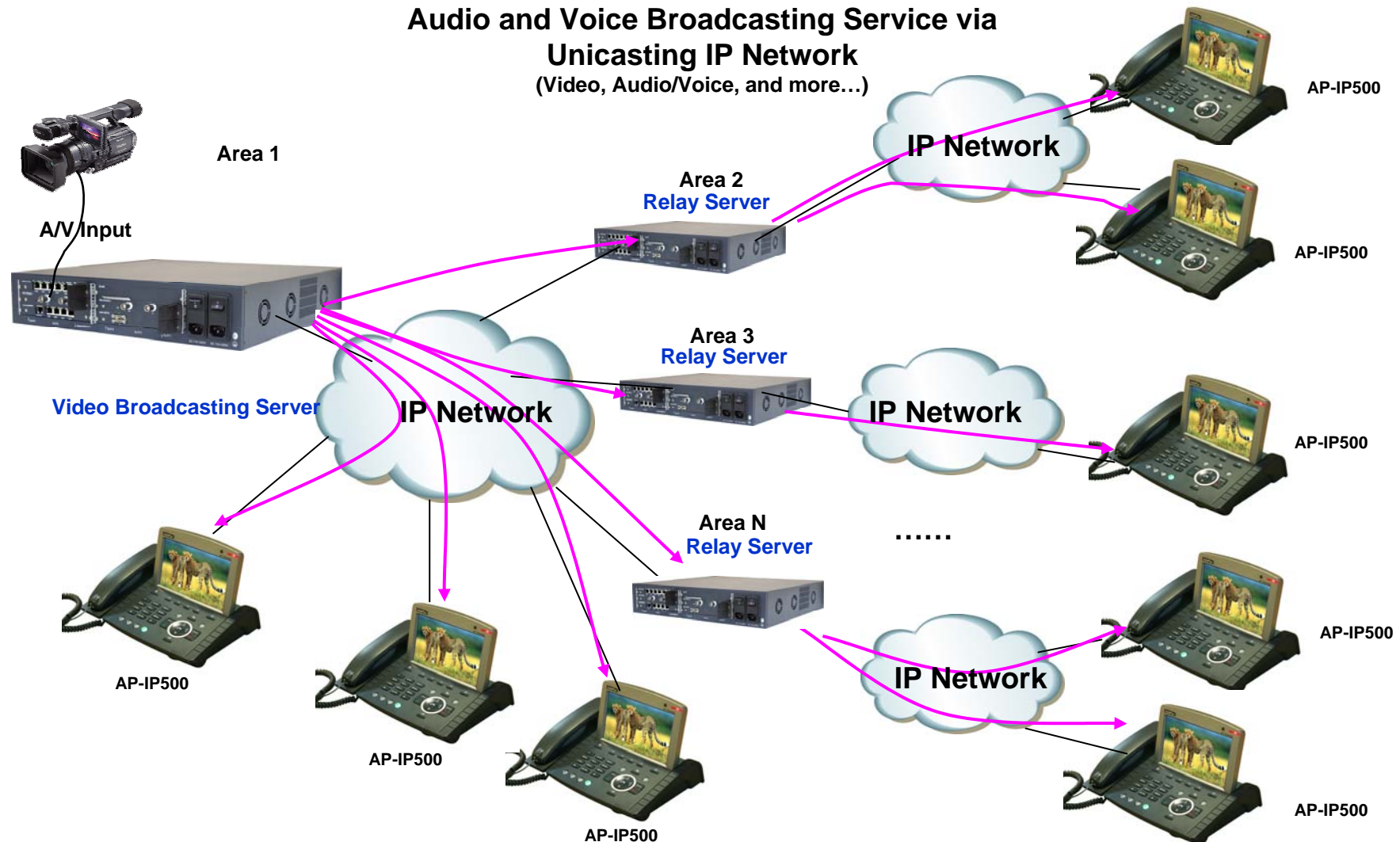
Audio and Video Broadcasting Service via
Multicasting IP Network
(Video, Audio/Voice, and more...)



Audio/Video Real-time Broadcasting

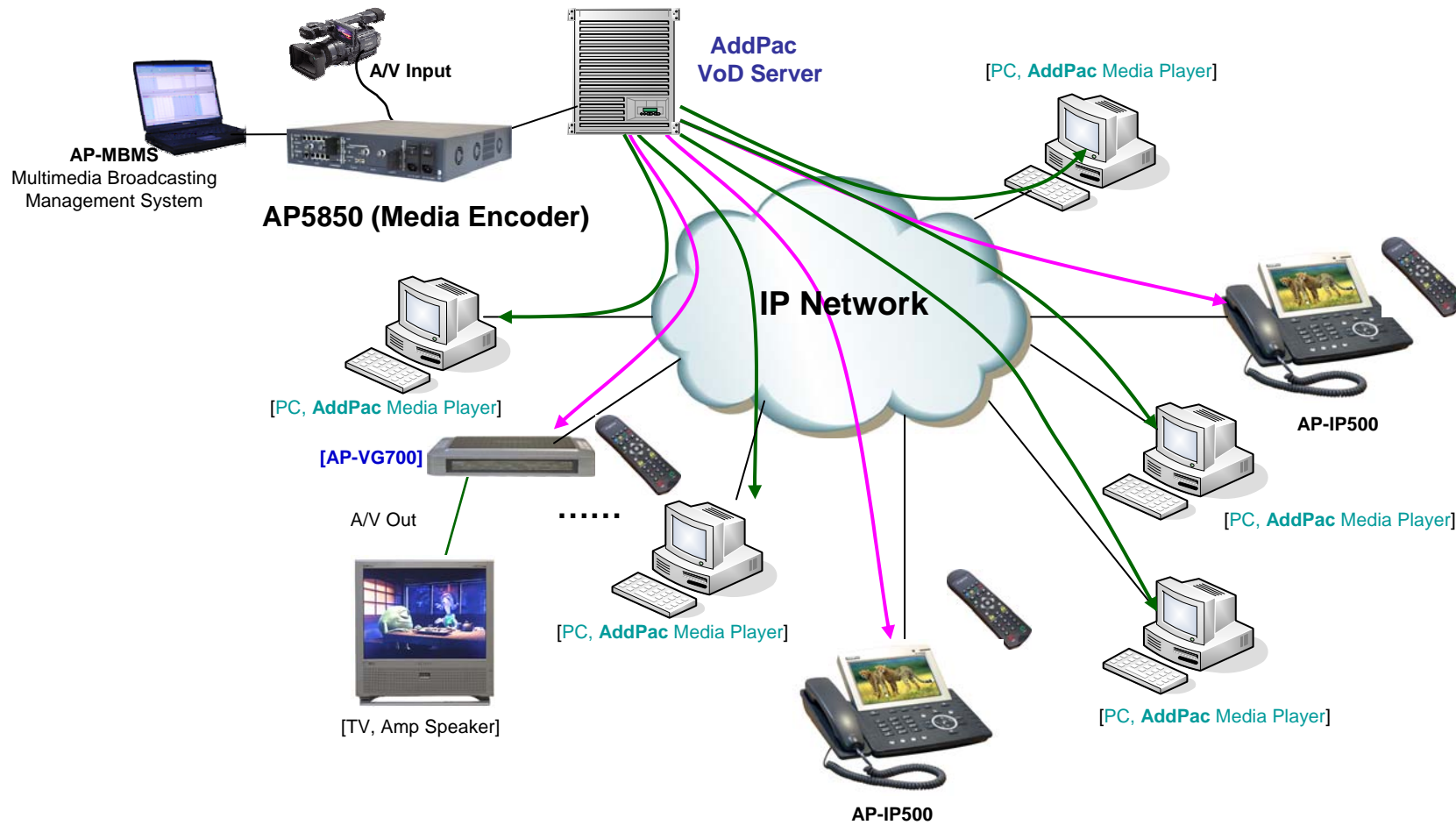
AP5850 Multiservice Router

Audio and Voice Broadcasting Service via
Unicasting IP Network
(Video, Audio/Voice, and more...)



Media Encoder for VoD Service

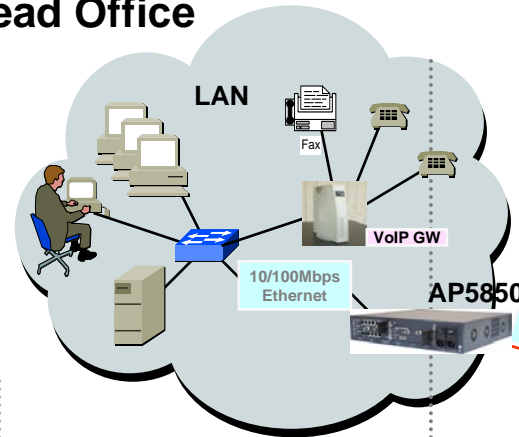
AP5850 Multiservice Router



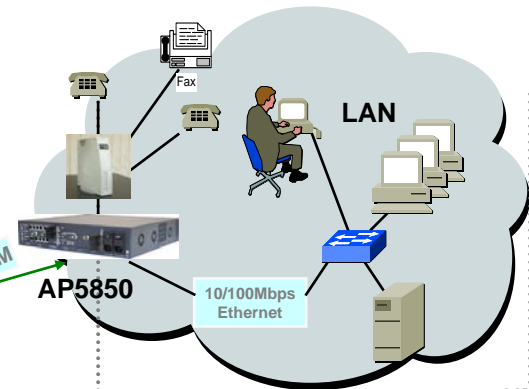
ATM Router Application

AP5850 Multiservice Router

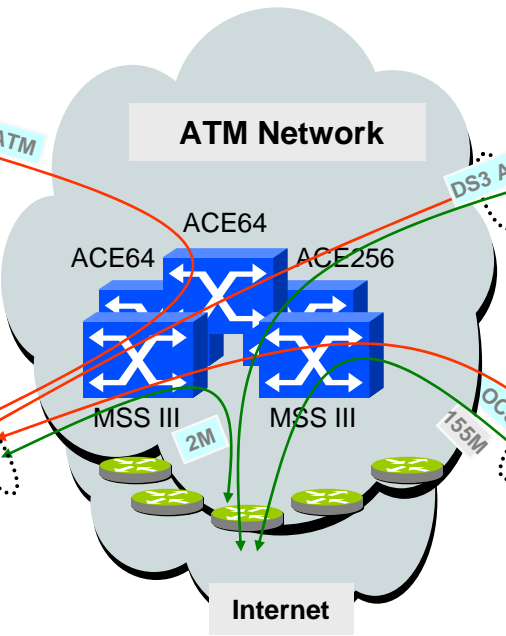
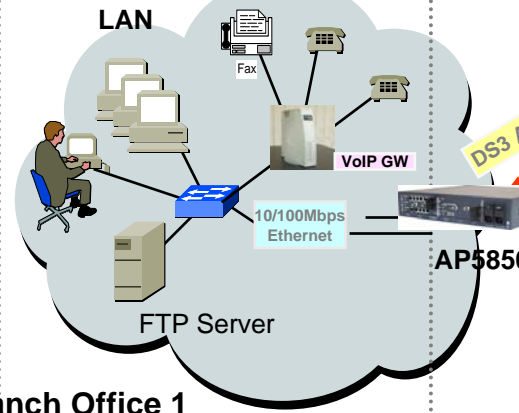
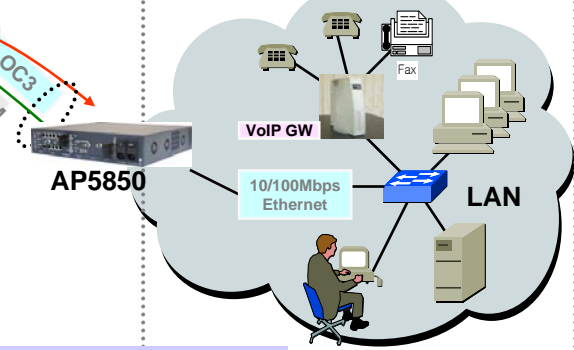
Head Office



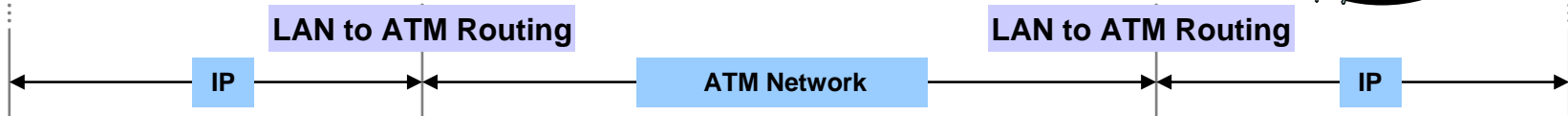
Branch Office 2



Branch Office 3

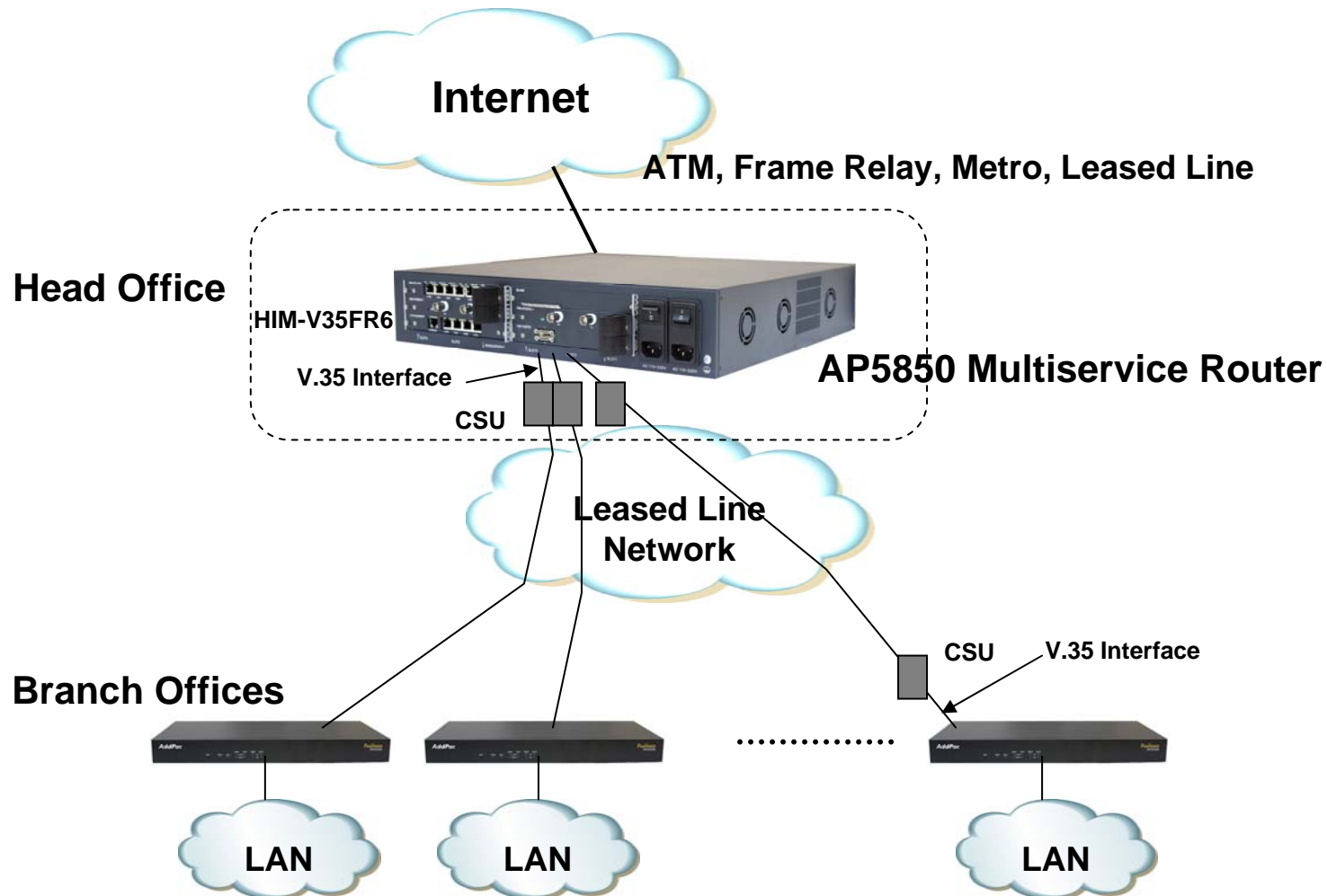


Branch Office 1



Multi-Channel V.35 Interface Router

AP5850 Multiservice Router



Ordering Information

- **AP5850 Multiservice Router Hardware**
 - AP5850 Multiservice Router Main Body
 - High-End RISC Microprocessor
 - 4-ports 10/100Mbps Fast Ethernet and 1-port RS-232C Console
 - Including Network Cable Set & Ext. Power Supply, etc.
 - Option Modules
- **Built-in APOS Internetworking Software for AP5850**
- **Including 1 Year Hardware Warranty**
- **Product Documents**
 - Install and Operation Guide (PDF)
- **Pricing**
 - AddPac Technology Regional Sales Manager
 - Authorized Sales and Marketing Representatives
 - Please Contact www.addpac.com

AP5850 Multiservice Router

Thank you!

AddPac Technology Co., Ltd.
Sales and Marketing

Phone +82.2.568.3848 (KOREA)

FAX +82.2.568.3847 (KOREA)

E-mail sales@addpac.com