

VPMS v2.0 for MSSQL

Installation manual

AddPac Technology Co., Ltd.

3F, Jeong-Am Bldg., 769-12 Yeoksam-dong

Kangnam-gu Seoul Korea

TEL: (02) 568-3848

FAX: (02) 568-3847

E-mail : info@addpac.com

<http://www.addpac.com>

2005-05-13

V1.60

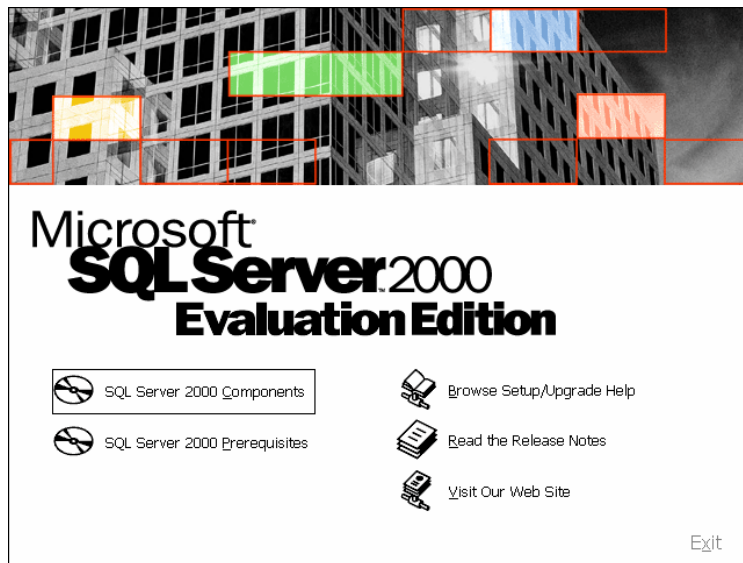
목차

1. DATABASE INSTALLATION.....	- 3 -
1.1. MSSQL SERVER	- 3 -
2. VPMS SERVER	- 11 -
2.1. INSTALL JRE (JAVA RUNTIME ENVIRONMENT)	- 11 -
2.2. VPMS SERVER INSTALLATION	- 17 -
2.3. VPMS DATABASE CONFIGURATION	- 21 -
2.3.1. MSSQL Database Configuration.....	- 21 -
2.3.2. MSSQL Agent Configuration.....	- 24 -
2.4. SERVER DATABASE CONFIGURING	- 29 -
3. VPMS CLIENT	- 30 -
3.1. VPMS CLIENT INSTALLATION	- 30 -
3.2. CLIENT DATABASE SETTING.....	- 34 -
4. VPMS PROGRAM RUNNING	- 38 -
4.1. SERVER PROGRAM EXECUTION	- 38 -
4.2. CLIENT PROGRAM EXECUTION.....	- 39 -
4.3. TERA TERM INSTALLATION	- 41 -
5. AUTO UPGRADE SERVER INSTALLATION.....	- 44 -
5.1. CONFIGURE WEB SERVICE (IIS)	- 44 -
5.2. CONFIGURE FTP SERVER (IIS)	- 46 -

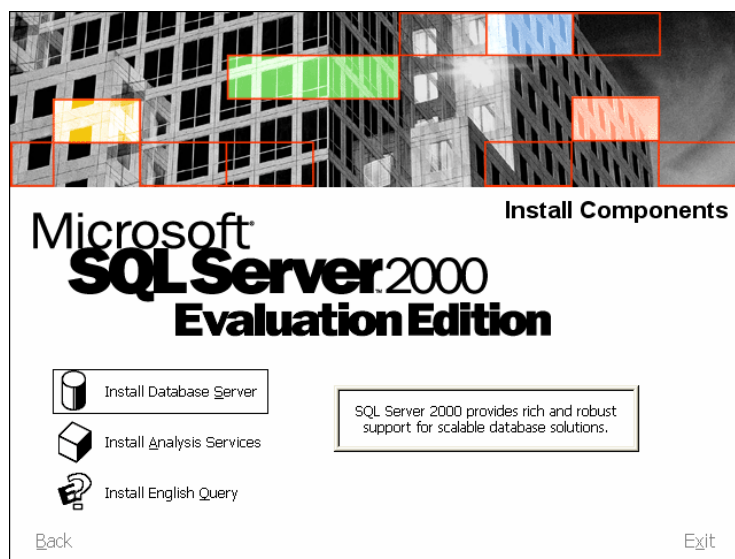
1. Database Installation

1.1. MSSQL Server

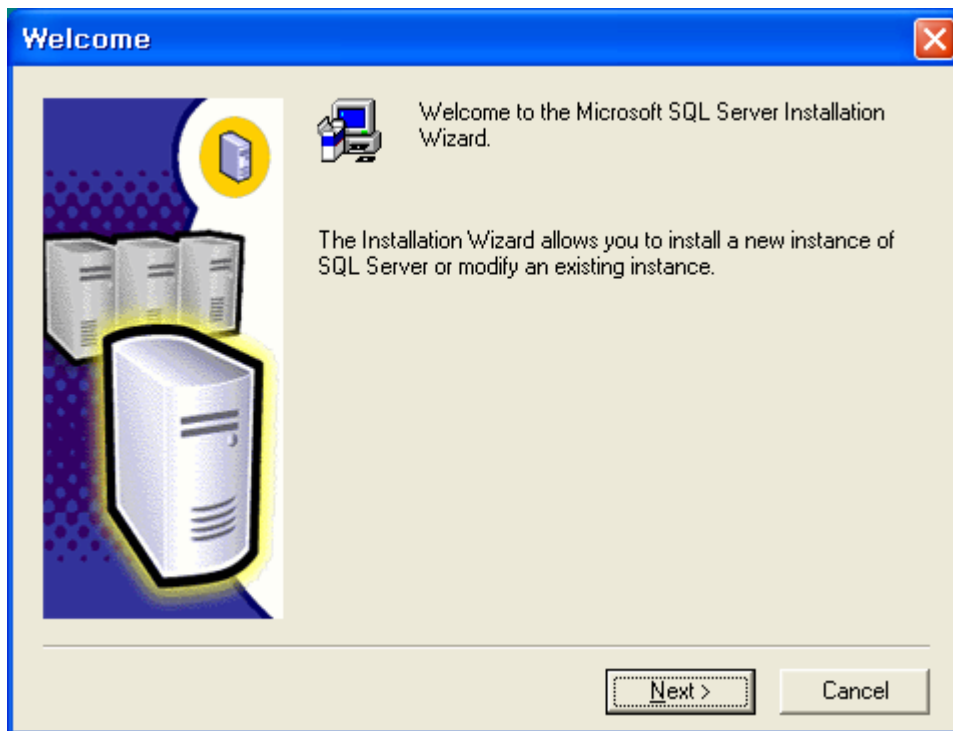
1) Put MS-SQL 2000 CD into the CD-ROM and select “SQL Server 2000 Components” as shown below.



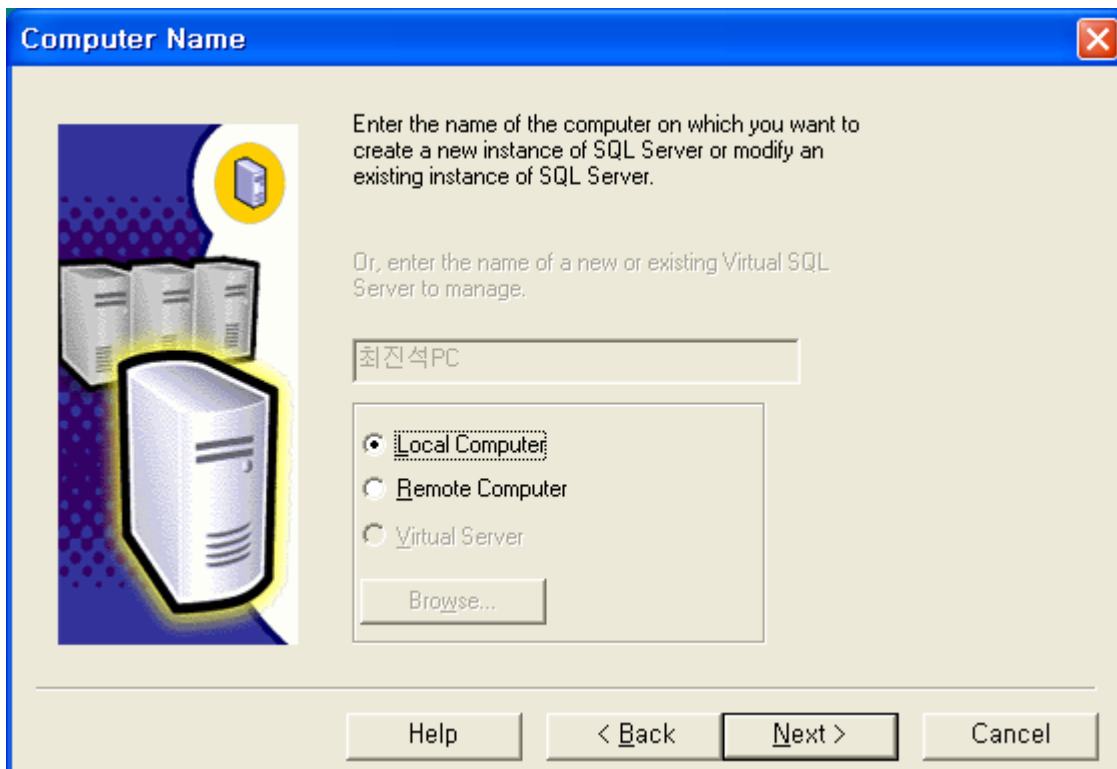
2) Select “Install Database Server”



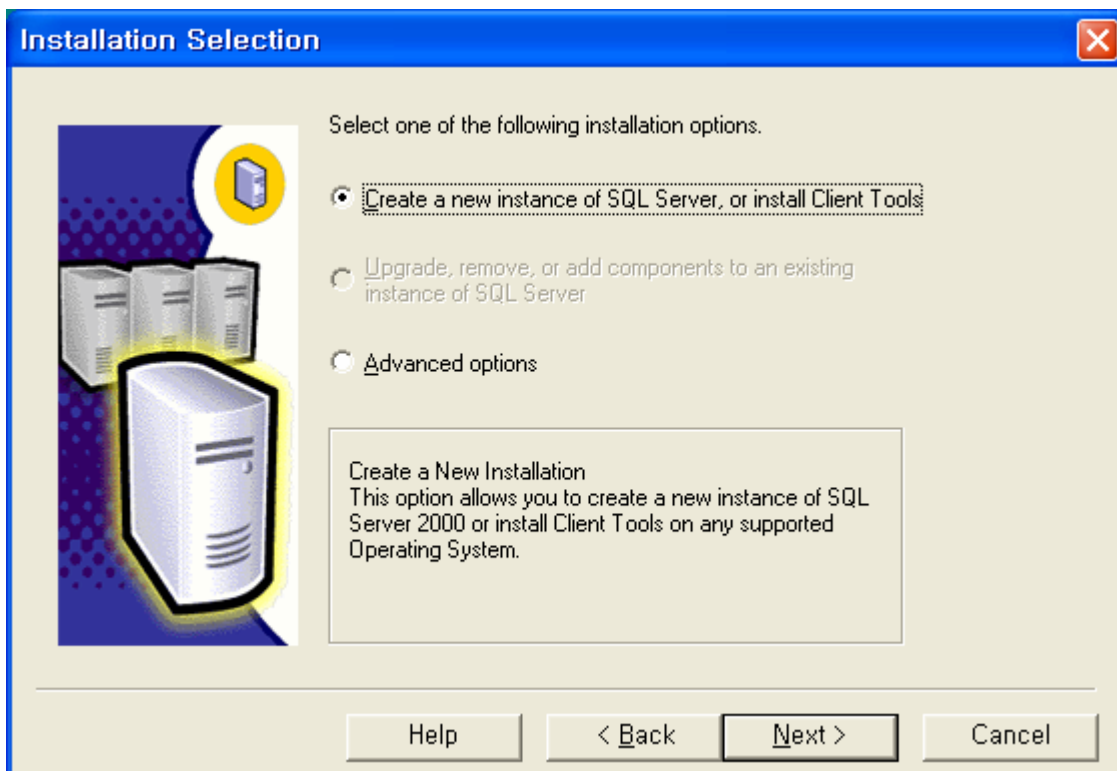
3) Click "Next>" button.



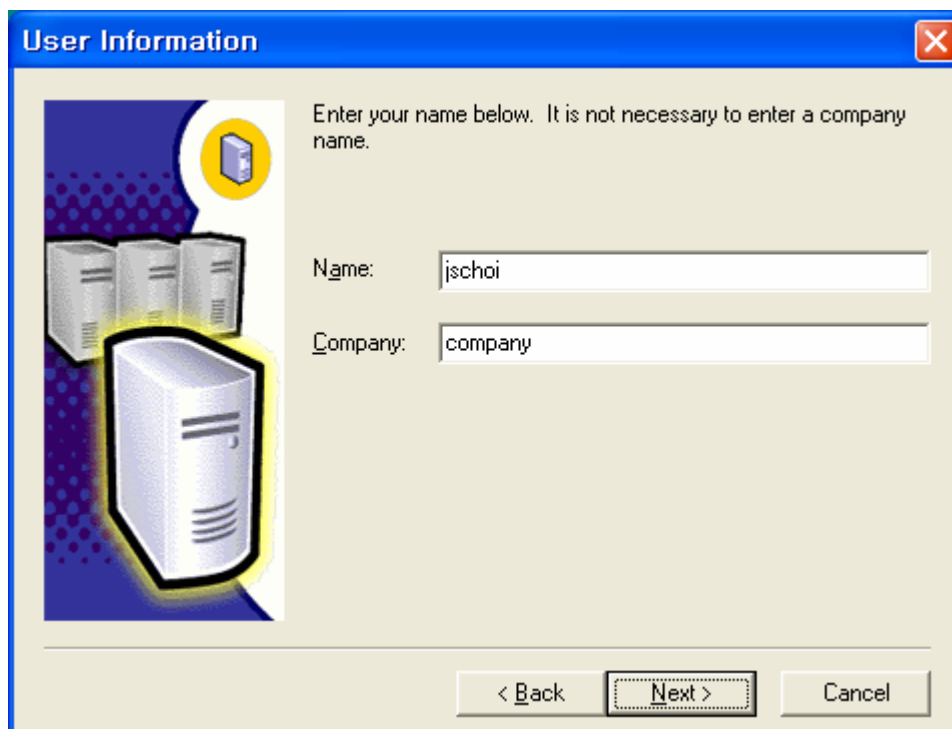
4) Select "Local Computer" and click "Next>" button.



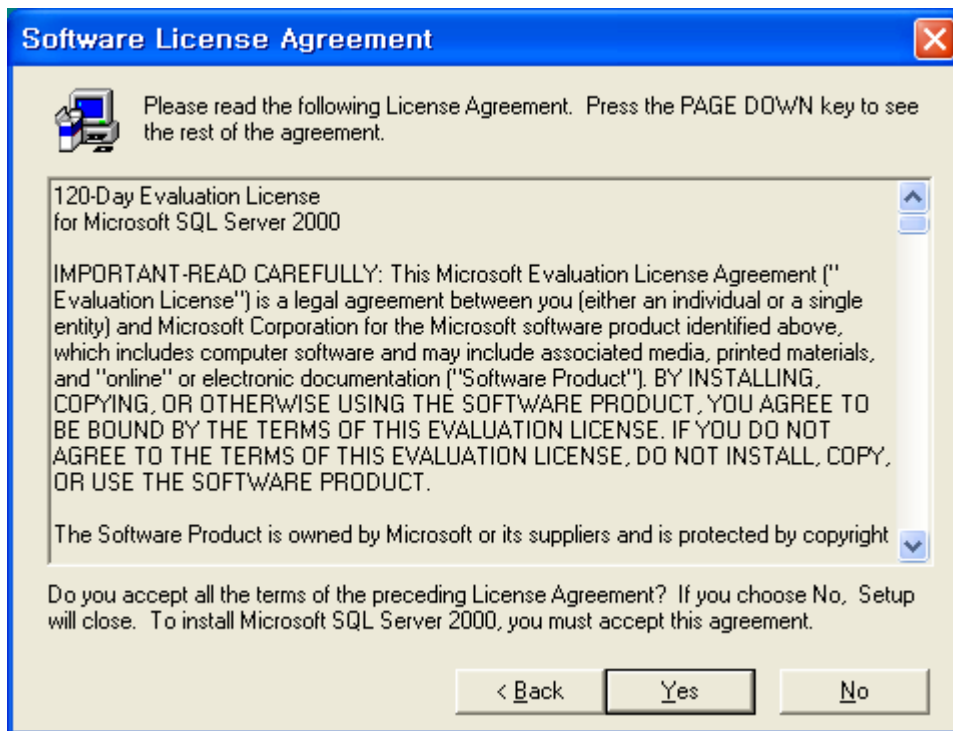
5) Select "Create a new instance of SQL Server, or install Client Tools" and click "Next>" button.



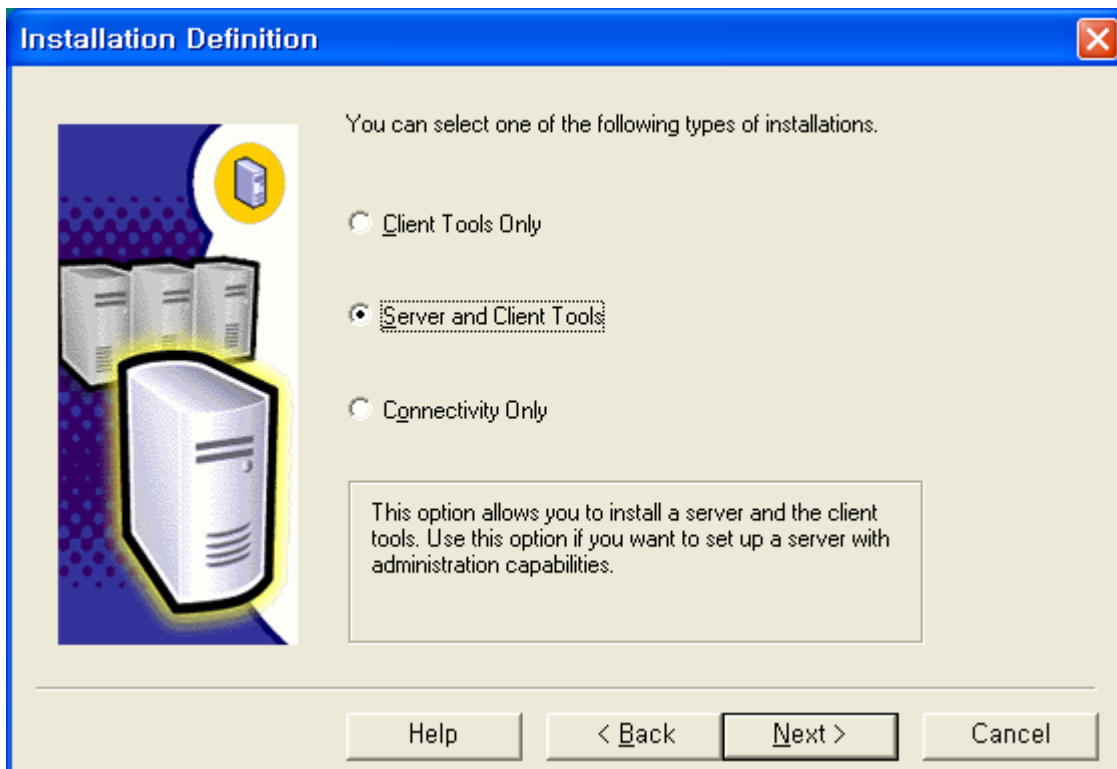
6) Enter "Name" and "Company". Click "Next>" button.



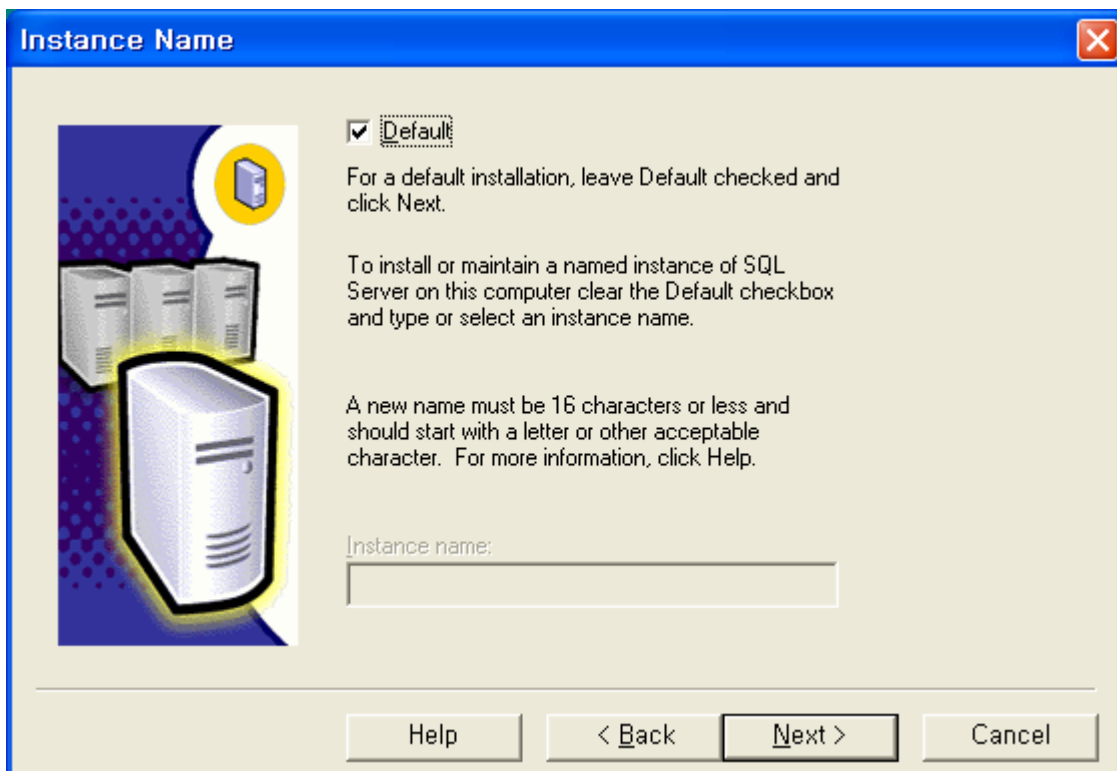
7) Click "Yes" button.



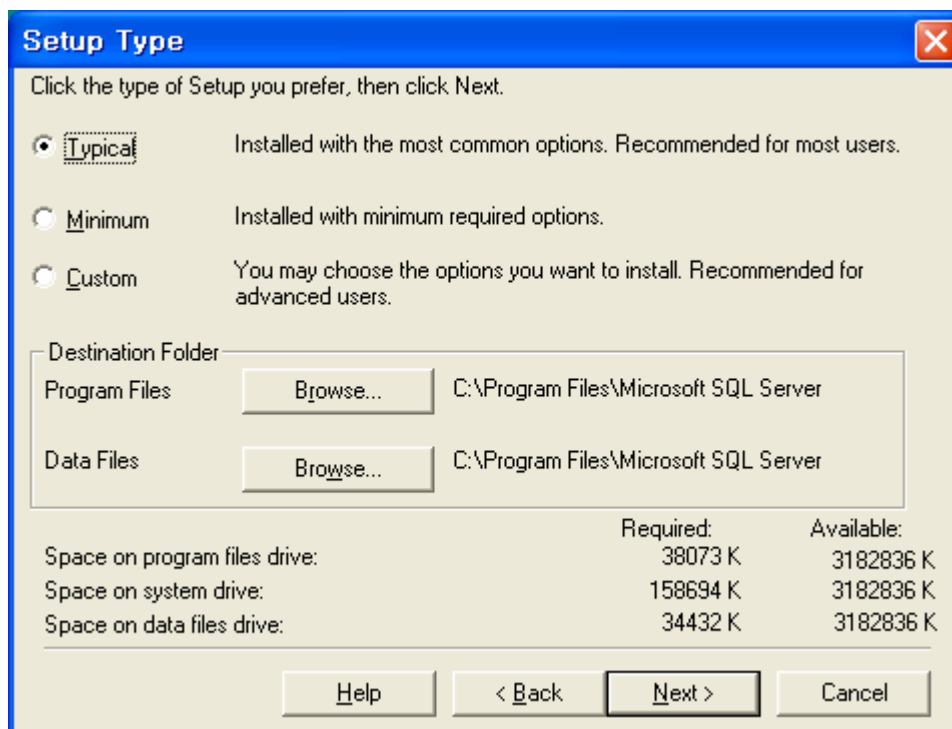
8) Select "Server and Client Tools" and click "Next>" button.



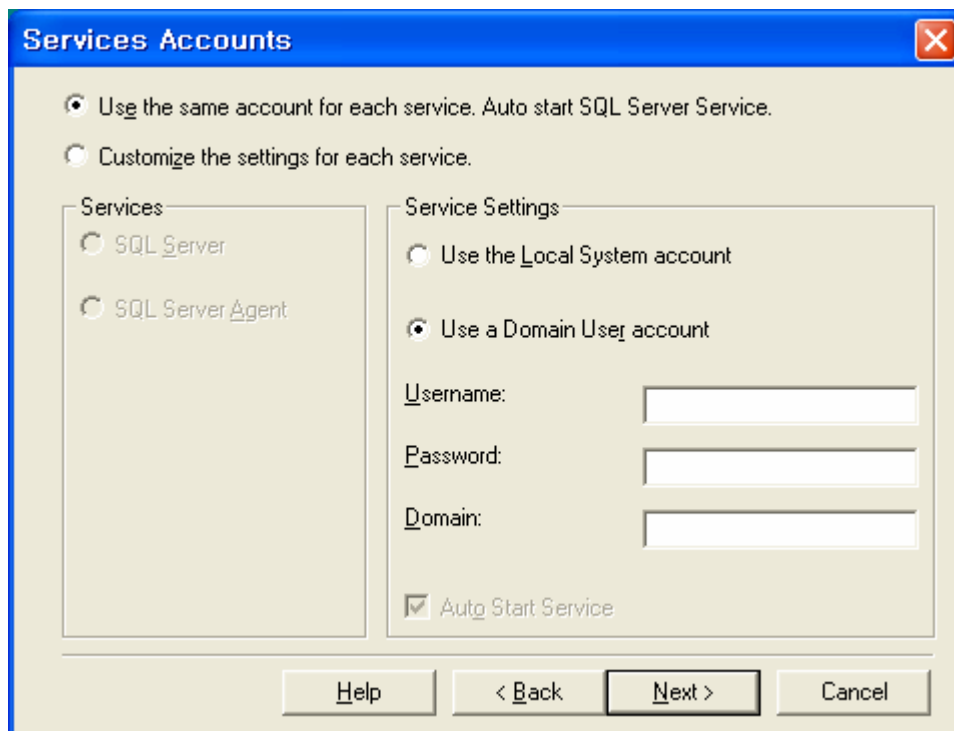
9) Check "Default" and click "Next>" button.



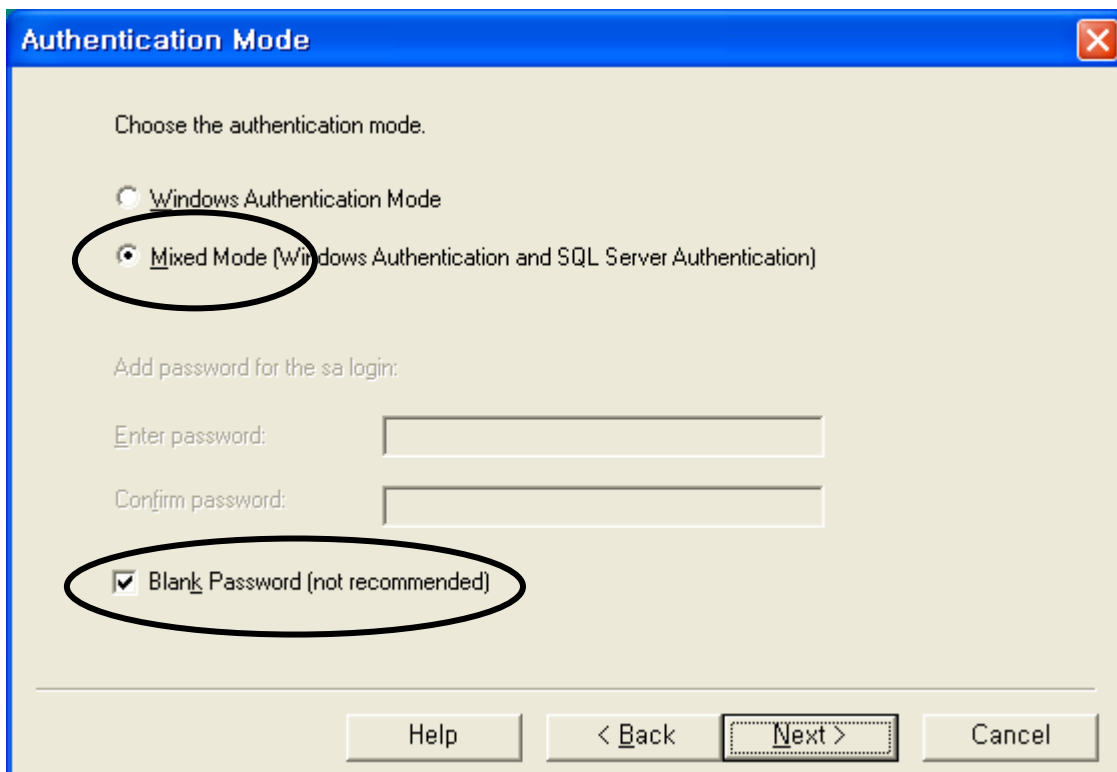
10) Select "Typical" and click "Next>" button.



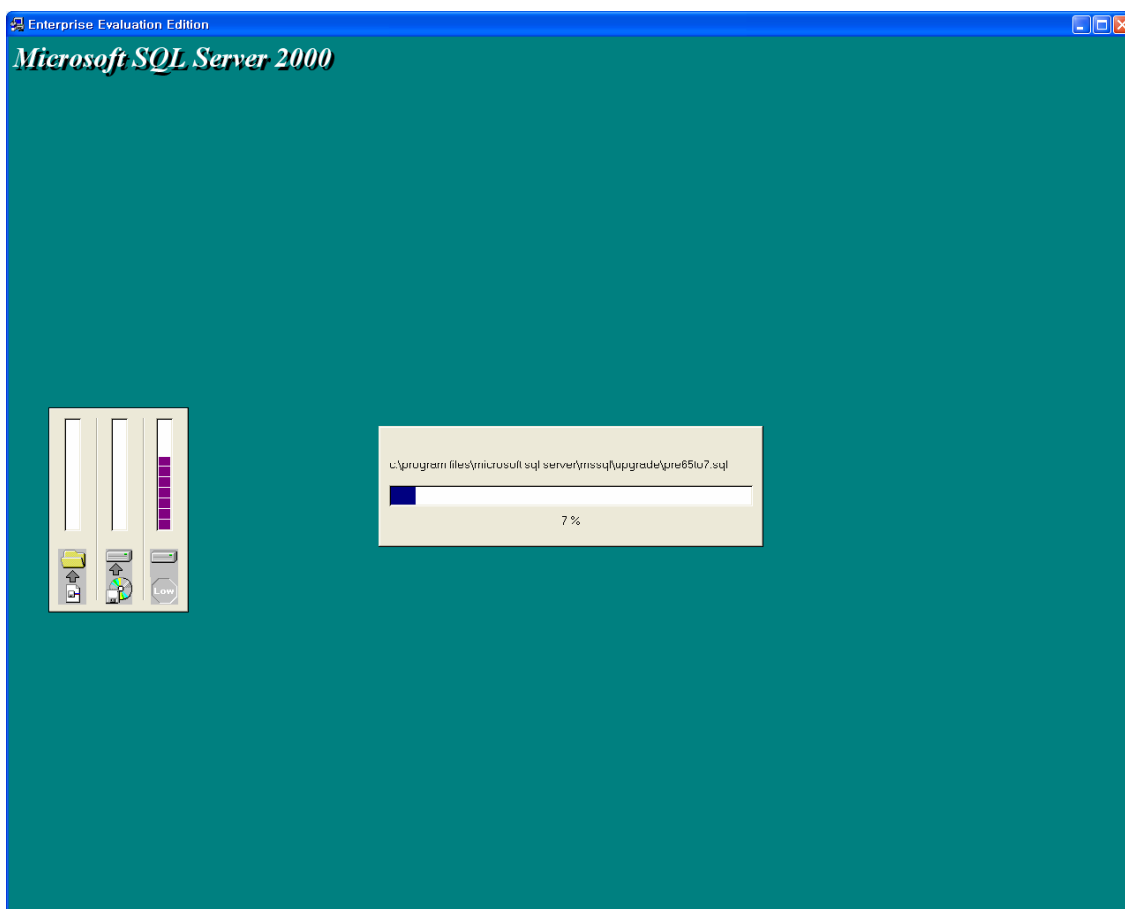
11) Select "Use a Domain User account" and remove "Username" and "Password" as shown below. Click "Next>" button.



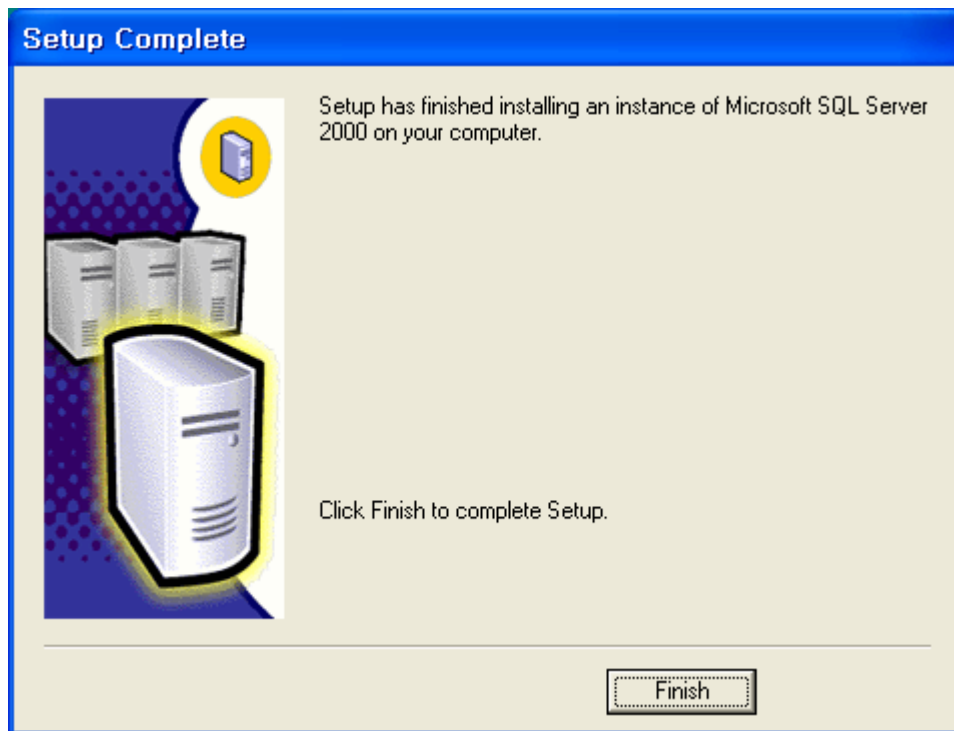
12) Select "Mixed Mode" and click "Next>" button.



13) Click "Next>" button to begin installation.



- 14) Click "Finish" button to complete setup.



2. VPMS Server

2.1. Install JRE (Java Runtime Environment)

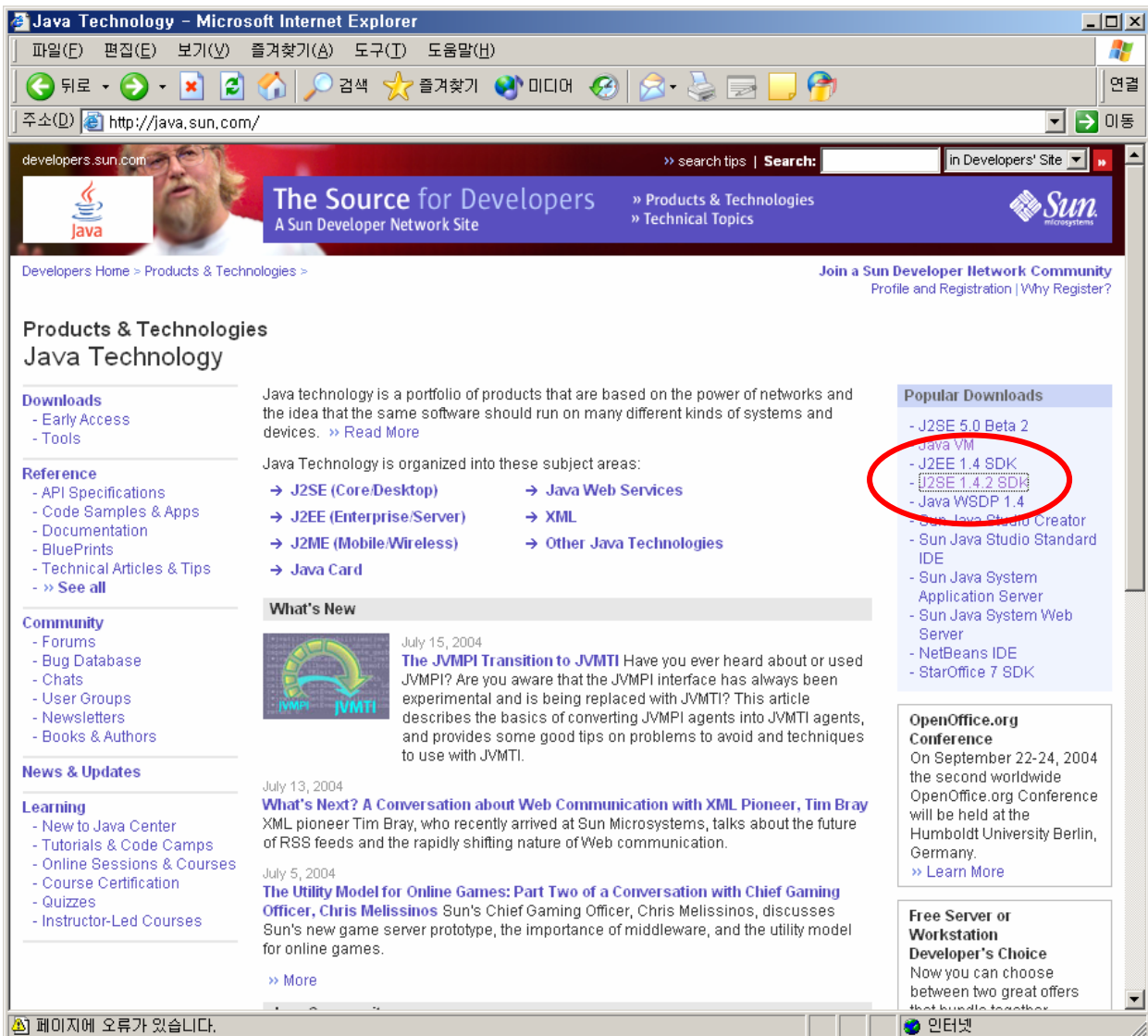
JRE(Java Runtime Environment) installation is required to activate MBMS server. If JRE has been already installed, you wouldn't need to install.

You can check this by executing 'java' command on DOS mode.

You can download and intall JRE through Java web(<http://java.sun.com>).

Installation procedure is as below.

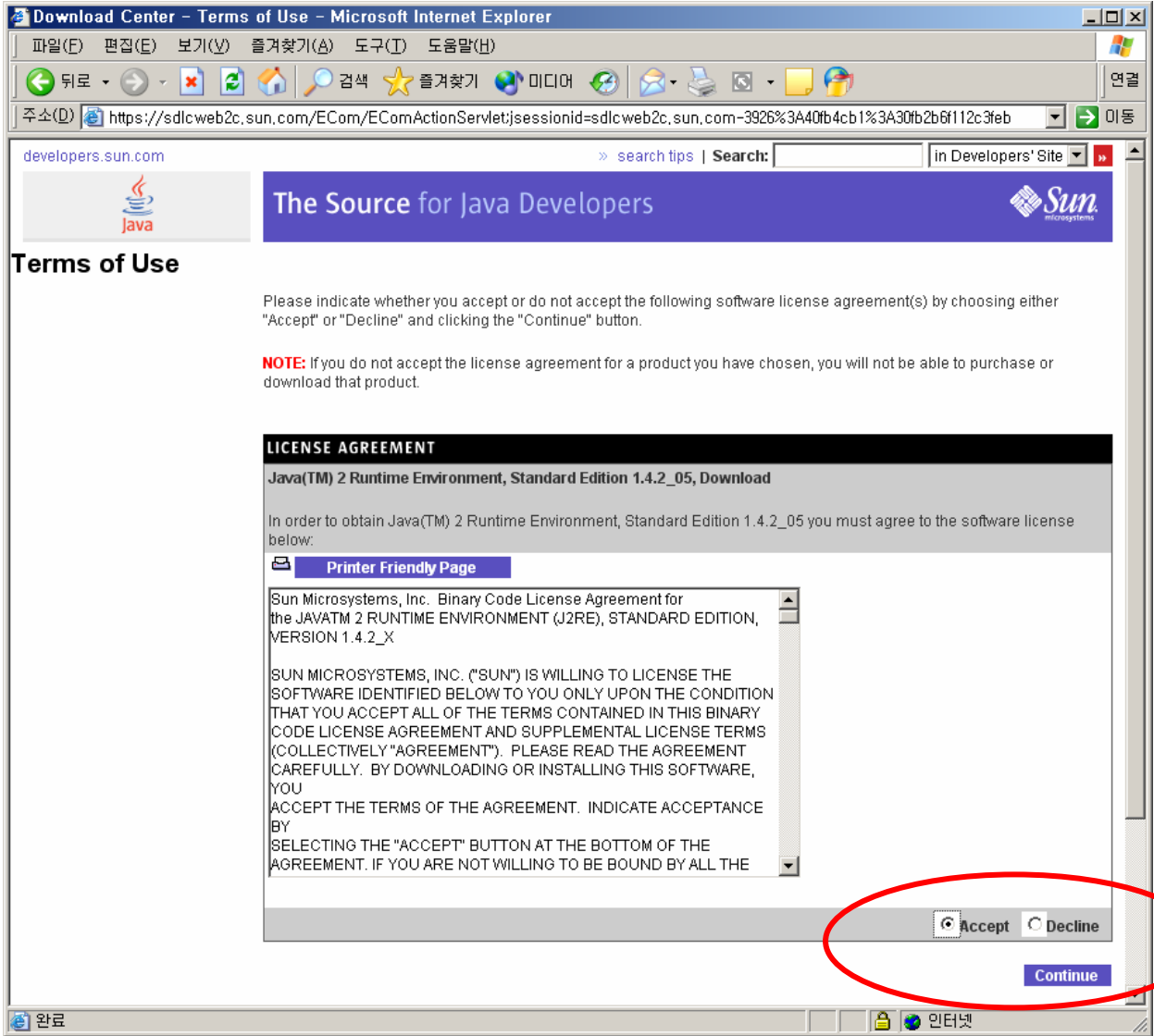
- 1) Visit Java web(<http://java.sun.com>).
- 2) Click the latest version(J2SE_1.4.2 SDK) on Popular Downloads category at the right section of the page.



3) Select J2SE v1.4.2_05 JRE or the latest version of JRE.



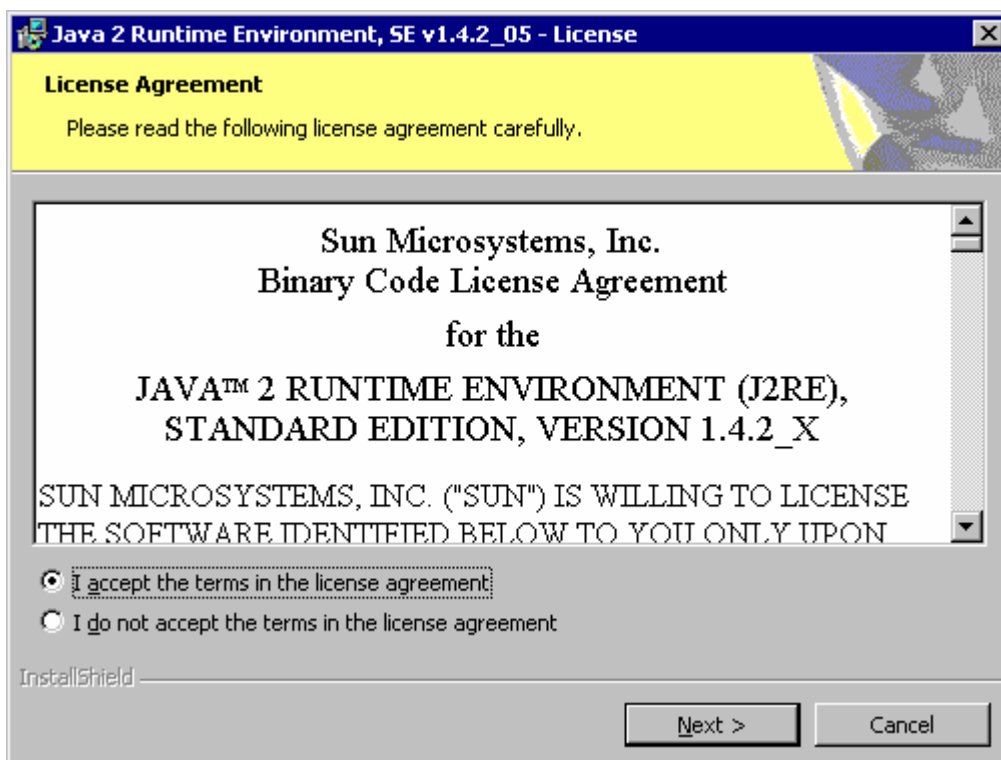
- 4) Accept agreement and proceed next.



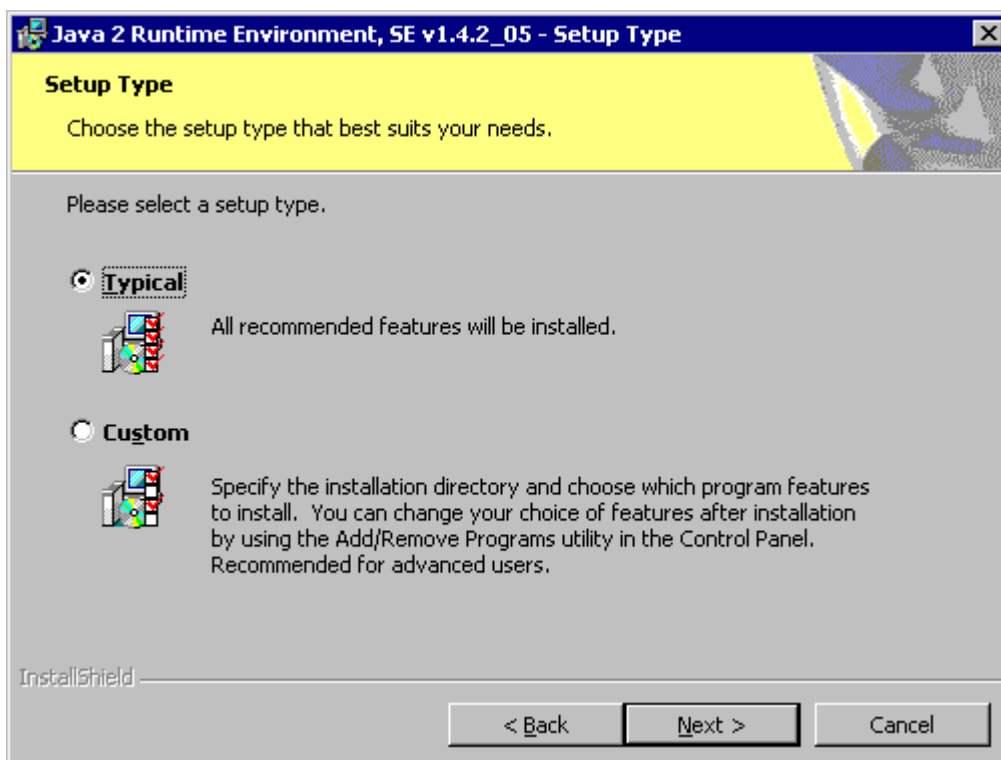
5) Download offline version of JRE windows Platform and install.



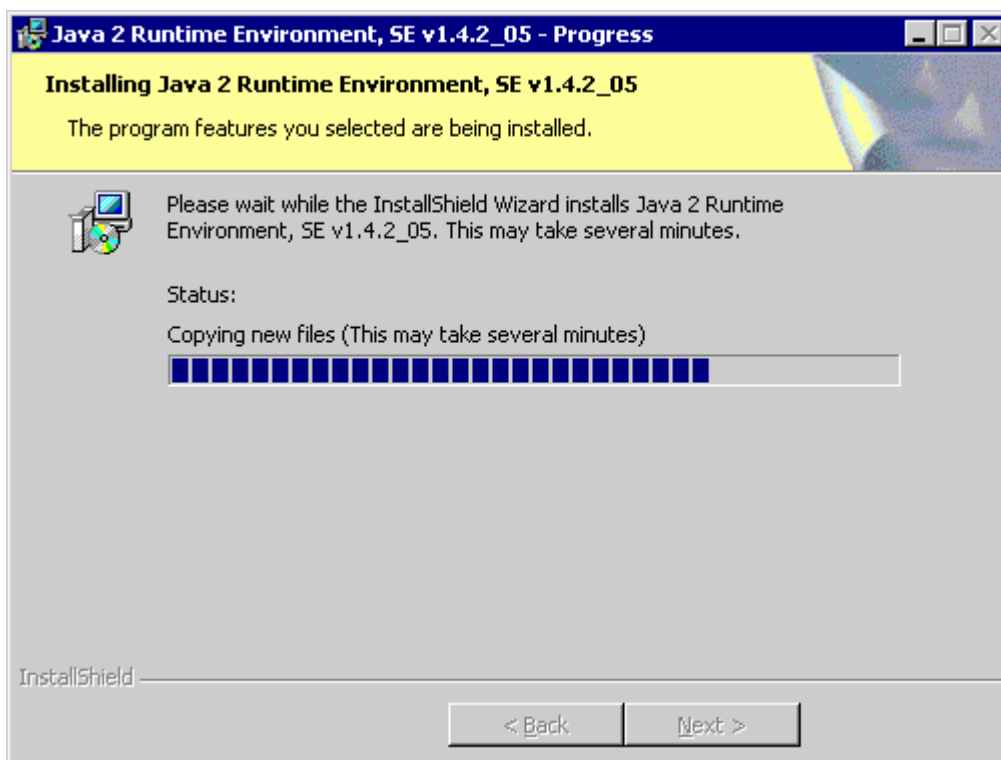
- 6) After executing downloaded file and accept the terms in the license agreement.



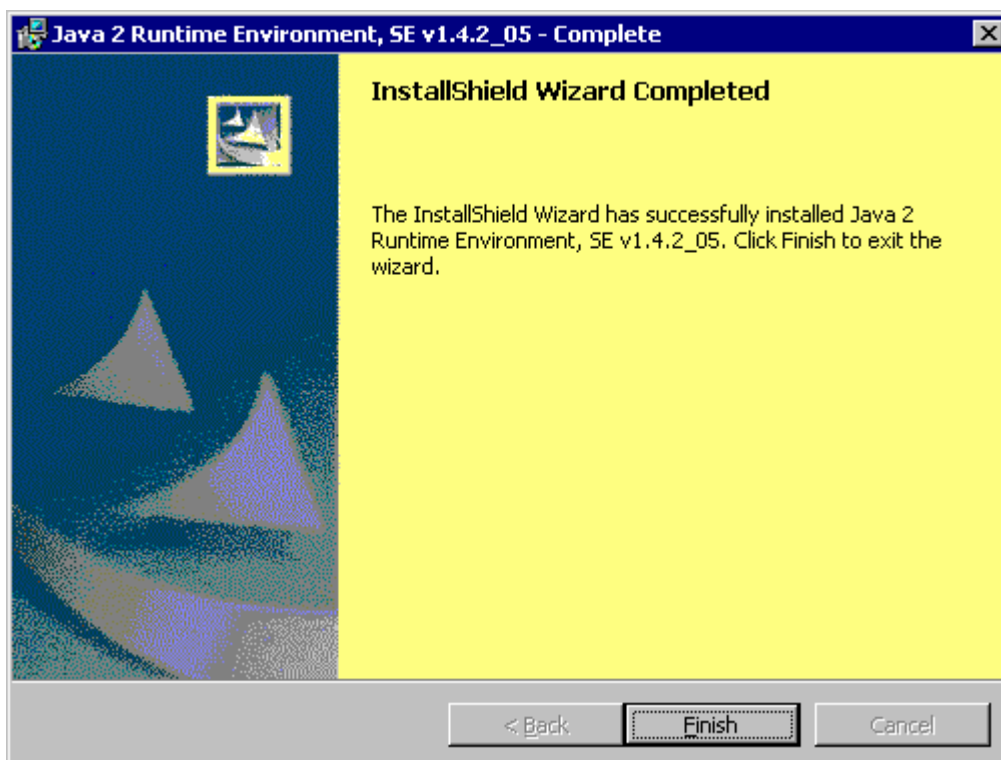
- 7) Select Typical mode.



8) Installation is being proceeded.



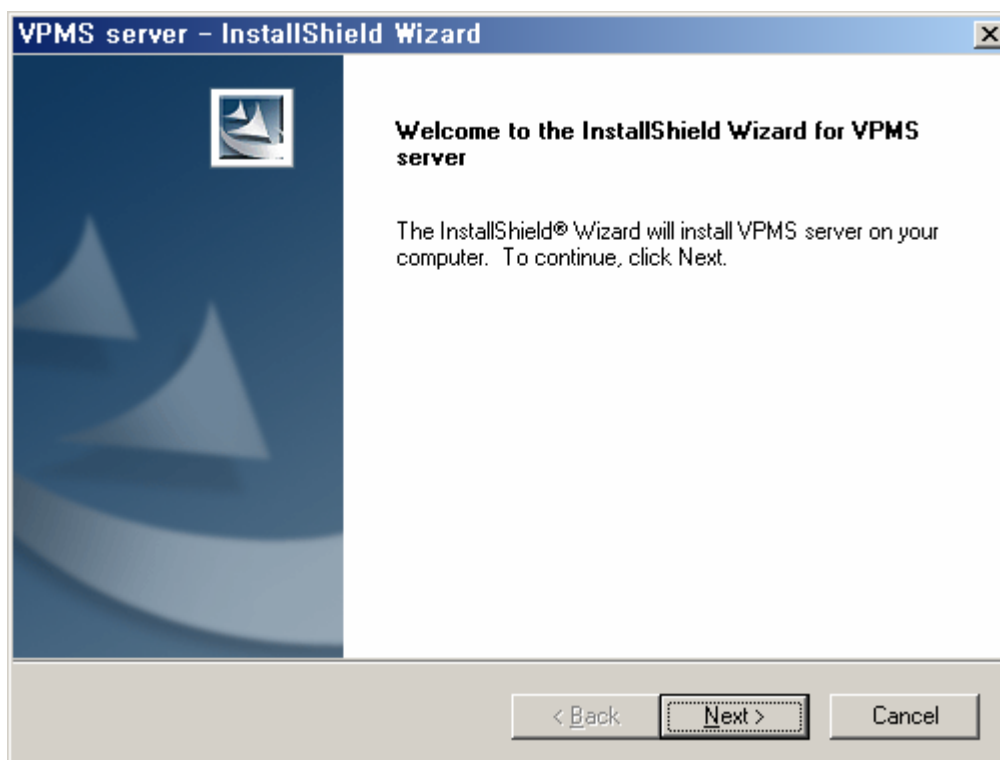
9) Click Finish tab and finish JRE installation.



2.2. VPMS Server Installation

Install VPMS Server on Server PC.

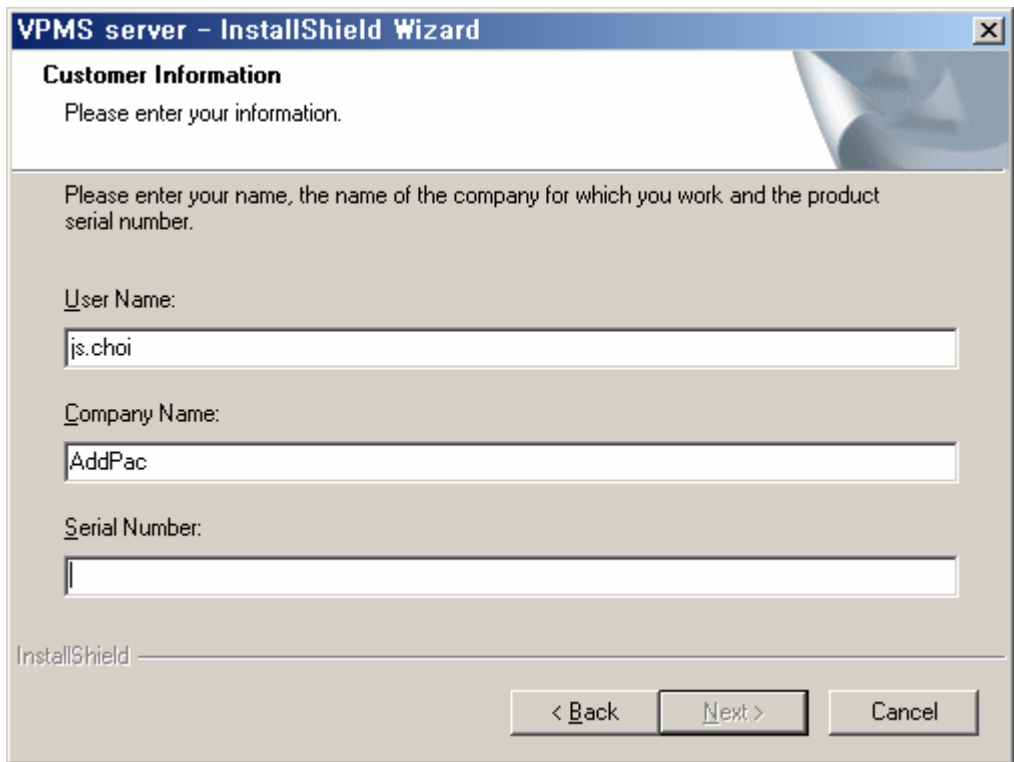
- 1) Execute VPMS Server installation file and click Next.



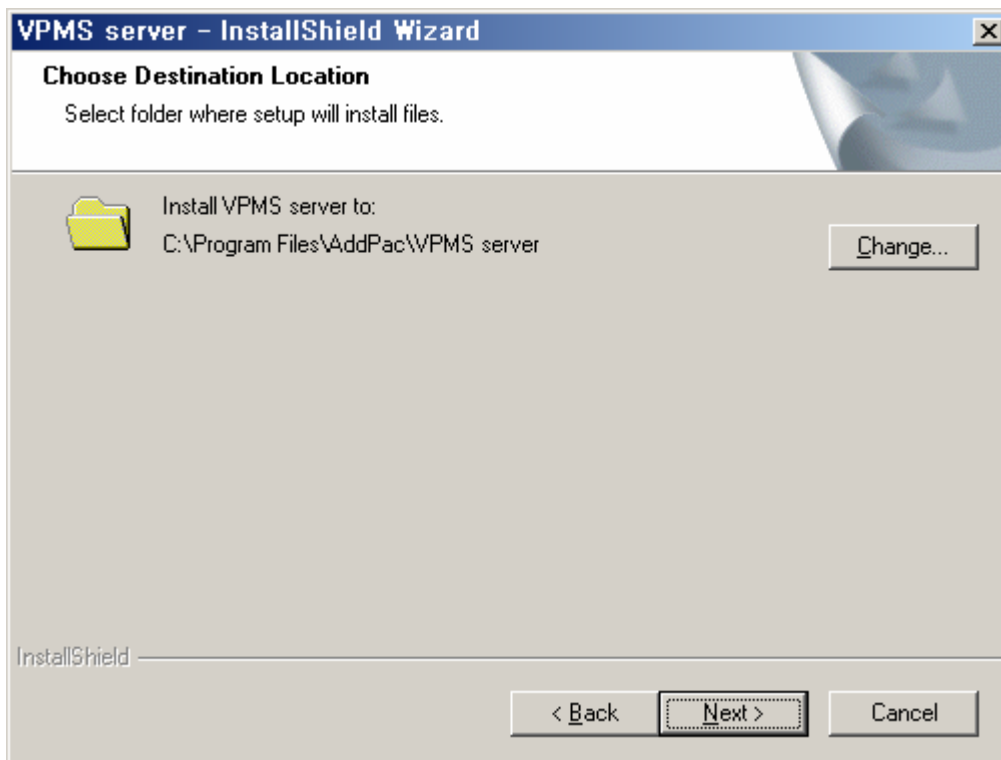
- 2) Select " I accept the terms in the license agreement" and click "next>" button.



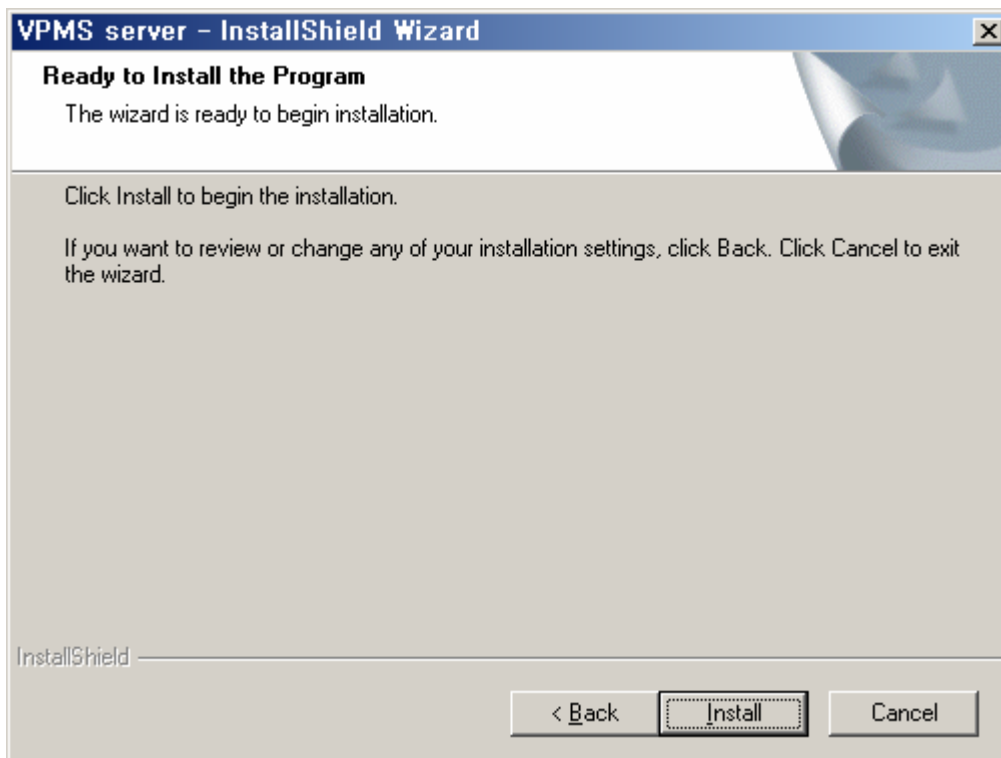
- 3) Enter User Name, Organization and Serial number. Then, click "Next>" button.



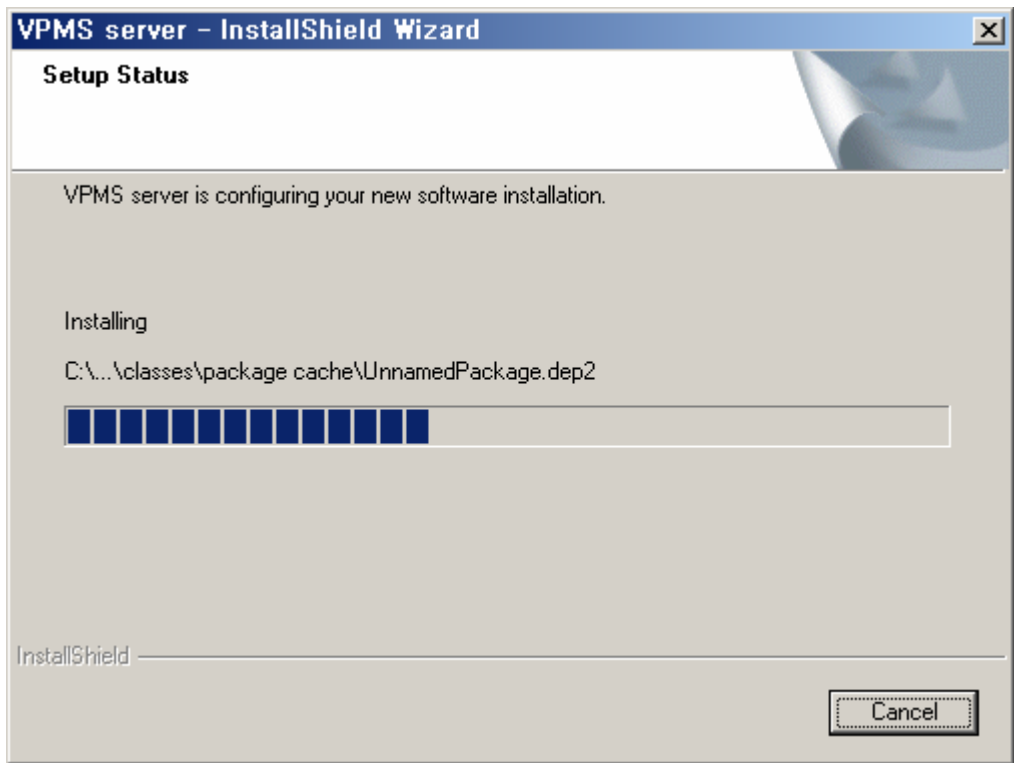
- 4) Select the path to install the program.



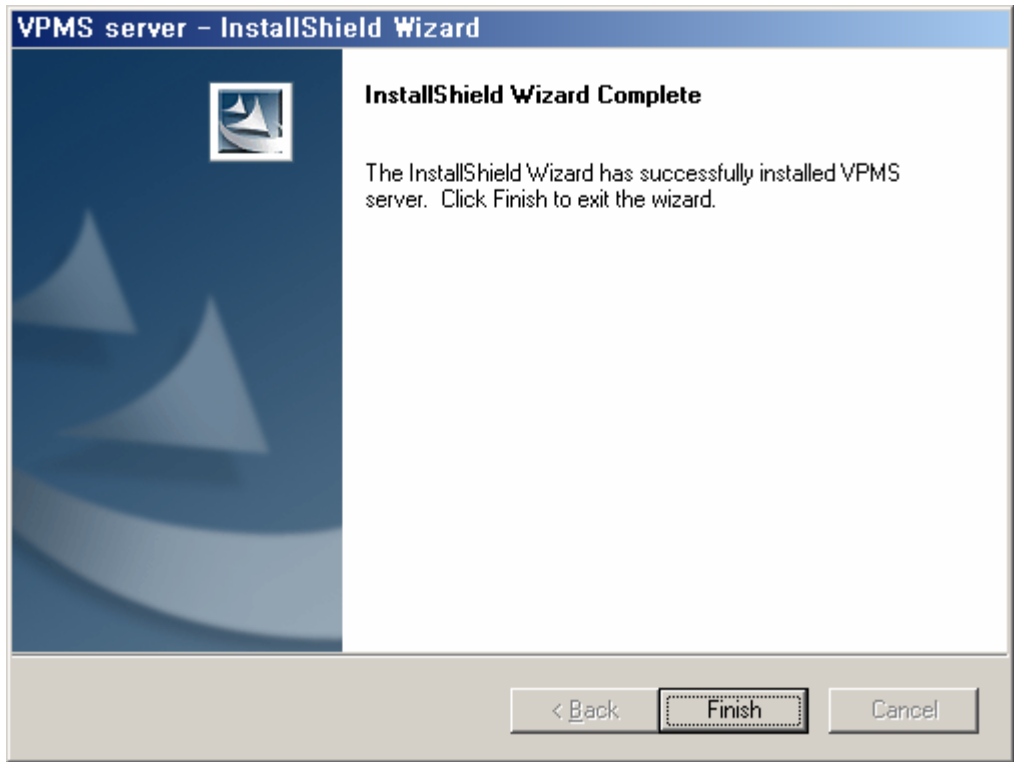
- 5) Click "Install" button.



6) Install the program.



7) Click "Finish" button to complete program installation.



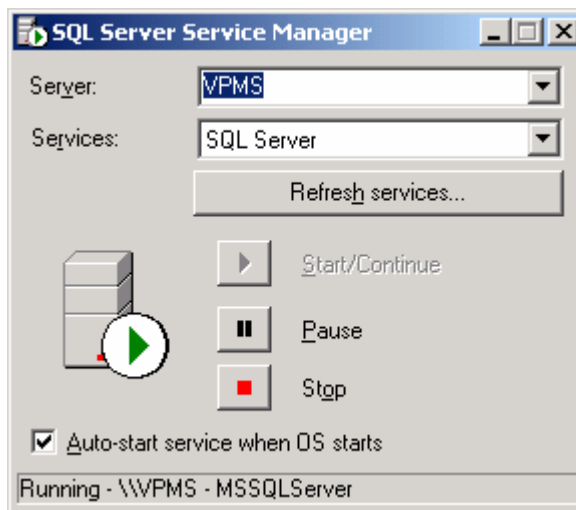
8) The program is registered under [Start]> [Programs]> [Addpac APMS]> [VPMS Server].

2.3. VPMS Database Configuration

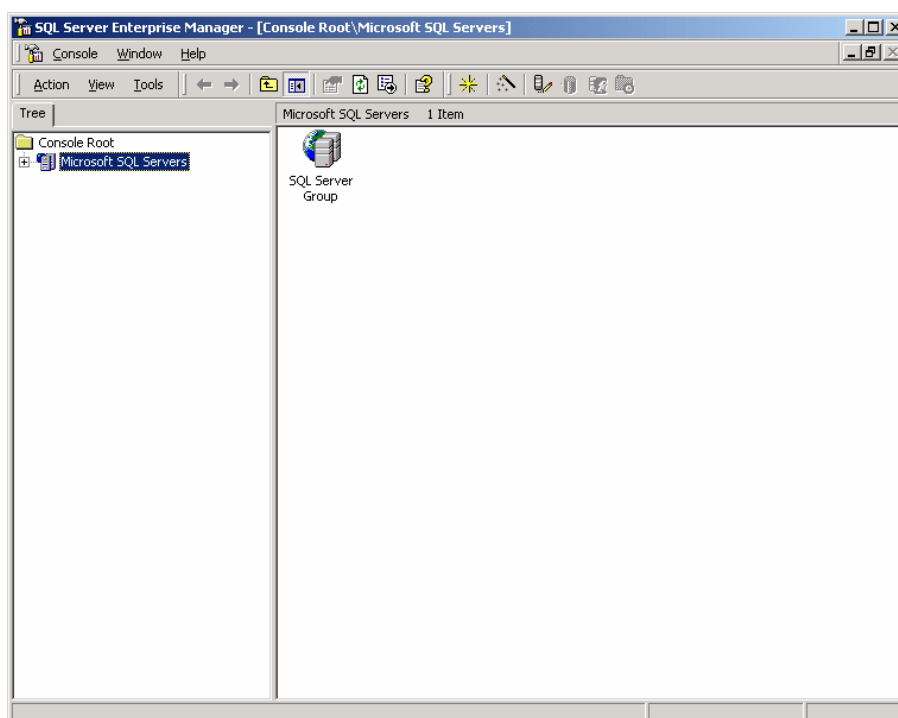
2.3.1. MSSQL Database Configuration

Database configuration is script execution process, which is setting the basic environment of MSSQL DB at VPMS Server.

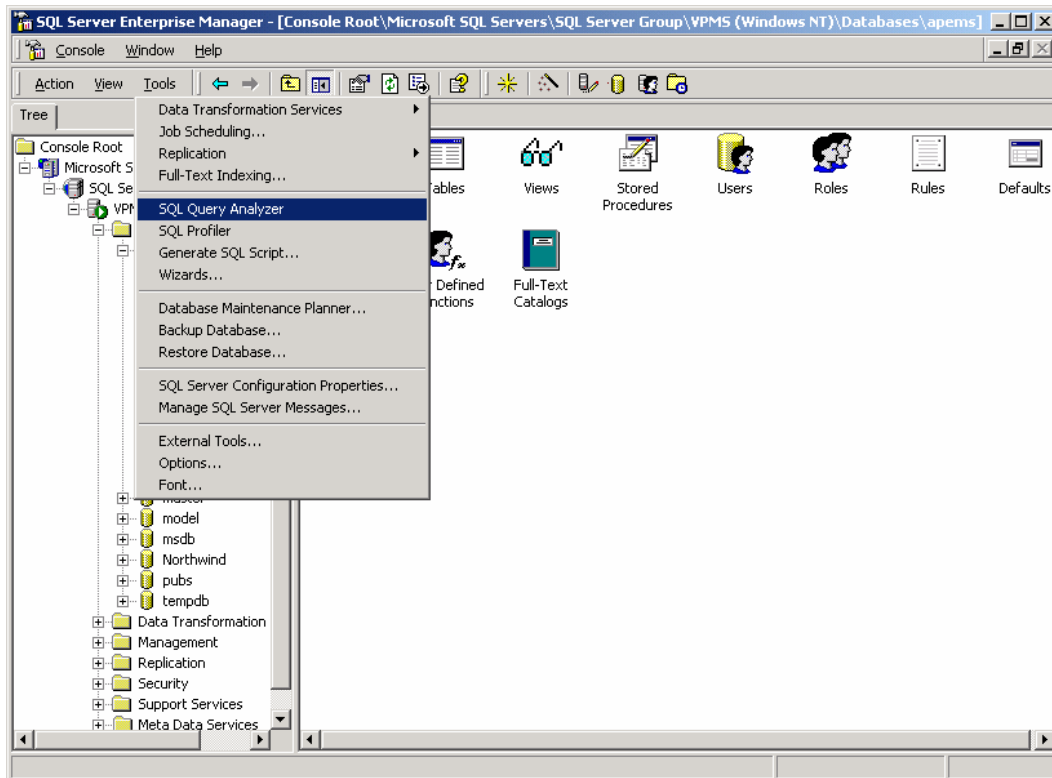
- 1) Select [Start]> [Programs]> [Microsoft SQL Server]> [Service Manager] from Windows.
- 2) Click “Start/Continue” button to start SQL service.



- 3) Select [Start]> [Programs]> [Microsoft SQL Server]> [Enterprise Manager], to creat Database and an account.

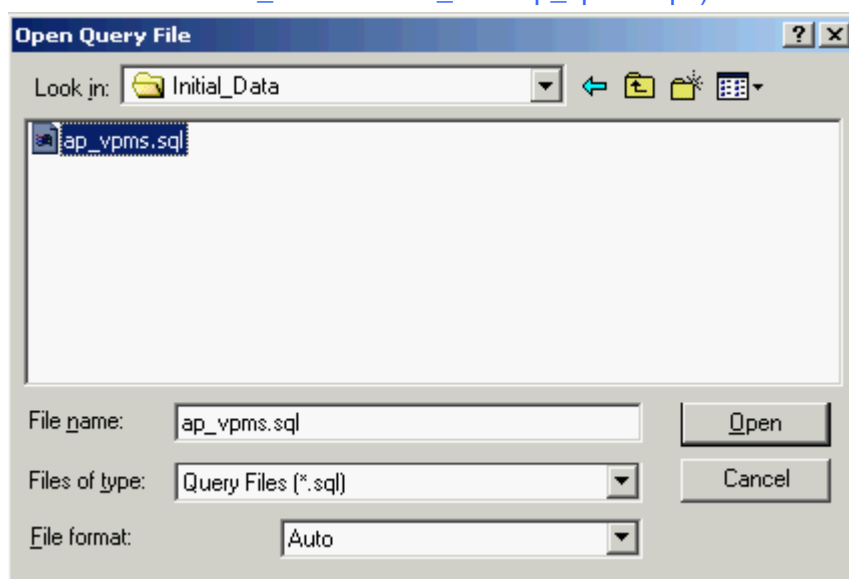


4) Select **Tools > SQL Query Analyzer** in Enterprise Manager Menu.

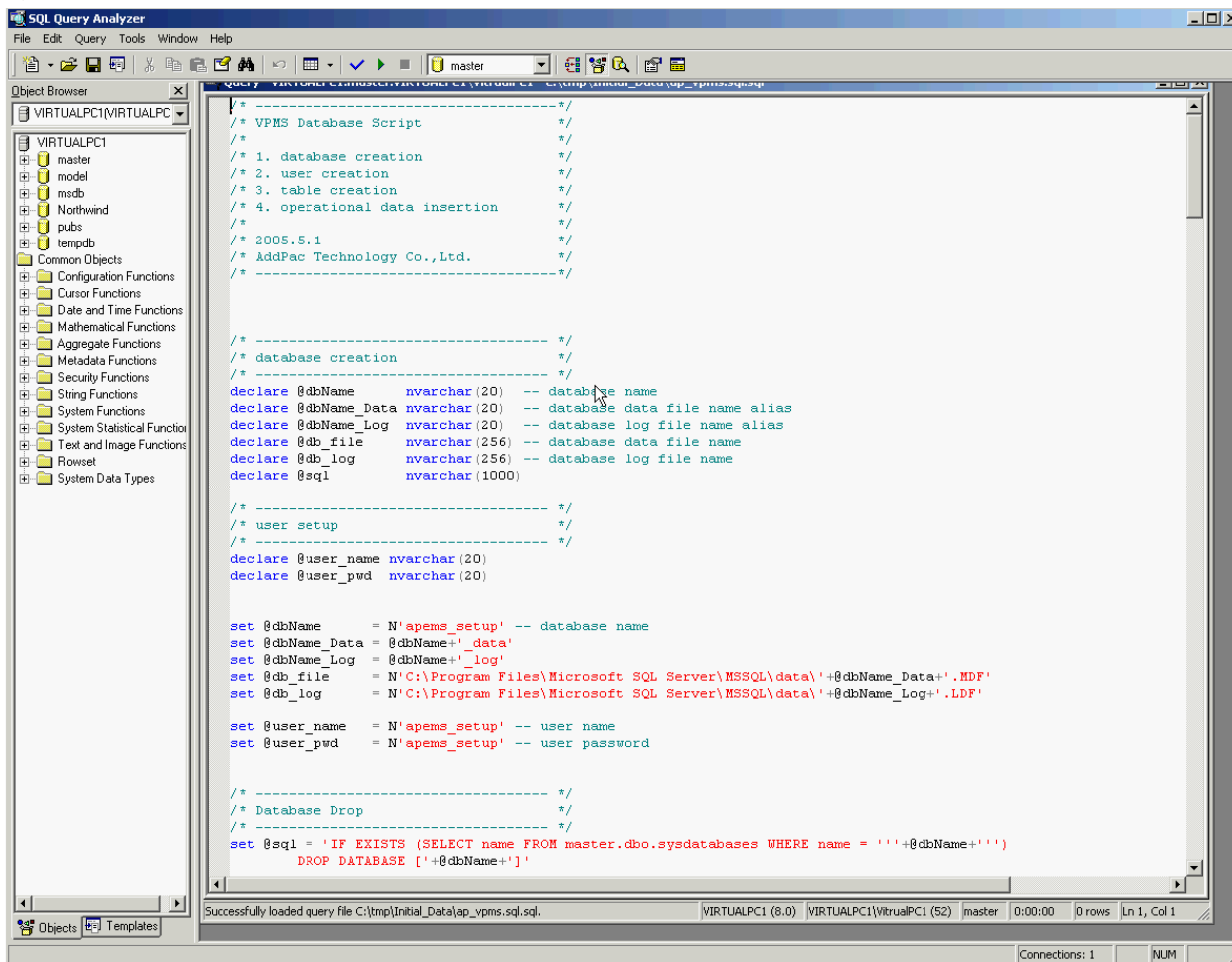


5) Select [File]> [Open] from SQL Query Analyzer menu or click “Load SQL Script” button to call ‘ap_vpms.sql’ script file

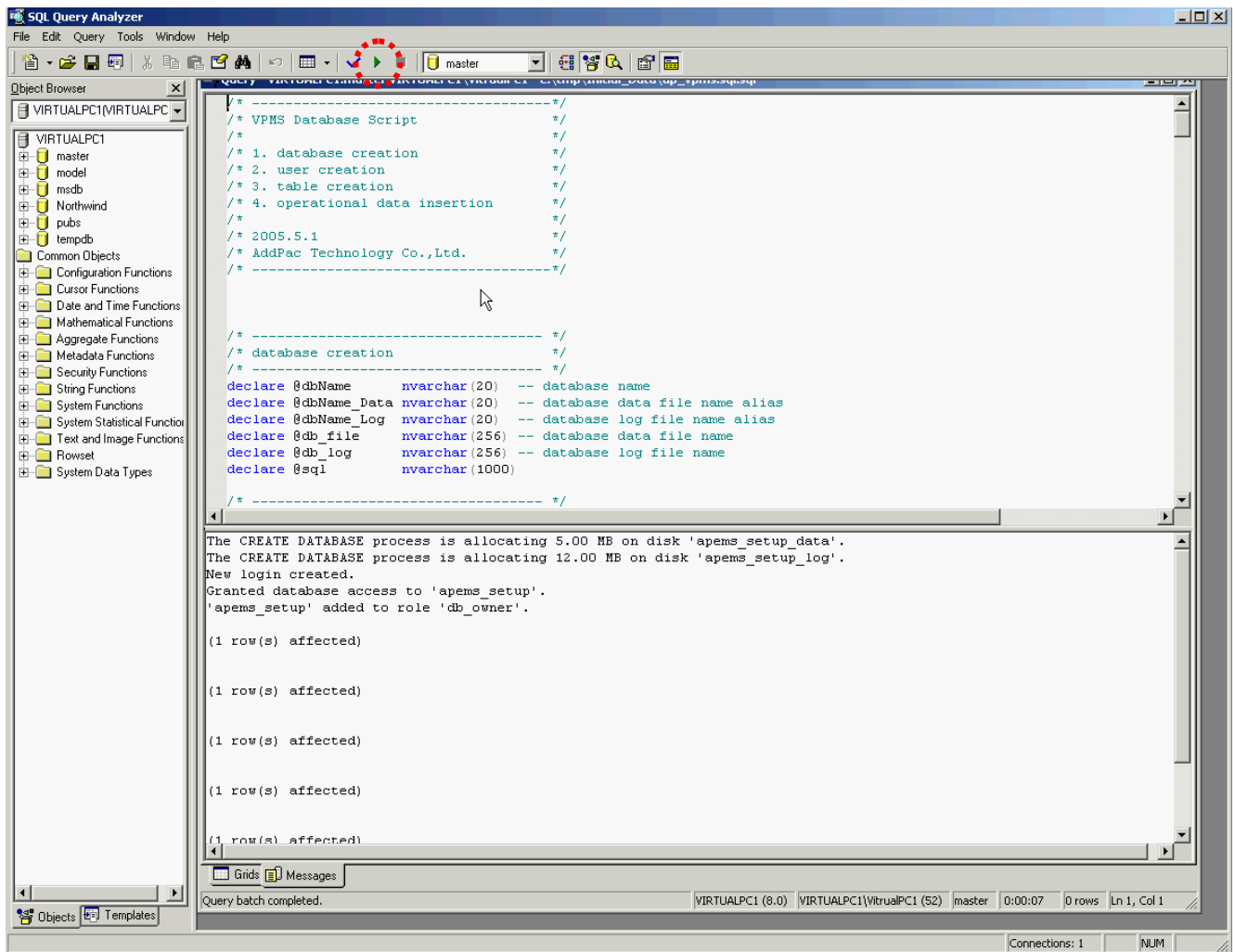
★ “ap_vpms.sql” is under same path where Server program is installed.
 (“c:\Program Files\AddPac\VPMS_Server\Initial_data\ap_vpms.sql”)



6) "ap_vpms.sql" is called.



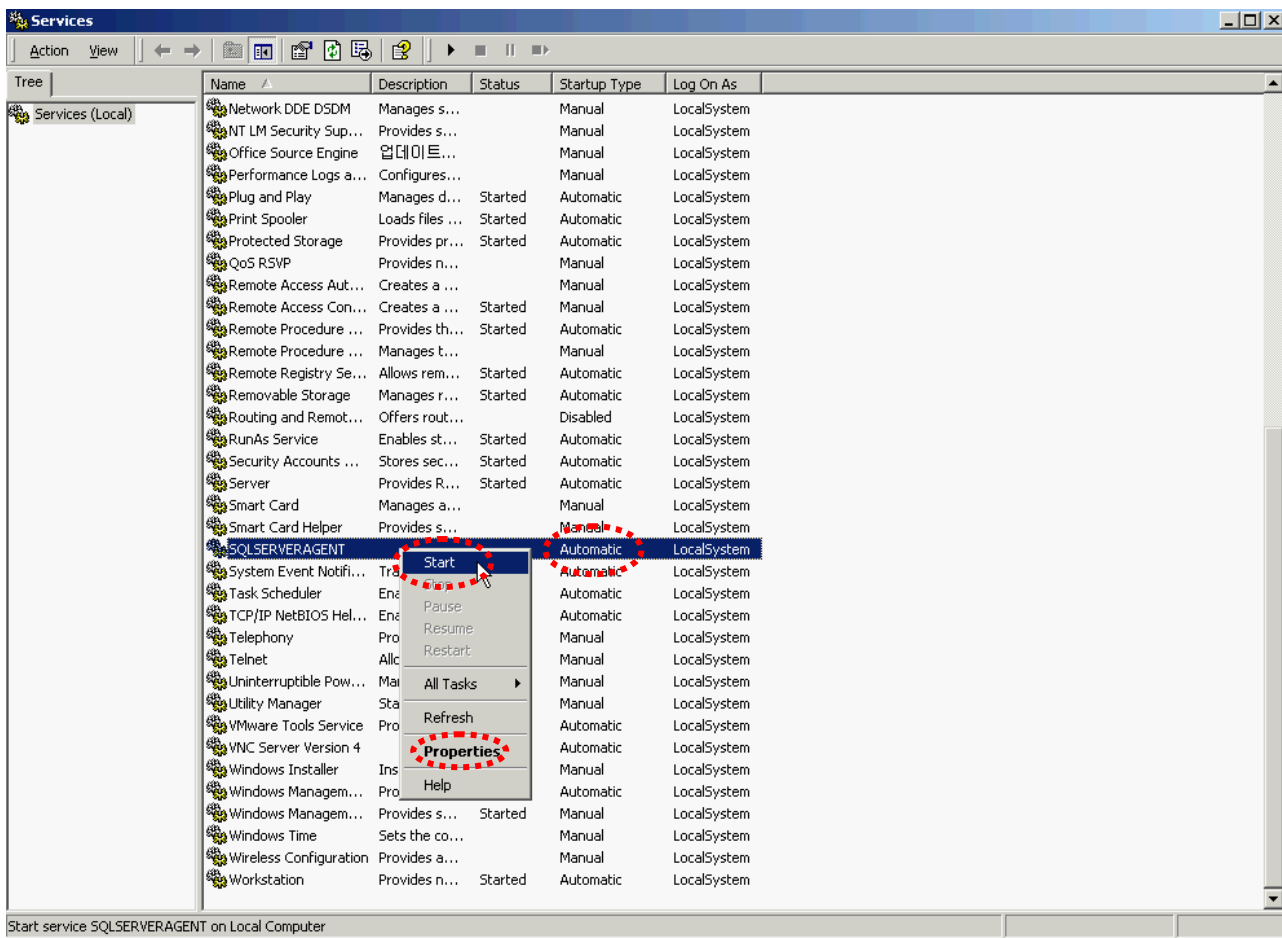
7) Click "Execute Query" or select [Query]> [Execute] from the menu to execute the script. Then the table and basic data is created.



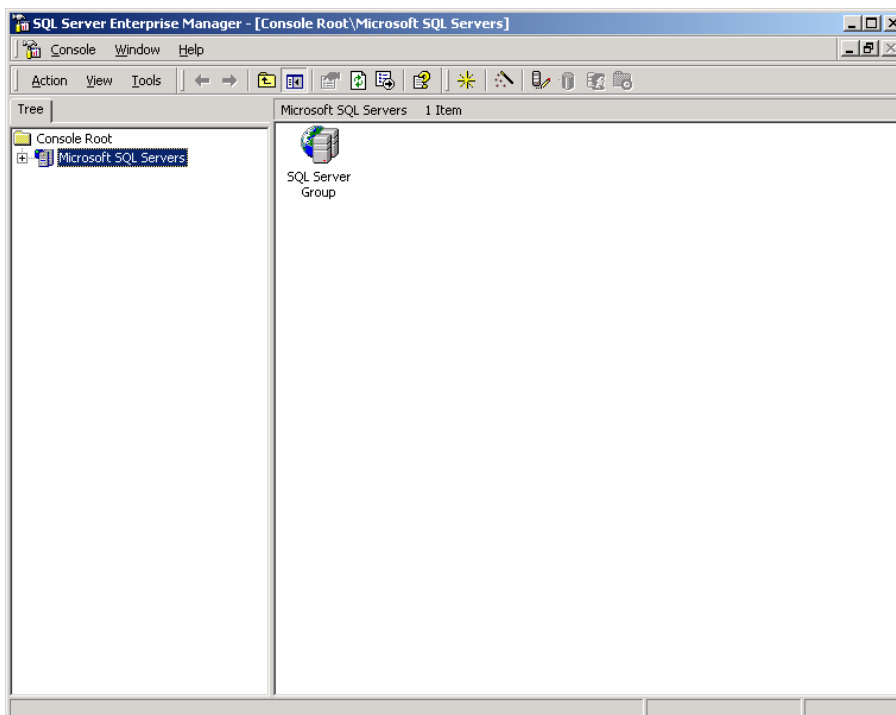
2.3.2. MSSQL Agent Configuration

Agent Configuration is needed to improve processing performance by deleting outdated data.

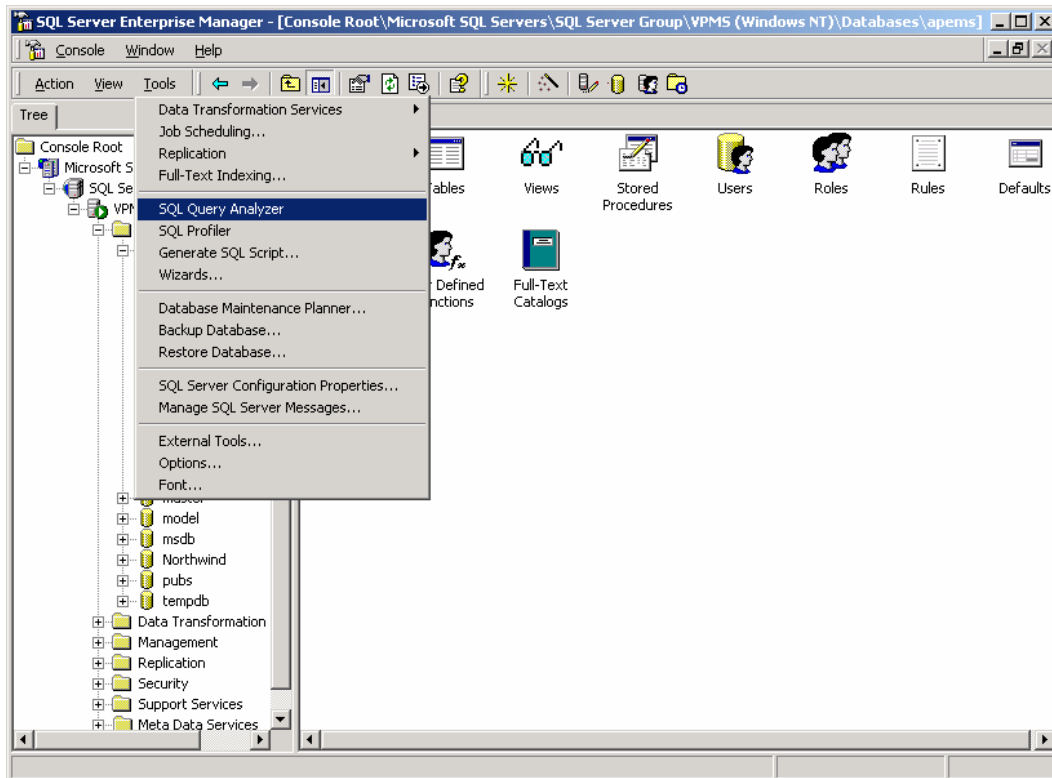
- 1) Execute Windows Start>Setting>Control Panels>Administrative Tools->Services.
- 2) Run SQLSERVERAGENT.
- 3) Set Automatic as Startup Type in Properties and Start.



4) Run Start>Programs>Microsoft SQL Server>Enterprise Manager to register Agent detail.



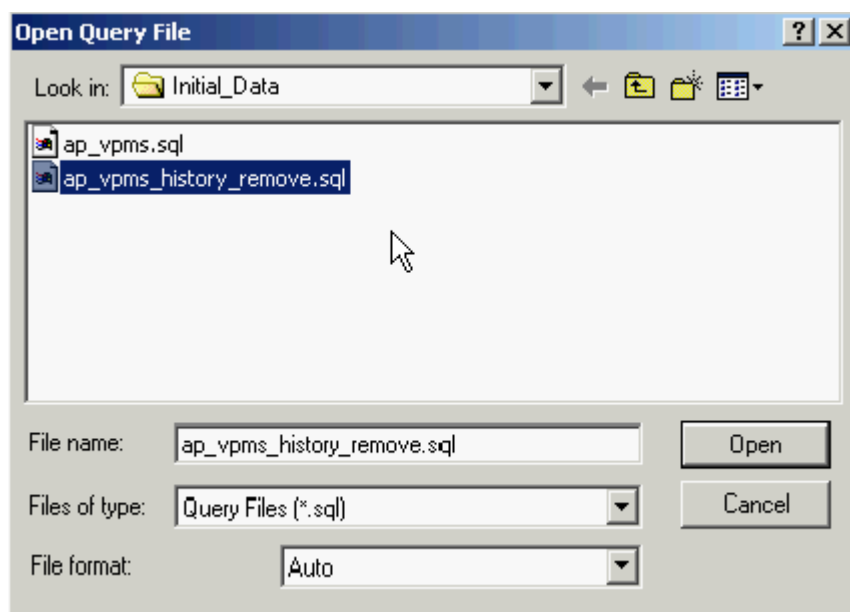
5) Choose **Tools > SQL Query Analyzer** in Enterprise Manager Menu.



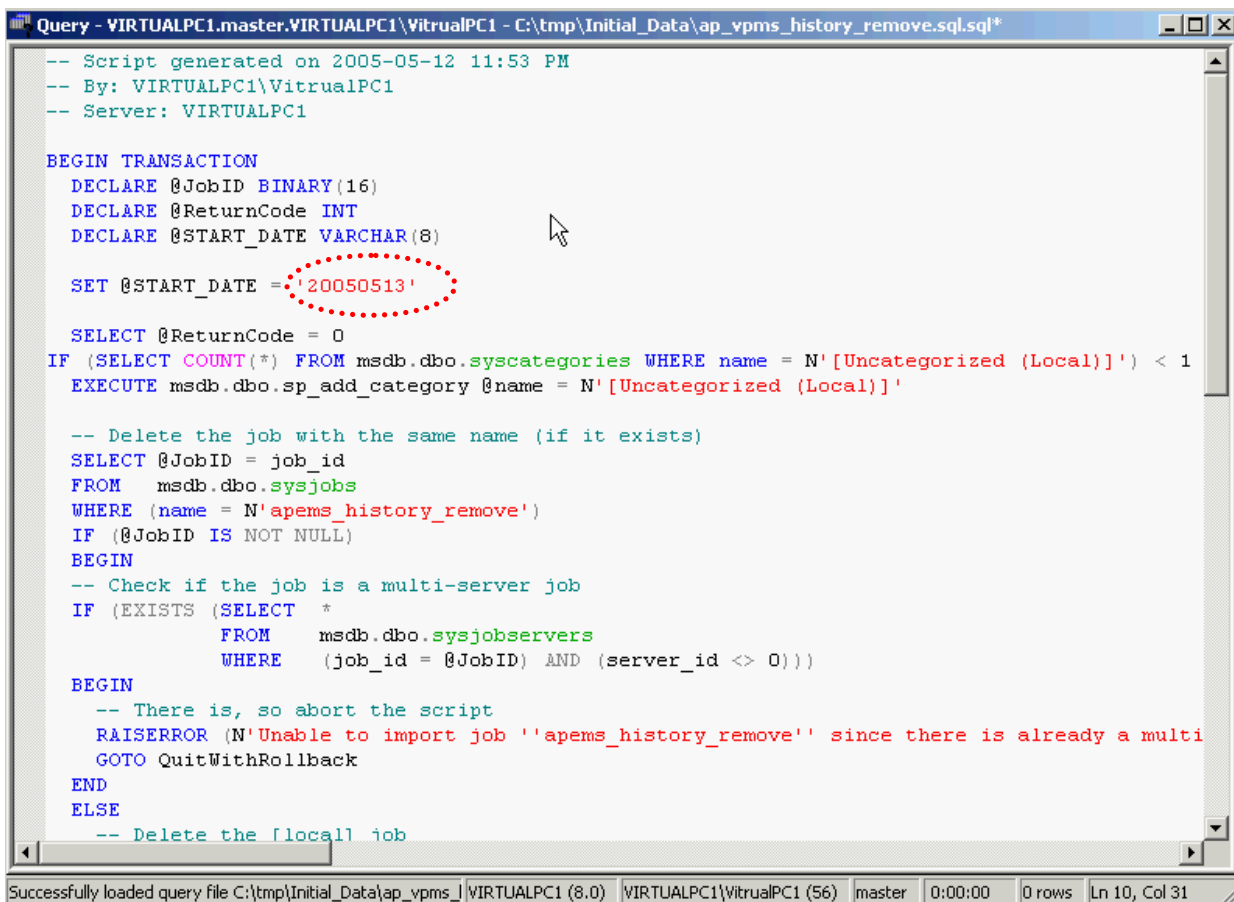
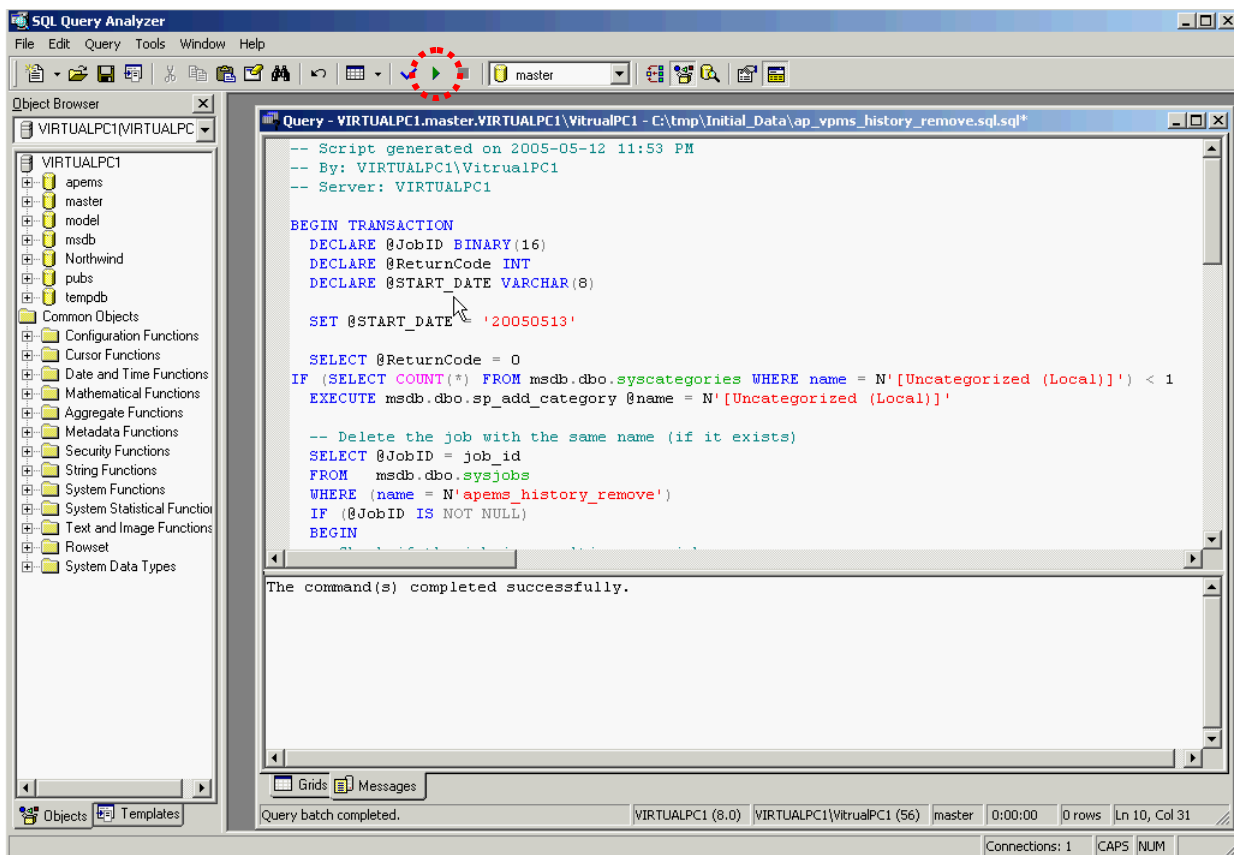
6) Choose File>Open in SQL Query Analyzer menu or Click Load SQL Script tab to open 'ap_vpms_history_remove' script file

★ **ap_vpms.sql** file is under same path where Server program is installed.

("c:\Program Files\AddPac\VPMS_Server\Initial_data\ap_vpms_history_remove.sql")

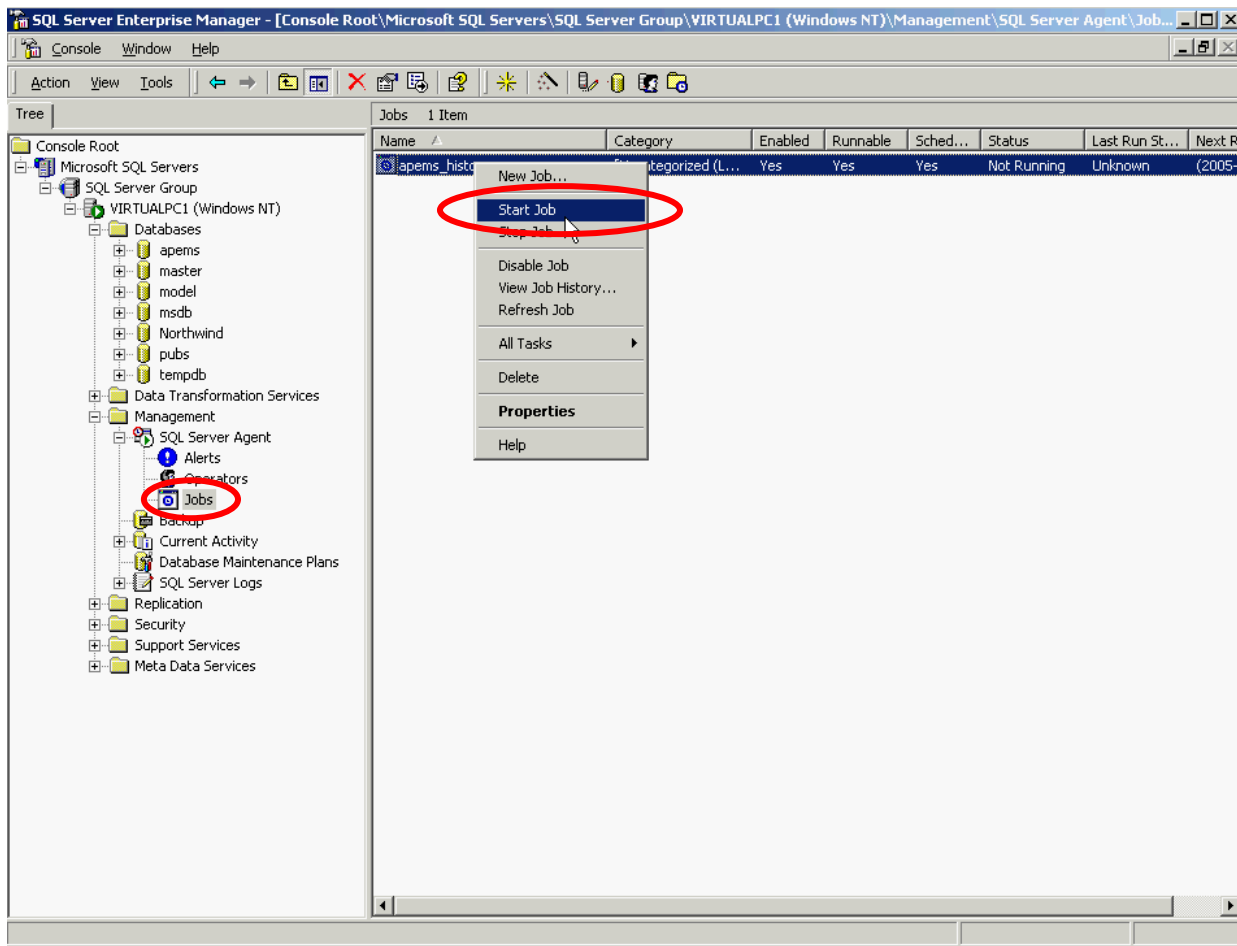


7) Choose ap_vpms_history_remove.sql and open.



8) Set value for operation starting date (@START_DATE) ex: 20050513) and Click Execute Query or Choose Query>Execute to run the script for appending new Agent operation.

9) User can check the appended Agent operation in Enterprise Manager->Management->SQL Server Agent -> Jobs and Start Operation.



2.4. Server Database Configuring

1) Environment setting file (“db.properties”)

- “c:\Program files\Addpac\VPMS Server\db.properties”

2) Environment setting

- Information such as Driver, IP address & port, log-in account is registered in the environment setting file.
- Following example is for MSSQL setting. Highlighted part can be modified and database server IP address can be registered.

```
drivers=com.inet.pool.PoolDriver  
  
logfile=/dbPool.log  
  
mydb.url=jdbc:inetpool:inetdae7:172.16.31.2:1433?database=apems  
mydb.maxconn=50  
mydb.user=apems  
mydb.password=apems
```

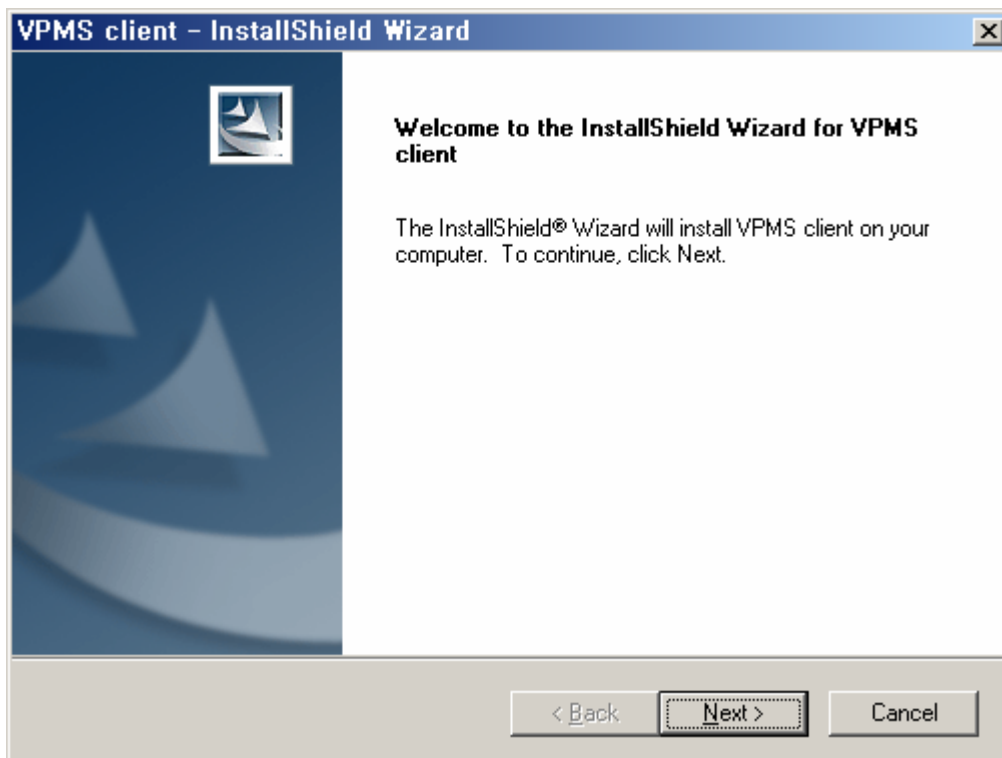
[Config] MSSQL “db.properties” file setting

3. VPMS Client

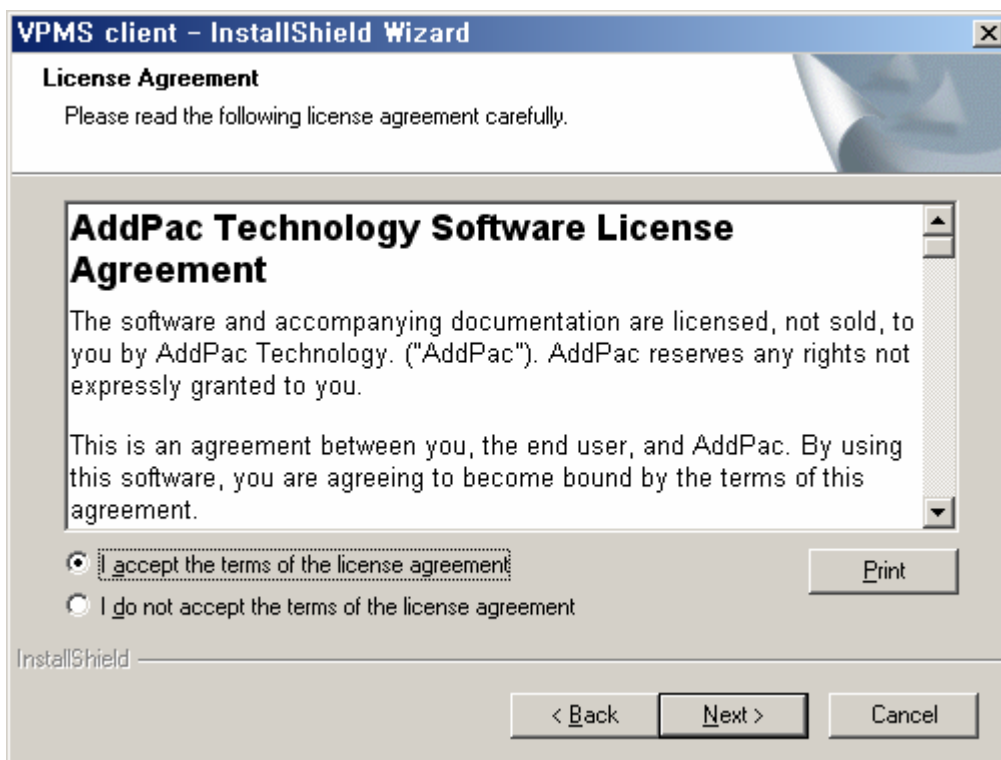
3.1. VPMS Client Installation

VPMS Client is installed at Client PC and it can be installed at more than one PC.

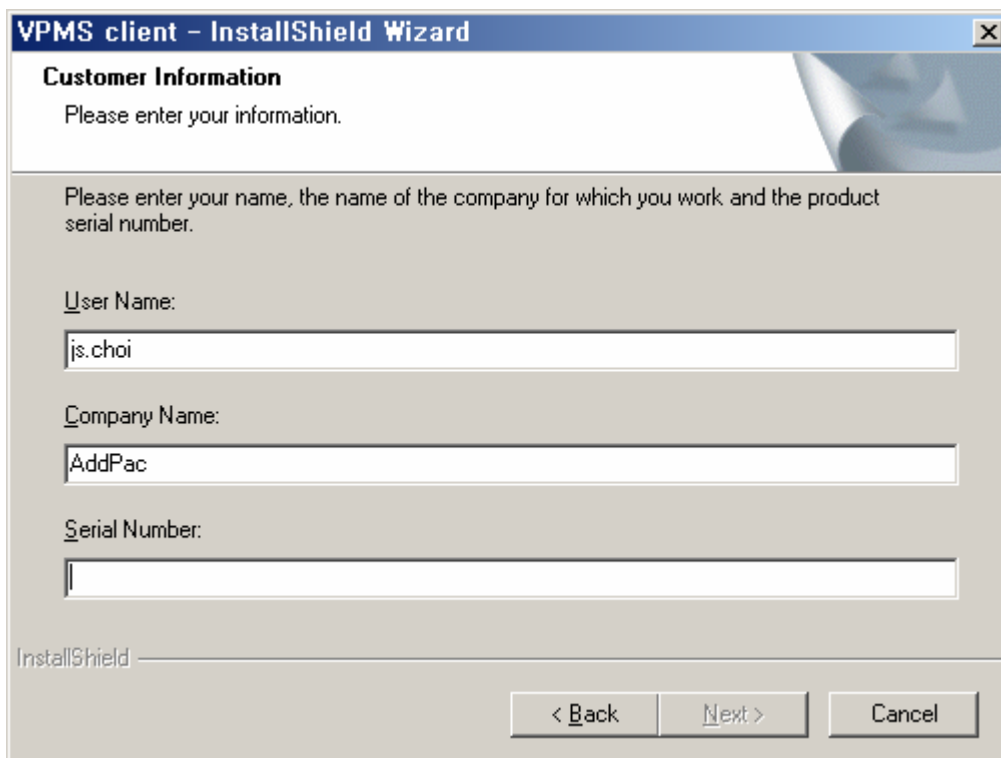
- 1) Run VPMS client installation file and click Next.



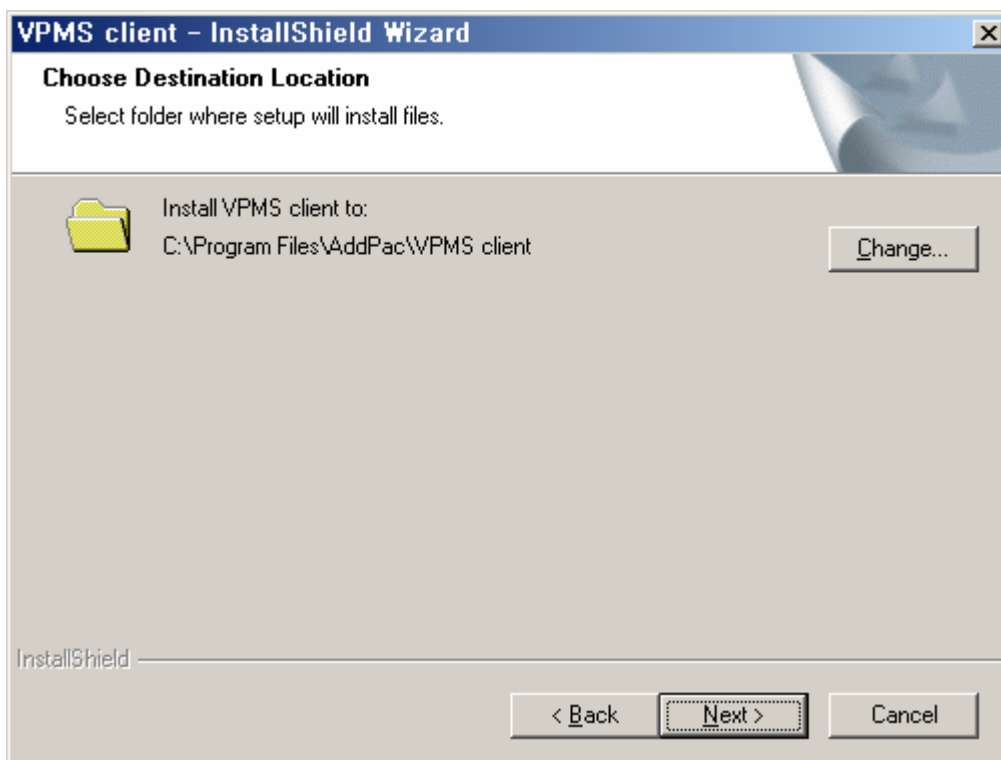
- 2) Select "I accept the terms in the license agreement" and click "Next>" button.



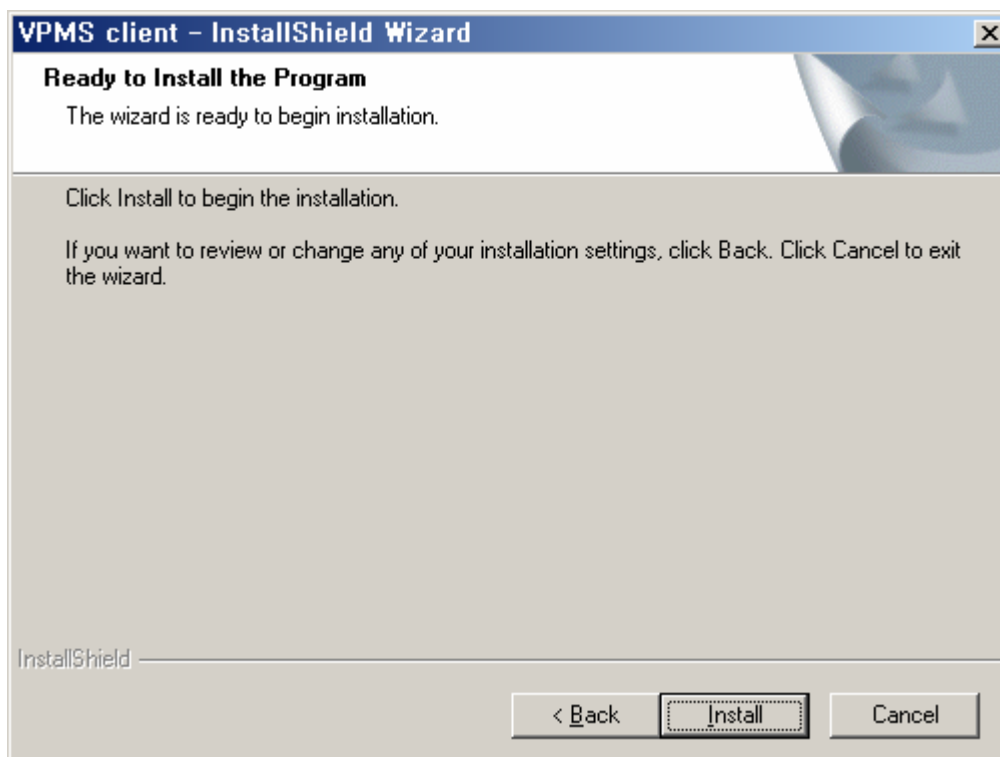
- 3) Enter "User Name", "Organization" and assigned "Serial Number". Click "Next>" button.



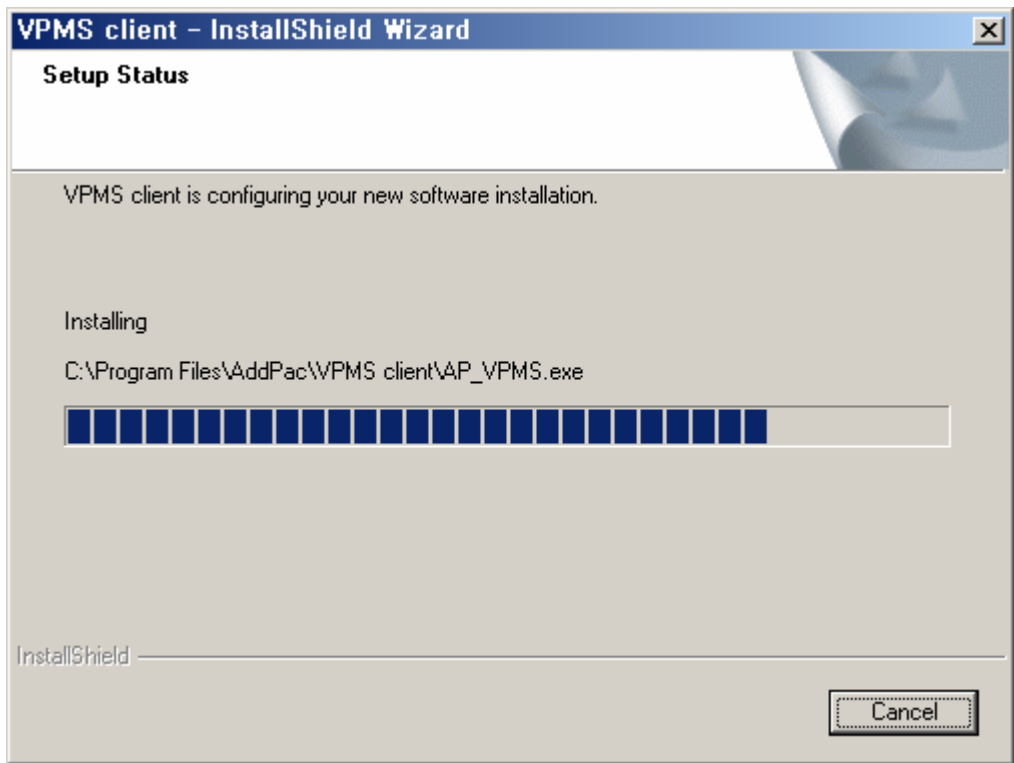
- 4) Select folder where setup will install files.



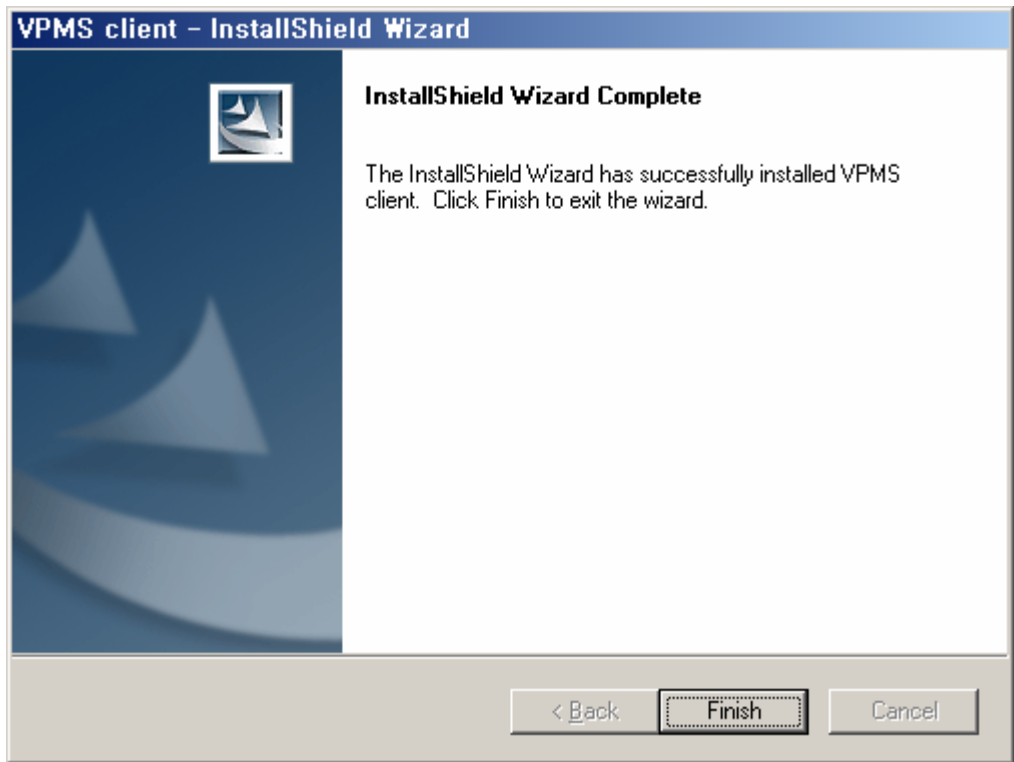
- 5) Click Install to begin the installation.



- 6) Install VPMS client.



- 7) Click "Finish" button to complete installation.



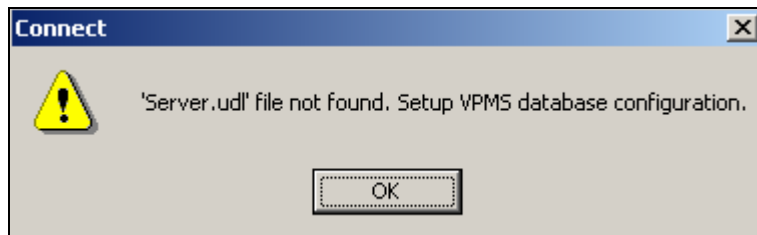
- 8) The program is registered at [Start]> [Programs]> [Addpac APMS]> [VPMS Client].

3.2. Client Database Setting

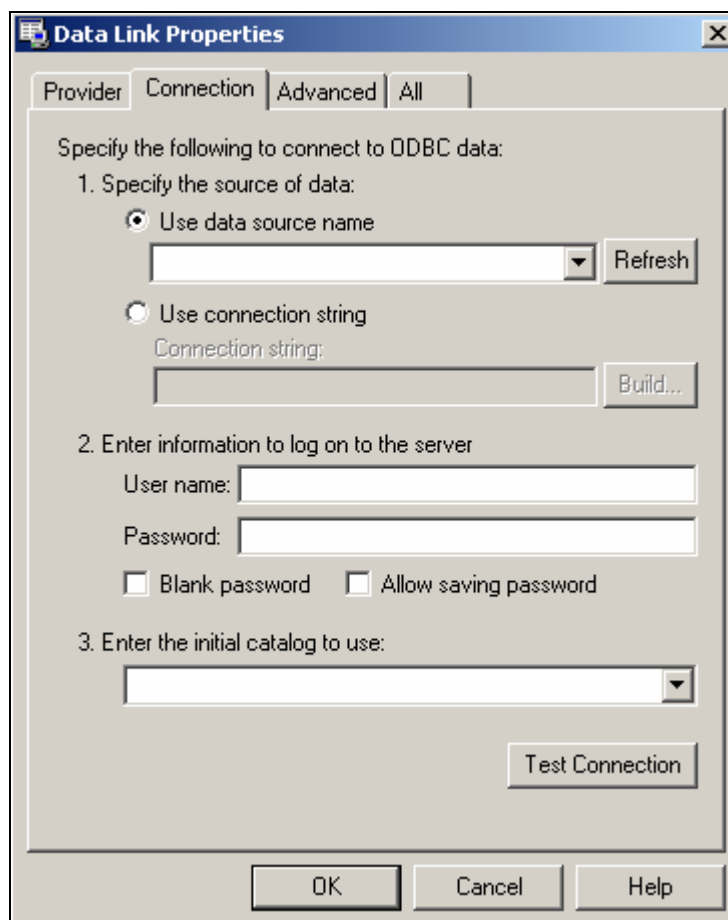
- 1) When you run Client program in the first time Client, database setting window will come up automatically. You can configure the setting by running "server.udl" in the program derectory.



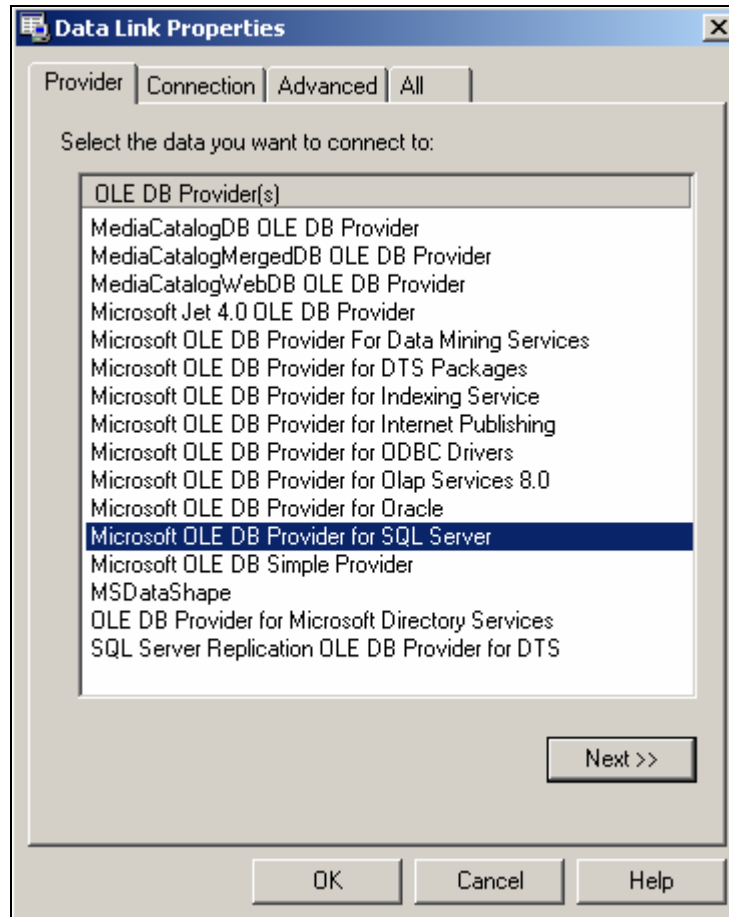
- 2) With firsttime VPMS client running, Server.udl not found window pops up, click OK to proceed.



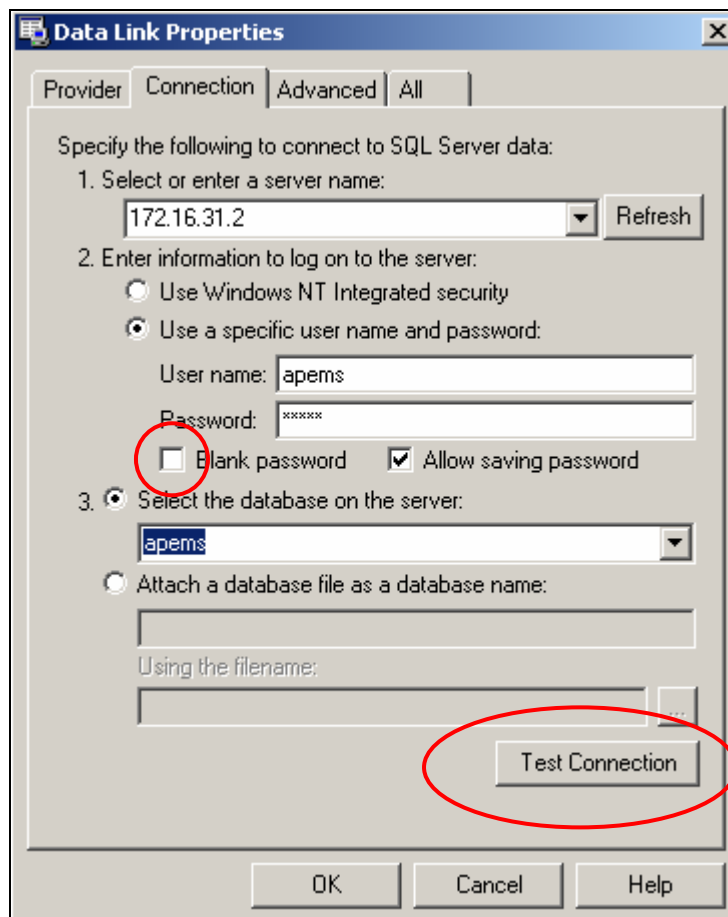
3) Setting for connection to database can be configured in Data Link Properties window.



- 4) Select Provider tab and choose SQL server for data provider and click Next button.



- 5) Enter Server name or Server IP address. Set **User name(apems)**, **Password(apems)** and choose **Database(apems)**. When the setting is completed, proceed Testconnection to confirm if setting is applied alright.

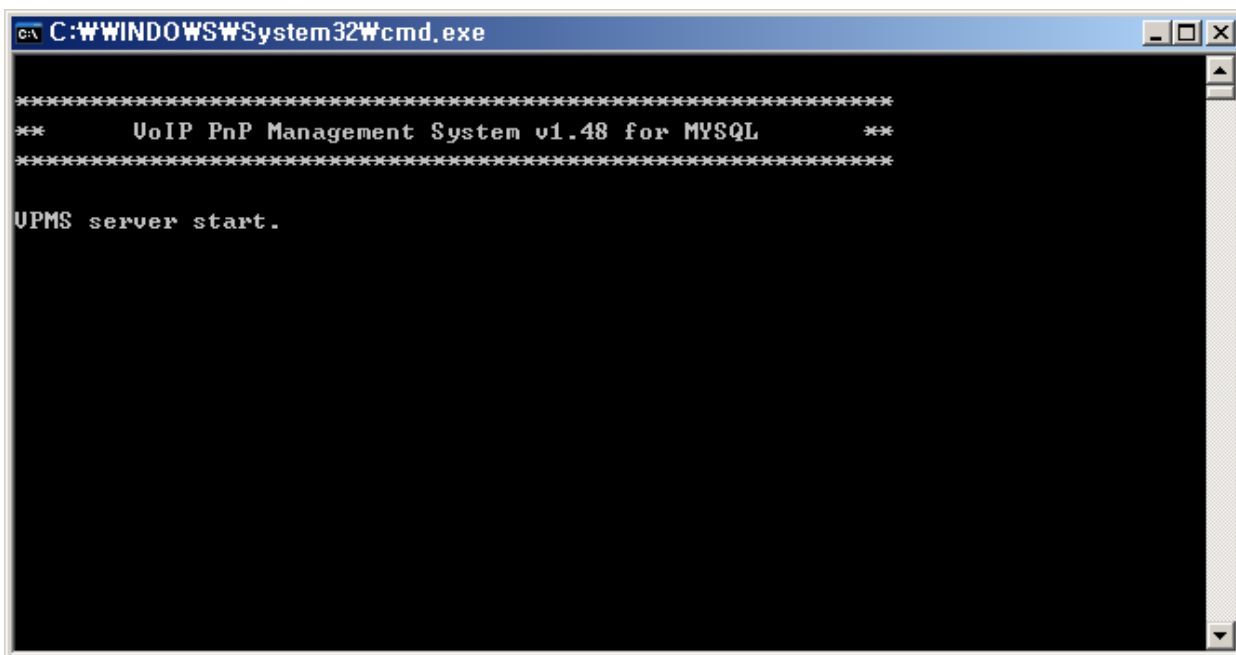


- 6) Click Test Connection to confirm if MSSQL DB setting has no problems.
- 7) Click OK to save the setting and run vpms client again.

4. VPMS Program Running

4.1. Server Program Execution

- 1) Select [Start]> [Programs]> [AddPac]> [VPMS Server]> [VPMS_Server].
- 2) Program is executed.



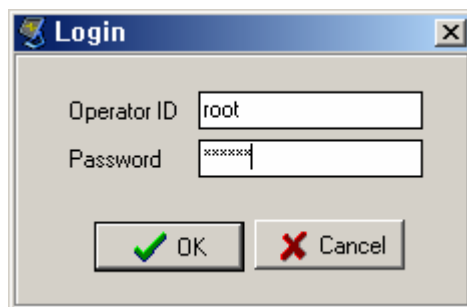
4.2. Client Program Execution

- 1) Select [Start]> [Programs]> [AddPac]> [VPMS Client]> [VoIP PnP Management System 1.00"].

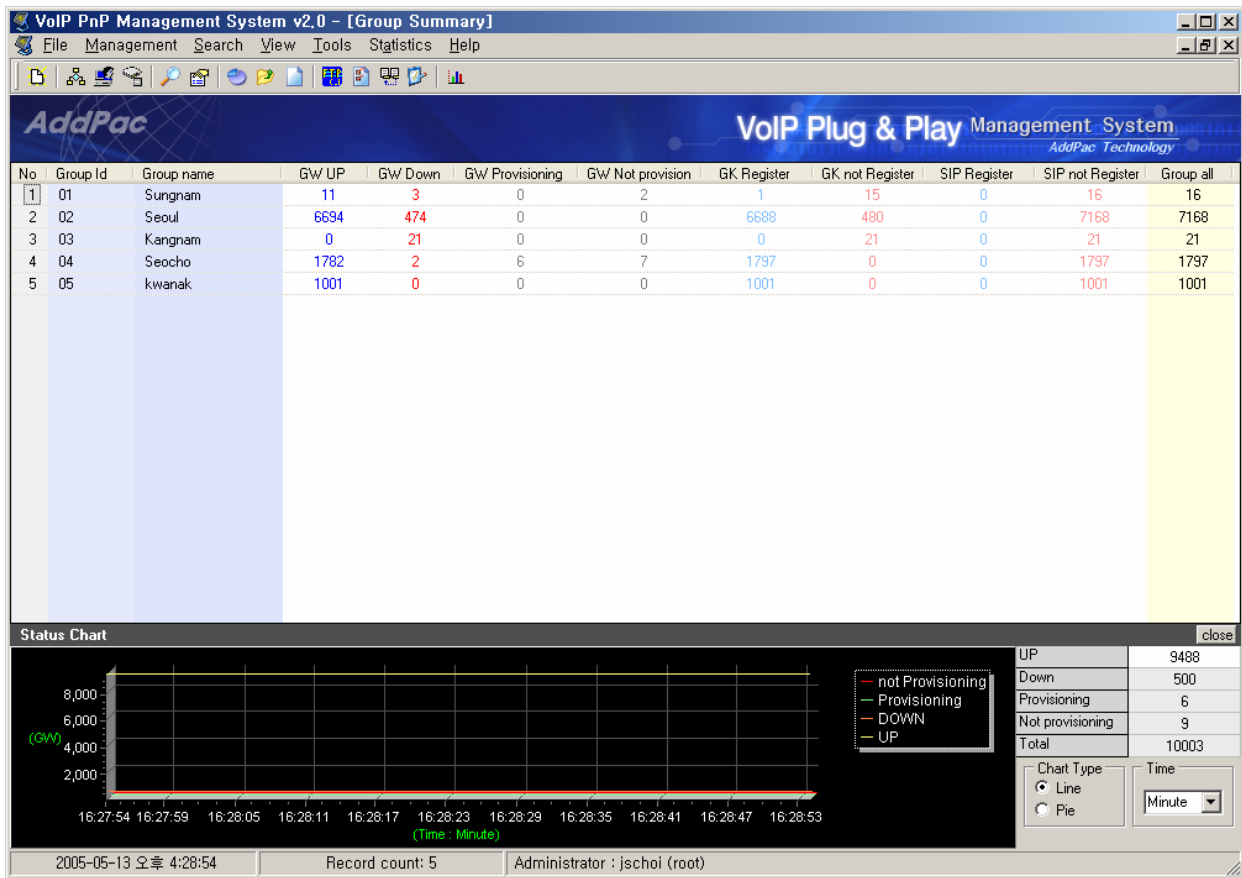


- 2) The Login dialog box of VPMS program is appears. The default login information is (Operator id : root, password : router).

(The login information can be added, deleted and modified at the program. So change the default Operator ID.)



3) After the login process, the below VPMS Client main page is displayed.

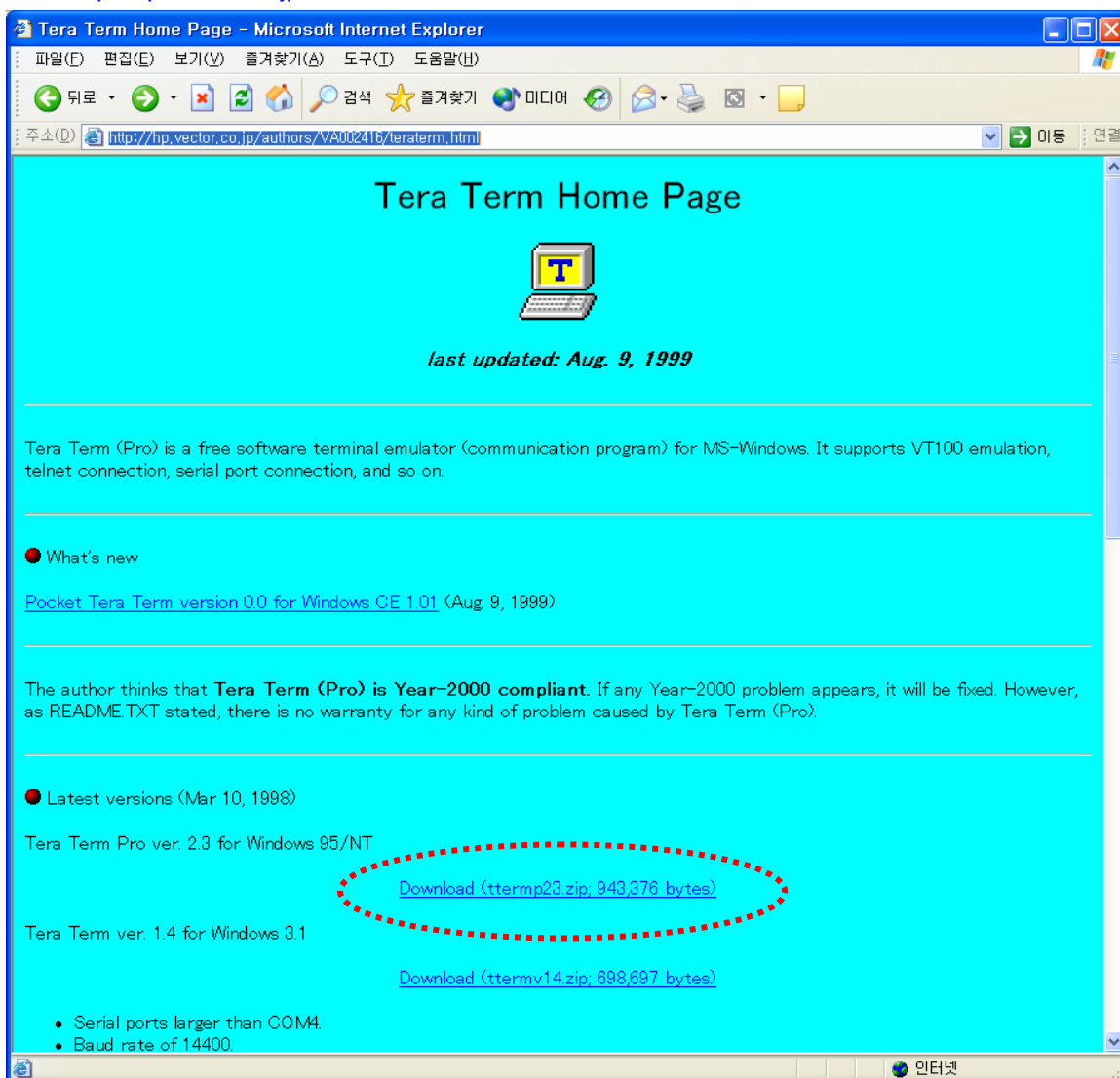


4.3. Tera Term Installation

Tera Term is needed for gateway debugging.

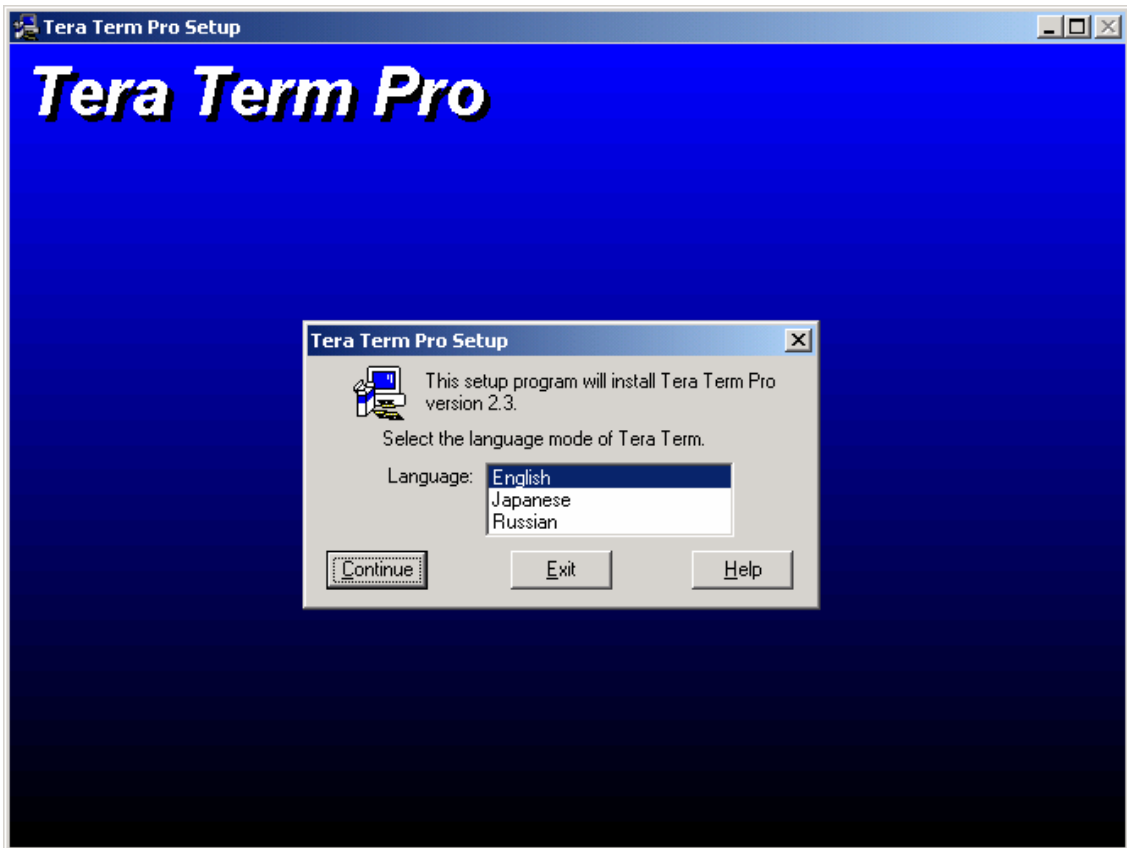
If Tera Term is not installed, you won't use VPMS Telnet functions.

- 1) Teraterm program can be downloaded from
<http://hp.vector.co.jp/authors/VA002416/teraterm.html> .

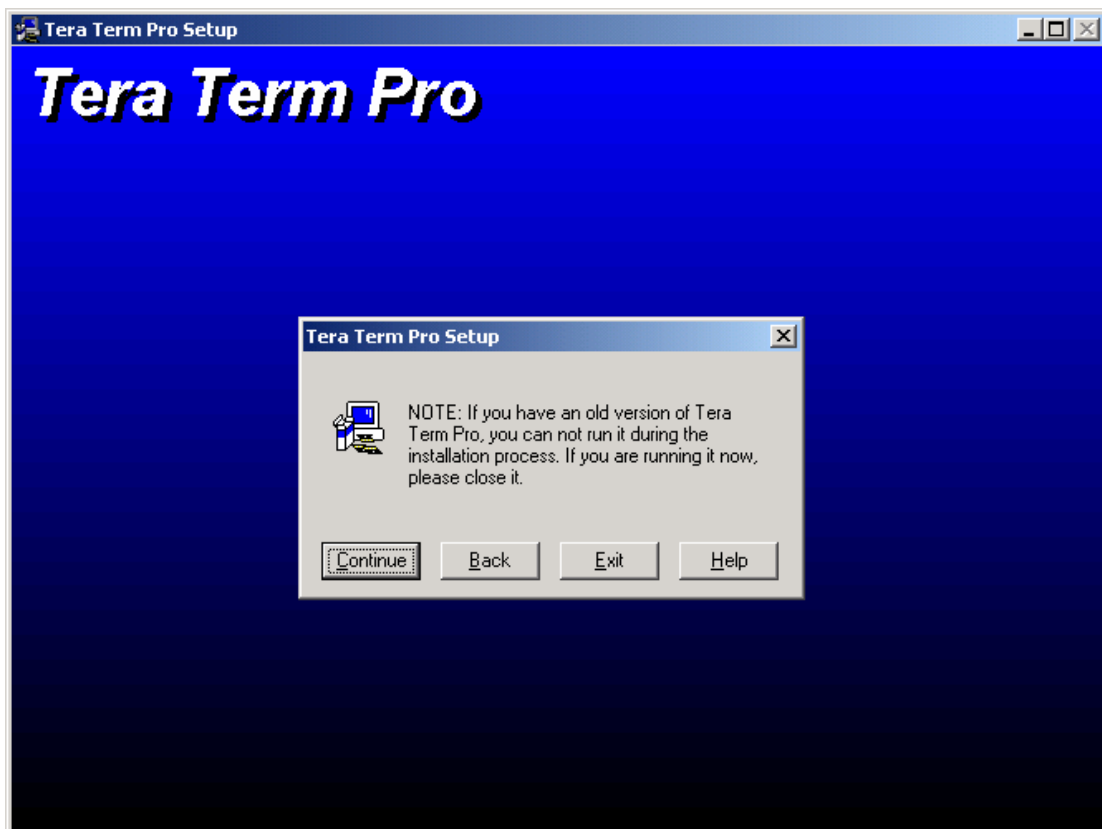


- 2) After downloading Teraterm, unzip "ttermv23.zip".
- 3) Run Setup.exe.

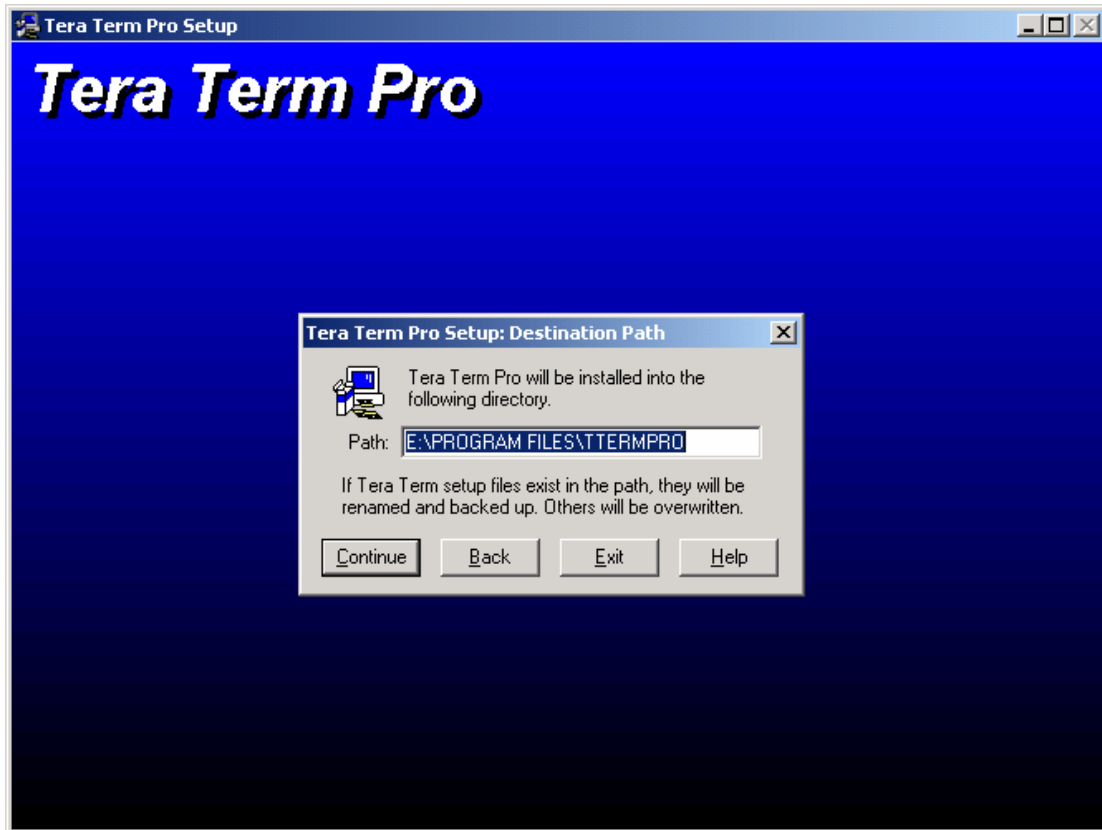
- 4) Choose English.



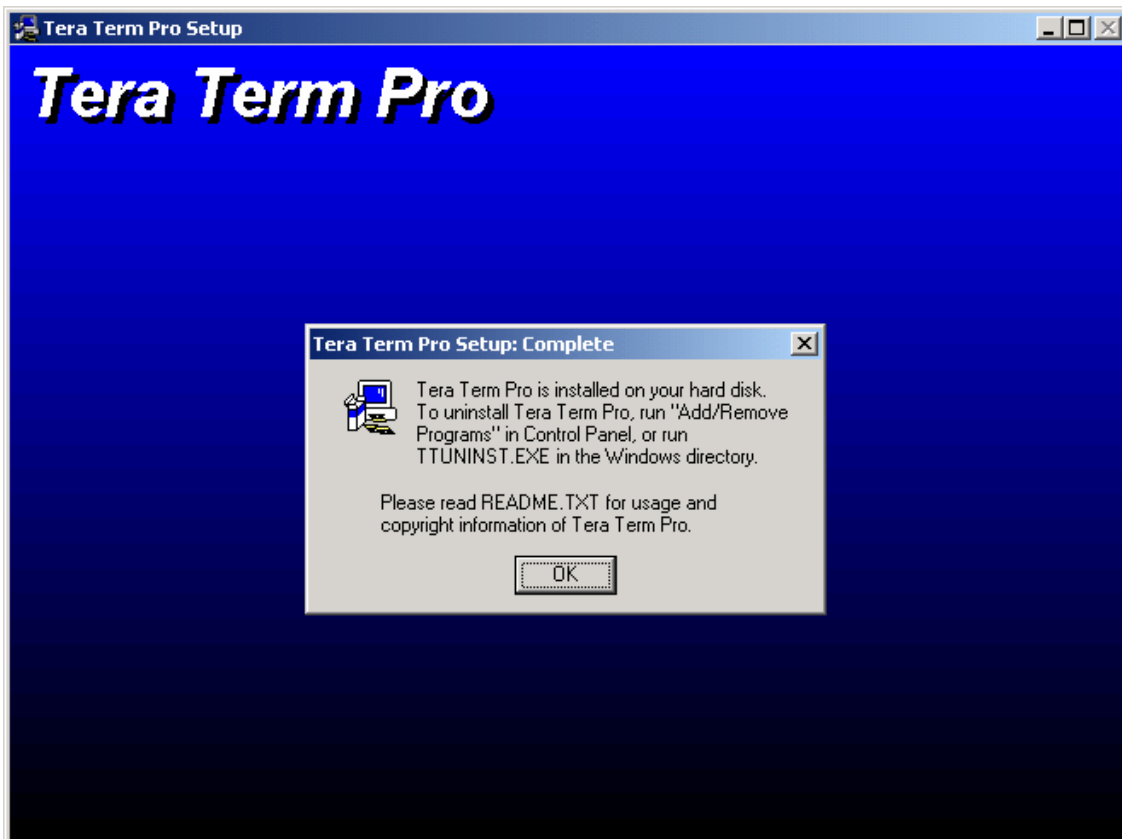
- 5) Select Continue.



- 6) Select the path where TeraTerm will be installed.



- 7) TeraTerm Installation is completed.

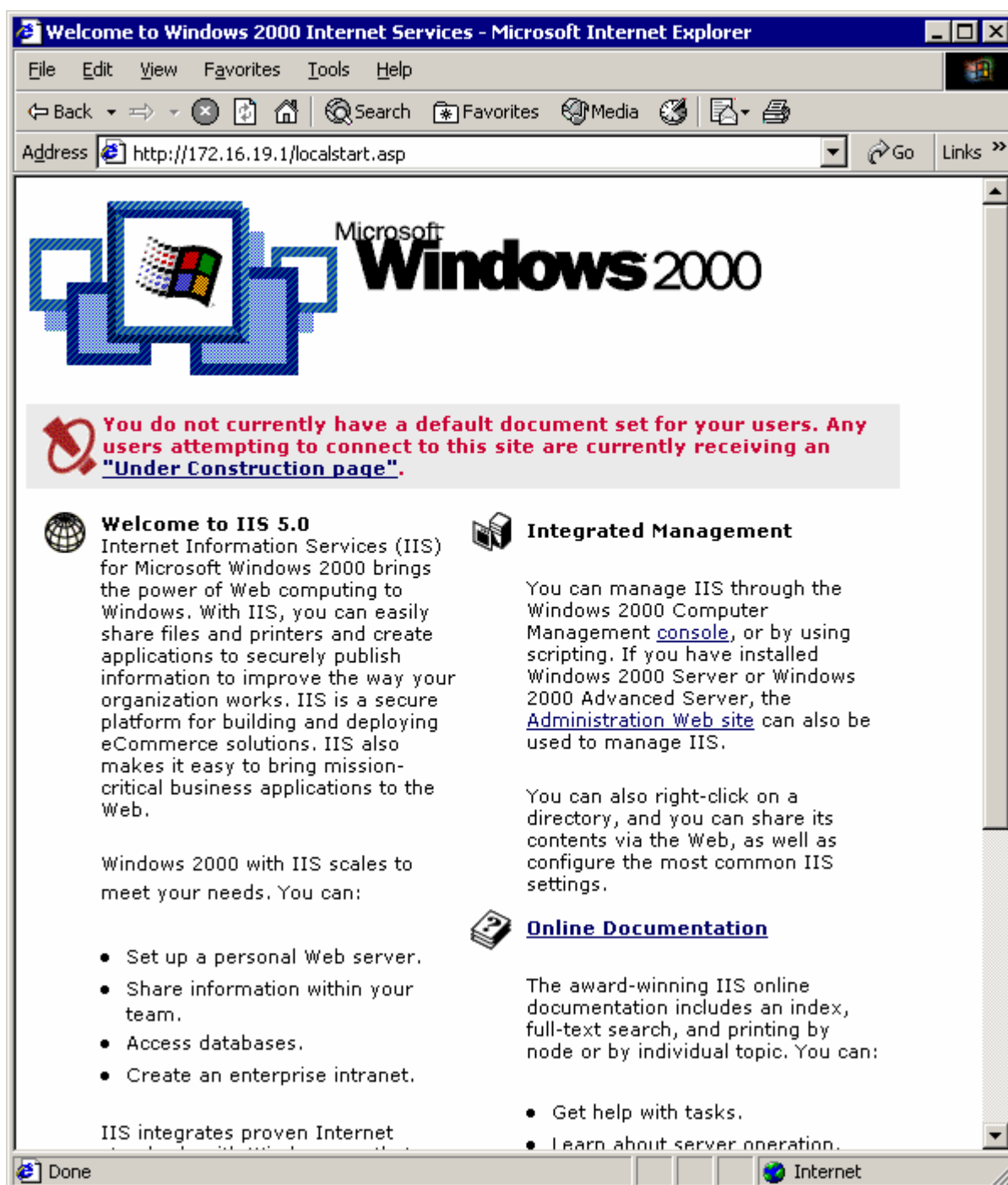


5. Auto Upgrade Server Installation

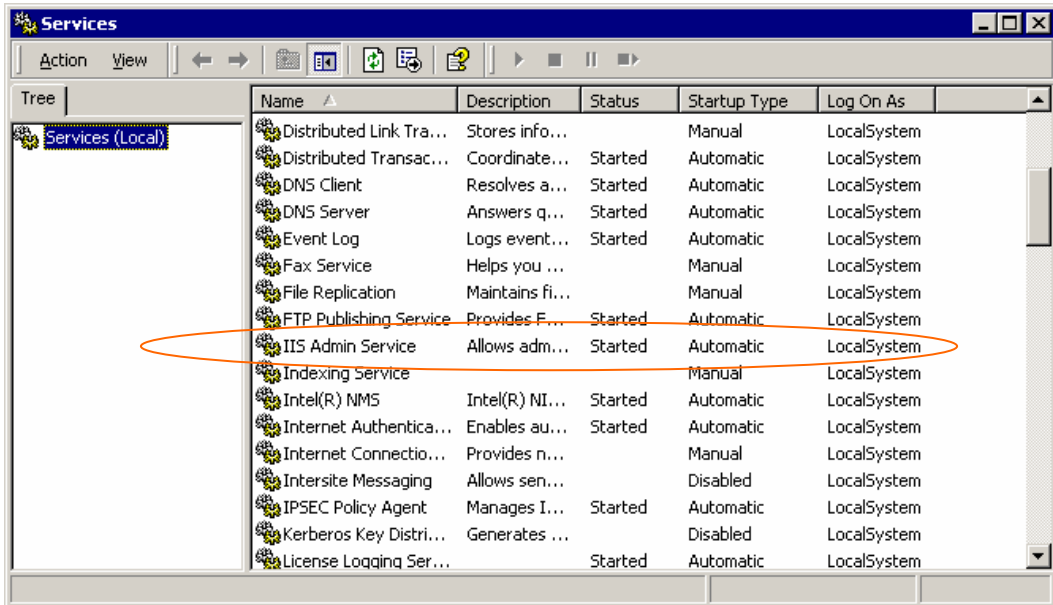
5.1. Configure Web Service (IIS)

- This example of Auto upgrade server installation is based on **Windows 2000 Server OS**.

1) At first, confirm that Web service is already running on target Windows Server.

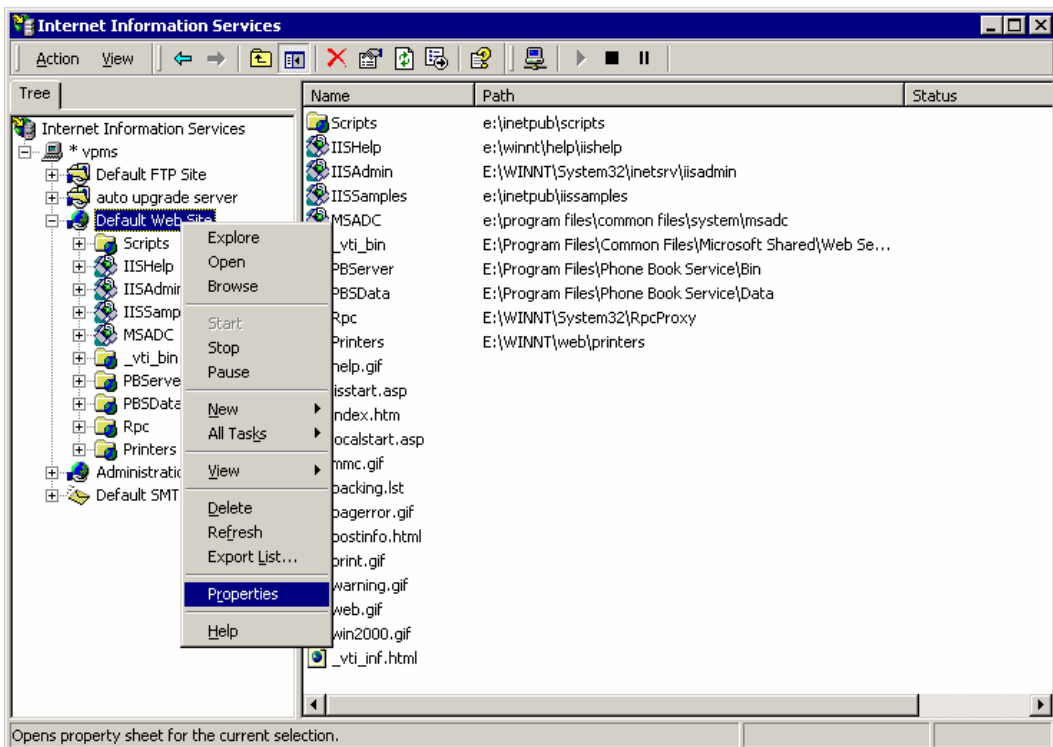


- Run web browser to connect <http://localhost/localstart.asp>, if you saw the upper screen, web service could be being operated normally.
- When web service is not running on target server, confirm that the IIS service is running on the server shown as below.

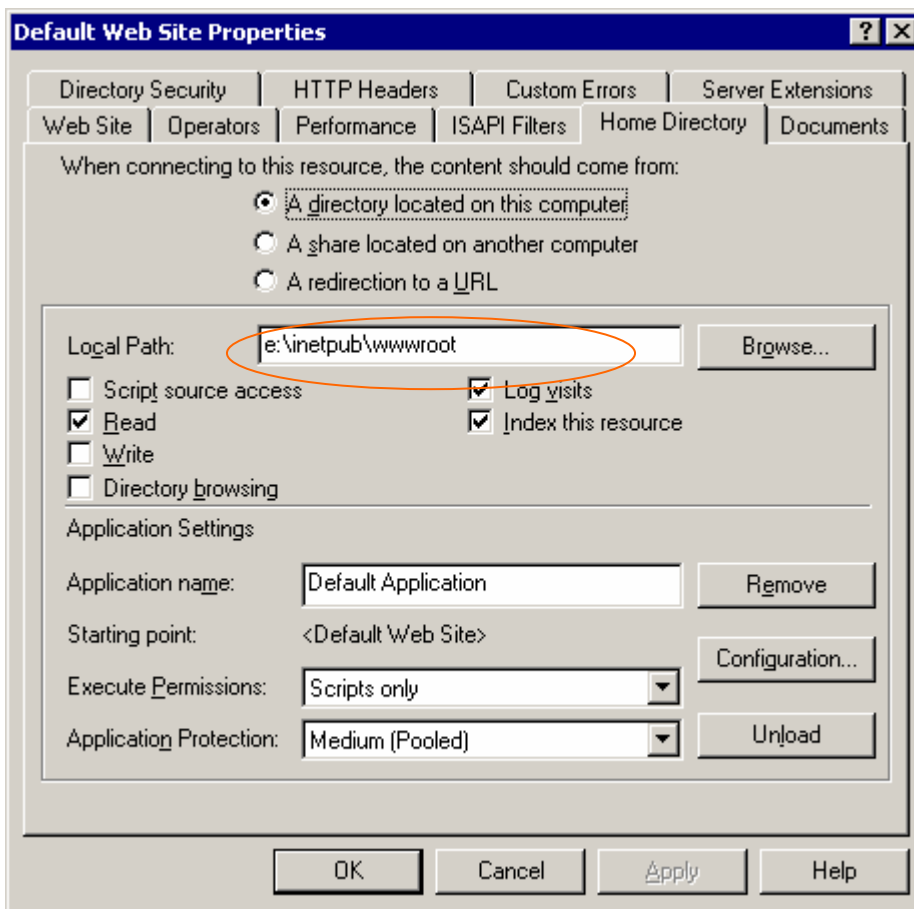


2) Default directory of Web Server is “C:\inetpub\wwwroot\”.

- If you want to modify webserver default directory, you can modify it at internet information service(Start > Programs > Administrative Tools > Internet Information Services).
- Choose Properties to open pull down menu at Default Web Site.



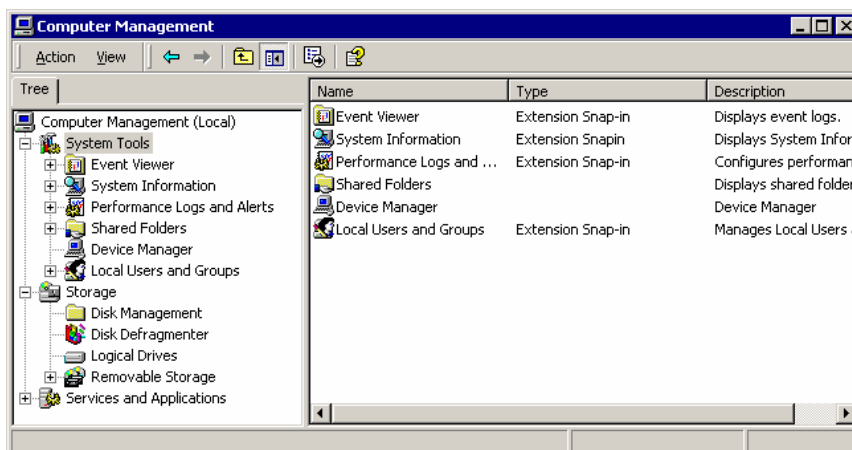
- Set the path to modify Home Directory.



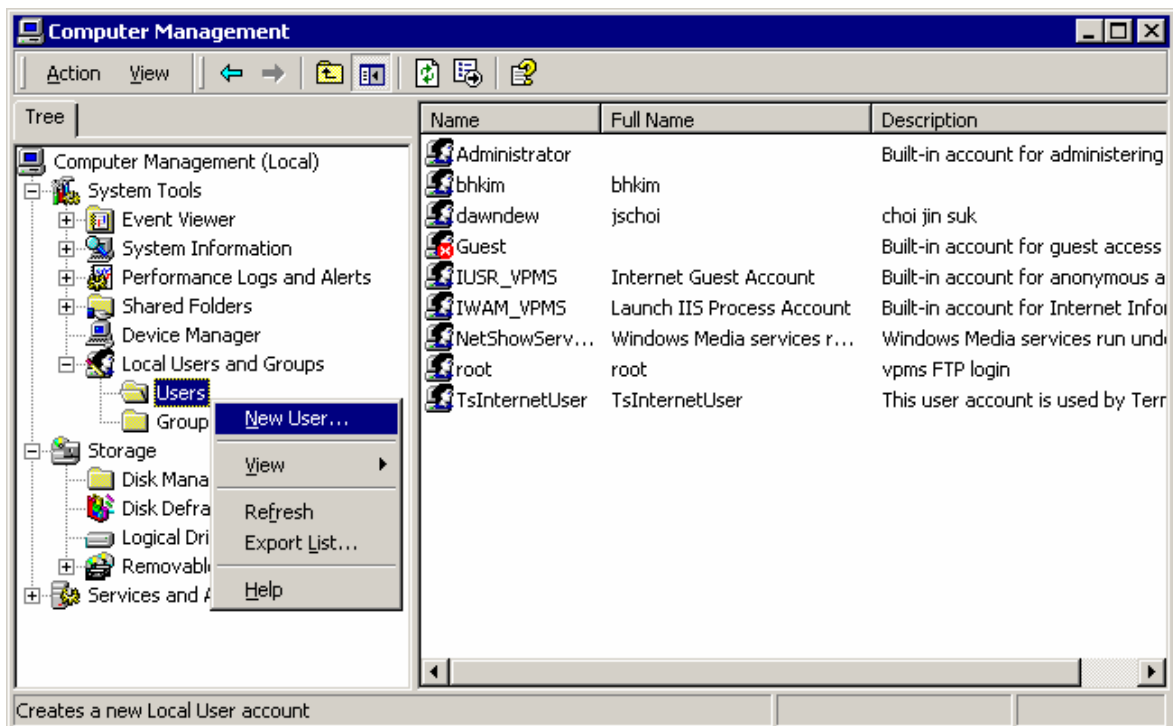
5.2. Configure FTP Server (IIS)

- FTP server could be running well if you installed Windows2000 server .
- Generate new log-in account for FTP service.

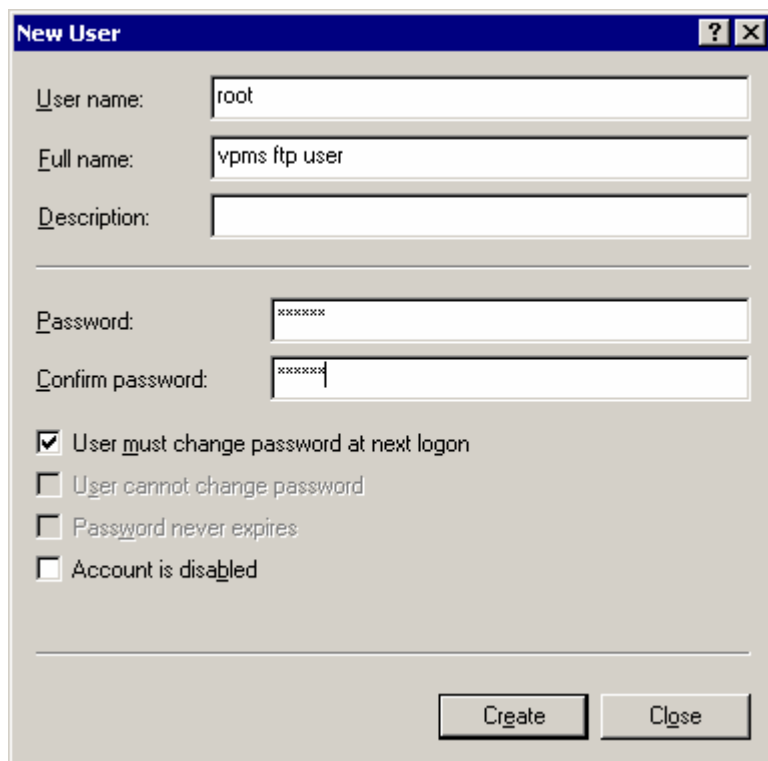
1) To add a new user account, execute (Start > Programs > Administrative Tools > Computer Management).



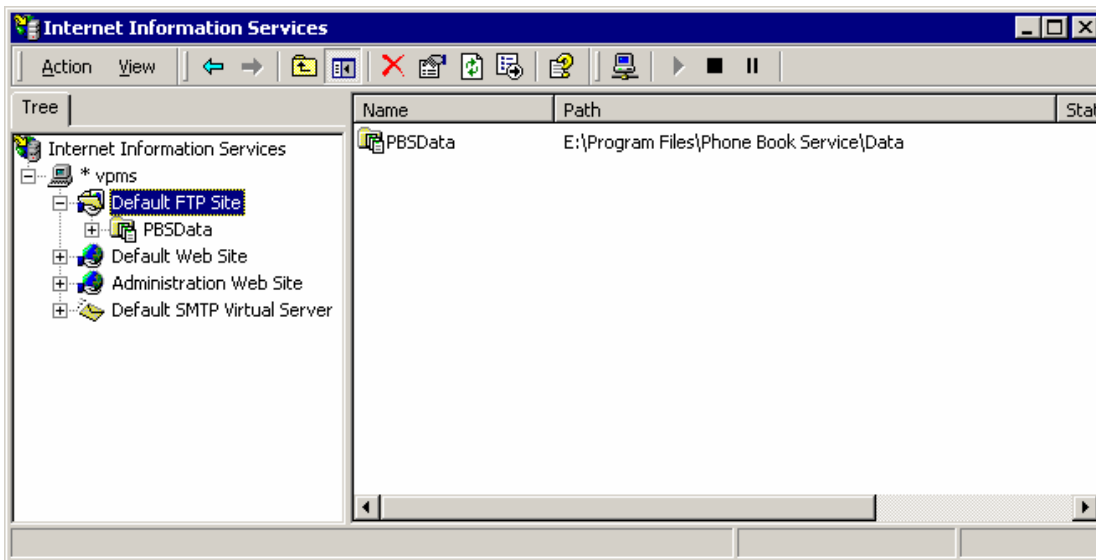
- 2) Select System Tools > Local Users and Groups > Users to open pull down menu and select New User.



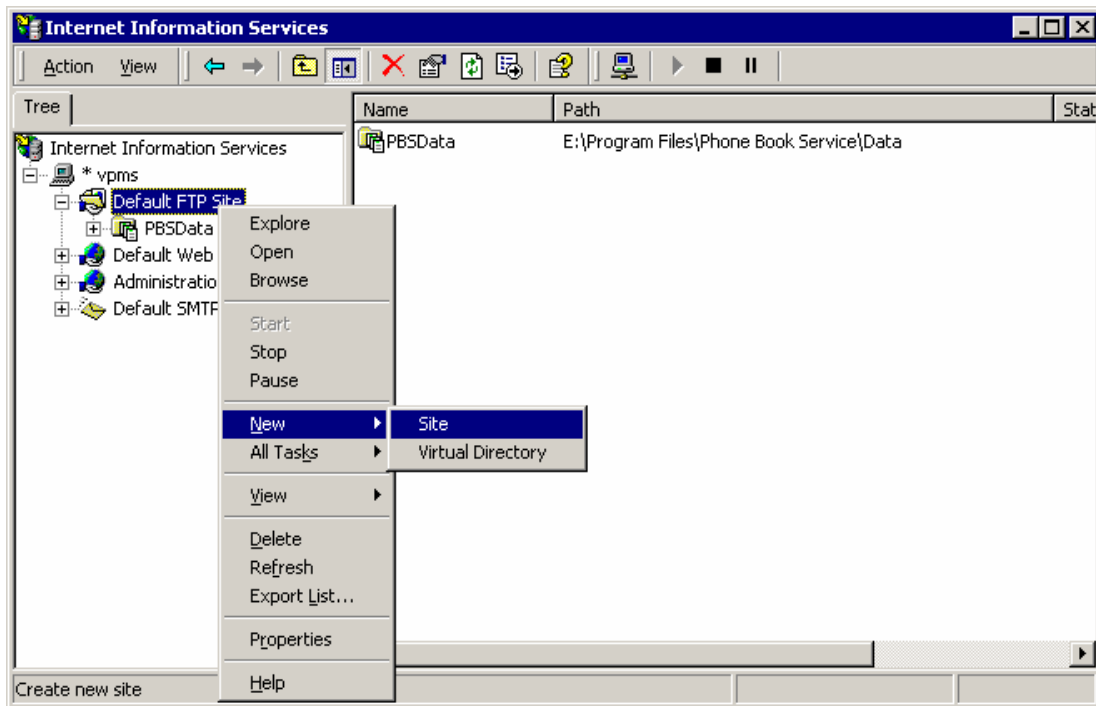
- 3) Register new user.



- 4) Start FTP service (Start > Programs > Administrative Tools > Internet Information Services).



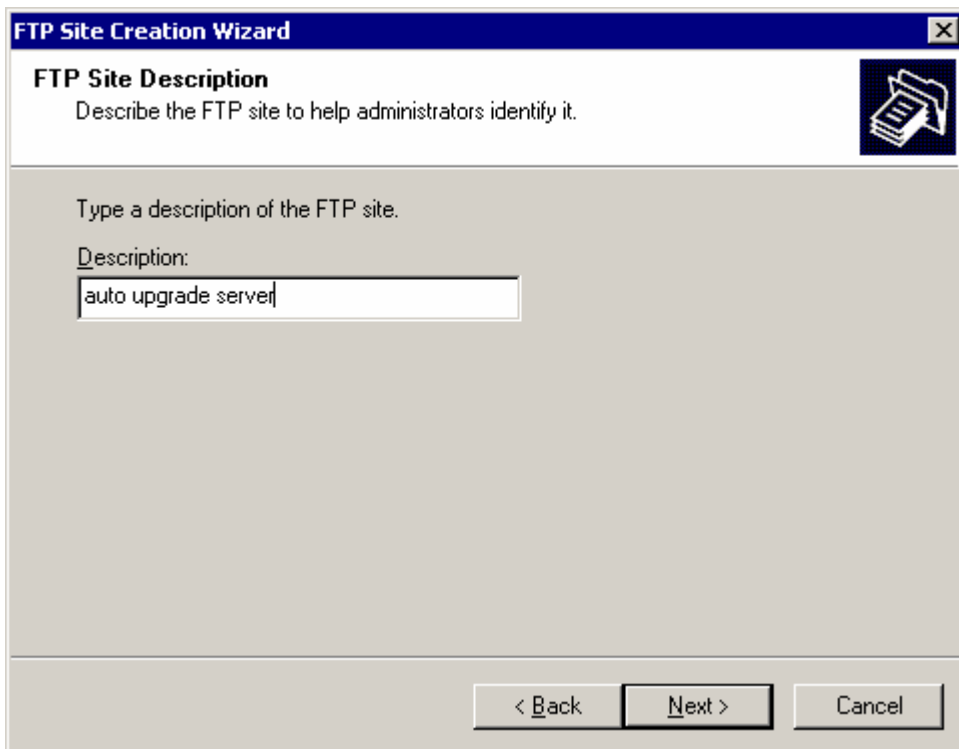
- 5) Select New > Site by clicking mouse right button at Default FTP Site.



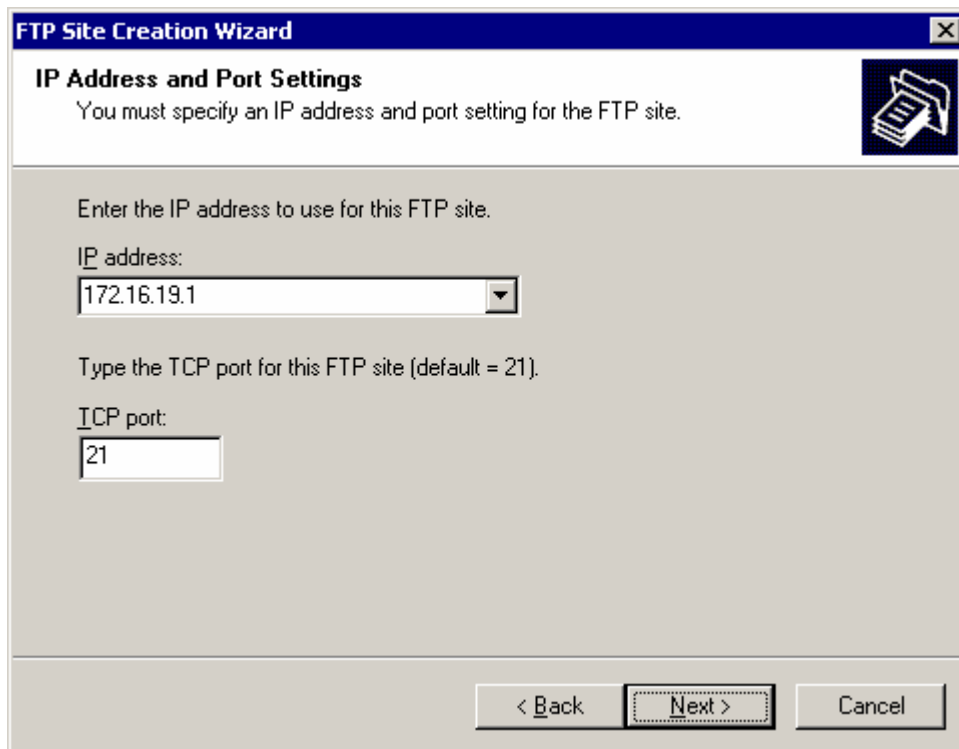
6) FTP Site Creation Wizard will pop-up. (next)



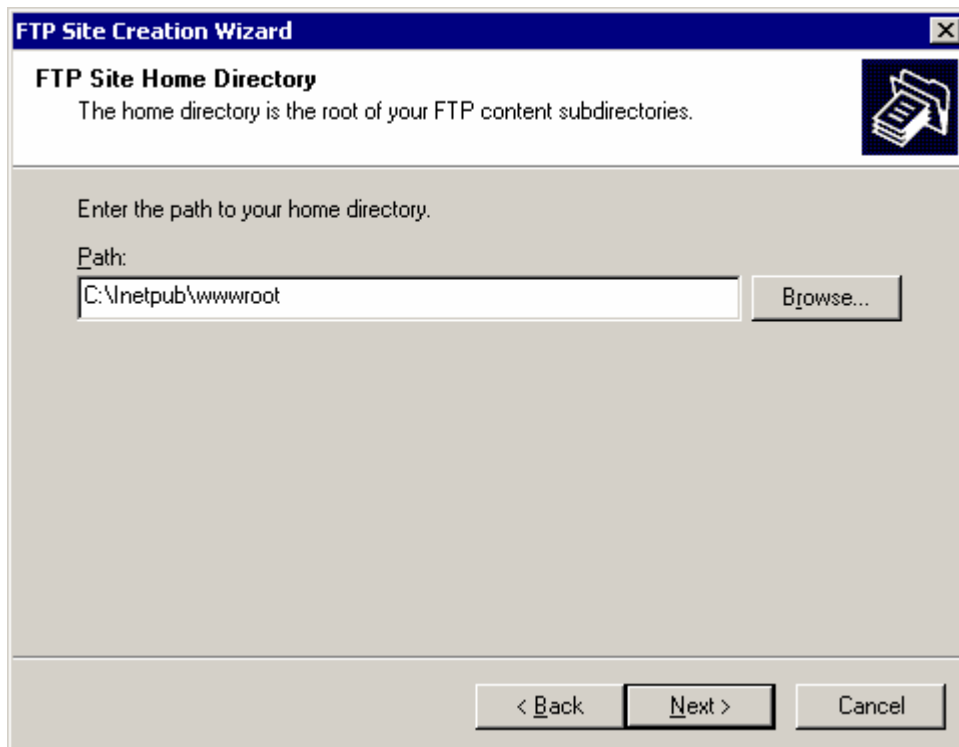
7) Set description. (next)



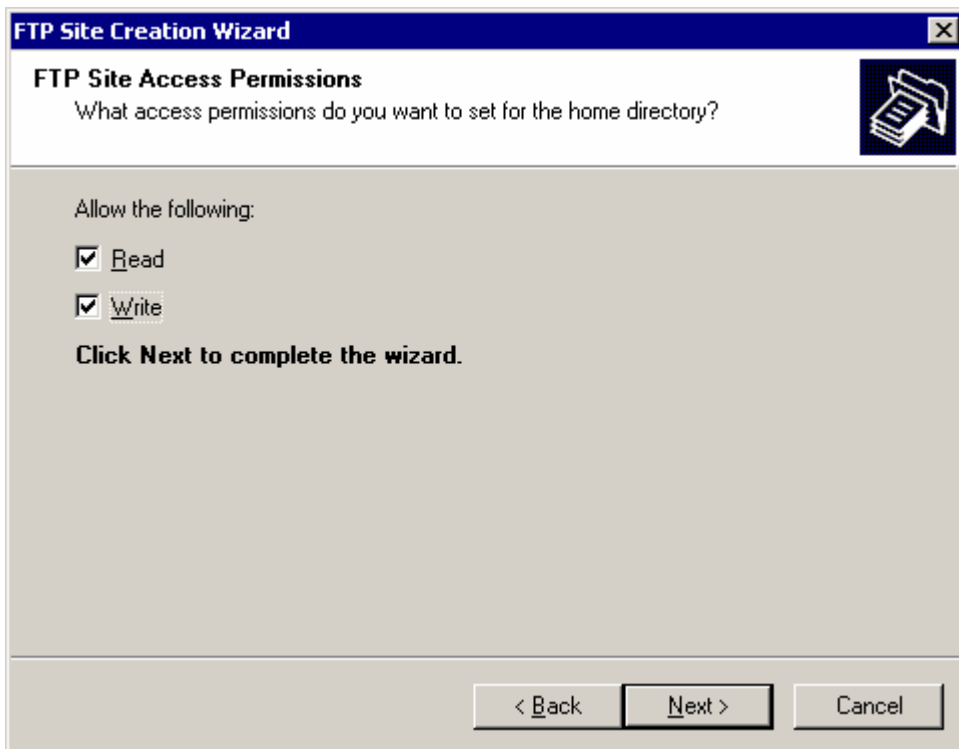
- 8) Set auto upgrade server IP address and port(21). (next)



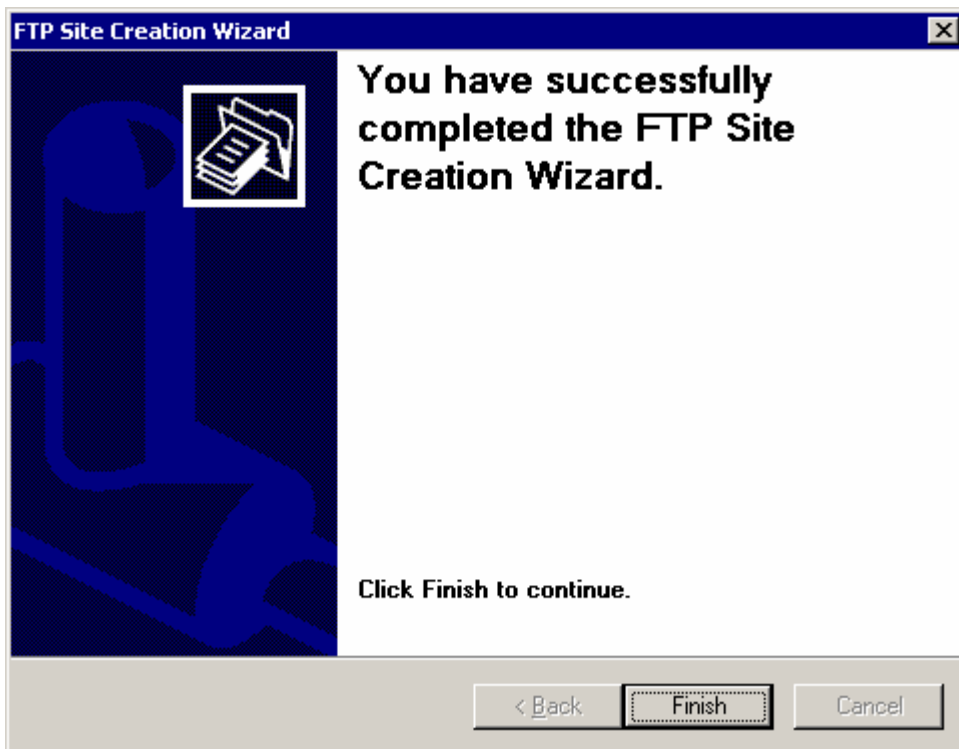
- 9) Set Home Directory as same as Web server's Home Directory.



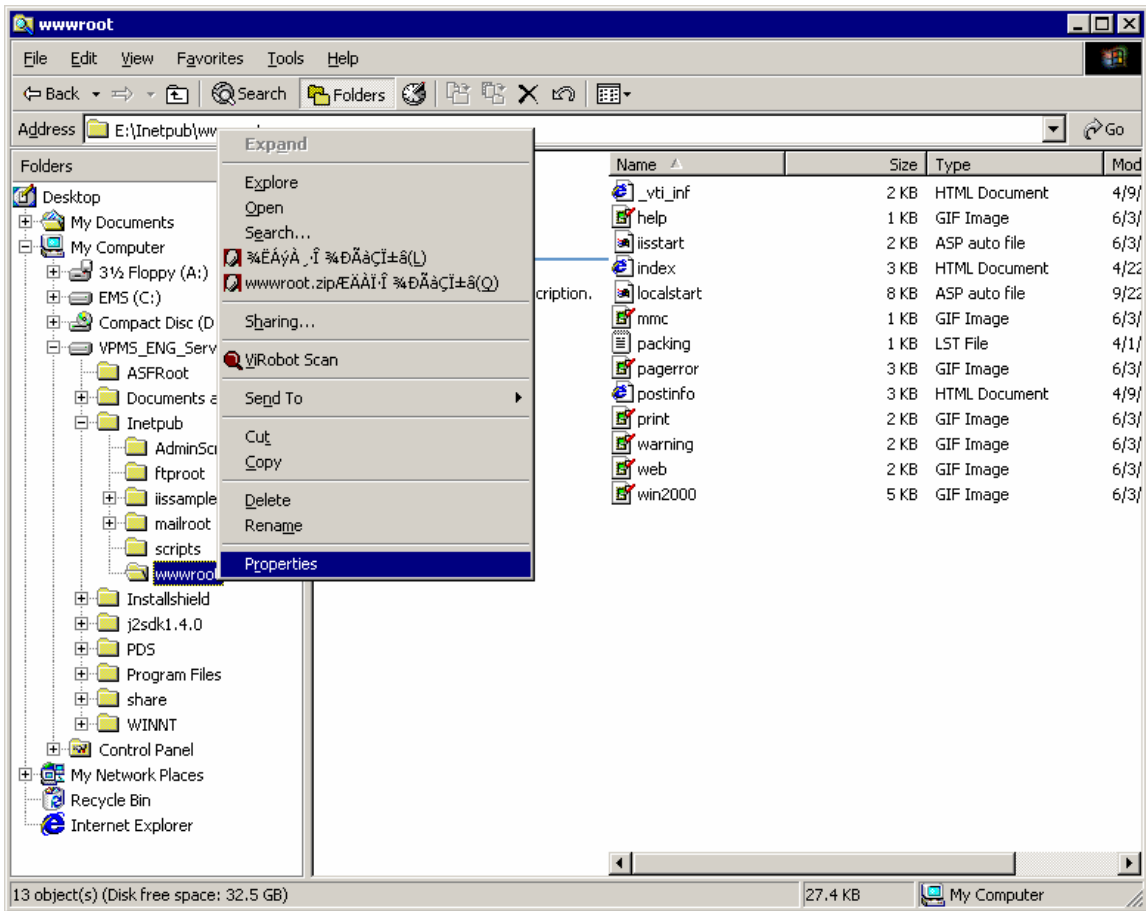
10) Set access permission to allow read and write. (next)



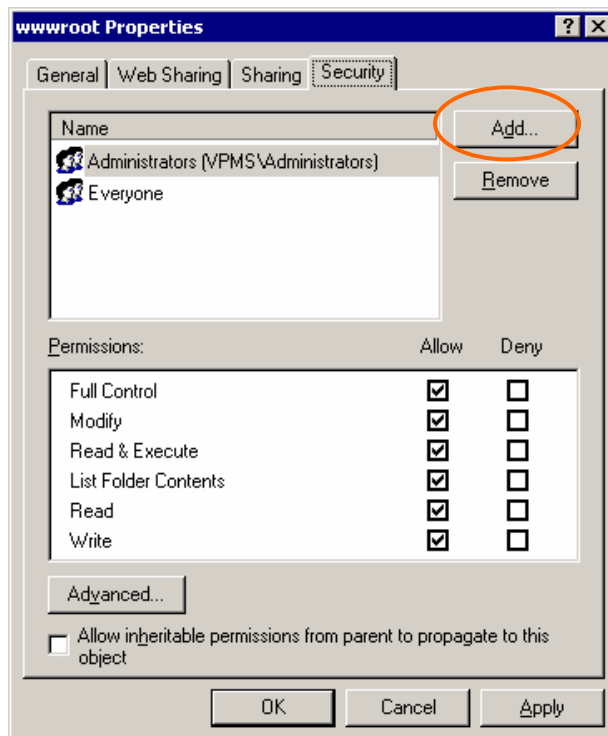
11) Finish FTP site creation wizard. (Finish)



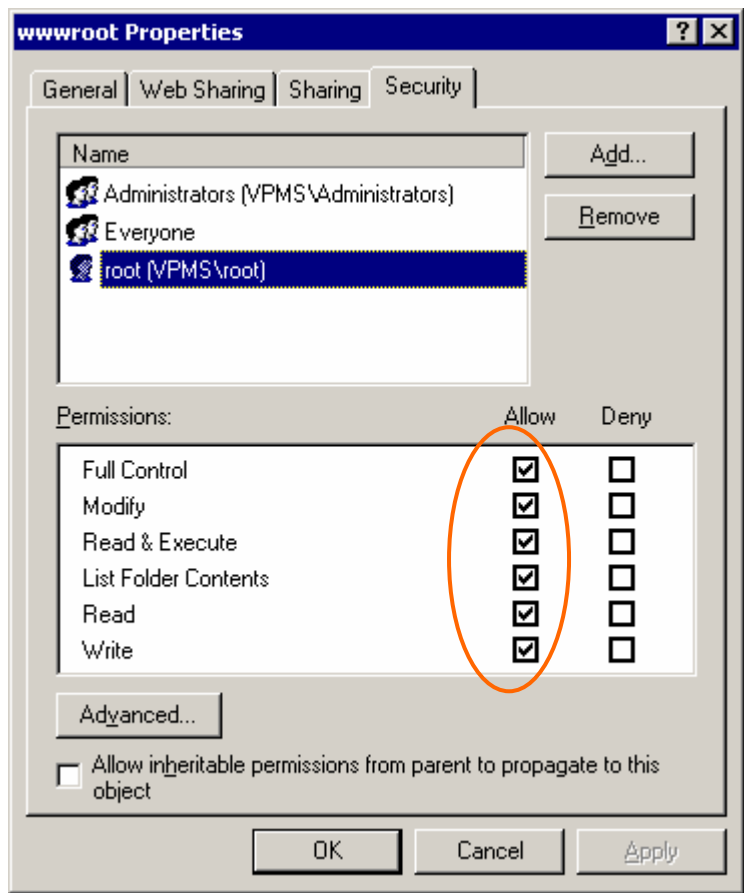
- 12) For download file by FTP, set access permission of Home Directory. Explore to Properties in Home directory.



- 13) Add "root" user account in Properties Security tab.



14) Add "root" user account and set permissions as below.



15) If the configuration is completed, you can test ftp connection and file transfer with root account.