

# VoIP

## AP-MG8000 Next Generation Media Gateway



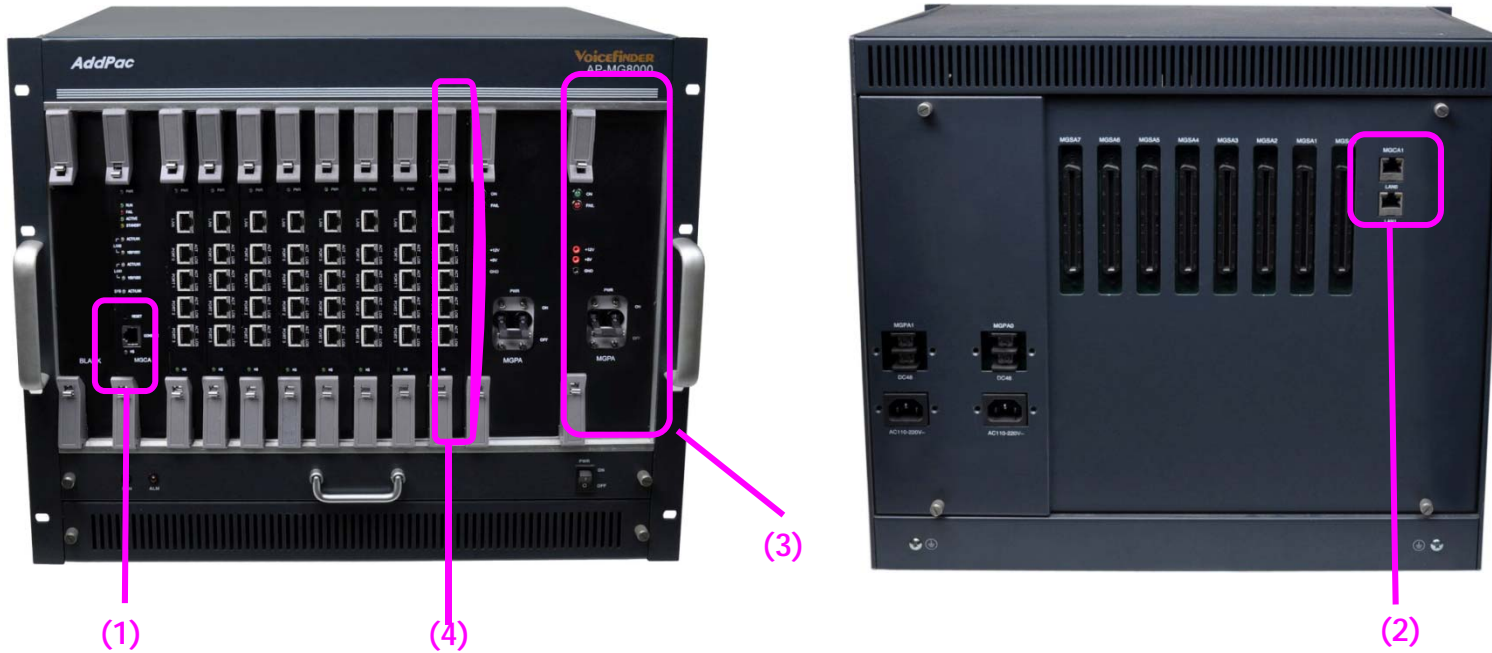
2015

Technical Sales and Marketing

AddPac Technology

[www.addpac.com](http://www.addpac.com)

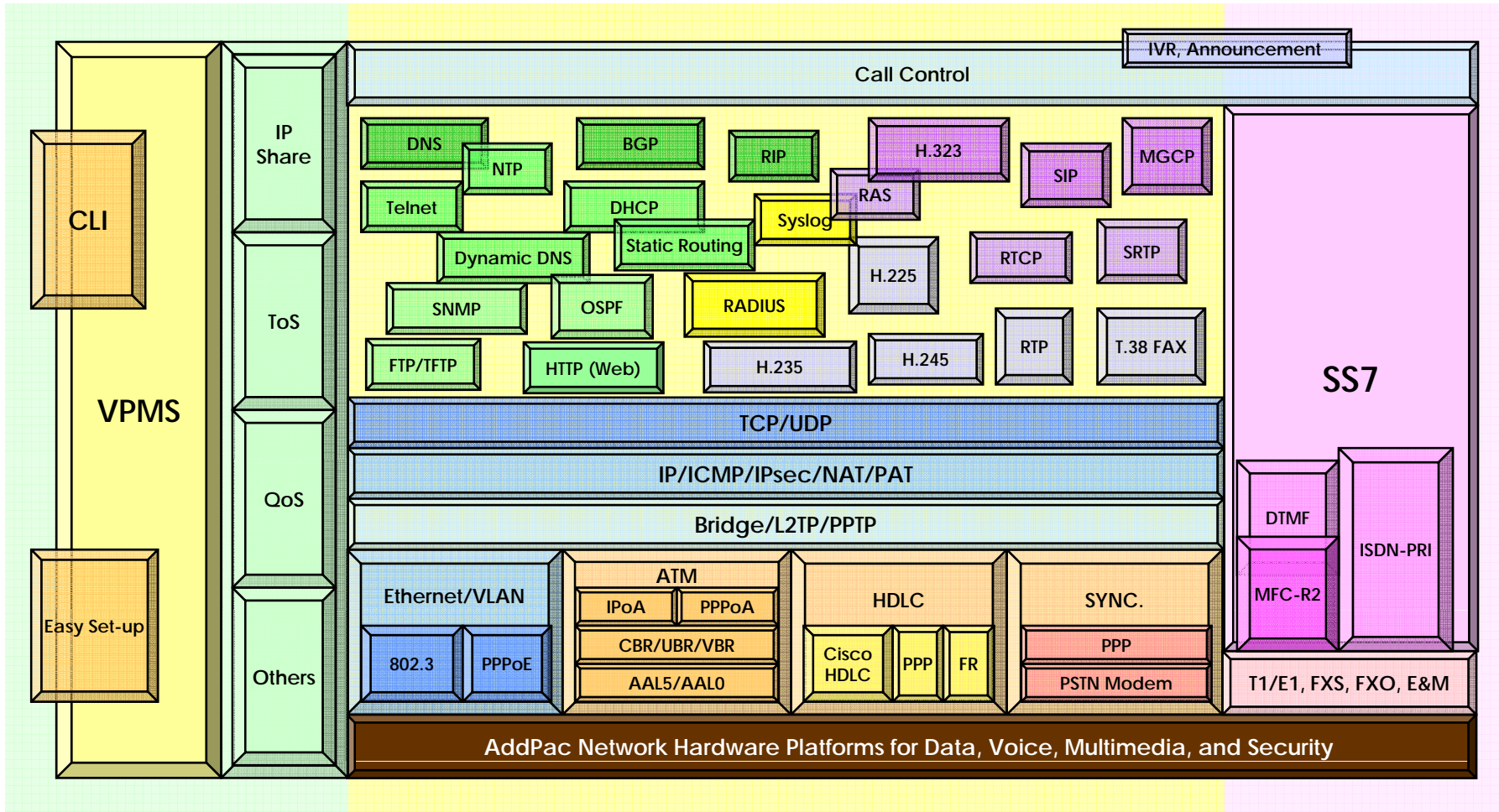
# AP-MG8000 Next Generation Media Gateway



No.	Interface	Explanation
(1)	Asynchronous Serial	One(1) RS-232C serial ports for Local system management
(2)	Gigabit Ethernet	Two(2) 10/100/1000Mbps Gigabit Ethernet Ports for LAN interface
(3)	Power Supply	Module Type Dual Power Supply
(4)	Module Slot 0-8	Four(4) Digital E1/T1 Interface, One(1) 10/100Mbps Fast Ethernet

# AP-MG8000 Media Gateway Product Overview

## APOS Internetworking Protocol Stack

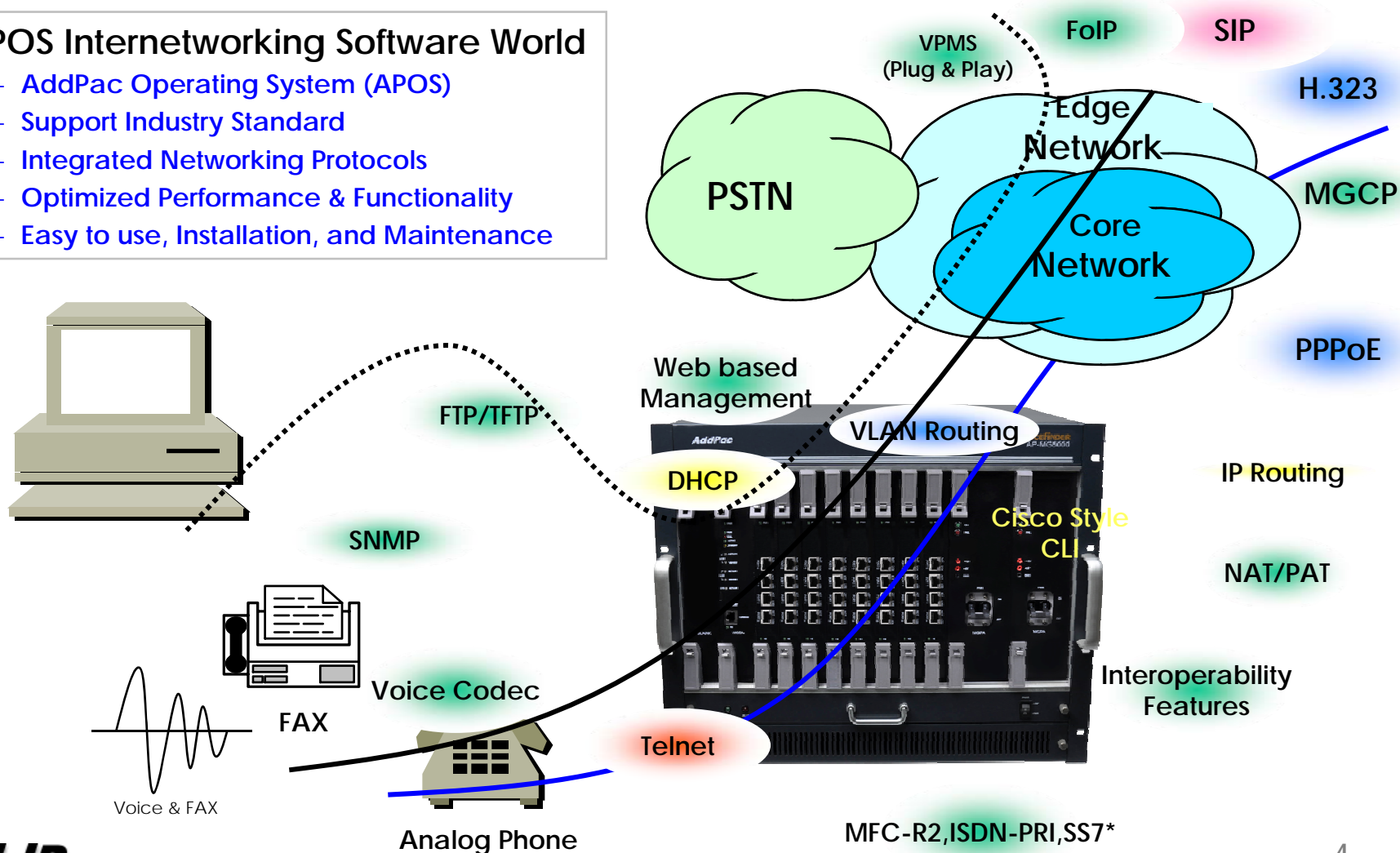


# AP-MG8000 Media Gateway Product Overview

## APOS Internetworking S/W World

### • APOS Internetworking Software World

- AddPac Operating System (APOS)
- Support Industry Standard
- Integrated Networking Protocols
- Optimized Performance & Functionality
- Easy to use, Installation, and Maintenance



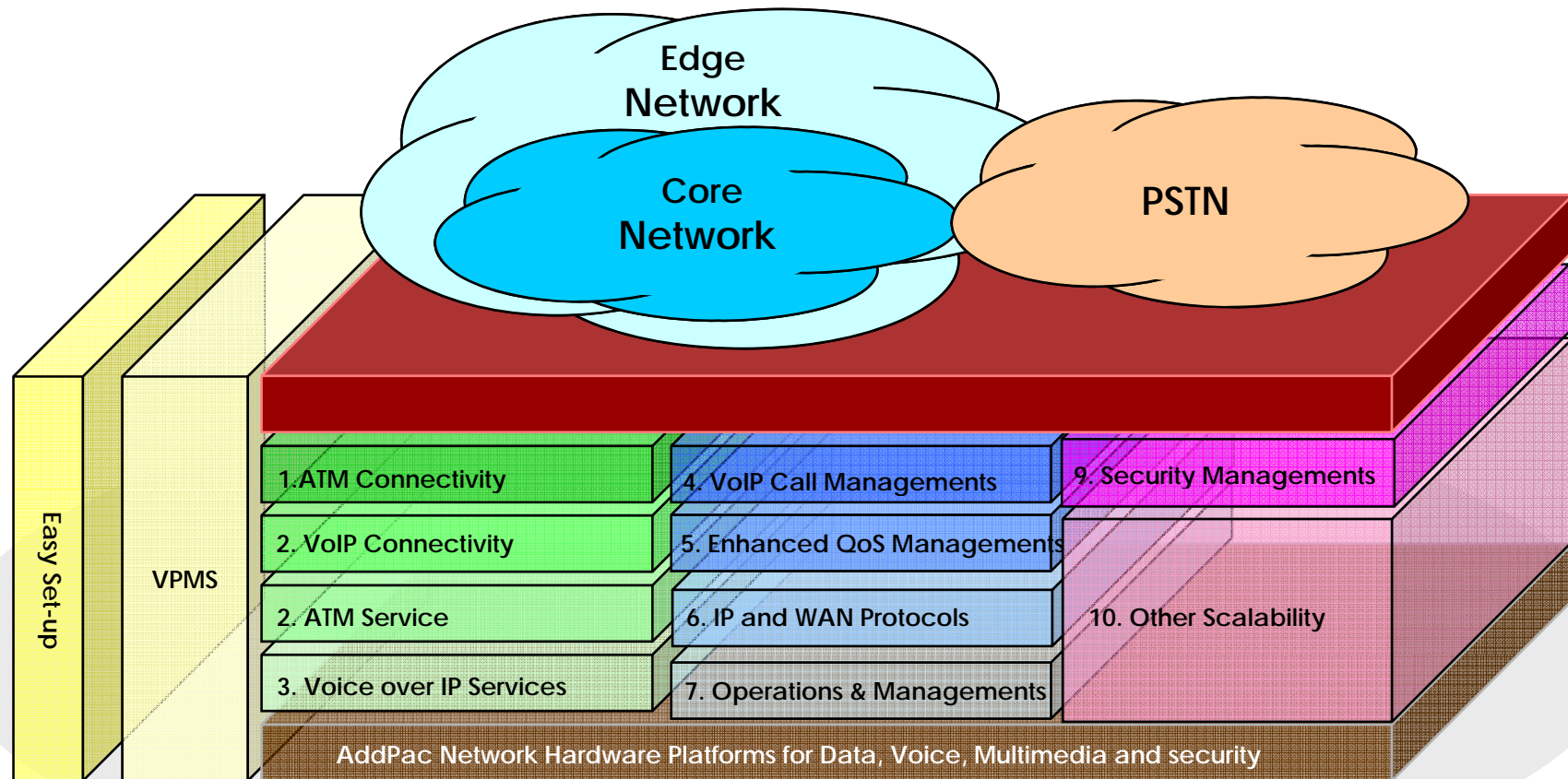
**AddPac**

[www.addpac.com](http://www.addpac.com)



# AP-MG8000 Media Gateway Product Overview

## APOS Internetworking S/W World (cont.)

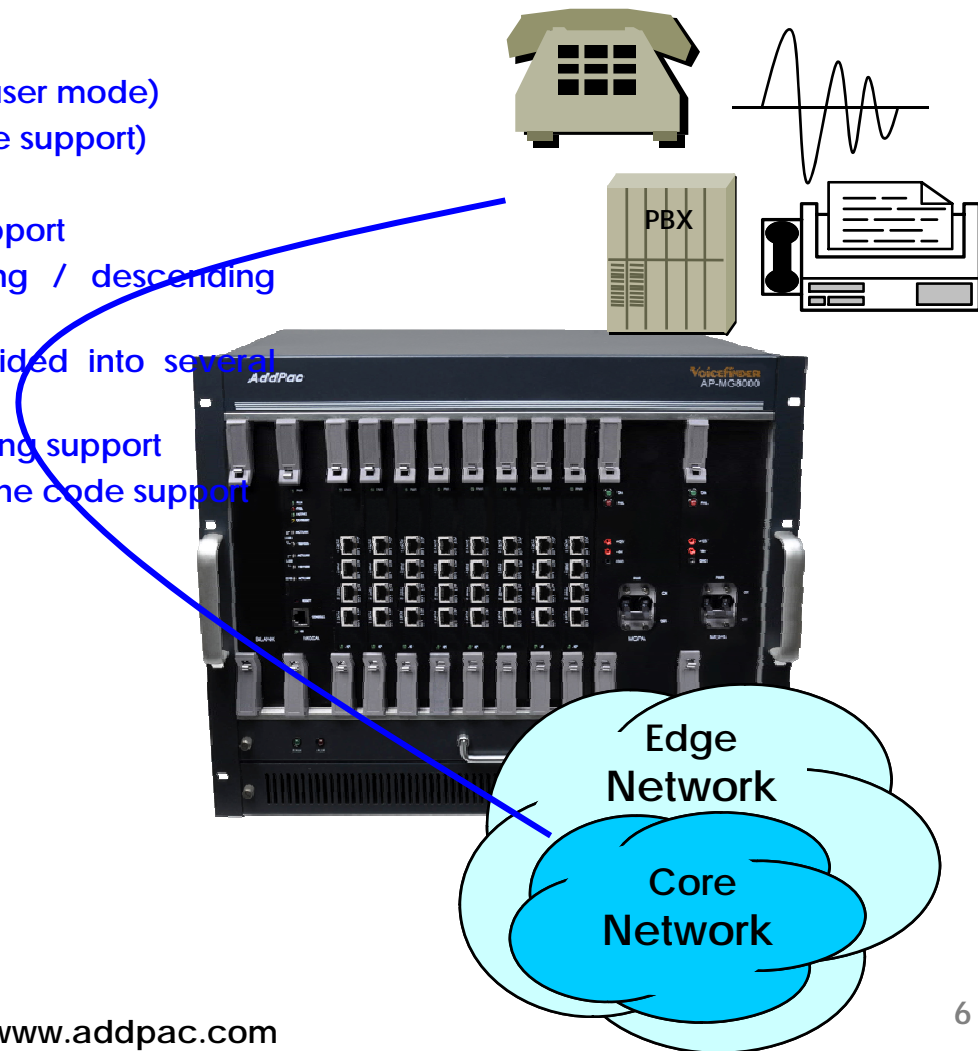


# AP-MG8000 Media Gateway Product Overview

## Digital E1/T1 Interface Connectivity

### • E1/T1

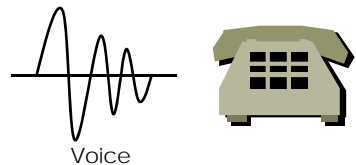
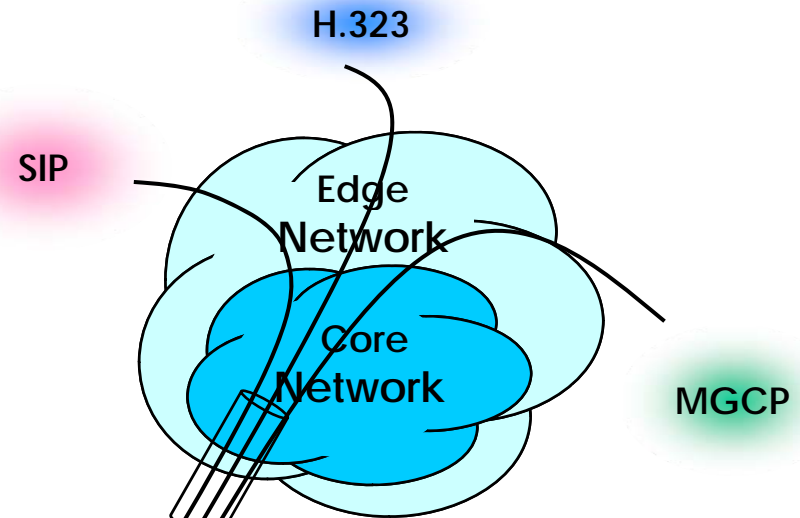
- ISDN PRI signaling support (network mode, user mode)
- R2 signaling support (calling number receive support)
- DTMF signaling support
- Clock source master mode, slave mode support
- In case of channel allocation, ascending / descending random support
- One physical E1/T1 interface can be divided into several logical channel groups
- Super frame, extended super frame T1 framing support
- AMI, AMI-BELL, AMI-GTE, AMI-DDS, B8ZS T1 line code support
- Immediate, Wink-start T1 CAS type support
- SS7\*



# AP-MG8000 Media Gateway Product Overview

## Voice over IP Service

- H.323, SIP, and MGCP Triple Stack
  - Concurrent Triple VoIP Stack Software
  - Single Hardware with Three VoIP Service
  - New APOS-NX Version
- H.323
  - ITU-T Standard H.323 v3 Support
  - Support H.245 Tunneling
  - Including H.235 Security Features
- SIP
  - IETF RFC3261 or RFC2543 SIP Standard
- MGCP
  - IETF RFC2705bis-02 Standard MGCP 1.0



# AP-MG8000 Media Gateway Product Overview

## Voice over IP Service (cont.)

- H.323

- Fast connect, normal connect support
- H.245 tunneling support
- Q.931 response message setting for inbound VoIP calls
- H.245 logical channel open timing selection function
- Start H.245 procedure support
- DTMF / Hook flash relay with H.245 alphanumeric / signal
- Secondary gatekeeper support
- Gatekeeper assignment according to the domain name
- Gatekeeper discovery with multicast
- Lightweight RRQ support
- Signaling TCP port assignment
- Resource threshold setting with RAI
- H.235 clear-token, crypto-token support
- canMapAlias support
- Technical prefix (supported prefix) support
- Public IP assignment in NAT environment

- SIP

- Gateway-based / Endpoint-based registration support
- Secondary proxy-server assignment function
- SIP signaling port change function
- SIP proxy server assignment according to the domain name
- T.38 real-time fax relay support
- DTMF relay support with RFC2833 / OPTION message
- Re-INVITE support

- MGCP

- Secondary call agent assignment function
- Default package assignment
- Announcement Server Package, Generic Media Package, Handset Package, Line Package, Trunk Package support
- MGCP call agent assignment according to the domain name
- T.38 real-time fax relay support
- DTMF relay support based on RFC2833

# AP-MG8000 Media Gateway Product Overview

## Voice over IP Service (cont.)

- Voice Codec

- G.711 A-Law, G.711 U-Law
- G.726 r16, G.726 r32
- G.729A
- G.723.1 r63, G.723.1 r53
- VAD (Voice Activity Detection) function support
- DTMF relay support (H.323, SIP, MGCP common) based on RFC2833

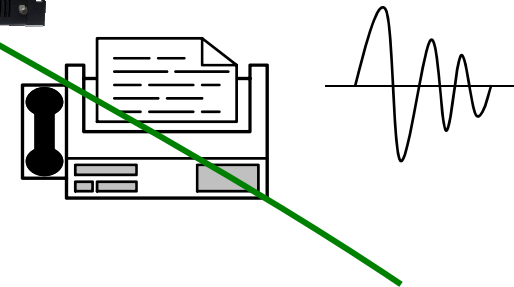
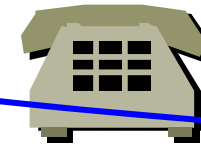
- RTP

- Redundant RTP packet transmission in case of severe packet loss
- Dynamic jitter buffer management and RTP packet jitter and loss compensation with heuristic & DSP error concealment
- Static jitter buffer setting support
- Voice frame per RTP packet number control for each codec
- In-band ring-back tone support
- Virtual ring-back tone support
- Tone parameter change support

- FAX

- Fax relay mode supporting T.38, inband-T.38, bypass mode
- Lost packet compensation with redundant setting in case of T.38 fax relay
- Fax relay mode, rate setting for remote end

VoIP





# AP-MG8000 Media Gateway Product Overview

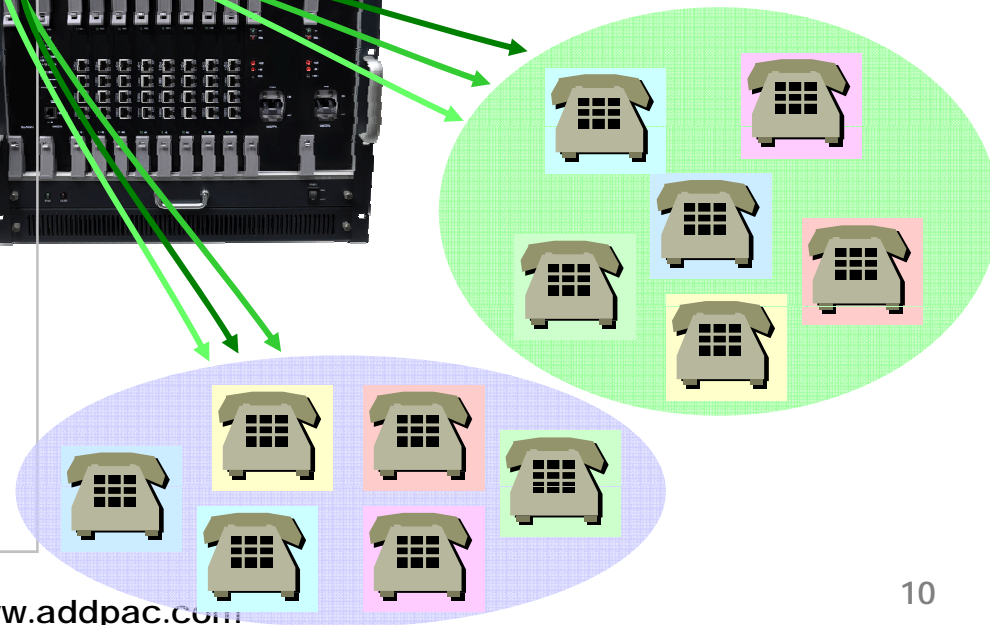
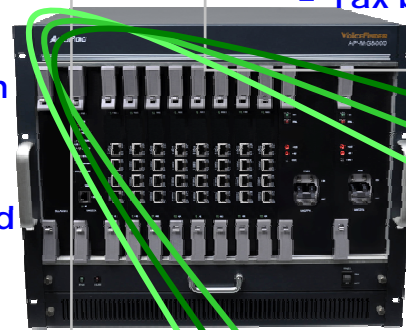
## VoIP Call Managements

### • VoIP Call Controls

- Hot line connection function with PLAR (Private Line Auto Ring Down)
- Leased line emulation function
- Connection monitoring function
- Fault tolerant with Redundancy and Call Distribution among Gateways for load balancing
- Call attempt with IP address
- H.323, SIP, MGCP inbound call connection for each voice port
- Multiple E.164 setting for one voice port
- One E.164 or digit pattern can be assigned to more than one voice port
- Hunting with Longest match/ priority/ sequence/ random
- One stage call setup by Digit forwarding
- Call barring with specific digit patterns
- Calling and called number conversion for PSTN outbound calls
- PSTN rerouting in case of VoIP call attempt failure

### • VoIP Call Controls (cont.)

- Call transfer for internal calls
- Call pickup for internal calls
- Calling and called number conversion for VoIP outbound calls
- Calling and called number conversion for VoIP inbound calls
- Fax broadcasting call control



# AP-MG8000 Media Gateway Product Overview

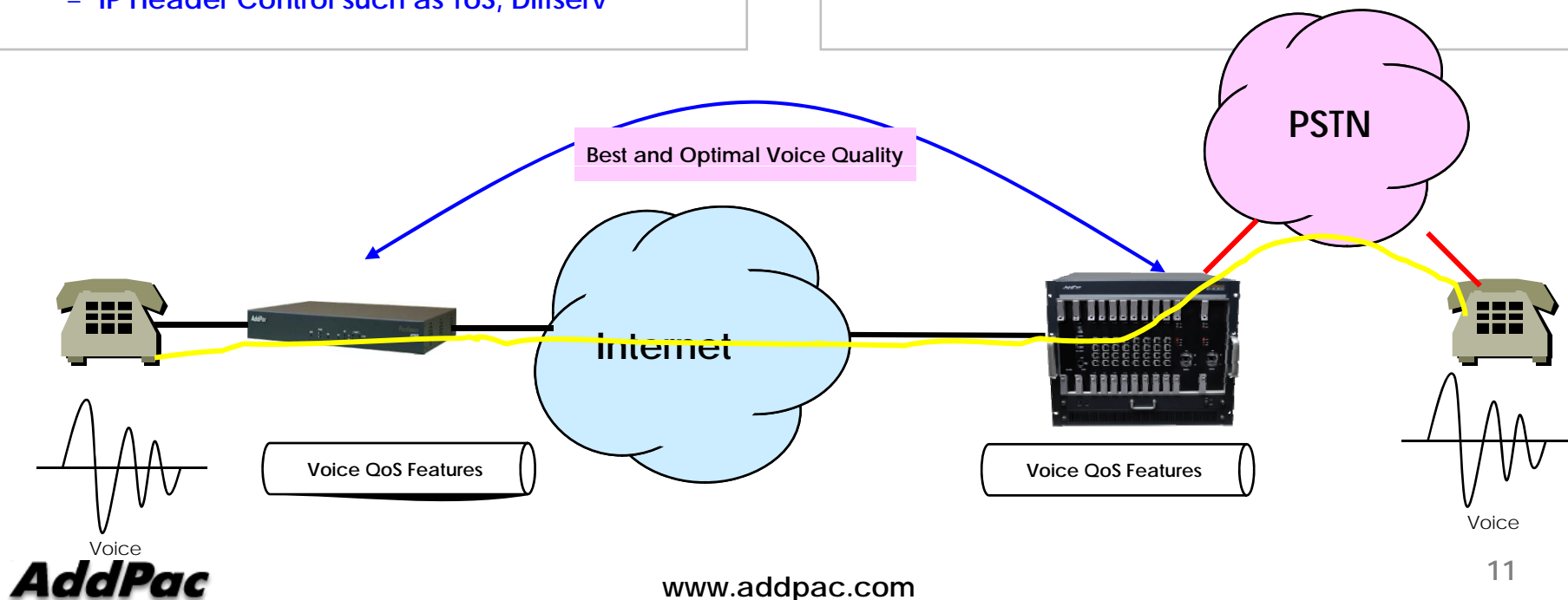
## Enhances QoS Managements

- Enhances **Transmit** Voice QoS Features

- Voice Traffic Priority Queuing
- QoS Service Profiling
- Providing Virtual Network Transmit Algorithm
- Real-time Voice Traffic QoS Support
- RTP Packet Transmit Interval Control
- Supporting RTP Packet Redundancy Scheme
- IP Header Control such as ToS, Diffserv

- Enhances **Receive** Voice QoS Features

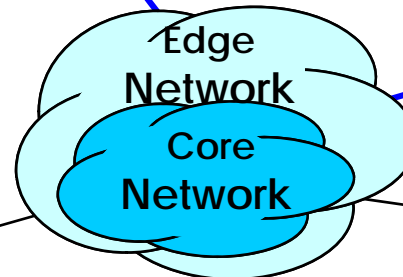
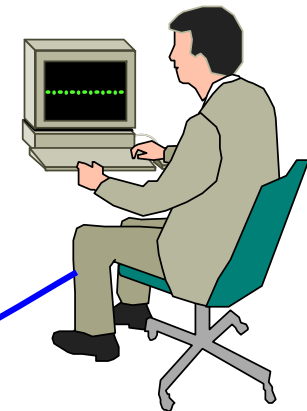
- Dynamic Jitter Buffer Management
- Error Concealment
- Support T.38 FAX Data Error Recovery Scheme



# AP-MG8000 Media Gateway Product Overview

## Network Managements

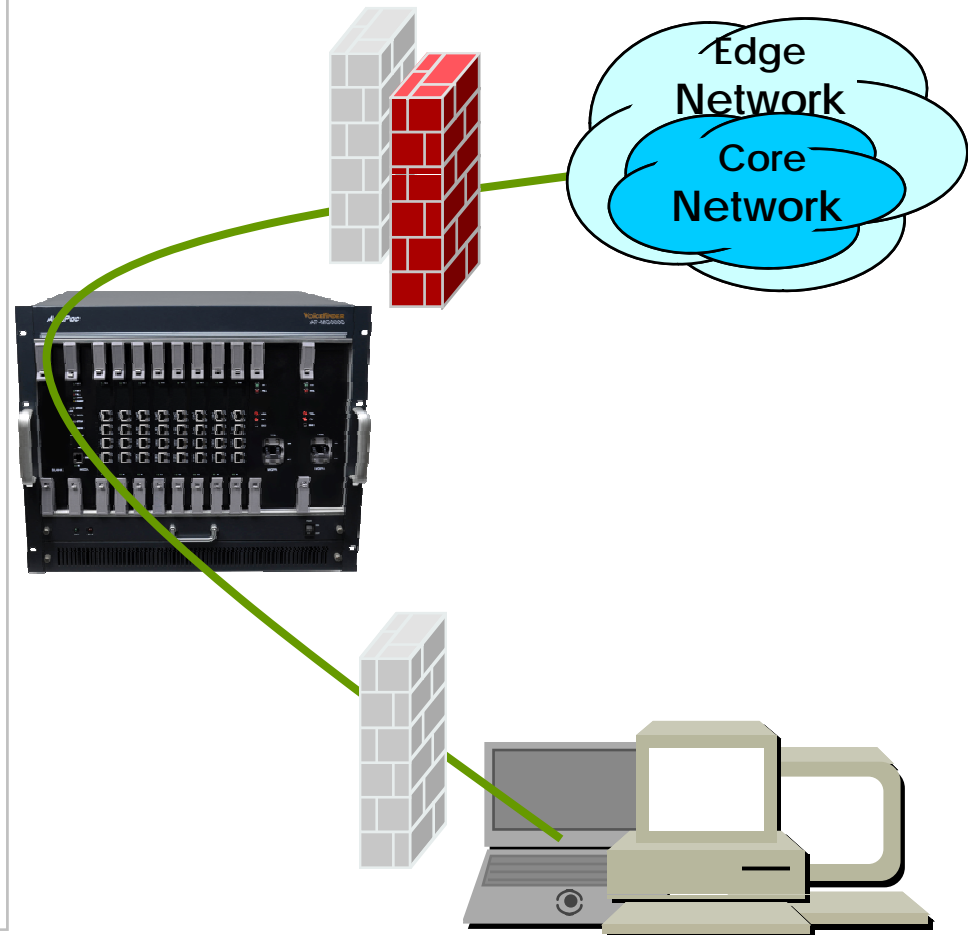
- **SNMP**
  - Standard Simple Network Management Protocol( SNMP) Agent support
  - MIB v1 and v2 Support
- **Web-based Management**
  - Standard Digital E1/T1 Voice Interface
- **Watch-dog Function**
  - Hardware, Software watch-dog services
- **Remote Management**
  - Telnet
  - Rlogin
  - Console
- **Auto Upgrade Service**
  - HTTP server based APOS image and configuration file auto-upgrade support
- **Batch Job Function**
  - Text based script downloading



# AP-MG8000 Media Gateway Product Overview

## Security Managements

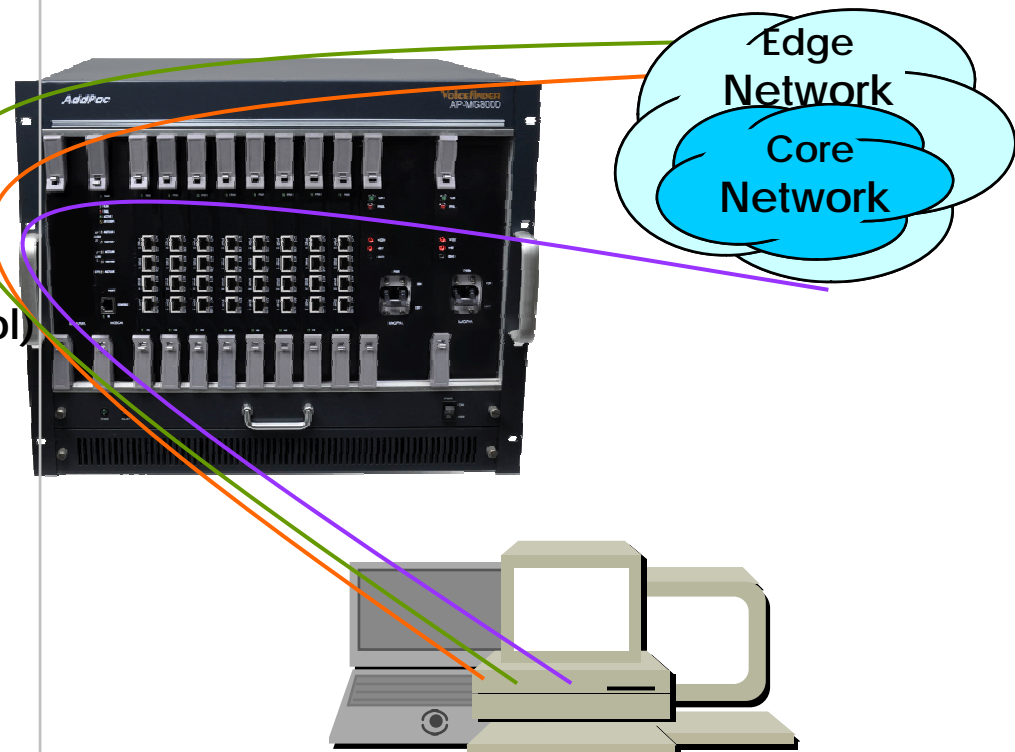
- IP packet filtering
- IP access list
- User authentication function
  - Password Authentication Protocol (PAP)
  - Challenge Handshake Authentication Protocol (CHAP)
- Enable/Disable specific protocols
- Auto-square connect of console and Telnet session
- Account Management function for multi-level user
- SNMP/TELNET/FTP/HTTP/TFTP port assignment function
- SNMP/TELNET/FTP access list management
- Boot mode security checking function



# AP-MG8000 Media Gateway Product Overview

## Network Scalability

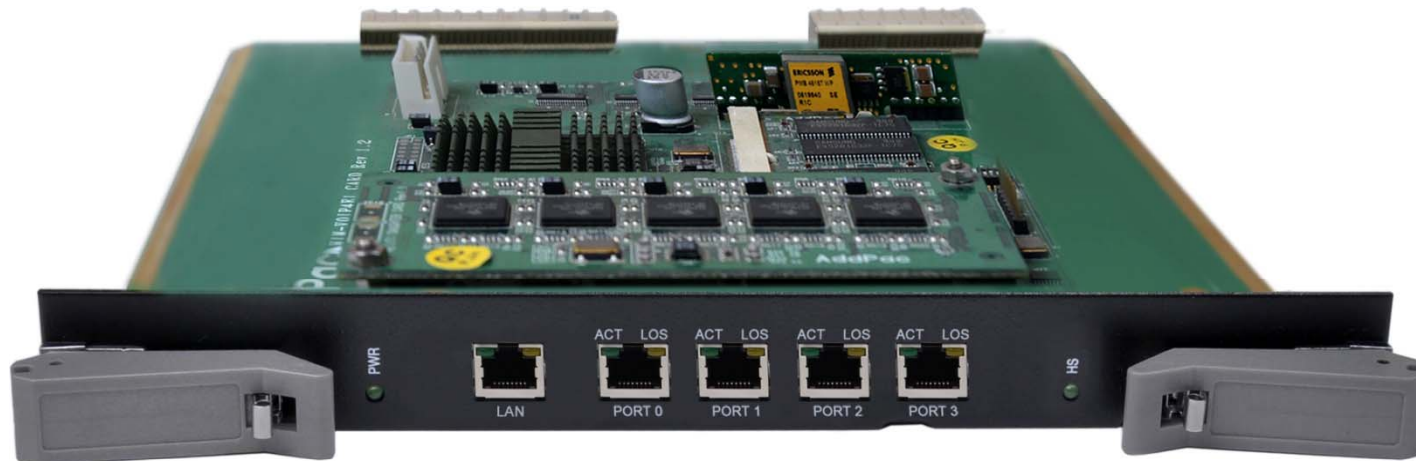
- Bridging Service
  - Spanning Tree Bridging protocol (IEEE) support
- DHCP
  - Server and Relay
- IP Accounting
- PAT (Port Address Translation)
- NAT (Network Address Translation)
- Cisco Style CLI (Command Line Interface)
- PPTP (Point-to-Point Tunneling Protocol)
- NTP (Network Time Protocol)
- FTP/TFTP
  - Server and Client support
- DNS
  - Dynamic DNS Client support





# AP-MG8000 Next Generation Media Gateway

## AP-MG8000 4E1 DSP Module



4E1 DSP Module	Processor	64bit Communication Microprocessor	
	Memory	SDRAM	64Mbyte High Speed SDRAM
		Boot Memory	512Kbyte Flash Memory
	Network Interface	Six(6) 10/100 Fast Ethernet Ports for LAN interface	
1-Port 10/100Mbps Fast Ethernet Interface (1 x RJ45)			

# AP-MG8000 Next Generation Media Gateway

## AP-MG8000 System CPU board



MG8000 Main Board	Processor	64bit High-End RISC Microprocessor	
	Memory	Flash Memory	512Mbyte NAND
		SDRAM	256Mbyte High Speed DDR2
		Boot Memory	512Kbyte Flash Memory
Network Interface	Two(2) 10/100/1000M Giga Ethernet Ports		
	One(1) RS-232C serial ports for Local system management		

# AP-MG5000 Next Generation Media Gateway

## AP-MG5000 Dual Power Supply



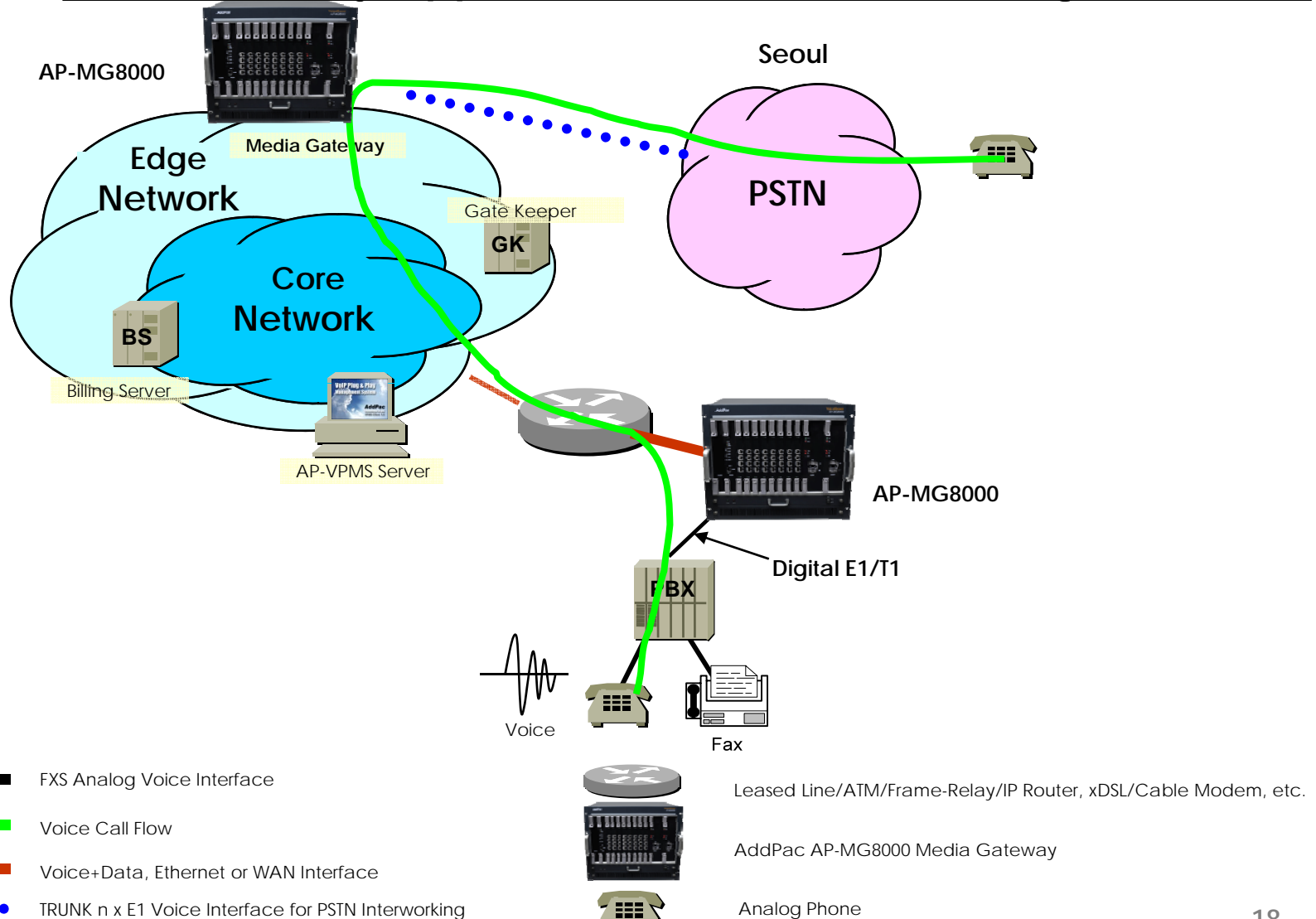
Power Supply Module

Power Switch

Power Inlet 110-220VAC

# AP-MG8000 Networking Configuration

## VoIP Gateway Appl.(VoIP to PSTN Inter-working Call Flow)



# AP-MG8000 Media Gateway Product Overview

## AP-MG8000 Ordering and Pricing

- AP-MG8000 Media Gateway

- AP-MG8000-01 : AP-MG8000 Standard Configuration

- Two(2) Gigabit Ethernet Interface
    - One(1) RJ45 Console Port
    - 64bit RISC CPU, 512MB Flash, 256MB DDR2
    - APOS v5.xx with Operation Manual
    - Including CAB-LAN, CAB-CON

- MG8000-4E1 : 4 Port Digital E1 Interface Module

- CAB-LAN :RJ45 Ethernet Cable

- CAB-CON :RJ45 RS-232C Console Cable





# Thank you!

AddPac Technology Co., Ltd.  
Sales and Marketing

Phone +82.2.568.3848 (KOREA)

FAX +82.2.568.3847 (KOREA)

E-mail : sales@addpac.com