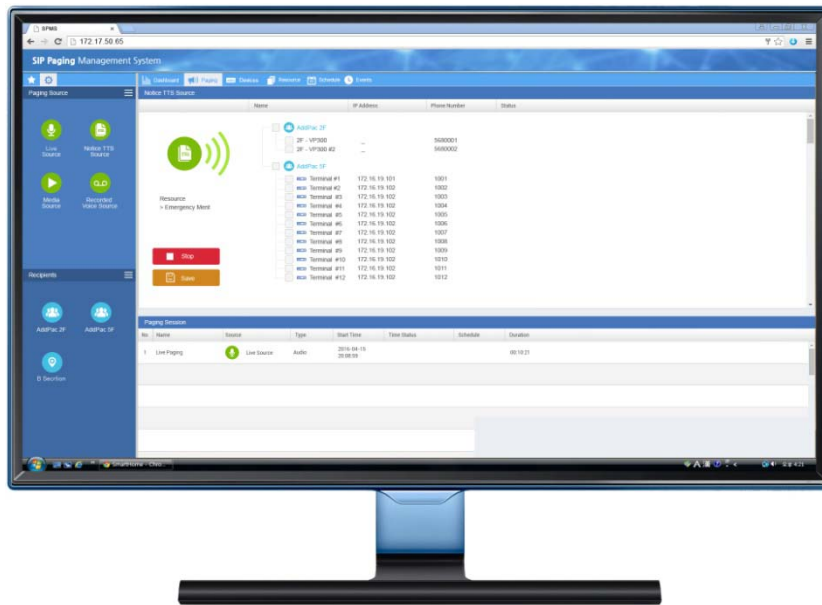


# AP-SPMS (SIP Paging Management Software)



**AddPac**

**AddPac Technology**

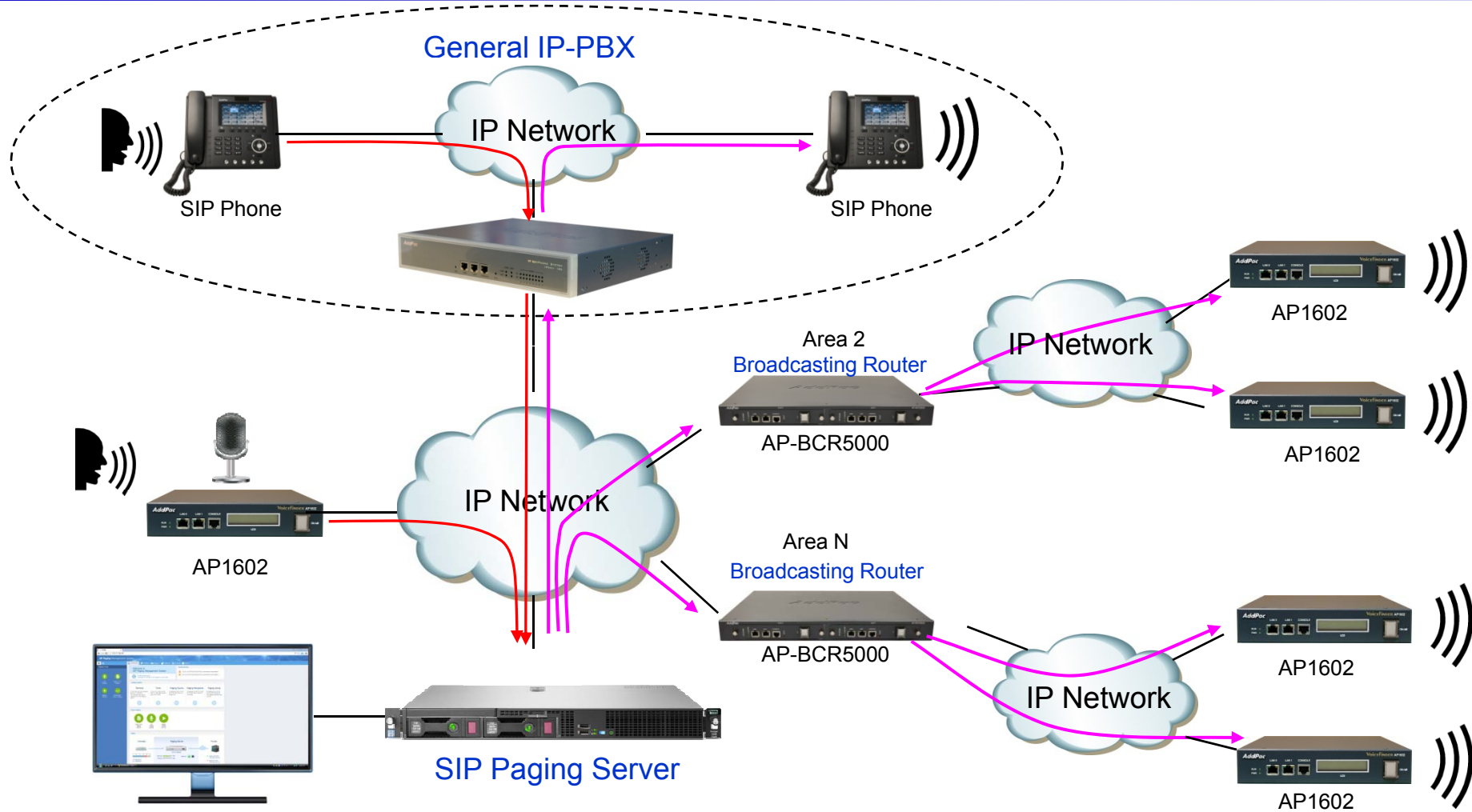
2015, Sales and Marketing

[www.addpac.com](http://www.addpac.com)

# Contents

- SIP Paging Call Service Network Diagram
- SIP Paging Call Source
- SIP Paging Call Destination
- SIP Paging Call Scenario
- SIP Paging Management Software Overview
  - Paging Device Management
  - Paging Group Management
  - Access Authority Management
  - Real-time and Recorded Paging
  - One Click Paging
  - Scheduled Paging
  - HTTP API Paging
  - TTS Paging
  - SMS Paging

# SIP Paging Call Service Network Diagram



AP-SPMS : SIP Paging Management Software

# SIP Paging Call Sources

- Real-Time Paging
  - IP Phones or Terminals Registered to Paging Server
  - IP Phones Registered to IP PBX
  - PSTN Phones via VoIP Gateway
  - Mobile Phones via VoIP Gateway or Mobile Gateway
- Recorded Paging
  - Record from IP Phone, PSTN Phone, Mobile Phone
  - Record from TTS
  - Any Wave Audio File
- HTTP API Paging
  - 3<sup>rd</sup> Party System via Restful HTTP API
- TTS Paging

# SIP Paging Call Destinations

- IP Phones or Terminals Registered to Paging Server
- IP Phones Registered to IP PBX
- PSTN Phones via VoIP Gateway
- Mobile Phones via VoIP Gateway or Mobile Gateway
- SMS via Mobile Gateway
- General PC based SIP Phone

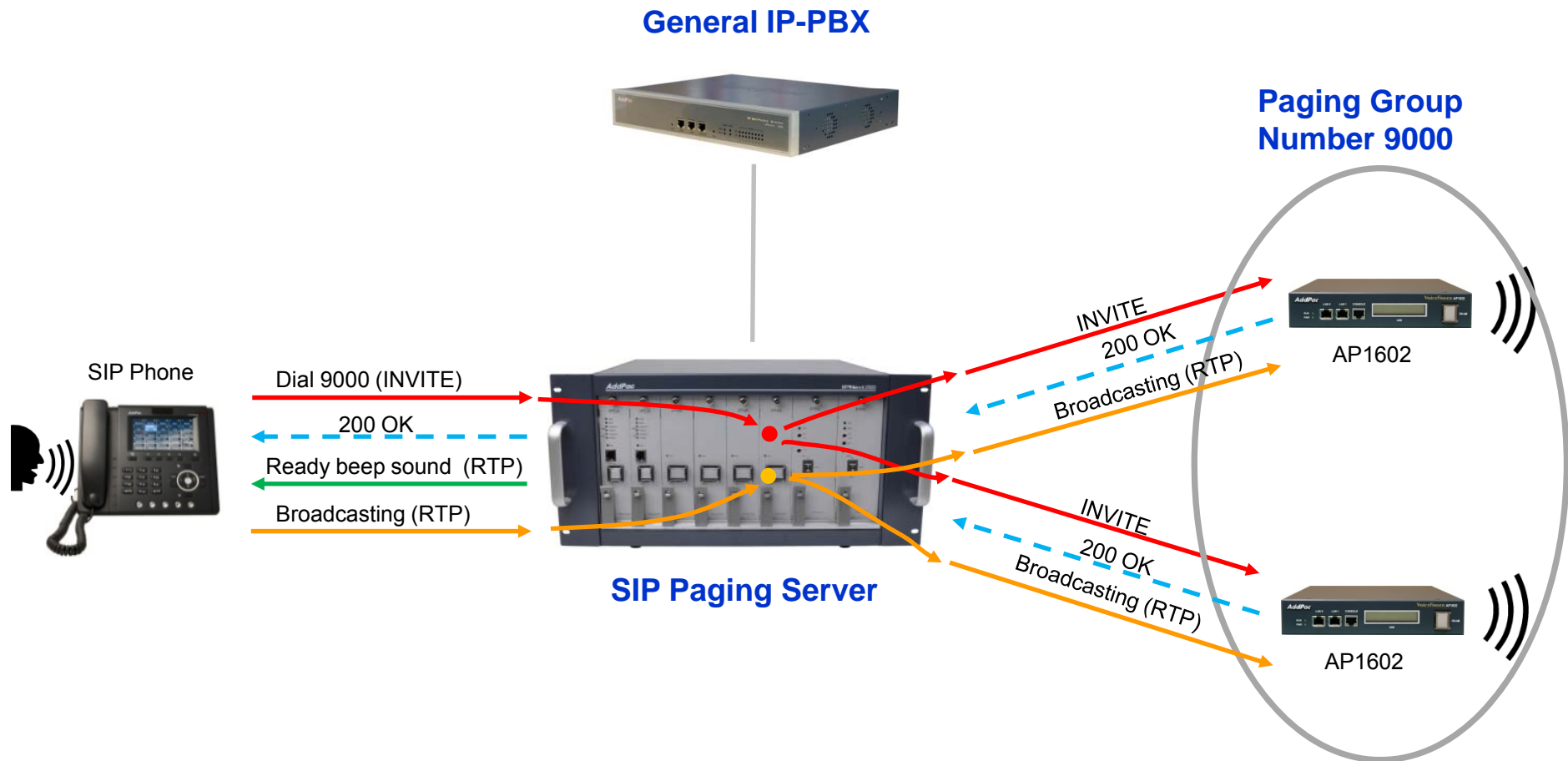


# Paging Scenarios

# Paging Call Scenarios

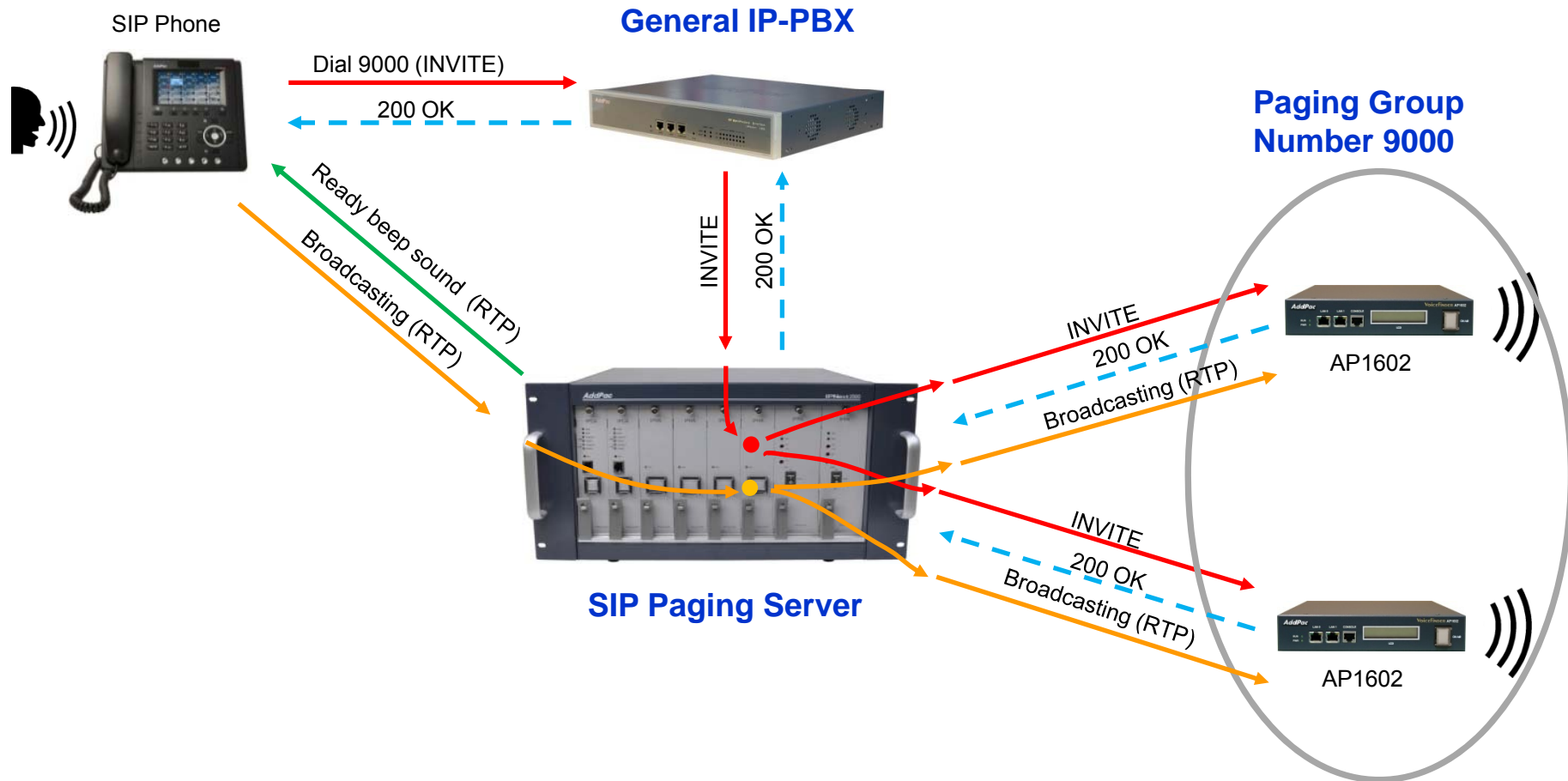
- SIP Phone Initiated Real-Time Paging
- SIP Phone Initiated Real-Time Paging via PBX
- SIP Phone Initiated Real-Time Paging to PBX
- Paging to and from PSTN/Mobile Network
- Web Controller Initiated Real-Time Paging
- Add-hoc Paging with IVR
- Recorded Paging with Simultaneous Casting
- Recorded Paging with Individual Casting
- TTS (Text to Speech) Paging
- Audio and SMS Paging by HTTP API
- Scheduled Paging

# SIP Phone Initiated Real-Time Paging

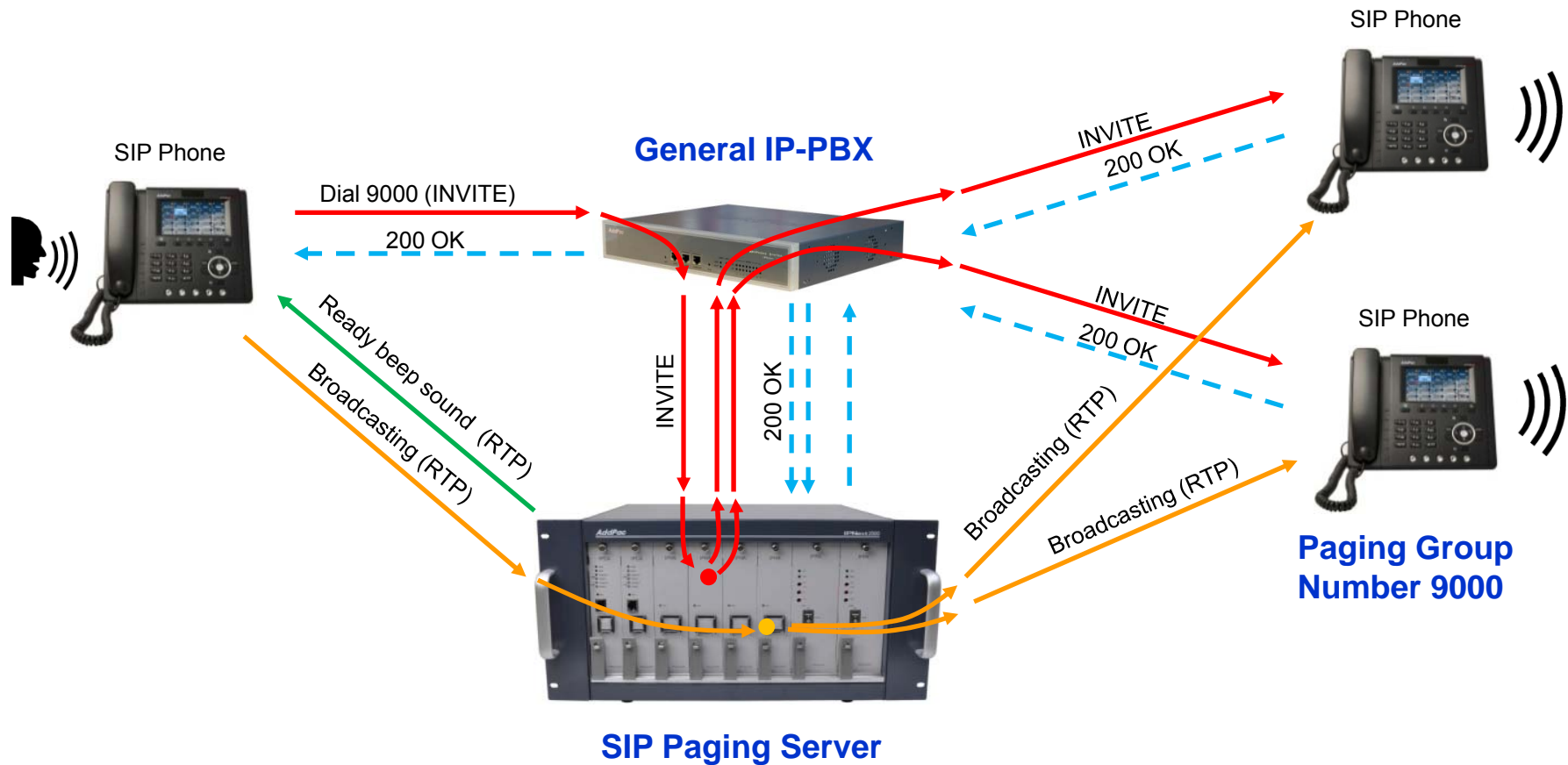




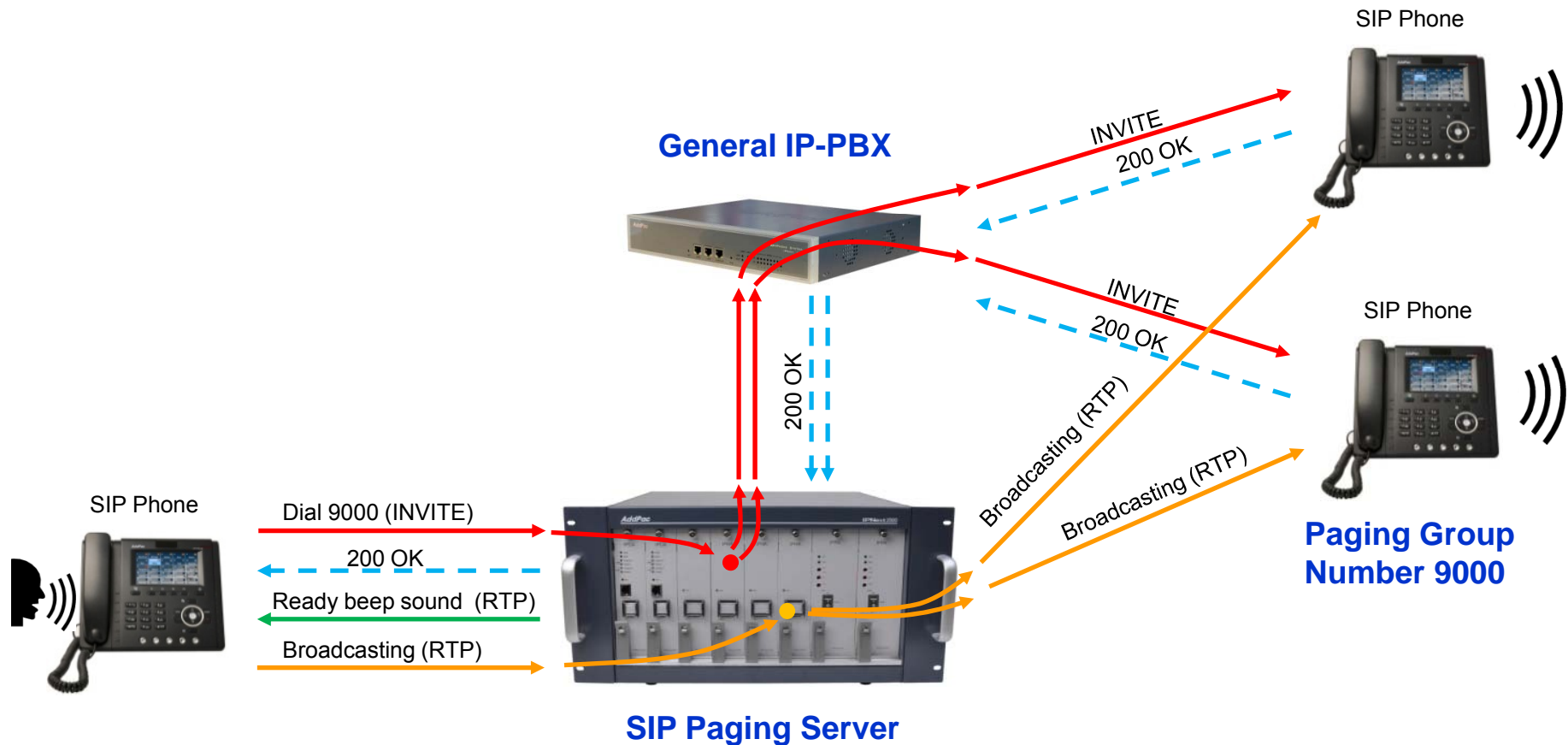
# SIP Phone Initiated Real-Time Paging via PBX



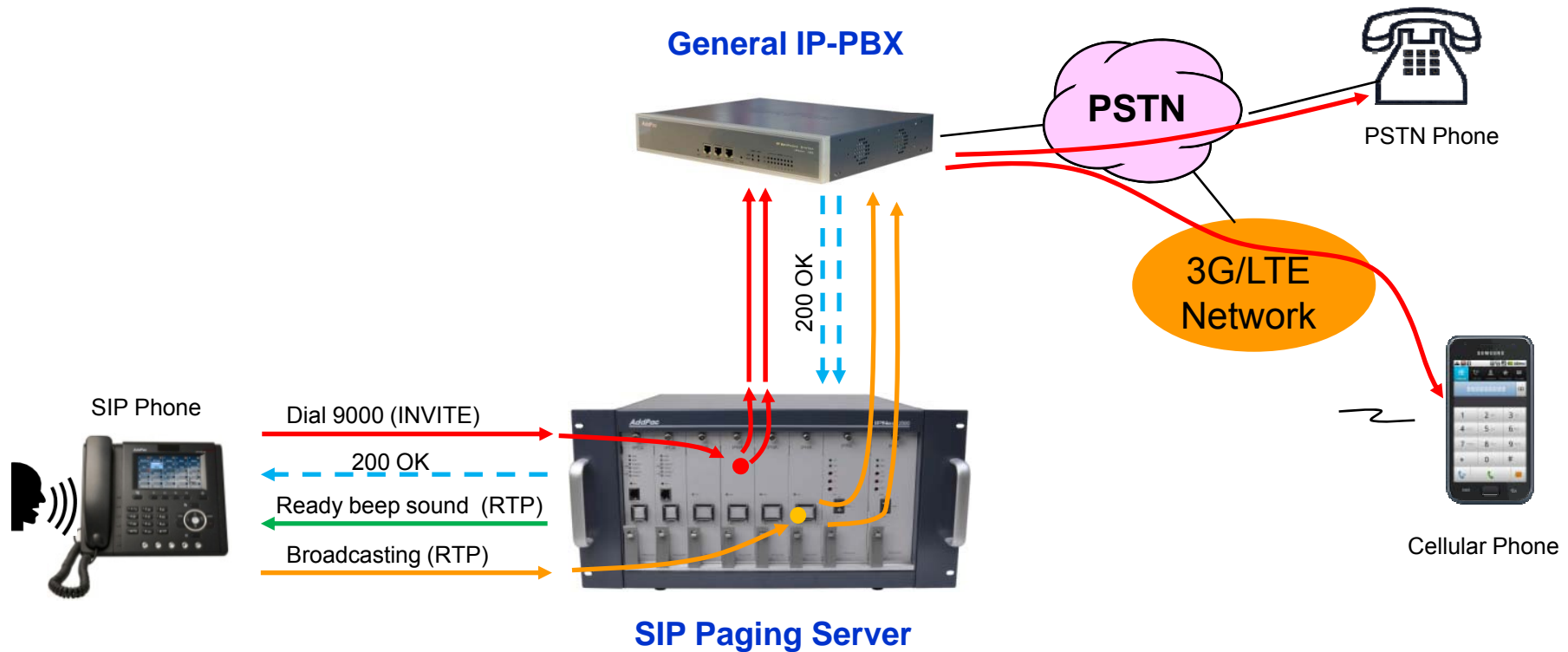
# SIP Phone Initiated Real-Time Paging to PBX



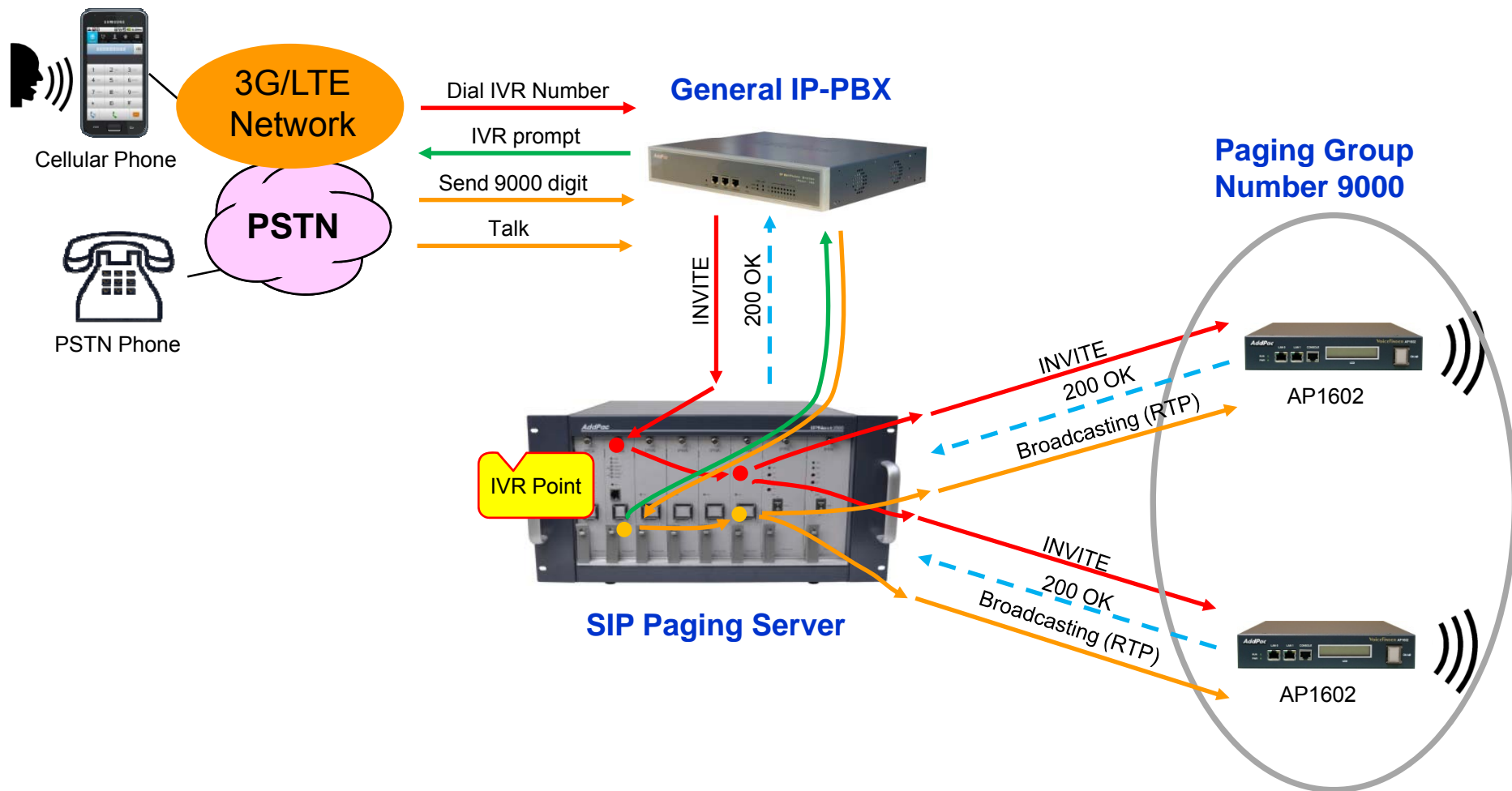
# SIP Phone Initiated Real-Time Paging to PBX



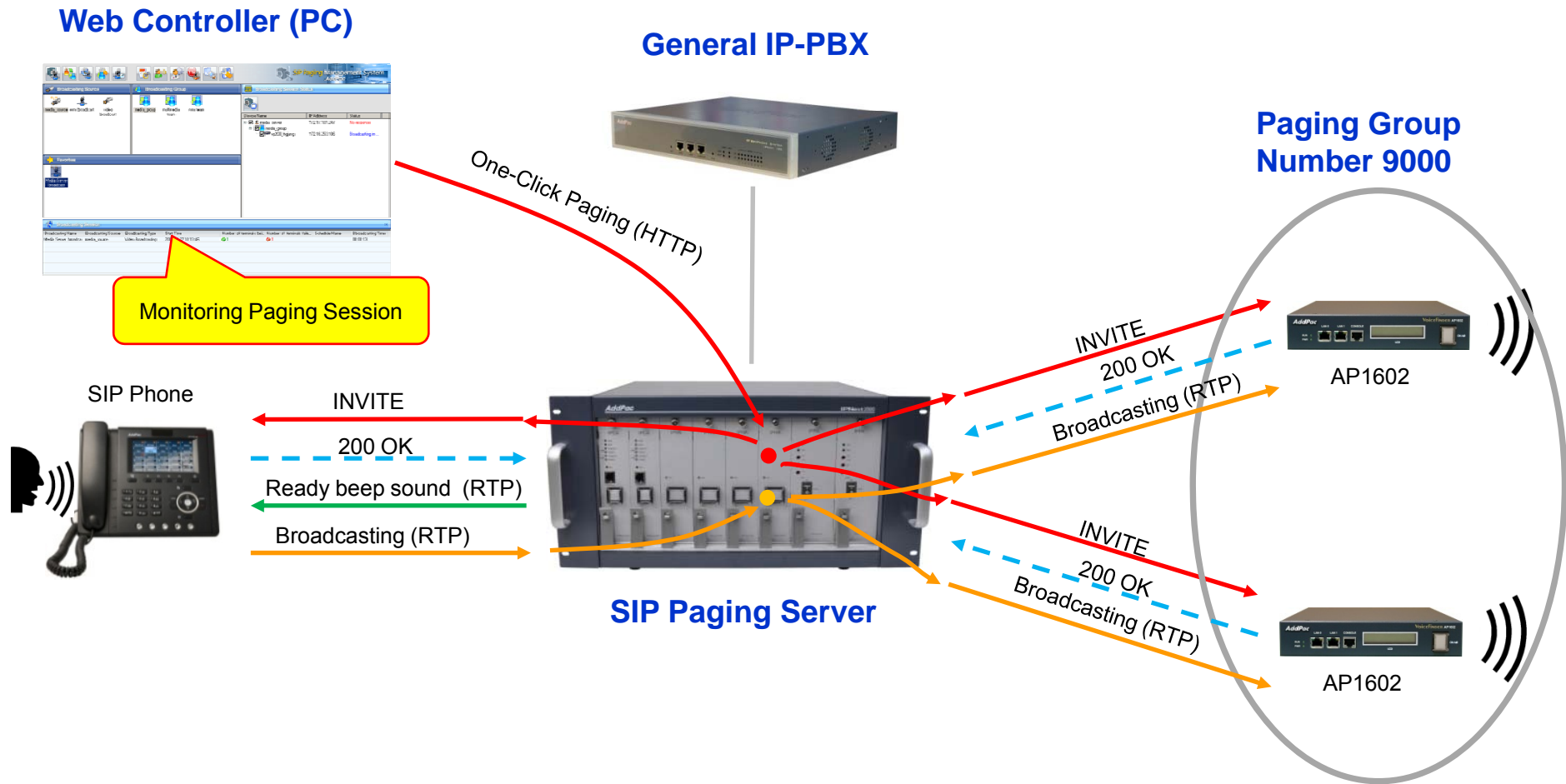
# SIP Phone Initiated Real-Time Paging to PSTN and Mobile Network



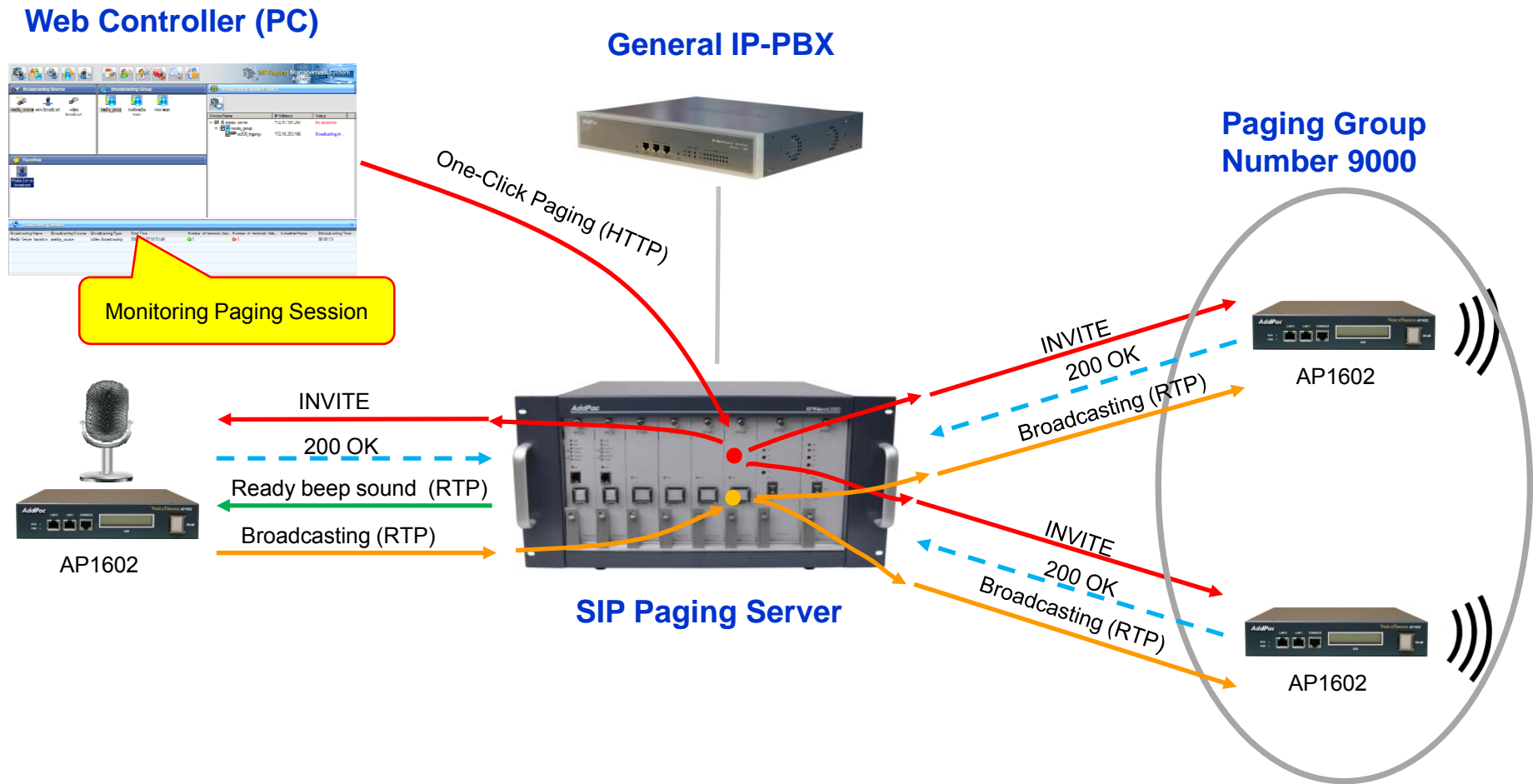
# PSTN or Mobile Network Initiated Paging with IVR



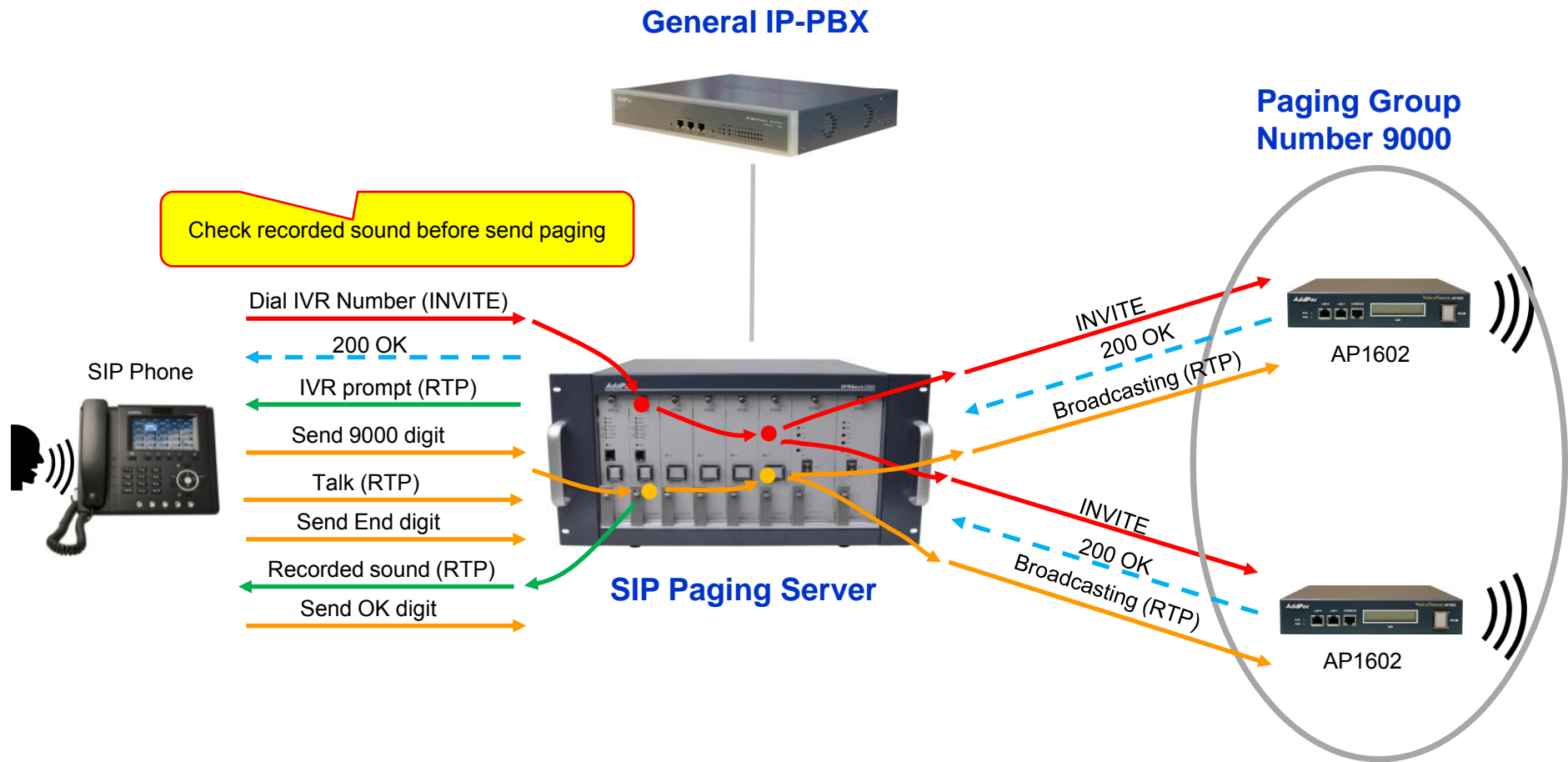
# Web Controller Initiated Real-Time Paging (1)



# Web Controller Initiated Real-Time Paging (2)



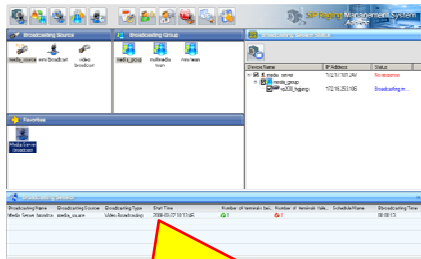
# Add-hoc Paging with IVR





# Recorded Paging with Simultaneous Casting

## Web Controller (PC)



Recorded or uploaded sound file

## General IP-PBX



Start Paging (HTTP)

## Paging Group Number 9000



## SIP Paging Server

Send RTP simultaneously



AP1602

INVITE

200 OK

Broadcasting (RTP)



AP1602

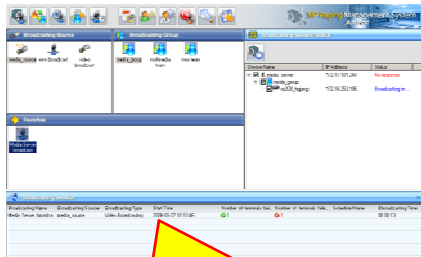
INVITE

200 OK

Broadcasting (RTP)

# Recorded Paging with Individual Casting

## Web Controller (PC)



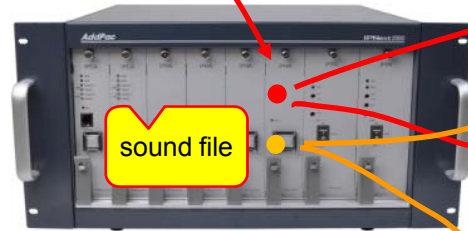
Recorded or uploaded sound file

## General IP-PBX



Start Paging (HTTP)

## Paging Group Number 9000



## SIP Paging Server

Send RTP individually



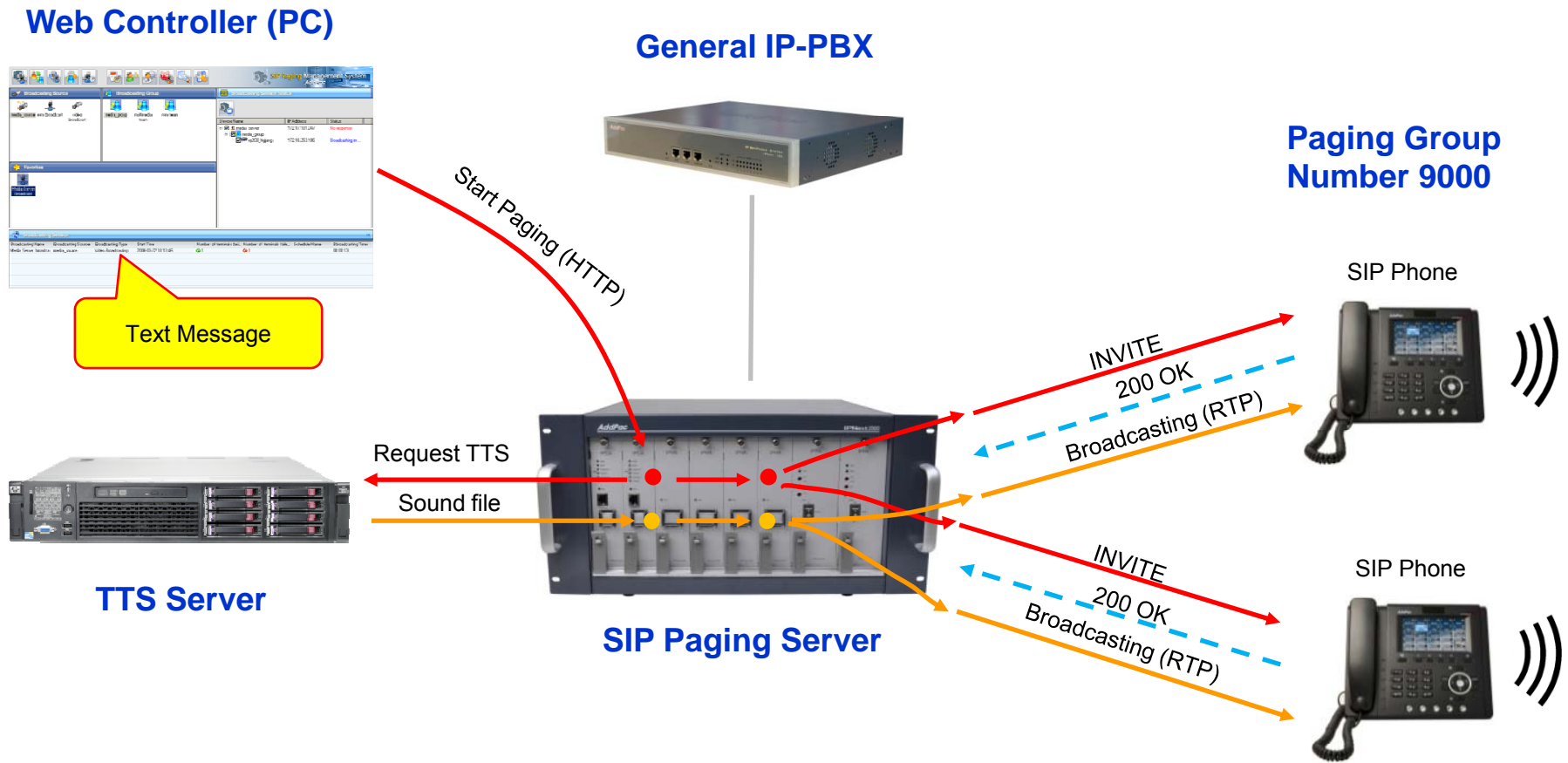
Accept call individually



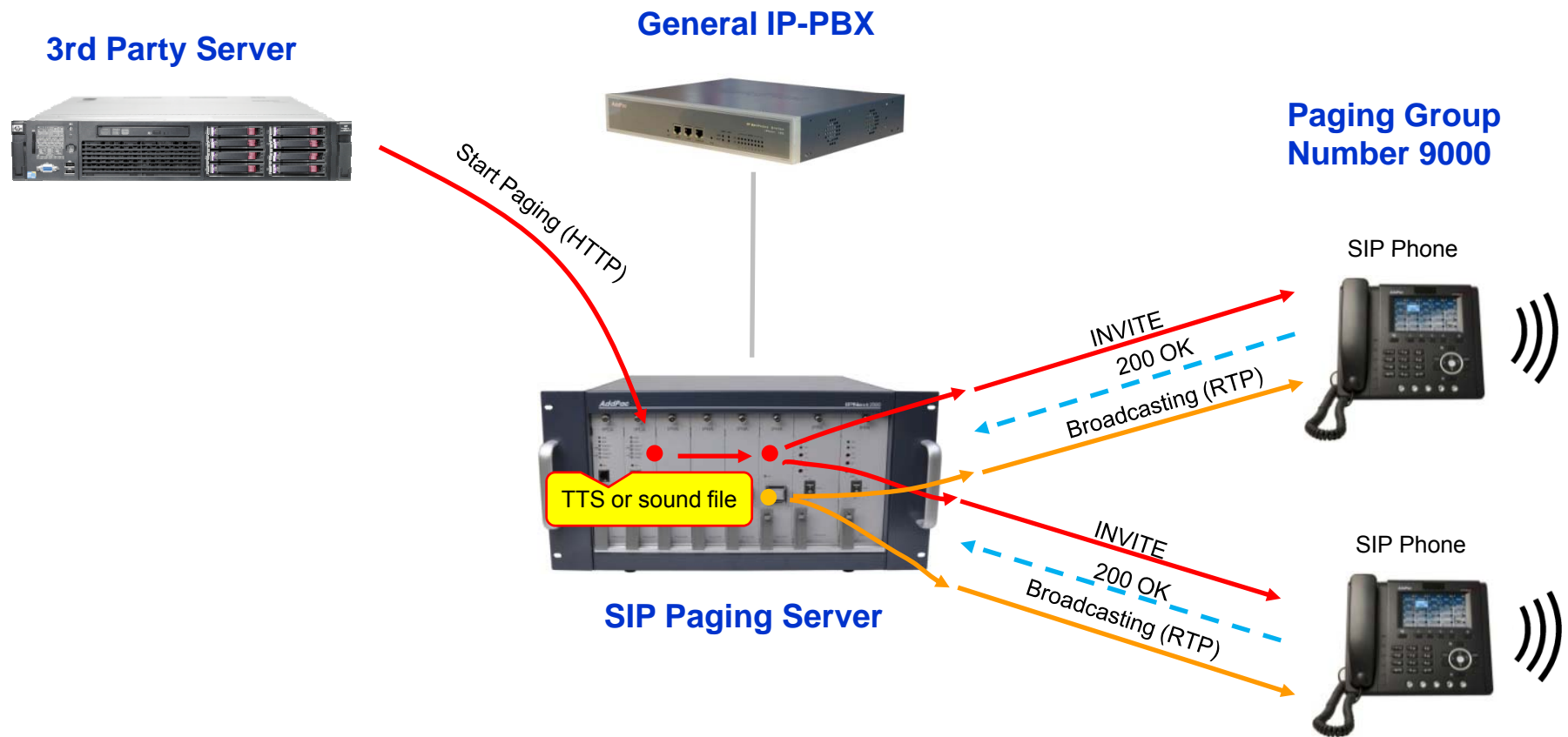
INVITE  
200 OK  
Broadcasting (RTP)

INVITE  
200 OK  
Broadcasting (RTP)

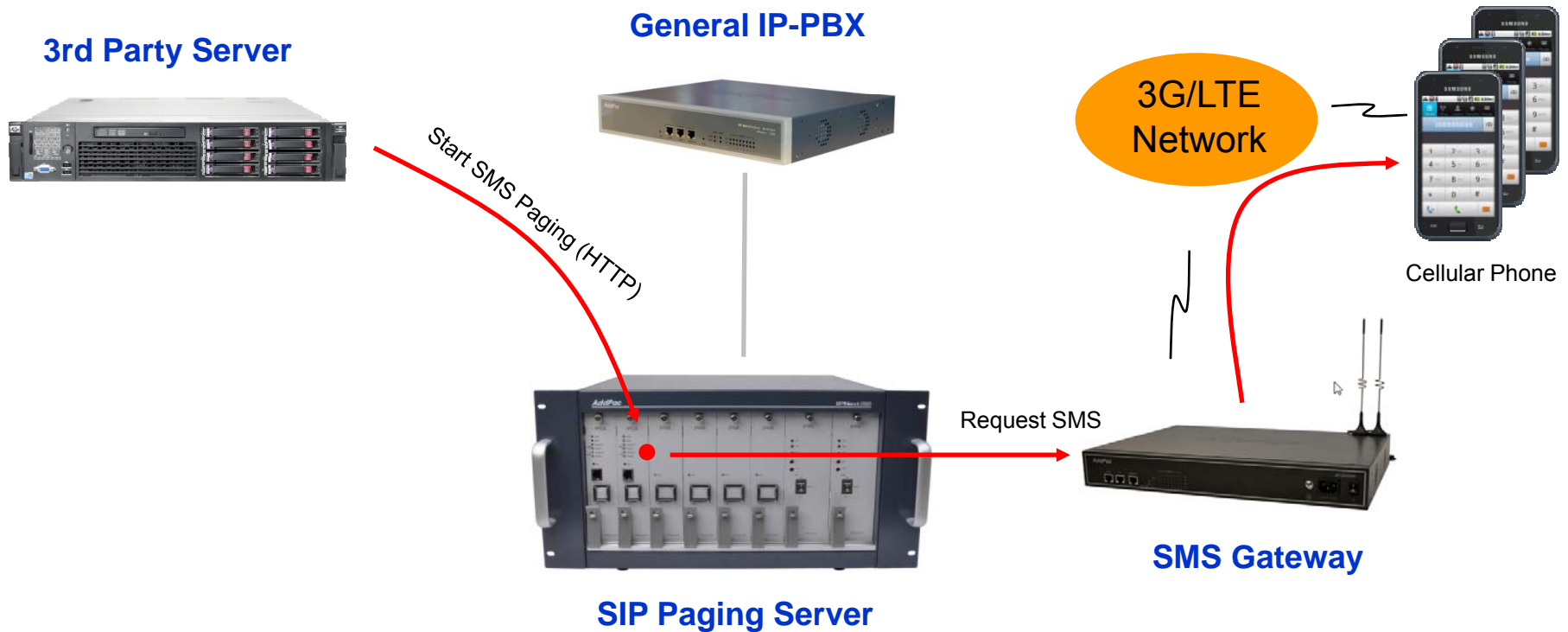
# TTS (Text to Speech) Paging



# Audio Paging by HTTP API

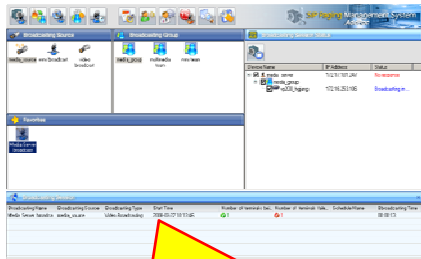


# SMS Paging by HTTP API



# Scheduled Paging

## Web Controller (PC)



Make a schedule

## General IP-PBX



## SIP Paging Server

## Paging Group Number 9000



AP1602



AP1602

Add a Schedule (HTTP)

INVITE

200 OK

Broadcasting (RTP)

INVITE

200 OK

Broadcasting (RTP)



# SIP Paging Management Software

# SIP Paging Management System GUI Initial Screen

**SIP Paging Management System**

Dashboard | Paging | Devices | Resource | Schedule | Events

**Paging Group**

- Live Paging
- Notice TTS Paging
- Media Paging
- Recorded Voice Paging

**Welcome to SIP Paging Management System**

Root (Administrator)  
Last login at June 06 10:37:20 AM (172.16.63.150)

**Unread Alarms**

- 12:34:10 AP1602 #23(2918) connection terminated.
- 10:12:45 AP1602 #25(2915) connection terminated.

**Getting Started**

- Terminal**  
A terminal can be a paging source or recipient. The internal terminal is registered to this paging server.
- Trunk**  
A trunk is a call routing path to other SIP servers such as IP-PBX.
- Paging Source**  
A paging source could be a live terminal or a media file.
- Paging Recipients**  
A paging recipients could be a terminal or a set of terminals.
- Paging Group**  
A paging group has a source and recipients with paging settings and number.

**Active Paging**

- Notice TTS paging (05:12)
- Live Paging (00:38)
- Media Paging (07:12)

**Status**

- Terminals**  
Registered: 0, Unregistered: 0
- Paging Server**  
172.17.50.65  
Memory: 80%, Storage: 60%, Network: [Status]
- Trunks**  
External IP-PBX: 192.168.100.102  
External Trunk: 192.168.100.102

Favorite Paging Group with Source

Active Paging Sessions





# Paging Group Management

The screenshot displays the SIP Paging Management System interface. The left sidebar contains options for 'Paging Source' (Live Source, Notice TTS Source, Media Source, Recorded Voice Source) and 'Recipients' (AddPac 2F, AddPac 5F, B Section). The main area shows a 'Notice TTS Source' configuration with a tree view of paging groups. A 'Paging Organizer' callout points to the tree view. Below the tree view are 'Stop' and 'Save' buttons. At the bottom, a 'Paging Session' table shows a recent session.

Name	IP Address	Phone Number	Status
<b>AddPac 2F</b>			
2F - VP300	-	5680001	
2F - VP300 #2	-	5680002	
<b>AddPac 5F</b>			
Terminal #1	172.16.19.101	1001	
Terminal #2	172.16.19.102	1002	
Terminal #3	172.16.19.102	1003	
Terminal #4	172.16.19.102	1004	
Terminal #5	172.16.19.102	1005	
Terminal #6	172.16.19.102	1006	
Terminal #7	172.16.19.102	1007	
Terminal #8	172.16.19.102	1008	
Terminal #9	172.16.19.102	1009	
Terminal #10	172.16.19.102	1010	
Terminal #11	172.16.19.102	1011	
Terminal #12	172.16.19.102	1012	

No	Name	Source	Type	Start Time	Time Status	Schedule	Duration
1	Live Paging	Live Source	Audio	2016-04-15 20:08:59			00:10:21

Paging source

Paging Groups

Paging Organizer



# Scheduled Paging Management

The screenshot displays the 'SIP Paging Management System' interface. At the top, there is a navigation bar with icons for Dashboard, Paging, Devices, Resource, Schedule (selected), and Events. Below this is a sub-menu with 'Calendar' and 'List'. The main area shows a calendar for April 2016, with navigation buttons for Day, Week, and Month. The calendar grid shows dates from March 27 to April 30. A yellow event is scheduled for April 20th at 2:44 pm.

Sun	Mon	Tue	Wed	Thu	Fri	Sat
Mar 27, 2016	28	29	30	31	Apr 1	2
3	4	5	6	7	8	9
10	11	12	13	14	15	16
17	18	19	20 Today 2:44 pm	22	23	
24	25	26	27	28	29	30





# Thank you!

**AddPac Technology Co., Ltd.**  
Sales and Marketing

Phone +82.2.568.3848 (KOREA)

FAX +82.2.568.3847 (KOREA)

E-mail [sales@addpac.com](mailto:sales@addpac.com)