



AP-M2M200

GSM M2M Device

High Performance GSM M2M (Machine-to-Machine)
Device Solution



AddPac

AddPac Technology

Sales and Marketing

www.addpac.com

Contents

- Product Overview
- Hardware Specification
- GSM Module Specification
- APOS Technology
- Network Protocols
- Network Management
- Security Management
- Application Service
- Ordering Information



Product Overview

AP-M2M200 GSM M2M Device

- High Performance RISC & Programmable Architecture
- GSM based Network Interface
- One(1) Antenna Port & SIM Card Slot Interface
- One(1) 10/100Mbps Fast Ethernet LAN Port Interface
- RS232C (DB9) Port Interface
- RS232/RS485 Interface(Selected by Internal DIP Switch)
- Two(2) Relay Out Interface
- Analog Voltage or Current Interface (Selected by Internal DIP Switch)
- Pulse or Alarm Input Interface (Selected by Internal DIP Switch)
- DC12V External Power Supply, Battery Input Interface (DC12V)
- Powerful Network Protocols (PPPoE, DHCP, Static Routing, etc)
- Firmware Upgradeable Architecture
- Smart Web Manager
- Smart NMS for Large Scale Deployment
- Light and Compact Design with External Power Supply

Product Highlights

AP-M2M200 GSM M2M Device

Powerful GSM based M2M Device

LAN to GSM GPRS Data Service
RS232C to GSM GPRS Data Service

Light and Compact Design

Analog Voltage/Current
Pulse/ Alarm interface

High Performance RISC
Computing Power

Two(2) Relay Out
Interface Port

Broadband IP Networking
With a 10/100Mbps
Fast Ethernet

APOS™ Technology
Firmware Upgradeable Architecture

Smart NMS Large Scale GSM
based Management Support

Powerful Network Protocol
Support

Powerful Trouble Shooting &
Debugging Feature Support

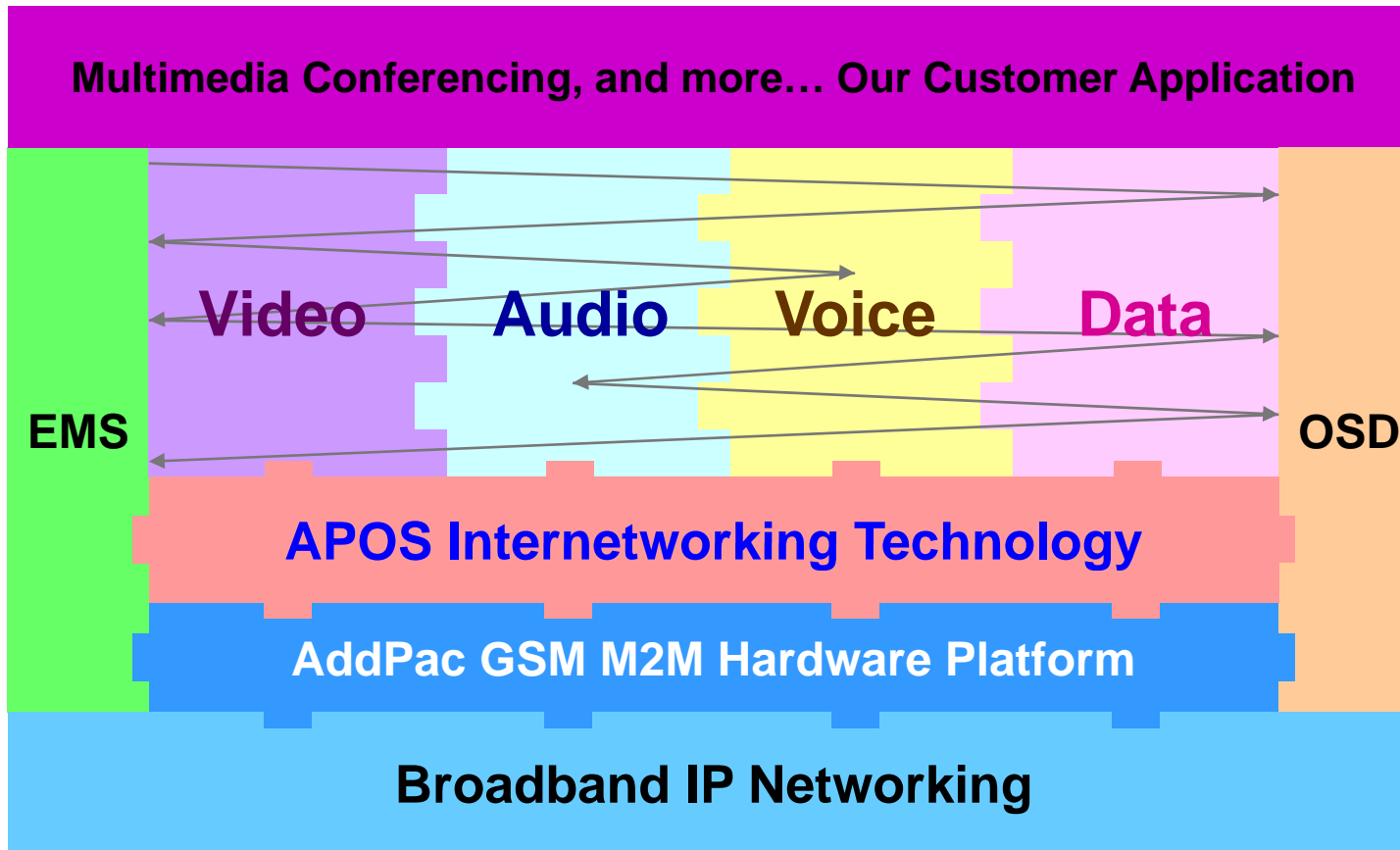
One(1) Antenna Port
& SIM Card Slots

www.addpac.com

AddPac

APOS Technology

AP-M2M200 GSM M2M Device



- APOS : AddPac Internetworking Operating System
- OSD : On- Screen Display
- EMS : Element Management System

Hardware Specification

AP-M2M200 GSM M2M Device

RISC
CPU

High-end
DSP

- RISC Microprocessor Computing Power
- GSM GPRS Data Network Interface
- Cellular Network Interface
 - 1-Port SIM Card Slot
 - 1-Port GSM Antenna Interface
- Network Interface
 - One(1) 10/100Mbps Fast Ethernet LAN Interface (RJ45)
 - One(1) RS232C Interface (DB9)
- Terminal Block Interface
 - RS232 or RS485 Interface
 - Analog Voltage or Current Input Interface (1N1, IN2)
 - Pulse or Alarm Input Interface (IN1)
 - Two(2) Relay Out Interface
- DC12V External Power Supply, Battery Power Supply Input

Hardware Specification

AP-M2M200 GSM M2M Device

RISC
CPU

High-end
DSP

Network interface Configuration

Front Side



AddPac

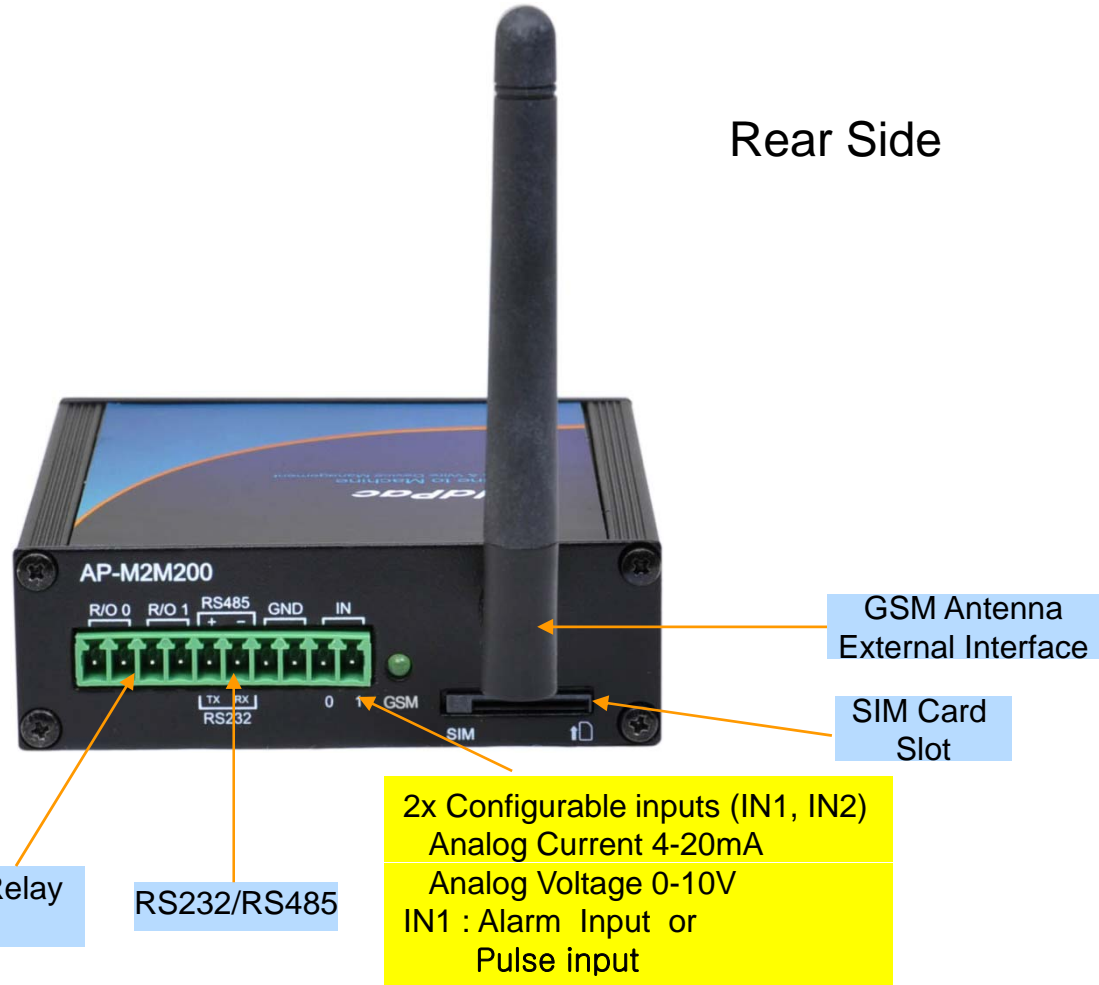
Hardware Specification

AP-M2M200 GSM M2M Device

RISC
CPU

High-end
DSP

Network interface Configuration

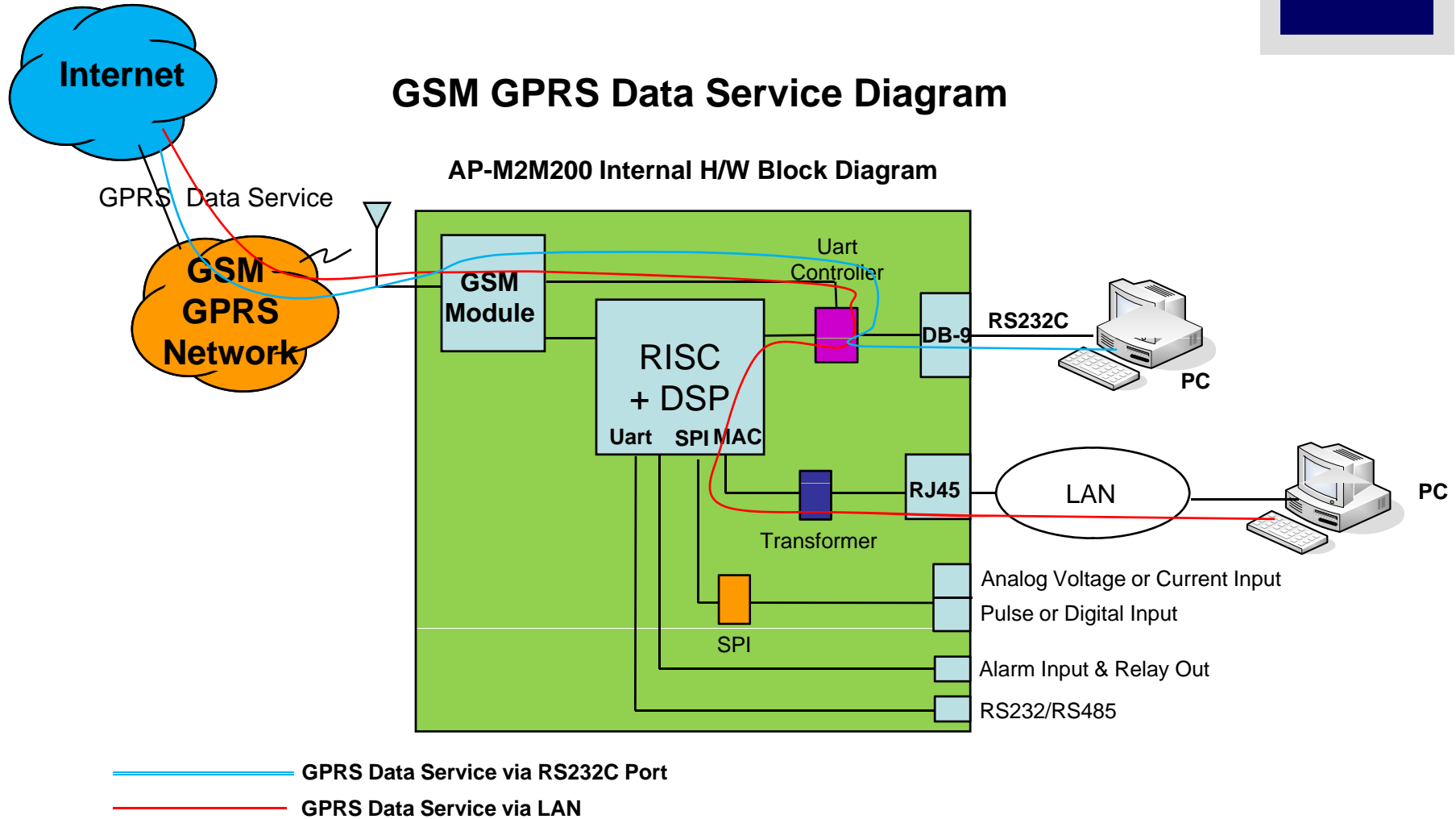


Hardware Specification

AP-M2M200 GSM M2M Device

RISC
CPU

High-end
DSP



Hardware Specification

AP-M2M200 GSM M2M Device

RISC
CPU

High-end
DSP

AP-M2M200 GSM M2M Device	Basic Specifications
GSM Antenna Interface	External GSM Antenna
SIM Card Slot	GSM SIM Card Slot
Ethernet Interface	1-Port 10/100Mbps Ethernet Interface(RJ-45)
Serial Interface	1-Port RS232C Serial Interface Interface(DB-9)
Flash Memory	4Mbyte High-speed Flash Memory
Base Memory	32Mbyte High-speed SDRAM
I/O Interface	Analog Voltage (0 ~10V) (IN1, IN2)
	Analog Current (4~20mA) (IN1, IN2)
	Pulse Input or Digital Input (IN1)
	RS232/RS485 Interface
Power Requirement	Power Supply Adaptor / VAC 110~220V, 50/60Hz, 12V/1A
Operating Temperature	0°C ~ 45°C (32 °F ~ 122°F)
Storage Temperature	-40°C ~ 85°C (-40°C ~ 185°F)
Relative Humidity	5% ~ 95% (Non-condensing)
Dimension	28mm x 86mm x 95mm (H x W x D)
Weight (Kg)	0.32Kg

DIP Switch Hardware Specification

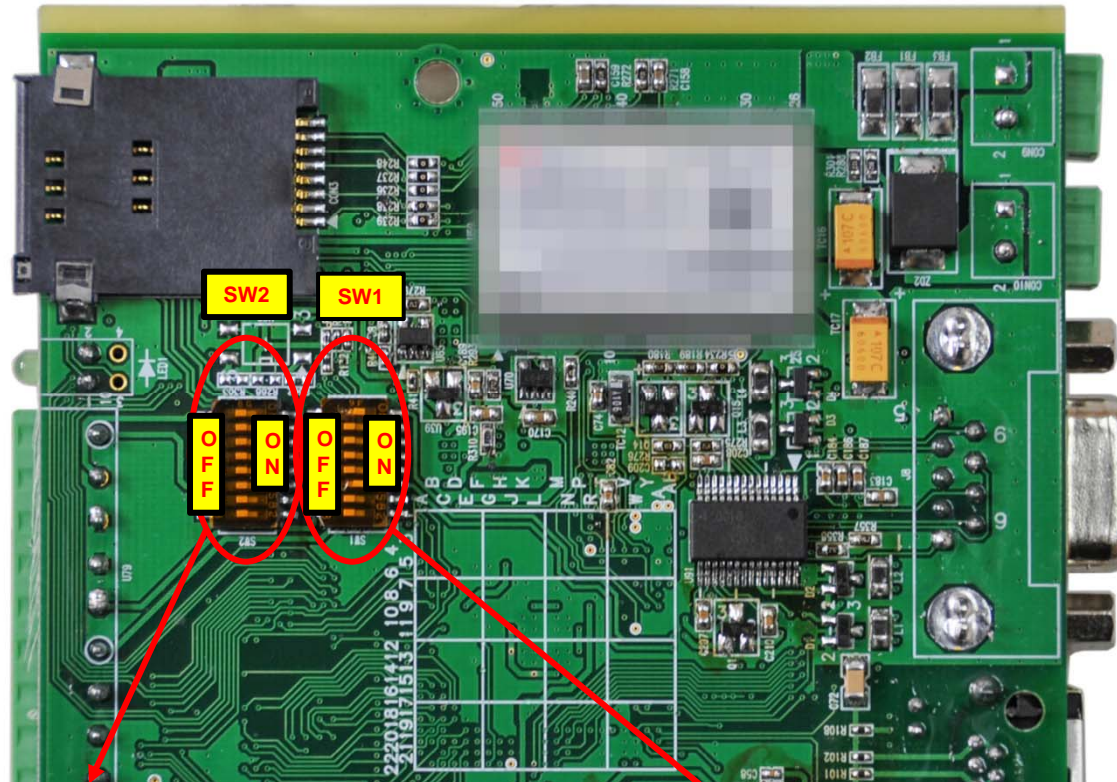
AP-M2M200 GSM M2M Device

RISC
CPU

High-end
DSP

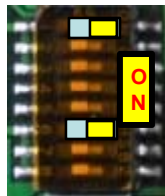
2x Configurable inputs (IN1, IN2)
Analog 4-20mA
Analog 0-10V

IN1 : Digital Input or Pulse input
=> CLI Configuration

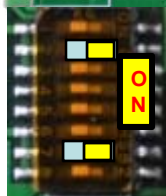


Current/Voltage & Pulse/Digital Input Switch

RS232/RS485 Dip Switch



Current



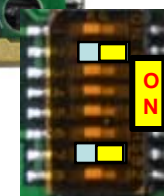
Voltage



Pulse or
Alarm Input



RS232



RS485

AddPac

www.addpac.com

GSM Module Specification

AP-M2M200 GSM M2M Device

- Bearers : GSM + GPRS class 10
- Quad-Band EGSM 850/900/1800/1900MHz
- Normal Sensitivity
 - 850MHz Rx -104 dBm
 - 900MHz Rx -104 dBm
 - 1800MHz Rx -102 dBm
 - 1900MHz Rx -102 dBm
- Tx Performances
 - 850MHz Tx +33 dBm
 - 900MHz Tx +33 dBm
 - 1800MHz Tx +30 dBm
 - 1900MHz Tx +30 dBm
- Power Consumption
 - 17 uA Sleep Mode, 1.7mA Idle Mode, 400mA GPRS class10 (33 dBm)
- Codec
 - FR-EFR-HR-AMR

Network Protocols

AP-M2M200 GSM M2M Device

Basic Network Protocols

- ARP, IPv4, TCP, UDP, ICMP, SCTP, IGMP, MLD

Routing Protocol

- IPv4 : Static, Option : RIP v2, OSPF

Service Protocol

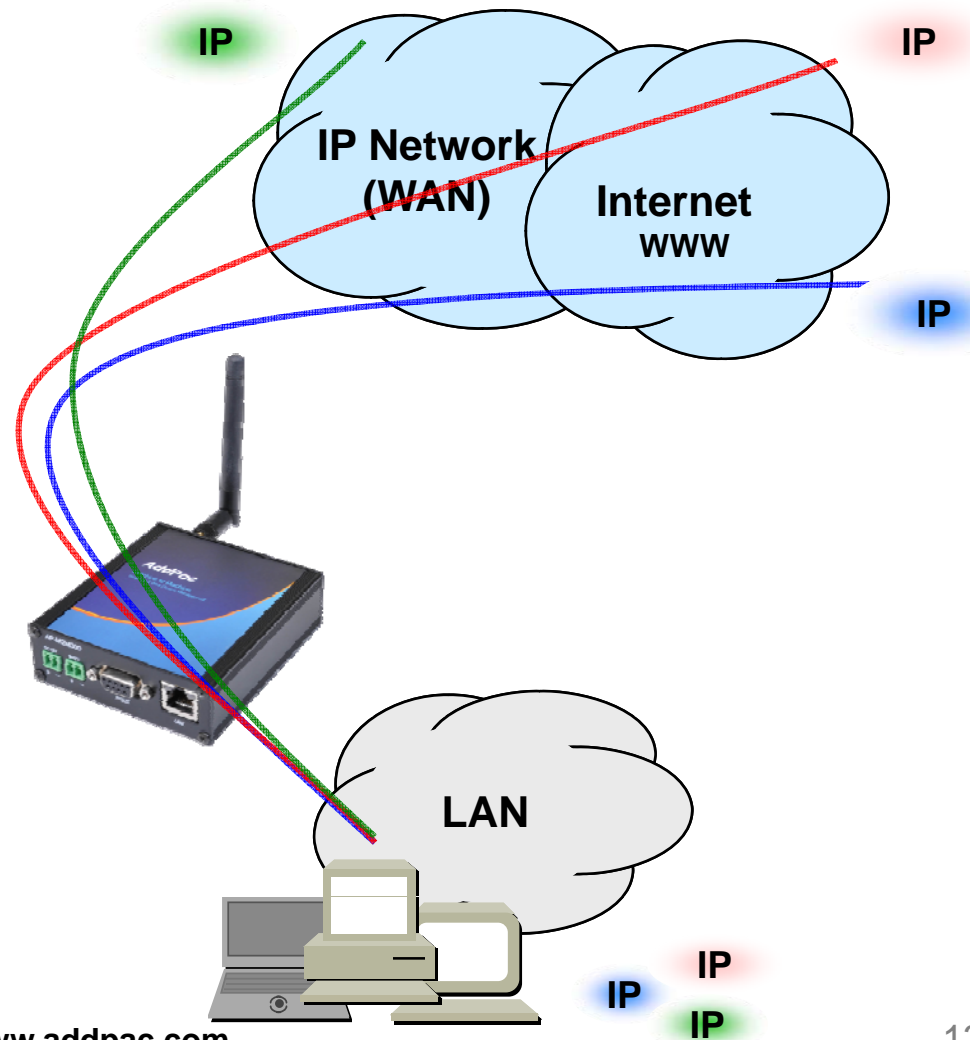
- FTP, Telnet, TFTP, DHCP Server/Relay, SNMP Server
- CDP (Cisco Discovery Protocol)
- DNS Resolver, DDNS(nsupdate)
- Bridge
- Syslog

IPv4 Address Configuration

- Fixed (Static)
- DHCP
- PPPoE

Miscellaneous

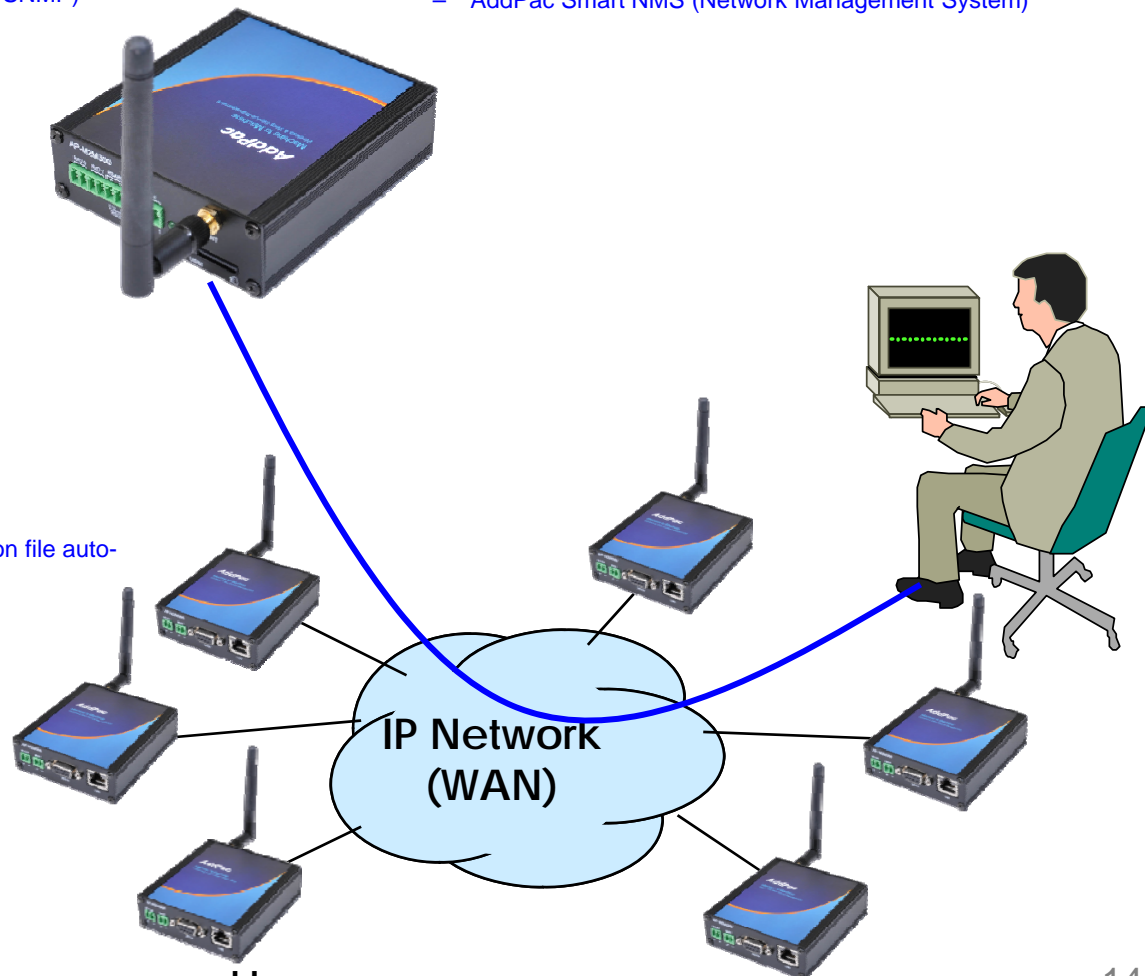
- Cisco Style CLI
- Standard & Extended IPv4 Access List
- Multi-level User Account Management
- IP accounting
- STUN Client



Network Management

AP-M2M200 GSM M2M Device

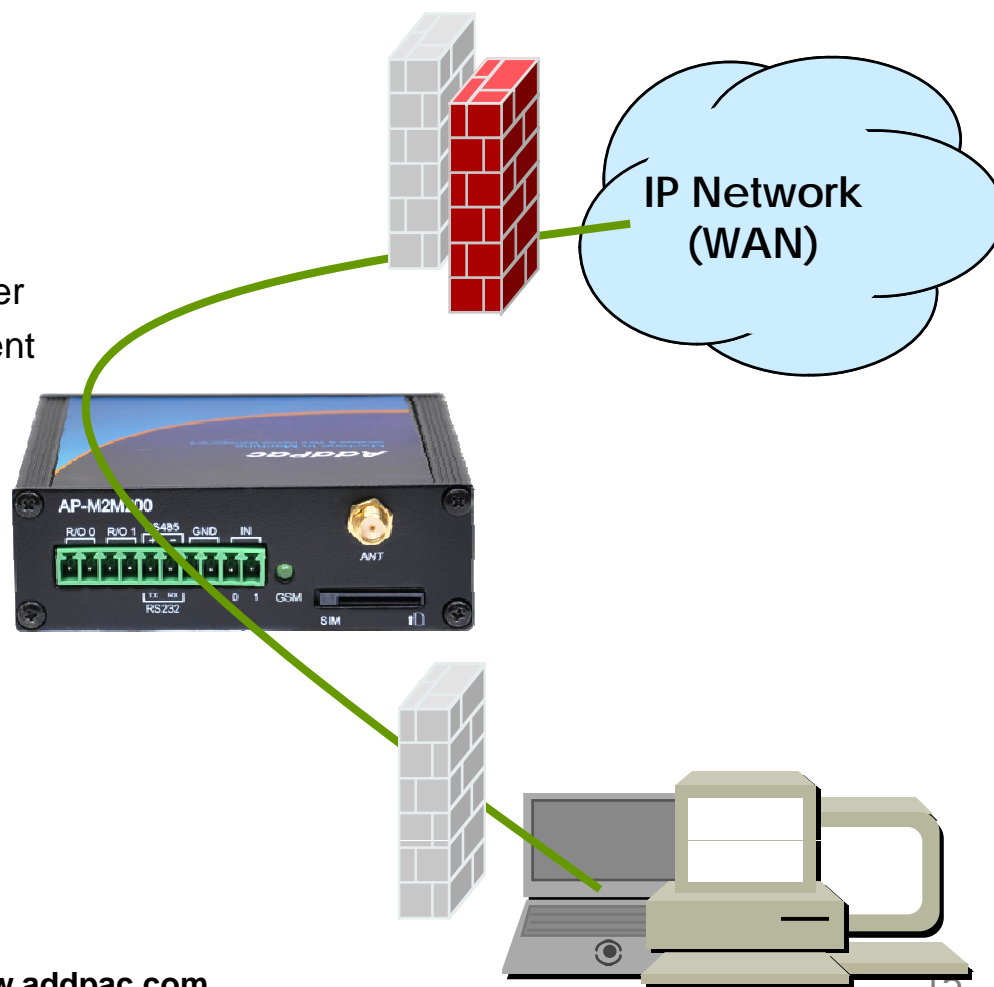
- **SNMP**
 - Standard Simple Network Management Protocol(SNMP) Agent support
 - MIB v1 and v2 Support
- **Web-based Management**
 - Smart Easy Setup
 - Standard Voice Interface
 - Standard PSTN Back-up Interface
- **Watch-dog Function**
 - Hardware, Software watch-dog services
- **Remote Management**
 - Telnet
 - Rlogin
- **Auto Upgrade Service**
 - HTTP server based APOS image and configuration file auto-upgrade support
- **Batch Job Function**
 - Text based script downloading
- **Interoperable with Smart NMS Service**
 - AddPac Smart NMS (Network Management System)



Security Management

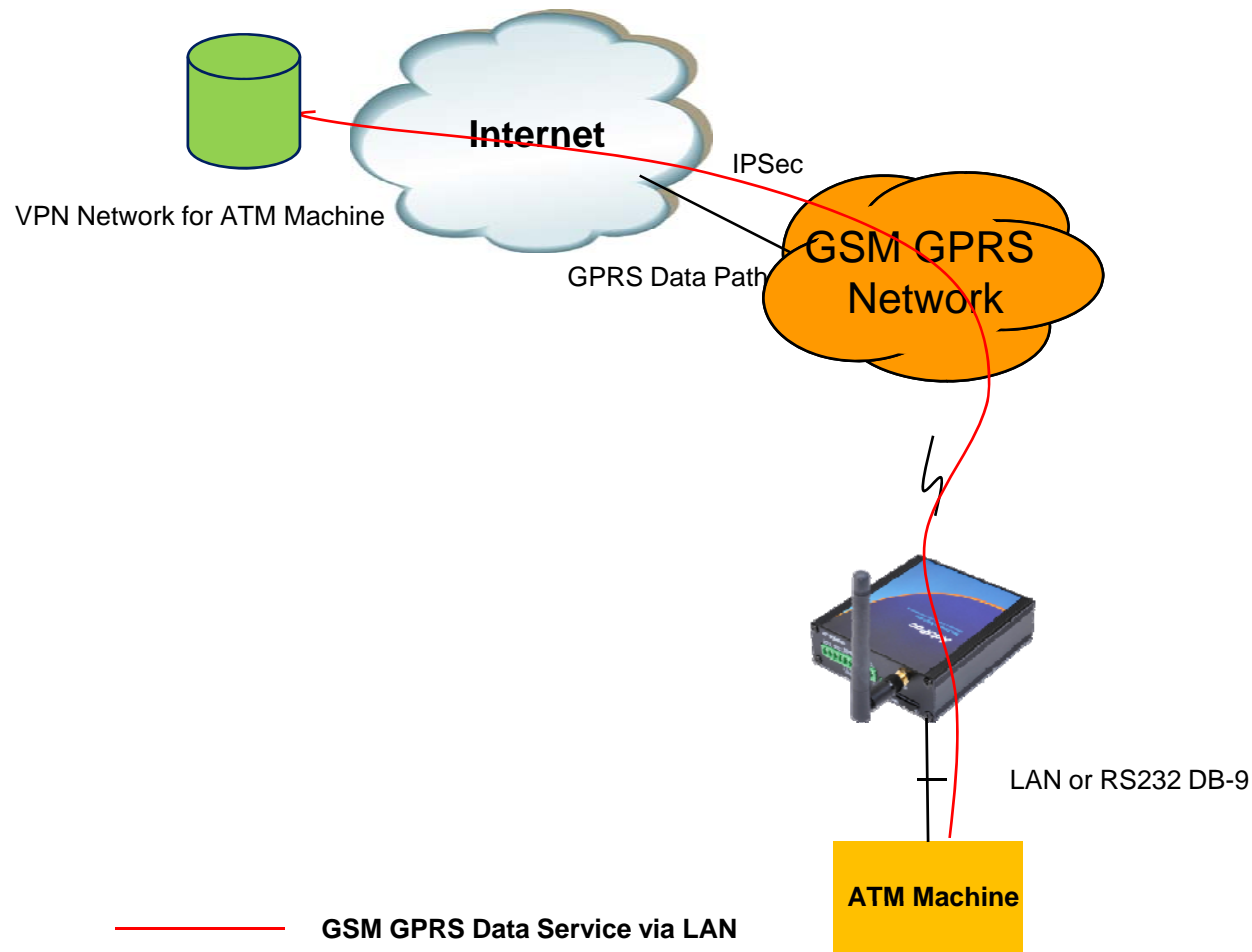
AP-M2M200 GSM M2M Device

- IP packet filtering
- IP access list
- User authentication function
 - Password Authentication Protocol (PAP)
 - Challenge Handshake Authentication Protocol (CHAP)
- Enable/Disable specific protocols
- Auto-square connect of Telnet session
- Account Management function for multi-level user
- SNMP/TELNET/FTP/HTTP/TFTP port assignment function
- SNMP/TELNET/FTP access list management
- Boot mode security checking function



M2M Application (Example : ATM Machine)

AP-M2M200 GSM M2M Device



Ordering Information

- **AP-M2M200 GSM M2M Device Hardware**
 - AP-M2M200 GSM M2M Device Main Body
 - RISC Microprocessor with High-end Programmable DSP Architecture
 - 1-Port GSM Interface (Antenna, SIM Card Slot)
 - 1-Port 10/100Mbps Fast Ethernet(RJ45)
 - 1-Port RS232C Serial Interface (DB-9)
 - I/O Interface : Relay Out, Alarm Input, Analog Voltage, Current Input
 - Including Network Cable, Antenna & Ext. Power Supply, etc.
- **Built-in APOS Internetworking Software for AP-M2M200**
- **Including 1 Year Hardware Warranty**
- **Product Documents**
 - Install and Operation Guide (PDF)
- **Pricing**
 - AddPac Technology Regional Sales Manager
 - Authorized Sales and Marketing Representatives
 - Please Contact www.addpac.com

M2M Device Series

Thank you!

AddPac Technology Co., Ltd.
Sales and Marketing

Phone +82.2.568.3848 (KOREA)

FAX +82.2.568.3847 (KOREA)

E-mail sales@addpac.com