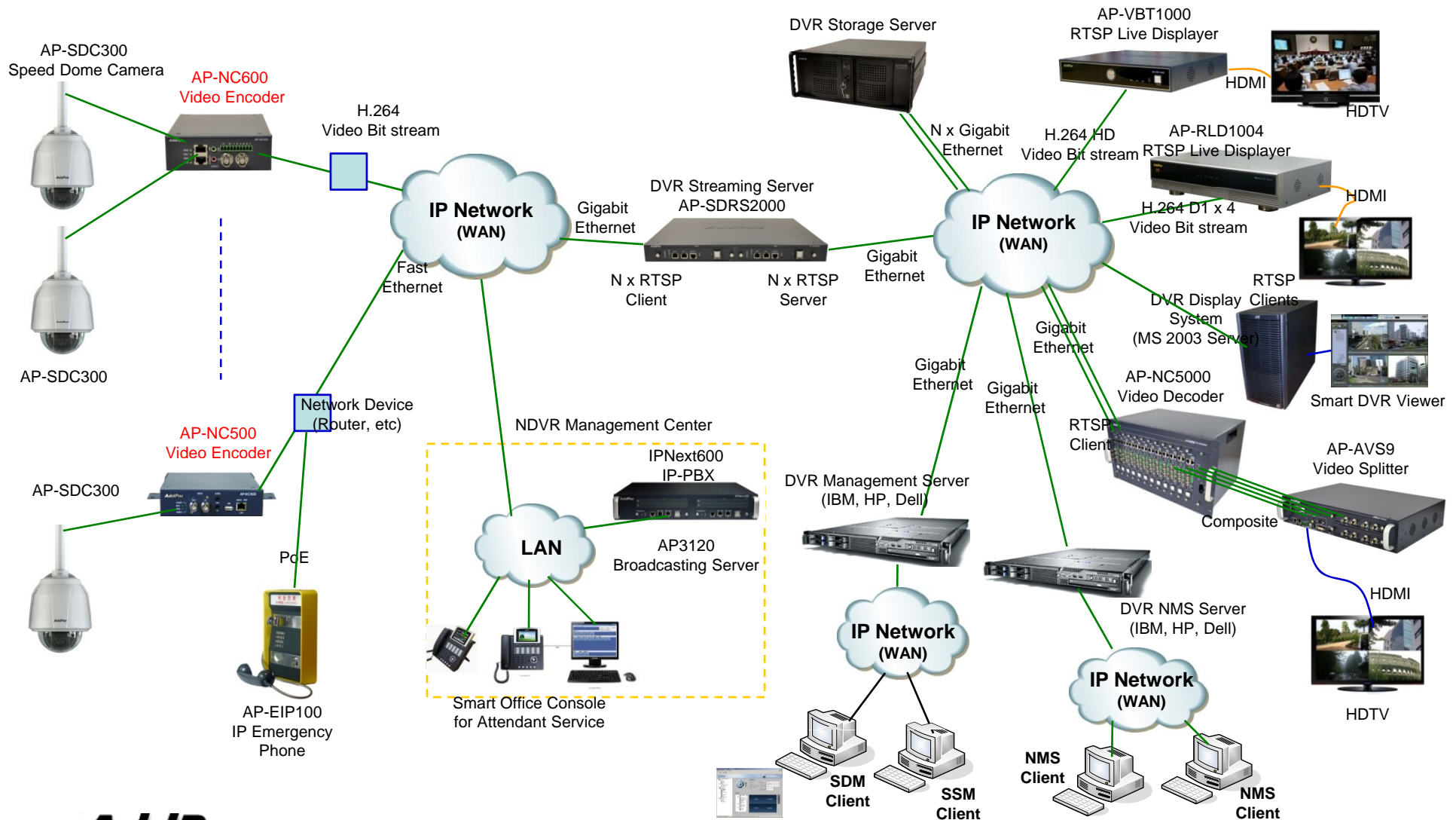


Contents

- AddPac D1 Network DVR Service Diagram
- NVR D1 Video Codec Comparison Table
- NVR D1 Video Codec Series
 - AP-NC600 (2CH)
 - AP-NC500 (1CH)



D1 Network DVR Service Diagram





D1 Video Codecs

D1 Video Codec Comparison Table

	AP-NC600	AP-NC500
Model		
Max. Video Channel	Two(2) Channel Video Input	One(1) Channel Video Input + Output
Video Codec	H.264, MPEG4	H.264 MPEG
Video Resolution	D1,CIF Dual Concurrent Codec/Channel	D1 or CIF, etc
Audio Channel	One(1) Audio In/Out Interface	One(1) Audio In/Out Interface
Transmission Protocols	RTSP, RTP	RTSP, RTP
Alarm Input & Relay	Two(2) Alarm Input, One(1) Relay-Out	Two(2) Alarm Input, One(1) Relay-Out
Camera Control	RS232, RS422 Interface	RS232C, RS422 Interface
Network Interface	One(1) 10/100Mbps Fast Ethernet	One(1) 10/100Mbps Fast Ethernet
USB Interface	N/A	One(1) USB2.0 Interface
Power Supply	External DC Power Supply	External DC Power Supply
Power Type	Power Adaptor	Power Adaptor



AP-NC600 Two(2) Channel D1 Video Codec

Main Features

AP-NC600 Two(2) Channel D1 Video Codec

- IP based Video Encoding Solution
- Dual-Channel D1 Video Encoder (NTSC, PAL)
- H.264 Dual Encoding Stream (D1, CIF) per Channel
- H.264 High Profile/Main Profile/Base Line Profile Video Codec
- RTP/RTCP, UDP Protocol Support
- RTSP, TCP/UDP Protocol Support
- IP based Network Surveillance Solution
- High-performance Video Service
- Firmware Upgradeable Architecture
- Video Solution with Outstanding Network Service Capability
- Video Privacy Protection
- Web based Management
- Command Line Interface Support via RS232C Console Port
- Compact Chassis, DC External Power Supply

Hardware Specification

AP-NC600 Two(2) Channel D1 Video Codec

High-end
DSP

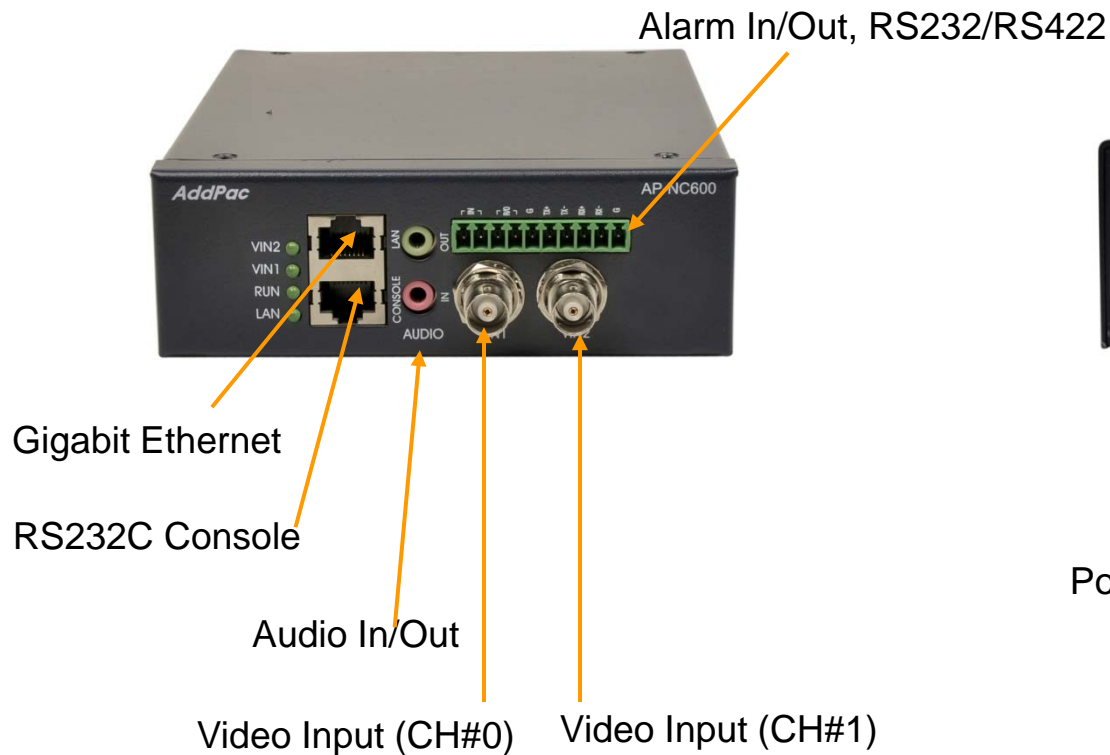
- High-end Programmable DSP Hardware Architecture
- Two(2) Channel D1 Video Encoder
 - Network Interface
 - One(1) 10/100/1000Mbps Gigabit Ethernet (RJ45)
 - One(1) Console Port (RJ45)
 - Powerful Video Input Interface
 - Two(2) Channel Analog Video Input (BNC Connector)
 - NTSC, PAL Camera Support
- High quality Audio and Voice Interface
 - Audio Input/Output Connector
- Camera Control Interface
 - One(1) RS-232C, RS422 Interface for External Camera Control
- I/O Interface
 - 2 Alarm Input, 1 Relay

Hardware Specification

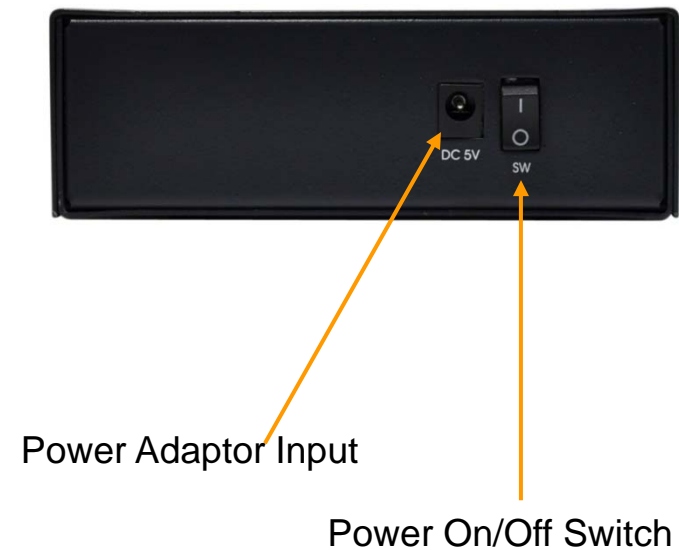
AP-NC600 Two(2) Channel D1 Video Codec

High-end
DSP

AP-NC600 Front Side View



AP-NC600 Back Side View





AP-NC500 One(1) Channel Video Codec

Main Features

AP-NC500 One(1) Channel D1 Video Codec

- IP based Video Encoding Solution
- One(1)-Channel D1 Video Encoder (NTSC, PAL) or Decoder
- H.264 Video Codec
- RTP/RTCP, UDP Protocol Support
- RTSP, TCP/UDP Protocol Support
- One(1) Port USB 2.0 Interface Support for External Storage
- IP based Network Surveillance Solution
- High-performance Video Service
- Firmware Upgradeable Architecture
- Video Solution with Outstanding Network Service Capability
- Video Privacy Protection
- Web based Management
- Command Line Interface Support via RS232C Console Port
- Compact Chassis, DC External Power Supply

Hardware Specification

AP-NC500 One(1) Channel D1 Video Codec

High-end
DSP

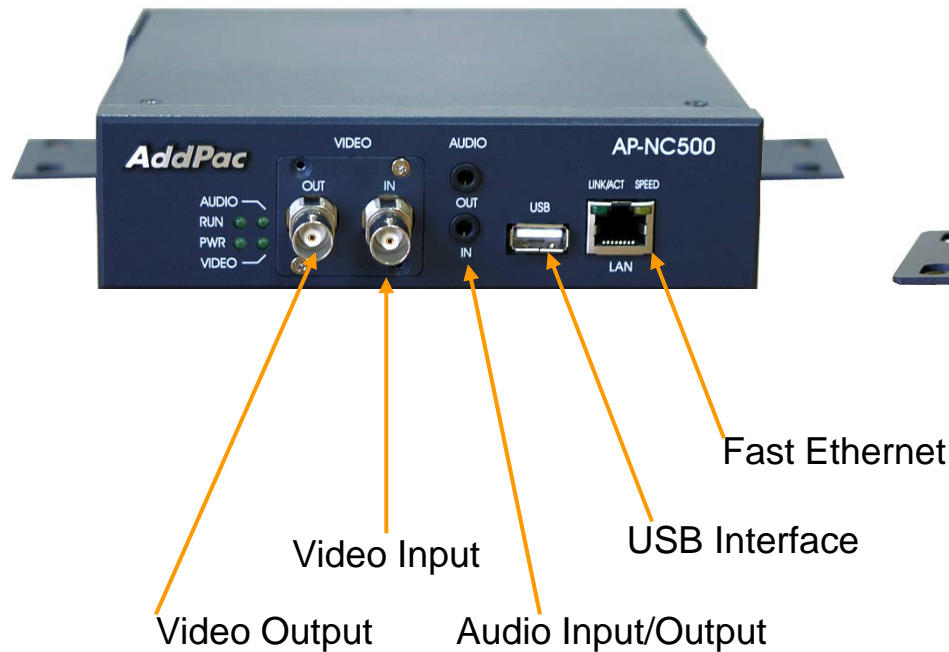
- High-end Programmable DSP Hardware Architecture
- Network Interface
 - One(1) 10/100Mbps Fast Ethernet
 - One(1) USB 2.0 Interface
- Powerful Video Interface
 - BNC Video Input + Output : AP-NC500 Model
 - BNC Video Input : AP-NC500E Model
 - BNC Video Output : AP-NC500D Model
- High quality Audio and Voice Interface
 - Stereo Audio Input/Output Connector
- Camera Control Interface
 - One(1) RS-232C, RS422 Interface for External Camera Control
- I/O Interface
 - 2 Alarm Input, 1 Relay

Hardware Specification

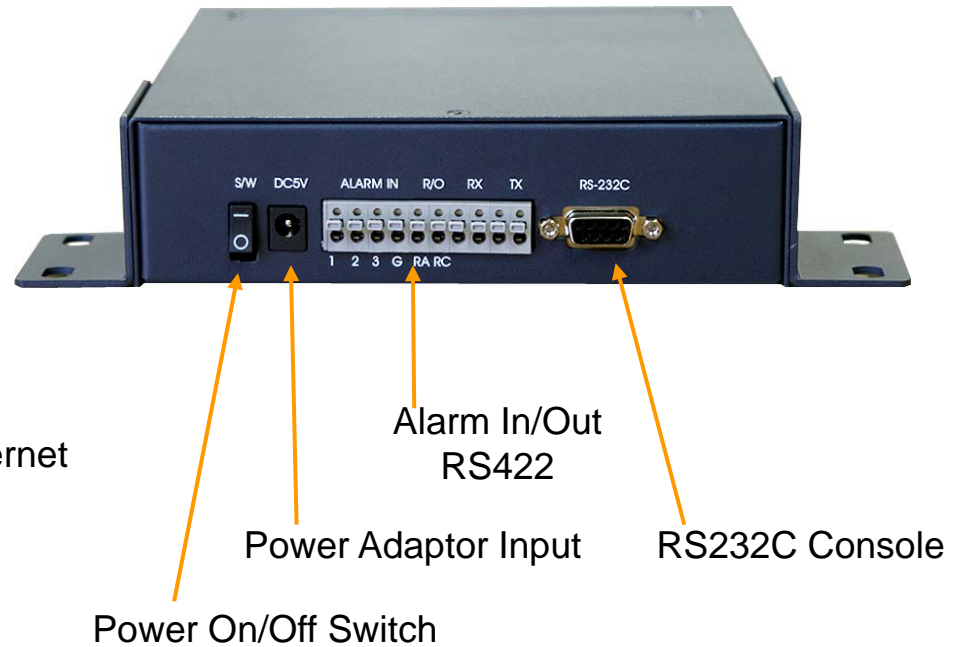
AP-NC600 Two(2) Channel D1 Video Codec

High-end
DSP

AP-NC500 Front Side View



AP-NC500 Back Side View





Thank you!

AddPac Technology Co., Ltd.
Sales and Marketing

Phone +82.2.568.3848 (KOREA)

FAX +82.2.568.3847 (KOREA)

E-mail sales@addpac.com