

AP-LMS1001™

1-Port Analog/VoIP Land to Mobile Station Gateway

High Performance LMS(Land to Mobile Station) Gateway Solution



Design Concept

AddPac

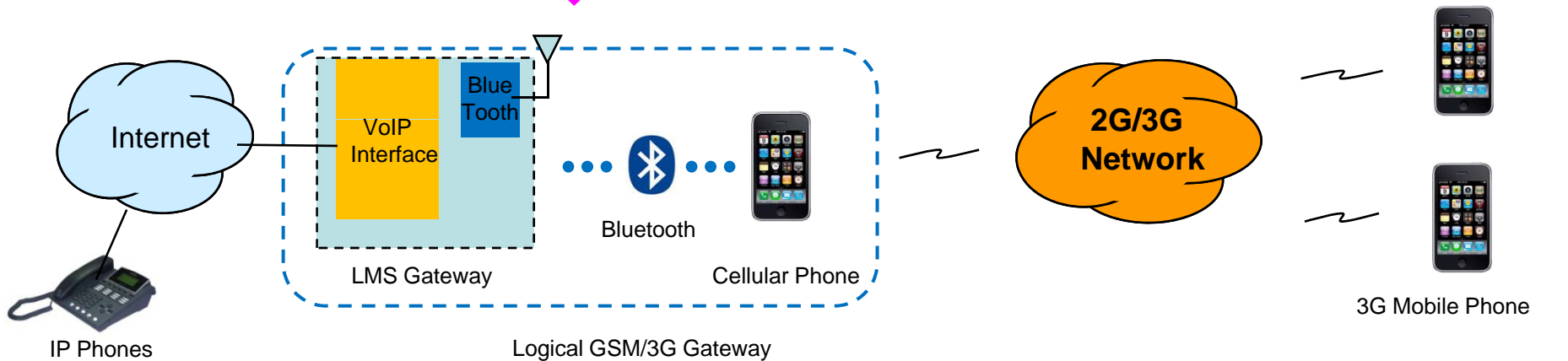
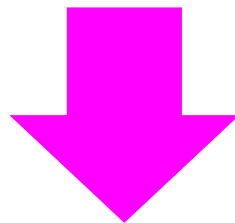
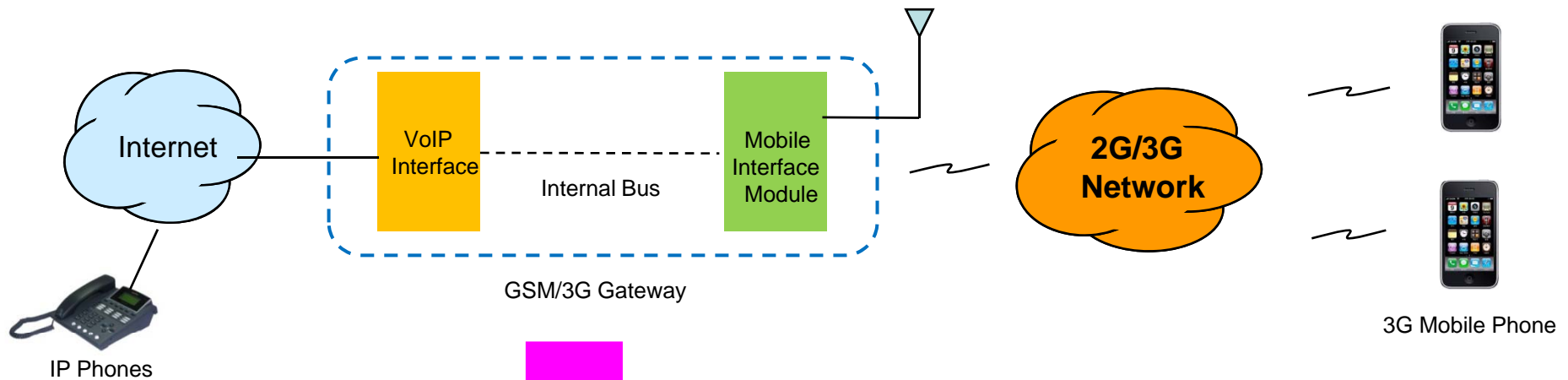
AddPac Technology

2012, Sales and Marketing

Contents

- LMS Gateway Concept
- Product Overview
- Hardware Specification
- H/W Block Diagram
- Network Service Diagram

LMS Gateway Concept



Product Overview

- Analog Interface (FXS)/VoIP Interface(LAN) Both Support
- Mobile Phone Interworking Solution via Bluetooth Technology
- H.323/SIP Dual Concurrent Stack Embedded
- High Performance RISC & Programmable DSP Architecture
- Two(2) 10/100Mbps Fast Ethernet (IP Share, etc)
- High Performance LAN-to-LAN Routing Capability
- G.711/G.726/G.723/G.729, T.38 Fax , VAD, etc
- Powerful Network Protocols (PPPoE, DHCP, Static Routing, etc)
- Firmware Upgradeable Architecture
- VPMS (VoIP Plug & Play Management System) for Large Scale Deployment
- Advanced Voice QoS Mechanism
- Light and Compact Design with External Power Supply

Hardware Specification

RISC
CPU

High-end
DSP

- RISC Microprocessor Computing Power
- 1-Port LMS Gateway
- 1-Port Antenna Interface
- VoIP Gateway Interface
 - AP-LMS1001 Model A: Basic Configuration
 - AP-LMS1001 Model B: One(1) FXS Port
- Network Interface for VoIP Direct Interface
 - Two(2) 10/100Mbps Fast Ethernet (RJ45)
- Run LED, LAN LED, Port LEDs
- External Power Supply

Hardware Specification

RISC
CPU

High-end
DSP

Front Side View

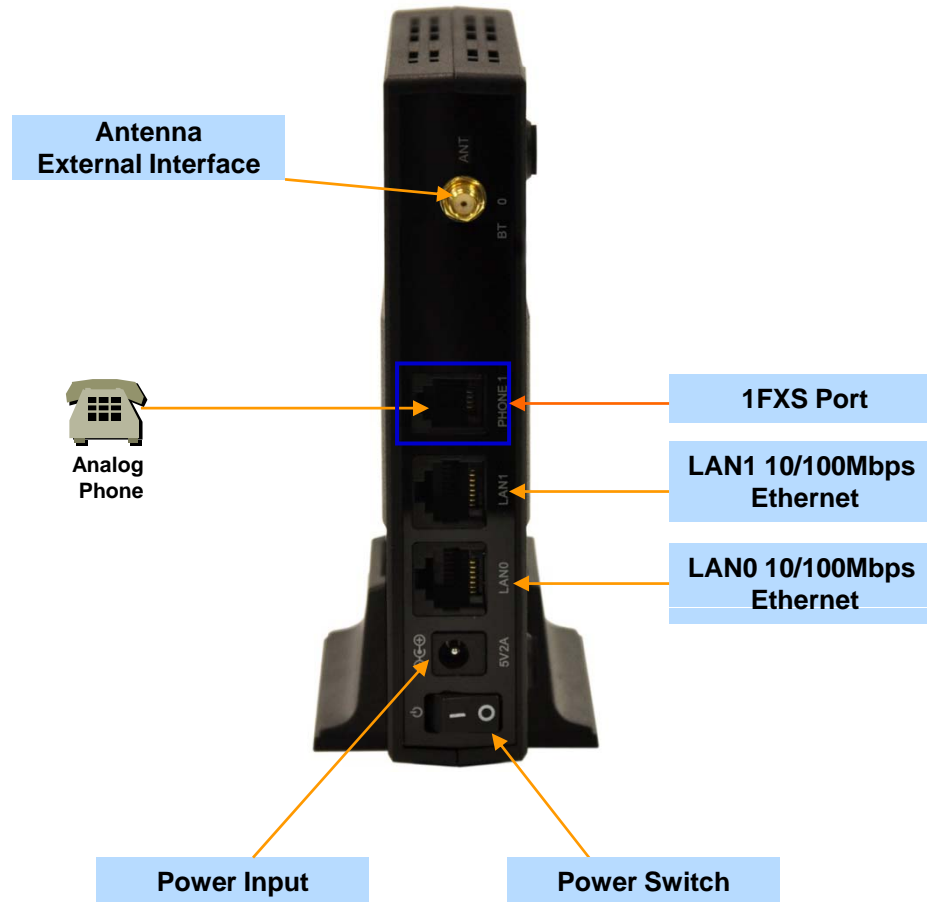


Hardware Specification

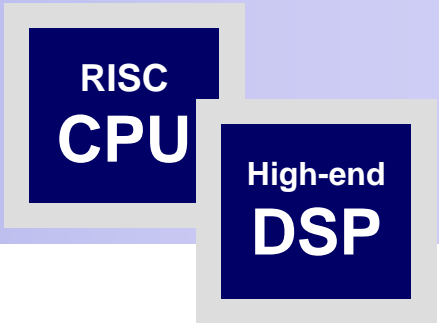
RISC
CPU

High-end
DSP

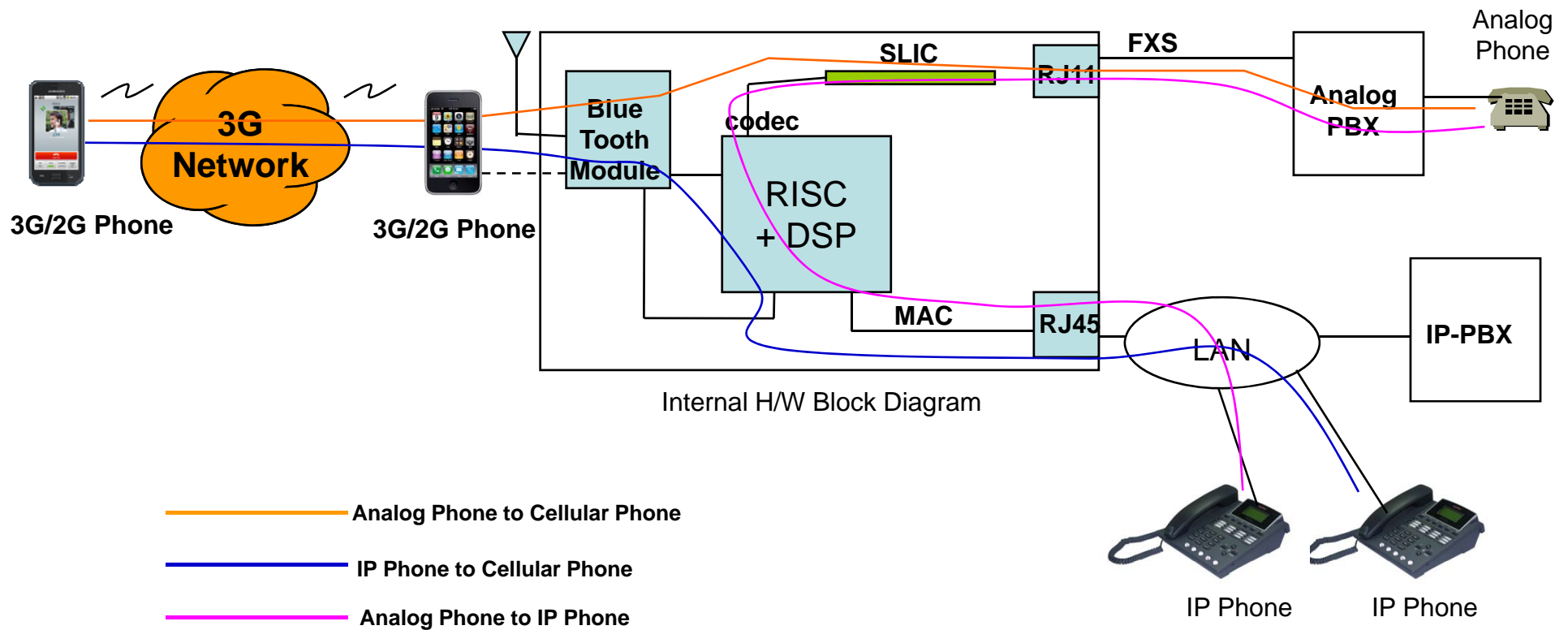
Back Side View



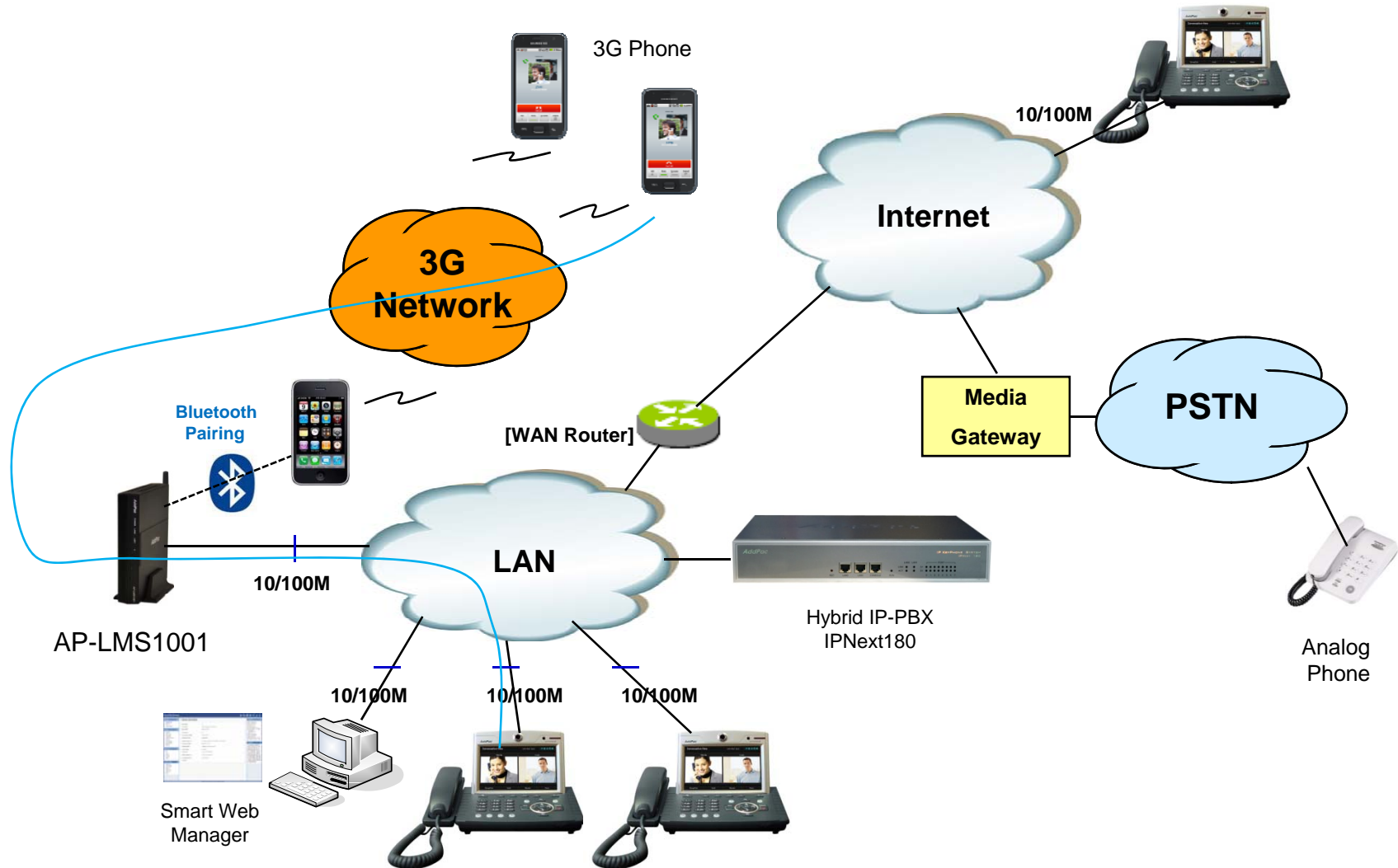
H/W Block Diagram



LSM Gateway Service Diagram



Network Service Diagram



LMS Gateway Series

Thank you!

AddPac Technology Co., Ltd.
Sales and Marketing

Phone +82.2.568.3848 (KOREA)

FAX +82.2.568.3847 (KOREA)

E-mail sales@addpac.com