



AP-GS816 GSM VoIP Gateway

VoiceFinder AP-GS816 is a new cutting edge IP to GSM gateway supporting maximum 16 ports of GSM Voice interface. GSM interface of AP-GS816 provide an optimized call scenario when it interoperates with conventional PBX. Compact cost effective design and system architecture of AP-GS816 provides customer satisfaction in high quality, performance and system reliance. This product uses the state-of-art technology voice compressed algorithm and unique QoS algorithm of AddPac to maintain the maximum voice quality under fast internet line and slow internet line as well. This product is designed based on high performance RISC CPU + DSP structure; supports upgraded speed, the best quality product, offers various user-friendly functions, manufactured at low cost and this product gives high performance for its price.

AddPac AP-GS2500 is a device that can support GSM VoIP gateway service (Internet to GSM). It also supports SIP, H.323 Multiple VoIP signaling protocol, various voice codec support (G.711, G.726, G.729, G723.1, etc), sixteen(16)-port GSM interface, two(2) fast ethernet ports, 1-port RS232C console, and state-of-art technologies and services. GSM gateway combining IP-PBX is now suggesting a new model for a main voice communication solution. In order to be a part of advanced VoIP communications naturally in the future, making an excellent choice of choosing GSM gateway is essential. VoiceFinder AP-GS816 is a mid-range GSM VoIP gateway providing total 16 GSM interface ports for GSM VoIP service. It is suitable for call termination service provider, general enterprises, medium and small public offices.

AddPac's various VoIP gateway series and multimedia network devices have been fully recognized in terms of its performances and stability throughout the world. AP-GS816, with our accumulated experiences and know-how in the enterprise and service provider markets, will provide full satisfactions for customers who ask for a next-generation GSM-Gateway.

Product Highlights

- Powerful RISC microprocessor and DSP
- Two(2) 10/100 Mbps Fast Ethernet interfaces
- 16-Port GSM Interface
 - 16 Antenna interface
 - 16 SIM cards interface
- VoIP Signaling stacks supporting SIP and H.323 concurrently
- SIP protocol support compliant with IETF RFC3261(or RFC2543)
- ANI based Routing Service Feature Support
- Multi-protocol routing for LAN and WAN access
- Voice Processing
 - VAD, DTMF,CNG,G.168, T.38 G3 Fax Relay
 - Voice Compression Algorithms: G.723, 729A, G.726, and 711
- SNMP MIB V2 for network administration
- Smart, easy Web-based management
- Enterprise VoIP Plug & Play Management System (VPMS) management
- Standard & extended access list for security
- Advanced Debugging Feature Support for Trouble Shooting
- Essential scalability features such as DHCP server & relay, NAT/PAT, IEEE transparent bridging, and debugging/diagnostics
- Remote firmware upgrade using FTP & TFTP
- Cisco-style Command Line Interface (CLI) for expert settings
- Scalability, authenticity, and reliability ensured due to the installed APOS internetworking software

AP-GS816 Applications

- GSM gateways for Large Enterprise
- IP to GSM Interworking Service

Hardware Specification

- RISC Microprocessor (CPU) + Voice DSP Processor
- Memory
 - System memory 512Mbyte NAND Flash Memory
 - Main memory 128Mbyte SDRAM
- 16-Port GSM Interface
 - Sixteen(16) GSM Module
 - Sixteen(16) Antenna Interface
 - Sixteen(16) SIM Card Interface
- Ethernet Interface
 - 10/100Mbps 2-port Ethernet (RJ45)
- Console Port
 - RS-232C 1-port Console (RJ45)

Power & Operational environment

- Power Supply VAC 110~220V, 50/60Hz, 5V 15A , 12V 8A
- Temperature 0°C ~+50°C (operating)
- Temperature -40°C ~+85°C (storage)
- Humidity 5%~95%

Dimensions

- H x W x D : 56mm x 440mm x 313mm
- Weight : 4.7 (Kg)

IP Routing Protocol

- Static and IEEE802.1Q VLAN Routing

WAN Protocol

- Broadband IP Network
- PPPoE
- Standard Compliant WAN Network Protocol

GSM Service

- GSM two-stage dialing
- GSM Module Management : PIN, IMSI, Power, (No) Shutdown Setting, Up/Down Speed Display, Current Power Level Display
- GSM Inbound call black list & white list
- VoIP Inbound call black list and White List
- LCR (Least Cost Routing)-GSM Traffic Metering
- LCR (Least Cost Routing)-Scheduling
- LCR (Least Cost Routing)-Simulator
- GSM Messaging Service
- GSM SNMP : GSM Standard MIB
- Call Back Service at GSM Port Busy

Voice over IP Service

- H.323, SIP Dual Concurrent VoIP Signaling Protocol
- VAD, DTMF, CNG, G.168, T.38 FAX Relay
- Voice Codec : G.723, G.729, G.726, G.711, etc
- High Level VoIP Signaling Debugging Features
- Polarity Inversion Feature
- Various VoIP Features
- Interoperable with Diverse VoIP Gateways
- Interoperable with Diverse VoIP Gatekeeper, SIP Proxy, MGC

Operation & Management

- Performance Analyzing (Process, CPU, Interface)
- Configuration Backup and Restore for APOS Management
- Debugging and Diagnosis Features
- System Booting/Rebooting through Watch Dog
- Data Logging Features
- IP Traffic Statistics through Accounting
- Debugging/Diagnostic

Network Management

- Standard SNMP Agent (MIB v2) Support
- Console, Telnet, Web Based Management
- Remote Download via FTP/TFTP
- Remote Firmware Upgrade using FTP/TFTP

Traffic QoS Control

- Traffic QoS Control Feature For Services
- Voice, Data Prioritizing Control
- Various QoS Algorithm Support

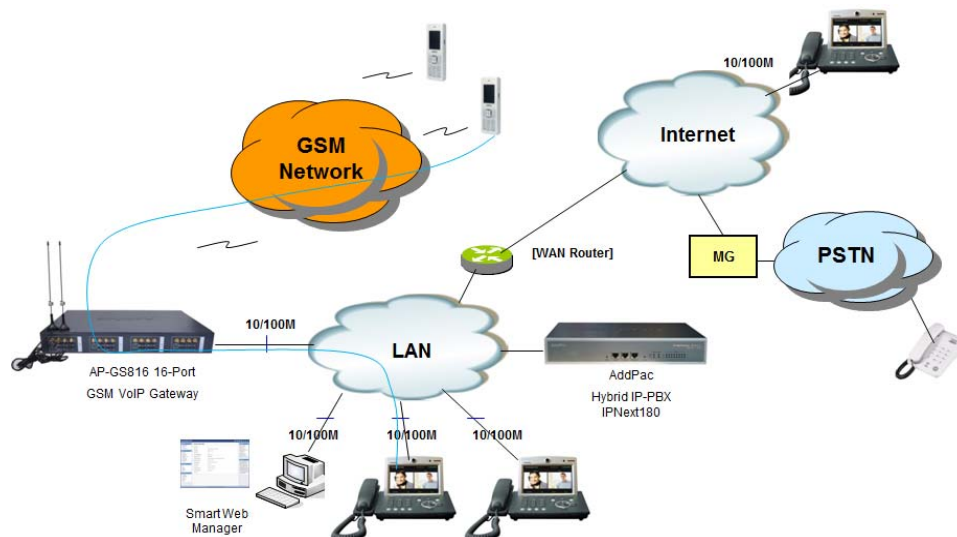
Security Feature

- IP Packet Filtering / Access List
- Access Control and Data Protections
- Enable/Disable for Specific Protocols
- Multi-level User Account Management
- Auto-disconnect for Telnet/Console Sessions
- PPP User Authentication Support
 - Password Authentication Protocol (PAP)
 - Challenge Handshake Authentication Protocol (CHAP)

Other Features

- DHCP Server and Relay
- Network Address Translation (NAT)
- Port Address Translation (PAT)
- Transparent Bridging (IEEE Standard)
 - Spanning Tree Bridging Protocol
 - Concurrent Routing and Bridging
- NTP (Network Time Protocol)
- Cisco Style Command Line Interface
- Standard Compliant Network Protocol
- AddPac Proprietary IP Sharing
- MAC Address Filtering
- DNS Proxy

Network Configuration



Ordering Information

- AP-GS816 : Standard Configuration
- AP-GS816 GSM Gateway Main Body
- Sixteen(16) GSM Interface (Antenna, SIM card slot)
- 2-Port 10/100Mbps Fast Ethernet(RJ45)
- 1-Port RS232C Console Interface(RJ45)
- CAB-LAN Ethernet Cable
- CAB-CON RS-232C Console Cable
- CAB-ANT Antenna Cable