
AP300 VoIP Gateway

Performance Study:
LAN to LAN Throughput Test



AddPac Technology Co., Ltd.

R&D Center

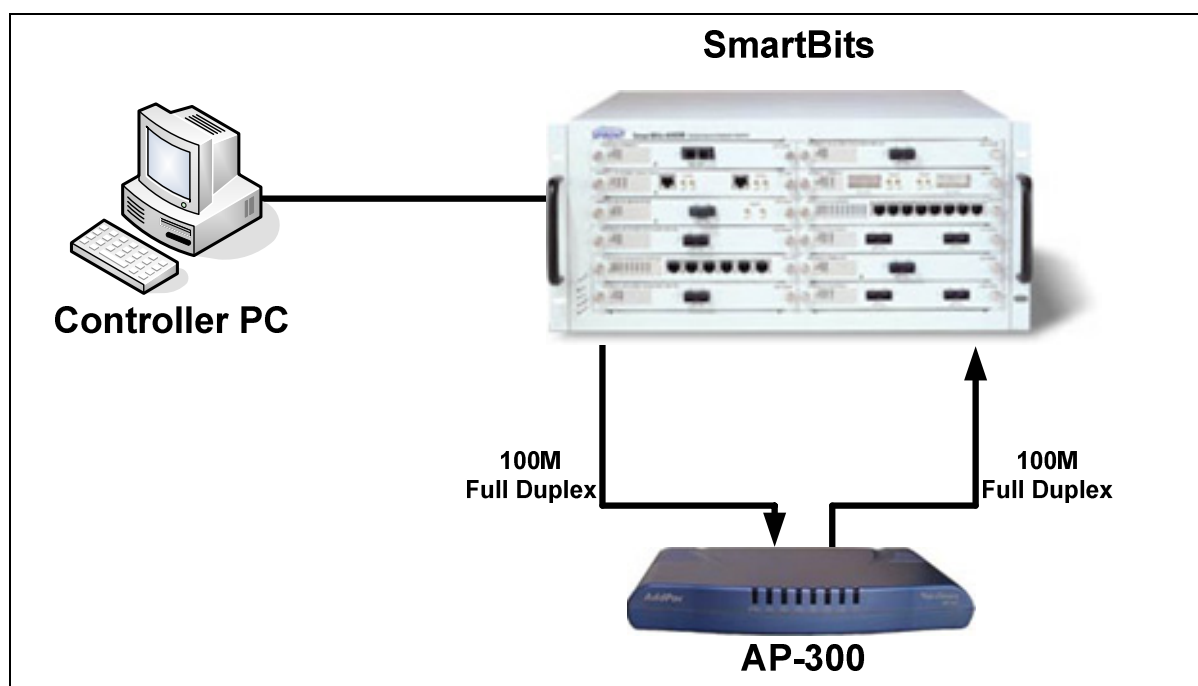
www.addpac.com

Hardware Specification

HW		Specification
Model		AP300 Series
Product Categories		Small-scale VoIP Gateway
Microprocessor		64bit RISC Microprocessor
Memory	System Memory	2MB Flash Memory
	Main Memory	32MB High-Speed SDRAM
Voice Interface	FXS Voice Port	1~2 Ports, RJ-11 Connector
	PSTN Port	1-Port, RJ-11 Connector
Ethernet Interface	Ethernet WAN Port	1-Port 10/100M Fast Ethernet, RJ-45 Connector
	Ethernet LAN Port	1-Port 10/100M Fast Ethernet, RJ-45 Connector
Console Interface	RS-232C Serial Port	1-Port, RJ-45 Connector
Power Supply	AC Power Input	External AC110~220V Power Supply (Adapter)
Hardware	Structure, Material	ABS, Compact Design
Dimension	W x D x H, Weight	200 x 137 x 26(mm), 400g

Model	FXS	FXO	Ethernet	PSTN Backup	Console	APOS
AP300B	2	-	2 (10/100)	1	1	H.323, SIP, MGCP
AP300C	1	-	2 (10/100)	1	1	H.323, SIP, MGCP

Test Network Diagram



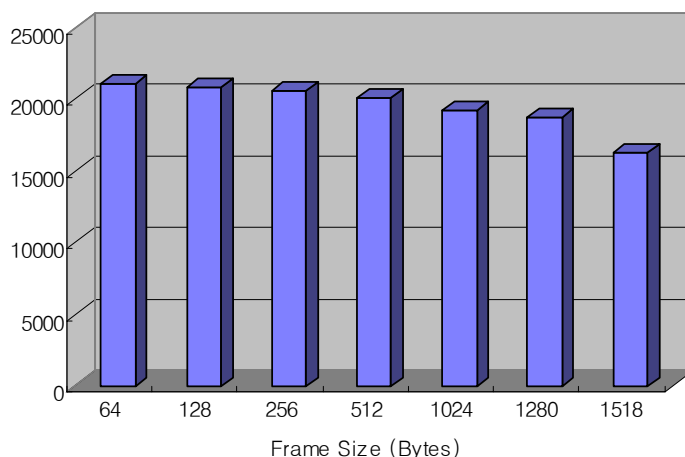
Test Details

- Performance measuring equipment: SmartBits 2000
- Test terms : Throuput test with SmartBits Application v3.00
- Throughput Test Length : 60 seconds
- Test mode: Bi-directional, Uni-directional

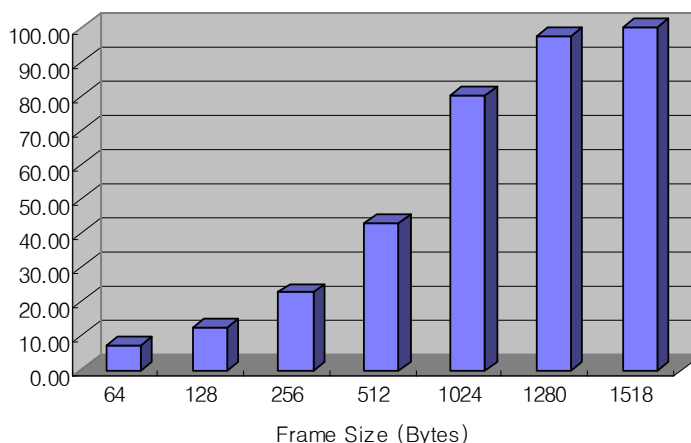
Test Result A : Bi-directional

Frame Size (Bytes)	Passed Rate (%)	LAN0 → LAN1 (pks/sec)	LAN1 → LAN0 (pks/sec)	Total (pks/sec)
64	7.08	10540	10540	21080
128	12.30	10386	10386	20772
256	22.74	10297	10297	20594
512	42.82	10060	10060	20120
1024	80.06	9586	9586	19172
1280	97.60	9384	9384	18768
1518	99.94	8122	8122	16244

Bi-directional Packet Rate (pks/sec)



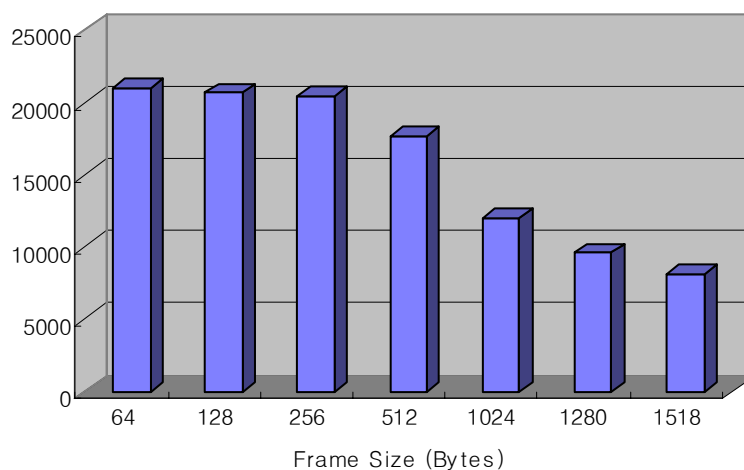
Bi-directional Passed Rate (%)



Test Result B : Uni-directional

Frame Size (Bytes)	Passed Rate (%)	LAN0 → LAN1 (pks/sec)	Total (pks/sec)
64	14.12	21008	21008
128	24.46	20661	20661
256	45.21	20475	20475
512	75.03	17630	17630
1024	99.95	11967	11967
1280	99.97	9612	9612
1518	100.00	8127	8127

Uni-directional Packet Rate (pks/sec)



Uni-directional Passed Rate (%)

