



PassFinder

AP2801

ATM Router

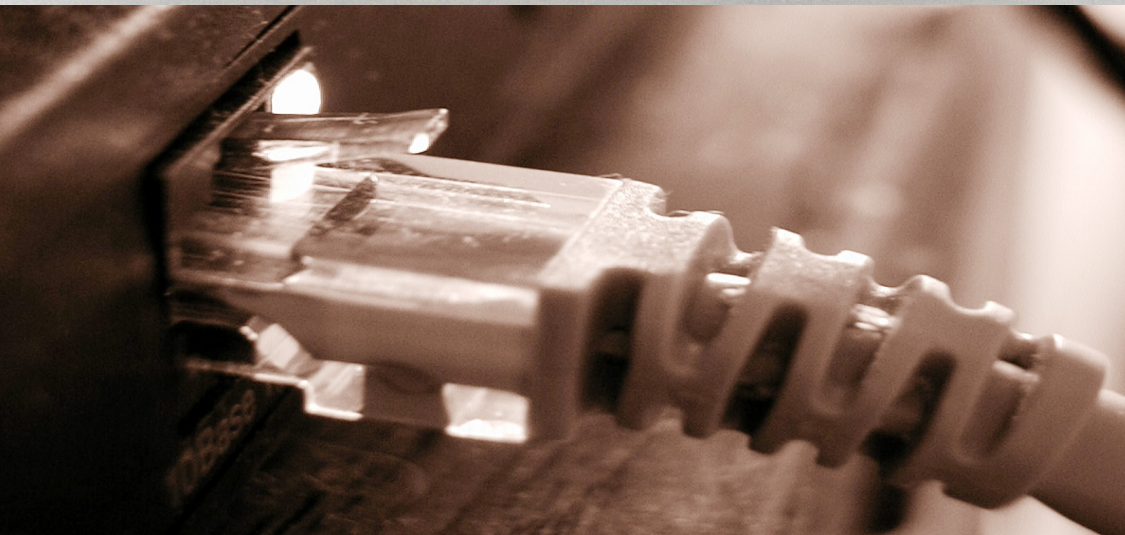


Oct. 2003

Technical Sales and Marketing

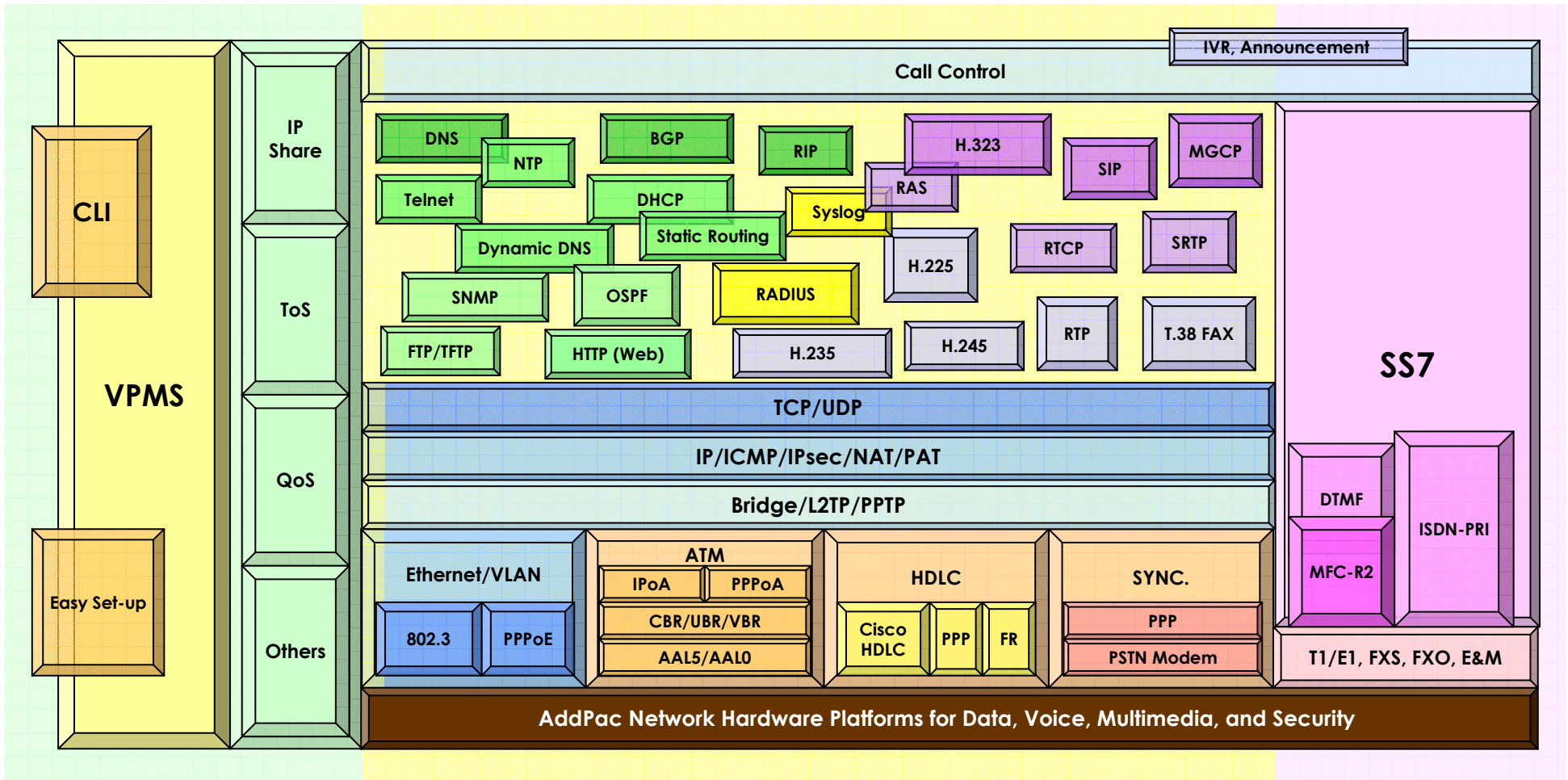
AddPac Technology

www.addpac.com



AP2801 ATM Router Product Overview

APOS Internetworking Protocol Stack

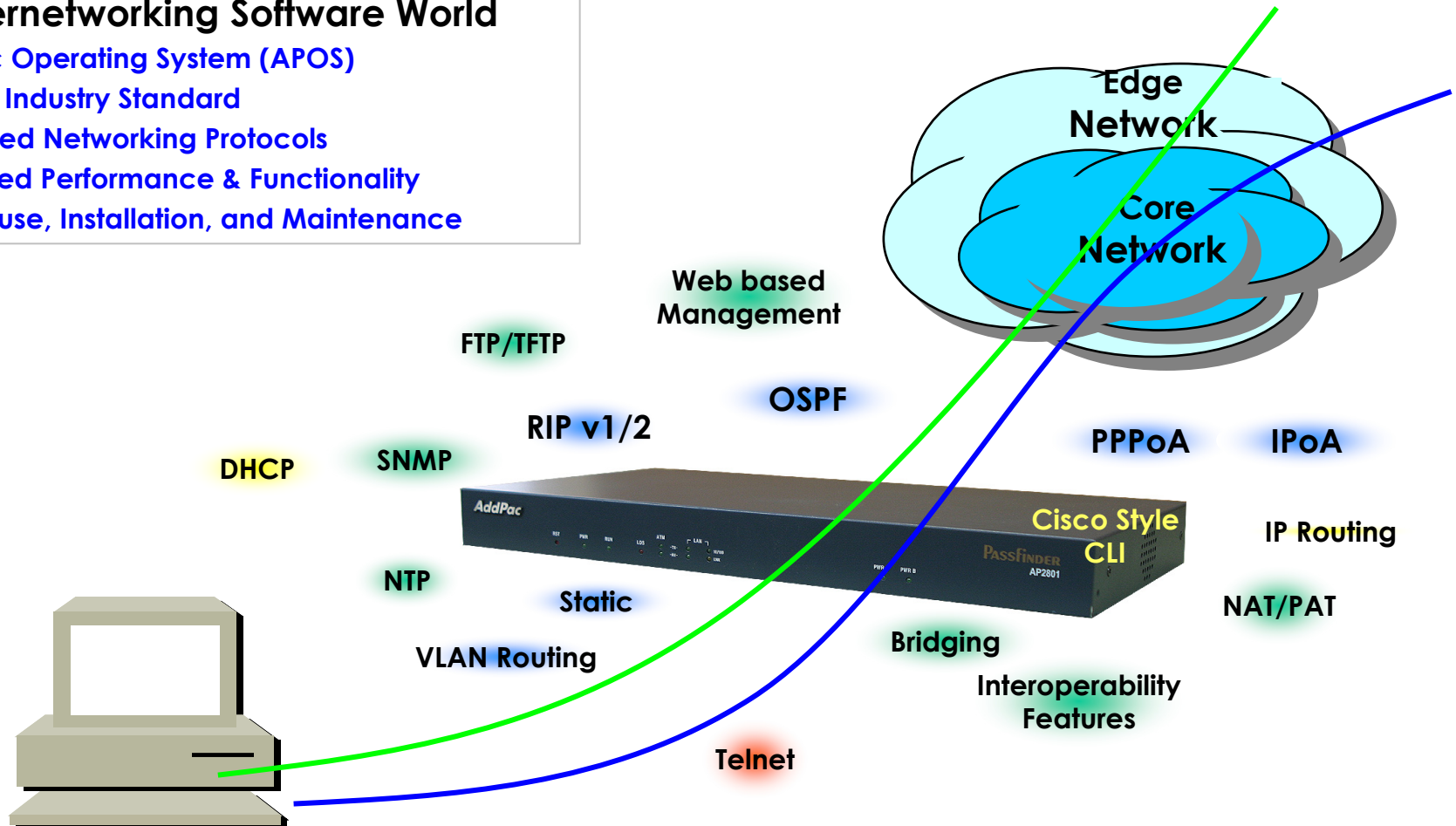


AP2801 ATM Router Product Overview

APOS Internetworking S/W World

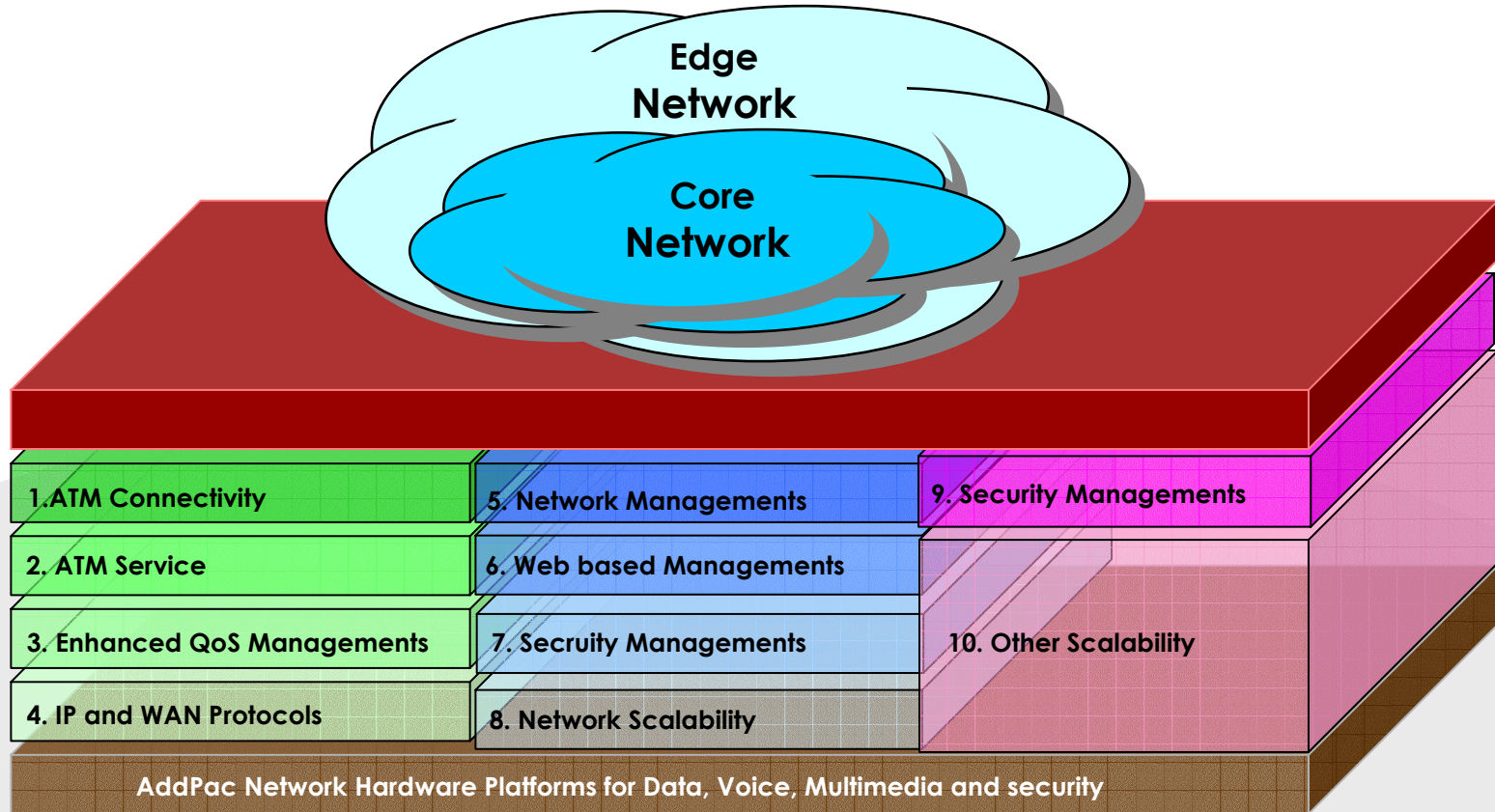
- APOS Internetworking Software World

- AddPac Operating System (APOS)
- Support Industry Standard
- Integrated Networking Protocols
- Optimized Performance & Functionality
- Easy to use, Installation, and Maintenance



AP2801 ATM Router Product Overview

APOS Internetworking S/W World (cont.)



AP2801 ATM Router Product Overview

ATM Router Connectivity

- Network Interface

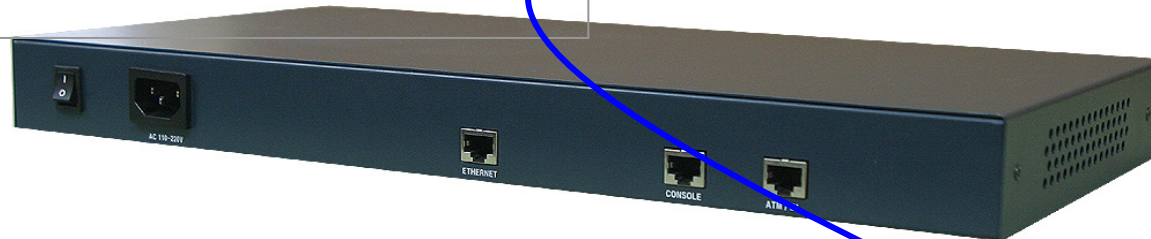
- 1-port E1 ATM Port

- LAN Interface

- 1-port 10/100Mbps Fast Ethernet Port

- Console Port

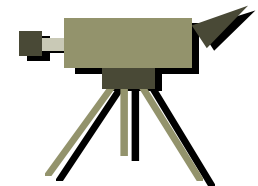
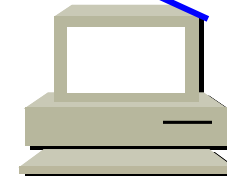
- 1-port RS232C Asynchronous Serial Port



ATM E1/T1

Edge
Network

Core
Network

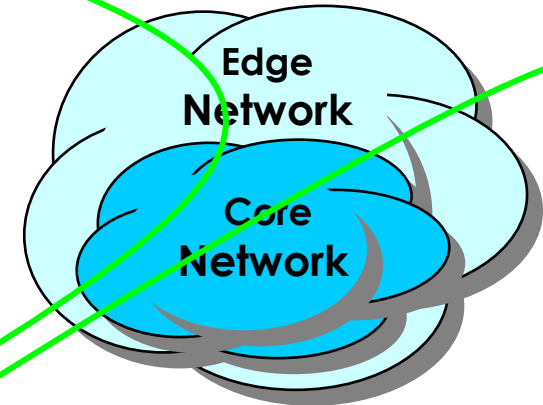


AP2801 ATM Router Product Overview

ATM Service

- Standard ATM E1 service
- ATM PVC UNI3.0, 3.1, 4.0 Support
- RFC1483 and RFC1577 based IPoA Service
- PPPoA Services
- ATM Classes of Service Support
 - ATM PVCs and SVCs Service
 - CBR, rt-VBR, nrt-VBR, UBR, and UBR+ Support
 - AA10 ,AA15
- PCR and MCR Service
- ATM Traffic Management Support
- provide Priority Level of 8-layer with ATM Pace Control
- Traffic shaping on a per-VC basis

PPPoA



IPoA

ATM E1/T1

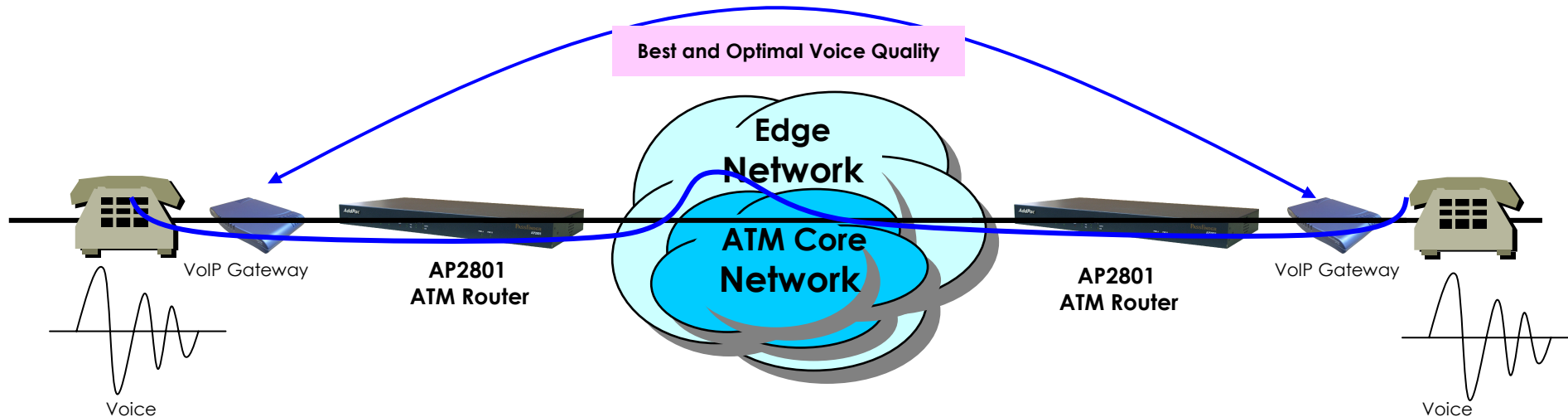


AP2801 ATM Router Product Overview

Enhances QoS Managements

- Enhances **Transmit Voice QoS Features**

- Voice Traffic Priority Queuing
- QoS Service Profiling
- IP Header Control such as ToS, Diffserv
- CoS (Class of Service) Queuing



AP2801 ATM Router Product Overview

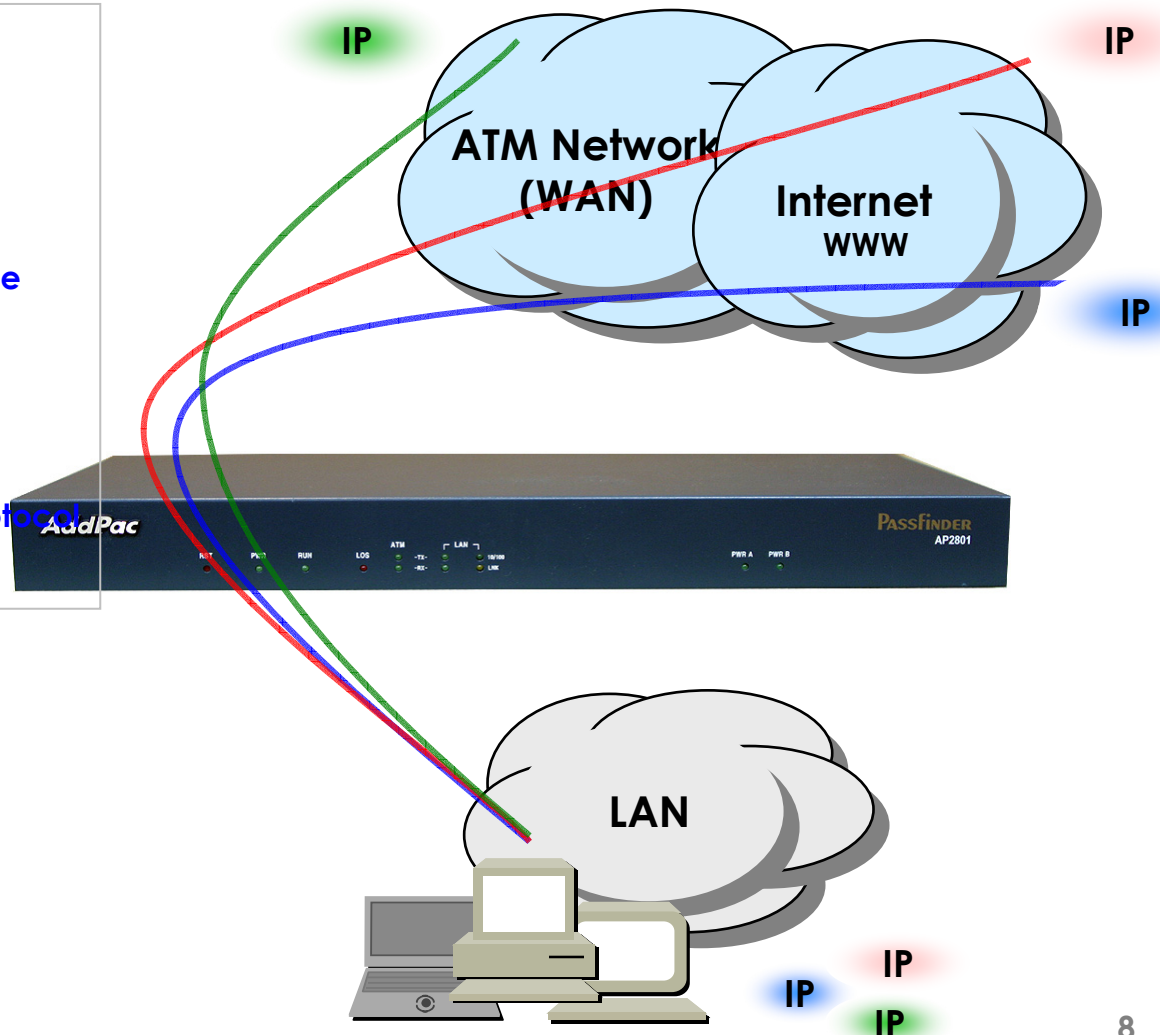
IP and WAN Protocols

- **IP Routing Protocols**

- Multi-protocol Internetworking Services
- Static IP routing
- RIP v1/v2
- OSPF v2 routing protocols support
- Transparent Bridging (IEEE Spanning Tree Protocol)

- **WAN Protocols**

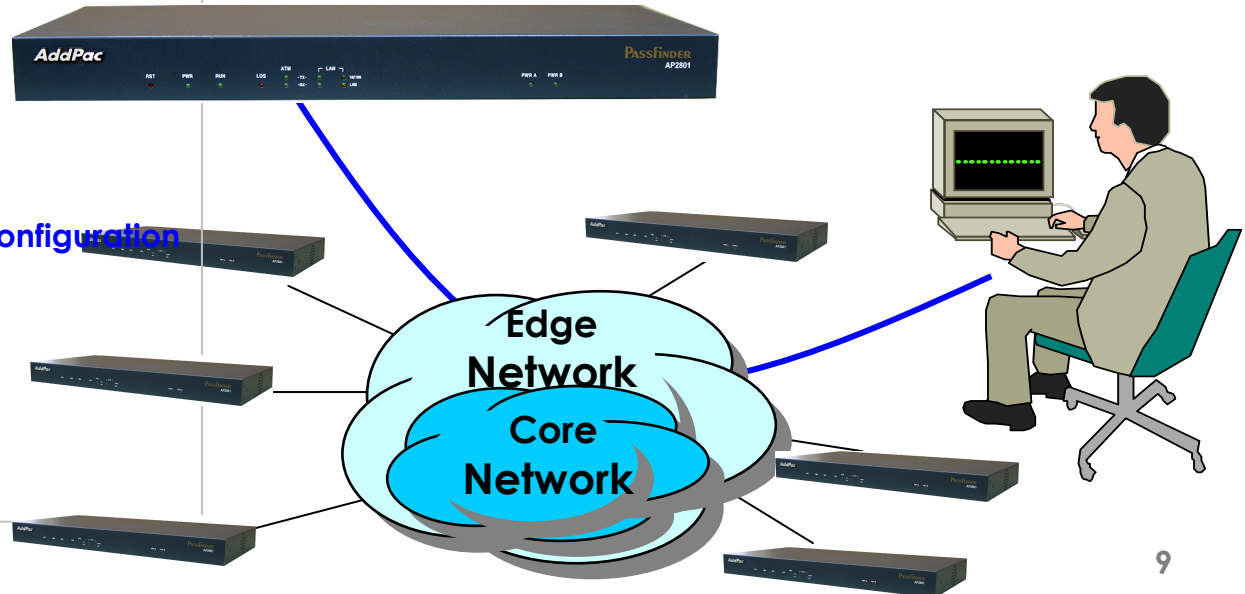
- Point-to-Point Protocol (PPP)
- High-level Data Link Control (HDLC) Protocol



AP2801 ATM Router Product Overview

Network Managements

- **SNMP**
 - Standard Simple Network Management Protocol(SNMP) Agent support
 - MIB v1 and v2 Support
- **Web-based Management**
 - Easy Setup
- **Watch-dog Function**
 - Hardware, Software watch-dog services
- **Remote Management**
 - Telnet
 - Rlogin
 - Console
- **Auto Upgrade Service**
 - HTTP server based APOS image and configuration file auto-upgrade support
- **Batch Job Function**
 - Text based script downloading



AP2801 ATM Router Product Overview

WEB Based Management

- **WEB Based Management (GUI)**
 - Web Based Management using HTTP Server Interface
 - Easy Setup
 - Graphical User Interface (GUI)



Ethernet

<http://a.b.c.d>

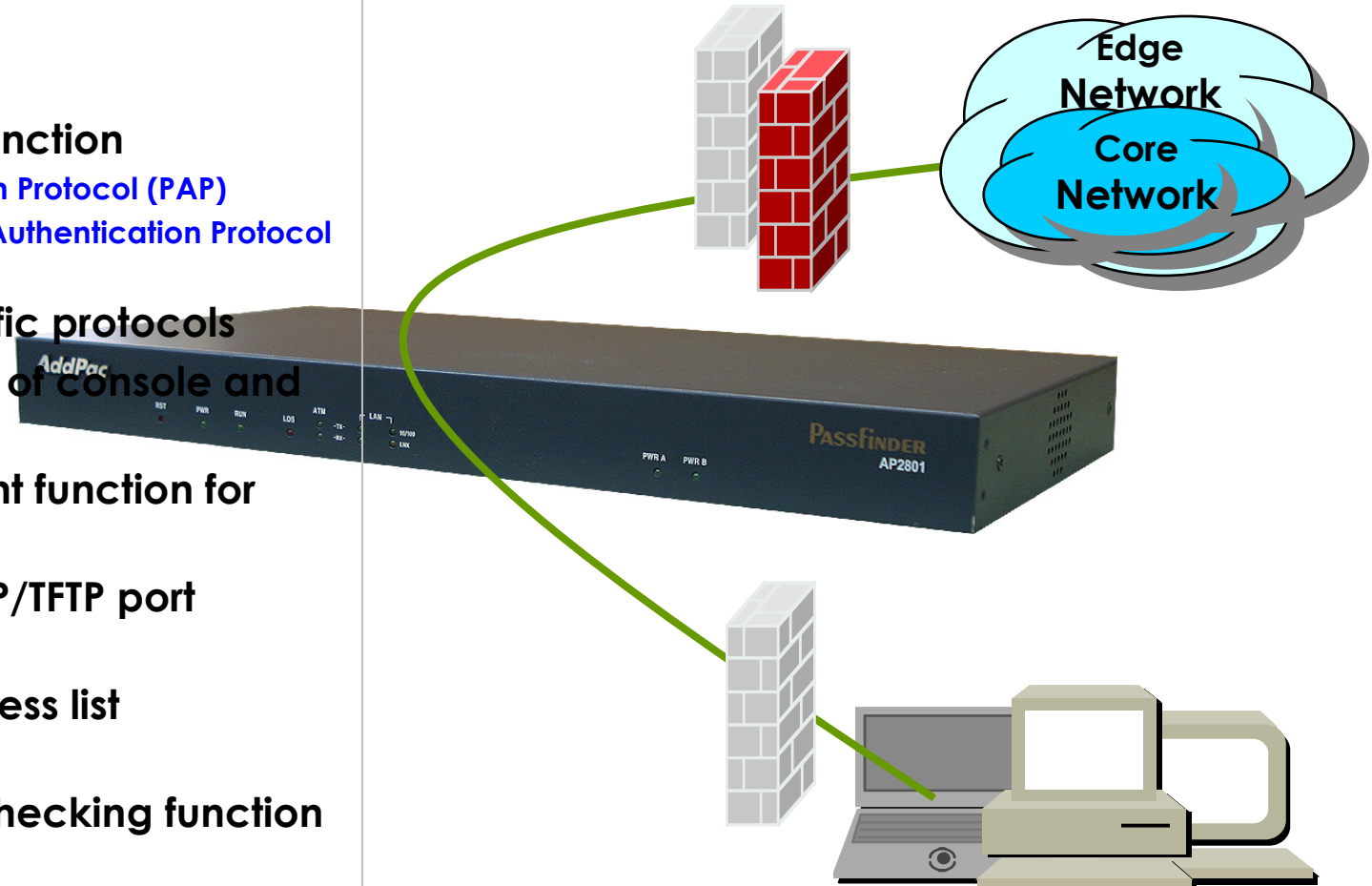
Interface	IP-Address	Status	Protocol
loopback0	127.0.0.1	up	up
ether0.0	172.18.1.17	up	up
serial0	20.1.2.253	down	down
serial1	unassigned	down	down



AP2801 ATM Router Product Overview

Security Managements

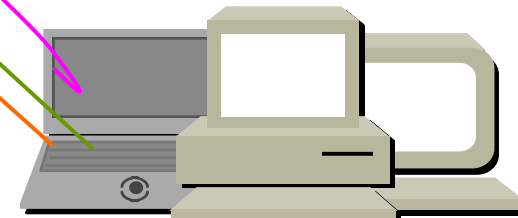
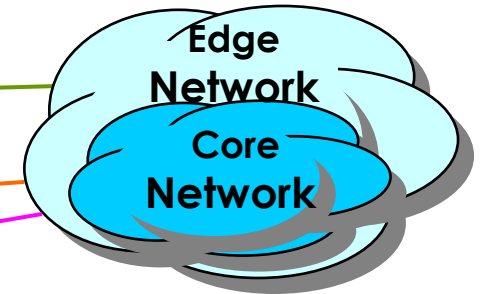
- IP packet filtering
- IP access list
- User authentication function
 - Password Authentication Protocol (PAP)
 - Challenge Handshake Authentication Protocol (CHAP)
- Enable/Disable specific protocols
- Auto-square connect of console and Telnet session
- Account Management function for multi-level user
- SNMP/TELNET/FTP/HTTP/TFTP port assignment function
- SNMP/TELNET/FTP access list management
- Boot mode security checking function



AP2801 ATM Router Product Overview

Network Scalability

- **Bridging Service**
 - Spanning Tree Bridging protocol (IEEE) support
- **DHCP**
 - Server and Relay
- **IP Accounting**
- **PAT (Port Address Translation)**
- **NAT (Network Address Translation)**
- **Cisco Style CLI (Command Line Interface)**
- **PPTP (Point-to-Point Tunneling Protocol)**
- **NTP (Network Time Protocol)**
- **FTP/TFTP**
 - Server and Client support
- **DNS**
 - Dynamic DNS Client support



AP2801 ATM Router Product Overview

Operation & Management

- **System Performance Analysis**
 - Process Check Analysis
 - CPU, Connection Interface Analysis
- **Configuration Management**
 - APOS and Configuration Backup, Restore
 - Configuration Erase, Save
- **Debugging and Diagnostics**
 - Data Packet Decoding for APOS Protocols
- **System Booting and Auto Rebooting**
 - Fast booting into 30 second
 - Watch Dog Function for High-Availability
- **System Managements**
 - Data Logging and IP Traffic Statistics
 - Command HELP and History
 - Command Line Interface (CLI)



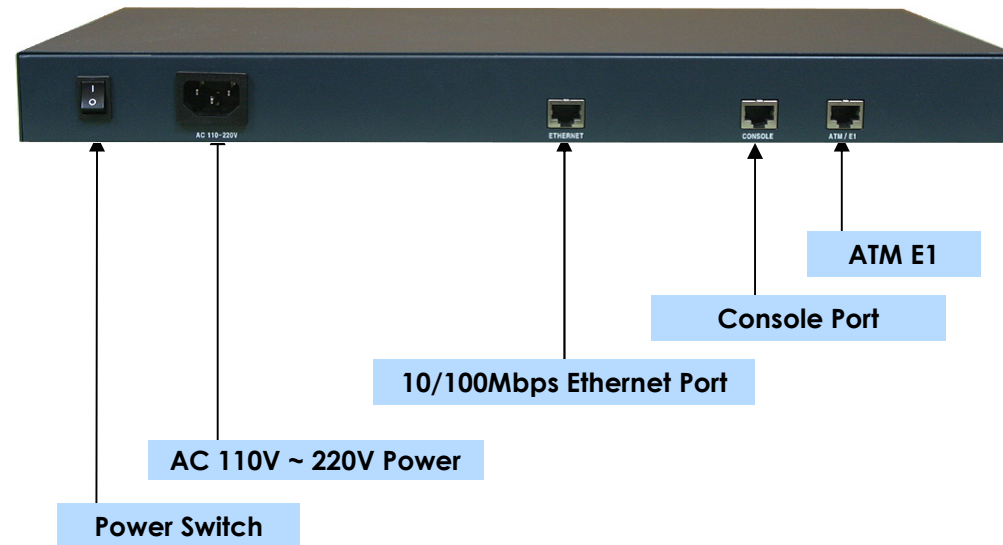
AP2801 ATM Router Product Overview

AP2801 Hardware Specification

Hardware Specifications

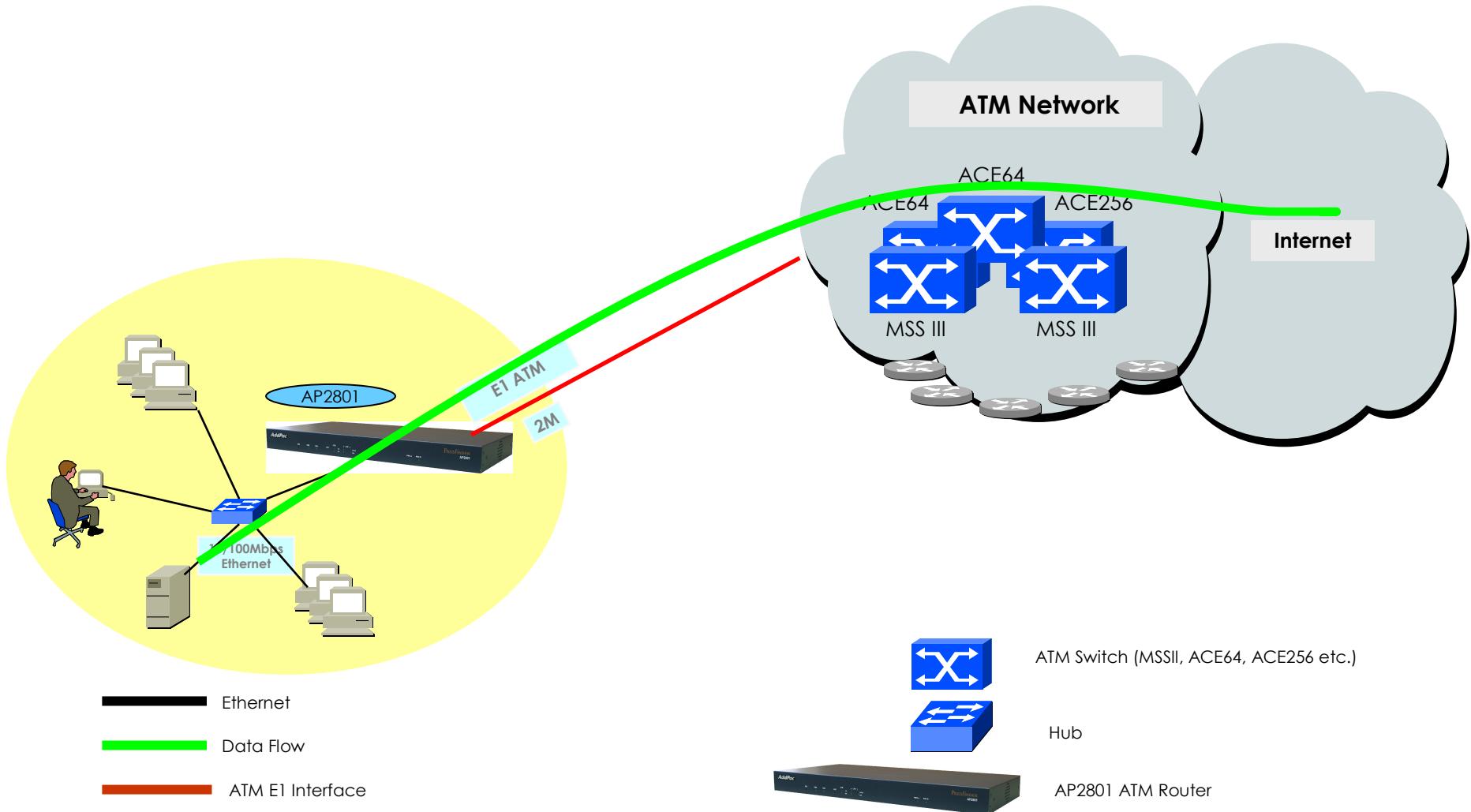
AP2801 ATM Router	Basic Specifications
CPU	64Bit RISC Microprocessor
Fixed Network Interface	1-Port E1 ATM Interface (RJ45)
	1-Port 10/100Mbps Ethernet Interface (RJ-45)
	1-Port RS-232C Console Port (RJ-45)
Memory	4Mbyte Flash Memory
	16Mbyte SDRAM Main Memory
	8Mbyte Local SDRAM for ATM access
	512Kbyte Flash Memory for Boot Loader
Power Requirement	VAC 110~ 220V Auto sensing, 50/60Hz Dual Power
Operating Temperature	0°C ~ 55°C (32 °F ~ 112°F)
Storage Temperature	-40°C ~ 85°C (-40°C ~ 185°F)
Relative Humidity	5% ~ 95% (Non-condensing)
Dimensions	44mm x444mm x 220mm (H x W x D)
Weight (g)	2.7Kg

Network interface Configurations



AP2801 ATM Router Networking Configuration

ATM Data Service



AP2801 ATM Router Product Overview

AP2801 Ordering and Pricing

• AP2801 ATM Router Series

– Order No:

AP2801-01 : AP2801 ATM Router Standard Configuration

Hardware

- High-speed 64bit RISC CPU
- One(1) ATM E1 Interface , One(1) Fast Ethernet, Console
- 4MB Flash, 16MB SDRAM, 8MB Local SDRAM
- Built-in APOS Internetworking Software
- Dual-Power Supply Unit/Single AC Input(Free Voltage)
- 1Ux19" Rack Mountable Chassis
- Including CAB-LAN, CAB-CON

CAB-LAN : RJ45 Ethernet Cable

CAB-CON : RJ45 RS-232C Console Cable



• Pricing

- AddPac Technology Regional Sales Managers
- Authorized Sales and Marketing Representatives
- Please Contact www.addpac.com

Thank you !

www.addpac.com