

# AP-VP280™

## BcN Video Phone

High Performance Broadband Convergence Network  
Video Phone Solution

## Wireless LAN Features



**USB WiFi LAN**

[www.addpac.com](http://www.addpac.com)

# **AddPac**

**AddPac Technology**

2008, Sales and Marketing

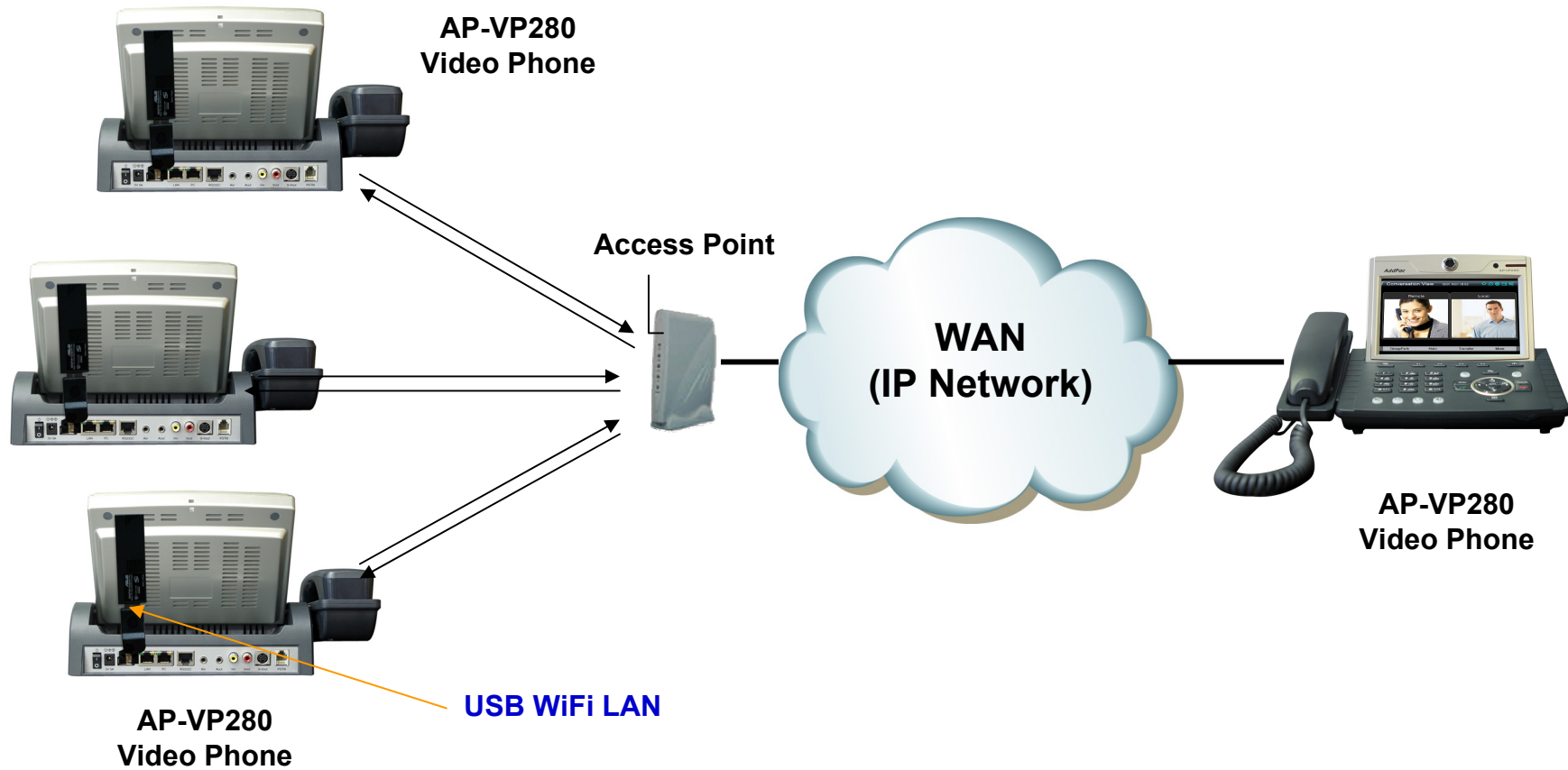
# Contents

- Wireless LAN Specification
- BSS/IBSS Network Diagram
- Performance Estimation

# Wireless LAN Specification

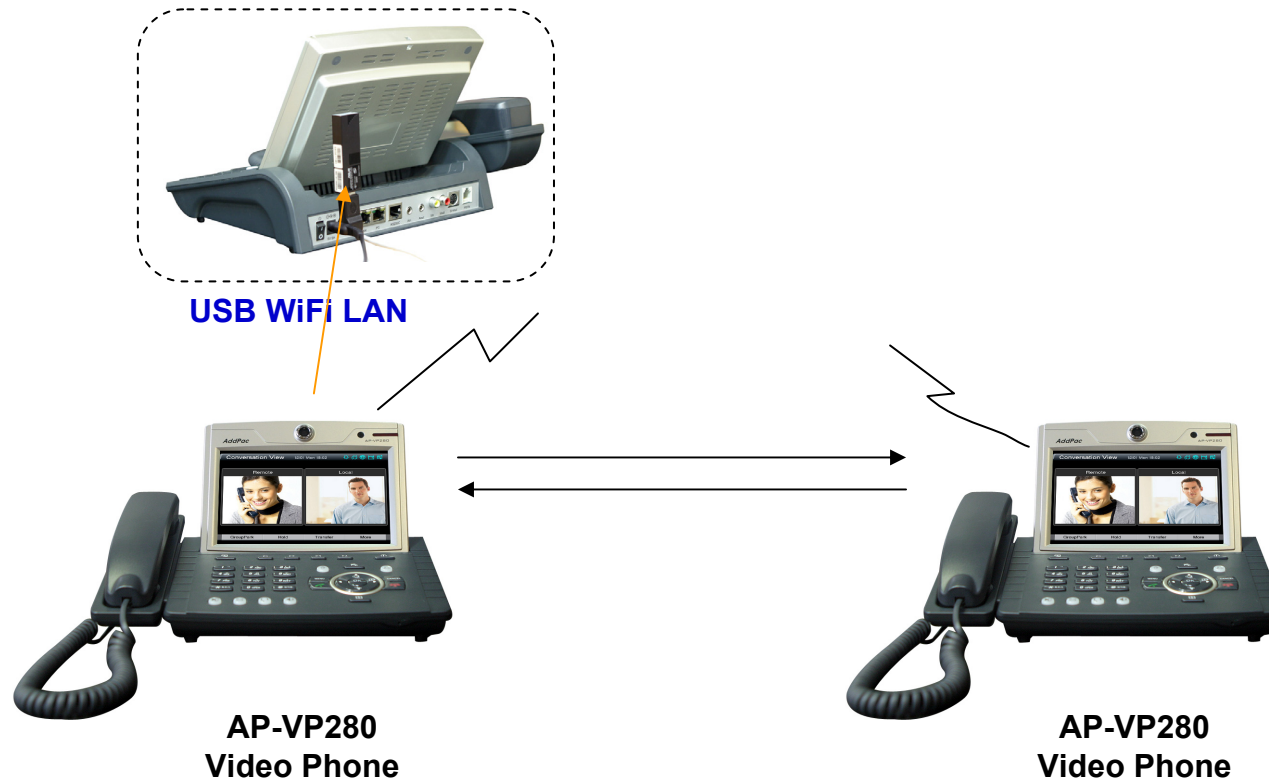
- **IEEE 802.11b/g Support**
  - BSS(Base Service Set. Infra-structure)
  - IBSS(Independent BSS. ad-hoc)
  - Authentication/Security Mode
    - Current : Open/None, Open/WEP(40B/104B)
    - Developing : WPAPSK/AES
- **Chipset Support**
  - Chipset : ralinktech RT2570 USB
  - USB Devices : ASUS WL-167g, D-Link DWL-G122

# BSS Network Diagram



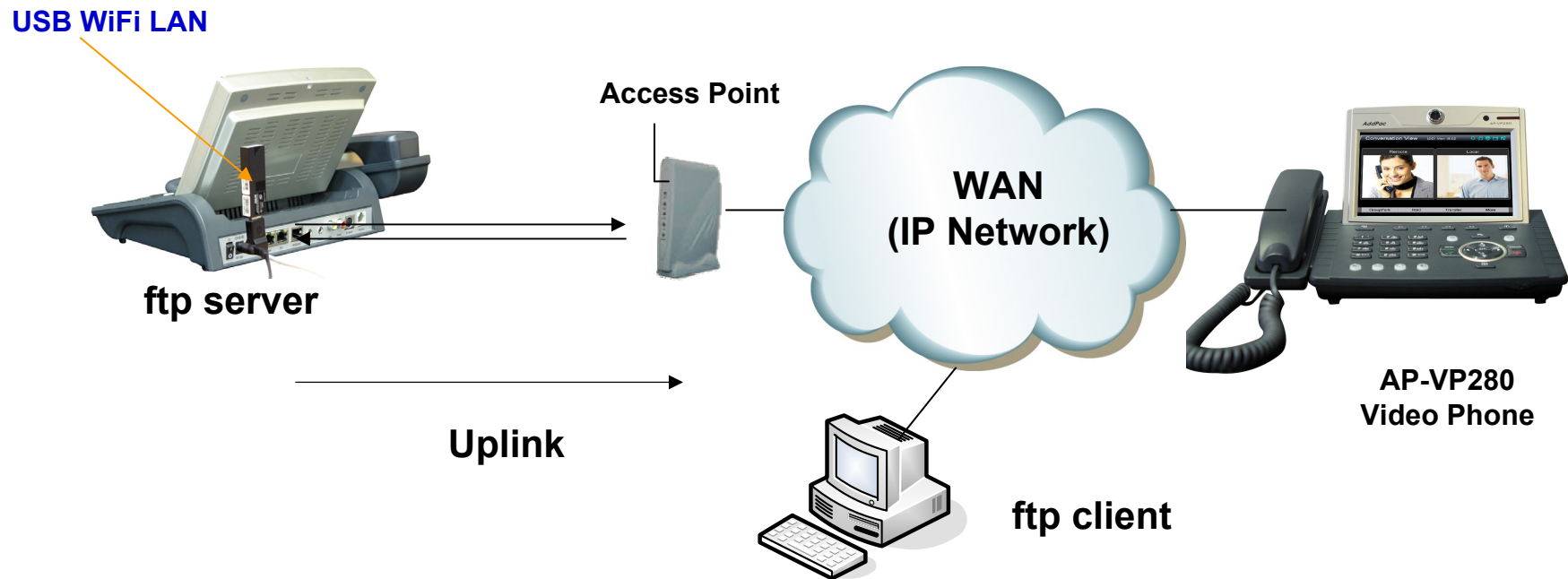
**BSS (Base Station Set) Configuration**

# IBSS Network Diagram



**IBSS (Independent Base Station Set) Configuration**

# Performance Estimation



Video Communication : bidirectional 2Mbps

Data throughput : ftp get 330 ~ 450kB/s, put 330kB/s



# Thank you!

**AddPac Technology Co., Ltd.**  
Sales and Marketing

Phone +82.2.568.3848 (KOREA)

FAX +82.2.568.3847 (KOREA)

E-mail [sales@addpac.com](mailto:sales@addpac.com)