



AP1850 Digital VoIP Gateway

VoiceFinder AP1850 is a new cutting edge BcN (Broadband Convergence Network) Digital VoIP gateway supporting maximum four (4) digital E1/T1 voice interface. Digital interface of AP1850 provide an optimized call scenario when it interoperates with legacy PBX. Compact cost effective design and system architecture of AP1850 provides customer satisfaction in high quality, performance and system reliance. VoiceFinder AP1850 is a mid-range VoIP gateway providing four(4) digital E1/T1 interfaces. It is suitable for general enterprises, large public offices. It has functions as a media gateway which interoperates with IP-PBX and high capacity legacy PBX. Especially AP1850 provides an optimal solution of VoIP communications in telephony environments that using digital telephone lines and PBX to get connect with a head office. AP1850 in the aspect of hardware architecture is designed to provide a high performance service as a media gateway. It provides several LEDs in front panel so that various operational status of VoIP ports can be checked. Two of 10/100Mbps fast Ethernet port and RS232C console interface on front panel of A1850 are the base for delivering various network services such as LAN-to-LAN routing, Bridge and NAT/PAT service etc

Various VoIP gateways of AddPac are approved for its capability and reliability in world wide markets. This AP1850 will be an excellent choice for BcN (Broadband Convergence Network) environment by supporting concurrent triple stack such as H323, SIP, MGCP and QoS (Quality of Service) for high quality of communication.



AP-N1-T1



AP-N1-2T1



AP-N1-E1



AP-N1-2E1

APOS Internetworking Software

APOS™(AddPac Internetworking Operating System) is AddPac's unique software which supports data, voice, video and security. It provides scalability, reliability, stability and QoS for internetworking solutions. It also provides optimized performance and industry standard network functionality with easy-to-use, easy-to-installation and maintenance.

Product Highlights

- Powerful High-End RISC Microprocessor Architecture
- Two(2) VoIP Module Slot for VoIP Interface Module
- 1-Port T1, 2-Port T1, 1-Port E1, 2-Port E1 Digital VoIP Interface Module Support
- VoIP Module Hot-Swap Function Support
- Two(2) 10/100Mbps Fast Ethernet Interface
- RS-232C (RJ45) Console Port for CLI Interface
- Front Panel LED for Real-time Port Status Monitoring
- Concurrent Triple Stack of SIP, H.323, MGCP
- Multi Protocol Routing for LAN and WAN Access
- Voice Processing Features
 - VAD, DTMF, CNG, G.168, T.38 G3 Fax Relay
 - G.723, 729A, G.726, 711
- High-performance IP-Routing Capability with Reliability
- Static and IEEE 802.1Q VLAN Routing Protocols including VRRP
- SNMP MIB V2 for Network Management
- Standard & Extended Access List for Security
- Essential Scalability Features such as DHCP Server & Relay, NAT/PAT, IEEE Transparent Bridging, and Debugging/Diagnostics, etc.
- Remote Firmware Upgrade Through FTP & TFTP Protocol
- CISCO-style CLI (Command Line Interface)
- APOS Guarantees Scalability, Reliability, Stability

AP1850 Applications

- Inter-Office Internet Telephony System
- Digital VoIP Gateway for Large Enterprises
- Digital VoIP Gateway for Call Center
- VoIP Gateway for IP Telephony
- Media Gateway

Hardware Specification

- High-End RISC Microprocessor (CPU)
- Memory
 - System memory 512Mbyte NAND Flash Memory
 - Main memory 1Gbyte DDR2
- Two(2) VoIP Slots for Digital VoIP Interface
- VoIP Interface Modules with Hot-Swap Function
 - AP-N1-E1 1-port E1 Interface Module (1 x RJ45)
 - AP-N1-2E1 2-port E1 Interface Module (2 x RJ45)
 - AP-N1-T1 1-port T1 Interface Module (1 x RJ45)
 - AP-N1-2T1 2-port T1 Interface Module (2 x RJ45)
- Ethernet Interface
 - 10/100Mbps 2-port Ethernet (RJ-45)
- Console Port
 - RS-232C 1-port Console (RJ-45)

Power & Operational environment

- Power Supply VAC 110~220V, 50/60Hz, 5V, 8A, 40Watt
- Temperature 0°C~+45°C (operating)
- Temperature -40°C~+85°C (storage)
- Humidity 5%~95%

Dimensions

- H x W x D : 55 x 340 x 267 (mm)
- Weight : 2.6 (Kg)

IP Routing Protocol

- Static and IEEE802.1Q VLAN Routing

WAN Protocol

- Broadband IP Network
- PPPoE
- Standard Compliant WAN Network Protocol

Voice over IP Service

- H.323, SIP, MGCP Triple Concurrent VoIP Signaling Protocol
- ISDN-PRI, R2 Digital Interface Signaling Protocol
- VAD, DTMF, CNG, G.168, T.38 FAX Relay
- Voice Codec : G.723, G.729, G.726, G.711, etc
- High Level VoIP Signaling Debugging Features
- Polarity Inversion Feature
- Various VoIP Features
- Interoperable with Diverse VoIP Gateways
- Interoperable with Diverse VoIP Gatekeeper, SIP Proxy, MGC

Operation & Management

- Performance Analyzing (Process, CPU, Interface)
- Configuration Backup and Restore for APOS Management
- Debugging and Diagnosis Features
- System Booting/Rebooting through Watch Dog
- Data Logging Features
- IP Traffic Statistics through Accounting
- Debugging/Diagnostic

Network Management

- Standard SNMP Agent (MIB v2) Support
- Console, Telnet, Web Based Management
- Remote Download via FTP/TFTP
- Remote Firmware Upgrade using FTP/TFTP

Traffic QoS Control

- Traffic QoS Control Feature For Services
- Voice, Data Prioritizing Control
- Various QoS Algorithm Support

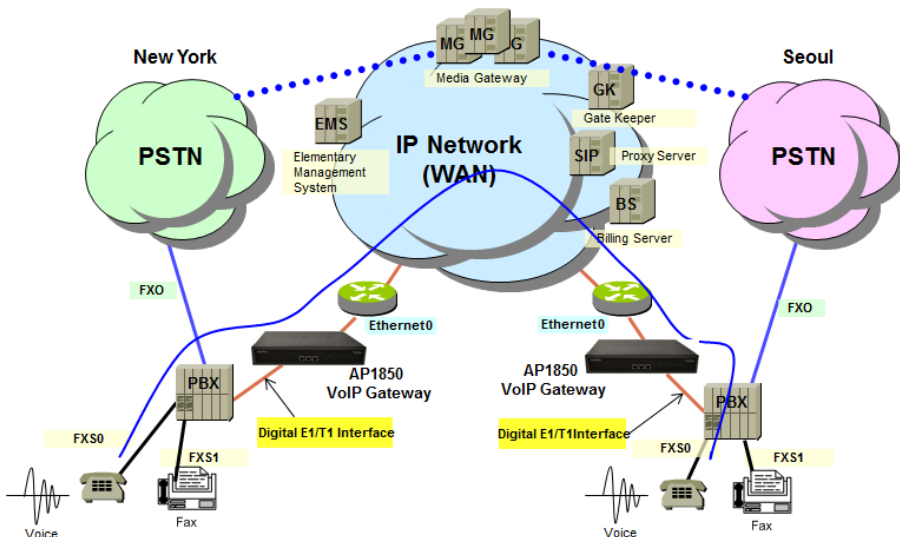
Security Feature

- IP Packet Filtering / Access List
- Access Control and Data Protections
- Enable/Disable for Specific Protocols
- Multi-level User Account Management
- Auto-disconnect for Telnet/Console Sessions
- PPP User Authentication Support
- Password Authentication Protocol (PAP)
- Challenge Handshake Authentication Protocol (CHAP)

Other Features

- DHCP Server and Relay
- Network Address Translation (NAT)
- Port Address Translation (PAT)
- Transparent Bridging (IEEE Standard)
 - Spanning Tree Bridging Protocol
 - Concurrent Routing and Bridging
- NTP (Network Time Protocol)
- Cisco Style Command Line Interface
- Standard Compliant Network Protocol
- AddPac Proprietary IP Sharing
- MAC Address Filtering
- DNS Proxy

AP1850 Network Diagram



Ordering Information

- AP1850-01 : AP1850 Standard Configuration
- Two(2) Fast Ethernet Port
 - One(1) Console Port
 - RISC CPU,
 - 512MB NAND Flash
 - 1Gbyte DDR2
 - APOS v8.xx Manual
- CAB-LAN Ethernet Cable
 - CAB-CON RS-232C Console Cable
 - AP-N1-E1 1-port E1 Module
 - AP-N1-2E1 2-port E1 Module
 - AP-N1-T1 1-port T1 Module
 - AP-N1-2T1 2-port T1 Module