

# AP-WP100 WiFi SIP Phone

High Performance WiFi SIP Phone Solution



AP-WP100

WiFi SIP Phone Simple Interworking Solution  
for Legacy PBX

**AddPac**

**AddPac Technology**

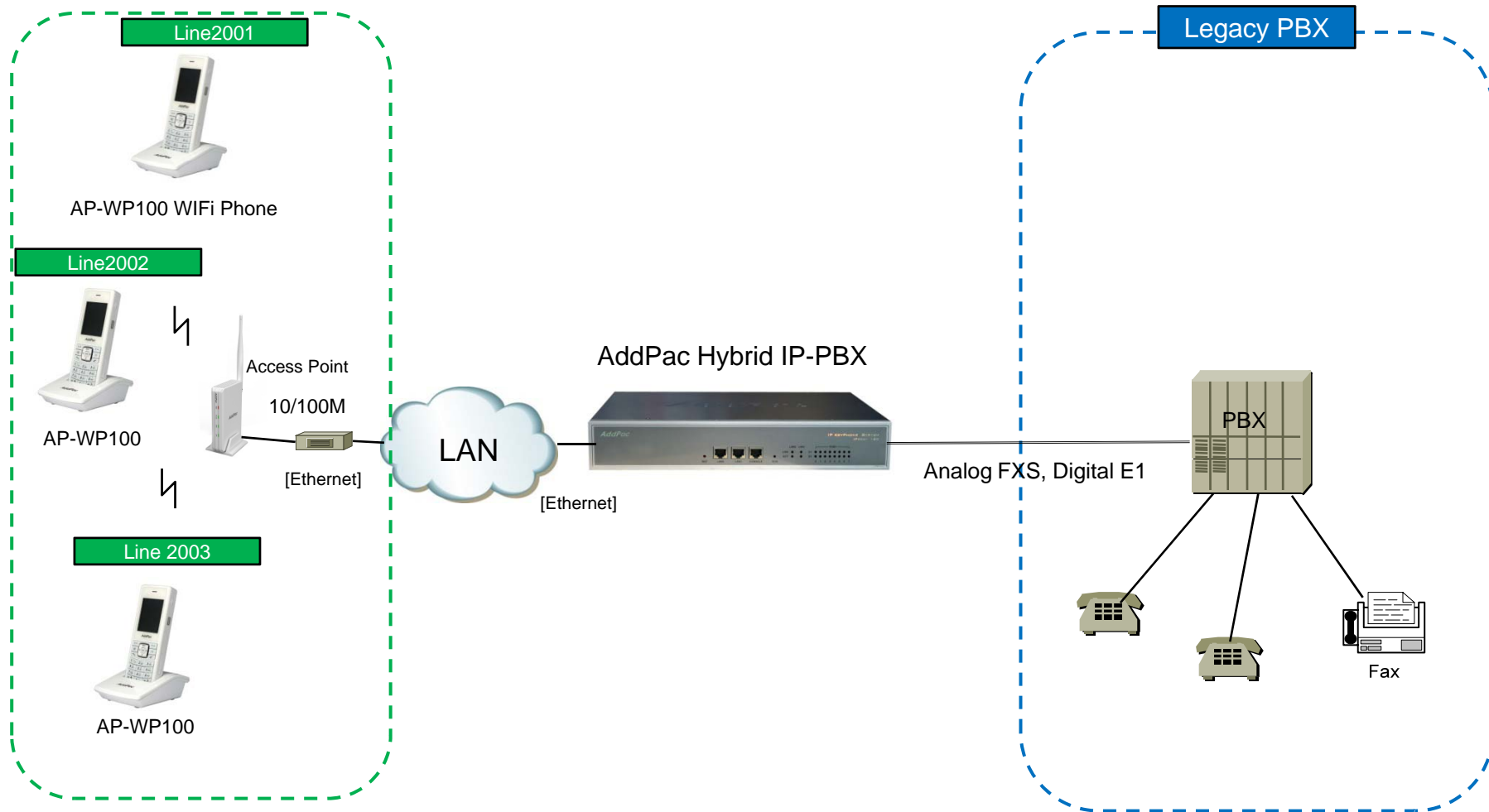
2013, Sales and Marketing

[www.addpac.com](http://www.addpac.com)

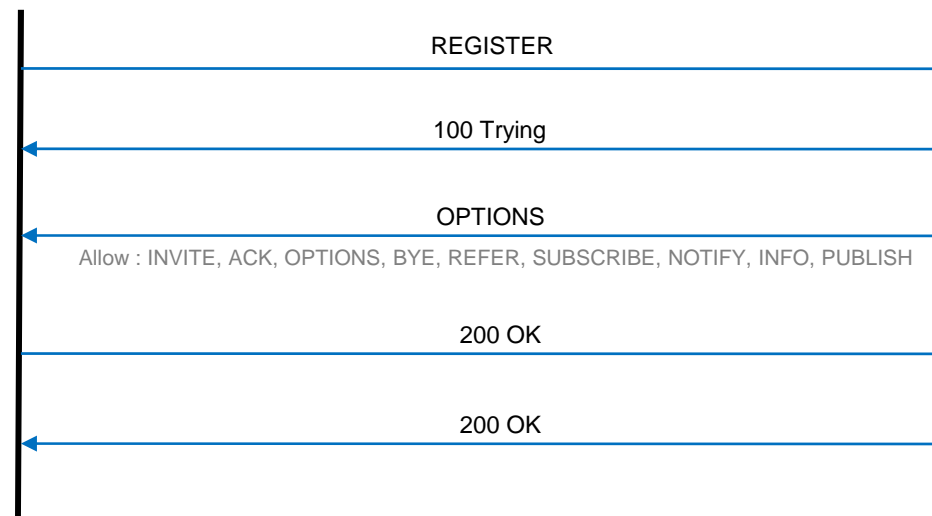
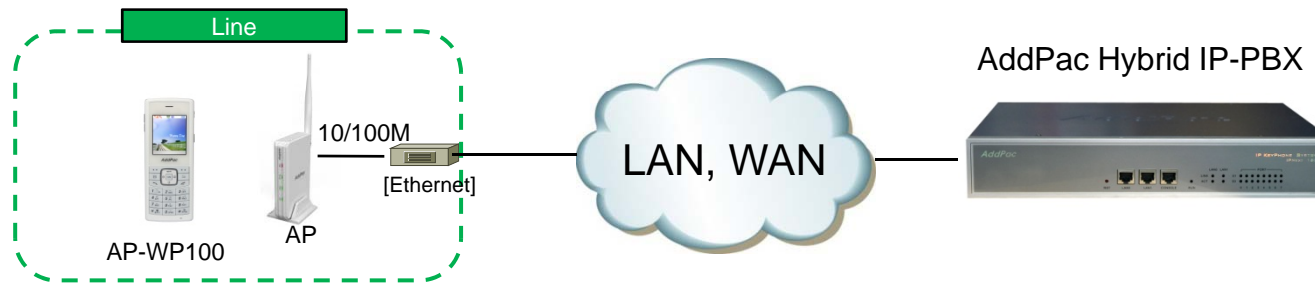
# Contents

- Network Diagram
- WiFi SIP Phone Register to Hybrid IP-PBX
- SIP Message Flow for WiFi Phone Interworking to Legacy PBX
- AddPac Hybrid IP-PBX Solution

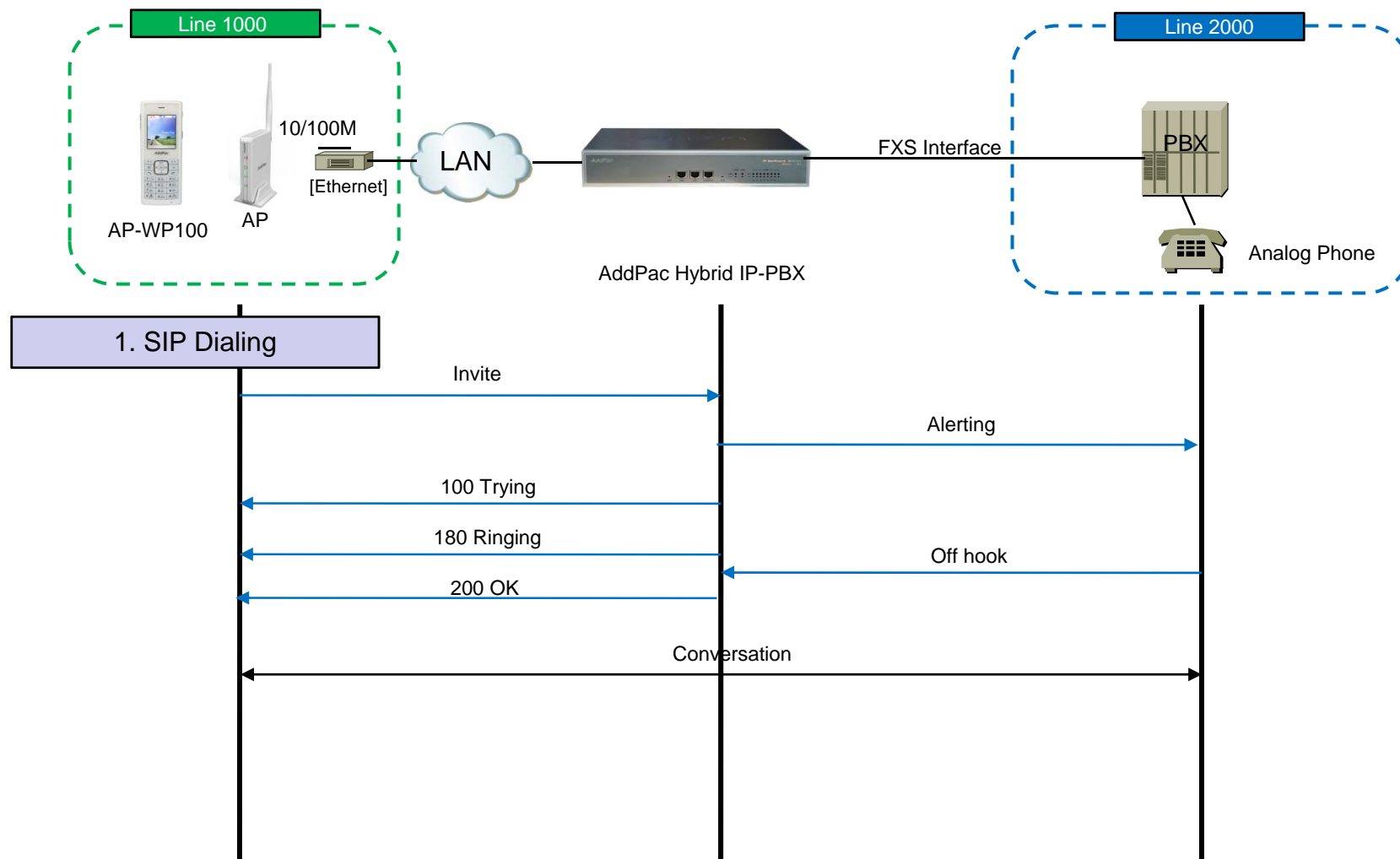
# Network Diagram



# SIP Register



# SIP Message Flow



# IPNext Hybrid IP-PBX Solution for SMB







**Hybrid IP-PBX Solution**

- IPNext180 IP-PBX
- IPNext185 IP-PBX
- IPNext190 IP-PBX
- IPNext210 IP-PBX
- IPNext230 IP-PBX
- IPNext250 IP-PBX

[Learn More >](#)

The advertisement features a collection of AddPac IP-PBX hardware. On the left, there are several IP phones of various models. In the center, there are three stacked IP-PBX units. On the right, there is a large, multi-bay IP-PBX rack system. The background is a teal gradient.

# IPNext SMB IP-PBX Comparison Table

Model		IPNext190	IPNext187	IPNext185	IPNext180
Service Features					
Registration User Number		150	150	240	100
Concurrent Call User Number		50	50	120 (Up to 4E1)	30
IPv4/IPv6 Dual Stack Support		Support	Support	Support	Support
VoIP Signaling	Internal	SIP	SIP	SIP	SIP
	External	H.323/SIP	H.323/SIP	H.323/SIP	H.323/SIP
Powerful IVR, UMS, Media Service, User Presence Service		Support	Support	Support	Support
RTP Proxy Service (IPv6, Private IP)		Support	Support	Support	Support
LAN Port		2	2	2	2
VoIP Module Slots for PSTN		4 Slots (8 Port Module)	3 Slots (8 Port Module)	2 Slots (8 Port Module)	2 Slots (8 Port Module)
VoIP Interface		FXS,FXO,E1/T1	FXS,FXO,E1/T1	FXS,FXO,E1/T1	FXS,FXO,E1/T1



# IPNext180 Hybrid IP-PBX



# Product Overview

## IPNext180 Next Generation Hybrid IP-PBX System

- IP based Advanced Hybrid IP-PBX Solution
- IP Multimedia Telephony Solution for Small Office
- PSTN Interface (FXO, FXS) Support
- Powerful Management and User Friendly Features
- Fault Tolerant and Scalability Architecture
- High-performance Video, Audio, and Voice Service
- Firmware Upgradeable Architecture
- IVR Service with Scenario Editor
- Voice Mailing Service
- Presence Service for High-End IP Key Phone, UC
- RTP Proxy Service for Private IP service
- SIP, H.323 Signaling for Outbound Calls
- Various Call Scenario (Call Pickup, Call Park, Call Transfer, etc)
- Various IP Terminal Support

# Hardware Specification

IPNext180 Next Generation Hybrid IP-PBX System

64bit  
CPU

- RISC Microprocessor Computing Power
- Main Chassis
  - Fixed Network Interface
    - Two(2) 10/100Mbps Fast Ethernet
    - One(1) RS-232C Console (RJ45)
  - Two(2) VoIP Module Slots for FXS, FXO etc



# Hardware Specification

IPNext180 Next Generation Hybrid IP-PBX System

64bit  
CPU

DSP

## IPNext180 Front Side



LAN0(10/100Mbps)

Console Port

LAN1 (10/100Mbps)

# Hardware Specification

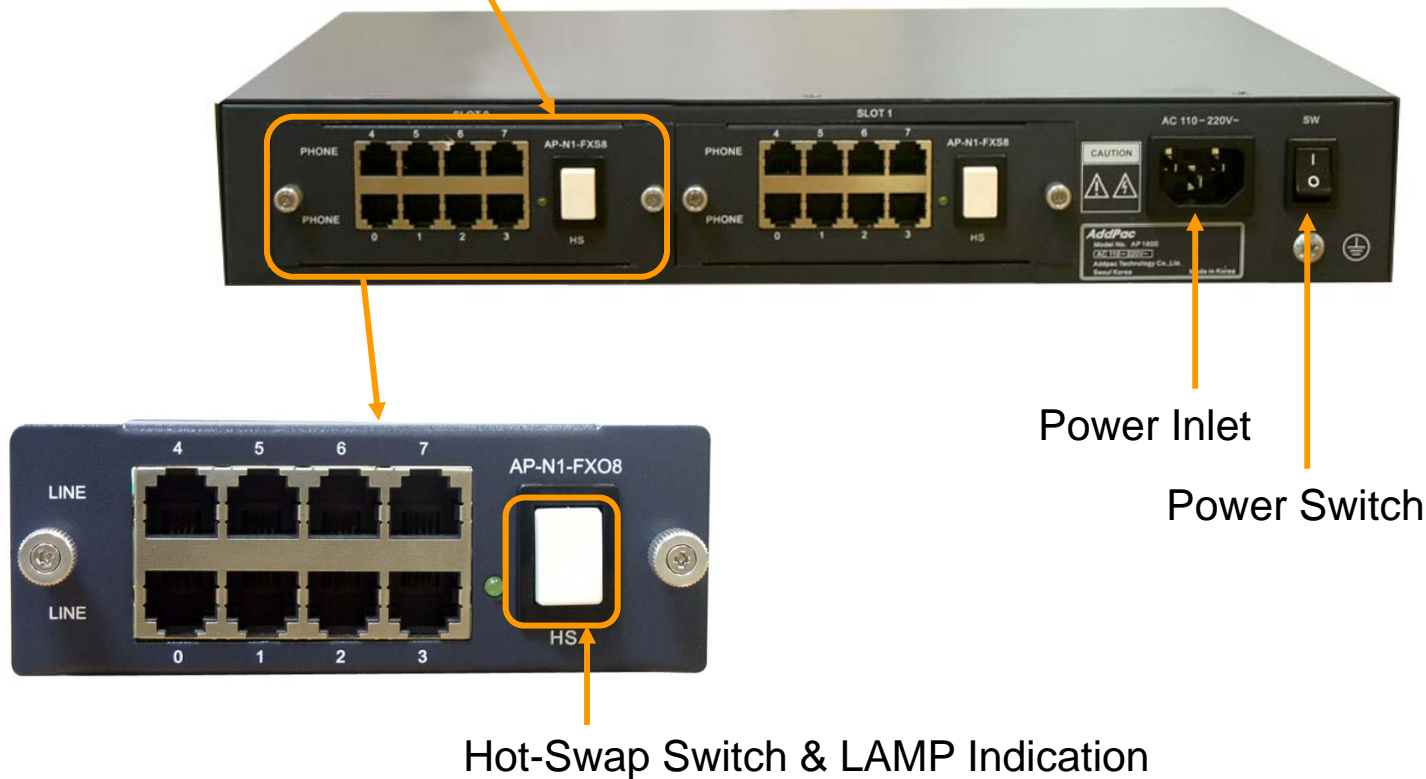
IPNext180 Next Generation Hybrid IP-PBX System

RISC  
CPU

DSP

## IPNext 180 Back Side

PSTN Interface Module





# Thank you!

**AddPac Technology Co., Ltd.**  
Tech. Solution

Phone +82.2.568.3848 (KOREA)

FAX +82.2.568.3847 (KOREA)

E-mail [ts@addpac.com](mailto:ts@addpac.com)