

AP-SNR1004

Network DVR

High-performance Network DVR Solution



Preliminary Product Overview

(Without notice, following described technical spec. can be changed)

AddPac

AddPac Technology

Sales and Marketing

AP-SNR1004 Network DVR

- Product Overview
- Product Highlight
- Hardware Specification
- Software Service
- Network Service and Features
- Network DVR Components
- Application Service
- Ordering Information



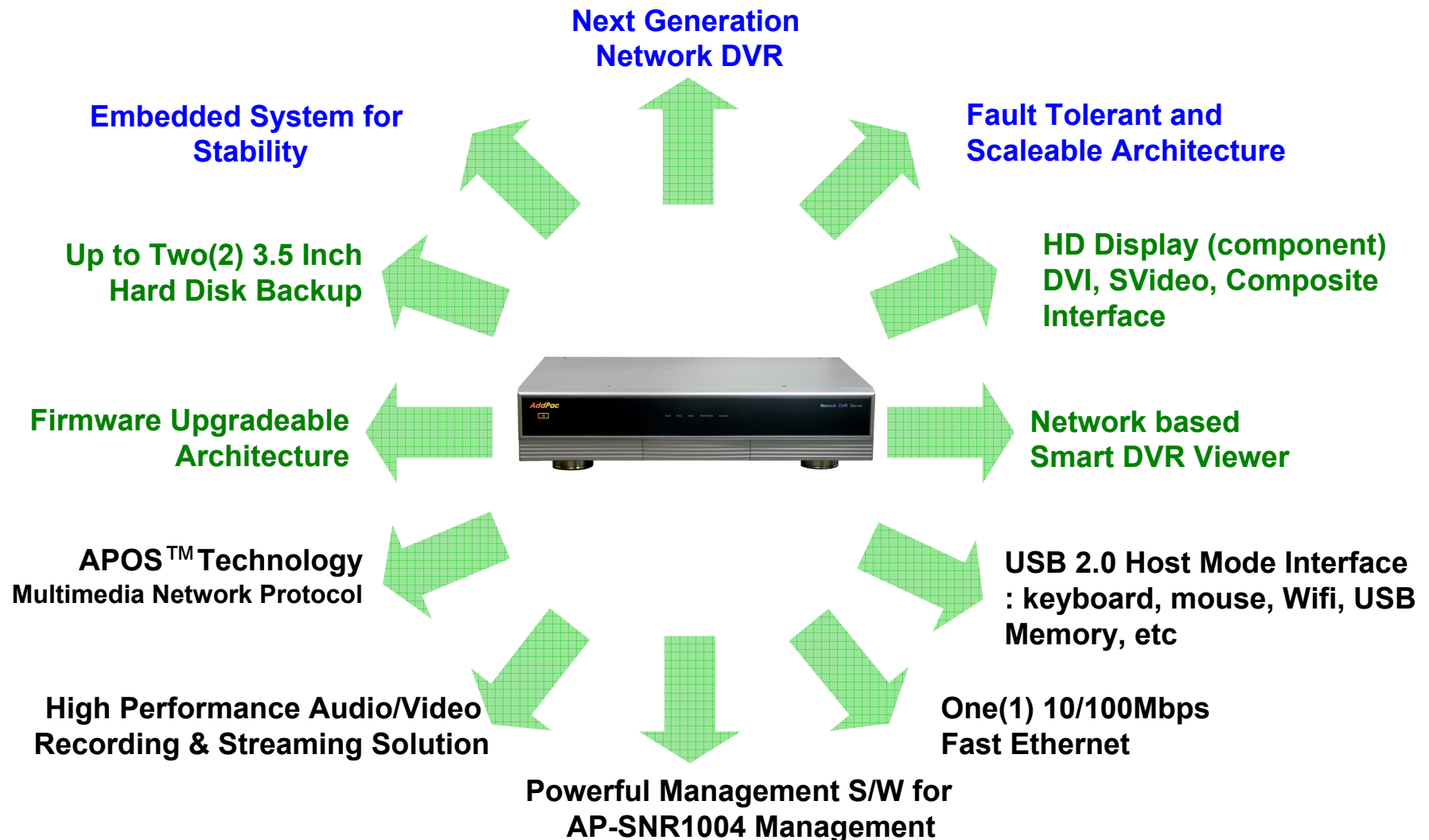
Product Overview

AP-SNR1004 Network DVR

- High-Performance 4 Channel Network DVR Features
- High Quality HD Display Support (Direct Attached)
 - 720P Component Out Support
 - DVI Out Support
 - Composite, S-Video Out Support
 - Various Display Layout Support
- Network based Smart DVR Viewer Support (MS-Window S/W) : 1 User
- OSD based Smart DVR Managing Function Support
- Network based Smart DVR Manager Support (MS-Window S/W)
- Network based File Back Manager Support (MS-Window S/W)
- Powerful Management and User Friendly Features
- Fault Tolerant and Scalability Architecture
- High-performance Audio and Video Service
- Firmware Upgradeable Architecture
- Up to 2 x 3.5Inch Hard Disk Backup (IDE Type)
- One(1) 10/100Mbps Ethernet Interface
- USB Host Mode Interface Support (Front 1ea, Back 1ea)

Product Highlights

AP-SNR1004 Network DVR



AddPac

www.addpac.com

Hardware Specification

AP-SNR1004 Network DVR

RISC
CPU

High-End
VP

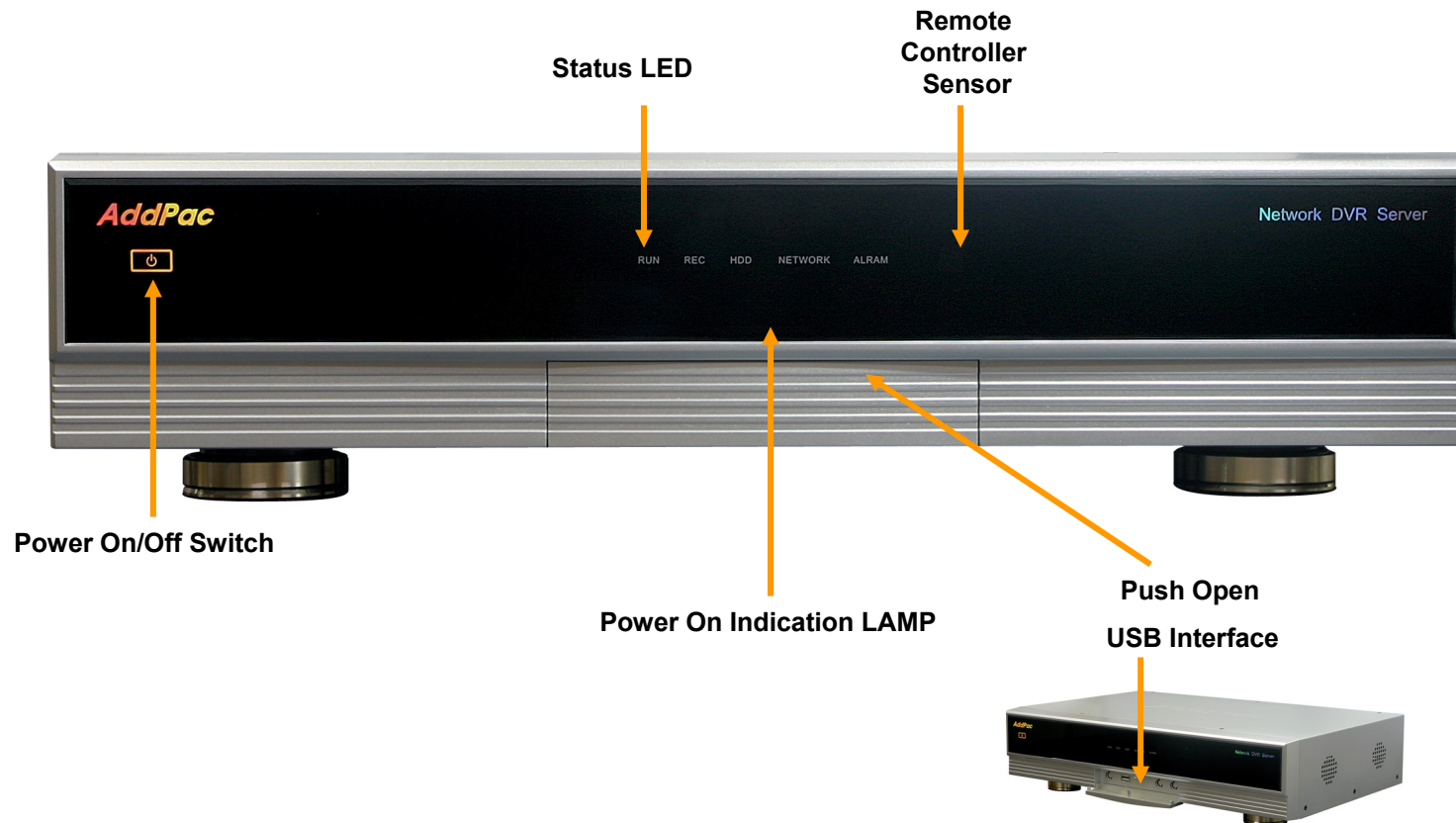
- **RISC + Video Processor Computing Power**
- **Main Chassis**
 - Network Interface
 - One(1) 10/100Mbps Fast Ethernet
 - Video Interface
 - Composite/S-video Video Output
 - DVI Video Output
 - Component Video Output for HDTV(720P)
 - Audio Interface
 - One(1) Audio 3.5mm Stereo Input Channel
 - Two(2) Audio RCA Output Channel (Left, Right)
 - USB 2.0 Host Mode Interface for Mouse, etc (Front 1ea, Back 1ea)
 - Up to Two(2) Hard Disk (IDE type)

Hardware Specification

AP-SNR1004 Network DVR

High-End
RISC
+Video
Processor

AP-SNR1004 Front Side

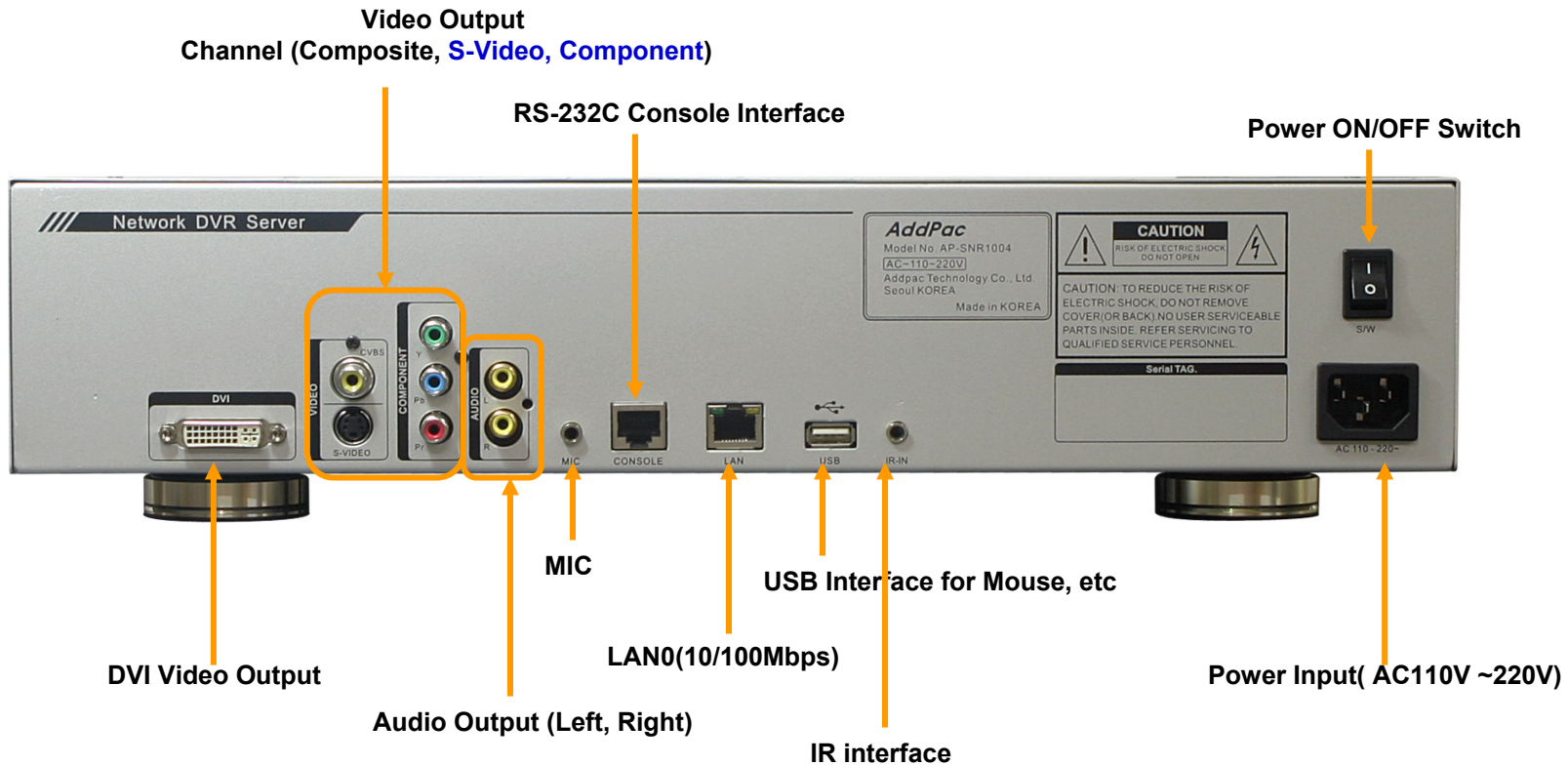


Hardware Specification

AP-SNR1004 Network DVR

High-End
RISC
+Video
Processor

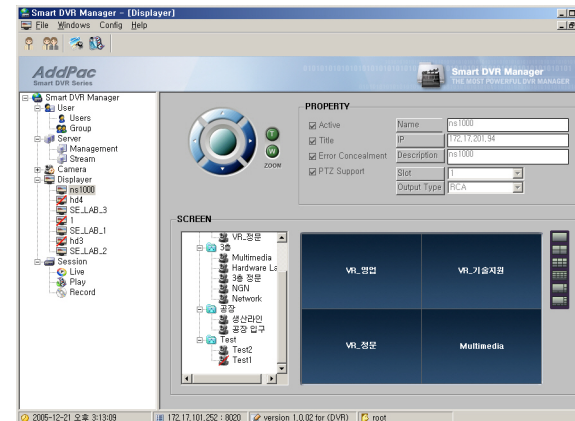
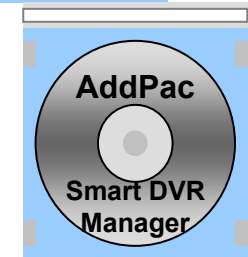
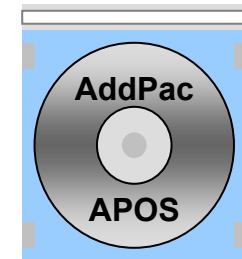
AP-SNR1004 Back Side



Software Service

AP-SNR1004 Network DVR

- **Built-in AddPac APOS Internetworking Software**
 - Scalability, Functionality, and Stability Features
 - Advanced Standalone DVR Recording & Streaming Features
 - QoS Control Features
- **Firmware Upgradeable Architecture**
- **Industry Standard Network Protocol Features**
- **Highly User Friendly Management Features**
 - OSD(720P, S-Video, Composite, DVI)
 - Smart DVR Manager



Network Service and Features

AP-SNR1004 Network DVR

Basic Network Protocols

- ARP, IPv4, TCP, UDP, ICMP, SCTP, IGMP, MLD

Routing Protocol

- IPv4 : Static

Service Protocol

- FTP, Telnet, TFTP, DHCP Server/Relay, SNMP Server
- CDP (Cisco Discovery Protocol)
- DNS Resolver , DDNS(nsupdate)
- Bridge
- Syslog

IPv4 Address Configuration

- Fixed (Static)
- DHCP
- PPPoE

Miscellaneous

- Standard & Extended IPv4 Access List
- Multi-level User Account Management
- IP accounting



Network DVR Components

AP-SNR1004 Network DVR

- DVR Viewer : Option
 - Smart DVR Viewer (Client, MS-Window)
 - Smart DVR Manager (Client, MS-Window)
- PC based DVR Backup Manager : Option
- IP Built-In Camera : AP-IPC series
- Network Camera : AP-NC series



Smart DVR Viewer

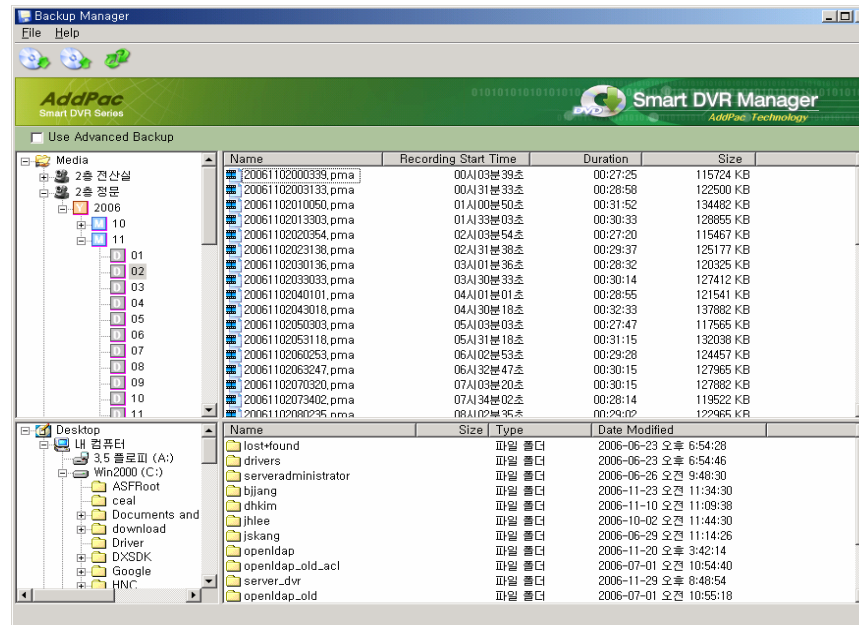
AP-SNR1004 Network DVR



- Multi-Standalone DVR Server Support
- PAN/TILT/ZOOM Control, Layout & Screen Mode Change
- Error Concealment Support
- Motion Detection & Tracking
- Multi-Live View, Multi-Recording View, Time Synchronization View
- Fast Search, Jog Shuttle Slow Motion & Rewind
- Intelligent Search using Motion Detection
- Recording ZOOM View
- Audio/Video(MPEG4) Support.

Smart DVR Backup Manager

AP-SNR1004 Network DVR



- PC based DVR Backup Software for AddPac DVR Solution
- User can backup DVR data in DVR to Local PC by using DVR Backup Manager.
- Support the Advanced Backup Function
- Support the Backup Data Restore Function
- DVR Burning Support

IP Camera : AP-IPC50M

- **High-end Programmable DSP Hardware Architecture**
- **Network Interface**
 - One(1) 10/100Mbps Fast Ethernet
- **Power over Ethernet Interface : Option**
- **High Quality MPEG-4 Video Codec**
- **Up to D1 Resolution**
- **High quality Audio and Voice Interface**
- **I/O Interface**
 - 2 Alarm Input, 1 Relay



IP Camera : AP-IPC100M

- **High-end Programmable DSP Hardware Architecture**
- **Network Interface**
 - One(1) 10/100Mbps Fast Ethernet
- **Power over Ethernet Interface : Option**
- **High Quality MPEG-4 Video Codec**
- **Up to D1 Resolution**
- **High quality Audio and Voice Interface**
- **Varifocal Lens**
- **I/O Interface**
 - 2 Alarm Input, 1 Relay



IP Camera : AP-IPC200M

- **High-end Programmable DSP Hardware Architecture**
- **Network Interface**
 - One(1) 10/100Mbps Fast Ethernet
- **PAN/TILT Controllable**
- **Optical 10 x Zoom Support**
- **High Quality MPEG-4 Video Codec**
- **Up to D1 Resolution**
- **High quality Audio and Voice Interface**
- **I/O Interface**
 - 2 Alarm Input, 1 Relay



IP Camera : AP-IPC210M

- **High-end Programmable DSP Hardware Architecture**
- **Network Interface**
 - One(1) 10/100Mbps Fast Ethernet
- **PAN/TILT Controllable**
- **Optical 10 x Zoom Support**
- **High Quality MPEG-4 Video Codec**
- **Up to D1 Resolution**
- **High quality Audio and Voice Interface**
- **I/O Interface**
 - 2 Alarm Input, 1 Relay



IP Camera : AP-IPC250M

- **High-end Programmable DSP Hardware Architecture**
- **Network Interface**
 - One(1) 10/100Mbps Fast Ethernet
- **PAN/TILT Controllable**
- **Optical 10 x Zoom Support**
- **High Quality MPEG-4 Video Codec**
- **Up to D1 Resolution**
- **Vandal Proof Housing for Outdoor Application**
- **High quality Audio and Voice Interface**
- **I/O Interface**
 - 2 Alarm Input, 1 Relay



IP Camera : AP-IPC300M

- **High-end Programmable DSP Hardware Architecture**
- **Network Interface**
 - One(1) 10/100Mbps Fast Ethernet
- **PAN/TILT Controllable**
- **Optical 30 x Zoom Support**
- **High Quality MPEG-4 Video Codec**
- **Up to D1 Resolution**
- **Vandal Proof Housing for Outdoor Application**
- **High quality Audio and Voice Interface**
- **I/O Interface**
 - 2 Alarm Input, 1 Relay



Network Camera : AP-NC500

- **High-end Programmable DSP Hardware Architecture**
- **Network Interface**
 - One(1) 10/100Mbps Fast Ethernet
 - One(1) USB 2.0 Interface
- **Powerful Video Interface**
 - BNC Video Input : AP-NC500E Model
 - BNC Video Output : AP-NC500D Model
- **High quality Audio and Voice Interface**
 - Stereo Audio Input/Output Connector
- **Camera Control Interface**
 - One(1) RS-232C, RS422 Interface for External Camera Control
- **I/O Interface**
 - 2 Alarm Input, 1 Relay

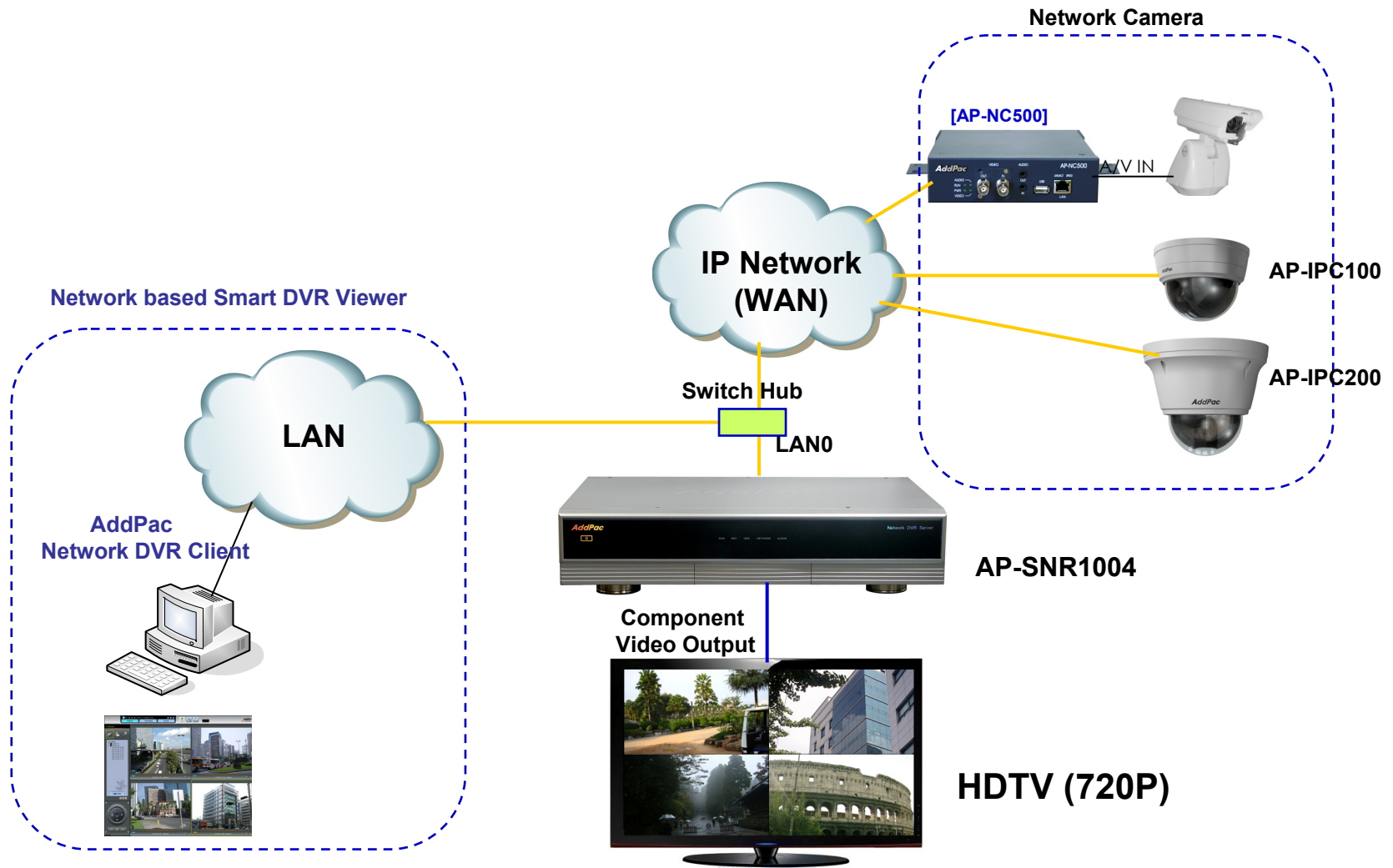


Application Service

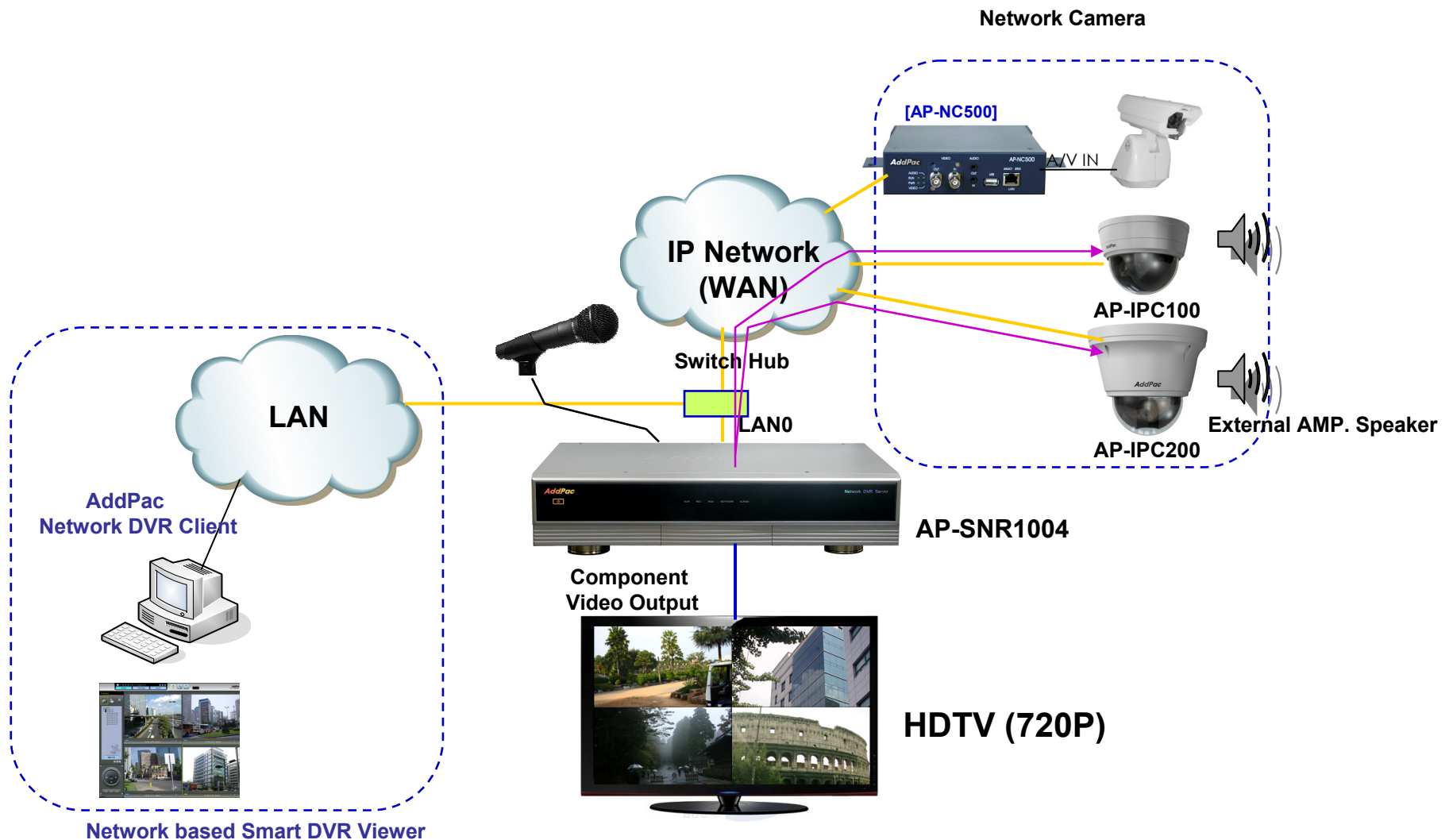
- **Network DVR Standard Application**
- **Remote DVR broadcasting Application**
- **Multiple Standalone DVR Application**



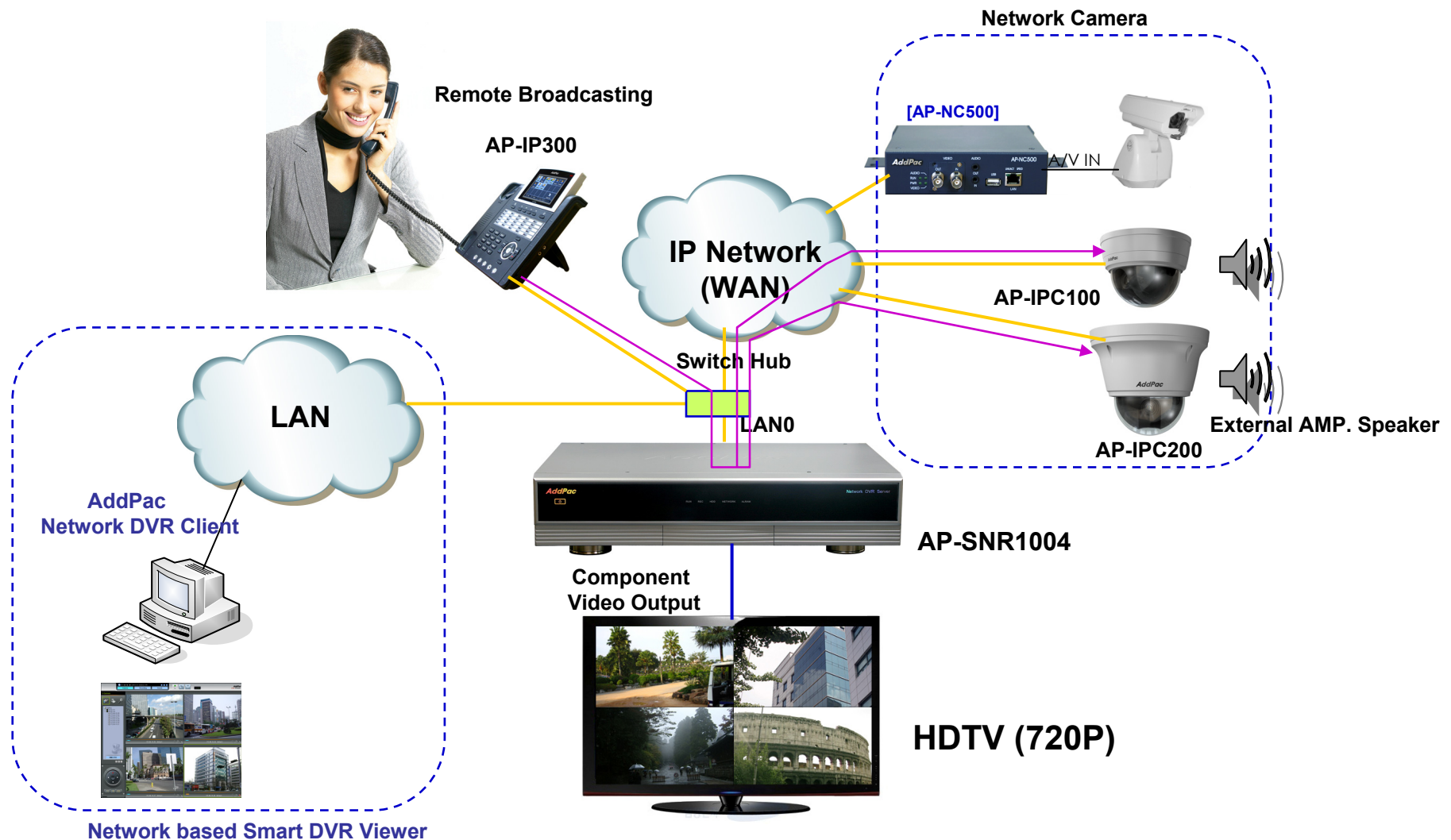
Network DVR Standard App.



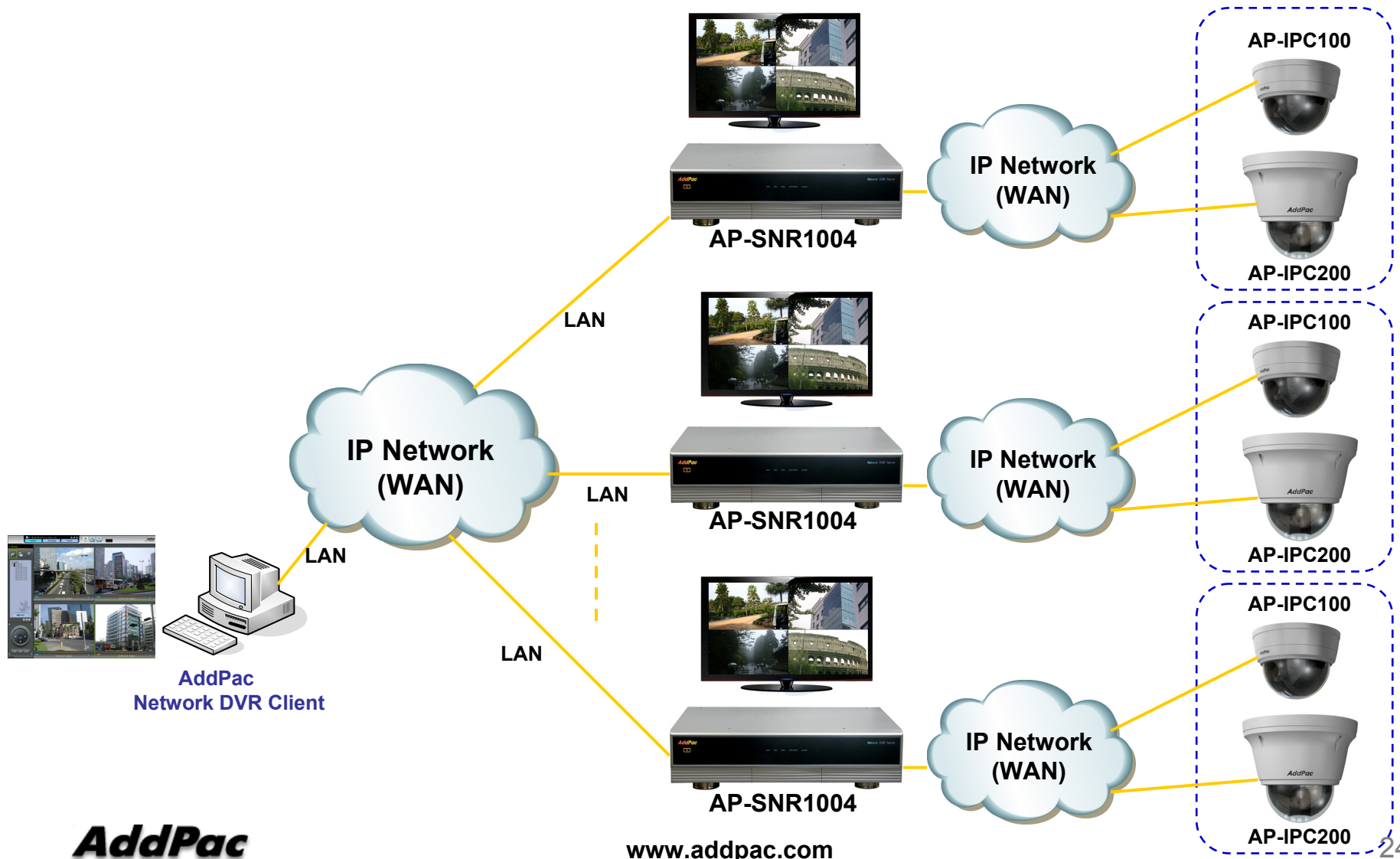
Remote Broadcasting App. (CASE1)



Remote Broadcasting App. (CASE2)



Multiple Network DVR App.



AddPac

www.addpac.com

Ordering Information

- **Network DVR AP-SNR1004 Hardware**
 - AP-SNR1004 Main Body
 - Including Network Cable Set & Power Supply Cable, etc.
 - Hard Disk (2x3.5 Inch IDE Type HDD)
- **Built-in APOS Internetworking Software for AP-SNR1004**
- **Including 1 Year Hardware Warranty**
- **Product Documents**
 - Install and Operation Guide (PDF)
- **Pricing**
 - AddPac Technology Regional Sales Manager
 - Authorized Sales and Marketing Representatives
 - Please Contact www.addpac.com



Thank you!

AddPac Technology Co., Ltd.
Sales and Marketing

Phone +82.2.568.3848 (KOREA)

FAX +82.2.568.3847 (KOREA)

E-mail sales@addpac.com