



# AP700P™

## VoIP Gateway Series

High Performance VoIP Gateway Solution

### Extended Dial Pattern Service (SIP)



# **AddPac**

**AddPac Technology**

2012, Sales and Marketing

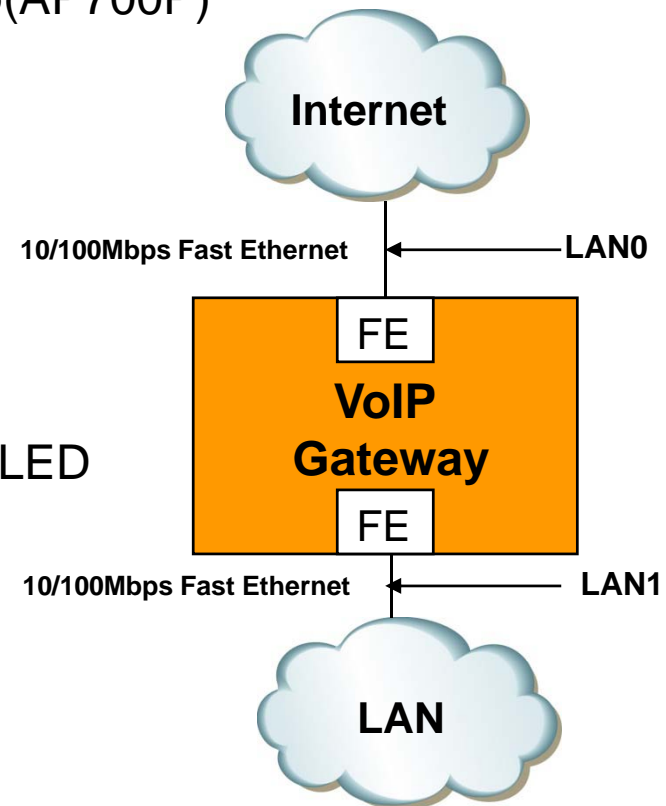
[www.addpac.com](http://www.addpac.com)

# Contents

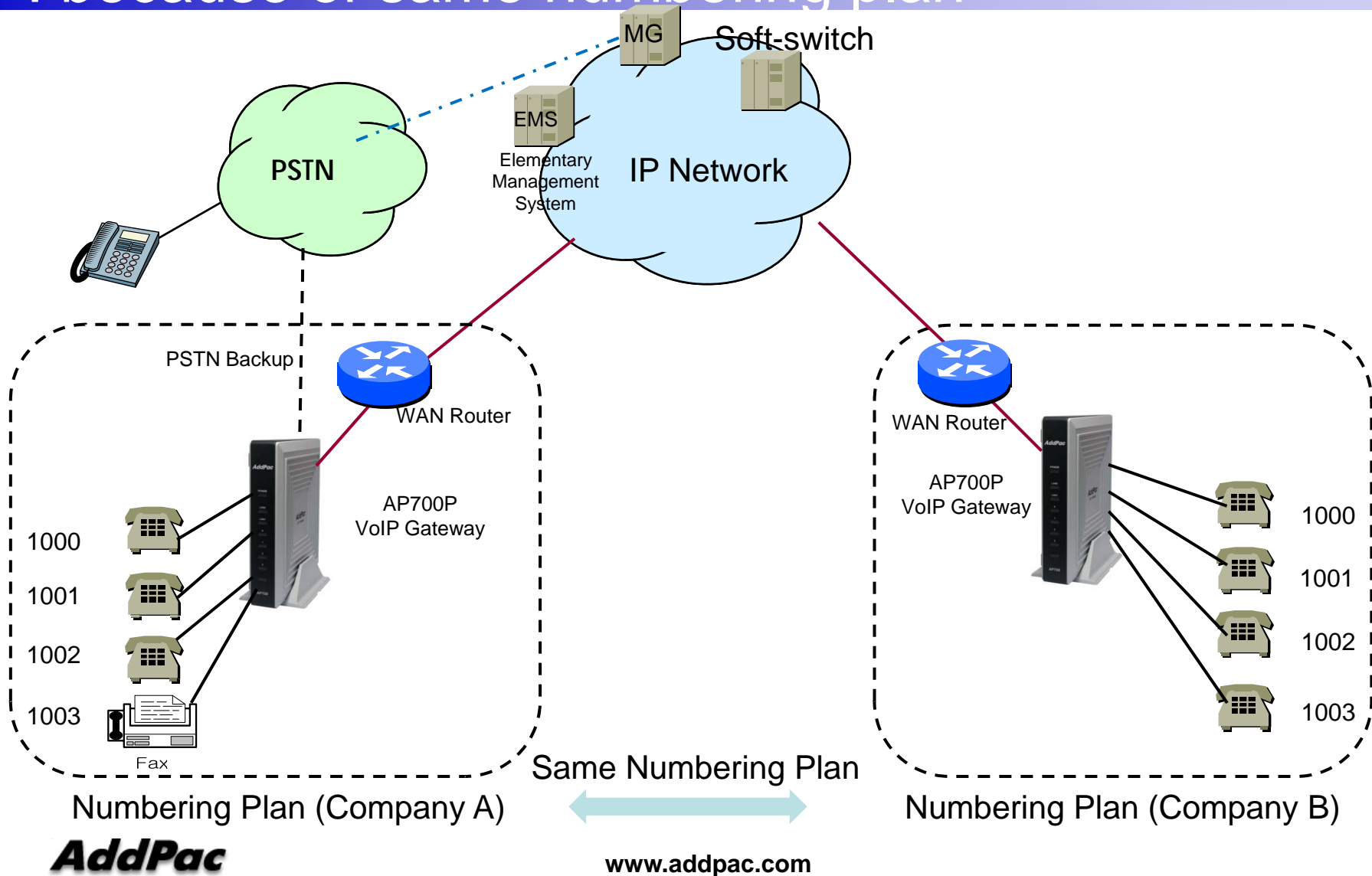
- Hardware Specification
- Network Service Diagram
  - Normal Mode
  - Extended Dial Pattern Mode
- Smart Web Manager Configuration for Extended Dial Pattern Mode
- “REGISTER” Message Example
- “INVITE” Message Example : Inbound Call Message from Soft-switch

# Hardware Specification

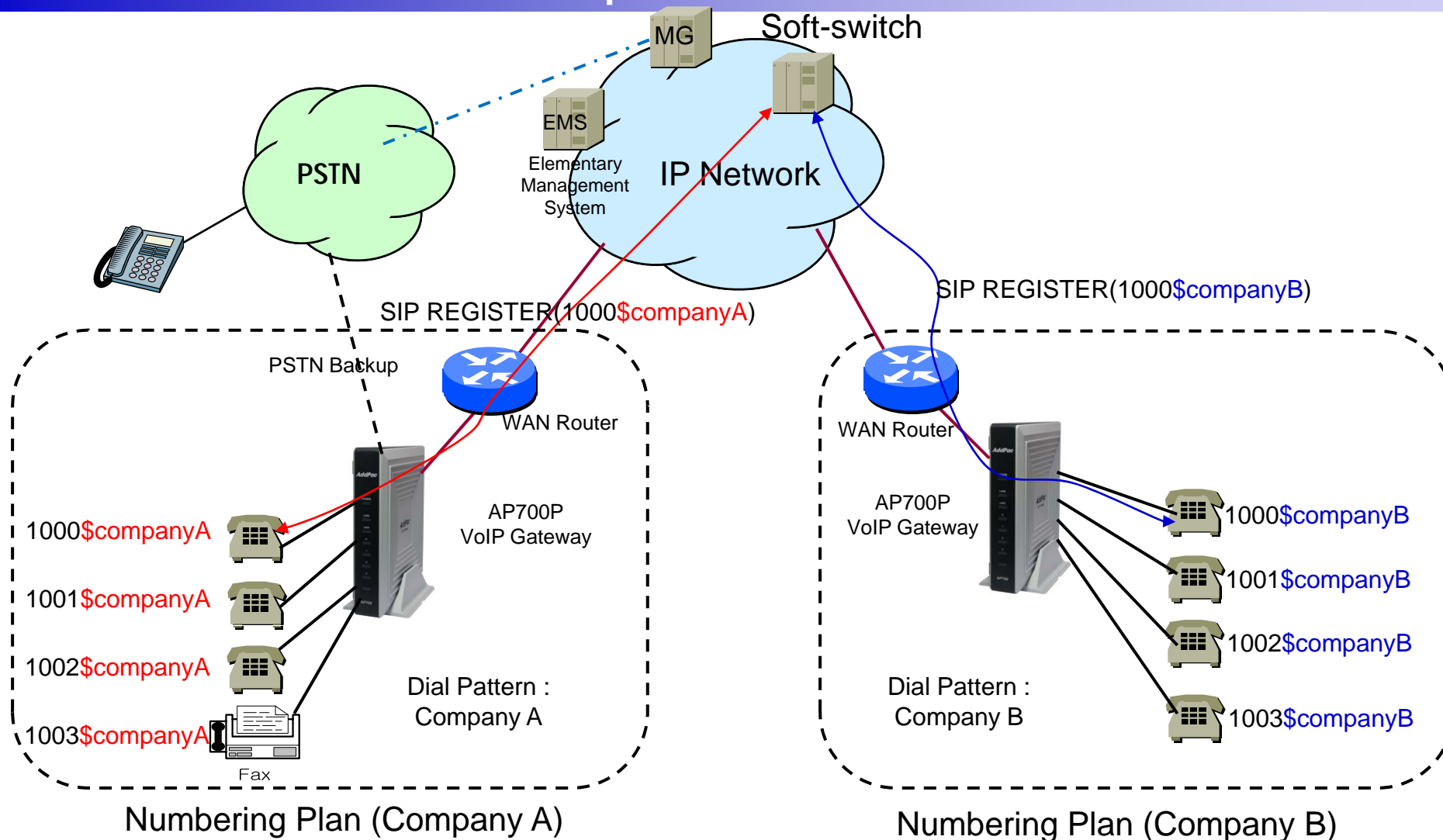
- RISC Microprocessor Computing Power + High End Programmable DSP
- VoIP FXS Port
  - 4-Port FXS Interface with PSTN Backup(AP700P)
- Network Interface
  - Two(2) 10/100Mbps Fast Ethernet
- Power Supply
  - External Power Adaptor(5V, 3A)
  - Power ON/OFF Switch
- Status LEDs
  - Power LED, LAN0/LAN1 LED, FXS Act LED



# Network Service Diagram (unable to register) : because of same numbering plan



# Network Service Diagram(able to register) : SIP extended dial pattern



# [SIP] Support extended dial-pattern

Smart Web Manager  
www.addpac.com

**System**

- Language
- WAN Setup
- LAN Setup
- NAT
- NTP
- System Time
- File Browser

**Basic**

- Protocol
- Server SIP
- Server H.323
- SIP Registration**
- H.323 Registration
- E1/T1 Trunk
- FXS Extension
- FXO/EnM Extension
- E1/T1 Extension
- DTMF/CODEC
- VoIP Dial Plan
- FXO DialPlan
- Static Route
- Hot Line

## SIP Registration

SIP Registration Configuration

Pots Num	Port	E.164 Number	User Name	Password	DisplayName	HuntStop	Reg
1000	S0P0	1000\$addpacLAB	ohs	*****		<input checked="" type="checkbox"/>	<input checked="" type="checkbox"/>
1001	S0P1					<input type="checkbox"/>	<input type="checkbox"/>
1002	S0P2					<input type="checkbox"/>	<input type="checkbox"/>
1003	S0P3					<input type="checkbox"/>	<input type="checkbox"/>

\* SIP Registration - Assigned Pots Tag Number: 1000 - 1024

Apply

Extended Dial-Pattern

- 'SIP Registration Number' + \$ + 'Site Information' (ex) 1000\$addpacLAB
- CLI :  

```
dial-peer voice 1000 pots  
destination-pattern 1000 $ addpacLAB
```
- Interworking with MERA Softswitch (Aloe Systems)

# REGISTER Message

## REGISTER

```
REGISTER sip:172.16.1.1 SIP/2.0
Via: SIP/2.0/UDP 172.16.9.8:5060;branch=z9hG4bK334f4700a417
From: <sip:1000$addpacLAB @172.16.1.1>;tag=334f4700a4
To: sip:1000$addpacLAB @172.16.1.1
Call-ID: 33cf8b4f-68d8-4757-8000-0002a4000000@172.16.9.8
CSeq: 17 REGISTER
Date: Mon, 16 Apr 2012 08:03:29 GMT
User-Agent: AddPac AP1800 8.41.027
Contact: <sip:1000$addpacLAB @172.16.9.8>;expires=60
Expires: 60
Content-Length: 0
Max-Forwards: 70
```

- Configured dial-pattern is reflected to From, To and Contact field.

# Inbound Call From MERA Soft-switch

## INVITE

```
INVITE sip: 1000$addpacLAB @172.16.9.8 SIP/2.0
Via: SIP/2.0/UDP 172.16.1.68:5060;branch=z9hG4bK714f7803a44
From: <sip:1000@172.16.1.68>;tag=714f7803a5
To: <sip: 1000$addpacLAB @172.16.9.8>
Call-ID: 71be874f-834a-784f-8003-0002a4000000@172.16.1.68
CSeq: 1 INVITE
Supported: replaces, timer, 100rel, early-session
Min-SE: 1800
Date: Fri, 13 Apr 2012 05:49:37 GMT
Session-Expires: 1800
User-Agent: AddPac AP1800 8.41.027
Contact: <sip:1000@172.16.1.68>
Accept: application/sdp
Allow: INVITE, ACK, CANCEL, OPTIONS, BYE, UPDATE, PRACK, REFER, NOTIFY, INFO
Content-Type: application/sdp
Content-Length: 202
Max-Forwards: 72

v=0
o= 1000$addpacLAB 1334296177 1334296177 IN IP4 172.16.1.68
s=AddPac Gateway SDP
c=IN IP4 172.16.1.68
t=1334296177 0
m=audio 23002 RTP/AVP 18
a=ptime:20
a=rtpmap:18 G729/8000
a=fmtp:18 annexb=no
```

- The INVITE message with extended dial-pattern is processed without problem.





# Thank you!

**AddPac Technology Co., Ltd.**  
Sales and Marketing

Phone +82.2.568.3848 (KOREA)

FAX +82.2.568.3847 (KOREA)

E-mail [sales@addpac.com](mailto:sales@addpac.com)