

# AP-MC1500

## Audio MCU (Multipoint Control Unit)

High-performance Audio MCU Solution



# **AddPac**

**AddPac Technology**

Sales and Marketing

[www.addpac.com](http://www.addpac.com)

# Contents

AP-MC1500 Audio MCU

- Product Overview
- Hardware Specification
- Software Service
- Audio Service and Features
- Network Service and Features
- Conference Service and Features
- Application Area
- Ordering Information

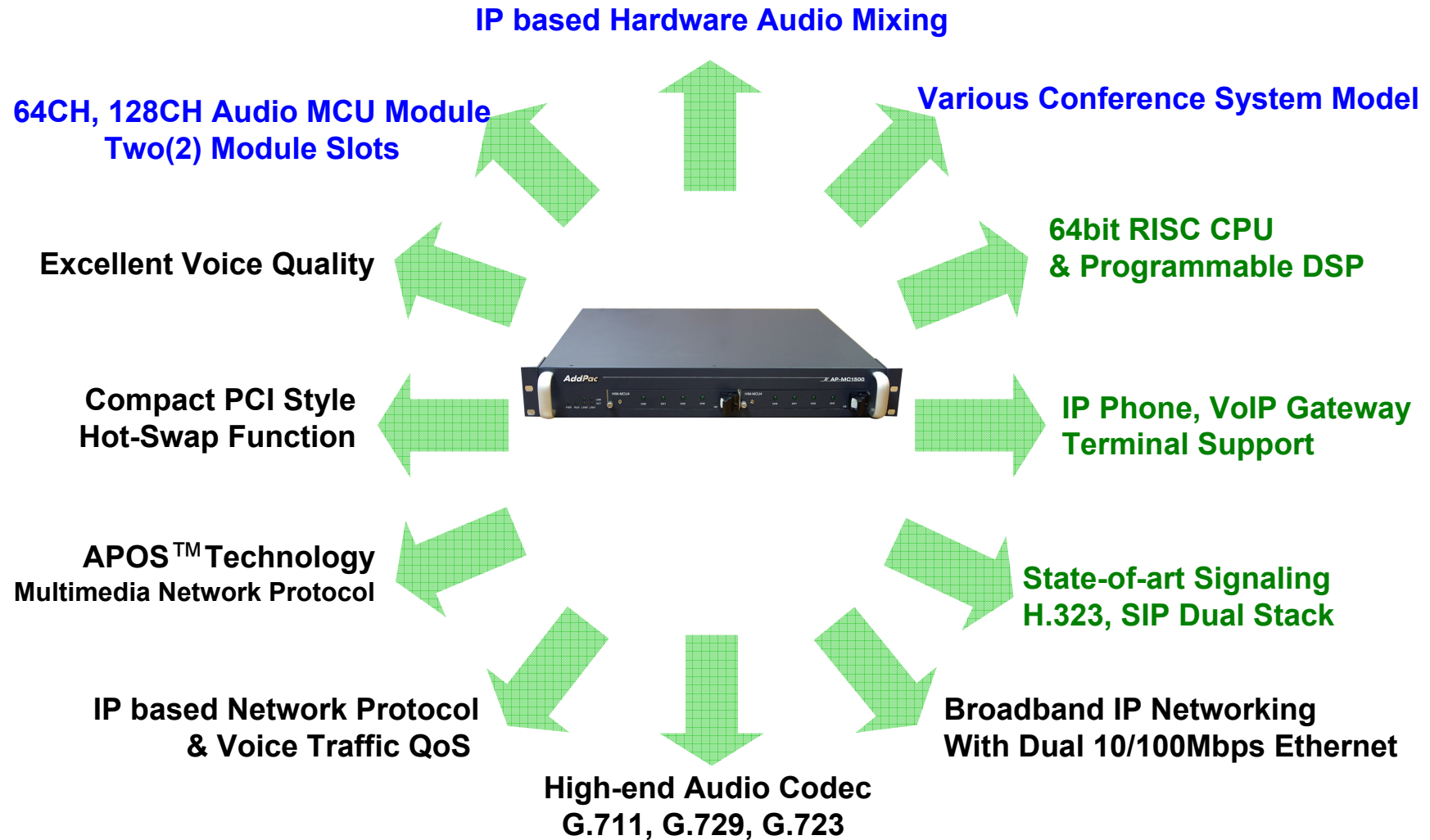
# Product Overview

AP-MC1500 Audio MCU

- IP based Hardware Audio Mixing Solution
- Support Various Conference System Model
- Scalability and Flexibility
- High-performance Audio Mixing Service
- SIP and H.323 VoIP Signaling Support
- Firmware Upgradeable Architecture
- Audio Solution with Outstanding Network Service Capability

# Product Highlights

AP-MC1500 Audio MCU



**AddPac**

[www.addpac.com](http://www.addpac.com)

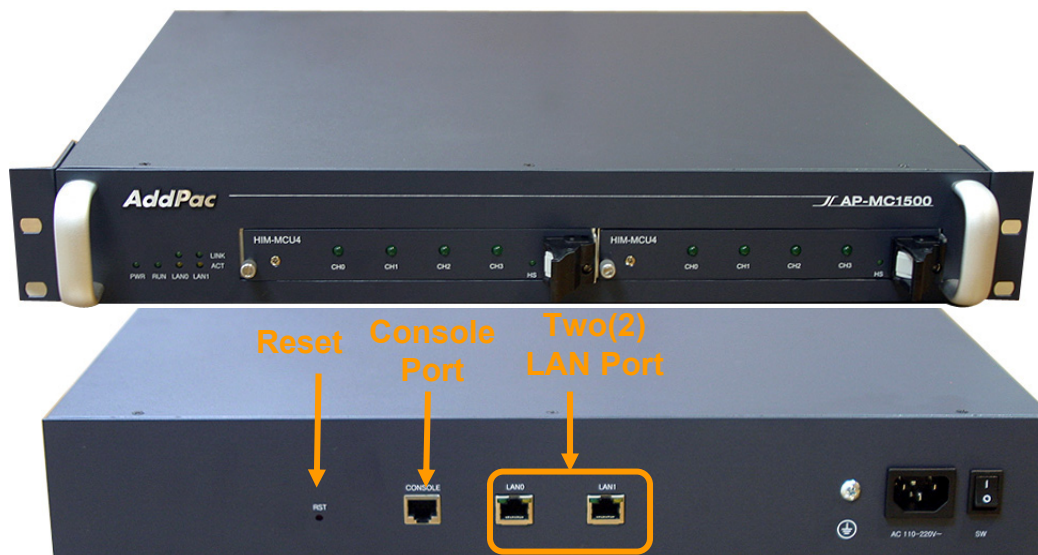
# Hardware Specification

AP-MC1500 Audio MCU

PowerPC  
CPU

High-end  
DSP

- **High Performance RISC Microprocessor Computing Power**
- **Built-in High-end Programmable DSP Hardware Architecture**
- **Main Chassis**
  - **Network Interface**
    - Two(2) 10/100Mbps Fast Ethernet
    - One(1) RS-232C Console (RJ45)



**AddPac**

[www.addpac.com](http://www.addpac.com)

# Hardware Specification

AP-MC1500 Audio MCU

PowerPC  
CPU

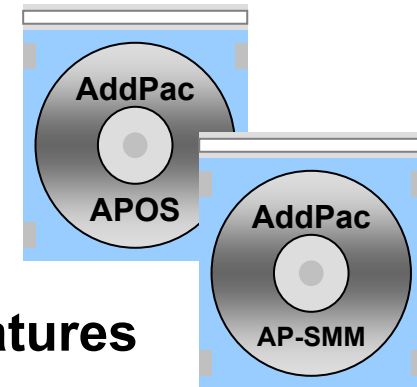
High-end  
DSP

- **MCU Module (HIM-AMCU128)**
  - High quality Audio Mixing
  - 128Channel Audio Mixing
  - Compact PCI Style Hot-Swap Function
  - High-End Programmable DSPs
  - Parallel DSP Processing for High Quality Audio Mixing
  - Concurrent Different Audio Codec Support
  
- **MCU Module (HIM-AMCU64)**
  - High quality Audio Mixing
  - 64 Channel Audio Mixing
  - Compact PCI Style Hot-Swap Function
  - High-End Programmable DSPs
  - Parallel DSP Processing for High Quality Audio Mixing
  - Concurrent Different Audio Codec Support
  - Cascade Support

# Software Service

AP-MC1500 Audio MCU

- **Built-in AddPac APOS Internetworking Software**
  - Scalability, Functionality, and Stability Features
  - Video Traffic QoS Control
- **Programmable Video, Audio, and Voice Services**
  - Video Codes, Audio, and Voice Codec
- **Firmware Upgradeable DSP Architecture**
- **Industry Standard IP based Network Protocol Features**
- **AP-SMM (Smart Multimedia Management Software) Solution**
  - Server and Client Architecture
  - Intel Pentium Machine with MS Window Server OS and MS-SQL



# Audio & Voice Service and Features

AP-MC1500 Audio MCU

- **VoIP based Signaling Protocol Support**
  - H.323, SIP Multiple Signaling Protocol Stack
  - H.323 Gateway, Gatekeeper Support
- **High-performance Audio & Voice Codec Support**
  - G.726, G.711, G.729, G.723 Audio Codec
- **Enhanced QoS Management Features for Voice Traffics**



# Network Service and Features (cont..)

AP-MC1500 Audio MCU

- **Network Managements**
  - Standard SNMP Agent (MIB v2) Support
  - Remote Management using Console, Telnet
  - Web based Management using HTTP Server Interface
- **Security Functions**
  - Standard & Extended IP Access List
  - Enable/Disable for Specific Network Protocols
  - Multi-level User Account Management
  - Auto-disconnect for Telnet/Console Sessions
  - PPP User Authentication Supports (PAP & CHAP)
- **Operation & Managements**
  - System Performance Analysis for Process, CPU, Connection Interface
  - Debugging, System Auditing, and Diagnostics Support
  - System Booting and Auto-rebooting with Watchdog Feature
  - System Managements with Data Logging
  - IP Traffic Statistics with Accounting

# Network Service and Features

AP-MC1500 Audio MCU

- **Network Managements**
  - DHCP Server & Relay Functions
  - Network Address Translation (NAT) Function
  - Port Address Translation (PAT) Function
  - Transparent Bridging (IEEE Standard) Function
    - Spanning Tree Bridging Protocol Support
    - Remote Bridging Support
    - Concurrent Routing and Bridging Support
  - Cisco Style Command Line Interface (CLI)
  - Network time Protocol (NTP) Support

# Conference Service and Features (cont..)

AP-MC1500 Audio MCU

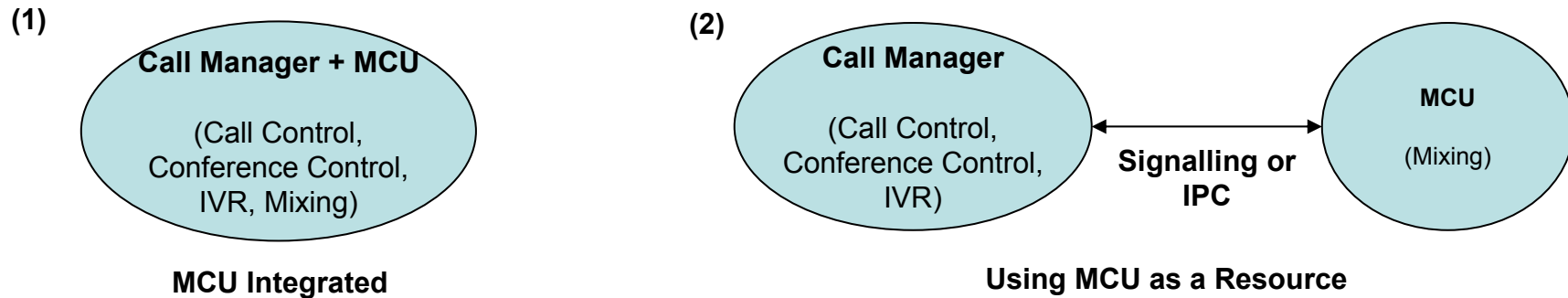
- Type of Conference
  - Meet-Me (Dial-In) Conference
    - Require that a *range of directory numbers* be allocated for exclusive use of the conference
  - Ad Hoc (On-Demand) Conference
    - using Conference and Join soft key
  - Scheduled Conference
    - Through compatible third-party scheduling applications

# Conference Service and Features (cont..)

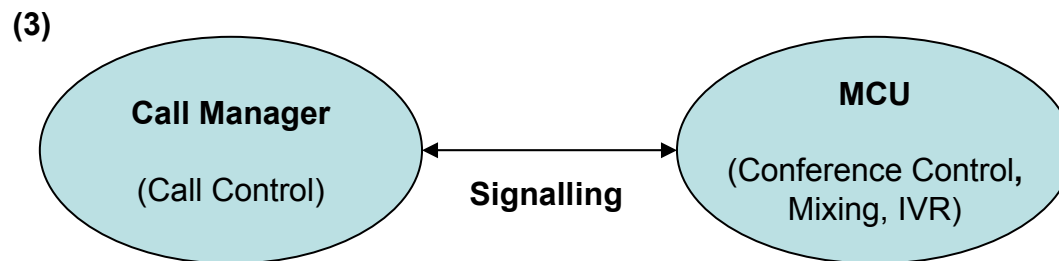
AP-MC1500 Audio MCU

## Conference System Model

### Call Manager controlled conference

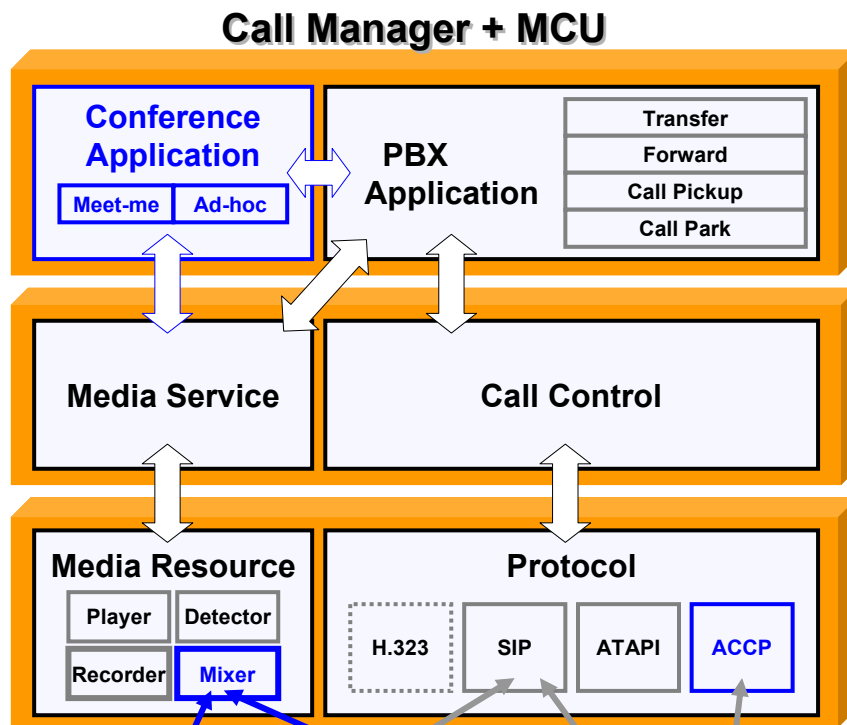


### Interoperate with Stand-alone MCU



# Conference Service and Features (cont..)

AP-MC1500 Audio MCU



## MCU Integrated Model

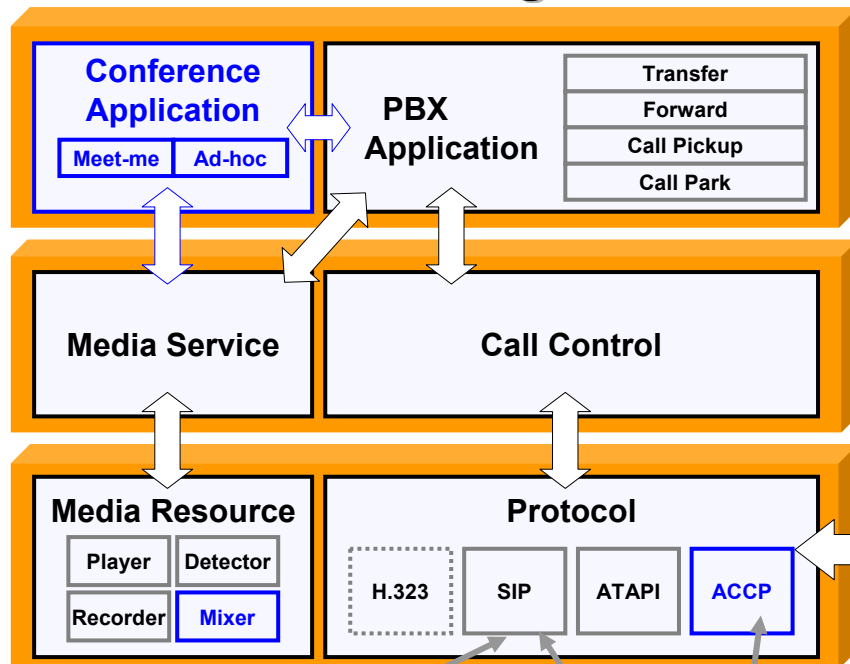
\* ATAPI - AddPac Telephony API  
 \* ACCP - AddPac Client Control Protocol



# Conference Service and Features (cont..)

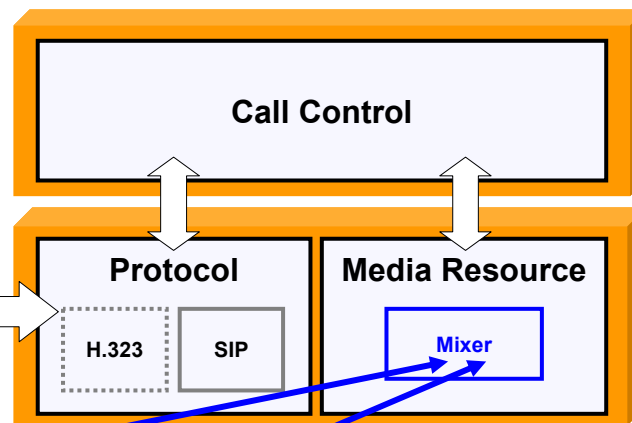
AP-MC1500 Audio MCU

## Call Manager



## Using MCU as a Resource

### MCU



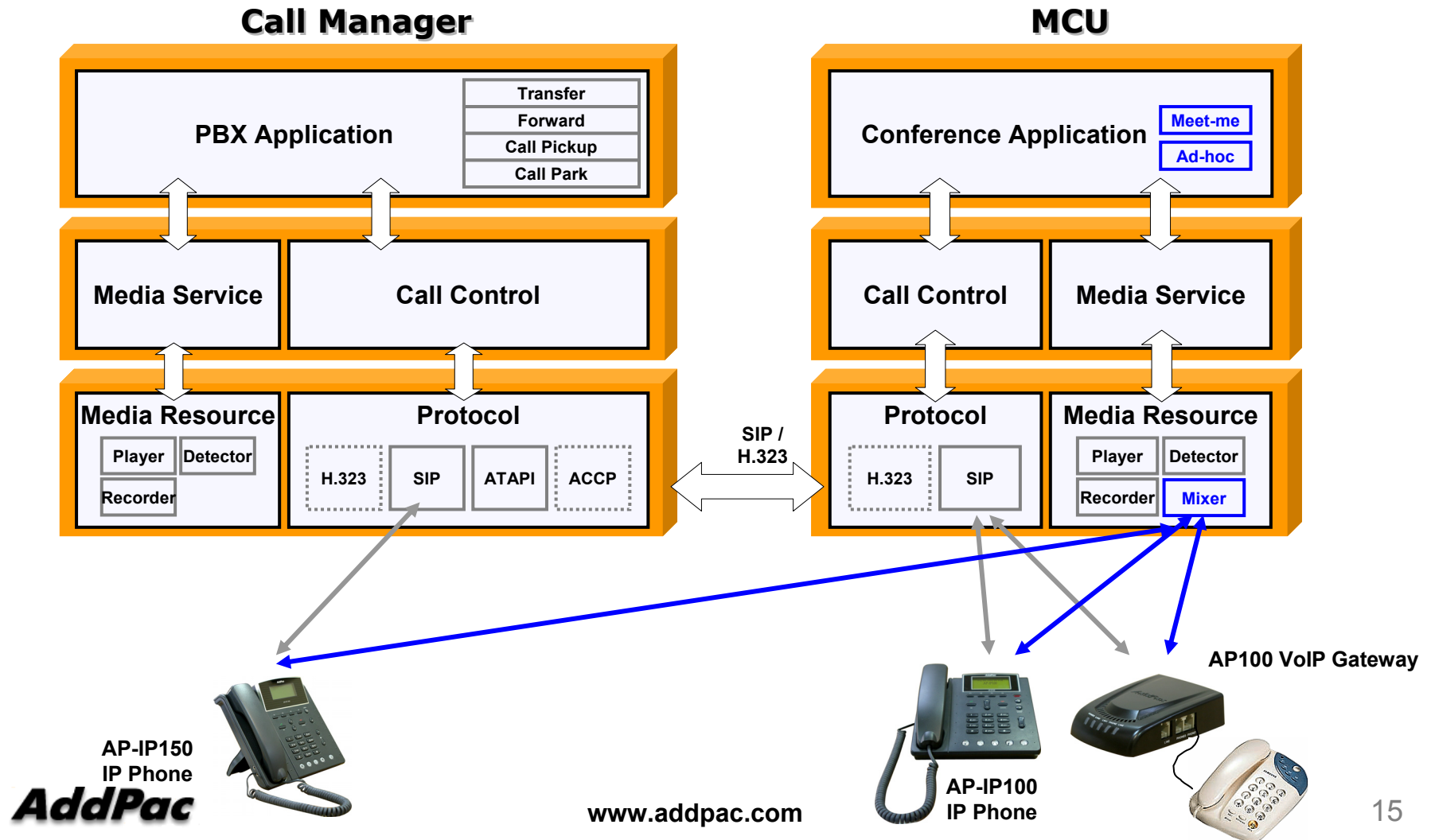
**AddPac**

[www.addpac.com](http://www.addpac.com)

# Conference Service and Features

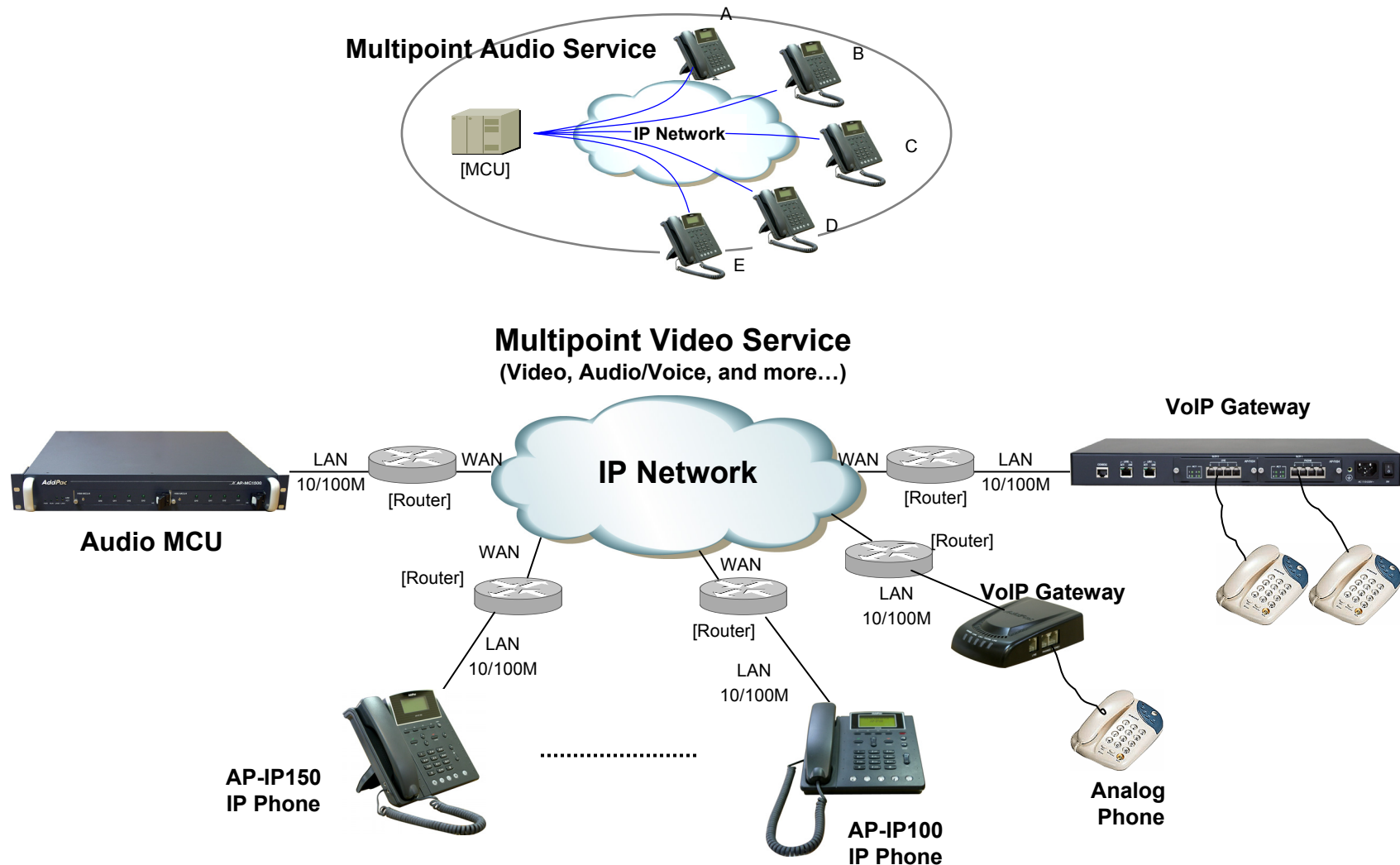
AP-MC1500 Audio MCU

## Stand-alone MCU Model



# AP-MC1500 Audio MCU

## Network Diagram for Audio Conference





# Ordering Information

- **AP-MC1500 Audio MCU Hardware**
  - AP-MC1500 Audio MCU Main Body
  - High-performance RISC CPU with Programmable DSP Architecture
  - 2-port 10/100Mbps Fast Ethernet and 1-port RS-232C Console(RJ45)
  - Two(2) Module Slot for Video MCU Modules
  - Smart Multimedia Management Software
  - Including Network Cable Set
  - Optional Audio MCU Modules (HIM-AMCU128, HIM-AMCU64)
- **Built-in APOS Internetworking Software for AP-MC1500**
- **Including 1 Year Hardware Warranty**
- **Product Documents**
  - Install and Operation Guide (PDF)
- **Pricing**
  - AddPac Technology Regional Sales Manager
  - Authorized Sales and Marketing Representatives
  - Please Contact [www.addpac.com](http://www.addpac.com)

# AP-MC1500 Audio MCU

**Thank you!**

**AddPac Technology Co., Ltd.**  
Sales and Marketing

Phone +82.2.568.3848 (KOREA)

FAX +82.2.568.3847 (KOREA)

E-mail [sales@addpac.com](mailto:sales@addpac.com)