



AP-NR1000

Network DVR Server

High-performance Network DVR Server Solution



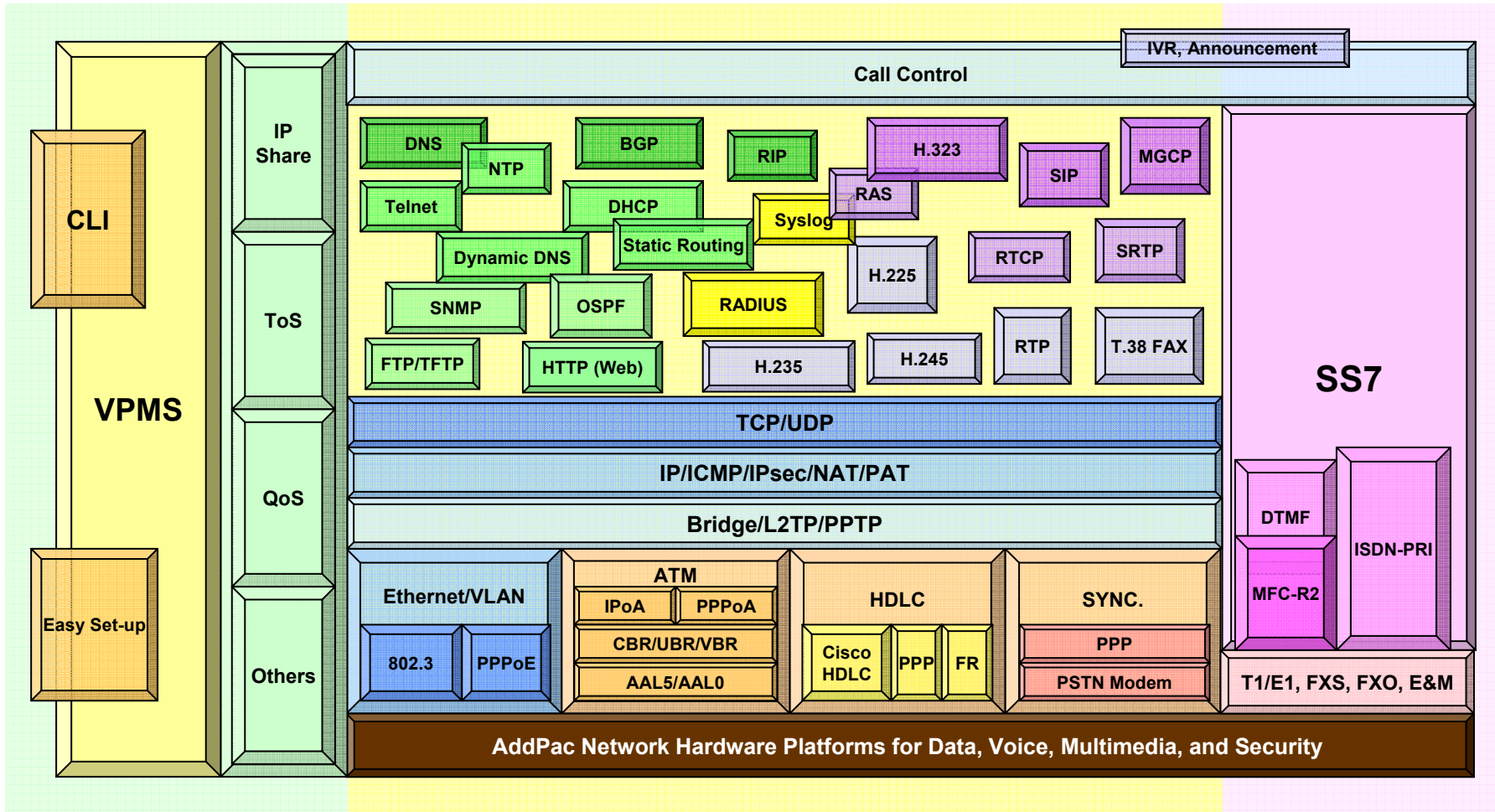
AddPac

AddPac Technology

Sales and Marketing

www.addpac.com

APOS Internetworking Protocol



AP-NR1000 Network DVR Server

- Product Overview
- Product Highlight
- Hardware Specification
- Software Service
- Network Service and Features
- Network DVR Components
- Application Service
- Ordering Information

Product Overview

AP-NR1000 Network DVR Server

- IP based Network DVR Server & Manager Server
- Powerful Management and User Friendly Features
- Fault Tolerant and Scalability Architecture
- High-performance Audio and Video Service
- Firmware Upgradeable Architecture
- Two(2) Gigabit Ethernet Interface
- **RAID 1** Hard Disk Backup



Product Highlights

AP-NR1000 Network DVR Server

Next Generation IP based
Network DVR Server

Embedded System for Stability

Fault Tolerant and
Scaleable Architecture

RAID 1 Hard Disk Backup
(3.5 Inch IDE Hard Disk)

Four(4) Hard Disk Slots
(Hot-Swap Support)

Firmware Upgradeable
Architecture

Smart DVR Viewer

APOS™ Technology
Multimedia Network Protocol

USB Host Mode Interface
for Secondary Backup (DVD
Writer), etc

High Performance Audio/Video
Recording & Streaming Solution

Two(2) 10/100/1000Mbps
Gigabit Ethernet

Smart DVR Manager for
AP-NR1000 Management

AddPac

www.addpac.com

Hardware Specification

AP-NR1000 Network DVR Server

64bit
CPU

- **RISC Microprocessor Computing Power**
- **Main Chassis**
 - **Network Interface**
 - Two(2) 10/100/1000Mbps Gigabit Ethernet
 - One(1) RS-232C Console (RJ45)
 - **USB Host Mode Interface for DVD Backup, etc**
 - **Two(4) Hard Disk Interface Slot for RAID1 Configuration**



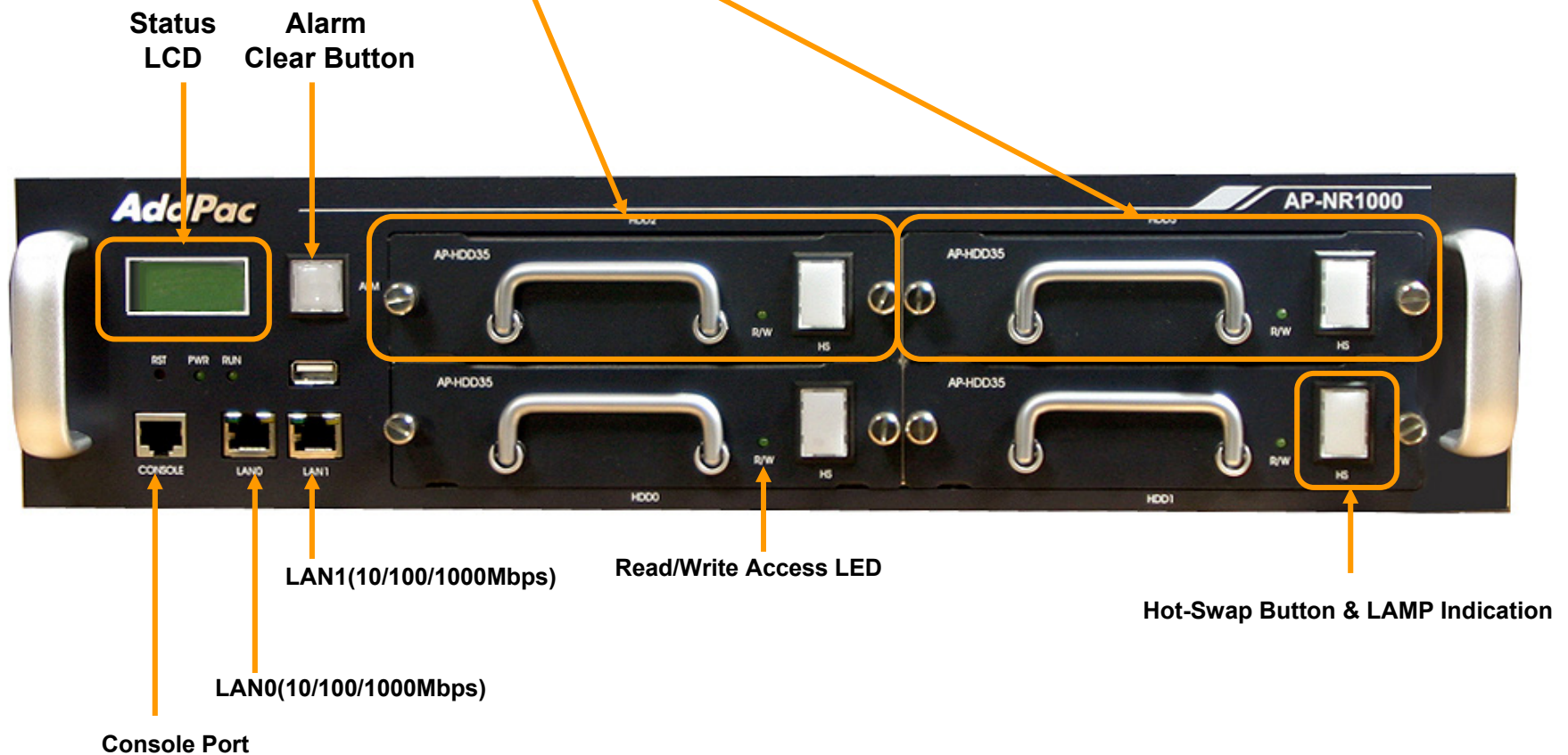
Hardware Specification

AP-NR1000 Network DVR Server

High-End
RISC
CPU

- Hard Disk Module (RAID 1)

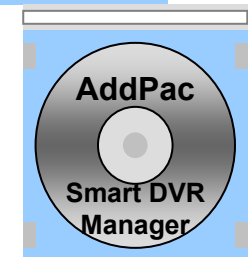
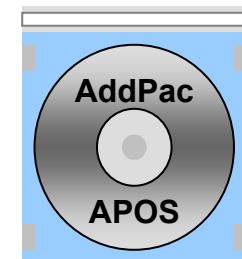
AP-NR1000 Front Side



Software Service

AP-NR1000 Network DVR Server

- **Built-in AddPac APOS Internetworking Software**
 - Scalability, Functionality, and Stability Features
 - Advanced Network DVR Recording & Streaming Features
 - QoS Control Features
- **Firmware Upgradeable Architecture**
- **Industry Standard Network Protocol Features**
- **Highly User Friendly Management Features**
 - PC based Window Program
 - Smart DVR Manager



Network Service and Features

AP-NR1000 Network DVR Server

Basic Network Protocols

- ARP, IPv4, TCP, UDP, ICMP, SCTP, IGMP, MLD

Routing Protocol

- IPv4 : Static

Service Protocol

- FTP, Telnet, TFTP, DHCP Server/Relay, SNMP Server
- CDP (Cisco Discovery Protocol)
- DNS Resolver , DDNS(nsupdate)
- Bridge
- Syslog

IPv4 Address Configuration

- Fixed (Static)
- DHCP
- PPPoE

Miscellaneous

- Standard & Extended IPv4 Access List
- Multi-level User Account Management
- IP accounting



Network DVR Components

AP-NR1000 Network DVR Server

- **Video Server**
 - AP-VS1000 (8CH)
 - AP-VS2000 (16CH)
- **Network Camera**
 - AP-NC700 (1-2CH)
 - AP-NC1000(1-2CH, Module, V.35 Router)
- **Live Displayer**
 - AP-VR1000 (1Slot)
 - AP-VR2000(2Slot)
 - AP-NS1000(4Slot)
- **DVR Streaming Server & DVR Manager Server**
 - AP-NR1000 (300Gx4Ea, Embedded, APOS)
 - AP-NR2000 (300Gx10Ea, Embedded, APOS)
 - AP-NR3000 (Dell Server, Linux)
 - AP-NR4000 (Dell Server, Linux)

Network DVR Components

AP-NR1000 Network DVR Server

- DVR Viewer
 - Smart DVR Viewer (Client, MS-Window)
 - Smart DVR Web Viewer for AP-NC series
 - Smart DVR Web Viewer + PC Storage for AP-NC series



Live Displayer : AP-NS1000

AP-NR1000 Network DVR Server

- Embedded Platform
- Network Camera Stream Real-time Decoding, Display
- RTP/RTSP Support
- RISC Microprocessor Computing Power
- High-end Programmable DSP Hardware Architecture
- Main Chassis
 - Two(2)10/100/1000Mbps Giga Ethernet
 - One(1) RS-232C Console (RJ45)
 - Two(2) HDD Interface Slot
 - Four(4) Video Interface Module Slot
- Video Module
 - AP-4TVD (Four TV Display Interface Module)
 - AP-2TVD (Two TV Display Interface Module)

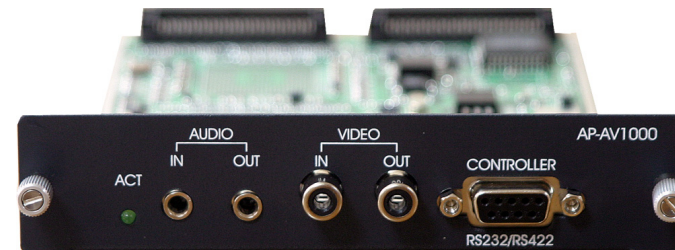


Live Displayer : AP-VR1000

AP-NR1000 Network DVR Server

- **64bit RISC Microprocessor Computing Power**
- **Built-in High-end Programmable DSP Hardware Architecture**
- **Main Chassis**
 - **Network Interface**
 - Two(2) 10/100Mbps Fast Ethernet
 - One(1) RS-232C Console (RJ45)
- **Video Modules**
 - AP-AV1000 (RCA Type Support)
 - AP-AV1000C (Component Support)

AP-AV1000 Video Module



AP-VR1000



Network Camera : AP-NC1000

AP-NR1000 Network DVR Server

- **RISC Microprocessor Computing Power**
- **High-end Programmable DSP Hardware Architecture**
- **Main Chassis : Network Interface**
 - One(1) 10/100Mbps Fast Ethernet
 - One(1) V.35 Interface (optional)
 - One(1) RS-232C Console (RJ45)
- **Video Module (AP-AV2000N)**
 - Powerful Video Interface
 - RCA (or BNC) Video Input
 - High quality Audio and Voice Interface
 - Stereo 3.5mm Audio Input Connector
 - Network Interface
 - One(1) RS-232C/RS422 Interface(DB-9) for Camera Control
- **Video Module (AP-AV2200N)**
 - Powerful Video Interface
 - RCA (or BNC) Video Input/Output
 - High quality Audio and Voice Interface
 - Stereo 3.5mm Audio Input/Output Connector
 - Network Interface
 - One(1) RS-232C/RS422 Interface(DB-9) for Camera Control
 - I/O Interface



Network Camera : AP-NC700

AP-NR1000 Network DVR Server

- **High Performance RISC Microprocessor Computing Power**
- **Built-in High-end Programmable DSP Hardware Architecture**
- **Network Interface**
 - One(1) 10/100Mbps Fast Ethernet
 - One(1) RS-232C Console (RJ45)
- **Powerful Video Interface**
 - RCA (or BNC) Video Input
- **High quality Audio and Voice Interface**
 - Stereo Audio Input/Output Connector
- **Camera Control Interface**
 - One(1) RS-232C/RS422 Interface for External Camera Control
- **I/O Interface**
 - 2 Alarm Input, 1 Relay



Smart DVR Viewer

AP-NR1000 Network DVR Server



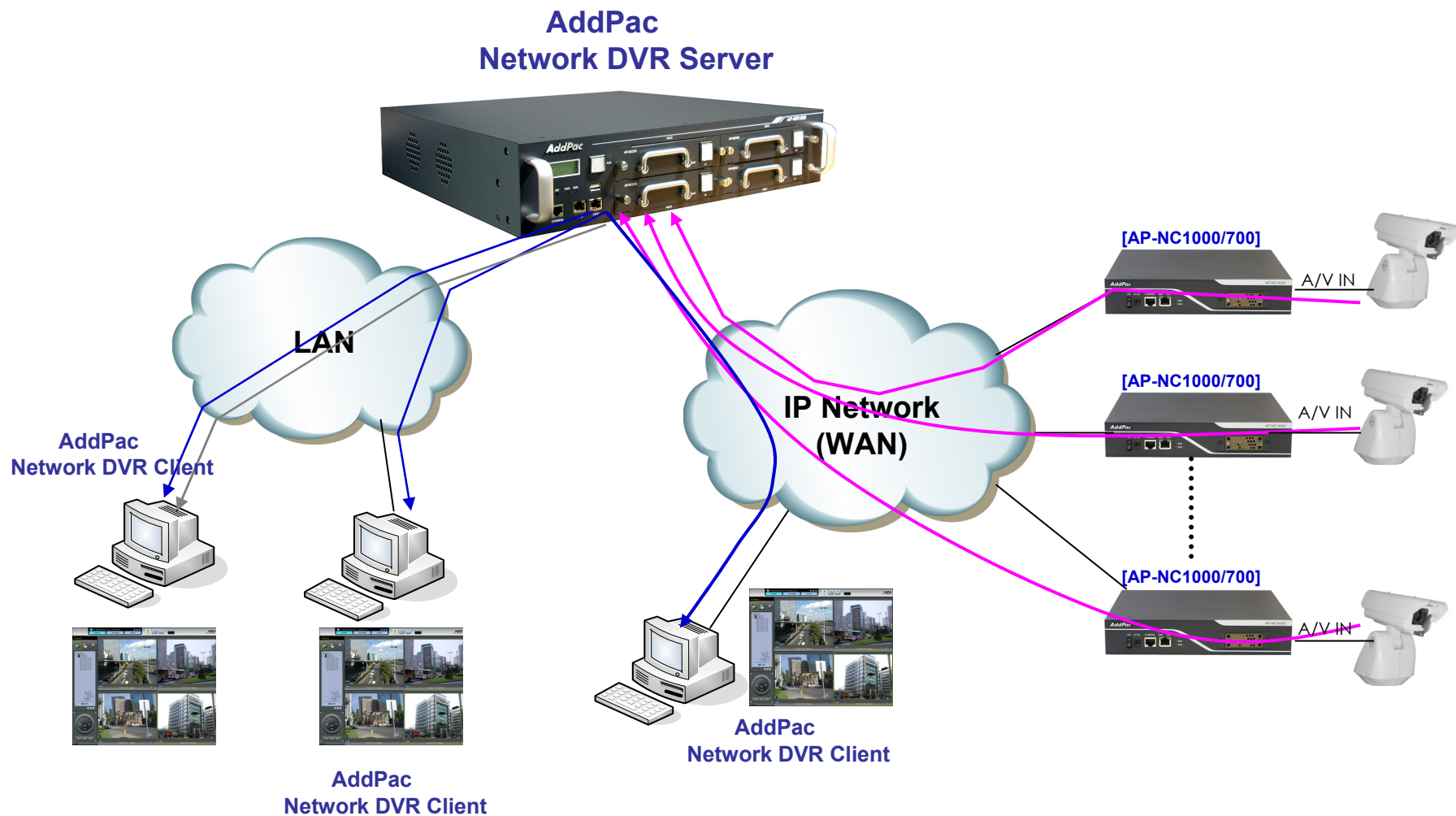
- Multi-Network DVR Server Support
- PAN/TILT/ZOOM Control, Layout & Screen Mode Change
- Error Concealment Support
- Motion Detection & Tracking
- Multi-Live View, Multi-Recording View, Time Synchronization View
- Fast Search (up to 16 time), Jog Shuttle Slow Motion & Rewind
- Intelligent Search using Motion Detection
- Recording ZOOM View
- Audio/Video(MPEG4) Support.

Application Service

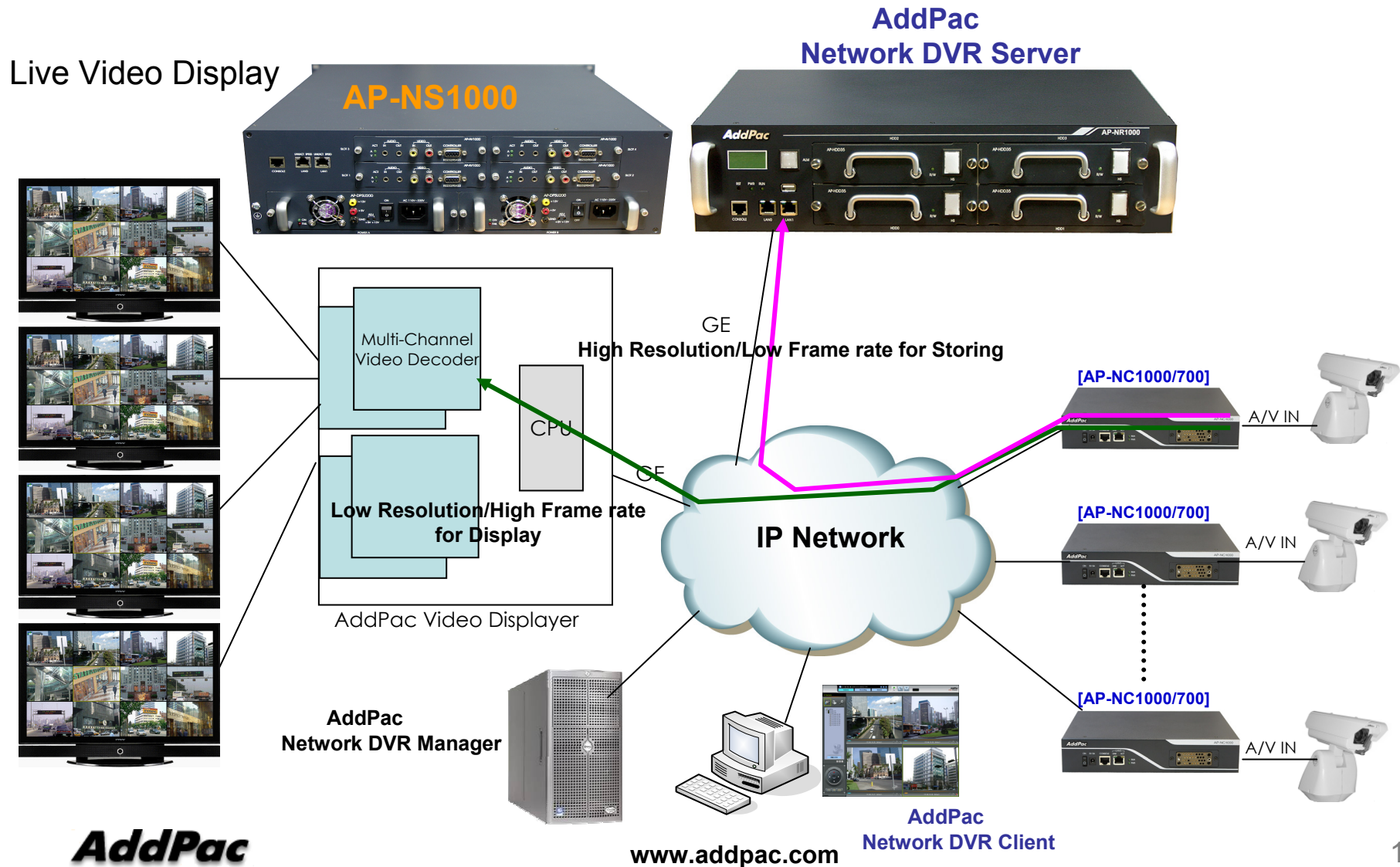
AP-NR1000 Network DVR Server

- **Standard Network DVR Application**
- **Standard Network DVR Application + Multi-Screen TV Live Display**
- **Network DVR + IP Audio Broadcasting Application**

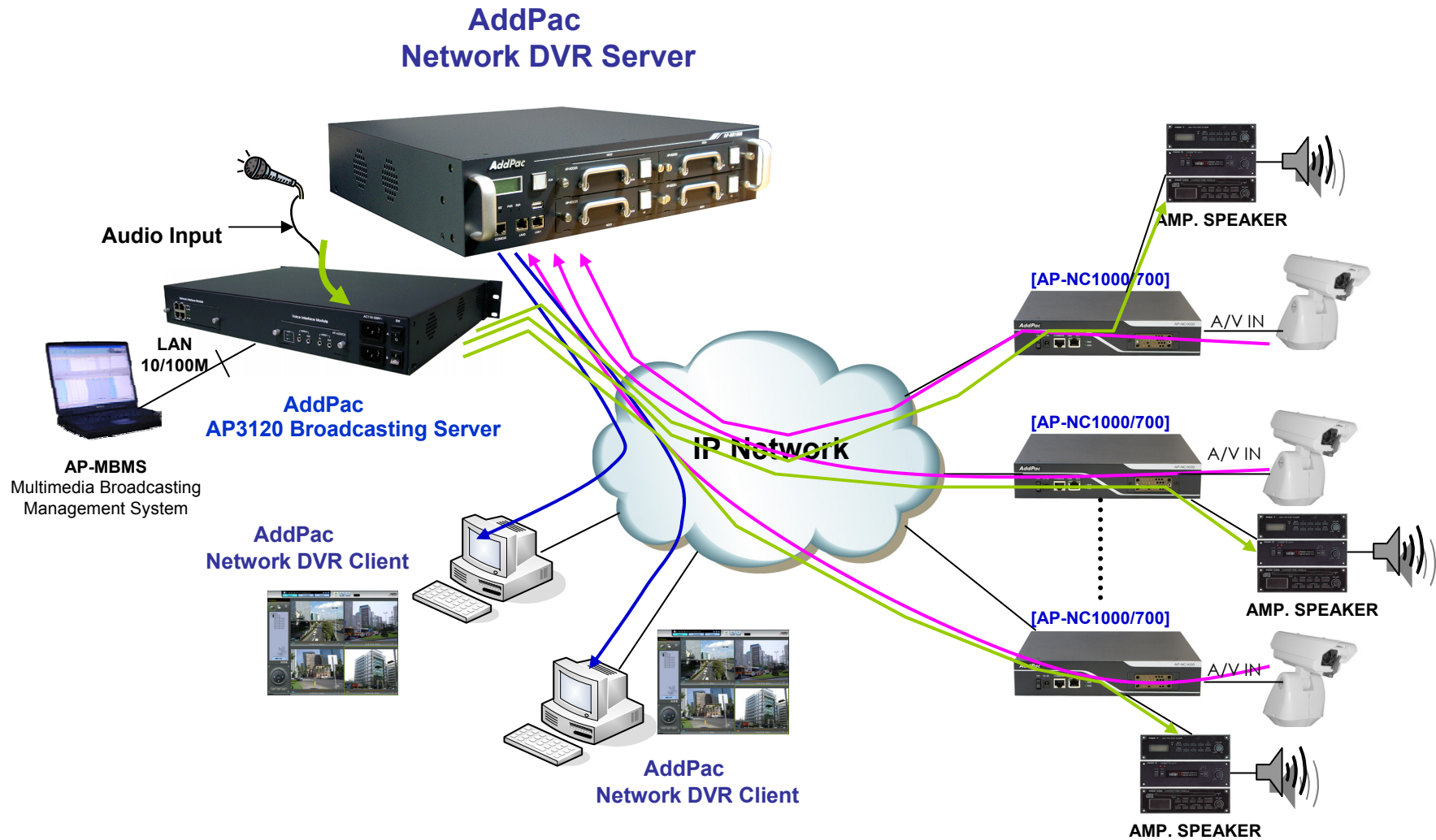
Standard Network DVR App.



Standard Network DVR App. + Live Display



Standard Network DVR App. + IP Audio Broadcasting



Ordering Information

- **Network DVR Server AP-NR1000 Hardware**
 - AP-NR1000 Main Body
 - High-performance 64bit RISC CPU
 - 2-ports 10/100/1000Mbps Ethernet and 1-port RS-232C Console
 - 1-Port USB Interface
 - Including Network Cable Set & Power Supply Cable, etc.
 - RAID 1 Hard Disk (4x3.5 Inch IDE Type HDD, 250G Default)
- **Built-in APOS Internetworking Software for AP-NR1000**
- **Including 1 Year Hardware Warranty**
- **Product Documents**
 - Install and Operation Guide (PDF)
- **Pricing**
 - AddPac Technology Regional Sales Manager
 - Authorized Sales and Marketing Representatives
 - Please Contact www.addpac.com

AP-NR1000™ Network DVR Server

Thank you!

AddPac Technology Co., Ltd.
Sales and Marketing

Phone +82.2.568.3848 (KOREA)

FAX +82.2.568.3847 (KOREA)

E-mail sales@addpac.com