

AP-GTR1000

GPS based Embedded NTP Server

Smart Web Manager



AddPac

AddPac Technology

Sales and Marketing

Contents

- Product Overview
- Hardware Specification
- Smart Web Manager
- SNTP (Simple Network Time Protocol) Server Diagram



Product Overview

AP-GTR1000 IP based GPS Time Receiver Terminal

- High Performance GPS Time Receiver Terminal Solution
- IP based GPS Time Receiver (Location Free, etc)
- NTP (Network Time Protocol) Sever Solution
- Dual RS232 Port for GPS Time Information Transmission
- LCD Display for GPS Time Information
- External Antenna Interface Support
- Various Antenna Support for GPS Signal
- Blue LAMP for Device Status
- Smart Web Manager for System Configuration & Management
- Window, Linux Simple Socket API Program Support
- Firmware Upgradeable Architecture
- Broadcasting Solution with Outstanding Network Service Capability

Hardware Specification

AP-GTR1000 GPS based Embedded NTP Server

RISC
CPU

High-end
GPS

- RISC Microprocessor Computing Power
- High-end GPS Module Hardware Architecture
- One(1) Module Slot for GPS Module
- LCD Display at Front Side
- Blue LAMP
- One(1) 10/100Mbps Fast Ethernet Interface
- Dual(2) DB-9 RS232C Interface
- Internal Power Supply
- Rack Mount Bracket (Option)
- GPS Antenna (Option)
- Option Module : AP-GPS-RS232
 - Two(2) DB-9 RS232C Interface Port
 - GPS Antenna Interface Port

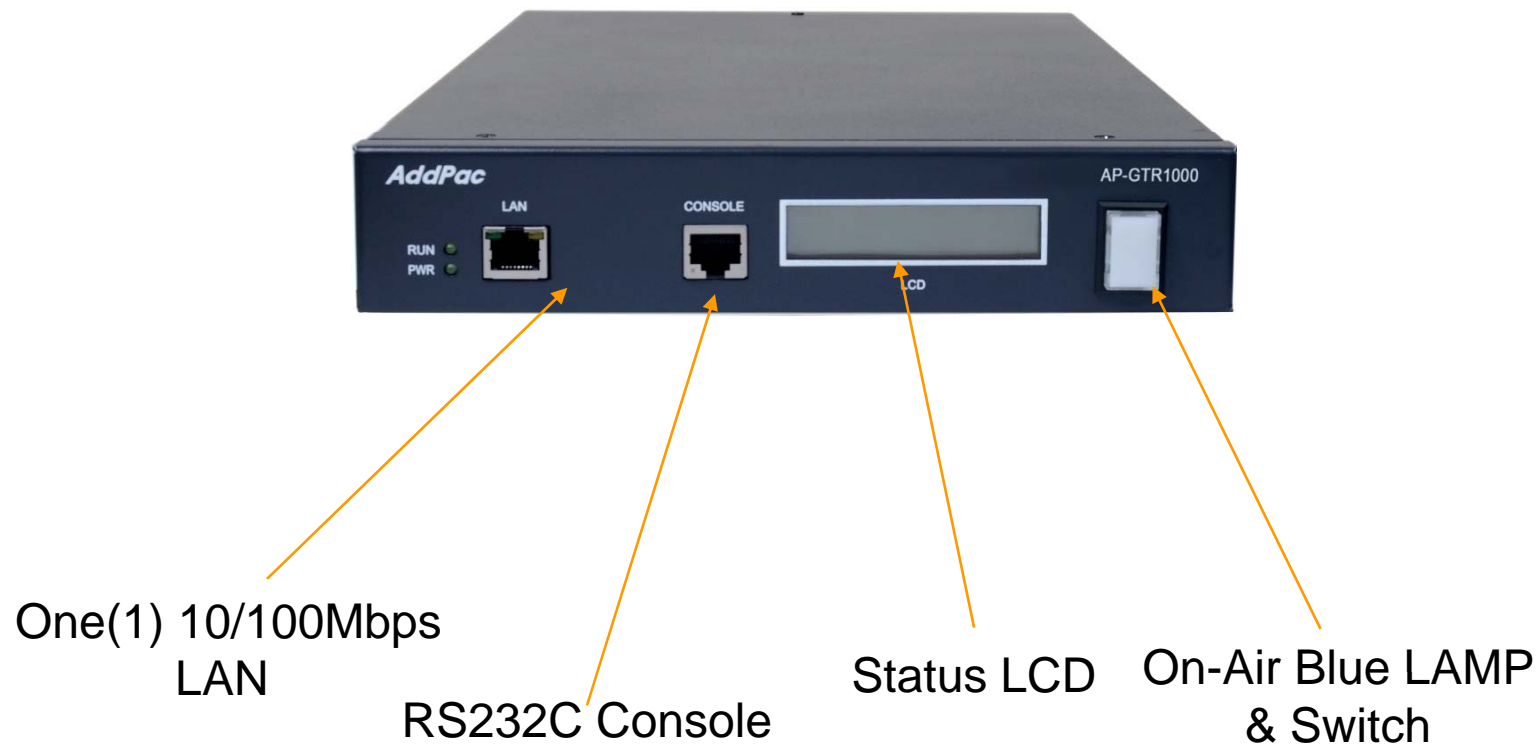
Hardware Specification

AP-GTR1000 GPS based Embedded NTP Server

RISC
CPU

High-end
GPS

Front Side



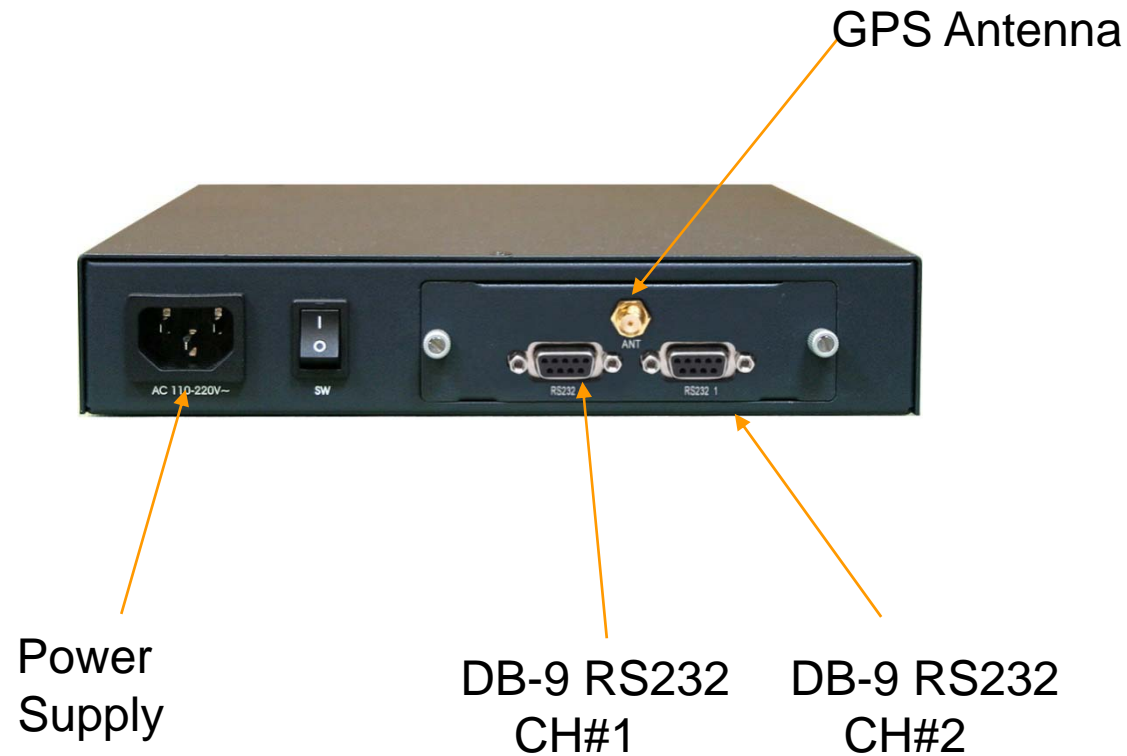
Hardware Specification

AP-GTR1000 GPS based Embedded NTP Server

RISC
CPU

High-end
GPS

Back Side

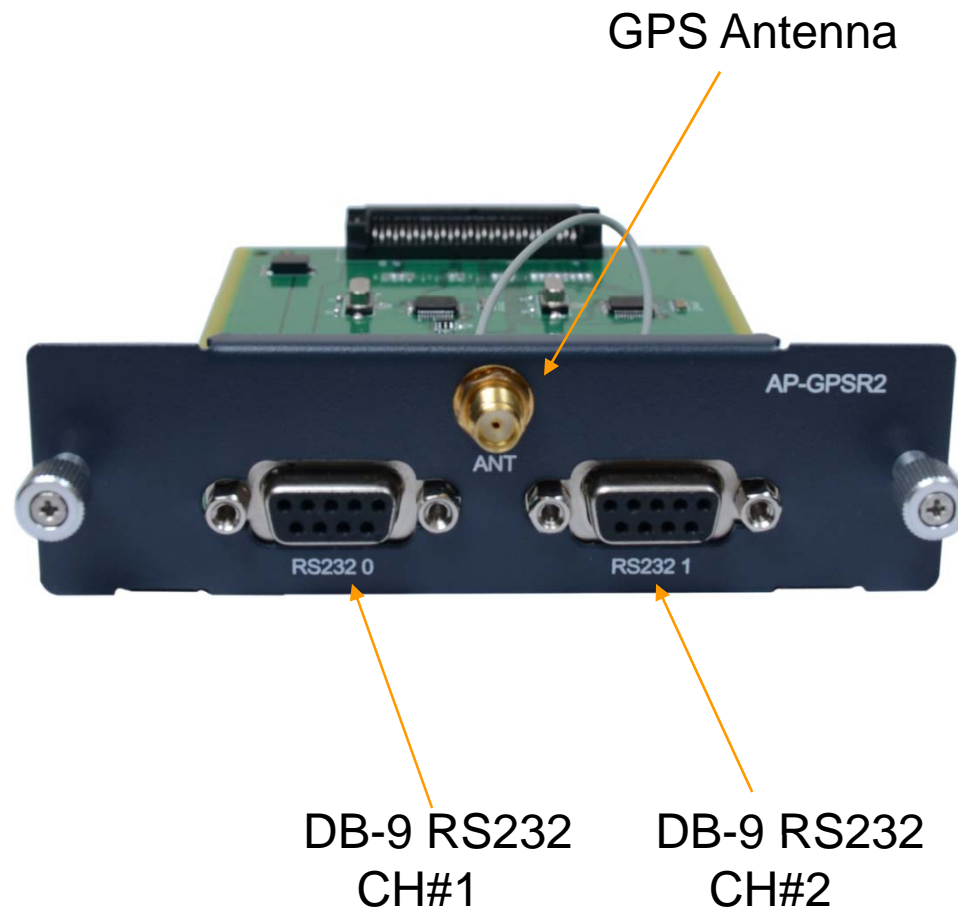


Hardware Specification

AP-GTR1000 GPS based Embedded NTP Server

RISC
CPU

High-end
GPS



Hardware Specification

AP-GTR1000 GPS based Embedded NTP Server

RISC
CPU

High-end
GPS

GPS Antenna





Smart Web Manager

Main View

Smart Web Manager
www.addpac.com

System

- Language
- WAN Setup
- System Time
- File Browser

Advanced

- SNMP

Miscellaneous

- System Log

System Information

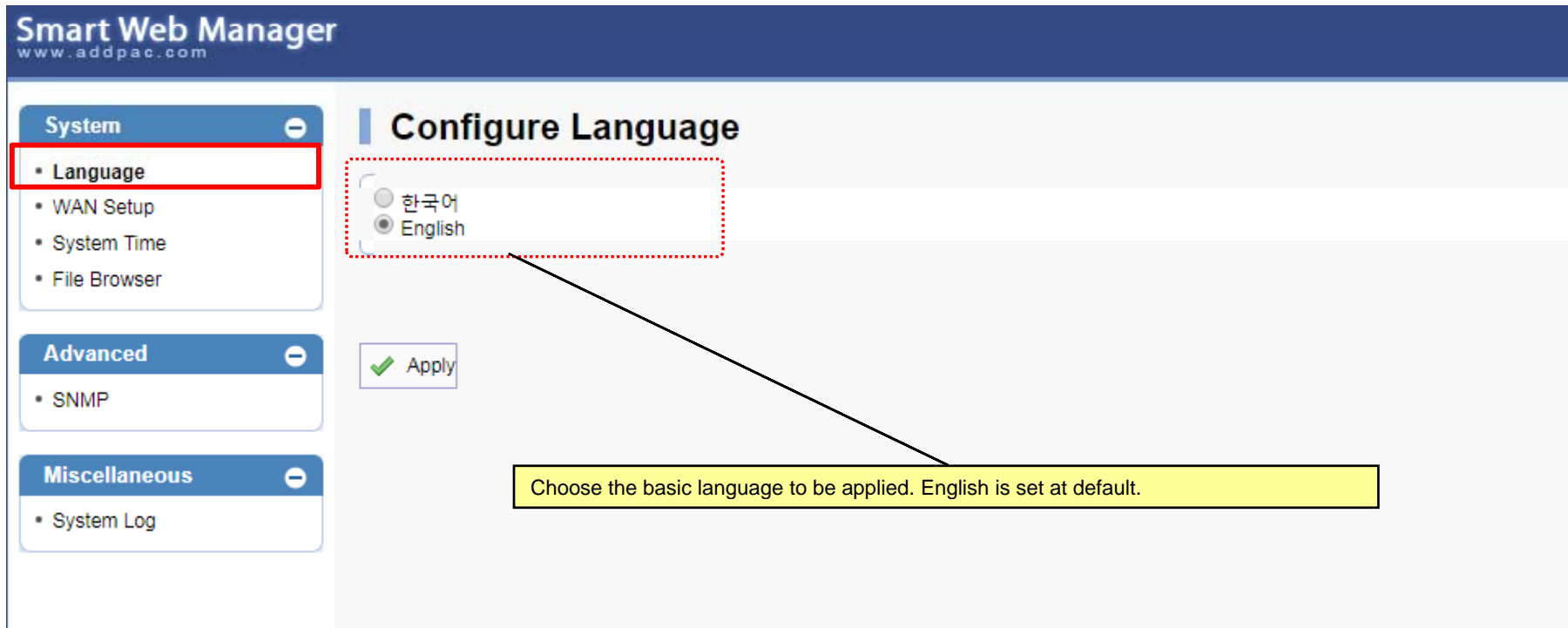
Model	AP-GTR1000_G2
SW Version	8.51.017
Current Time	Tue Oct 10 14:06:38 2017
Network Information	Static 172.16.7.122
WAN LINK Status	100Mbps HALF Duplex Link UP

Show System Information

- Model
- SW version
- Current Time
- Network Information
- WAN Link status

System View

Language



Smart Web Manager
www.addpac.com

System ▾

- **Language**
- WAN Setup
- System Time
- File Browser

Advanced ▾

- SNMP

Miscellaneous ▾

- System Log

Configure Language

한국어

English

Apply

Choose the basic language to be applied. English is set at default.

System View

WAN Setup – WAN Setup(1/2)

- System
 - Language
 - WAN Setup**
 - System Time
 - File Browser
- Advanced
 - SNMP
- Miscellaneous
 - System Log

WAN & Tunneling Setup

WAN Setup

Hostname

Static IP

IP Address A.B.C.D
Network Mask A.B.C.D
Default Router A.B.C.D
DNS Server Primary DNS Server
 Secondary DNS Server

PPPoE(ADSL)

User name
Password
Authentication (No Authentication)
 PAP (PPP Authentication Protocol)
 CHAP(Challenge Handshake Authentication Protocol)

DHCP

VLAN ID

Auto

WAN Link Control

Manual

Speed 100 10
Duplex full half

MAC(Hardware) Address -----

Enable QoS (optional)

QoS Control

Bandwidth : Kbps (default auto, 48-4096)
PPS : pps (default auto, 50-2000)

Apply

This command sets up WAN port. The static IP address is to be assigned from the service provider and you can enter the assigned IP address.
For DHCP and PPPoE, IP address of this device can be changed.
MAC Address change can be used only when necessary.
It is recommended to use the address created by the user not the address of the device

System View

WAN Setup – Tunneling Setup (2/2)

System

- Language
- WAN Setup**
- System Time
- File Browser

Advanced

- SNMP

Miscellaneous

- System Log

Tunneling Setup

None(Disable Tunneling, default)
 PPTP(Point-to-Point Tunneling Protocol)

User name
Password

Mode

Authentication (No Authentication)
 PAP(PPP Authentication Protocol)
 CHAP(Challenge Handshake Authentication Protocol)

Phone Number None (Default)
 Hostname (Use hostname as phone number)
 User Define

Source

Destination A.B.C.D (Tunnel End Point Address)

Service

Voice and Data Use Tunnel Interface (default)
 Voice Use Tunnel Interface, Data Use Ethernet Interface
 Data Use Tunnel Interface, Voice Use Ethernet Interface

Apply

Tunneling Setup

- Mode
- Source
- Destination
- Service

System View

System Time

Smart Web Manager
www.addpac.com

System

- Language
- WAN Setup
- System Time**
- File Browser

Advanced

- SNMP

Miscellaneous

- System Log

System Time

Current Time Tue Oct 10 14:49:18 2017

Time Zone Name: Offset: : (-23~23 hours) : (0~60 minutes)

Set System Time Year Month Day Hour Min Sec

Apply

System Time
-Show current time
-Configure time zone
-Configure system time

System View

File Browser

Smart Web Manager
www.addpac.com

System

- Language
- WAN Setup
- System Time
- File Browser**

Advanced

- SNMP

Miscellaneous

- System Log

File Browser

Index of Root/flash/

	Name	Size	Type	Last Modified
	Parent Directory/		Directory	
	secondary/		Directory	2017-Oct-10 14:50:17
	tmp/		Directory	2016-Jan-01 09:00:00
<input type="checkbox"/>	apos.cfg	0.5K	CFG	2017-Oct-10 14:06:31
<input type="checkbox"/>	booter.cfg	0.2K	CFG	2000-Jan-01 09:00:08
<input type="checkbox"/>	gtr1000_g2_v8_51_017.bin	1.7M	BIN	2017-Sep-29 11:21:20

Delete

파일 선택 선택된 파일 없음 Upload

File Browser

- Directory list
- Change directory
- Upload file
- Download file

Advanced View

SNMP

Smart Web Manager
www.addpac.com

System

- Language
- WAN Setup
- System Time
- File Browser

Advanced

- SNMP**

Miscellaneous

- System Log

SNMP

Use SNMP Yes No

Server Port (default 161, between 1 to 65535)

Community

Name	Read	IP	Control
<input type="text"/>	<input checked="" type="radio"/> Read-Only <input type="radio"/> Read-Write	<input type="text"/>	Delete Add

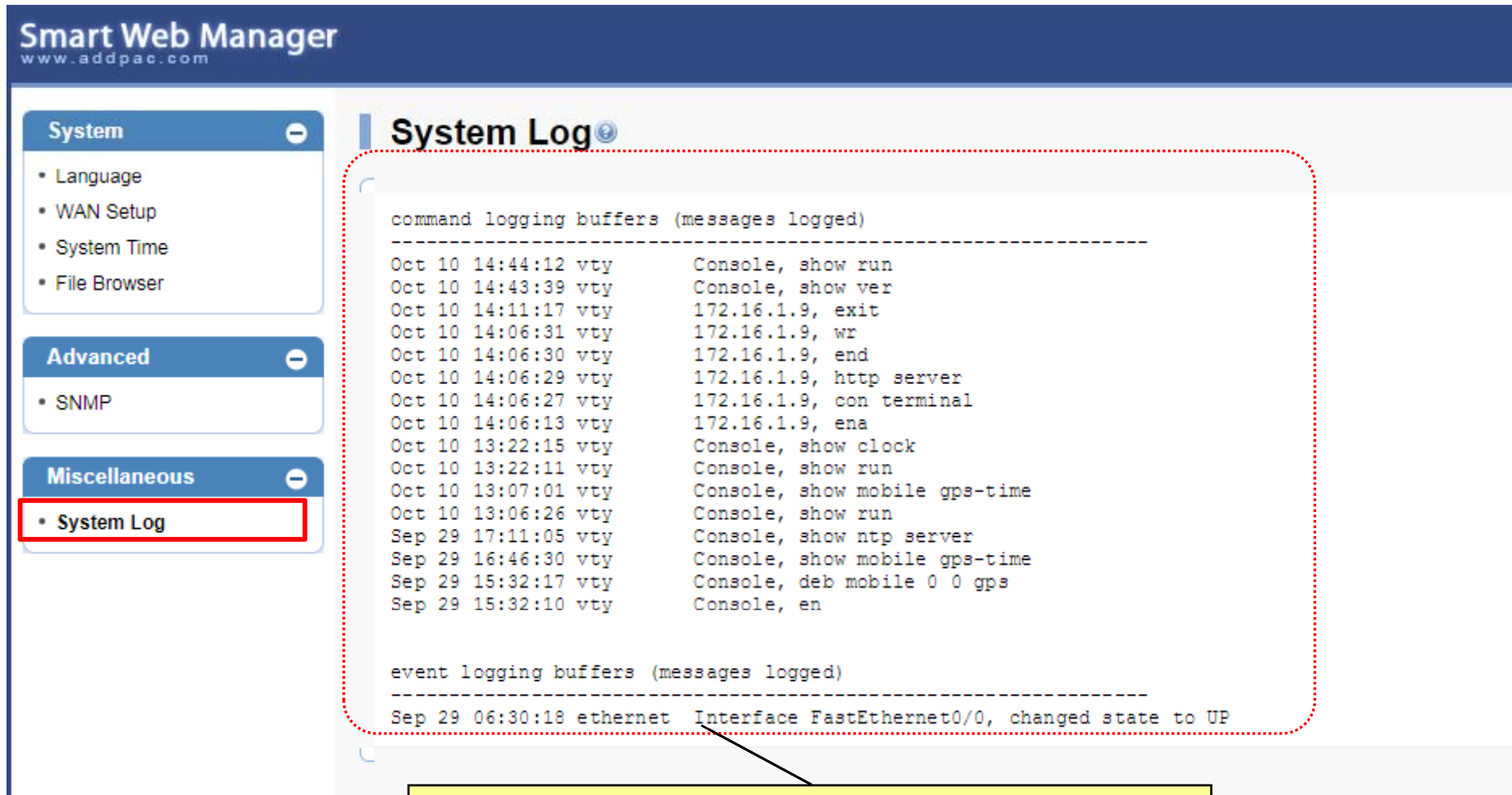
Trap

Name	Version	IP	Port	Control
<input type="text"/>	<input checked="" type="radio"/> v1 <input type="radio"/> v2c	<input type="text"/>	<input type="text"/>	Delete Add

- SNMP
- Enable / Disable
- Service Port
- Community
- Trap server

Miscellaneous View

System Log



The screenshot shows the Smart Web Manager interface. On the left, a sidebar contains three expandable sections: 'System' (with sub-items: Language, WAN Setup, System Time, File Browser), 'Advanced' (with sub-item: SNMP), and 'Miscellaneous' (with sub-item: System Log, which is highlighted with a red box). The main content area is titled 'System Log' and contains two sections of log data, each enclosed in a red dashed border. The first section is 'command logging buffers (messages logged)' and lists various console commands and their timestamps. The second section is 'event logging buffers (messages logged)' and shows a single event: 'Sep 29 06:30:18 ethernet Interface FastEthernet0/0, changed state to UP'. A yellow callout box at the bottom of the screenshot contains the text: 'Retrieve the system log – command and event log'.

Smart Web Manager
www.addpac.com

System

- Language
- WAN Setup
- System Time
- File Browser

Advanced

- SNMP

Miscellaneous

- System Log**

System Log

command logging buffers (messages logged)

```
-----  
Oct 10 14:44:12 vty Console, show run  
Oct 10 14:43:39 vty Console, show ver  
Oct 10 14:11:17 vty 172.16.1.9, exit  
Oct 10 14:06:31 vty 172.16.1.9, wr  
Oct 10 14:06:30 vty 172.16.1.9, end  
Oct 10 14:06:29 vty 172.16.1.9, http server  
Oct 10 14:06:27 vty 172.16.1.9, con terminal  
Oct 10 14:06:13 vty 172.16.1.9, ena  
Oct 10 13:22:15 vty Console, show clock  
Oct 10 13:22:11 vty Console, show run  
Oct 10 13:07:01 vty Console, show mobile gps-time  
Oct 10 13:06:26 vty Console, show run  
Sep 29 17:11:05 vty Console, show ntp server  
Sep 29 16:46:30 vty Console, show mobile gps-time  
Sep 29 15:32:17 vty Console, deb mobile 0 0 gps  
Sep 29 15:32:10 vty Console, en
```

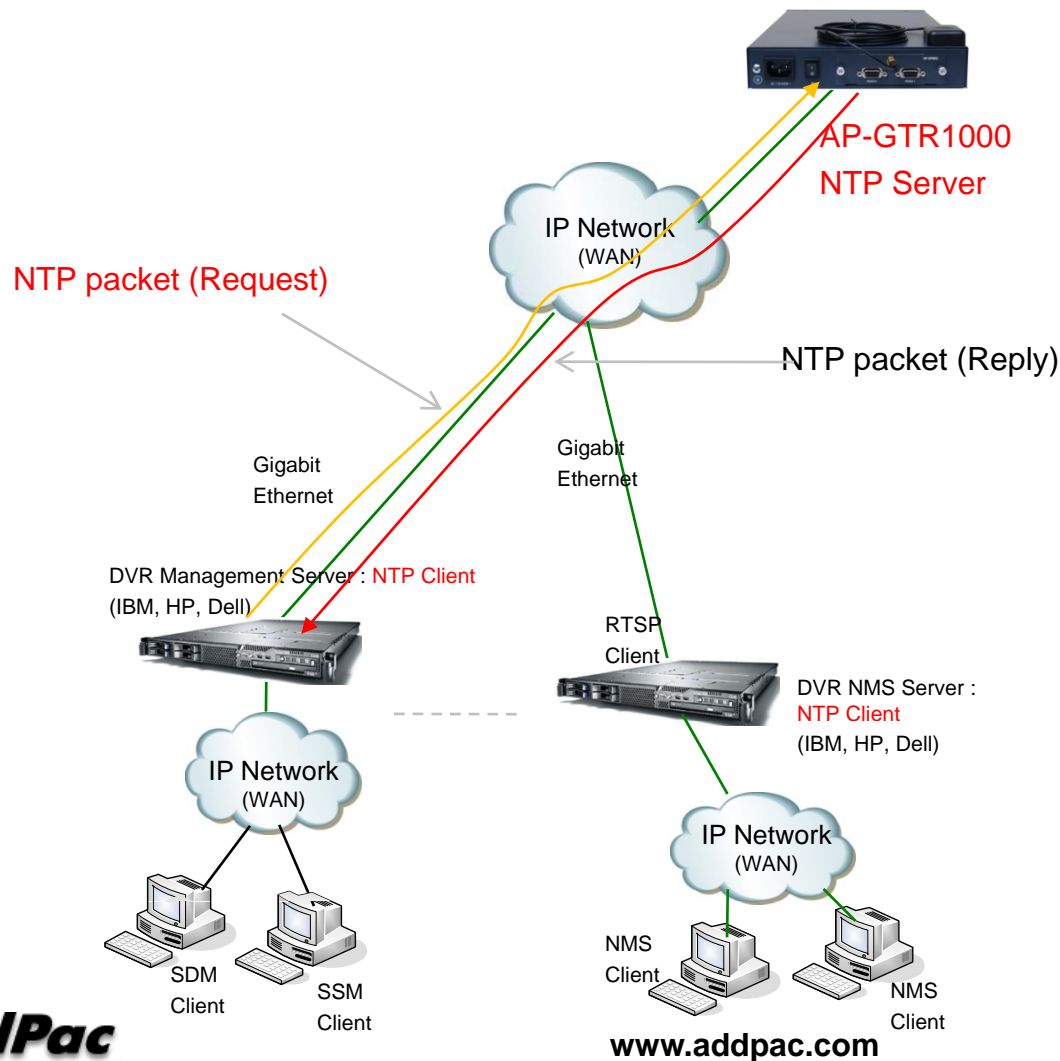
event logging buffers (messages logged)

```
-----  
Sep 29 06:30:18 ethernet Interface FastEthernet0/0, changed state to UP
```

Retrieve the system log – command and event log

SNTP (Simple Network Time Protocol)

AP-GTR1000 GPS based Embedded NTP Server





Thank you!

AddPac Technology Co., Ltd.
Sales and Marketing

Phone +82.2.568.3848 (KOREA)

FAX +82.2.568.3847 (KOREA)

E-mail sales@addpac.com