

# AP-GTR1000

## IP GPS Time Receiver Terminal

High Performance IP GPS Time Receiver Terminal Solution



**AddPac**

**AddPac Technology**

Sales and Marketing

[www.addpac.com](http://www.addpac.com)

# Contents

- Product Overview
- Product Highlight
- Hardware Specification
- APOS™ Service Features
- Network Diagram
- Ordering Information



# Product Overview

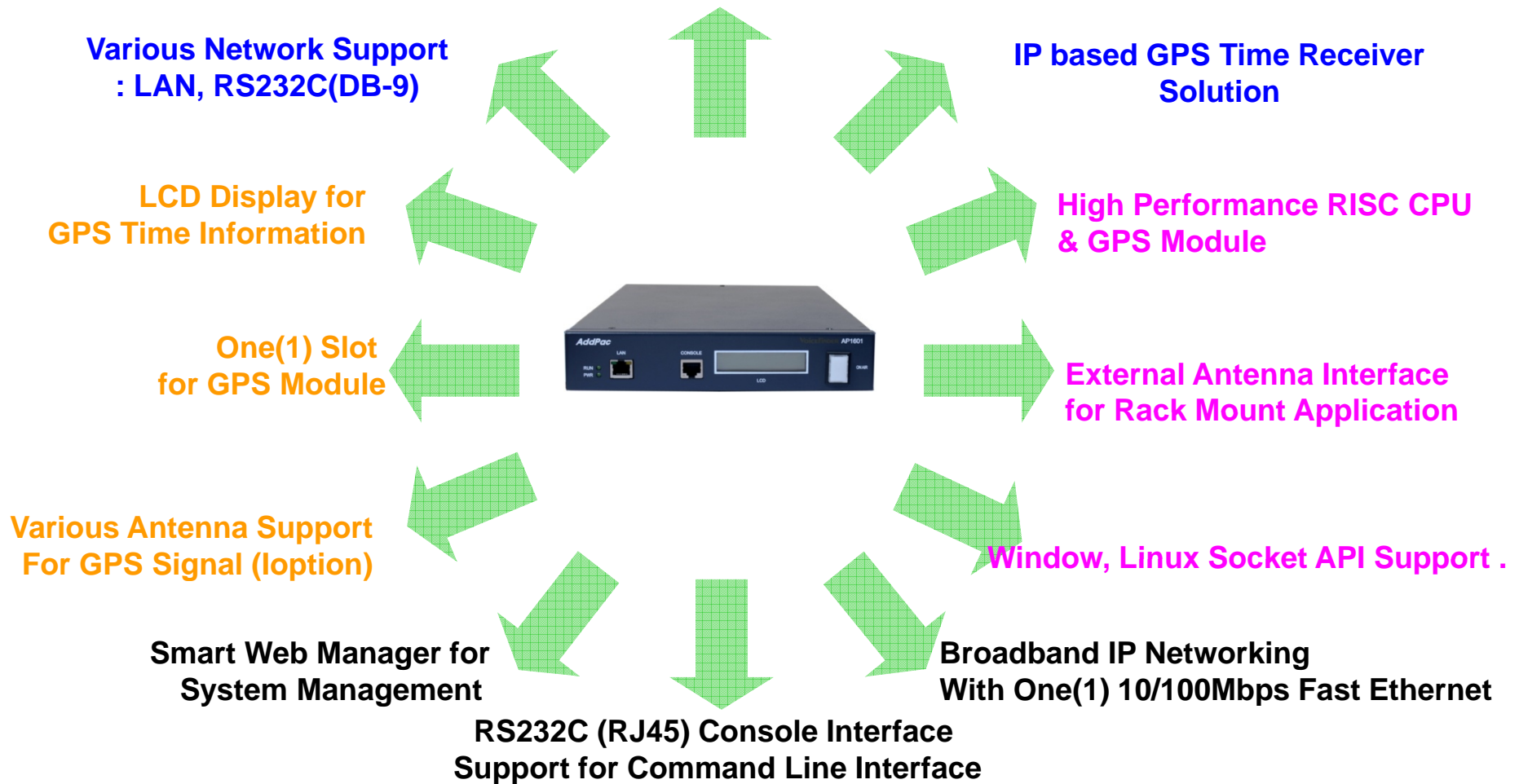
## AP-GTR1000 IP based GPS Time Receiver Terminal

- High Performance GPS Time Receiver Terminal Solution
- IP based GPS Time Receiver (Location Free, etc)
- Dual RS232 Port for GPS Time Information Transmission
- LCD Display for GPS Time Information
- External Antenna Interface Support
- Various Antenna Support for GPS Signal
- Blue LAMP for Device Status
- Smart Web Manager for System Configuration & Management
- Window, Linux Simple Socket API Program Support
- Firmware Upgradeable Architecture
- Broadcasting Solution with Outstanding Network Service Capability

# Product Highlights

AP-GTR1000 IP based GPS Time Receiver Terminal

## High Performance GPS Time Receiver Terminal



# Hardware Specification

AP-GTR1000 IP based GPS Time Receiver Terminal

RISC  
CPU

High-end  
GPS

- RISC Microprocessor Computing Power
- High-end GPS Module Hardware Architecture
- One(1) Module Slot for GPS Module
- LCD Display at Front Side
- Blue LAMP
- One(1) 10/100Mbps Fast Ethernet Interface
- Dual(2) DB-9 RS232C Interface
- Internal Power Supply
- Rack Mount Bracket (Option)
- GPS Antenna (Option)
- Option Module : AP-GPS-RS232
  - Two(2) DB-9 RS232C Interface Port
  - GPS Antenna Interface Port

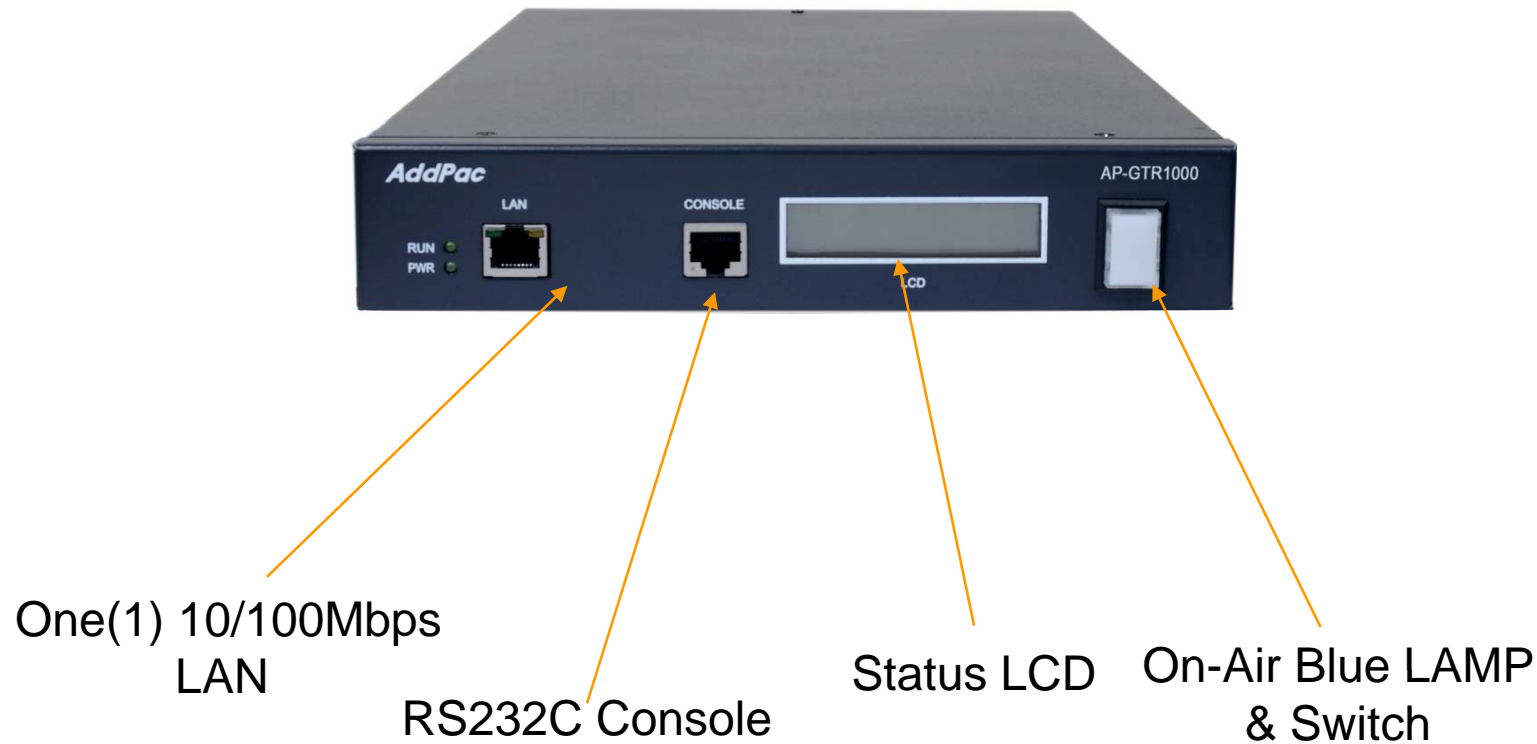
# Hardware Specification

AP-GTR1000 IP based GPS Time Receiver Terminal

RISC  
CPU

High-end  
GPS

## Front Side



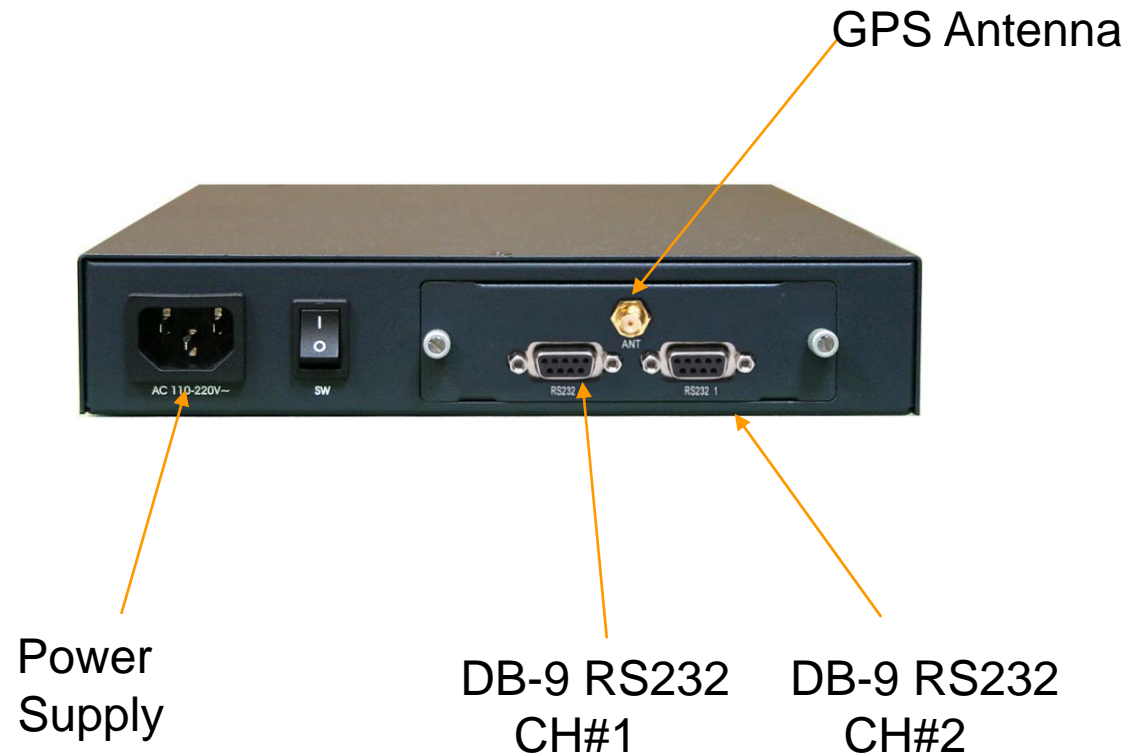
# Hardware Specification

AP-GTR1000 IP based GPS Time Receiver Terminal

RISC  
CPU

High-end  
GPS

## Back Side



# Hardware Specification

AP-GTR1000 IP based GPS Time Receiver Terminal

RISC  
CPU

High-end  
GPS

## GPS Antenna



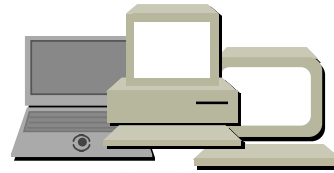


# APOS™ Service Features

AP-GTR1000 IP based GPS Time Receiver Terminal

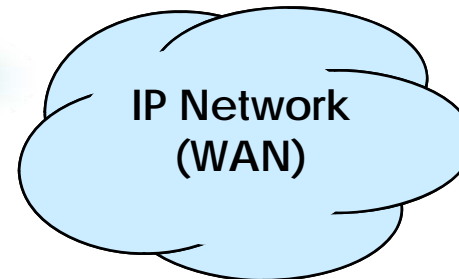
- **APOS Internetworking Software**

- AddPac Operating System (APOS)
- Support Industry Standard
- Integrated Networking Protocols
- Optimized Performance & Functionality
- Easy to use, Installation, and Maintenance



Window Application (DVR, etc)

IP Routing



IP Network (WAN)

Remote Access Broadcasting

FTP/TFTP

PPPoE

VLAN Routing

Web based Management



SNMP

Telnet

# APOS™ Service Features

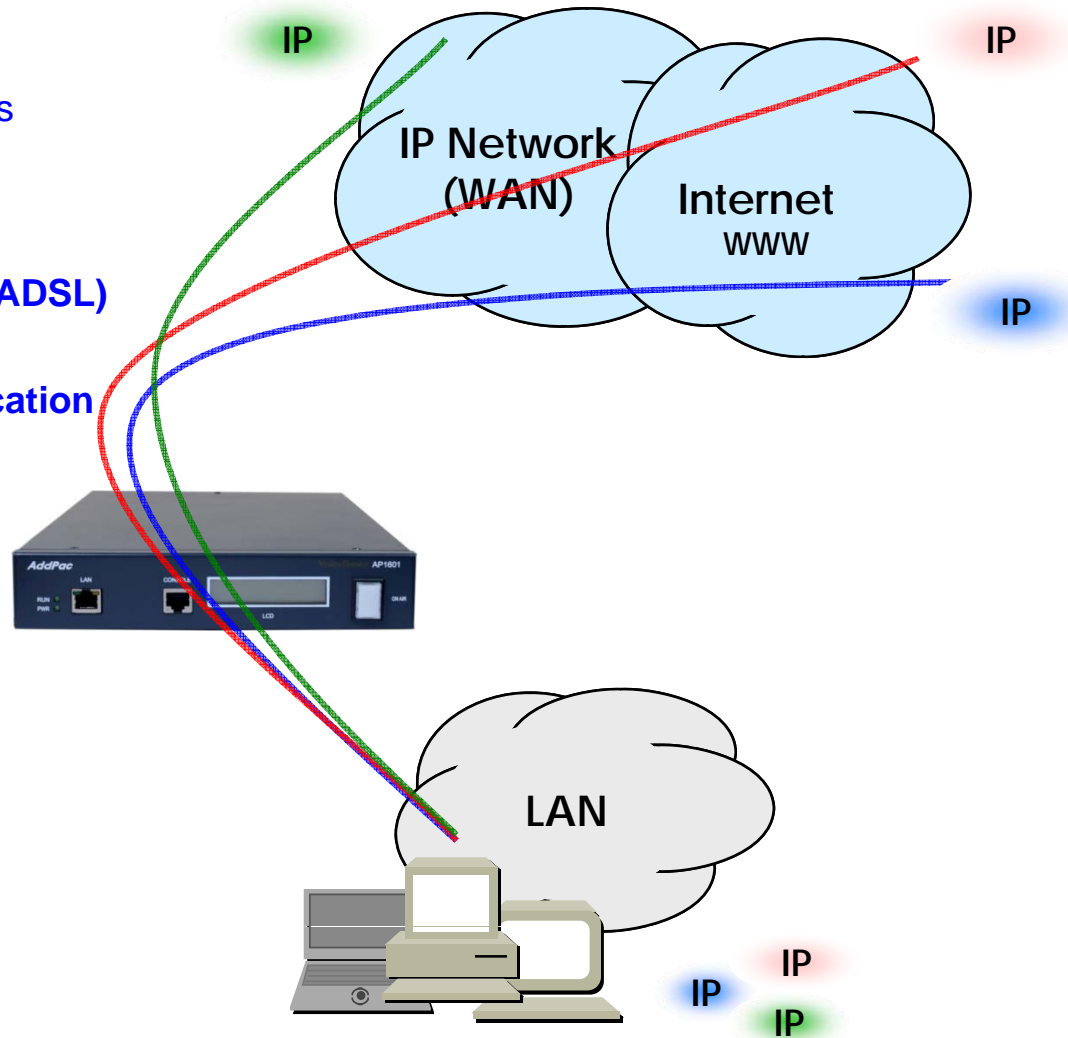
AP-GTR1000 IP based GPS Time Receiver Terminal

- **IP Routing Protocols**

- Multi-protocol Internetworking Services
- Static & Default IP routing

- **WAN Protocols**

- Point-to-Point Protocol (PPPoE for ADSL)
- IEEE 802.3 Ethernet
- PPTP support for secure communication



# APOS™ Service Features

AP-GTR1000 IP based GPS Time Receiver Terminal

- **Network Managements**
  - Standard SNMP Agent (MIB v2) Support
  - Remote Management using Console, Telnet
  - Web based Management using HTTP Server Interface
- **Security Functions**
  - Standard & Extended IP Access List
  - Enable/Disable for Specific Network Protocols
  - Multi-level User Account Management
  - Auto-disconnect for Telnet/Console Sessions
  - PPP User Authentication Supports (PAP & CHAP)
- **Operation & Managements**
  - System Performance Analysis for Process, CPU, Connection Interface
  - Debugging, System Auditing, and Diagnostics Support
  - System Booting and Auto-rebooting with Watchdog Feature
  - System Managements with Data Logging
  - IP Traffic Statistics with Accounting

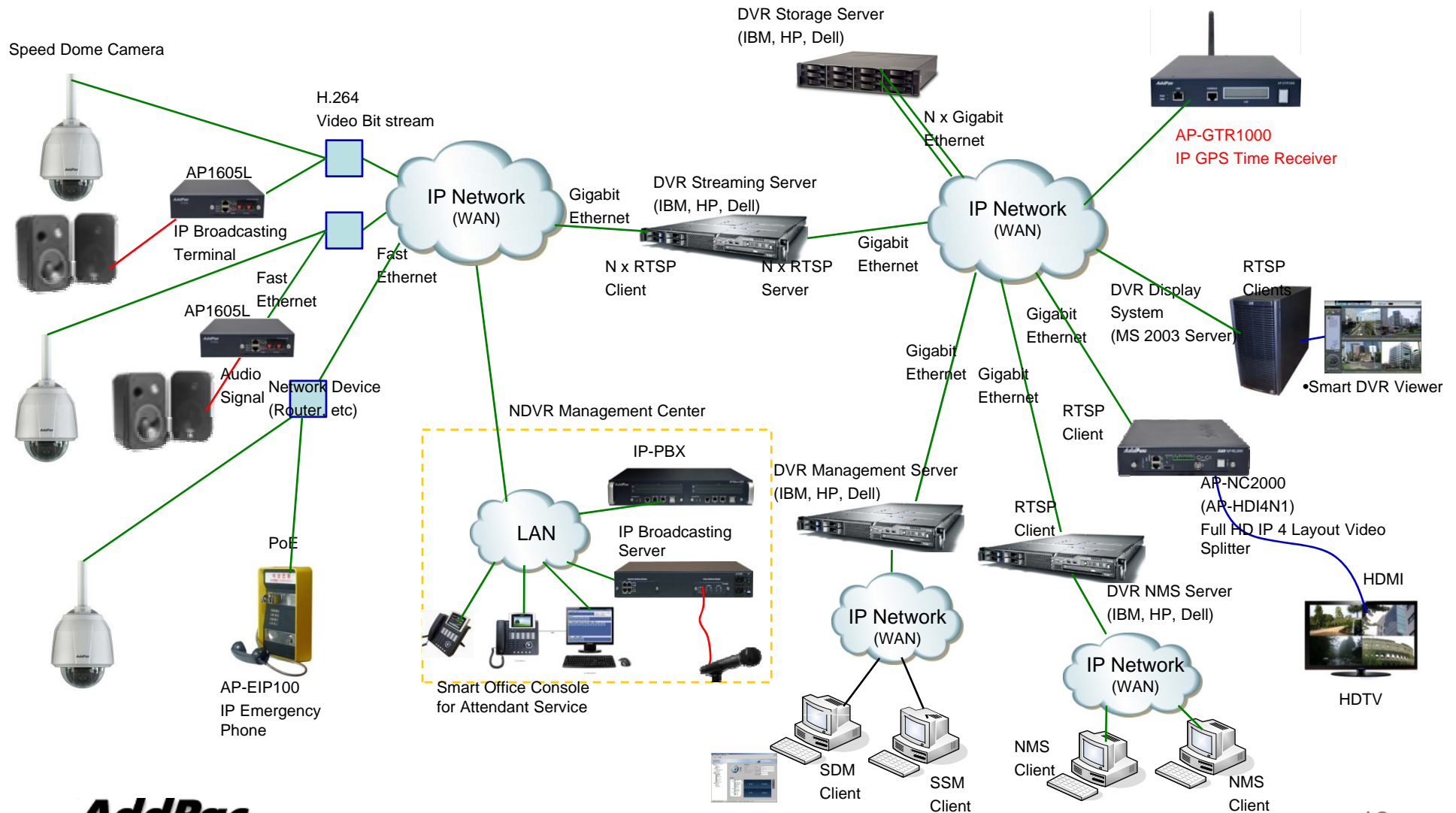
# APOS™ Service Features

AP-GTR1000 IP based GPS Time Receiver Terminal

- **Network Protocols**
  - DHCP Server & Relay Functions
  - Network Address Translation (NAT) Function
  - Port Address Translation (PAT) Function
  - Transparent Bridging (IEEE Standard) Function
    - Spanning Tree Bridging Protocol Support
    - Remote Bridging Support
    - Concurrent Routing and Bridging Support
  - Cisco Style Command Line Interface (CLI)
  - Network time Protocol (NTP) Support

# Network Diagram

## AP-GTR1000 IP based GPS Time Receiver Terminal



# Ordering Information

## AP-GTR1000 IP based GPS Time Receiver Terminal

- **AP-GTR1000 GPS Time Receiver Terminal Hardware**
  - AP-GTR1000 Main Body
  - RISC Microprocessor with GPS Module
  - Option : AP-GPS-RS232 Module
  - Including Network Cable Set & Power Supply, etc.
- **Built-in APOS Internetworking Software for AP-GTR1000**
- **Including 1 Year Hardware Warranty**
- **Product Documents**
  - Install and Operation Guide (PDF)
- **Pricing**
  - AddPac Technology Regional Sales Manager
  - Authorized Sales and Marketing Representatives
  - Please Contact [www.addpac.com](http://www.addpac.com)



# Thank you!

**AddPac Technology Co., Ltd.**  
Sales and Marketing

Phone +82.2.568.3848 (KOREA)

FAX +82.2.568.3847 (KOREA)

E-mail [sales@addpac.com](mailto:sales@addpac.com)